

**STATE OF NEW MEXICO
ENERGY, MINERALS AND NATURAL RESOURCES DEPARTMENT
OIL CONSERVATION DIVISION**

**APPLICATIONS OF MEWBOURNE OIL
COMPANY FOR COMPULSSORY POOLING,
LEA COUNTY, NEW MEXICO**


Case Nos. 21962 & 21963

NOTICE OF FILING

Mewbourne Oil Company hereby submits Replacement Exhibit 3-C in the above cases, which is necessary due to the original filing being unreadable. The undersigned thought he had filed it with the Division, but did not do so.

Orders have been entered in these cases.

Respectfully submitted,



James Bruce
Post Office Box 1056
Santa Fe, New Mexico 87504
(505) 982-2043
jamesbruc@aol.com

Attorney for Mewbourne Oil Company

Zach 17/8 B2MD, NC Fed Com 1H, 3H

A'

300252674500
ENDEAVOR ENERGY RESOURCES LP
1880 FSL/2180 FWL
TWP: 26 S - Range: 33 E - Sec: 17

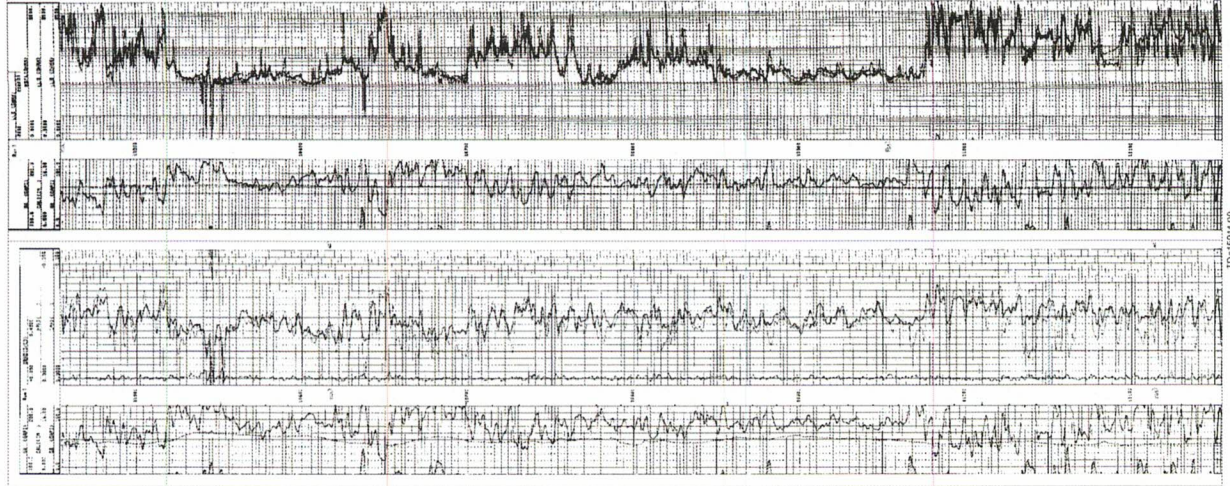
300253682000
BITA OIL PRODUCERS LLC
1880 FSL/2180 FWL
TWP: 26 S - Range: 33 E - Sec: 7

300252614400
CIMAREX ENERGY CO. OF COLORADO
1880 FSL/2180 FWL
TWP: 26 S - Range: 33 E - Sec: 5

17G 26S 33E

7F 26S 33E

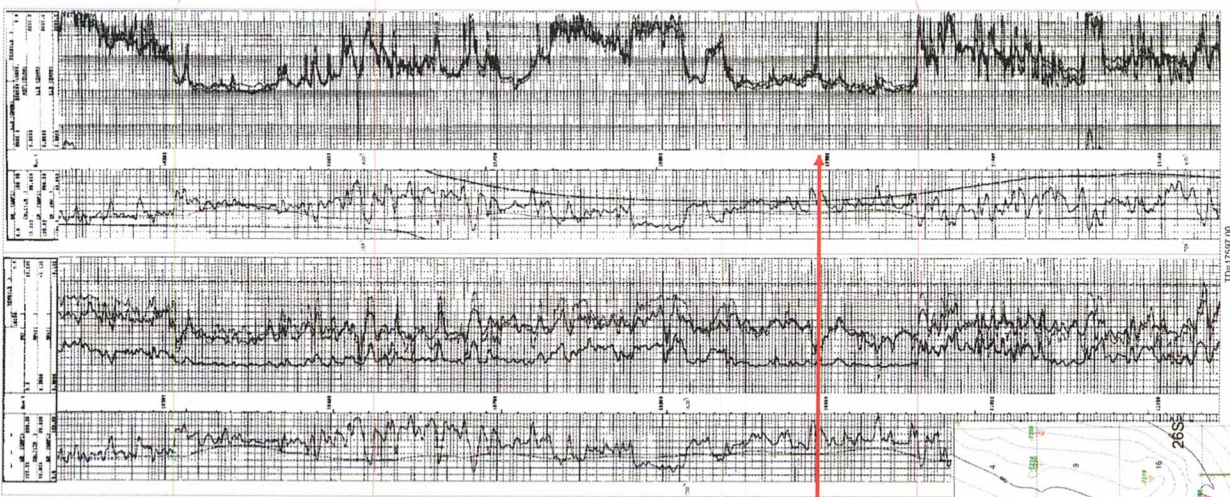
5K 26S 33E



2nd BS Sd Top

2nd BS Sd Lower

3rd BS Carb Top



2nd BS Sd Top

2nd BS Sd Lower

3rd BS Carb Top



Zach 17/8 B2MD Fed Com 1H
Zach 17/8 B2NC Fed Com 3H

TD=15914.00

TD=13900.00

TD=17597.00