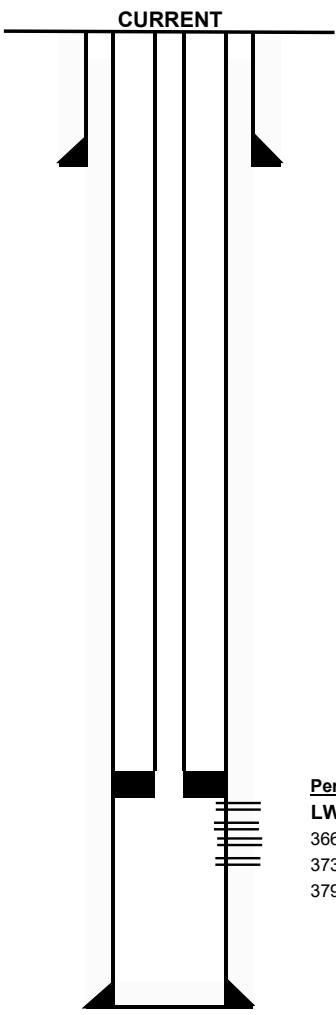


Well Name: State A A/C 1 #120 Plantation ID Number: _____
 Location: 25 FNL, 1345 FWL; Unit C Sec: 10 Township: 23S
 County: Lea State: NM API: 30-025-28515

Lease Type: STATE
 Range: 36E
 Formation: Langlie Mattix, 7 Rvrs, Queen, Grayburg

Surface Csg
 Size: 8-5/8"
 Wt.&Thrd: 24#, STC
 Grade: _____
 Set @: 442'
 Sxs cmt: 275
 Circ: _____
 TOC: Surface
 Hole Size: 12-1/4"

KB: _____ 3495'
 DF: _____
 GL: _____ 3483'
 Spud Date: _____ 3/26/1984
 Compl. Date: _____ 4/3/1984



History - Highlights

9/18/1983: Spud well

4/1984:
LWR 7 Rivers & Queen Perf
 3792-3798 w/ 11 holes, 1 JSPF. Acdz w/ 750 gals 15% NEFE HCL
 3738-3738-3791 w/ 43 holes, 1 JSPF. Acdz w/ 5000 gals 15% NEFE HCL
 3666-3724 w/ 38 holes, 1 JSPF. Acdz w/ 4000 gals 15% NEFE HCL

12/17/1992: TA status. Set CIBP @ 3500'

5/6/2019: Casing testing failed. Suspected CIBP failed

Proposed Injection Interval: ~3,650' to ~3,800'

Tubing	2 3/8" IPC
Lining	IPC
Packer Type	Arrow 1X
Packer Depth	~3625

Production Csg
 Size: 5-1/2"
 Wt.&Thrd: 14#, LTC
 Grade: _____
 Set @: 3850'
 Sxs Cmt: 1300
 Circ: _____
 TOC: Surface
 Hole Size: 7-7/8"

Perfs
LWR 7 Rivers & Queen Perf
 3666-3724
 3738-3791
 3792-3798

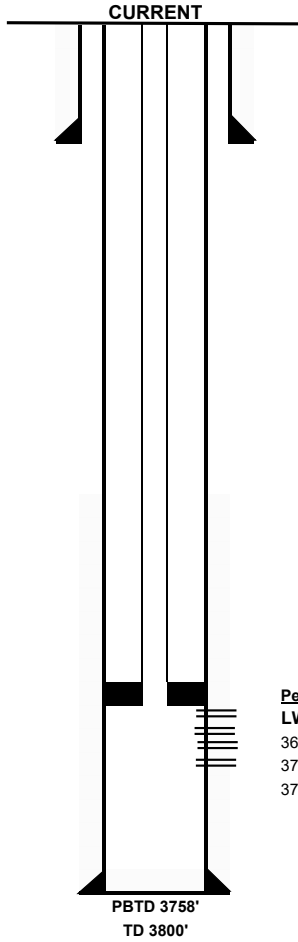
PBTD 3840'
 TD 3850'

Tubulars - Capacities and Performance							
	bbl/ft	cf/ft	Tensile (lbs)	Burst (psi)	Collapse (psi)	ID(in)	Drift (in)
2-3/8" cement lined							

Well Name: State A A/C-3 #10 Plantation ID Number: _____ Lease Type: STATE
 Location: 1345' FNL and 1480' FEL Sec: 10 Township: 23S Range: 36E
 County: Lea State: NM API: 30-025-28509 Formation: Langlie Mattix, 7 Rvrs, Queen, Grayburg

Surface Csg
 Size: 8-5/8"
 Wt.&Thrd: 24#, STC
 Grade: _____
 Set @: 457
 Sxs cmt: 275
 Circ: 60
 TOC: Surface
 Hole Size: 12-1/4"

KB: 3474
 DF: _____
 GL: 3650
 Spud Date: 4/10/1984
 Compl. Date: 2/6/1984



Proposed Injection zone
3575 to 3705

Tubing	2 3/8" IPC
Lining	IPC
Packer Type	Arrow 1X
Packer Dept	~3550

History - Highlights

2/6/1984: Spud well

LWR 7 Rivers & Queen Perf
 2/6/1984 3655- 3700 (1spf 46 holes)
 3700-3710 (1spf 10 holes)

4/1/1984 Produced well 15 bopd , 10 mcf and 166 bwpd
 8/1/1984 CTI
 10/1/1992 Pressure test casing to 500 psi
 11/1/1992 Acid Job
 5/1/20219 Failed MIT

Rec: Queen waterflood injection well

Production Csg
 Size: 5-1/2"
 Wt.&Thrd: 14#, LTC
 Grade: _____
 Set @: 3800
 Sxs Cmt: 850
 Circ: _____
 TOC: 2750'
 Hole Size: 7-7/8"

Perfs
LWR 7 Rivers & Queen Perf
 3666-3724
 3738-3791
 3792-3798

PBTD 3758'
 TD 3800'

Tubulars - Capacities and Performance						
	bb/ft	cf/ft	Tensile (lbs)	Burst (psi)	Collapse (psi)	
2-3/8" cement lined						ID(in) Drift (in)

WELLBORE DIAGRAM
STATE A AC 1 116

Date: 11/5/2021

OGRID# 329326

Well Name:

API# 30-025-28396

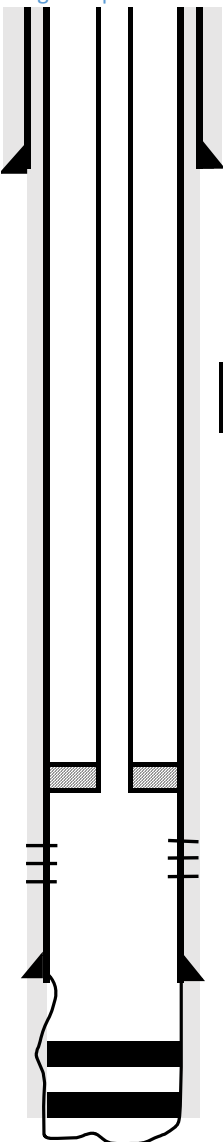
County Lea State NM Field _____

Surf Location: 10D-23S-36E GL Elev: 3480' RKB: 20'

Wellhead _____ TVD: _____ PBTD: 5805 TD: 8400

Original Spud Date: 12/9/1983 Completed Pool: Langlie Mattix-7RVRS-QUEEN-GRAYBURG

Set Depth	Csg Details	Hole Size	Tubing Details:	Run Date:
Surface				<u>1/10/1997</u>
1350'	13 3/8" 54.5# 1200 SXS	17.50 inch		



PROPOSED

PERFORATIONS:

LANGLIE/Mattix:
 3666-3726- JSPF, 38 holes perfed, tested and squeezed
 3740-3786-JSPF, 36 holes,
 3740-3765- JSPF, 15 holes (reperf)
 3802-3831-JSPF, 24 holes 3834-
 3842-JSPF, 9 holes

Prod		
4000'	8 5/8" 32# & 24# 1425 SXS	12.25 inch

Open Hole CMT PLUGS: Wolfcamp - 35 sxs from 8283 1 -8383 1 Abo - 50 sxs from 7756'-79016 Drinkard - 35 sxs 75941 -76941 Tubb - 35 sxs 72971 -73971 Blinebry - 35 sxs 66501 -67501 Glorieta - 35 sxs from 5791 1 - 5891', 35 sxs from 39501 -40501 Across 8-5/811 Csg.

Surface Casing

Hole Size:	17 1/2"
Casing Size:	13 3/8"
Depth Set:	1350'
Top of Cement:	surface
Cement with:	1200 sx
Method Determined:	circulated

Production Casing

Hole Size:	12 1/4"
Casing Size:	8 5/8"
Depth Set:	4000'
Top of Cement:	surface
Cement with:	1425 sx
Method Determined:	circulated

Proposed Injection Interval

Seven Rivers/Queen Inj Zone
<u>3644'</u> to <u>3845'</u>
Zone will be perforated

Tubing

Tubing Size:	3 1/2"
Lining Material:	IPC
Type of Packer:	AS1X
Packer Depth Set:	3630'



WELLBORE DIAGRAM

State A A/C 1 #117

Date: 11/5/2021

Well Name:

OGRID#

County Lea State NM Field _____

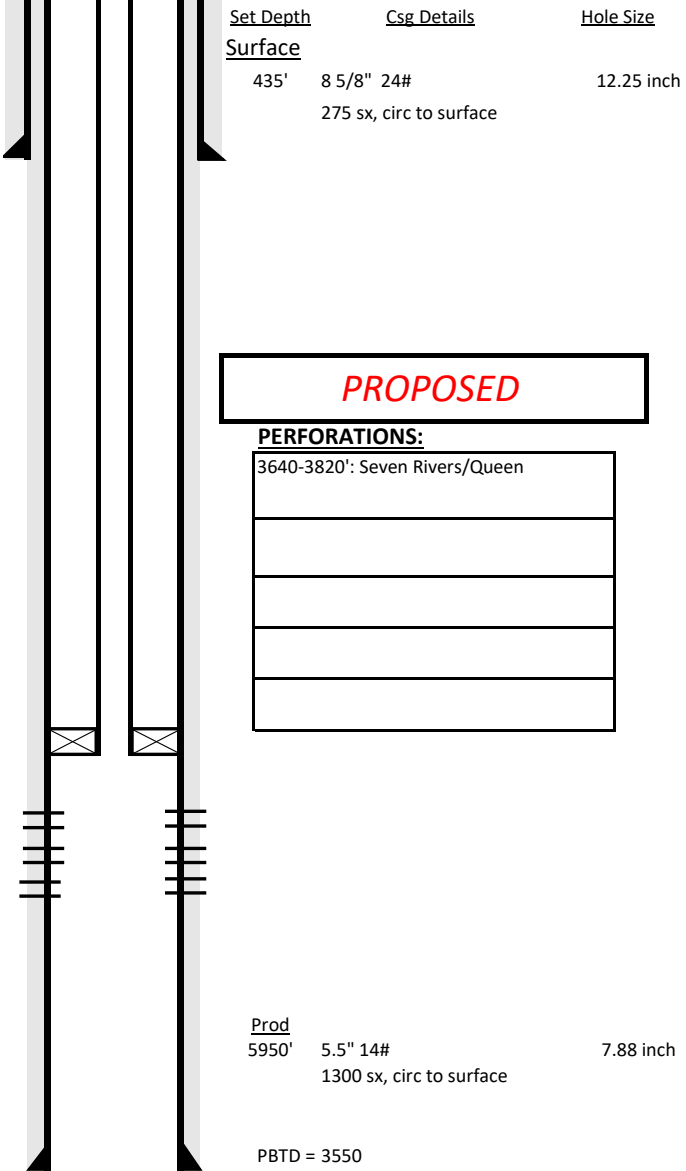
API# 30-025-28512

Surf Location SEC B03 T23S R36E, 1930 FNL, 660 FWL GL Elev: 3468'

RKB: _____

Wellhead _____ TVD: _____ PBTD: 3550 TD: 3830

Original Spud Date: 3/17/1984 Completed Pool: _____



Surface Casing

Hole Size:	12 1/4"
Casing Size:	8 5/8"
Depth Set:	435'
Top of Cement:	surface
Cement with:	275 sx
Method Determined:	circulated

Production Casing

Hole Size:	7 7/8"
Casing Size:	5 1/2"
Depth Set:	3830'
Top of Cement:	surface
Cement with:	1300 sx
Method Determined:	circulated

Proposed Injection Interval

<u>Seven Rivers/Queen Inj. Zone</u>	
<u>3,640'</u>	to <u>3820'</u>
Zone will be perforated	

Tubing

Tubing Size:	2 3/8"
Lining Material:	IPC
Type of Packer:	AS1X
Packer Depth Set:	3610'

