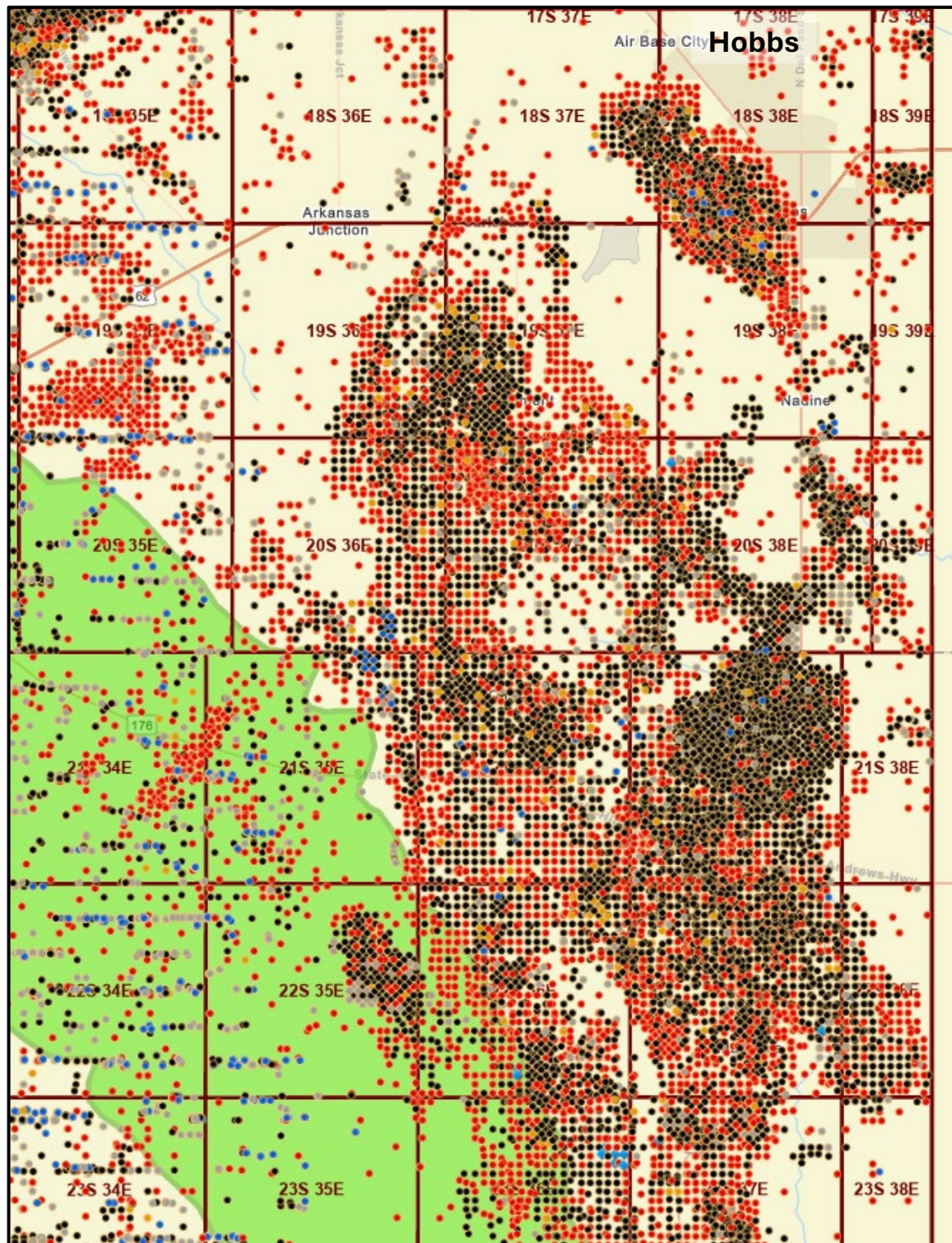




Case Nos. 24278, 24277, 24123, 23775, 23614-23617, and 24018-24027
OCD Exhibit No. 1

Exhibit 1A: Map showing all well locations in the area southwest of Hobbs and the location of the Capitan Reef Aquifer.



Index Map



EXPLANATION

- Outline of Capitan Reef Aquifer (Hiss; 1975)
 - Location of proposed well with approved APDs
 - Location of producing well
 - Location of plugged and abandoned well
 - Location of UIC Class II permit and AOR for Non-DMG shallow applications since 2020.
- Devonian Applications**
- Administrative App
 - Approved
 - Hearing
 - Protested
 - Lapsed
 - Dismissed / Withdrawn
 - Undefined

[Others well symbols defined at OCD GIS website]
Source: NMOCD ArcGIS Database

Exhibit 1B: Modified Exhibit 1A showing only UIC Class II well locations and applications for UIC Class II permits (disposal and ER).

