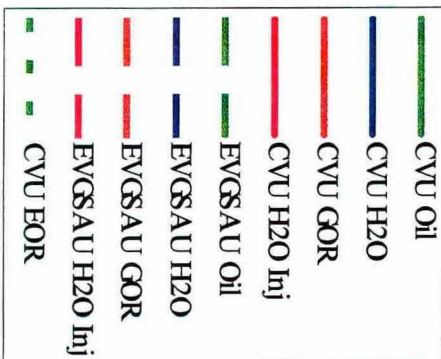
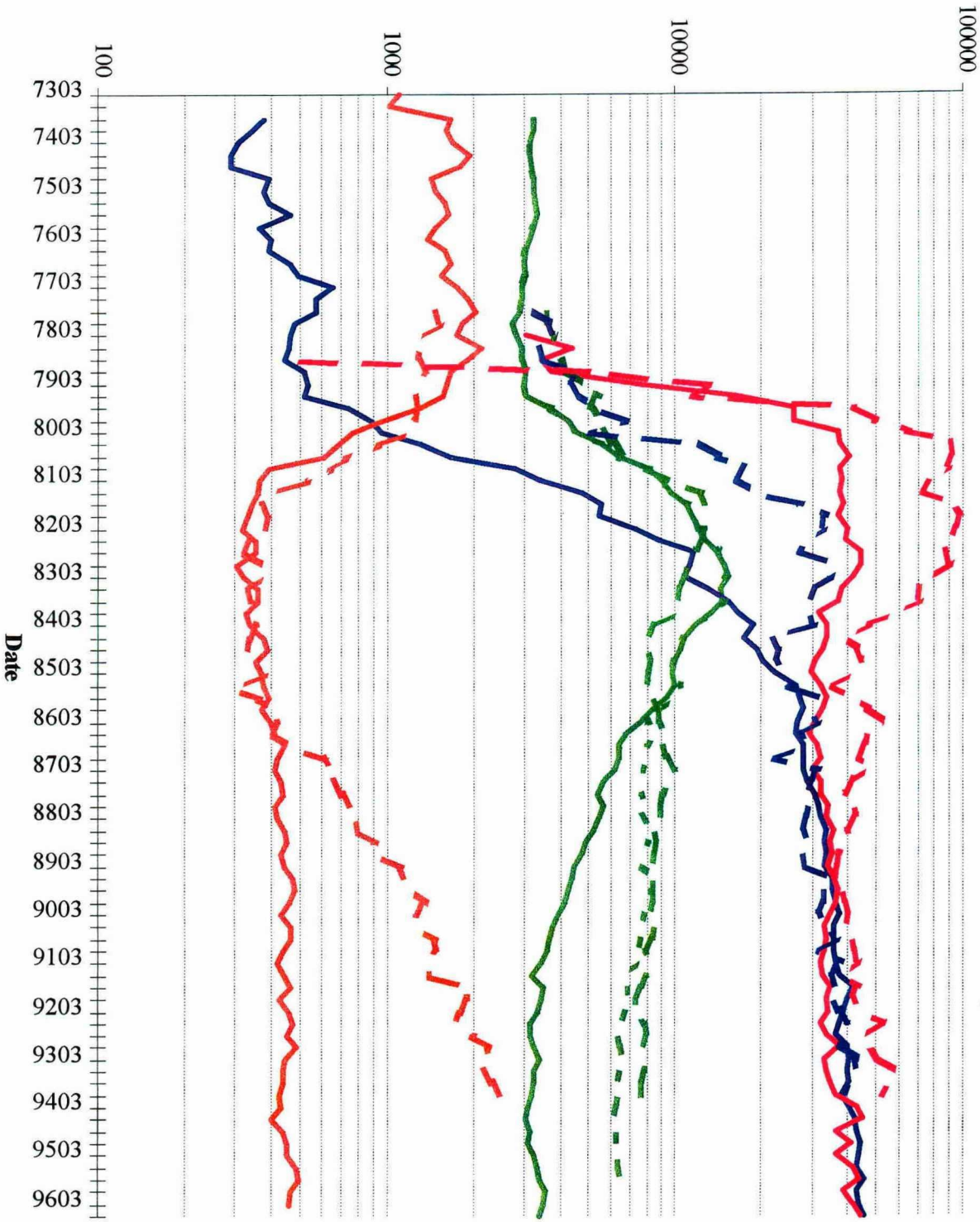


# Reality Check: CVU Target Area vs EVGSAU Target Area

[Normalized to H2O Inj. Start Date]

[CVU EOR Forecast Normalized to EVGSAU CO2 Start]



**BEFORE THE  
OIL CONSERVATION DIVISION**  
Santa Fe, New Mexico

Case No. 11650 Exhibit No. 8

Submitted by: Texaco Exploration and Production Inc.

Hearing Date: December 19, 1996