



PHONE (575) 397-6388 • FAX (575) 397- 0397 • 1324 W. MARLAND • P.O. BOX 805 • HOBBS, NM 88241-0805
E-MAIL: cbrunson@bbcinternational.com

DELINEATION/REMEDATION WORKPLAN

OXY – IRIIDIUM MDP1 28 21 FED COM #006H (Leak Date: 4/28/19)

RP # 2RP-5427

This delineation workplan and remediation proposal addresses the releases associated with RP # 1RP-5427.

The following information includes:

1. Appropriate completed and signed C-141 pages.
2. Scaled digital site map with spill area demarcated and leak point identified along with sample point locations and areas of remediation at appropriate depths.
3. GPS information for sample points and sample methodology.
4. Depth to groundwater information (i.e., pdf of OSE search results, USGS search results, and/or copy of Chevron groundwater trend map).
5. Watercourse/features map within 1000 feet.
6. BLM Cave Karst map.
7. FEMA National Flood map.
8. Laboratory analysis results summary table and original laboratory analysis reports.
9. Potentially other pertinent information as necessary for site specific purposes.

Based on the information included in this package and the NMOCD rules, the following remediation is proposed:

OXY will excavate the spill area as depicted on the following site diagram. The entire leak area will be excavated to a depth of 1 foot.

Bottom and sidewall confirmation samples will be collected every 75 feet.

The entire site will then be backfilled with clean soil and revegetated (if warranted) to the standards of the appropriate regulatory agency or private surface owner.

All excavated materials will be disposed of at an NMOCD-approved disposal facility.

Form C-141

Page 3

State of New Mexico
Oil Conservation Division

Incident ID	
District RP	2RP-5427
Facility ID	
Application ID	

Site Assessment/Characterization*This information must be provided to the appropriate district office no later than 90 days after the release discovery date.*

What is the shallowest depth to groundwater beneath the area affected by the release?	140 (ft bgs)
Did this release impact groundwater or surface water?	<input type="checkbox"/> Yes <input checked="" type="checkbox"/> No
Are the lateral extents of the release within 300 feet of a continuously flowing watercourse or any other significant watercourse?	<input type="checkbox"/> Yes <input checked="" type="checkbox"/> No
Are the lateral extents of the release within 200 feet of any lakebed, sinkhole, or playa lake (measured from the ordinary high-water mark)?	<input type="checkbox"/> Yes <input checked="" type="checkbox"/> No
Are the lateral extents of the release within 300 feet of an occupied permanent residence, school, hospital, institution, or church?	<input type="checkbox"/> Yes <input checked="" type="checkbox"/> No
Are the lateral extents of the release within 500 horizontal feet of a spring or a private domestic fresh water well used by less than five households for domestic or stock watering purposes?	<input type="checkbox"/> Yes <input checked="" type="checkbox"/> No
Are the lateral extents of the release within 1000 feet of any other fresh water well or spring?	<input type="checkbox"/> Yes <input checked="" type="checkbox"/> No
Are the lateral extents of the release within incorporated municipal boundaries or within a defined municipal fresh water well field?	<input type="checkbox"/> Yes <input checked="" type="checkbox"/> No
Are the lateral extents of the release within 300 feet of a wetland?	<input type="checkbox"/> Yes <input checked="" type="checkbox"/> No
Are the lateral extents of the release overlying a subsurface mine?	<input type="checkbox"/> Yes <input checked="" type="checkbox"/> No
Are the lateral extents of the release overlying an unstable area such as karst geology?	<input type="checkbox"/> Yes <input checked="" type="checkbox"/> No
Are the lateral extents of the release within a 100-year floodplain?	<input type="checkbox"/> Yes <input checked="" type="checkbox"/> No
Did the release impact areas not on an exploration, development, production, or storage site?	<input checked="" type="checkbox"/> Yes <input type="checkbox"/> No

Attach a comprehensive report (electronic submittals in .pdf format are preferred) demonstrating the lateral and vertical extents of soil contamination associated with the release have been determined. Refer to 19.15.29.11 NMAC for specifics.

Characterization Report Checklist: *Each of the following items must be included in the report.*

- ☒ Scaled site map showing impacted area, surface features, subsurface features, delineation points, and monitoring wells.
- ☐ Field data
- ☒ Data table of soil contaminant concentration data
- ☒ Depth to water determination
- ☒ Determination of water sources and significant watercourses within 1/2-mile of the lateral extents of the release
- ☐ Boring or excavation logs
- ☐ Photographs including date and GIS information
- ☒ Topographic/Aerial maps
- ☒ Laboratory data including chain of custody

If the site characterization report does not include completed efforts at remediation of the release, the report must include a proposed remediation plan. That plan must include the estimated volume of material to be remediated, the proposed remediation technique, proposed sampling plan and methods, anticipated timelines for beginning and completing the remediation. The closure criteria for a release are contained in Table 1 of 19.15.29.12 NMAC, however, use of the table is modified by site- and release-specific parameters.

Form C-141

Page 4

State of New Mexico
Oil Conservation Division

Incident ID	
District RP	2RP-5427
Facility ID	
Application ID	

I hereby certify that the information given above is true and complete to the best of my knowledge and understand that pursuant to OCD rules and regulations all operators are required to report and/or file certain release notifications and perform corrective actions for releases which may endanger public health or the environment. The acceptance of a C-141 report by the OCD does not relieve the operator of liability should their operations have failed to adequately investigate and remediate contamination that pose a threat to groundwater, surface water, human health or the environment. In addition, OCD acceptance of a C-141 report does not relieve the operator of responsibility for compliance with any other federal, state, or local laws and/or regulations.

Printed Name: Wade DittrichTitle: Environmental CoordinatorSignature: Date: 9/20/19email: wade_dittrich@oxy.comTelephone: (575) 390-2828**OCD Only**

Received by: _____

Date: _____

Form C-141

Page 5

State of New Mexico
Oil Conservation Division

Incident ID	
District RP	2RP-5427
Facility ID	
Application ID	

Remediation Plan**Remediation Plan Checklist:** *Each of the following items must be included in the plan.*

- ☒ Detailed description of proposed remediation technique
- ☒ Scaled sitemap with GPS coordinates showing delineation points
- ☒ Estimated volume of material to be remediated
- ☒ Closure criteria is to Table 1 specifications subject to 19.15.29.12(C)(4) NMAC
- ☒ Proposed schedule for remediation (note if remediation plan timeline is more than 90 days OCD approval is required)

Deferral Requests Only: *Each of the following items must be confirmed as part of any request for deferral of remediation.*

- ☐ Contamination must be in areas immediately under or around production equipment where remediation could cause a major facility deconstruction.
- ☐ Extents of contamination must be fully delineated.
- ☐ Contamination does not cause an imminent risk to human health, the environment, or groundwater.

I hereby certify that the information given above is true and complete to the best of my knowledge and understand that pursuant to OCD rules and regulations all operators are required to report and/or file certain release notifications and perform corrective actions for releases which may endanger public health or the environment. The acceptance of a C-141 report by the OCD does not relieve the operator of liability should their operations have failed to adequately investigate and remediate contamination that pose a threat to groundwater, surface water, human health or the environment. In addition, OCD acceptance of a C-141 report does not relieve the operator of responsibility for compliance with any other federal, state, or local laws and/or regulations.

Printed Name: Wade DittrichTitle: Environmental CoordinatorSignature: Date: 9-20-19email: wade_dittrich@oxy.comTelephone: (575) 390-2828**OCD Only**

Received by: _____ Date: _____

☐ Approved ☐ Approved with Attached Conditions of Approval ☐ Denied ☐ Deferral Approved




Signature: _____

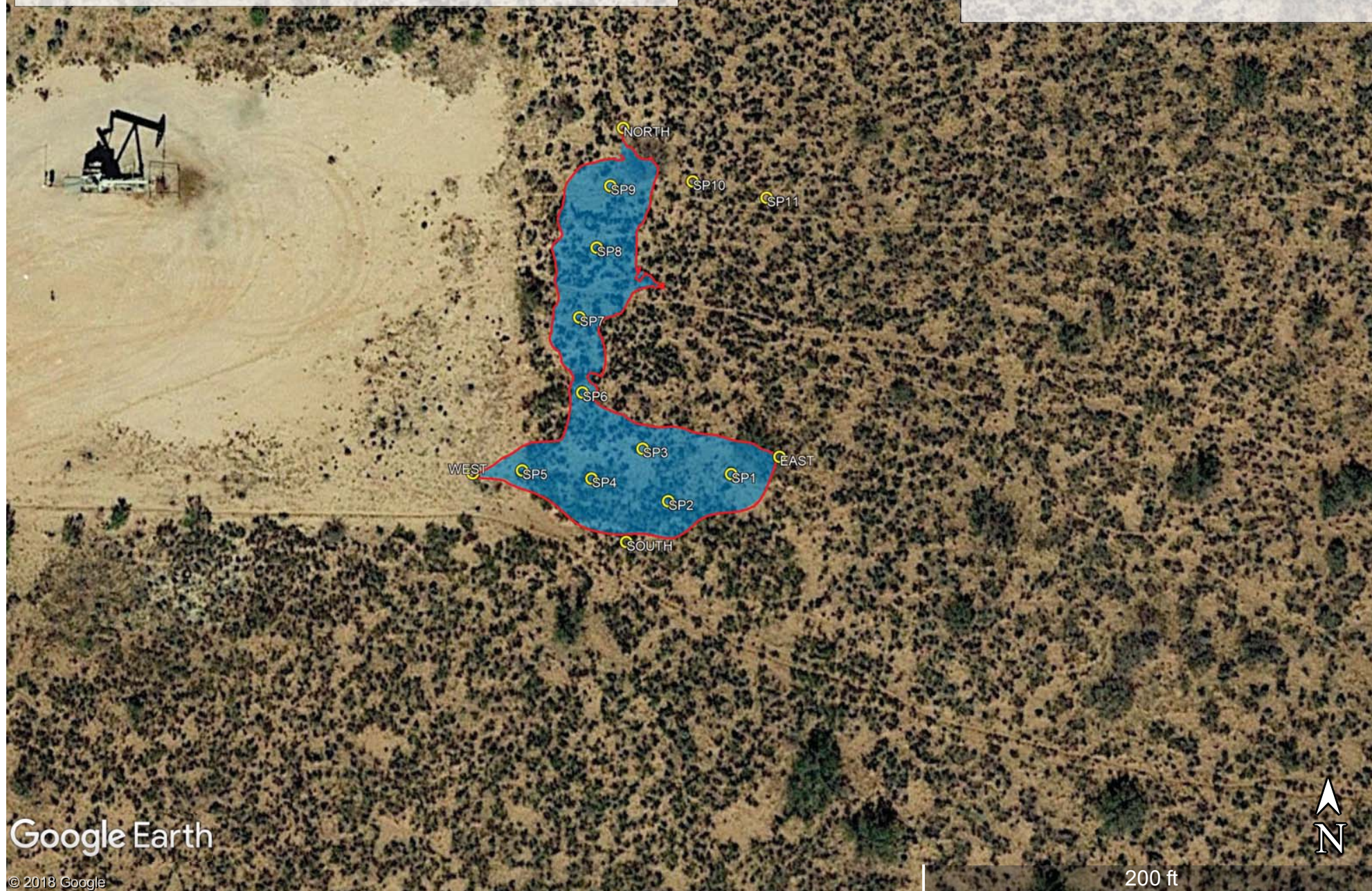
Date: _____

Oxy, Iridium MDP1 28 21 Fed Com #006H

Leak date: 4/26/19
Eddy County, NM
2RP-5427

Legend

-  1 ft excavation across entire leak area
-  Sample points
-  Leak area



Google Earth

© 2018 Google

200 ft

Oxy, Iridium MDP1 28 21 Fed Com #006H

Sample points

SP1, N 32.26692 W-103.77661

SP2, N 32.26689 W-103.77670

SP3, N 32.26695 W-103.77674

SP4, N 32.26692 W-103.77681

SP5, N 32.26693 W-103.77691

SP6, N 32.26702 W-103.77682

SP7, N 32.26711 W-103.77683

SP8, N 32.26720 W-103.77680

SP9, N 32.26727 W-103.77678

SP10, N 32.26728 W-103.77666

SP11, N 32.26726 W-103.77656

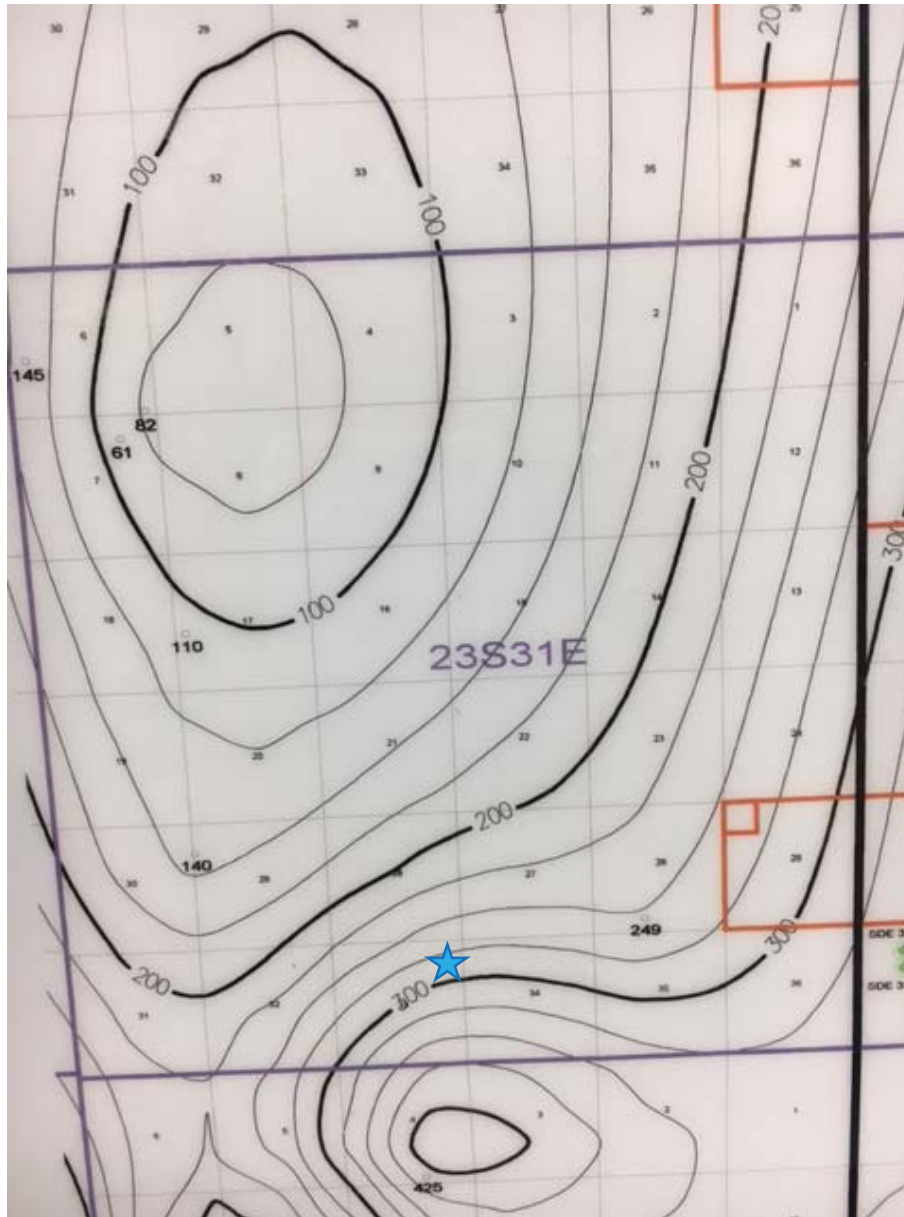
NORTH, N 32.26734 W-103.77676

SOUTH, N 32.26684 W-103.77676

EAST, N 32.26694 W-103.77654

WEST, N 32.26692 W-103.77698

Oxy, Iridium MDP1 28 21 Fed Com #6H
U/L A, Section 33, T23S, R31E
Groundwater: 275'





USGS Home
Contact USGS
Search USGS

National Water Information System: Web Interface

USGS Water Resources

Data Category:
Groundwater

Geographic Area:
New Mexico

GO

Click to hideNews Bulletins

- Introducing The Next Generation of USGS Water Data for the Nation
- Full News

Groundwater levels for New Mexico

Click to hide state-specific text

Search Results -- 1 sites found

Agency code = usgs
site_no list =

- 321648103482101

Minimum number of levels = 1
[Save file of selected sites](#) to local disk for future upload

USGS 321648103482101 23S.31E.29.11333

Eddy County, New Mexico
Latitude 32°16'48", Longitude 103°48'21" NAD27
Land-surface elevation 3,336 feet above NAVD88
The depth of the well is 220 feet below land surface.
This well is completed in the Dewey Lake Redbeds (312DYLK) local aquifer.

Output formats

Table of data
Tab-separated data
Graph of data
Reselect period

Date	Time	? Water-level date-time accuracy	Water level, feet below land surface	Water level, feet above specific vertical datum	Referenced vertical datum	? Water-level accuracy	? Status	? Method of measurement	? Measuring agency	? Source of measurem
1959-03-26		D	138.43			2			U	
1972-09-20		D	139.90			2	R		U	

Explanation

Section	Code	Description
Water-level date-time accuracy	D	Date is accurate to the Day
Water-level accuracy	2	Water level accuracy to nearest hundredth of a foot
Status		The reported water-level measurement represents a static level
Status	R	Site had been pumped recently.
Method of measurement	U	Unknown method.
Measuring agency		Not determined
Source of measurement	U	Source is unknown.
Water-level approval status	A	Approved for publication -- Processing and review completed.

[Questions about sites/data?](#)
[Feedback on this web site](#)

[Automated retrievals](#)
[Help](#)
[Data Tips](#)
[Explanation of terms](#)
[Subscribe for system changes](#)
[News](#)

[Accessibility](#) [Plug-Ins](#) [FOIA](#) [Privacy](#) [Policies and Notices](#)

[U.S. Department of the Interior](#) | [U.S. Geological Survey](#)

Title: Groundwater for New Mexico: Water Levels

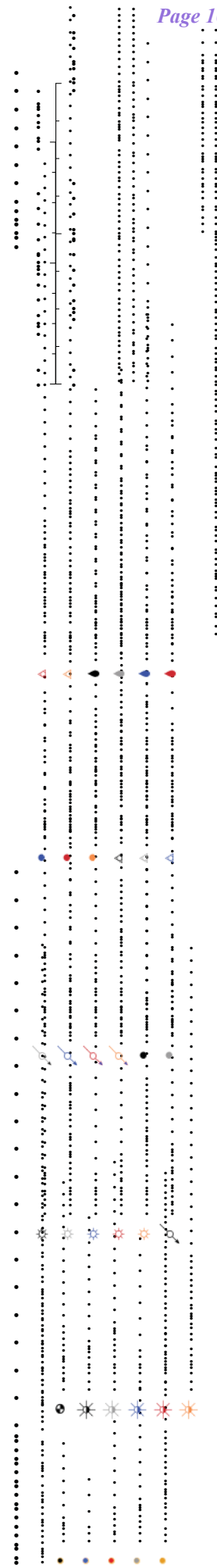
URL: <https://nwis.waterdata.usgs.gov/nm/nwis/gwlevels?>



Page Contact Information: [New Mexico Water Data Maintainer](#)

Page Last Modified: 2019-05-01 13:49:28 EDT

0.45 0.41 nadww01



BLM CAVE KARST MAP

Oxy, Iridium MDP1 28 21 Fed Com #6H

Leak date: 4/26/19
Eddy County, NM
API# 30-015-45247

Legend

- Leak area
- Low potential



900 ft

Google Earth

© 2018 Google

National Flood Hazard Layer FIRMette



Legend

SEE THIS REPORT FOR DETAILED LEGEND AND INDEX MAP FOR FIRM PANEL LAYOUT

SPECIAL FLOOD HAZARD AREAS

- Without Base Flood Elevation (BFE)
Zone A, V, A99
- With BFE or Depth Zone AE, AO, AH, VE, AR
- Regulatory Floodway

OTHER AREAS OF FLOOD HAZARD

- 0.2% Annual Chance Flood Hazard, Area of 1% annual chance flood with average depth less than one foot or with drainage areas of less than one square mile (Zone X)
- Future Conditions 1% Annual Chance Flood Hazard (Zone X)
- Area with Reduced Flood Risk due to Levee. See Notes. (Zone X)
- Area with Flood Risk due to Levee (Zone D)

OTHER AREAS

- Area of Minimal Flood Hazard (Zone X)
- Effective LOMRs
- Area of Undetermined Flood Hazard (Zone D)

GENERAL STRUCTURES

- Channel, Culvert, or Storm Sewer
- Levee, Dike, or Floodwall

OTHER FEATURES

- Cross Sections with 1% Annual Chance Water Surface Elevation
- Coastal Transect
- Base Flood Elevation Line (BFE)
- Limit of Study
- Jurisdiction Boundary
- Coastal Transect Baseline
- Profile Baseline
- Hydrographic Feature

MAP PANELS

- Digital Data Available
- No Digital Data Available
- Unmapped

The pin displayed on the map is an approximate point selected by the user and does not represent an authoritative property location.

This map complies with FEMA's standards for the use of digital flood maps if it is not void as described below. The basemap shown complies with FEMA's basemap accuracy standards.

The flood hazard information is derived directly from the authoritative NFHL web services provided by FEMA. This map was exported on 5/1/2019 at 1:57:01 PM and does not reflect changes or amendments subsequent to this date and time. The NFHL and effective information may change or become superseded by new data over time.

This map image is void if the one or more of the following map elements do not appear: basemap imagery, flood zone labels, legend, scale bar, map creation date, community identifiers, FIRM panel number, and FIRM effective date. Map images for unmapped and unmodernized areas cannot be used for regulatory purposes.

103°46'17.82"W

USGS The National Map: Orthoimagery. Data refreshed October, 2017.



32°15'46.13"N



Laboratory Analytical Results Summary

Iridium MDP1 28 21 Fed Com #006H (4/26/19)

Analyte	Method	NORTH @		EAST @		WEST @		SOUTH @	
		Sample ID	SURFACE	Sample ID	SURFACE	Sample ID	SURFACE	Sample ID	SURFACE
		Date	9/6/19	9/6/19	9/6/19	9/6/19	9/6/19	9/6/19	9/6/19
			mg/kg	mg/kg	mg/kg	mg/kg	mg/kg	mg/kg	mg/kg
Benzene	BTEX 8021B		<0.050	<0.050	<0.050	<0.050	<0.050	<0.050	<0.050
Toluene	BTEX 8021B		<0.050	<0.050	<0.050	<0.050	<0.050	<0.050	<0.050
Ethylbenzene	BTEX 8021B		<0.050	<0.050	<0.050	<0.050	<0.050	<0.050	<0.050
Total Xylenes	BTEX 8021B		<0.150	<0.150	<0.150	<0.150	<0.150	<0.150	<0.150
Total BTEX	BTEX 8021B		<0.300	<0.300	<0.300	<0.300	<0.300	<0.300	<0.300
Chloride	SM4500C-B		16	32	16	16	16	16	16
GRO	TPH 8015M		<10.0	<10.0	<10.0	<10.0	<10.0	<10.0	<10.0
DRO	TPH 8015M		<10.0	<10.0	<10.0	<10.0	<10.0	<10.0	<10.0
EXT DRO	TPH 8015M		<10.0	<10.0	<10.0	<10.0	<10.0	<10.0	<10.0

Analyte	Method	SP1 @		SP1 @ 1'		SP1 @ 2'	
		Sample ID	SURFACE	Sample ID	SURFACE	Sample ID	SURFACE
		Date	9/6/19	9/6/19	9/6/19	9/6/19	9/6/19
			mg/kg	mg/kg	mg/kg	mg/kg	mg/kg
Benzene	BTEX 8021B		<0.050	<0.050	<0.050	n/a	n/a
Toluene	BTEX 8021B		<0.050	<0.050	<0.050	n/a	n/a
Ethylbenzene	BTEX 8021B		<0.050	<0.050	<0.050	n/a	n/a
Total Xylenes	BTEX 8021B		<0.150	<0.150	<0.150	n/a	n/a
Total BTEX	BTEX 8021B		<0.300	<0.300	<0.300	n/a	n/a
Chloride	SM4500C-B		1040	16	16	16	16
GRO	TPH 8015M		<10.0	<10.0	<10.0	n/a	n/a
DRO	TPH 8015M		67.1	<10.0	<10.0	n/a	n/a
EXT DRO	TPH 8015M		15.4	<10.0	<10.0	n/a	n/a

Analyte	Method	SP2 @		SP2 @ 1'		SP2 @ 2'	
		Sample ID	SURFACE	Sample ID	SURFACE	Sample ID	SURFACE
		Date	9/6/19	9/6/19	9/6/19	9/6/19	9/6/19
			mg/kg	mg/kg	mg/kg	mg/kg	mg/kg
Benzene	BTEX 8021B		<0.050	<0.050	<0.050	n/a	n/a
Toluene	BTEX 8021B		<0.050	<0.050	<0.050	n/a	n/a
Ethylbenzene	BTEX 8021B		<0.050	<0.050	<0.050	n/a	n/a
Total Xylenes	BTEX 8021B		<0.150	<0.150	<0.150	n/a	n/a
Total BTEX	BTEX 8021B		<0.300	<0.300	<0.300	n/a	n/a
Chloride	SM4500C-B		1540	16	16	16	16
GRO	TPH 8015M		<10.0	<10.0	<10.0	n/a	n/a
DRO	TPH 8015M		72.6	<10.0	<10.0	n/a	n/a
EXT DRO	TPH 8015M		21.2	<10.0	<10.0	n/a	n/a

Analyte	Method	SP3 @		SP3 @ 1'		SP3 @ 2'	
		Sample ID	SURFACE	Sample ID	SURFACE	Sample ID	SURFACE
		Date	9/6/19	9/6/19	9/6/19	9/6/19	9/6/19
			mg/kg	mg/kg	mg/kg	mg/kg	mg/kg
Benzene	BTEX 8021B		<0.050	<0.050	<0.050	n/a	n/a
Toluene	BTEX 8021B		<0.050	<0.050	<0.050	n/a	n/a
Ethylbenzene	BTEX 8021B		<0.050	<0.050	<0.050	n/a	n/a
Total Xylenes	BTEX 8021B		<0.150	<0.150	<0.150	n/a	n/a
Total BTEX	BTEX 8021B		<0.300	<0.300	<0.300	n/a	<16.0
Chloride	SM4500C-B		1330	<16.0	<16.0	<16.0	<16.0
GRO	TPH 8015M		<10.0	<10.0	<10.0	n/a	n/a
DRO	TPH 8015M		371	<10.0	<10.0	n/a	n/a
EXT DRO	TPH 8015M		170	<10.0	<10.0	n/a	n/a

Laboratory Analytical Results Summary
Iridium MDP1 28 21 Fed Com #006H (4/26/19)

Analyte	Method	Sample ID Date	SP4 @ SURFACE 9/6/19 mg/kg	SP4 @ 1' 9/6/19 mg/kg	SP4 @ 2' 9/6/19 mg/kg
Benzene	BTEX 8021B		<0.050	<0.050	n/a
Toluene	BTEX 8021B		<0.050	<0.050	n/a
Ethylbenzene	BTEX 8021B		<0.050	<0.050	n/a
Total Xylenes	BTEX 8021B		<0.150	<0.150	n/a
Total BTEX	BTEX 8021B		<0.300	<0.300	n/a
Chloride	SM4500C-B		3920	32	16
GRO	TPH 8015M		<10.0	<10.0	n/a
DRO	TPH 8015M		145	<10.0	n/a
EXT DRO	TPH 8015M		38.4	<10.0	n/a

Analyte	Method	Sample ID Date	SP5 @ SURFACE 9/6/19 mg/kg	SP5 @ 1' 9/6/19 mg/kg	SP5 @ 2' 9/6/19 mg/kg
Benzene	BTEX 8021B		<0.050	<0.050	n/a
Toluene	BTEX 8021B		<0.050	<0.050	n/a
Ethylbenzene	BTEX 8021B		<0.050	<0.050	n/a
Total Xylenes	BTEX 8021B		<0.150	<0.150	n/a
Total BTEX	BTEX 8021B		<0.300	<0.300	n/a
Chloride	SM4500C-B		592	16	<16.0
GRO	TPH 8015M		<10.0	<10.0	n/a
DRO	TPH 8015M		16.2	<10.0	n/a
EXT DRO	TPH 8015M		<10.0	<10.0	n/a

Analyte	Method	Sample ID Date	SP6 @ SURFACE 9/6/19 mg/kg	SP6 @ 1' 9/6/19 mg/kg	SP6 @ 2' 9/6/19 mg/kg
Benzene	BTEX 8021B		<0.050	<0.050	n/a
Toluene	BTEX 8021B		<0.050	<0.050	n/a
Ethylbenzene	BTEX 8021B		<0.050	<0.050	n/a
Total Xylenes	BTEX 8021B		<0.150	<0.150	n/a
Total BTEX	BTEX 8021B		<0.300	<0.300	n/a
Chloride	SM4500C-B		3320	<16.0	<16.0
GRO	TPH 8015M		<10.0	<10.0	n/a
DRO	TPH 8015M		151	<10.0	n/a
EXT DRO	TPH 8015M		42.4	<10.0	n/a

Analyte	Method	Sample ID Date	SP7 @ SURFACE 9/6/19 mg/kg	SP7 @ 1' 9/6/19 mg/kg	SP7 @ 2' 9/6/19 mg/kg
Benzene	BTEX 8021B		<0.050	<0.050	n/a
Toluene	BTEX 8021B		<0.050	<0.050	n/a
Ethylbenzene	BTEX 8021B		<0.050	<0.050	n/a
Total Xylenes	BTEX 8021B		<0.150	<0.150	n/a
Total BTEX	BTEX 8021B		<0.300	<0.300	n/a
Chloride	SM4500C-B		3600	<16.0	<16.0
GRO	TPH 8015M		<10.0	<10.0	n/a
DRO	TPH 8015M		46.6	<10.0	n/a
EXT DRO	TPH 8015M		<10.0	<10.0	n/a

Laboratory Analytical Results Summary

Iridium MDP1 28 21 Fed Com #006H (4/26/19)

		Sample ID	SP8 @ SURFACE	SP8 @ 1'	SP8 @ 2'
Analyte	Method	Date	mg/kg	mg/kg	mg/kg
Benzene	BTEX 8021B		<0.050	<0.050	n/a
Toluene	BTEX 8021B		<0.050	<0.050	n/a
Ethylbenzene	BTEX 8021B		<0.050	<0.050	n/a
Total Xylenes	BTEX 8021B		<0.150	<0.150	n/a
Total BTEX	BTEX 8021B		<0.300	<0.300	n/a
Chloride	SM4500C-B		2920	32	<16.0
GRO	TPH 8015M		<10.0	<10.0	n/a
DRO	TPH 8015M		229	<10.0	n/a
EXT DRO	TPH 8015M		15.9	<10.0	n/a

		Sample ID	SP9 @ SURFACE	SP9 @ 1'	SP9 @ 2'
Analyte	Method	Date	mg/kg	mg/kg	mg/kg
Benzene	BTEX 8021B		<0.050	<0.050	n/a
Toluene	BTEX 8021B		<0.050	<0.050	n/a
Ethylbenzene	BTEX 8021B		<0.050	<0.050	n/a
Total Xylenes	BTEX 8021B		<0.150	<0.150	n/a
Total BTEX	BTEX 8021B		<0.300	<0.300	n/a
Chloride	SM4500C-B		3960	16	16
GRO	TPH 8015M		<10.0	<10.0	n/a
DRO	TPH 8015M		29.1	<10.0	n/a
EXT DRO	TPH 8015M		<10.0	<10.0	n/a

		Sample ID	SP10 @ SURFACE	SP10 @ 1'
Analyte	Method	Date	mg/kg	mg/kg
Benzene	BTEX 8021B		<0.050	n/a
Toluene	BTEX 8021B		<0.050	n/a
Ethylbenzene	BTEX 8021B		<0.050	n/a
Total Xylenes	BTEX 8021B		<0.150	n/a
Total BTEX	BTEX 8021B		<0.300	n/a
Chloride	SM4500C-B		432	16
GRO	TPH 8015M		<10.0	n/a
DRO	TPH 8015M		203	n/a
EXT DRO	TPH 8015M		28.5	n/a

		Sample ID	SP11 @ SURFACE	SP11 @ 1'
Analyte	Method	Date	mg/kg	mg/kg
Benzene	BTEX 8021B		<0.050	n/a
Toluene	BTEX 8021B		<0.050	n/a
Ethylbenzene	BTEX 8021B		<0.050	n/a
Total Xylenes	BTEX 8021B		<0.150	n/a
Total BTEX	BTEX 8021B		<0.300	n/a
Chloride	SM4500C-B		368	32
GRO	TPH 8015M		<10.0	n/a
DRO	TPH 8015M		202	n/a
EXT DRO	TPH 8015M		39.5	n/a



PHONE (575) 393-2326 ° 101 E. MARLAND ° HOBBS, NM 88240

September 18, 2019

Cliff Brunson

BBC International, Inc.

P.O. Box 805

Hobbs, NM 88241

RE: IRIDIUM MDP1 28 21 6H

Enclosed are the results of analyses for samples received by the laboratory on 09/13/19 13:30.

Cardinal Laboratories is accredited through Texas NELAP under certificate number T104704398-18-11. Accreditation applies to drinking water, non-potable water and solid and chemical materials. All accredited analytes are denoted by an asterisk (*). For a complete list of accredited analytes and matrices visit the TCEQ website at www.tceq.texas.gov/field/qa/lab_accred_certif.html.

Cardinal Laboratories is accredited through the State of Colorado Department of Public Health and Environment for:

Method EPA 552.2	Haloacetic Acids (HAA-5)
Method EPA 524.2	Total Trihalomethanes (TTHM)
Method EPA 524.4	Regulated VOCs (V1, V2, V3)

Accreditation applies to public drinking water matrices.

This report meets NELAP requirements and is made up of a cover page, analytical results, and a copy of the original chain-of-custody. If you have any questions concerning this report, please feel free to contact me.

Sincerely,

A handwritten signature in black ink that reads "Coley D. Keene". The signature is written in a cursive style with a large, stylized 'C' at the beginning.

Celey D. Keene

Lab Director/Quality Manager



PHONE (575) 393-2326 ° 101 E. MARLAND ° HOBBS, NM 88240

Analytical Results For:

BBC International, Inc.
 Cliff Brunson
 P.O. Box 805
 Hobbs NM, 88241
 Fax To: (575) 397-0397

Received:	09/13/2019	Sampling Date:	09/06/2019
Reported:	09/18/2019	Sampling Type:	Soil
Project Name:	IRIDIUM MDP1 28 21 6H	Sampling Condition:	Cool & Intact
Project Number:	(4/26/19)	Sample Received By:	Tamara Oldaker
Project Location:	OXY - EDDY CO NM		

Sample ID: NORTH @ SURFACE (H903169-01)

BTEX 8021B		mg/kg		Analyzed By: BF						
Analyte	Result	Reporting Limit	Analyzed	Method Blank	BS	% Recovery	True Value QC	RPD	Qualifier	
Benzene*	<0.050	0.050	09/16/2019	ND	1.84	92.0	2.00	6.79		
Toluene*	<0.050	0.050	09/16/2019	ND	1.89	94.4	2.00	4.62		
Ethylbenzene*	<0.050	0.050	09/16/2019	ND	1.94	96.9	2.00	4.64		
Total Xylenes*	<0.150	0.150	09/16/2019	ND	5.87	97.9	6.00	5.18		
Total BTEX	<0.300	0.300	09/16/2019	ND						

Surrogate: 4-Bromofluorobenzene (PID) 79.5 % 73.3-129

Chloride, SM4500Cl-B		mg/kg		Analyzed By: AC						
Analyte	Result	Reporting Limit	Analyzed	Method Blank	BS	% Recovery	True Value QC	RPD	Qualifier	
Chloride	16.0	16.0	09/16/2019	ND	432	108	400	3.77		

TPH 8015M		mg/kg		Analyzed By: MS					
Analyte	Result	Reporting Limit	Analyzed	Method Blank	BS	% Recovery	True Value QC	RPD	Qualifier
GRO C6-C10*	<10.0	10.0	09/16/2019	ND	202	101	200	3.54	
DRO >C10-C28*	<10.0	10.0	09/16/2019	ND	193	96.6	200	4.33	
EXT DRO >C28-C36	<10.0	10.0	09/16/2019	ND					

Surrogate: 1-Chlorooctane 89.4 % 41-142

Surrogate: 1-Chlorooctadecane 97.3 % 37.6-147

Cardinal Laboratories

*=Accredited Analyte

PLEASE NOTE: Liability and Damages. Cardinal's liability and client's exclusive remedy for any claim arising, whether based in contract or tort, shall be limited to the amount paid by client for analyses. All claims, including those for negligence and any other cause whatsoever shall be deemed waived unless made in writing and received by Cardinal within thirty (30) days after completion of the applicable service. In no event shall Cardinal be liable for incidental or consequential damages, including, without limitation, business interruptions, loss of use, or loss of profits incurred by client, its subsidiaries, affiliates or successors arising out of or related to the performance of the services hereunder by Cardinal, regardless of whether such claim is based upon any of the above stated reasons or otherwise. Results relate only to the samples identified above. This report shall not be reproduced except in full with written approval of Cardinal Laboratories.

Celey D. Keene, Lab Director/Quality Manager



PHONE (575) 393-2326 ° 101 E. MARLAND ° HOBBS, NM 88240

Analytical Results For:

BBC International, Inc.
 Cliff Brunson
 P.O. Box 805
 Hobbs NM, 88241
 Fax To: (575) 397-0397

Received:	09/13/2019	Sampling Date:	09/06/2019
Reported:	09/18/2019	Sampling Type:	Soil
Project Name:	IRIDIUM MDP1 28 21 6H	Sampling Condition:	Cool & Intact
Project Number:	(4/26/19)	Sample Received By:	Tamara Oldaker
Project Location:	OXY - EDDY CO NM		

Sample ID: EAST @ SURFACE (H903169-02)

BTEX 8021B		mg/kg		Analyzed By: BF						
Analyte	Result	Reporting Limit	Analyzed	Method Blank	BS	% Recovery	True Value QC	RPD	Qualifier	
Benzene*	<0.050	0.050	09/16/2019	ND	1.84	92.0	2.00	6.79		
Toluene*	<0.050	0.050	09/16/2019	ND	1.89	94.4	2.00	4.62		
Ethylbenzene*	<0.050	0.050	09/16/2019	ND	1.94	96.9	2.00	4.64		
Total Xylenes*	<0.150	0.150	09/16/2019	ND	5.87	97.9	6.00	5.18		
Total BTEX	<0.300	0.300	09/16/2019	ND						

Surrogate: 4-Bromofluorobenzene (PID) 77.3 % 73.3-129

Chloride, SM4500Cl-B		mg/kg		Analyzed By: AC						
Analyte	Result	Reporting Limit	Analyzed	Method Blank	BS	% Recovery	True Value QC	RPD	Qualifier	
Chloride	32.0	16.0	09/16/2019	ND	432	108	400	3.77		

TPH 8015M		mg/kg		Analyzed By: MS					
Analyte	Result	Reporting Limit	Analyzed	Method Blank	BS	% Recovery	True Value QC	RPD	Qualifier
GRO C6-C10*	<10.0	10.0	09/16/2019	ND	202	101	200	3.54	
DRO >C10-C28*	<10.0	10.0	09/16/2019	ND	193	96.6	200	4.33	
EXT DRO >C28-C36	<10.0	10.0	09/16/2019	ND					

Surrogate: 1-Chlorooctane 90.7 % 41-142

Surrogate: 1-Chlorooctadecane 96.8 % 37.6-147

Cardinal Laboratories

*=Accredited Analyte

PLEASE NOTE: Liability and Damages. Cardinal's liability and client's exclusive remedy for any claim arising, whether based in contract or tort, shall be limited to the amount paid by client for analyses. All claims, including those for negligence and any other cause whatsoever shall be deemed waived unless made in writing and received by Cardinal within thirty (30) days after completion of the applicable service. In no event shall Cardinal be liable for incidental or consequential damages, including, without limitation, business interruptions, loss of use, or loss of profits incurred by client, its subsidiaries, affiliates or successors arising out of or related to the performance of the services hereunder by Cardinal, regardless of whether such claim is based upon any of the above stated reasons or otherwise. Results relate only to the samples identified above. This report shall not be reproduced except in full with written approval of Cardinal Laboratories.

Celey D. Keene, Lab Director/Quality Manager



PHONE (575) 393-2326 ° 101 E. MARLAND ° HOBBS, NM 88240

Analytical Results For:

BBC International, Inc.
 Cliff Brunson
 P.O. Box 805
 Hobbs NM, 88241
 Fax To: (575) 397-0397

Received:	09/13/2019	Sampling Date:	09/06/2019
Reported:	09/18/2019	Sampling Type:	Soil
Project Name:	IRIDIUM MDP1 28 21 6H	Sampling Condition:	Cool & Intact
Project Number:	(4/26/19)	Sample Received By:	Tamara Oldaker
Project Location:	OXY - EDDY CO NM		

Sample ID: WEST @ SURFACE (H903169-03)

BTEX 8021B		mg/kg		Analyzed By: BF						
Analyte	Result	Reporting Limit	Analyzed	Method Blank	BS	% Recovery	True Value QC	RPD	Qualifier	
Benzene*	<0.050	0.050	09/16/2019	ND	1.84	92.0	2.00	6.79		
Toluene*	<0.050	0.050	09/16/2019	ND	1.89	94.4	2.00	4.62		
Ethylbenzene*	<0.050	0.050	09/16/2019	ND	1.94	96.9	2.00	4.64		
Total Xylenes*	<0.150	0.150	09/16/2019	ND	5.87	97.9	6.00	5.18		
Total BTEX	<0.300	0.300	09/16/2019	ND						

Surrogate: 4-Bromofluorobenzene (PID) 76.5 % 73.3-129

Chloride, SM4500Cl-B		mg/kg		Analyzed By: AC					
Analyte	Result	Reporting Limit	Analyzed	Method Blank	BS	% Recovery	True Value QC	RPD	Qualifier
Chloride	16.0	16.0	09/16/2019	ND	432	108	400	3.77	

TPH 8015M		mg/kg		Analyzed By: MS					
Analyte	Result	Reporting Limit	Analyzed	Method Blank	BS	% Recovery	True Value QC	RPD	Qualifier
GRO C6-C10*	<10.0	10.0	09/16/2019	ND	202	101	200	3.54	
DRO >C10-C28*	<10.0	10.0	09/16/2019	ND	193	96.6	200	4.33	
EXT DRO >C28-C36	<10.0	10.0	09/16/2019	ND					

Surrogate: 1-Chlorooctane 88.5 % 41-142

Surrogate: 1-Chlorooctadecane 94.4 % 37.6-147

Cardinal Laboratories

*=Accredited Analyte

PLEASE NOTE: Liability and Damages. Cardinal's liability and client's exclusive remedy for any claim arising, whether based in contract or tort, shall be limited to the amount paid by client for analyses. All claims, including those for negligence and any other cause whatsoever shall be deemed waived unless made in writing and received by Cardinal within thirty (30) days after completion of the applicable service. In no event shall Cardinal be liable for incidental or consequential damages, including, without limitation, business interruptions, loss of use, or loss of profits incurred by client, its subsidiaries, affiliates or successors arising out of or related to the performance of the services hereunder by Cardinal, regardless of whether such claim is based upon any of the above stated reasons or otherwise. Results relate only to the samples identified above. This report shall not be reproduced except in full with written approval of Cardinal Laboratories.

Celey D. Keene, Lab Director/Quality Manager



PHONE (575) 393-2326 ° 101 E. MARLAND ° HOBBS, NM 88240

Analytical Results For:

BBC International, Inc.
 Cliff Brunson
 P.O. Box 805
 Hobbs NM, 88241
 Fax To: (575) 397-0397

Received:	09/13/2019	Sampling Date:	09/06/2019
Reported:	09/18/2019	Sampling Type:	Soil
Project Name:	IRIDIUM MDP1 28 21 6H	Sampling Condition:	Cool & Intact
Project Number:	(4/26/19)	Sample Received By:	Tamara Oldaker
Project Location:	OXY - EDDY CO NM		

Sample ID: SOUTH @ SURFACE (H903169-04)

BTEX 8021B		mg/kg		Analyzed By: BF						
Analyte	Result	Reporting Limit	Analyzed	Method Blank	BS	% Recovery	True Value QC	RPD	Qualifier	
Benzene*	<0.050	0.050	09/16/2019	ND	1.84	92.0	2.00	6.79		
Toluene*	<0.050	0.050	09/16/2019	ND	1.89	94.4	2.00	4.62		
Ethylbenzene*	<0.050	0.050	09/16/2019	ND	1.94	96.9	2.00	4.64		
Total Xylenes*	<0.150	0.150	09/16/2019	ND	5.87	97.9	6.00	5.18		
Total BTEX	<0.300	0.300	09/16/2019	ND						

Surrogate: 4-Bromofluorobenzene (PID) 76.9 % 73.3-129

Chloride, SM4500Cl-B		mg/kg		Analyzed By: AC						
Analyte	Result	Reporting Limit	Analyzed	Method Blank	BS	% Recovery	True Value QC	RPD	Qualifier	
Chloride	16.0	16.0	09/16/2019	ND	432	108	400	3.77		

TPH 8015M		mg/kg		Analyzed By: MS					
Analyte	Result	Reporting Limit	Analyzed	Method Blank	BS	% Recovery	True Value QC	RPD	Qualifier
GRO C6-C10*	<10.0	10.0	09/16/2019	ND	202	101	200	3.54	
DRO >C10-C28*	<10.0	10.0	09/16/2019	ND	193	96.6	200	4.33	
EXT DRO >C28-C36	<10.0	10.0	09/16/2019	ND					

Surrogate: 1-Chlorooctane 90.2 % 41-142

Surrogate: 1-Chlorooctadecane 97.1 % 37.6-147

Cardinal Laboratories

*=Accredited Analyte

PLEASE NOTE: Liability and Damages. Cardinal's liability and client's exclusive remedy for any claim arising, whether based in contract or tort, shall be limited to the amount paid by client for analyses. All claims, including those for negligence and any other cause whatsoever shall be deemed waived unless made in writing and received by Cardinal within thirty (30) days after completion of the applicable service. In no event shall Cardinal be liable for incidental or consequential damages, including, without limitation, business interruptions, loss of use, or loss of profits incurred by client, its subsidiaries, affiliates or successors arising out of or related to the performance of the services hereunder by Cardinal, regardless of whether such claim is based upon any of the above stated reasons or otherwise. Results relate only to the samples identified above. This report shall not be reproduced except in full with written approval of Cardinal Laboratories.

Celey D. Keene, Lab Director/Quality Manager



PHONE (575) 393-2326 ° 101 E. MARLAND ° HOBBS, NM 88240

Analytical Results For:

BBC International, Inc.
 Cliff Brunson
 P.O. Box 805
 Hobbs NM, 88241
 Fax To: (575) 397-0397

Received:	09/13/2019	Sampling Date:	09/06/2019
Reported:	09/18/2019	Sampling Type:	Soil
Project Name:	IRIDIUM MDP1 28 21 6H	Sampling Condition:	Cool & Intact
Project Number:	(4/26/19)	Sample Received By:	Tamara Oldaker
Project Location:	OXY - EDDY CO NM		

Sample ID: SP 1 @ SURFACE (H903169-05)

BTEX 8021B		mg/kg		Analyzed By: BF						
Analyte	Result	Reporting Limit	Analyzed	Method Blank	BS	% Recovery	True Value QC	RPD	Qualifier	
Benzene*	<0.050	0.050	09/16/2019	ND	1.84	92.0	2.00	6.79		
Toluene*	<0.050	0.050	09/16/2019	ND	1.89	94.4	2.00	4.62		
Ethylbenzene*	<0.050	0.050	09/16/2019	ND	1.94	96.9	2.00	4.64		
Total Xylenes*	<0.150	0.150	09/16/2019	ND	5.87	97.9	6.00	5.18		
Total BTEX	<0.300	0.300	09/16/2019	ND						

Surrogate: 4-Bromofluorobenzene (PID) 77.3 % 73.3-129

Chloride, SM4500Cl-B		mg/kg		Analyzed By: AC						
Analyte	Result	Reporting Limit	Analyzed	Method Blank	BS	% Recovery	True Value QC	RPD	Qualifier	
Chloride	1040	16.0	09/16/2019	ND	432	108	400	3.77		

TPH 8015M		mg/kg		Analyzed By: MS					
Analyte	Result	Reporting Limit	Analyzed	Method Blank	BS	% Recovery	True Value QC	RPD	Qualifier
GRO C6-C10*	<10.0	10.0	09/16/2019	ND	202	101	200	3.54	
DRO >C10-C28*	67.1	10.0	09/16/2019	ND	193	96.6	200	4.33	
EXT DRO >C28-C36	15.4	10.0	09/16/2019	ND					

Surrogate: 1-Chlorooctane 80.6 % 41-142

Surrogate: 1-Chlorooctadecane 93.1 % 37.6-147

Cardinal Laboratories

*=Accredited Analyte

PLEASE NOTE: Liability and Damages. Cardinal's liability and client's exclusive remedy for any claim arising, whether based in contract or tort, shall be limited to the amount paid by client for analyses. All claims, including those for negligence and any other cause whatsoever shall be deemed waived unless made in writing and received by Cardinal within thirty (30) days after completion of the applicable service. In no event shall Cardinal be liable for incidental or consequential damages, including, without limitation, business interruptions, loss of use, or loss of profits incurred by client, its subsidiaries, affiliates or successors arising out of or related to the performance of the services hereunder by Cardinal, regardless of whether such claim is based upon any of the above stated reasons or otherwise. Results relate only to the samples identified above. This report shall not be reproduced except in full with written approval of Cardinal Laboratories.

Celey D. Keene, Lab Director/Quality Manager



PHONE (575) 393-2326 ° 101 E. MARLAND ° HOBBS, NM 88240

Analytical Results For:

BBC International, Inc.
 Cliff Brunson
 P.O. Box 805
 Hobbs NM, 88241
 Fax To: (575) 397-0397

Received:	09/13/2019	Sampling Date:	09/06/2019
Reported:	09/18/2019	Sampling Type:	Soil
Project Name:	IRIDIUM MDP1 28 21 6H	Sampling Condition:	Cool & Intact
Project Number:	(4/26/19)	Sample Received By:	Tamara Oldaker
Project Location:	OXY - EDDY CO NM		

Sample ID: SP 1 @ 1' (H903169-06)

BTEX 8021B		mg/kg		Analyzed By: BF						
Analyte	Result	Reporting Limit	Analyzed	Method Blank	BS	% Recovery	True Value QC	RPD	Qualifier	
Benzene*	<0.050	0.050	09/16/2019	ND	1.84	92.0	2.00	6.79		
Toluene*	<0.050	0.050	09/16/2019	ND	1.89	94.4	2.00	4.62		
Ethylbenzene*	<0.050	0.050	09/16/2019	ND	1.94	96.9	2.00	4.64		
Total Xylenes*	<0.150	0.150	09/16/2019	ND	5.87	97.9	6.00	5.18		
Total BTEX	<0.300	0.300	09/16/2019	ND						

Surrogate: 4-Bromofluorobenzene (PID) 77.1 % 73.3-129

Chloride, SM4500Cl-B		mg/kg		Analyzed By: AC					
Analyte	Result	Reporting Limit	Analyzed	Method Blank	BS	% Recovery	True Value QC	RPD	Qualifier
Chloride	16.0	16.0	09/16/2019	ND	432	108	400	3.77	

TPH 8015M		mg/kg		Analyzed By: MS					
Analyte	Result	Reporting Limit	Analyzed	Method Blank	BS	% Recovery	True Value QC	RPD	Qualifier
GRO C6-C10*	<10.0	10.0	09/16/2019	ND	202	101	200	3.54	
DRO >C10-C28*	<10.0	10.0	09/16/2019	ND	193	96.6	200	4.33	
EXT DRO >C28-C36	<10.0	10.0	09/16/2019	ND					

Surrogate: 1-Chlorooctane 88.7 % 41-142

Surrogate: 1-Chlorooctadecane 95.5 % 37.6-147

Cardinal Laboratories

*=Accredited Analyte

PLEASE NOTE: Liability and Damages. Cardinal's liability and client's exclusive remedy for any claim arising, whether based in contract or tort, shall be limited to the amount paid by client for analyses. All claims, including those for negligence and any other cause whatsoever shall be deemed waived unless made in writing and received by Cardinal within thirty (30) days after completion of the applicable service. In no event shall Cardinal be liable for incidental or consequential damages, including, without limitation, business interruptions, loss of use, or loss of profits incurred by client, its subsidiaries, affiliates or successors arising out of or related to the performance of the services hereunder by Cardinal, regardless of whether such claim is based upon any of the above stated reasons or otherwise. Results relate only to the samples identified above. This report shall not be reproduced except in full with written approval of Cardinal Laboratories.

Celey D. Keene, Lab Director/Quality Manager



PHONE (575) 393-2326 ° 101 E. MARLAND ° HOBBS, NM 88240

Analytical Results For:

BBC International, Inc.
 Cliff Brunson
 P.O. Box 805
 Hobbs NM, 88241
 Fax To: (575) 397-0397

Received: 09/13/2019
 Reported: 09/18/2019
 Project Name: IRIDIUM MDP1 28 21 6H
 Project Number: (4/26/19)
 Project Location: OXY - EDDY CO NM

Sampling Date: 09/06/2019
 Sampling Type: Soil
 Sampling Condition: Cool & Intact
 Sample Received By: Tamara Oldaker

Sample ID: SP 1 @ 2' (H903169-07)

Chloride, SM4500Cl-B	mg/kg	Analyzed By: AC							
Analyte	Result	Reporting Limit	Analyzed	Method Blank	BS	% Recovery	True Value QC	RPD	Qualifier
Chloride	16.0	16.0	09/16/2019	ND	432	108	400	3.77	

Cardinal Laboratories

*=Accredited Analyte

PLEASE NOTE: Liability and Damages. Cardinal's liability and client's exclusive remedy for any claim arising, whether based in contract or tort, shall be limited to the amount paid by client for analyses. All claims, including those for negligence and any other cause whatsoever shall be deemed waived unless made in writing and received by Cardinal within thirty (30) days after completion of the applicable service. In no event shall Cardinal be liable for incidental or consequential damages, including, without limitation, business interruptions, loss of use, or loss of profits incurred by client, its subsidiaries, affiliates or successors arising out of or related to the performance of the services hereunder by Cardinal, regardless of whether such claim is based upon any of the above stated reasons or otherwise. Results relate only to the samples identified above. This report shall not be reproduced except in full with written approval of Cardinal Laboratories.

Celey D. Keene, Lab Director/Quality Manager



PHONE (575) 393-2326 ° 101 E. MARLAND ° HOBBS, NM 88240

Analytical Results For:

BBC International, Inc.
 Cliff Brunson
 P.O. Box 805
 Hobbs NM, 88241
 Fax To: (575) 397-0397

Received:	09/13/2019	Sampling Date:	09/06/2019
Reported:	09/18/2019	Sampling Type:	Soil
Project Name:	IRIDIUM MDP1 28 21 6H	Sampling Condition:	Cool & Intact
Project Number:	(4/26/19)	Sample Received By:	Tamara Oldaker
Project Location:	OXY - EDDY CO NM		

Sample ID: SP 2 @ SURFACE (H903169-08)

BTEX 8021B			mg/kg		Analyzed By: BF				
Analyte	Result	Reporting Limit	Analyzed	Method Blank	BS	% Recovery	True Value QC	RPD	Qualifier
Benzene*	<0.050	0.050	09/16/2019	ND	1.84	92.0	2.00	6.79	
Toluene*	<0.050	0.050	09/16/2019	ND	1.89	94.4	2.00	4.62	
Ethylbenzene*	<0.050	0.050	09/16/2019	ND	1.94	96.9	2.00	4.64	
Total Xylenes*	<0.150	0.150	09/16/2019	ND	5.87	97.9	6.00	5.18	
Total BTEX	<0.300	0.300	09/16/2019	ND					

Surrogate: 4-Bromofluorobenzene (PID) 74.7 % 73.3-129

Chloride, SM4500Cl-B			mg/kg		Analyzed By: AC				
Analyte	Result	Reporting Limit	Analyzed	Method Blank	BS	% Recovery	True Value QC	RPD	Qualifier
Chloride	1540	16.0	09/16/2019	ND	432	108	400	3.77	

TPH 8015M			mg/kg		Analyzed By: MS				
Analyte	Result	Reporting Limit	Analyzed	Method Blank	BS	% Recovery	True Value QC	RPD	Qualifier
GRO C6-C10*	<10.0	10.0	09/16/2019	ND	202	101	200	3.54	
DRO >C10-C28*	72.6	10.0	09/16/2019	ND	193	96.6	200	4.33	
EXT DRO >C28-C36	21.2	10.0	09/16/2019	ND					

Surrogate: 1-Chlorooctane 81.1 % 41-142

Surrogate: 1-Chlorooctadecane 94.4 % 37.6-147

Cardinal Laboratories

*=Accredited Analyte

PLEASE NOTE: Liability and Damages. Cardinal's liability and client's exclusive remedy for any claim arising, whether based in contract or tort, shall be limited to the amount paid by client for analyses. All claims, including those for negligence and any other cause whatsoever shall be deemed waived unless made in writing and received by Cardinal within thirty (30) days after completion of the applicable service. In no event shall Cardinal be liable for incidental or consequential damages, including, without limitation, business interruptions, loss of use, or loss of profits incurred by client, its subsidiaries, affiliates or successors arising out of or related to the performance of the services hereunder by Cardinal, regardless of whether such claim is based upon any of the above stated reasons or otherwise. Results relate only to the samples identified above. This report shall not be reproduced except in full with written approval of Cardinal Laboratories.

Celey D. Keene, Lab Director/Quality Manager



PHONE (575) 393-2326 ° 101 E. MARLAND ° HOBBS, NM 88240

Analytical Results For:

BBC International, Inc.
 Cliff Brunson
 P.O. Box 805
 Hobbs NM, 88241
 Fax To: (575) 397-0397

Received:	09/13/2019	Sampling Date:	09/06/2019
Reported:	09/18/2019	Sampling Type:	Soil
Project Name:	IRIDIUM MDP1 28 21 6H	Sampling Condition:	Cool & Intact
Project Number:	(4/26/19)	Sample Received By:	Tamara Oldaker
Project Location:	OXY - EDDY CO NM		

Sample ID: SP 2 @ 1' (H903169-09)

BTEX 8021B		mg/kg		Analyzed By: BF						
Analyte	Result	Reporting Limit	Analyzed	Method Blank	BS	% Recovery	True Value QC	RPD	Qualifier	
Benzene*	<0.050	0.050	09/17/2019	ND	1.89	94.6	2.00	1.38		
Toluene*	<0.050	0.050	09/17/2019	ND	1.90	95.0	2.00	1.66		
Ethylbenzene*	<0.050	0.050	09/17/2019	ND	1.91	95.3	2.00	2.16		
Total Xylenes*	<0.150	0.150	09/17/2019	ND	5.67	94.5	6.00	1.34		
Total BTEX	<0.300	0.300	09/17/2019	ND						

Surrogate: 4-Bromofluorobenzene (PID) 76.5 % 73.3-129

Chloride, SM4500Cl-B		mg/kg		Analyzed By: AC					
Analyte	Result	Reporting Limit	Analyzed	Method Blank	BS	% Recovery	True Value QC	RPD	Qualifier
Chloride	16.0	16.0	09/16/2019	ND	432	108	400	3.77	

TPH 8015M		mg/kg		Analyzed By: MS					
Analyte	Result	Reporting Limit	Analyzed	Method Blank	BS	% Recovery	True Value QC	RPD	Qualifier
GRO C6-C10*	<10.0	10.0	09/16/2019	ND	202	101	200	3.54	
DRO >C10-C28*	<10.0	10.0	09/16/2019	ND	193	96.6	200	4.33	
EXT DRO >C28-C36	<10.0	10.0	09/16/2019	ND					

Surrogate: 1-Chlorooctane 90.4 % 41-142

Surrogate: 1-Chlorooctadecane 97.6 % 37.6-147

Cardinal Laboratories

*=Accredited Analyte

PLEASE NOTE: Liability and Damages. Cardinal's liability and client's exclusive remedy for any claim arising, whether based in contract or tort, shall be limited to the amount paid by client for analyses. All claims, including those for negligence and any other cause whatsoever shall be deemed waived unless made in writing and received by Cardinal within thirty (30) days after completion of the applicable service. In no event shall Cardinal be liable for incidental or consequential damages, including, without limitation, business interruptions, loss of use, or loss of profits incurred by client, its subsidiaries, affiliates or successors arising out of or related to the performance of the services hereunder by Cardinal, regardless of whether such claim is based upon any of the above stated reasons or otherwise. Results relate only to the samples identified above. This report shall not be reproduced except in full with written approval of Cardinal Laboratories.

Celey D. Keene, Lab Director/Quality Manager



PHONE (575) 393-2326 ° 101 E. MARLAND ° HOBBS, NM 88240

Analytical Results For:

BBC International, Inc.
 Cliff Brunson
 P.O. Box 805
 Hobbs NM, 88241
 Fax To: (575) 397-0397

Received: 09/13/2019
 Reported: 09/18/2019
 Project Name: IRIDIUM MDP1 28 21 6H
 Project Number: (4/26/19)
 Project Location: OXY - EDDY CO NM

Sampling Date: 09/06/2019
 Sampling Type: Soil
 Sampling Condition: Cool & Intact
 Sample Received By: Tamara Oldaker

Sample ID: SP 2 @ 2' (H903169-10)

Chloride, SM4500Cl-B	mg/kg	Analyzed By: AC							
Analyte	Result	Reporting Limit	Analyzed	Method Blank	BS	% Recovery	True Value QC	RPD	Qualifier
Chloride	16.0	16.0	09/16/2019	ND	432	108	400	3.77	

Cardinal Laboratories

*=Accredited Analyte

PLEASE NOTE: Liability and Damages. Cardinal's liability and client's exclusive remedy for any claim arising, whether based in contract or tort, shall be limited to the amount paid by client for analyses. All claims, including those for negligence and any other cause whatsoever shall be deemed waived unless made in writing and received by Cardinal within thirty (30) days after completion of the applicable service. In no event shall Cardinal be liable for incidental or consequential damages, including, without limitation, business interruptions, loss of use, or loss of profits incurred by client, its subsidiaries, affiliates or successors arising out of or related to the performance of the services hereunder by Cardinal, regardless of whether such claim is based upon any of the above stated reasons or otherwise. Results relate only to the samples identified above. This report shall not be reproduced except in full with written approval of Cardinal Laboratories.

Celey D. Keene, Lab Director/Quality Manager



PHONE (575) 393-2326 ° 101 E. MARLAND ° HOBBS, NM 88240

Analytical Results For:

BBC International, Inc.
 Cliff Brunson
 P.O. Box 805
 Hobbs NM, 88241
 Fax To: (575) 397-0397

Received:	09/13/2019	Sampling Date:	09/06/2019
Reported:	09/18/2019	Sampling Type:	Soil
Project Name:	IRIDIUM MDP1 28 21 6H	Sampling Condition:	Cool & Intact
Project Number:	(4/26/19)	Sample Received By:	Tamara Oldaker
Project Location:	OXY - EDDY CO NM		

Sample ID: SP 3 @ SURFACE (H903169-11)

BTEX 8021B			mg/kg		Analyzed By: BF					
Analyte	Result	Reporting Limit	Analyzed	Method Blank	BS	% Recovery	True Value QC	RPD	Qualifier	
Benzene*	<0.050	0.050	09/17/2019	ND	1.89	94.6	2.00	1.38		
Toluene*	<0.050	0.050	09/17/2019	ND	1.90	95.0	2.00	1.66		
Ethylbenzene*	<0.050	0.050	09/17/2019	ND	1.91	95.3	2.00	2.16		
Total Xylenes*	<0.150	0.150	09/17/2019	ND	5.67	94.5	6.00	1.34		
Total BTEX	<0.300	0.300	09/17/2019	ND						

Surrogate: 4-Bromofluorobenzene (PID) 74.8 % 73.3-129

Chloride, SM4500Cl-B		mg/kg		Analyzed By: AC					
Analyte	Result	Reporting Limit	Analyzed	Method Blank	BS	% Recovery	True Value QC	RPD	Qualifier
Chloride	1330	16.0	09/16/2019	ND	432	108	400	3.77	

TPH 8015M		mg/kg		Analyzed By: MS					
Analyte	Result	Reporting Limit	Analyzed	Method Blank	BS	% Recovery	True Value QC	RPD	Qualifier
GRO C6-C10*	<10.0	10.0	09/16/2019	ND	202	101	200	3.54	
DRO >C10-C28*	371	10.0	09/16/2019	ND	193	96.6	200	4.33	
EXT DRO >C28-C36	170	10.0	09/16/2019	ND					

Surrogate: 1-Chlorooctane 69.3 % 41-142

Surrogate: 1-Chlorooctadecane 108 % 37.6-147

Cardinal Laboratories

*=Accredited Analyte

PLEASE NOTE: Liability and Damages. Cardinal's liability and client's exclusive remedy for any claim arising, whether based in contract or tort, shall be limited to the amount paid by client for analyses. All claims, including those for negligence and any other cause whatsoever shall be deemed waived unless made in writing and received by Cardinal within thirty (30) days after completion of the applicable service. In no event shall Cardinal be liable for incidental or consequential damages, including, without limitation, business interruptions, loss of use, or loss of profits incurred by client, its subsidiaries, affiliates or successors arising out of or related to the performance of the services hereunder by Cardinal, regardless of whether such claim is based upon any of the above stated reasons or otherwise. Results relate only to the samples identified above. This report shall not be reproduced except in full with written approval of Cardinal Laboratories.

Celey D. Keene, Lab Director/Quality Manager



PHONE (575) 393-2326 ° 101 E. MARLAND ° HOBBS, NM 88240

Analytical Results For:

BBC International, Inc.
 Cliff Brunson
 P.O. Box 805
 Hobbs NM, 88241
 Fax To: (575) 397-0397

Received:	09/13/2019	Sampling Date:	09/06/2019
Reported:	09/18/2019	Sampling Type:	Soil
Project Name:	IRIDIUM MDP1 28 21 6H	Sampling Condition:	Cool & Intact
Project Number:	(4/26/19)	Sample Received By:	Tamara Oldaker
Project Location:	OXY - EDDY CO NM		

Sample ID: SP 3 @ 1' (H903169-12)

BTEX 8021B		mg/kg		Analyzed By: BF						
Analyte	Result	Reporting Limit	Analyzed	Method Blank	BS	% Recovery	True Value QC	RPD	Qualifier	
Benzene*	<0.050	0.050	09/17/2019	ND	1.89	94.6	2.00	1.38		
Toluene*	<0.050	0.050	09/17/2019	ND	1.90	95.0	2.00	1.66		
Ethylbenzene*	<0.050	0.050	09/17/2019	ND	1.91	95.3	2.00	2.16		
Total Xylenes*	<0.150	0.150	09/17/2019	ND	5.67	94.5	6.00	1.34		
Total BTEX	<0.300	0.300	09/17/2019	ND						

Surrogate: 4-Bromofluorobenzene (PID) 77.3 % 73.3-129

Chloride, SM4500Cl-B		mg/kg		Analyzed By: AC						
Analyte	Result	Reporting Limit	Analyzed	Method Blank	BS	% Recovery	True Value QC	RPD	Qualifier	
Chloride	<16.0	16.0	09/16/2019	ND	432	108	400	3.77		

TPH 8015M		mg/kg		Analyzed By: MS					
Analyte	Result	Reporting Limit	Analyzed	Method Blank	BS	% Recovery	True Value QC	RPD	Qualifier
GRO C6-C10*	<10.0	10.0	09/16/2019	ND	202	101	200	3.54	
DRO >C10-C28*	<10.0	10.0	09/16/2019	ND	193	96.6	200	4.33	
EXT DRO >C28-C36	<10.0	10.0	09/16/2019	ND					

Surrogate: 1-Chlorooctane 89.0 % 41-142

Surrogate: 1-Chlorooctadecane 96.6 % 37.6-147

Cardinal Laboratories

*=Accredited Analyte

PLEASE NOTE: Liability and Damages. Cardinal's liability and client's exclusive remedy for any claim arising, whether based in contract or tort, shall be limited to the amount paid by client for analyses. All claims, including those for negligence and any other cause whatsoever shall be deemed waived unless made in writing and received by Cardinal within thirty (30) days after completion of the applicable service. In no event shall Cardinal be liable for incidental or consequential damages, including, without limitation, business interruptions, loss of use, or loss of profits incurred by client, its subsidiaries, affiliates or successors arising out of or related to the performance of the services hereunder by Cardinal, regardless of whether such claim is based upon any of the above stated reasons or otherwise. Results relate only to the samples identified above. This report shall not be reproduced except in full with written approval of Cardinal Laboratories.

Celey D. Keene, Lab Director/Quality Manager



PHONE (575) 393-2326 ° 101 E. MARLAND ° HOBBS, NM 88240

Analytical Results For:

BBC International, Inc.
 Cliff Brunson
 P.O. Box 805
 Hobbs NM, 88241
 Fax To: (575) 397-0397

Received: 09/13/2019
 Reported: 09/18/2019
 Project Name: IRIDIUM MDP1 28 21 6H
 Project Number: (4/26/19)
 Project Location: OXY - EDDY CO NM

Sampling Date: 09/06/2019
 Sampling Type: Soil
 Sampling Condition: Cool & Intact
 Sample Received By: Tamara Oldaker

Sample ID: SP 3 @ 2' (H903169-13)

Chloride, SM4500Cl-B		mg/kg		Analyzed By: AC					
Analyte	Result	Reporting Limit	Analyzed	Method Blank	BS	% Recovery	True Value QC	RPD	Qualifier
Chloride	<16.0	16.0	09/16/2019	ND	432	108	400	3.77	

Cardinal Laboratories

*=Accredited Analyte

PLEASE NOTE: Liability and Damages. Cardinal's liability and client's exclusive remedy for any claim arising, whether based in contract or tort, shall be limited to the amount paid by client for analyses. All claims, including those for negligence and any other cause whatsoever shall be deemed waived unless made in writing and received by Cardinal within thirty (30) days after completion of the applicable service. In no event shall Cardinal be liable for incidental or consequential damages, including, without limitation, business interruptions, loss of use, or loss of profits incurred by client, its subsidiaries, affiliates or successors arising out of or related to the performance of the services hereunder by Cardinal, regardless of whether such claim is based upon any of the above stated reasons or otherwise. Results relate only to the samples identified above. This report shall not be reproduced except in full with written approval of Cardinal Laboratories.

Celey D. Keene, Lab Director/Quality Manager



PHONE (575) 393-2326 ° 101 E. MARLAND ° HOBBS, NM 88240

Analytical Results For:

BBC International, Inc.
 Cliff Brunson
 P.O. Box 805
 Hobbs NM, 88241
 Fax To: (575) 397-0397

Received:	09/13/2019	Sampling Date:	09/06/2019
Reported:	09/18/2019	Sampling Type:	Soil
Project Name:	IRIDIUM MDP1 28 21 6H	Sampling Condition:	Cool & Intact
Project Number:	(4/26/19)	Sample Received By:	Tamara Oldaker
Project Location:	OXY - EDDY CO NM		

Sample ID: SP 4 @ SURFACE (H903169-14)

BTEX 8021B		mg/kg		Analyzed By: BF						
Analyte	Result	Reporting Limit	Analyzed	Method Blank	BS	% Recovery	True Value QC	RPD	Qualifier	
Benzene*	<0.050	0.050	09/17/2019	ND	1.89	94.6	2.00	1.38		
Toluene*	<0.050	0.050	09/17/2019	ND	1.90	95.0	2.00	1.66		
Ethylbenzene*	<0.050	0.050	09/17/2019	ND	1.91	95.3	2.00	2.16		
Total Xylenes*	<0.150	0.150	09/17/2019	ND	5.67	94.5	6.00	1.34		
Total BTEX	<0.300	0.300	09/17/2019	ND						

Surrogate: 4-Bromofluorobenzene (PID) 74.3 % 73.3-129

Chloride, SM4500Cl-B		mg/kg		Analyzed By: AC						
Analyte	Result	Reporting Limit	Analyzed	Method Blank	BS	% Recovery	True Value QC	RPD	Qualifier	
Chloride	3920	16.0	09/16/2019	ND	416	104	400	0.00	QM-07	

TPH 8015M		mg/kg		Analyzed By: MS					
Analyte	Result	Reporting Limit	Analyzed	Method Blank	BS	% Recovery	True Value QC	RPD	Qualifier
GRO C6-C10*	<10.0	10.0	09/16/2019	ND	202	101	200	3.54	
DRO >C10-C28*	145	10.0	09/16/2019	ND	193	96.6	200	4.33	
EXT DRO >C28-C36	38.4	10.0	09/16/2019	ND					

Surrogate: 1-Chlorooctane 80.9 % 41-142

Surrogate: 1-Chlorooctadecane 97.4 % 37.6-147

Cardinal Laboratories

*=Accredited Analyte

PLEASE NOTE: Liability and Damages. Cardinal's liability and client's exclusive remedy for any claim arising, whether based in contract or tort, shall be limited to the amount paid by client for analyses. All claims, including those for negligence and any other cause whatsoever shall be deemed waived unless made in writing and received by Cardinal within thirty (30) days after completion of the applicable service. In no event shall Cardinal be liable for incidental or consequential damages, including, without limitation, business interruptions, loss of use, or loss of profits incurred by client, its subsidiaries, affiliates or successors arising out of or related to the performance of the services hereunder by Cardinal, regardless of whether such claim is based upon any of the above stated reasons or otherwise. Results relate only to the samples identified above. This report shall not be reproduced except in full with written approval of Cardinal Laboratories.

Celey D. Keene, Lab Director/Quality Manager



PHONE (575) 393-2326 ° 101 E. MARLAND ° HOBBS, NM 88240

Analytical Results For:

BBC International, Inc.
 Cliff Brunson
 P.O. Box 805
 Hobbs NM, 88241
 Fax To: (575) 397-0397

Received:	09/13/2019	Sampling Date:	09/06/2019
Reported:	09/18/2019	Sampling Type:	Soil
Project Name:	IRIDIUM MDP1 28 21 6H	Sampling Condition:	Cool & Intact
Project Number:	(4/26/19)	Sample Received By:	Tamara Oldaker
Project Location:	OXY - EDDY CO NM		

Sample ID: SP 4 @ 1' (H903169-15)

BTEX 8021B		mg/kg		Analyzed By: BF						
Analyte	Result	Reporting Limit	Analyzed	Method Blank	BS	% Recovery	True Value QC	RPD	Qualifier	
Benzene*	<0.050	0.050	09/17/2019	ND	1.89	94.6	2.00	1.38		
Toluene*	<0.050	0.050	09/17/2019	ND	1.90	95.0	2.00	1.66		
Ethylbenzene*	<0.050	0.050	09/17/2019	ND	1.91	95.3	2.00	2.16		
Total Xylenes*	<0.150	0.150	09/17/2019	ND	5.67	94.5	6.00	1.34		
Total BTEX	<0.300	0.300	09/17/2019	ND						

Surrogate: 4-Bromofluorobenzene (PID) 73.8 % 73.3-129

Chloride, SM4500Cl-B		mg/kg		Analyzed By: AC					
Analyte	Result	Reporting Limit	Analyzed	Method Blank	BS	% Recovery	True Value QC	RPD	Qualifier
Chloride	32.0	16.0	09/16/2019	ND	416	104	400	0.00	

TPH 8015M		mg/kg		Analyzed By: MS					
Analyte	Result	Reporting Limit	Analyzed	Method Blank	BS	% Recovery	True Value QC	RPD	Qualifier
GRO C6-C10*	<10.0	10.0	09/16/2019	ND	202	101	200	3.54	
DRO >C10-C28*	<10.0	10.0	09/16/2019	ND	193	96.6	200	4.33	
EXT DRO >C28-C36	<10.0	10.0	09/16/2019	ND					

Surrogate: 1-Chlorooctane 88.2 % 41-142

Surrogate: 1-Chlorooctadecane 94.6 % 37.6-147

Cardinal Laboratories

*=Accredited Analyte

PLEASE NOTE: Liability and Damages. Cardinal's liability and client's exclusive remedy for any claim arising, whether based in contract or tort, shall be limited to the amount paid by client for analyses. All claims, including those for negligence and any other cause whatsoever shall be deemed waived unless made in writing and received by Cardinal within thirty (30) days after completion of the applicable service. In no event shall Cardinal be liable for incidental or consequential damages, including, without limitation, business interruptions, loss of use, or loss of profits incurred by client, its subsidiaries, affiliates or successors arising out of or related to the performance of the services hereunder by Cardinal, regardless of whether such claim is based upon any of the above stated reasons or otherwise. Results relate only to the samples identified above. This report shall not be reproduced except in full with written approval of Cardinal Laboratories.

Celey D. Keene, Lab Director/Quality Manager



PHONE (575) 393-2326 ° 101 E. MARLAND ° HOBBS, NM 88240

Analytical Results For:

BBC International, Inc.
 Cliff Brunson
 P.O. Box 805
 Hobbs NM, 88241
 Fax To: (575) 397-0397

Received: 09/13/2019
 Reported: 09/18/2019
 Project Name: IRIDIUM MDP1 28 21 6H
 Project Number: (4/26/19)
 Project Location: OXY - EDDY CO NM

Sampling Date: 09/06/2019
 Sampling Type: Soil
 Sampling Condition: Cool & Intact
 Sample Received By: Tamara Oldaker

Sample ID: SP 4 @ 2' (H903169-16)

Chloride, SM4500Cl-B	mg/kg	Analyzed By: AC							
Analyte	Result	Reporting Limit	Analyzed	Method Blank	BS	% Recovery	True Value QC	RPD	Qualifier
Chloride	16.0	16.0	09/16/2019	ND	416	104	400	0.00	

Cardinal Laboratories

*=Accredited Analyte

PLEASE NOTE: Liability and Damages. Cardinal's liability and client's exclusive remedy for any claim arising, whether based in contract or tort, shall be limited to the amount paid by client for analyses. All claims, including those for negligence and any other cause whatsoever shall be deemed waived unless made in writing and received by Cardinal within thirty (30) days after completion of the applicable service. In no event shall Cardinal be liable for incidental or consequential damages, including, without limitation, business interruptions, loss of use, or loss of profits incurred by client, its subsidiaries, affiliates or successors arising out of or related to the performance of the services hereunder by Cardinal, regardless of whether such claim is based upon any of the above stated reasons or otherwise. Results relate only to the samples identified above. This report shall not be reproduced except in full with written approval of Cardinal Laboratories.

Celey D. Keene, Lab Director/Quality Manager



PHONE (575) 393-2326 ° 101 E. MARLAND ° HOBBS, NM 88240

Analytical Results For:

BBC International, Inc.
 Cliff Brunson
 P.O. Box 805
 Hobbs NM, 88241
 Fax To: (575) 397-0397

Received:	09/13/2019	Sampling Date:	09/06/2019
Reported:	09/18/2019	Sampling Type:	Soil
Project Name:	IRIDIUM MDP1 28 21 6H	Sampling Condition:	Cool & Intact
Project Number:	(4/26/19)	Sample Received By:	Tamara Oldaker
Project Location:	OXY - EDDY CO NM		

Sample ID: SP 5 @ SURFACE (H903169-17)

BTEX 8021B		mg/kg		Analyzed By: BF						
Analyte	Result	Reporting Limit	Analyzed	Method Blank	BS	% Recovery	True Value QC	RPD	Qualifier	
Benzene*	<0.050	0.050	09/17/2019	ND	1.89	94.6	2.00	1.38		
Toluene*	<0.050	0.050	09/17/2019	ND	1.90	95.0	2.00	1.66		
Ethylbenzene*	<0.050	0.050	09/17/2019	ND	1.91	95.3	2.00	2.16		
Total Xylenes*	<0.150	0.150	09/17/2019	ND	5.67	94.5	6.00	1.34		
Total BTEX	<0.300	0.300	09/17/2019	ND						

Surrogate: 4-Bromofluorobenzene (PID) 76.1 % 73.3-129

Chloride, SM4500Cl-B		mg/kg		Analyzed By: AC					
Analyte	Result	Reporting Limit	Analyzed	Method Blank	BS	% Recovery	True Value QC	RPD	Qualifier
Chloride	592	16.0	09/16/2019	ND	416	104	400	0.00	

TPH 8015M		mg/kg		Analyzed By: MS					
Analyte	Result	Reporting Limit	Analyzed	Method Blank	BS	% Recovery	True Value QC	RPD	Qualifier
GRO C6-C10*	<10.0	10.0	09/16/2019	ND	202	101	200	3.54	
DRO >C10-C28*	16.2	10.0	09/16/2019	ND	193	96.6	200	4.33	
EXT DRO >C28-C36	<10.0	10.0	09/16/2019	ND					

Surrogate: 1-Chlorooctane 71.4 % 41-142

Surrogate: 1-Chlorooctadecane 78.6 % 37.6-147

Cardinal Laboratories

*=Accredited Analyte

PLEASE NOTE: Liability and Damages. Cardinal's liability and client's exclusive remedy for any claim arising, whether based in contract or tort, shall be limited to the amount paid by client for analyses. All claims, including those for negligence and any other cause whatsoever shall be deemed waived unless made in writing and received by Cardinal within thirty (30) days after completion of the applicable service. In no event shall Cardinal be liable for incidental or consequential damages, including, without limitation, business interruptions, loss of use, or loss of profits incurred by client, its subsidiaries, affiliates or successors arising out of or related to the performance of the services hereunder by Cardinal, regardless of whether such claim is based upon any of the above stated reasons or otherwise. Results relate only to the samples identified above. This report shall not be reproduced except in full with written approval of Cardinal Laboratories.

Celey D. Keene, Lab Director/Quality Manager



PHONE (575) 393-2326 ° 101 E. MARLAND ° HOBBS, NM 88240

Analytical Results For:

BBC International, Inc.
 Cliff Brunson
 P.O. Box 805
 Hobbs NM, 88241
 Fax To: (575) 397-0397

Received:	09/13/2019	Sampling Date:	09/06/2019
Reported:	09/18/2019	Sampling Type:	Soil
Project Name:	IRIDIUM MDP1 28 21 6H	Sampling Condition:	Cool & Intact
Project Number:	(4/26/19)	Sample Received By:	Tamara Oldaker
Project Location:	OXY - EDDY CO NM		

Sample ID: SP 5 @ 1' (H903169-18)

BTEX 8021B		mg/kg		Analyzed By: BF						
Analyte	Result	Reporting Limit	Analyzed	Method Blank	BS	% Recovery	True Value QC	RPD	Qualifier	
Benzene*	<0.050	0.050	09/17/2019	ND	1.89	94.6	2.00	1.38		
Toluene*	<0.050	0.050	09/17/2019	ND	1.90	95.0	2.00	1.66		
Ethylbenzene*	<0.050	0.050	09/17/2019	ND	1.91	95.3	2.00	2.16		
Total Xylenes*	<0.150	0.150	09/17/2019	ND	5.67	94.5	6.00	1.34		
Total BTEX	<0.300	0.300	09/17/2019	ND						

Surrogate: 4-Bromofluorobenzene (PID) 78.0 % 73.3-129

Chloride, SM4500Cl-B		mg/kg		Analyzed By: AC					
Analyte	Result	Reporting Limit	Analyzed	Method Blank	BS	% Recovery	True Value QC	RPD	Qualifier
Chloride	16.0	16.0	09/16/2019	ND	416	104	400	0.00	

TPH 8015M		mg/kg		Analyzed By: MS					
Analyte	Result	Reporting Limit	Analyzed	Method Blank	BS	% Recovery	True Value QC	RPD	Qualifier
GRO C6-C10*	<10.0	10.0	09/16/2019	ND	202	101	200	3.54	
DRO >C10-C28*	<10.0	10.0	09/16/2019	ND	193	96.6	200	4.33	
EXT DRO >C28-C36	<10.0	10.0	09/16/2019	ND					

Surrogate: 1-Chlorooctane 88.2 % 41-142

Surrogate: 1-Chlorooctadecane 95.9 % 37.6-147

Cardinal Laboratories

*=Accredited Analyte

PLEASE NOTE: Liability and Damages. Cardinal's liability and client's exclusive remedy for any claim arising, whether based in contract or tort, shall be limited to the amount paid by client for analyses. All claims, including those for negligence and any other cause whatsoever shall be deemed waived unless made in writing and received by Cardinal within thirty (30) days after completion of the applicable service. In no event shall Cardinal be liable for incidental or consequential damages, including, without limitation, business interruptions, loss of use, or loss of profits incurred by client, its subsidiaries, affiliates or successors arising out of or related to the performance of the services hereunder by Cardinal, regardless of whether such claim is based upon any of the above stated reasons or otherwise. Results relate only to the samples identified above. This report shall not be reproduced except in full with written approval of Cardinal Laboratories.

Celey D. Keene, Lab Director/Quality Manager



PHONE (575) 393-2326 ° 101 E. MARLAND ° HOBBS, NM 88240

Analytical Results For:

BBC International, Inc.
 Cliff Brunson
 P.O. Box 805
 Hobbs NM, 88241
 Fax To: (575) 397-0397

Received:	09/13/2019	Sampling Date:	09/06/2019
Reported:	09/18/2019	Sampling Type:	Soil
Project Name:	IRIDIUM MDP1 28 21 6H	Sampling Condition:	Cool & Intact
Project Number:	(4/26/19)	Sample Received By:	Tamara Oldaker
Project Location:	OXY - EDDY CO NM		

Sample ID: SP 5 @ 2' (H903169-19)

Chloride, SM4500Cl-B		mg/kg		Analyzed By: AC						
Analyte	Result	Reporting Limit	Analyzed	Method Blank	BS	% Recovery	True Value QC	RPD	Qualifier	
Chloride	<16.0	16.0	09/16/2019	ND	416	104	400	0.00		

Cardinal Laboratories

*=Accredited Analyte

PLEASE NOTE: Liability and Damages. Cardinal's liability and client's exclusive remedy for any claim arising, whether based in contract or tort, shall be limited to the amount paid by client for analyses. All claims, including those for negligence and any other cause whatsoever shall be deemed waived unless made in writing and received by Cardinal within thirty (30) days after completion of the applicable service. In no event shall Cardinal be liable for incidental or consequential damages, including, without limitation, business interruptions, loss of use, or loss of profits incurred by client, its subsidiaries, affiliates or successors arising out of or related to the performance of the services hereunder by Cardinal, regardless of whether such claim is based upon any of the above stated reasons or otherwise. Results relate only to the samples identified above. This report shall not be reproduced except in full with written approval of Cardinal Laboratories.

Celey D. Keene, Lab Director/Quality Manager



PHONE (575) 393-2326 ° 101 E. MARLAND ° HOBBS, NM 88240

Analytical Results For:

BBC International, Inc.
 Cliff Brunson
 P.O. Box 805
 Hobbs NM, 88241
 Fax To: (575) 397-0397

Received:	09/13/2019	Sampling Date:	09/06/2019
Reported:	09/18/2019	Sampling Type:	Soil
Project Name:	IRIDIUM MDP1 28 21 6H	Sampling Condition:	Cool & Intact
Project Number:	(4/26/19)	Sample Received By:	Tamara Oldaker
Project Location:	OXY - EDDY CO NM		

Sample ID: SP 6 @ SURFACE (H903169-20)

BTEX 8021B		mg/kg		Analyzed By: BF						
Analyte	Result	Reporting Limit	Analyzed	Method Blank	BS	% Recovery	True Value QC	RPD	Qualifier	
Benzene*	<0.050	0.050	09/17/2019	ND	1.89	94.6	2.00	1.38		
Toluene*	<0.050	0.050	09/17/2019	ND	1.90	95.0	2.00	1.66		
Ethylbenzene*	<0.050	0.050	09/17/2019	ND	1.91	95.3	2.00	2.16		
Total Xylenes*	<0.150	0.150	09/17/2019	ND	5.67	94.5	6.00	1.34		
Total BTEX	<0.300	0.300	09/17/2019	ND						

Surrogate: 4-Bromofluorobenzene (PID) 78.9 % 73.3-129

Chloride, SM4500Cl-B		mg/kg		Analyzed By: AC					
Analyte	Result	Reporting Limit	Analyzed	Method Blank	BS	% Recovery	True Value QC	RPD	Qualifier
Chloride	3320	16.0	09/16/2019	ND	416	104	400	0.00	

TPH 8015M		mg/kg		Analyzed By: MS					
Analyte	Result	Reporting Limit	Analyzed	Method Blank	BS	% Recovery	True Value QC	RPD	Qualifier
GRO C6-C10*	<10.0	10.0	09/16/2019	ND	202	101	200	3.54	
DRO >C10-C28*	151	10.0	09/16/2019	ND	193	96.6	200	4.33	
EXT DRO >C28-C36	42.4	10.0	09/16/2019	ND					

Surrogate: 1-Chlorooctane 72.8 % 41-142

Surrogate: 1-Chlorooctadecane 92.5 % 37.6-147

Cardinal Laboratories

*=Accredited Analyte

PLEASE NOTE: Liability and Damages. Cardinal's liability and client's exclusive remedy for any claim arising, whether based in contract or tort, shall be limited to the amount paid by client for analyses. All claims, including those for negligence and any other cause whatsoever shall be deemed waived unless made in writing and received by Cardinal within thirty (30) days after completion of the applicable service. In no event shall Cardinal be liable for incidental or consequential damages, including, without limitation, business interruptions, loss of use, or loss of profits incurred by client, its subsidiaries, affiliates or successors arising out of or related to the performance of the services hereunder by Cardinal, regardless of whether such claim is based upon any of the above stated reasons or otherwise. Results relate only to the samples identified above. This report shall not be reproduced except in full with written approval of Cardinal Laboratories.

Celey D. Keene, Lab Director/Quality Manager



PHONE (575) 393-2326 ° 101 E. MARLAND ° HOBBS, NM 88240

Analytical Results For:

BBC International, Inc.
 Cliff Brunson
 P.O. Box 805
 Hobbs NM, 88241
 Fax To: (575) 397-0397

Received:	09/13/2019	Sampling Date:	09/06/2019
Reported:	09/18/2019	Sampling Type:	Soil
Project Name:	IRIDIUM MDP1 28 21 6H	Sampling Condition:	Cool & Intact
Project Number:	(4/26/19)	Sample Received By:	Tamara Oldaker
Project Location:	OXY - EDDY CO NM		

Sample ID: SP 6 @ 1' (H903169-21)

BTEX 8021B		mg/kg		Analyzed By: BF						
Analyte	Result	Reporting Limit	Analyzed	Method Blank	BS	% Recovery	True Value QC	RPD	Qualifier	
Benzene*	<0.050	0.050	09/17/2019	ND	1.89	94.6	2.00	1.38		
Toluene*	<0.050	0.050	09/17/2019	ND	1.90	95.0	2.00	1.66		
Ethylbenzene*	<0.050	0.050	09/17/2019	ND	1.91	95.3	2.00	2.16		
Total Xylenes*	<0.150	0.150	09/17/2019	ND	5.67	94.5	6.00	1.34		
Total BTEX	<0.300	0.300	09/17/2019	ND						

Surrogate: 4-Bromofluorobenzene (PID) 74.4 % 73.3-129

Chloride, SM4500Cl-B		mg/kg		Analyzed By: AC						
Analyte	Result	Reporting Limit	Analyzed	Method Blank	BS	% Recovery	True Value QC	RPD	Qualifier	
Chloride	<16.0	16.0	09/16/2019	ND	416	104	400	0.00		

TPH 8015M		mg/kg		Analyzed By: MS					
Analyte	Result	Reporting Limit	Analyzed	Method Blank	BS	% Recovery	True Value QC	RPD	Qualifier
GRO C6-C10*	<10.0	10.0	09/16/2019	ND	202	101	200	3.54	
DRO >C10-C28*	<10.0	10.0	09/16/2019	ND	193	96.6	200	4.33	
EXT DRO >C28-C36	<10.0	10.0	09/16/2019	ND					

Surrogate: 1-Chlorooctane 86.9 % 41-142

Surrogate: 1-Chlorooctadecane 94.5 % 37.6-147

Cardinal Laboratories

*=Accredited Analyte

PLEASE NOTE: Liability and Damages. Cardinal's liability and client's exclusive remedy for any claim arising, whether based in contract or tort, shall be limited to the amount paid by client for analyses. All claims, including those for negligence and any other cause whatsoever shall be deemed waived unless made in writing and received by Cardinal within thirty (30) days after completion of the applicable service. In no event shall Cardinal be liable for incidental or consequential damages, including, without limitation, business interruptions, loss of use, or loss of profits incurred by client, its subsidiaries, affiliates or successors arising out of or related to the performance of the services hereunder by Cardinal, regardless of whether such claim is based upon any of the above stated reasons or otherwise. Results relate only to the samples identified above. This report shall not be reproduced except in full with written approval of Cardinal Laboratories.

Celey D. Keene, Lab Director/Quality Manager



PHONE (575) 393-2326 ° 101 E. MARLAND ° HOBBS, NM 88240

Analytical Results For:

BBC International, Inc.
 Cliff Brunson
 P.O. Box 805
 Hobbs NM, 88241
 Fax To: (575) 397-0397

Received:	09/13/2019	Sampling Date:	09/06/2019
Reported:	09/18/2019	Sampling Type:	Soil
Project Name:	IRIDIUM MDP1 28 21 6H	Sampling Condition:	Cool & Intact
Project Number:	(4/26/19)	Sample Received By:	Tamara Oldaker
Project Location:	OXY - EDDY CO NM		

Sample ID: SP 6 @ 2' (H903169-22)

Chloride, SM4500Cl-B		mg/kg		Analyzed By: AC						
Analyte	Result	Reporting Limit	Analyzed	Method Blank	BS	% Recovery	True Value QC	RPD	Qualifier	
Chloride	<16.0	16.0	09/16/2019	ND	416	104	400	0.00		

Cardinal Laboratories

*=Accredited Analyte

PLEASE NOTE: Liability and Damages. Cardinal's liability and client's exclusive remedy for any claim arising, whether based in contract or tort, shall be limited to the amount paid by client for analyses. All claims, including those for negligence and any other cause whatsoever shall be deemed waived unless made in writing and received by Cardinal within thirty (30) days after completion of the applicable service. In no event shall Cardinal be liable for incidental or consequential damages, including, without limitation, business interruptions, loss of use, or loss of profits incurred by client, its subsidiaries, affiliates or successors arising out of or related to the performance of the services hereunder by Cardinal, regardless of whether such claim is based upon any of the above stated reasons or otherwise. Results relate only to the samples identified above. This report shall not be reproduced except in full with written approval of Cardinal Laboratories.

Celey D. Keene, Lab Director/Quality Manager



PHONE (575) 393-2326 ° 101 E. MARLAND ° HOBBS, NM 88240

Analytical Results For:

BBC International, Inc.
 Cliff Brunson
 P.O. Box 805
 Hobbs NM, 88241
 Fax To: (575) 397-0397

Received:	09/13/2019	Sampling Date:	09/06/2019
Reported:	09/18/2019	Sampling Type:	Soil
Project Name:	IRIDIUM MDP1 28 21 6H	Sampling Condition:	Cool & Intact
Project Number:	(4/26/19)	Sample Received By:	Tamara Oldaker
Project Location:	OXY - EDDY CO NM		

Sample ID: SP 7 @ SURFACE (H903169-23)

BTEX 8021B		mg/kg		Analyzed By: BF						
Analyte	Result	Reporting Limit	Analyzed	Method Blank	BS	% Recovery	True Value QC	RPD	Qualifier	
Benzene*	<0.050	0.050	09/17/2019	ND	1.89	94.6	2.00	1.38		
Toluene*	<0.050	0.050	09/17/2019	ND	1.90	95.0	2.00	1.66		
Ethylbenzene*	<0.050	0.050	09/17/2019	ND	1.91	95.3	2.00	2.16		
Total Xylenes*	<0.150	0.150	09/17/2019	ND	5.67	94.5	6.00	1.34		
Total BTEX	<0.300	0.300	09/17/2019	ND						

Surrogate: 4-Bromofluorobenzene (PID) 74.2 % 73.3-129

Chloride, SM4500Cl-B		mg/kg		Analyzed By: AC					
Analyte	Result	Reporting Limit	Analyzed	Method Blank	BS	% Recovery	True Value QC	RPD	Qualifier
Chloride	3600	16.0	09/16/2019	ND	416	104	400	0.00	

TPH 8015M		mg/kg		Analyzed By: MS					
Analyte	Result	Reporting Limit	Analyzed	Method Blank	BS	% Recovery	True Value QC	RPD	Qualifier
GRO C6-C10*	<10.0	10.0	09/16/2019	ND	202	101	200	3.54	
DRO >C10-C28*	46.6	10.0	09/16/2019	ND	193	96.6	200	4.33	
EXT DRO >C28-C36	<10.0	10.0	09/16/2019	ND					

Surrogate: 1-Chlorooctane 75.1 % 41-142

Surrogate: 1-Chlorooctadecane 90.8 % 37.6-147

Cardinal Laboratories

*=Accredited Analyte

PLEASE NOTE: Liability and Damages. Cardinal's liability and client's exclusive remedy for any claim arising, whether based in contract or tort, shall be limited to the amount paid by client for analyses. All claims, including those for negligence and any other cause whatsoever shall be deemed waived unless made in writing and received by Cardinal within thirty (30) days after completion of the applicable service. In no event shall Cardinal be liable for incidental or consequential damages, including, without limitation, business interruptions, loss of use, or loss of profits incurred by client, its subsidiaries, affiliates or successors arising out of or related to the performance of the services hereunder by Cardinal, regardless of whether such claim is based upon any of the above stated reasons or otherwise. Results relate only to the samples identified above. This report shall not be reproduced except in full with written approval of Cardinal Laboratories.

Celey D. Keene, Lab Director/Quality Manager



PHONE (575) 393-2326 ° 101 E. MARLAND ° HOBBS, NM 88240

Analytical Results For:

BBC International, Inc.
 Cliff Brunson
 P.O. Box 805
 Hobbs NM, 88241
 Fax To: (575) 397-0397

Received:	09/13/2019	Sampling Date:	09/06/2019
Reported:	09/18/2019	Sampling Type:	Soil
Project Name:	IRIDIUM MDP1 28 21 6H	Sampling Condition:	Cool & Intact
Project Number:	(4/26/19)	Sample Received By:	Tamara Oldaker
Project Location:	OXY - EDDY CO NM		

Sample ID: SP 7 @ 1' (H903169-24)

BTEX 8021B		mg/kg	Analyzed By: BF						
Analyte	Result	Reporting Limit	Analyzed	Method Blank	BS	% Recovery	True Value QC	RPD	Qualifier
Benzene*	<0.050	0.050	09/17/2019	ND	1.89	94.6	2.00	1.38	
Toluene*	<0.050	0.050	09/17/2019	ND	1.90	95.0	2.00	1.66	
Ethylbenzene*	<0.050	0.050	09/17/2019	ND	1.91	95.3	2.00	2.16	
Total Xylenes*	<0.150	0.150	09/17/2019	ND	5.67	94.5	6.00	1.34	
Total BTEX	<0.300	0.300	09/17/2019	ND					

Surrogate: 4-Bromofluorobenzene (PID) 78.3 % 73.3-129

Chloride, SM4500Cl-B		mg/kg	Analyzed By: AC						
Analyte	Result	Reporting Limit	Analyzed	Method Blank	BS	% Recovery	True Value QC	RPD	Qualifier
Chloride	<16.0	16.0	09/16/2019	ND	416	104	400	0.00	

TPH 8015M		mg/kg	Analyzed By: MS						
Analyte	Result	Reporting Limit	Analyzed	Method Blank	BS	% Recovery	True Value QC	RPD	Qualifier
GRO C6-C10*	<10.0	10.0	09/16/2019	ND	216	108	200	4.15	
DRO >C10-C28*	<10.0	10.0	09/16/2019	ND	225	112	200	7.95	
EXT DRO >C28-C36	<10.0	10.0	09/16/2019	ND					

Surrogate: 1-Chlorooctane 90.6 % 41-142

Surrogate: 1-Chlorooctadecane 99.0 % 37.6-147

Cardinal Laboratories

*=Accredited Analyte

PLEASE NOTE: Liability and Damages. Cardinal's liability and client's exclusive remedy for any claim arising, whether based in contract or tort, shall be limited to the amount paid by client for analyses. All claims, including those for negligence and any other cause whatsoever shall be deemed waived unless made in writing and received by Cardinal within thirty (30) days after completion of the applicable service. In no event shall Cardinal be liable for incidental or consequential damages, including, without limitation, business interruptions, loss of use, or loss of profits incurred by client, its subsidiaries, affiliates or successors arising out of or related to the performance of the services hereunder by Cardinal, regardless of whether such claim is based upon any of the above stated reasons or otherwise. Results relate only to the samples identified above. This report shall not be reproduced except in full with written approval of Cardinal Laboratories.

Celey D. Keene, Lab Director/Quality Manager



PHONE (575) 393-2326 ° 101 E. MARLAND ° HOBBS, NM 88240

Analytical Results For:

BBC International, Inc.
 Cliff Brunson
 P.O. Box 805
 Hobbs NM, 88241
 Fax To: (575) 397-0397

Received: 09/13/2019
 Reported: 09/18/2019
 Project Name: IRIDIUM MDP1 28 21 6H
 Project Number: (4/26/19)
 Project Location: OXY - EDDY CO NM

Sampling Date: 09/06/2019
 Sampling Type: Soil
 Sampling Condition: Cool & Intact
 Sample Received By: Tamara Oldaker

Sample ID: SP 7 @ 2' (H903169-25)

Chloride, SM4500Cl-B		mg/kg		Analyzed By: AC						
Analyte	Result	Reporting Limit	Analyzed	Method Blank	BS	% Recovery	True Value QC	RPD	Qualifier	
Chloride	<16.0	16.0	09/16/2019	ND	416	104	400	0.00		

Cardinal Laboratories

*=Accredited Analyte

PLEASE NOTE: Liability and Damages. Cardinal's liability and client's exclusive remedy for any claim arising, whether based in contract or tort, shall be limited to the amount paid by client for analyses. All claims, including those for negligence and any other cause whatsoever shall be deemed waived unless made in writing and received by Cardinal within thirty (30) days after completion of the applicable service. In no event shall Cardinal be liable for incidental or consequential damages, including, without limitation, business interruptions, loss of use, or loss of profits incurred by client, its subsidiaries, affiliates or successors arising out of or related to the performance of the services hereunder by Cardinal, regardless of whether such claim is based upon any of the above stated reasons or otherwise. Results relate only to the samples identified above. This report shall not be reproduced except in full with written approval of Cardinal Laboratories.

Celey D. Keene, Lab Director/Quality Manager



PHONE (575) 393-2326 ° 101 E. MARLAND ° HOBBS, NM 88240

Analytical Results For:

BBC International, Inc.
 Cliff Brunson
 P.O. Box 805
 Hobbs NM, 88241
 Fax To: (575) 397-0397

Received:	09/13/2019	Sampling Date:	09/06/2019
Reported:	09/18/2019	Sampling Type:	Soil
Project Name:	IRIDIUM MDP1 28 21 6H	Sampling Condition:	Cool & Intact
Project Number:	(4/26/19)	Sample Received By:	Tamara Oldaker
Project Location:	OXY - EDDY CO NM		

Sample ID: SP 8 @ SURFACE (H903169-26)

BTEX 8021B		mg/kg		Analyzed By: BF						
Analyte	Result	Reporting Limit	Analyzed	Method Blank	BS	% Recovery	True Value QC	RPD	Qualifier	
Benzene*	<0.050	0.050	09/17/2019	ND	1.89	94.6	2.00	1.38		
Toluene*	<0.050	0.050	09/17/2019	ND	1.90	95.0	2.00	1.66		
Ethylbenzene*	<0.050	0.050	09/17/2019	ND	1.91	95.3	2.00	2.16		
Total Xylenes*	<0.150	0.150	09/17/2019	ND	5.67	94.5	6.00	1.34		
Total BTEX	<0.300	0.300	09/17/2019	ND						

Surrogate: 4-Bromofluorobenzene (PID) 76.6 % 73.3-129

Chloride, SM4500Cl-B		mg/kg		Analyzed By: AC					
Analyte	Result	Reporting Limit	Analyzed	Method Blank	BS	% Recovery	True Value QC	RPD	Qualifier
Chloride	2920	16.0	09/16/2019	ND	416	104	400	0.00	

TPH 8015M		mg/kg		Analyzed By: MS					
Analyte	Result	Reporting Limit	Analyzed	Method Blank	BS	% Recovery	True Value QC	RPD	Qualifier
GRO C6-C10*	<10.0	10.0	09/16/2019	ND	216	108	200	4.15	
DRO >C10-C28*	229	10.0	09/16/2019	ND	225	112	200	7.95	
EXT DRO >C28-C36	15.9	10.0	09/16/2019	ND					

Surrogate: 1-Chlorooctane 88.0 % 41-142

Surrogate: 1-Chlorooctadecane 104 % 37.6-147

Cardinal Laboratories

*=Accredited Analyte

PLEASE NOTE: Liability and Damages. Cardinal's liability and client's exclusive remedy for any claim arising, whether based in contract or tort, shall be limited to the amount paid by client for analyses. All claims, including those for negligence and any other cause whatsoever shall be deemed waived unless made in writing and received by Cardinal within thirty (30) days after completion of the applicable service. In no event shall Cardinal be liable for incidental or consequential damages, including, without limitation, business interruptions, loss of use, or loss of profits incurred by client, its subsidiaries, affiliates or successors arising out of or related to the performance of the services hereunder by Cardinal, regardless of whether such claim is based upon any of the above stated reasons or otherwise. Results relate only to the samples identified above. This report shall not be reproduced except in full with written approval of Cardinal Laboratories.

Celey D. Keene, Lab Director/Quality Manager



PHONE (575) 393-2326 ° 101 E. MARLAND ° HOBBS, NM 88240

Analytical Results For:

BBC International, Inc.
 Cliff Brunson
 P.O. Box 805
 Hobbs NM, 88241
 Fax To: (575) 397-0397

Received:	09/13/2019	Sampling Date:	09/09/2019
Reported:	09/18/2019	Sampling Type:	Soil
Project Name:	IRIDIUM MDP1 28 21 6H	Sampling Condition:	Cool & Intact
Project Number:	(4/26/19)	Sample Received By:	Tamara Oldaker
Project Location:	OXY - EDDY CO NM		

Sample ID: SP 8 @ 1' (H903169-27)

BTEX 8021B		mg/kg		Analyzed By: BF						
Analyte	Result	Reporting Limit	Analyzed	Method Blank	BS	% Recovery	True Value QC	RPD	Qualifier	
Benzene*	<0.050	0.050	09/17/2019	ND	1.89	94.6	2.00	1.38		
Toluene*	<0.050	0.050	09/17/2019	ND	1.90	95.0	2.00	1.66		
Ethylbenzene*	<0.050	0.050	09/17/2019	ND	1.91	95.3	2.00	2.16		
Total Xylenes*	<0.150	0.150	09/17/2019	ND	5.67	94.5	6.00	1.34		
Total BTEX	<0.300	0.300	09/17/2019	ND						

Surrogate: 4-Bromofluorobenzene (PID) 76.4 % 73.3-129

Chloride, SM4500Cl-B		mg/kg		Analyzed By: AC					
Analyte	Result	Reporting Limit	Analyzed	Method Blank	BS	% Recovery	True Value QC	RPD	Qualifier
Chloride	32.0	16.0	09/16/2019	ND	416	104	400	0.00	

TPH 8015M		mg/kg		Analyzed By: MS					
Analyte	Result	Reporting Limit	Analyzed	Method Blank	BS	% Recovery	True Value QC	RPD	Qualifier
GRO C6-C10*	<10.0	10.0	09/16/2019	ND	216	108	200	4.15	
DRO >C10-C28*	<10.0	10.0	09/16/2019	ND	225	112	200	7.95	
EXT DRO >C28-C36	<10.0	10.0	09/16/2019	ND					

Surrogate: 1-Chlorooctane 89.4 % 41-142

Surrogate: 1-Chlorooctadecane 96.8 % 37.6-147

Cardinal Laboratories

*=Accredited Analyte

PLEASE NOTE: Liability and Damages. Cardinal's liability and client's exclusive remedy for any claim arising, whether based in contract or tort, shall be limited to the amount paid by client for analyses. All claims, including those for negligence and any other cause whatsoever shall be deemed waived unless made in writing and received by Cardinal within thirty (30) days after completion of the applicable service. In no event shall Cardinal be liable for incidental or consequential damages, including, without limitation, business interruptions, loss of use, or loss of profits incurred by client, its subsidiaries, affiliates or successors arising out of or related to the performance of the services hereunder by Cardinal, regardless of whether such claim is based upon any of the above stated reasons or otherwise. Results relate only to the samples identified above. This report shall not be reproduced except in full with written approval of Cardinal Laboratories.

Celey D. Keene, Lab Director/Quality Manager



PHONE (575) 393-2326 ° 101 E. MARLAND ° HOBBS, NM 88240

Analytical Results For:

BBC International, Inc.
 Cliff Brunson
 P.O. Box 805
 Hobbs NM, 88241
 Fax To: (575) 397-0397

Received: 09/13/2019
 Reported: 09/18/2019
 Project Name: IRIDIUM MDP1 28 21 6H
 Project Number: (4/26/19)
 Project Location: OXY - EDDY CO NM

Sampling Date: 09/09/2019
 Sampling Type: Soil
 Sampling Condition: Cool & Intact
 Sample Received By: Tamara Oldaker

Sample ID: SP 8 @ 2' (H903169-28)

Chloride, SM4500Cl-B		mg/kg		Analyzed By: AC						
Analyte	Result	Reporting Limit	Analyzed	Method Blank	BS	% Recovery	True Value QC	RPD	Qualifier	
Chloride	<16.0	16.0	09/16/2019	ND	416	104	400	0.00		

Cardinal Laboratories

*=Accredited Analyte

PLEASE NOTE: Liability and Damages. Cardinal's liability and client's exclusive remedy for any claim arising, whether based in contract or tort, shall be limited to the amount paid by client for analyses. All claims, including those for negligence and any other cause whatsoever shall be deemed waived unless made in writing and received by Cardinal within thirty (30) days after completion of the applicable service. In no event shall Cardinal be liable for incidental or consequential damages, including, without limitation, business interruptions, loss of use, or loss of profits incurred by client, its subsidiaries, affiliates or successors arising out of or related to the performance of the services hereunder by Cardinal, regardless of whether such claim is based upon any of the above stated reasons or otherwise. Results relate only to the samples identified above. This report shall not be reproduced except in full with written approval of Cardinal Laboratories.

Celey D. Keene, Lab Director/Quality Manager



PHONE (575) 393-2326 ° 101 E. MARLAND ° HOBBS, NM 88240

Analytical Results For:

BBC International, Inc.
 Cliff Brunson
 P.O. Box 805
 Hobbs NM, 88241
 Fax To: (575) 397-0397

Received:	09/13/2019	Sampling Date:	09/09/2019
Reported:	09/18/2019	Sampling Type:	Soil
Project Name:	IRIDIUM MDP1 28 21 6H	Sampling Condition:	Cool & Intact
Project Number:	(4/26/19)	Sample Received By:	Tamara Oldaker
Project Location:	OXY - EDDY CO NM		

Sample ID: SP 9 @ SURFACE (H903169-29)

BTEX 8021B		mg/kg		Analyzed By: BF						
Analyte	Result	Reporting Limit	Analyzed	Method Blank	BS	% Recovery	True Value QC	RPD	Qualifier	
Benzene*	<0.050	0.050	09/17/2019	ND	1.89	94.6	2.00	1.38		
Toluene*	<0.050	0.050	09/17/2019	ND	1.90	95.0	2.00	1.66		
Ethylbenzene*	<0.050	0.050	09/17/2019	ND	1.91	95.3	2.00	2.16		
Total Xylenes*	<0.150	0.150	09/17/2019	ND	5.67	94.5	6.00	1.34		
Total BTEX	<0.300	0.300	09/17/2019	ND						

Surrogate: 4-Bromofluorobenzene (PID) 78.1 % 73.3-129

Chloride, SM4500Cl-B		mg/kg		Analyzed By: AC					
Analyte	Result	Reporting Limit	Analyzed	Method Blank	BS	% Recovery	True Value QC	RPD	Qualifier
Chloride	3960	16.0	09/16/2019	ND	416	104	400	0.00	

TPH 8015M		mg/kg		Analyzed By: MS					
Analyte	Result	Reporting Limit	Analyzed	Method Blank	BS	% Recovery	True Value QC	RPD	Qualifier
GRO C6-C10*	<10.0	10.0	09/16/2019	ND	216	108	200	4.15	
DRO >C10-C28*	29.1	10.0	09/16/2019	ND	225	112	200	7.95	
EXT DRO >C28-C36	<10.0	10.0	09/16/2019	ND					

Surrogate: 1-Chlorooctane 86.3 % 41-142

Surrogate: 1-Chlorooctadecane 97.7 % 37.6-147

Cardinal Laboratories

*=Accredited Analyte

PLEASE NOTE: Liability and Damages. Cardinal's liability and client's exclusive remedy for any claim arising, whether based in contract or tort, shall be limited to the amount paid by client for analyses. All claims, including those for negligence and any other cause whatsoever shall be deemed waived unless made in writing and received by Cardinal within thirty (30) days after completion of the applicable service. In no event shall Cardinal be liable for incidental or consequential damages, including, without limitation, business interruptions, loss of use, or loss of profits incurred by client, its subsidiaries, affiliates or successors arising out of or related to the performance of the services hereunder by Cardinal, regardless of whether such claim is based upon any of the above stated reasons or otherwise. Results relate only to the samples identified above. This report shall not be reproduced except in full with written approval of Cardinal Laboratories.

Celey D. Keene, Lab Director/Quality Manager



PHONE (575) 393-2326 ° 101 E. MARLAND ° HOBBS, NM 88240

Analytical Results For:

BBC International, Inc.
 Cliff Brunson
 P.O. Box 805
 Hobbs NM, 88241
 Fax To: (575) 397-0397

Received:	09/13/2019	Sampling Date:	09/09/2019
Reported:	09/18/2019	Sampling Type:	Soil
Project Name:	IRIDIUM MDP1 28 21 6H	Sampling Condition:	Cool & Intact
Project Number:	(4/26/19)	Sample Received By:	Tamara Oldaker
Project Location:	OXY - EDDY CO NM		

Sample ID: SP 9 @ 1' (H903169-30)

BTEX 8021B		mg/kg		Analyzed By: BF						
Analyte	Result	Reporting Limit	Analyzed	Method Blank	BS	% Recovery	True Value QC	RPD	Qualifier	
Benzene*	<0.050	0.050	09/17/2019	ND	1.89	94.6	2.00	1.38		
Toluene*	<0.050	0.050	09/17/2019	ND	1.90	95.0	2.00	1.66		
Ethylbenzene*	<0.050	0.050	09/17/2019	ND	1.91	95.3	2.00	2.16		
Total Xylenes*	<0.150	0.150	09/17/2019	ND	5.67	94.5	6.00	1.34		
Total BTEX	<0.300	0.300	09/17/2019	ND						

Surrogate: 4-Bromofluorobenzene (PID) 75.5 % 73.3-129

Chloride, SM4500Cl-B		mg/kg		Analyzed By: AC					
Analyte	Result	Reporting Limit	Analyzed	Method Blank	BS	% Recovery	True Value QC	RPD	Qualifier
Chloride	16.0	16.0	09/16/2019	ND	416	104	400	0.00	

TPH 8015M		mg/kg		Analyzed By: MS					
Analyte	Result	Reporting Limit	Analyzed	Method Blank	BS	% Recovery	True Value QC	RPD	Qualifier
GRO C6-C10*	<10.0	10.0	09/16/2019	ND	216	108	200	4.15	
DRO >C10-C28*	<10.0	10.0	09/16/2019	ND	225	112	200	7.95	
EXT DRO >C28-C36	<10.0	10.0	09/16/2019	ND					

Surrogate: 1-Chlorooctane 90.2 % 41-142

Surrogate: 1-Chlorooctadecane 98.7 % 37.6-147

Cardinal Laboratories

*=Accredited Analyte

PLEASE NOTE: Liability and Damages. Cardinal's liability and client's exclusive remedy for any claim arising, whether based in contract or tort, shall be limited to the amount paid by client for analyses. All claims, including those for negligence and any other cause whatsoever shall be deemed waived unless made in writing and received by Cardinal within thirty (30) days after completion of the applicable service. In no event shall Cardinal be liable for incidental or consequential damages, including, without limitation, business interruptions, loss of use, or loss of profits incurred by client, its subsidiaries, affiliates or successors arising out of or related to the performance of the services hereunder by Cardinal, regardless of whether such claim is based upon any of the above stated reasons or otherwise. Results relate only to the samples identified above. This report shall not be reproduced except in full with written approval of Cardinal Laboratories.

Celey D. Keene, Lab Director/Quality Manager



PHONE (575) 393-2326 ° 101 E. MARLAND ° HOBBS, NM 88240

Analytical Results For:

BBC International, Inc.
 Cliff Brunson
 P.O. Box 805
 Hobbs NM, 88241
 Fax To: (575) 397-0397

Received: 09/13/2019
 Reported: 09/18/2019
 Project Name: IRIDIUM MDP1 28 21 6H
 Project Number: (4/26/19)
 Project Location: OXY - EDDY CO NM

Sampling Date: 09/09/2019
 Sampling Type: Soil
 Sampling Condition: Cool & Intact
 Sample Received By: Tamara Oldaker

Sample ID: SP 9 @ 2' (H903169-31)

Chloride, SM4500Cl-B	mg/kg	Analyzed By: AC							
Analyte	Result	Reporting Limit	Analyzed	Method Blank	BS	% Recovery	True Value QC	RPD	Qualifier
Chloride	16.0	16.0	09/16/2019	ND	416	104	400	0.00	

Cardinal Laboratories

*=Accredited Analyte

PLEASE NOTE: Liability and Damages. Cardinal's liability and client's exclusive remedy for any claim arising, whether based in contract or tort, shall be limited to the amount paid by client for analyses. All claims, including those for negligence and any other cause whatsoever shall be deemed waived unless made in writing and received by Cardinal within thirty (30) days after completion of the applicable service. In no event shall Cardinal be liable for incidental or consequential damages, including, without limitation, business interruptions, loss of use, or loss of profits incurred by client, its subsidiaries, affiliates or successors arising out of or related to the performance of the services hereunder by Cardinal, regardless of whether such claim is based upon any of the above stated reasons or otherwise. Results relate only to the samples identified above. This report shall not be reproduced except in full with written approval of Cardinal Laboratories.

Celey D. Keene, Lab Director/Quality Manager



PHONE (575) 393-2326 ° 101 E. MARLAND ° HOBBS, NM 88240

Analytical Results For:

BBC International, Inc.
 Cliff Brunson
 P.O. Box 805
 Hobbs NM, 88241
 Fax To: (575) 397-0397

Received:	09/13/2019	Sampling Date:	09/09/2019
Reported:	09/18/2019	Sampling Type:	Soil
Project Name:	IRIDIUM MDP1 28 21 6H	Sampling Condition:	Cool & Intact
Project Number:	(4/26/19)	Sample Received By:	Tamara Oldaker
Project Location:	OXY - EDDY CO NM		

Sample ID: SP 10 @ SURFACE (H903169-32)

BTEX 8021B		mg/kg		Analyzed By: BF						
Analyte	Result	Reporting Limit	Analyzed	Method Blank	BS	% Recovery	True Value QC	RPD	Qualifier	
Benzene*	<0.050	0.050	09/17/2019	ND	1.89	94.6	2.00	1.38		
Toluene*	<0.050	0.050	09/17/2019	ND	1.90	95.0	2.00	1.66		
Ethylbenzene*	<0.050	0.050	09/17/2019	ND	1.91	95.3	2.00	2.16		
Total Xylenes*	<0.150	0.150	09/17/2019	ND	5.67	94.5	6.00	1.34		
Total BTEX	<0.300	0.300	09/17/2019	ND						

Surrogate: 4-Bromofluorobenzene (PID) 76.0 % 73.3-129

Chloride, SM4500Cl-B		mg/kg		Analyzed By: AC					
Analyte	Result	Reporting Limit	Analyzed	Method Blank	BS	% Recovery	True Value QC	RPD	Qualifier
Chloride	432	16.0	09/16/2019	ND	416	104	400	0.00	

TPH 8015M		mg/kg		Analyzed By: MS					
Analyte	Result	Reporting Limit	Analyzed	Method Blank	BS	% Recovery	True Value QC	RPD	Qualifier
GRO C6-C10*	<10.0	10.0	09/16/2019	ND	216	108	200	4.15	
DRO >C10-C28*	203	10.0	09/16/2019	ND	225	112	200	7.95	
EXT DRO >C28-C36	28.5	10.0	09/16/2019	ND					

Surrogate: 1-Chlorooctane 87.9 % 41-142

Surrogate: 1-Chlorooctadecane 104 % 37.6-147

Cardinal Laboratories

*=Accredited Analyte

PLEASE NOTE: Liability and Damages. Cardinal's liability and client's exclusive remedy for any claim arising, whether based in contract or tort, shall be limited to the amount paid by client for analyses. All claims, including those for negligence and any other cause whatsoever shall be deemed waived unless made in writing and received by Cardinal within thirty (30) days after completion of the applicable service. In no event shall Cardinal be liable for incidental or consequential damages, including, without limitation, business interruptions, loss of use, or loss of profits incurred by client, its subsidiaries, affiliates or successors arising out of or related to the performance of the services hereunder by Cardinal, regardless of whether such claim is based upon any of the above stated reasons or otherwise. Results relate only to the samples identified above. This report shall not be reproduced except in full with written approval of Cardinal Laboratories.

Celey D. Keene, Lab Director/Quality Manager



PHONE (575) 393-2326 ° 101 E. MARLAND ° HOBBS, NM 88240

Analytical Results For:

BBC International, Inc.
 Cliff Brunson
 P.O. Box 805
 Hobbs NM, 88241
 Fax To: (575) 397-0397

Received: 09/13/2019
 Reported: 09/18/2019
 Project Name: IRIDIUM MDP1 28 21 6H
 Project Number: (4/26/19)
 Project Location: OXY - EDDY CO NM

Sampling Date: 09/09/2019
 Sampling Type: Soil
 Sampling Condition: Cool & Intact
 Sample Received By: Tamara Oldaker

Sample ID: SP 10 @ 1' (H903169-33)

Chloride, SM4500Cl-B	mg/kg	Analyzed By: AC							
Analyte	Result	Reporting Limit	Analyzed	Method Blank	BS	% Recovery	True Value QC	RPD	Qualifier
Chloride	16.0	16.0	09/16/2019	ND	416	104	400	0.00	

Cardinal Laboratories

*=Accredited Analyte

PLEASE NOTE: Liability and Damages. Cardinal's liability and client's exclusive remedy for any claim arising, whether based in contract or tort, shall be limited to the amount paid by client for analyses. All claims, including those for negligence and any other cause whatsoever shall be deemed waived unless made in writing and received by Cardinal within thirty (30) days after completion of the applicable service. In no event shall Cardinal be liable for incidental or consequential damages, including, without limitation, business interruptions, loss of use, or loss of profits incurred by client, its subsidiaries, affiliates or successors arising out of or related to the performance of the services hereunder by Cardinal, regardless of whether such claim is based upon any of the above stated reasons or otherwise. Results relate only to the samples identified above. This report shall not be reproduced except in full with written approval of Cardinal Laboratories.

Celey D. Keene, Lab Director/Quality Manager



PHONE (575) 393-2326 ° 101 E. MARLAND ° HOBBS, NM 88240

Analytical Results For:

BBC International, Inc.
 Cliff Brunson
 P.O. Box 805
 Hobbs NM, 88241
 Fax To: (575) 397-0397

Received:	09/13/2019	Sampling Date:	09/09/2019
Reported:	09/18/2019	Sampling Type:	Soil
Project Name:	IRIDIUM MDP1 28 21 6H	Sampling Condition:	Cool & Intact
Project Number:	(4/26/19)	Sample Received By:	Tamara Oldaker
Project Location:	OXY - EDDY CO NM		

Sample ID: SP 11 @ SURFACE (H903169-34)

BTEX 8021B		mg/kg		Analyzed By: BF						
Analyte	Result	Reporting Limit	Analyzed	Method Blank	BS	% Recovery	True Value QC	RPD	Qualifier	
Benzene*	<0.050	0.050	09/17/2019	ND	1.89	94.6	2.00	1.38		
Toluene*	<0.050	0.050	09/17/2019	ND	1.90	95.0	2.00	1.66		
Ethylbenzene*	<0.050	0.050	09/17/2019	ND	1.91	95.3	2.00	2.16		
Total Xylenes*	<0.150	0.150	09/17/2019	ND	5.67	94.5	6.00	1.34		
Total BTEX	<0.300	0.300	09/17/2019	ND						

Surrogate: 4-Bromofluorobenzene (PID) 77.2 % 73.3-129

Chloride, SM4500Cl-B		mg/kg		Analyzed By: AC					
Analyte	Result	Reporting Limit	Analyzed	Method Blank	BS	% Recovery	True Value QC	RPD	Qualifier
Chloride	368	16.0	09/16/2019	ND	432	108	400	0.00	

TPH 8015M		mg/kg		Analyzed By: MS					
Analyte	Result	Reporting Limit	Analyzed	Method Blank	BS	% Recovery	True Value QC	RPD	Qualifier
GRO C6-C10*	<10.0	10.0	09/16/2019	ND	216	108	200	4.15	
DRO >C10-C28*	202	10.0	09/16/2019	ND	225	112	200	7.95	
EXT DRO >C28-C36	39.5	10.0	09/16/2019	ND					

Surrogate: 1-Chlorooctane 90.6 % 41-142

Surrogate: 1-Chlorooctadecane 107 % 37.6-147

Cardinal Laboratories

*=Accredited Analyte

PLEASE NOTE: Liability and Damages. Cardinal's liability and client's exclusive remedy for any claim arising, whether based in contract or tort, shall be limited to the amount paid by client for analyses. All claims, including those for negligence and any other cause whatsoever shall be deemed waived unless made in writing and received by Cardinal within thirty (30) days after completion of the applicable service. In no event shall Cardinal be liable for incidental or consequential damages, including, without limitation, business interruptions, loss of use, or loss of profits incurred by client, its subsidiaries, affiliates or successors arising out of or related to the performance of the services hereunder by Cardinal, regardless of whether such claim is based upon any of the above stated reasons or otherwise. Results relate only to the samples identified above. This report shall not be reproduced except in full with written approval of Cardinal Laboratories.

Celey D. Keene, Lab Director/Quality Manager



PHONE (575) 393-2326 ° 101 E. MARLAND ° HOBBS, NM 88240

Analytical Results For:

BBC International, Inc.
 Cliff Brunson
 P.O. Box 805
 Hobbs NM, 88241
 Fax To: (575) 397-0397

Received: 09/13/2019
 Reported: 09/18/2019
 Project Name: IRIDIUM MDP1 28 21 6H
 Project Number: (4/26/19)
 Project Location: OXY - EDDY CO NM

Sampling Date: 09/09/2019
 Sampling Type: Soil
 Sampling Condition: Cool & Intact
 Sample Received By: Tamara Oldaker

Sample ID: SP 11 @ 1' (H903169-35)

Chloride, SM4500Cl-B	mg/kg	Analyzed By: AC							
Analyte	Result	Reporting Limit	Analyzed	Method Blank	BS	% Recovery	True Value QC	RPD	Qualifier
Chloride	32.0	16.0	09/16/2019	ND	432	108	400	0.00	

Cardinal Laboratories

*=Accredited Analyte

PLEASE NOTE: Liability and Damages. Cardinal's liability and client's exclusive remedy for any claim arising, whether based in contract or tort, shall be limited to the amount paid by client for analyses. All claims, including those for negligence and any other cause whatsoever shall be deemed waived unless made in writing and received by Cardinal within thirty (30) days after completion of the applicable service. In no event shall Cardinal be liable for incidental or consequential damages, including, without limitation, business interruptions, loss of use, or loss of profits incurred by client, its subsidiaries, affiliates or successors arising out of or related to the performance of the services hereunder by Cardinal, regardless of whether such claim is based upon any of the above stated reasons or otherwise. Results relate only to the samples identified above. This report shall not be reproduced except in full with written approval of Cardinal Laboratories.

Celey D. Keene, Lab Director/Quality Manager



PHONE (575) 393-2326 ° 101 E. MARLAND ° HOBBS, NM 88240

Notes and Definitions

QM-07	The spike recovery was outside acceptance limits for the MS and/or MSD. The batch was accepted based on acceptable LCS recovery.
ND	Analyte NOT DETECTED at or above the reporting limit
RPD	Relative Percent Difference
**	Samples not received at proper temperature of 6°C or below.
***	Insufficient time to reach temperature.
-	Chloride by SM4500Cl-B does not require samples be received at or below 6°C Samples reported on an as received basis (wet) unless otherwise noted on report

Cardinal Laboratories

*=Accredited Analyte

PLEASE NOTE: Liability and Damages. Cardinal's liability and client's exclusive remedy for any claim arising, whether based in contract or tort, shall be limited to the amount paid by client for analyses. All claims, including those for negligence and any other cause whatsoever shall be deemed waived unless made in writing and received by Cardinal within thirty (30) days after completion of the applicable service. In no event shall Cardinal be liable for incidental or consequential damages, including, without limitation, business interruptions, loss of use, or loss of profits incurred by client, its subsidiaries, affiliates or successors arising out of or related to the performance of the services hereunder by Cardinal, regardless of whether such claim is based upon any of the above stated reasons or otherwise. Results relate only to the samples identified above. This report shall not be reproduced except in full with written approval of Cardinal Laboratories.

A handwritten signature in black ink that reads "Caley D. Keene".

Caley D. Keene, Lab Director/Quality Manager



ORDINAL LABORATORIES

101 East Marland, Hobbs, NM 88240
(505) 393-2326 FAX (505) 393-2476

CHAIN-OF-CUSTODY AND ANALYSIS REQUEST

Page 38 of 41

† Cardinal cannot accept verbal changes. Please fax written changes to 505-393-2476



ORDINAL LABORATORIES

101 East Marland, Hobbs, NM 88240
(505) 393-2326 FAX (505) 393-2476

CHAIN-OF-CUSTODY AND ANALYSIS REQUEST

20.2

[illegible]



101 East Marland, Hobbs, NM 88240
(505) 393-2326 FAX (505) 393-2476

CHAIN-OF-CUSTODY AND ANALYSIS REQUEST

Page 40 of 41

4/23

† Cardinal cannot accept verbal changes. Please fax written changes to 505-393-2476

14 jo 14 ebe d



ARDINAL LABORATORIES
101 East Marland, Hobbs, NM 88240
(505) 393-2326 FAX (505) 393-2476

CHAIN-OF-CUSTODY AND ANALYSIS REQUEST

41 of 4

Company Name: BBC International, Inc.				BILL TO				ANALYSIS REQUEST																					
Project Manager: Cliff Brunson				P.O. #:																									
Address: P.O. Box 805				Company:																									
City: Hobbs				Attn:																									
State: NM Zip: 88241				Address:																									
Phone #: 575-397-6388 Fax #: 575-397-0397				City:																									
Project #:				State:				Zip:																					
Project Name: Iridium MDP1 28-21 6H - 4-26-19				Phone #:																									
Project Location:				Fax #:																									
Sampler Name: Jeff Ornelas																													
FOR LAB USE ONLY																													
Lab I.D.		Sample I.D.		(G)RAB OR (C)OMP.		# CONTAINERS		MATRIX		PRESERV.		SAMPLING		DATE		TIME													
14903169		SP9 @ 2'		6		1		GROUNDWATER						9-9-19		11:39 AM		Chloride											
31		SP10 @ SURFACE		1		1		WASTEWATER						9-9-19		11:51 AM		BTPH Ext											
32		SP10 @ 1'		1		1		SOIL						9-9-19		12:49 PM		BTEx											
33		SP11 @ SURFACE		1		1		OIL						9-9-19		1:11 PM													
34		SP11 @ 1'		1		1		SLUDGE						9-9-19		1:30 PM													
35								OTHER :																					
								ACID/BASE:																					
								ICE / COOL																					
								OTHER :																					

PLEASE NOTE: Liability and Damages: Cardinal's liability and client's exclusive remedy for any claim arising from this contract or tort shall be limited to the amount paid by the client for the analysis. All claims, including those for negligence and any other cause whatsoever shall be deemed waived unless made in writing and received by Cardinal within 30 days after completion of the applicable service. In no event shall Cardinal be liable for incidental or consequential damages, including without limitation, business interruptions, loss of use, or loss of profits incurred by client, its subsidiaries, affiliates or successors arising out of or related to the performance of services hereunder by Cardinal, regardless of whether such claims are based upon any of the above stated reasons or otherwise.

Relinquished By:	Date: 9-13-19	Received By:	Date: 9-13-19	Time: 1:30 PM	Relinquished By:	Date: 9-13-19	Received By:	Date: 9-13-19	Time: 1:30 PM	Relinquished By:	Date: 9-13-19	Received By:	Date: 9-13-19	Time: 1:30 PM
<i>[Signature]</i>		<i>[Signature]</i>			<i>[Signature]</i>		<i>[Signature]</i>			<i>[Signature]</i>		<i>[Signature]</i>		

Delivered By: (Circle One) ☒ **UPS** ☐ **Bus** ☐ **Other:** ☐ **Sample Condition:** ☒ **Cool** ☐ **Intact** ☐ **Checked By:** *[Signature]* **Checked By:** *[Signature]*

REMARKS:

† Cardinal cannot accept verbal changes. Please fax written changes to 505-393-2476