

NUMBER OF COPIES RECEIVED	
DISTRIBUTION	
SANTA FE	
FILE	
U.S.G.S.	
LAND OFFICE	
TRANSPORTER	OIL
	GAS
PROVATION OFFICE	
OPERATOR	

**NEW MEXICO OIL CONSERVATION COMMISSION**  
**Santa Fe, New Mexico**

Form C-101  
 Revised (12/1/55)

**NOTICE OF INTENTION TO DRILL**

Notice must be given to the District Office of the Oil Conservation Commission and approval obtained before drilling or recompletion begins. If changes in the proposed plan are considered advisable, a copy of this notice showing such changes will be returned to the sender. Submit this notice in **QUINTUPLICATE**. One copy will be returned following approval. See additional instructions in Rules and Regulations of the Commission. **If State Land submit 6 Copies Attach Form C-128 in triplicate to first 3 copies of form C-101**

Keyes, Oklahoma  
 (Place)

July 26, 1961  
 (Date)

OIL CONSERVATION COMMISSION  
 SANTA FE, NEW MEXICO

**ILLEGIBLE**

Gentlemen:

You are hereby notified that it is our intention to commence the Drilling of a well to be known as

HELE Oil Company  
 (Company, or Operator)

A. B. Hughes, Jr. (Lease), Well No. 1A, in A (Unit) The well is

located 3300 feet from the West line and 1980 feet from the South line of Section 33, T. 22N, R. 36 E, NMPM.

(GIVE LOCATION FROM SECTION LINE) Undefined Pool, Union County

If State Land the Oil and Gas Lease is No.....

If patented land the owner is A. B. Hughes, Jr.  
 Address Sedan, New Mexico

We propose to drill well with drilling equipment as follows: Zotary & Cable tools

The status of plugging bond is on file with the Oil Conservation Commission, (2000 foot 1 well plugging bond)

Drilling Contractor Panhandle Irrigation Company  
109-11 West Broadway  
Panhandle, Texas

We intend to complete this well in the Lower Dakota formation at an approximate depth of 1365 feet.

**CASING PROGRAM**

We propose to use the following strings of Casing and to cement them as indicated:

Size of Hole	Size of Casing	Weight per Foot	New or Second Hand	Depth	Sacks Cement
<u>7 7/8"</u>	<u>5"</u>	<u>11.50</u>	<u>Second Hand</u>		
<u>9 1/2"</u>	<u>8 5/8"</u>	<u>24.00</u>	<u>See Attachment</u>		

If changes in the above plans become advisable we will notify you immediately.

ADDITIONAL INFORMATION (If recompletion give full details of proposed plan of work.)

Approved July 28, 1961  
J. E. Kaptana, 19.....  
 Except as follows:

COLLECT AND SACK SAMPLES FOR  
 NEW MEXICO BUREAU OF MINES, SOCORRO  
 AT AT LEAST TEN FOOT INTERVALS

OIL CONSERVATION COMMISSION

By J. E. Kaptana

Sincerely yours,

HELE Oil Company  
 (Company or Operator)  
 By A. M. Hollingworth

Position Partner in Ownership  
 Send Communications regarding well to

Name A. M. Hollingworth  
 Address .....

NUMBER OF COPIES RECEIVED	
DISTRIBUTION	
SANTA FE	
FILE	
U.S.G.S.	
LAND OFFICE	
TRANSPORTER	OIL
	GAS
PRORATION OFFICE	
OPERATOR	

**NEW MEXICO OIL CONSERVATION COMMISSION**  
**WELL LOCATION AND ACREAGE DEDICATION PLAT**  
 SEE INSTRUCTIONS FOR COMPLETING THIS FORM ON THE REVERSE SIDE

FORM C-128  
 Revised 5/1/57

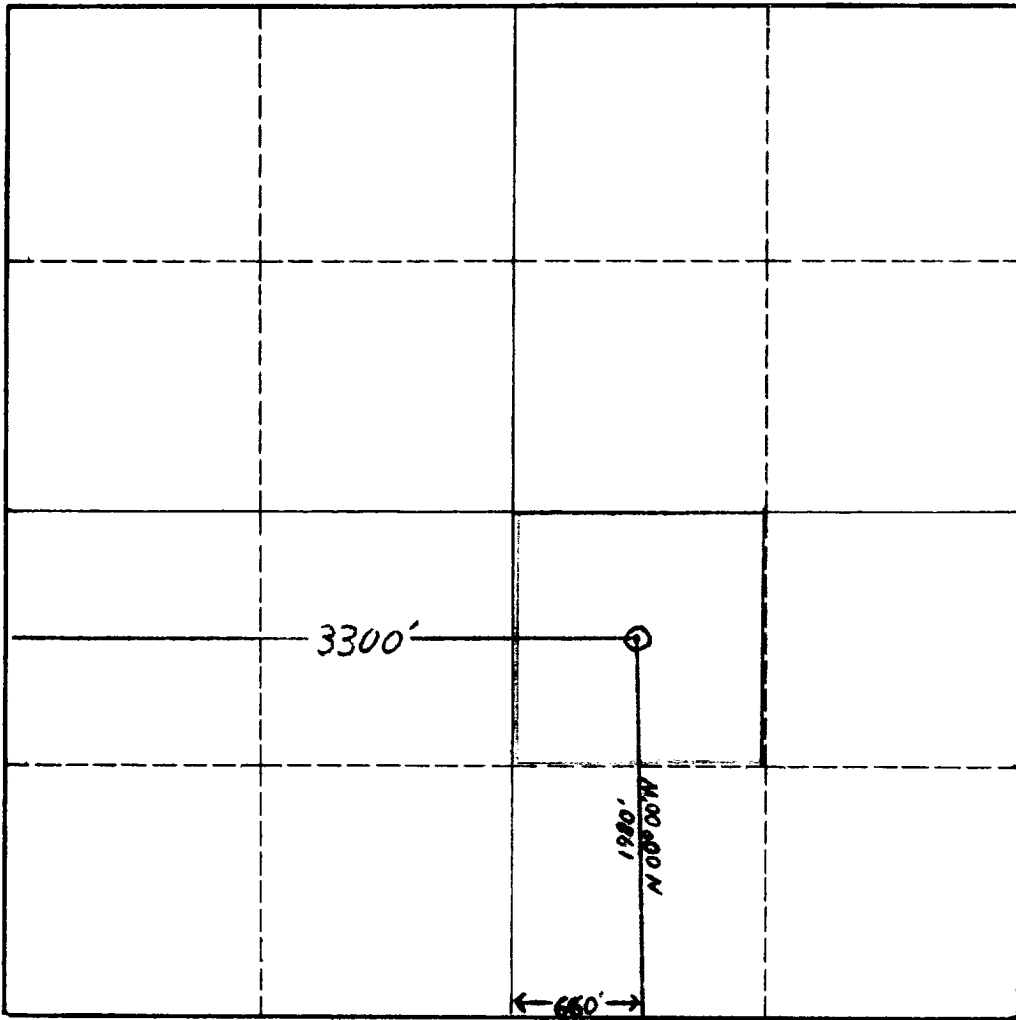
**SECTION A**

Operator <b>H H &amp; E OIL COMPANY</b>		Lease <b>A.B. HUGHES JR.</b>		Well No. <b>1 A</b>
Unit Letter <b>A</b>	Section <b>33</b>	Township <b>22 North</b>	Range <b>36 East</b>	County <b>UNION</b>
Actual Footage Location of Well: <b>3300</b> feet from the <b>West</b> line and <b>1980</b> feet from the <b>South</b> line				
Ground Level Elev. <b>4409</b>	Producing Formation <b>lower Dakota</b>	Pool <b>Undefined</b>	Dedicated Acreage: <b>40</b> Acres	

1. Is the Operator the only owner in the dedicated acreage outlined on the plat below? YES  NO  . ("Owner" means the person who has the right to drill into and to produce from any pool and to appropriate the production either for himself or for himself and another. (65-3-29 (e) NMSA 1935 Comp.)
2. If the answer to question one is "no," have the interests of all the owners been consolidated by communitization agreement or otherwise? YES  NO  . If answer is "yes," Type of Consolidation \_\_\_\_\_
3. If the answer to question two is "no," list all the owners and their respective interests below:

Owner <del>A.B. HUGHES JR.</del>	Land Description <del>None</del>
<del>Edwin, New Mexico</del>	

**SECTION B**



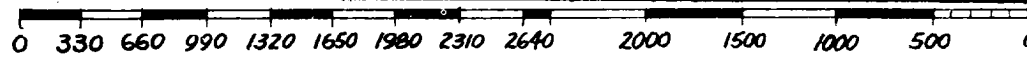
**CERTIFICATION**

I hereby certify that the information in SECTION A above is true and complete to the best of my knowledge and belief.

Name <i>C. M. Hollingsworth</i>
Position <b>Partner in Ownership</b>
Company <b>H H &amp; E OIL COMPANY</b>
Date <b>7/26/61</b>

I hereby certify that the well location shown on the plat in SECTION B was plotted from field notes of actual surveys made by me or under my supervision, and that the same is true and correct to the best of my knowledge and belief.

Date Surveyed <b>July 25, 1961</b>
Registered Professional Engineer and/or Land Surveyor <i>Kenneth J. Alberson</i>
Certificate No. <b>3235</b>



## INSTRUCTIONS FOR COMPLETION OF FORM C-128

1. Operator shall furnish and certify to the information called for in Section A.
2. Operator shall outline the dedicated acreage for *both* oil and gas wells on the plat in Section B.
3. A registered professional engineer or land surveyor registered in the State of New Mexico or approved by the Commission shall show on the plat the location of the well and certify this information in the space provided.
4. All distances shown on the plat must be from the outer boundaries of the Section.
5. If additional space is needed for listing owners and their respective interests as required in question 3 of Section A, please use space below.

This area has had very little exploration so therefore it is not known where surface casing will need to be set.

A  $9\frac{1}{2}$ " hole will be drilled and when water is found  $8\text{-}5/8$ " casing will be cemented deep enough to seal off the water. An amount of cement will be used necessary to circulate from set depth to surface.

If a completion is to be made, 5" casing will be set and the amount of cement used will be that necessary to circulate from bottom of hole to surface.

This has been discussed with J. E. Kaptenia by telephone, 7-26-61.

*R. M. Hollingworth*

This area has had very little exploration so therefore it is not known where surface casing will need to be set.

A  $9\frac{1}{2}$ " hole will be drilled and when water is found 8-5/8" casing will be cemented deep enough to seal off the water. An amount of cement will be used necessary to circulate from set depth to surface.

If a completion is to be made, 5" casing will be set and the amount of cement used will be that necessary to circulate from bottom of hole to surface.

This has been discussed with J. E. Kaptenia by telephone, 7-26-61.

*P. M. Hollingworth*

The first part of the document discusses the importance of maintaining accurate records of all transactions. It emphasizes that every entry should be supported by a valid receipt or invoice. This ensures transparency and allows for easy verification of the data.

In the second section, the author outlines the various methods used to collect and analyze the data. This includes both manual data entry and the use of specialized software tools. The goal is to ensure that the data is both accurate and easy to interpret.

The third part of the document provides a detailed breakdown of the results. It shows that there is a clear trend in the data, which is consistent with the initial hypothesis. The author also discusses the limitations of the study and suggests areas for future research.

Finally, the document concludes with a summary of the key findings and a final statement on the overall value of the research. The author expresses confidence in the results and hopes that they will be helpful to others in the field.

The data shows a significant increase in the number of transactions over the period studied. This is likely due to the implementation of the new system, which has made it easier for users to complete their transactions.