

Closure Report

Site Description

Site Name:	Hackberry 6 Fed Com #4H
Company:	Oxy Permian Ltd.
Legal Description:	U/L C, Section 6, T19S, R31E
County:	Eddy County, NM
GPS Coordinates:	N 32.69558° W 103.91203°

Release Data

Date of Release:	07/19/2015
Type of Release:	Oil
Source of Release:	Packing on stuffing box blew out
Volume of Release:	8 bbls
Volume Recovered:	6 bbls

Remediation Specifications

Remediation Parameters:	Excavate to a depth of 1 foot in the areas of SP1, SP2, SP3, SP5, and SP6. Surface scrape the area around SP4. Backfill the site with clean soil.
Remediation Activities:	February 2016

Plan Sent to OCD:	09/26/2015	Email from Cliff Brunson to Mike Bratcher
OCD Approval of Plan:	09/26/2015	Verbal Agreement only
Plan Sent to BLM:	09/26/2015	Email from Cliff Brunson to Shelly Tucker
BLM Approval of Plan:	09/26/2015	Verbal Agreement only

Supporting Documentation

Initial C-141	Signed 08/13/2015
Final C-141	Signed 02/23/2016
Site Diagram	July 2015
Groundwater Plot	150'-175'
TOPO Maps	July 2015
Lab Summary	07/28/2015-07/29/2015
Lab Analysis	07/28/2015-07/29/2015
Correspondence	Request and approval of remediation plan via email

Request for Closure

Based on the completion of the remediation plan as agreed upon, BBC International requests closure approval from NMOCD.

Cliff Brunson, President of BBC International Inc.

02/26/2016

District I
1625 N. French Dr., Hobbs, NM 88240
District II
811 S. First St., Artesia, NM 88210
District III
1000 Rio Brazos Road, Aztec, NM 87410
District IV
1220 S. St. Francis Dr., Santa Fe, NM 87505

State of New Mexico
Energy Minerals and Natural Resources

Oil Conservation Division
1220 South St. Francis Dr.
Santa Fe, NM 87505

Form C-141
Revised August 8, 2011

Submit 1 Copy to appropriate District Office in
accordance with 19.15.29 NMAC.

Release Notification and Corrective Action

OPERATOR

☒ Initial Report ☐ Final Report

Name of Company	Oxy Permian Ltd.	Contact	CJ Summers
Address	6 Desta Drive, Midland, TX 79705	Telephone No.	(432) 685-5824
Facility Name	Hackberry 6 Fed Com #4H	Facility Type	Well
Surface Owner	BLM	Mineral Owner	
		API No.	30-015-41248

LOCATION OF RELEASE

Unit Letter	Section	Township	Range	Feet from the	North/South Line	Feet from the	East/West Line	County
C	6	19S	31E					Eddy County, NM

Latitude N 32.69558°

Longitude W 103.91203°

NATURE OF RELEASE

Type of Release	Oil	Volume of Release	8 bbls	Volume Recovered	6 bbls
Source of Release	Over pressure on the stuffing box caused the packing to blow out of the well head	Date and Hour of Occurrence	07/19/2015	Date and Hour of Discovery	
Was Immediate Notice Given?	<input checked="" type="checkbox"/> Yes <input type="checkbox"/> No <input type="checkbox"/> Not Required	If YES, To Whom?	Mike Bratcher and Heather Patterson-NMOCD, Shelly Tucker and James Amos-BLM		
By Whom?	Kathy Purvis @ BBC International Inc.	Date and Hour	07/20/2015 @ 4:06 pm		
Was a Watercourse Reached?	<input type="checkbox"/> Yes <input checked="" type="checkbox"/> No	If YES, Volume Impacting the Watercourse.			

If a Watercourse was Impacted, Describe Fully.*


Describe Cause of Problem and Remedial Action Taken.*

Over pressure on the stuffing box caused the packing to blow out on the well head and spill 8 bbls of oil onto the ground. A vacuum truck recovered 6 bbls of oil and the packing was replaced.

Describe Area Affected and Cleanup Action Taken.*

The affected area is approximately 105' x 40' on location. Remediation will be completed according to a remediation plan approved by NMOCD and the BLM.

I hereby certify that the information given above is true and complete to the best of my knowledge and understand that pursuant to NMOCD rules and regulations all operators are required to report and/or file certain release notifications and perform corrective actions for releases which may endanger public health or the environment. The acceptance of a C-141 report by the NMOCD marked as "Final Report" does not relieve the operator of liability should their operations have failed to adequately investigate and remediate contamination that pose a threat to ground water, surface water, human health or the environment. In addition, NMOCD acceptance of a C-141 report does not relieve the operator of responsibility for compliance with any other federal, state, or local laws and/or regulations.

Signature: 	<u>OIL CONSERVATION DIVISION</u>		
Printed Name: CJ Summers	Approved by Environmental Specialist:		
Title: HES Lead	Approval Date:	Expiration Date:	
E-mail Address: chancey_summers@oxy.com	Conditions of Approval:		Attached <input type="checkbox"/>
Date: 8-13-15	Phone: (432) 685-5824		

* Attach Additional Sheets If Necessary

District I
1625 N. French Dr., Hobbs, NM 88240
District II
811 S. First St., Artesia, NM 88210
District III
1000 Rio Brazos Road, Aztec, NM 87410
District IV
1220 S. St. Francis Dr., Santa Fe, NM 87505

State of New Mexico
Energy Minerals and Natural Resources

Oil Conservation Division
1220 South St. Francis Dr.
Santa Fe, NM 87505

Form C-141
Revised August 8, 2011

Submit 1 Copy to appropriate District Office in
accordance with 19.15.29 NMAC.

Release Notification and Corrective Action

OPERATOR

☐ Initial Report ☒ Final Report

Name of Company	Oxy Permian Ltd.	Contact	Casey Summers
Address	6 Desta Drive, Midland, TX 79705	Telephone No.	(575) 513-8289
Facility Name	Hackberry 6 Fed Com #4H	Facility Type	Well
Surface Owner	BLM	Mineral Owner	
		API No.	30-015-41248

LOCATION OF RELEASE

Unit Letter	Section	Township	Range	Feet from the	North/South Line	Feet from the	East/West Line	County
C	6	19S	31E					Eddy County, NM

Latitude N 32.69558° Longitude W 103.91203°

NATURE OF RELEASE

Type of Release	Oil	Volume of Release	8 bbls	Volume Recovered	6 bbls
Source of Release	Over pressure on the stuffing box caused the packing to blow out of the well head	Date and Hour of Occurrence	07/19/2015	Date and Hour of Discovery	
Was Immediate Notice Given?	<input checked="" type="checkbox"/> Yes <input type="checkbox"/> No <input type="checkbox"/> Not Required	If YES, To Whom?	Mike Bratcher and Heather Patterson-NMOCD, Shelly Tucker and James Amos-BLM		
By Whom?	Kathy Purvis @ BBC International Inc.	Date and Hour	07/20/2015 @ 4:06 pm		
Was a Watercourse Reached?	<input type="checkbox"/> Yes <input checked="" type="checkbox"/> No	If YES, Volume Impacting the Watercourse.			

If a Watercourse was Impacted, Describe Fully.*

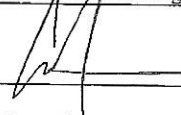
Describe Cause of Problem and Remedial Action Taken.*

Over pressure on the stuffing box caused the packing to blow out on the well head and spill 8 bbls of oil onto the ground. A vacuum truck recovered 6 bbls of oil and the packing was replaced.

Describe Area Affected and Cleanup Action Taken.*

The affected area is approximately 105' x 40' on location. Remediation was completed in accordance with the remediation plan approved by both NMOCD and the BLM.

I hereby certify that the information given above is true and complete to the best of my knowledge and understand that pursuant to NMOCD rules and regulations all operators are required to report and/or file certain release notifications and perform corrective actions for releases which may endanger public health or the environment. The acceptance of a C-141 report by the NMOCD marked as "Final Report" does not relieve the operator of liability should their operations have failed to adequately investigate and remediate contamination that pose a threat to ground water, surface water, human health or the environment. In addition, NMOCD acceptance of a C-141 report does not relieve the operator of responsibility for compliance with any other federal, state, or local laws and/or regulations.

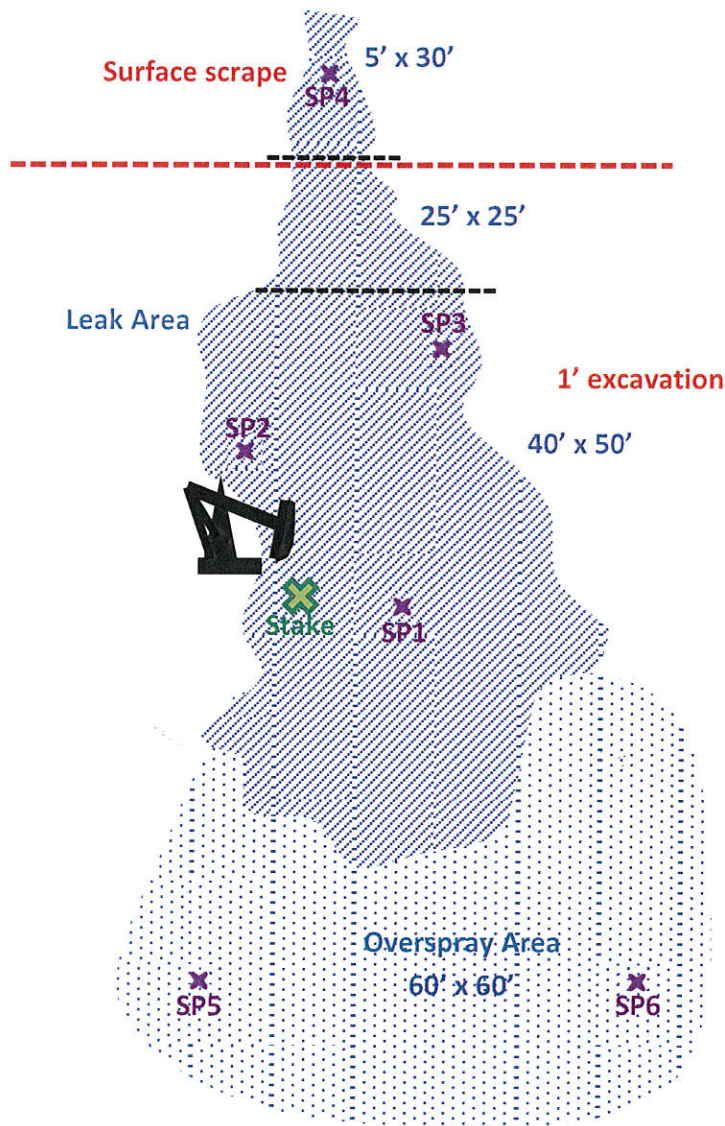
Signature: 		OIL CONSERVATION DIVISION	
Printed Name: Casey Summers		Approved by Environmental Specialist:	
Title: NM Environmental Advisor		Approval Date:	Expiration Date:
E-mail Address: casey_summers@oxy.com		Conditions of Approval:	
Date: 2-23-16	Phone: (575) 513-8289	Attached <input type="checkbox"/>	

* Attach Additional Sheets If Necessary



Oxy

Hackberry 6 Fed Com #4H



Oxy, Hackberry 6 Federal Com #4H

U/L C , Section 6, T19S, R31E

Eddy County, NM

N 32.69558° W 103.91203°

API#30-015-41248

BBC International, Inc.

Oxy

Hackberry 6 Fed Com #4H

Date: 07/28/2015

DRWG by: K. Purvis

NOT TO SCALE

File: Oxy 2015

Groundwater Plot

Oxy Hackberry 6 Fed Com #4H

County
Eddy

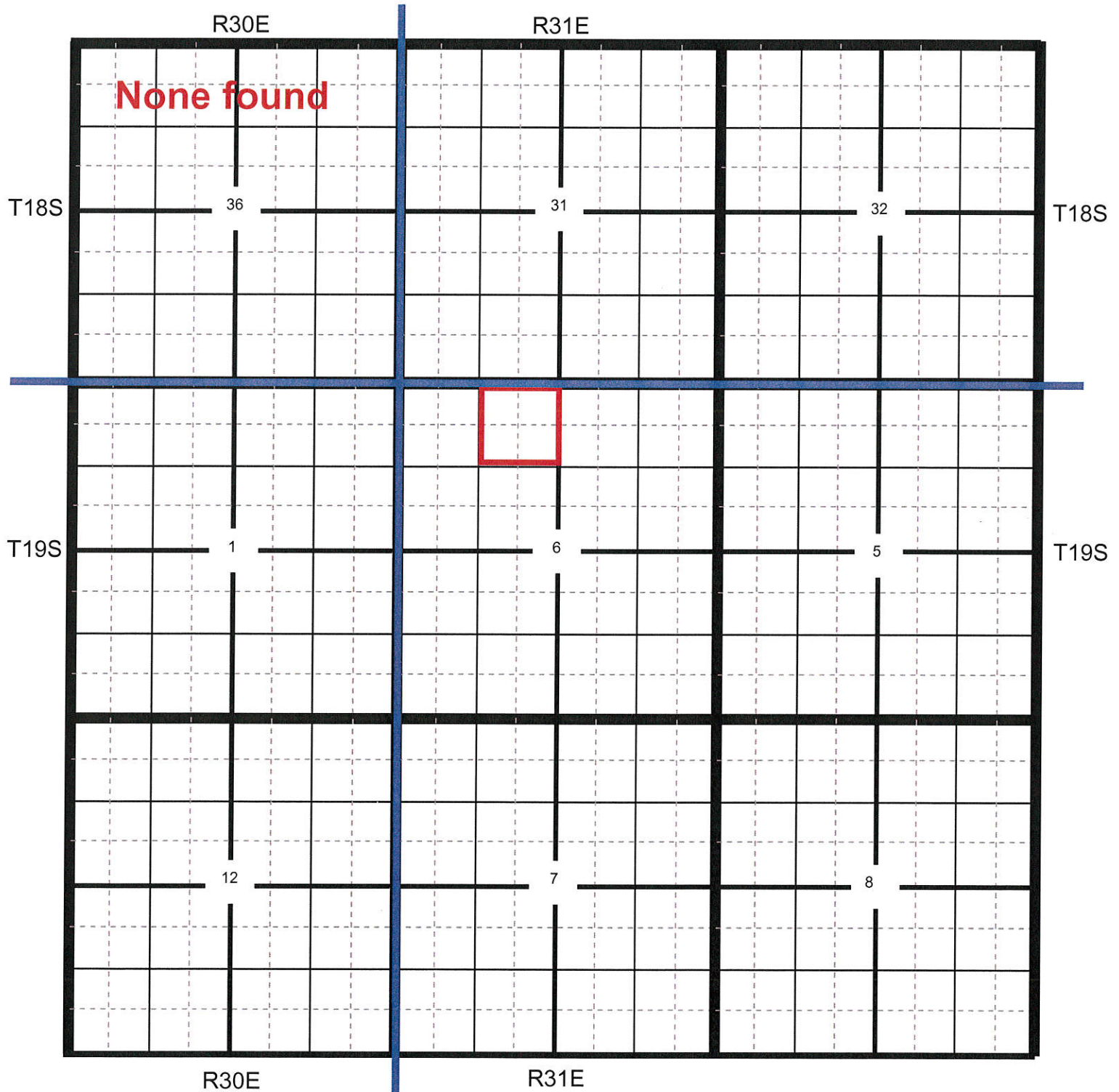
Unit Letter
C

Section
6

Township
19S

Range
31E

Trend Map 150'-175'



📍 Location

● OCD

● USGS

● SEO

● All Databases

Oxy Hackberry 6 Fed Com #4H

County
Eddy

Unit Letter
C

Section
6

Township
19S

Range
31E

Trend Map 150'-175'

1

2

NW/NW None found Unit Letter D	NE/NW Unit Letter C	NW/NE Unit Letter B	NE/NE Unit Letter A
SW/NW Unit Letter E	SE/NW Unit Letter F	SW/NE Unit Letter G	SE/NE Unit Letter H
NW/SW Unit Letter L	NE/SW Unit Letter K	NW/SE Unit Letter J	NE/SE Unit Letter I
SW/SW Unit Letter M	SE/SW Unit Letter N	SW/SE Unit Letter O	SE/SE Unit Letter P

3

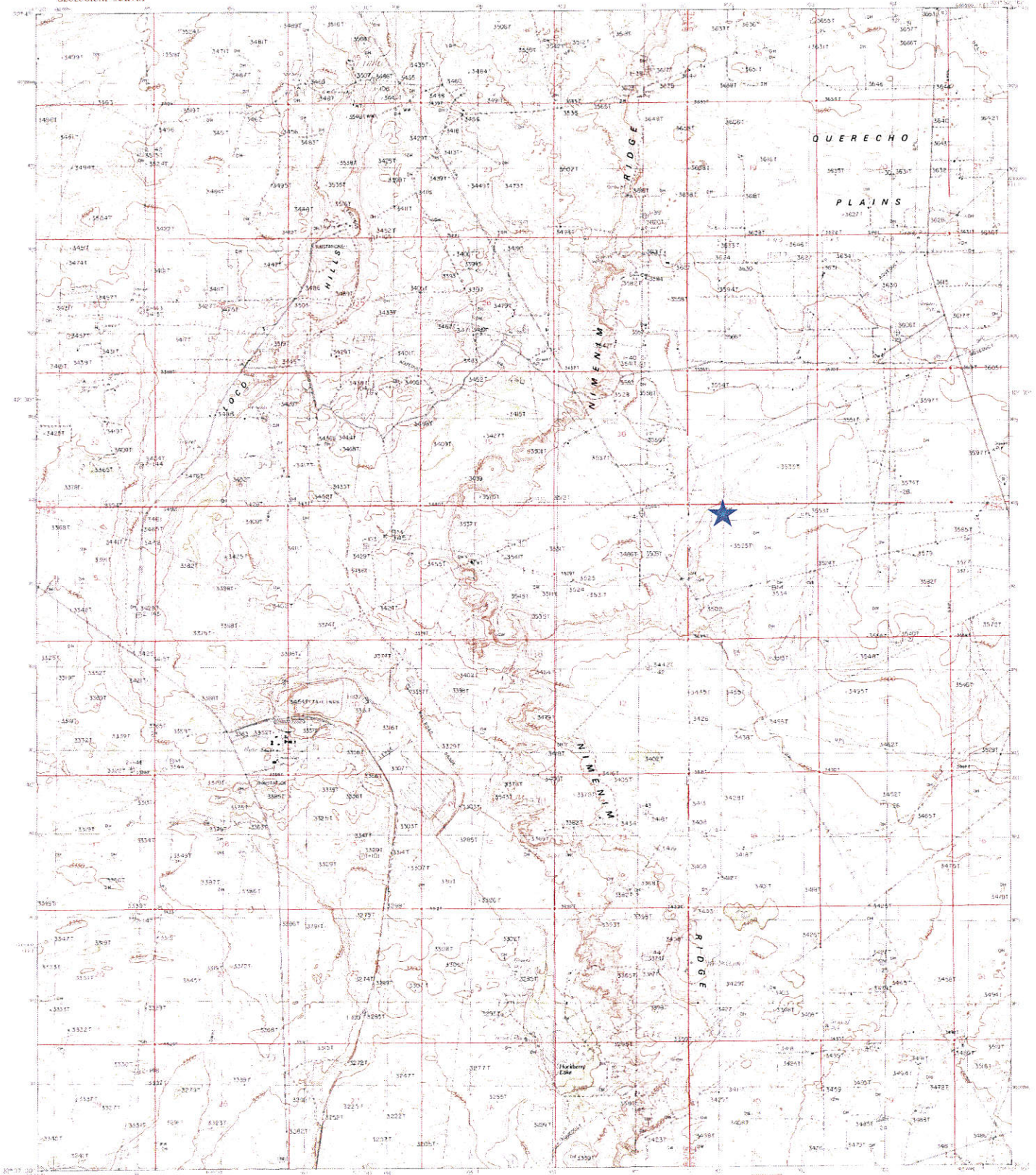
4

Oxy

Hackberry 6 Fed Com #4H

UNITED STATES
DEPARTMENT OF THE INTERIOR
GEOLOGICAL SURVEY

HACKBERRY LAKE QUADRANGLE
NEW MEXICO-EDDY CO.
7.5 MINUTE SERIES (TOPOGRAPHIC)

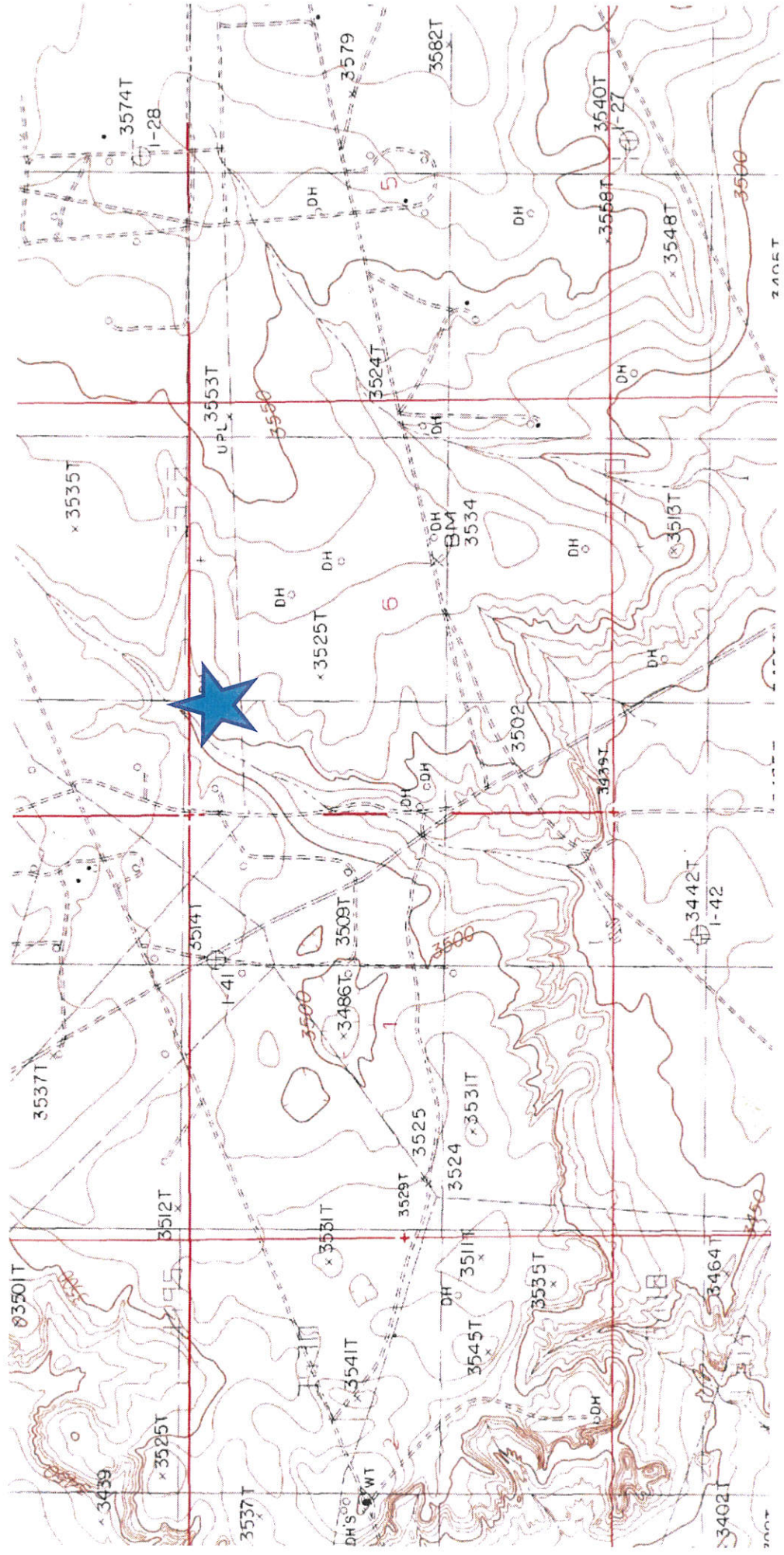


PRODUCED BY THE UNITED STATES GEOLOGICAL SURVEY
CONFORMS TO THE NATIONAL MAP ACTUARY STANDARDS
FOR THE 7.5 MINUTE SERIES (TOPOGRAPHIC)
THIS MAP WAS COMPILED FROM THE FOLLOWING SOURCES:
1. UNITED STATES GEOLOGICAL SURVEY, 1968, 7.5 MINUTE SERIES (TOPOGRAPHIC)
2. UNITED STATES GEOLOGICAL SURVEY, 1968, 7.5 MINUTE SERIES (TOPOGRAPHIC)
3. UNITED STATES GEOLOGICAL SURVEY, 1968, 7.5 MINUTE SERIES (TOPOGRAPHIC)
4. UNITED STATES GEOLOGICAL SURVEY, 1968, 7.5 MINUTE SERIES (TOPOGRAPHIC)
5. UNITED STATES GEOLOGICAL SURVEY, 1968, 7.5 MINUTE SERIES (TOPOGRAPHIC)
6. UNITED STATES GEOLOGICAL SURVEY, 1968, 7.5 MINUTE SERIES (TOPOGRAPHIC)
7. UNITED STATES GEOLOGICAL SURVEY, 1968, 7.5 MINUTE SERIES (TOPOGRAPHIC)
8. UNITED STATES GEOLOGICAL SURVEY, 1968, 7.5 MINUTE SERIES (TOPOGRAPHIC)
9. UNITED STATES GEOLOGICAL SURVEY, 1968, 7.5 MINUTE SERIES (TOPOGRAPHIC)
10. UNITED STATES GEOLOGICAL SURVEY, 1968, 7.5 MINUTE SERIES (TOPOGRAPHIC)
11. UNITED STATES GEOLOGICAL SURVEY, 1968, 7.5 MINUTE SERIES (TOPOGRAPHIC)
12. UNITED STATES GEOLOGICAL SURVEY, 1968, 7.5 MINUTE SERIES (TOPOGRAPHIC)
13. UNITED STATES GEOLOGICAL SURVEY, 1968, 7.5 MINUTE SERIES (TOPOGRAPHIC)
14. UNITED STATES GEOLOGICAL SURVEY, 1968, 7.5 MINUTE SERIES (TOPOGRAPHIC)
15. UNITED STATES GEOLOGICAL SURVEY, 1968, 7.5 MINUTE SERIES (TOPOGRAPHIC)
16. UNITED STATES GEOLOGICAL SURVEY, 1968, 7.5 MINUTE SERIES (TOPOGRAPHIC)
17. UNITED STATES GEOLOGICAL SURVEY, 1968, 7.5 MINUTE SERIES (TOPOGRAPHIC)
18. UNITED STATES GEOLOGICAL SURVEY, 1968, 7.5 MINUTE SERIES (TOPOGRAPHIC)
19. UNITED STATES GEOLOGICAL SURVEY, 1968, 7.5 MINUTE SERIES (TOPOGRAPHIC)
20. UNITED STATES GEOLOGICAL SURVEY, 1968, 7.5 MINUTE SERIES (TOPOGRAPHIC)
21. UNITED STATES GEOLOGICAL SURVEY, 1968, 7.5 MINUTE SERIES (TOPOGRAPHIC)
22. UNITED STATES GEOLOGICAL SURVEY, 1968, 7.5 MINUTE SERIES (TOPOGRAPHIC)
23. UNITED STATES GEOLOGICAL SURVEY, 1968, 7.5 MINUTE SERIES (TOPOGRAPHIC)
24. UNITED STATES GEOLOGICAL SURVEY, 1968, 7.5 MINUTE SERIES (TOPOGRAPHIC)
25. UNITED STATES GEOLOGICAL SURVEY, 1968, 7.5 MINUTE SERIES (TOPOGRAPHIC)
26. UNITED STATES GEOLOGICAL SURVEY, 1968, 7.5 MINUTE SERIES (TOPOGRAPHIC)
27. UNITED STATES GEOLOGICAL SURVEY, 1968, 7.5 MINUTE SERIES (TOPOGRAPHIC)
28. UNITED STATES GEOLOGICAL SURVEY, 1968, 7.5 MINUTE SERIES (TOPOGRAPHIC)
29. UNITED STATES GEOLOGICAL SURVEY, 1968, 7.5 MINUTE SERIES (TOPOGRAPHIC)
30. UNITED STATES GEOLOGICAL SURVEY, 1968, 7.5 MINUTE SERIES (TOPOGRAPHIC)
31. UNITED STATES GEOLOGICAL SURVEY, 1968, 7.5 MINUTE SERIES (TOPOGRAPHIC)
32. UNITED STATES GEOLOGICAL SURVEY, 1968, 7.5 MINUTE SERIES (TOPOGRAPHIC)
33. UNITED STATES GEOLOGICAL SURVEY, 1968, 7.5 MINUTE SERIES (TOPOGRAPHIC)
34. UNITED STATES GEOLOGICAL SURVEY, 1968, 7.5 MINUTE SERIES (TOPOGRAPHIC)
35. UNITED STATES GEOLOGICAL SURVEY, 1968, 7.5 MINUTE SERIES (TOPOGRAPHIC)
36. UNITED STATES GEOLOGICAL SURVEY, 1968, 7.5 MINUTE SERIES (TOPOGRAPHIC)
37. UNITED STATES GEOLOGICAL SURVEY, 1968, 7.5 MINUTE SERIES (TOPOGRAPHIC)
38. UNITED STATES GEOLOGICAL SURVEY, 1968, 7.5 MINUTE SERIES (TOPOGRAPHIC)
39. UNITED STATES GEOLOGICAL SURVEY, 1968, 7.5 MINUTE SERIES (TOPOGRAPHIC)
40. UNITED STATES GEOLOGICAL SURVEY, 1968, 7.5 MINUTE SERIES (TOPOGRAPHIC)
41. UNITED STATES GEOLOGICAL SURVEY, 1968, 7.5 MINUTE SERIES (TOPOGRAPHIC)
42. UNITED STATES GEOLOGICAL SURVEY, 1968, 7.5 MINUTE SERIES (TOPOGRAPHIC)
43. UNITED STATES GEOLOGICAL SURVEY, 1968, 7.5 MINUTE SERIES (TOPOGRAPHIC)
44. UNITED STATES GEOLOGICAL SURVEY, 1968, 7.5 MINUTE SERIES (TOPOGRAPHIC)
45. UNITED STATES GEOLOGICAL SURVEY, 1968, 7.5 MINUTE SERIES (TOPOGRAPHIC)
46. UNITED STATES GEOLOGICAL SURVEY, 1968, 7.5 MINUTE SERIES (TOPOGRAPHIC)
47. UNITED STATES GEOLOGICAL SURVEY, 1968, 7.5 MINUTE SERIES (TOPOGRAPHIC)
48. UNITED STATES GEOLOGICAL SURVEY, 1968, 7.5 MINUTE SERIES (TOPOGRAPHIC)
49. UNITED STATES GEOLOGICAL SURVEY, 1968, 7.5 MINUTE SERIES (TOPOGRAPHIC)
50. UNITED STATES GEOLOGICAL SURVEY, 1968, 7.5 MINUTE SERIES (TOPOGRAPHIC)
51. UNITED STATES GEOLOGICAL SURVEY, 1968, 7.5 MINUTE SERIES (TOPOGRAPHIC)
52. UNITED STATES GEOLOGICAL SURVEY, 1968, 7.5 MINUTE SERIES (TOPOGRAPHIC)
53. UNITED STATES GEOLOGICAL SURVEY, 1968, 7.5 MINUTE SERIES (TOPOGRAPHIC)
54. UNITED STATES GEOLOGICAL SURVEY, 1968, 7.5 MINUTE SERIES (TOPOGRAPHIC)
55. UNITED STATES GEOLOGICAL SURVEY, 1968, 7.5 MINUTE SERIES (TOPOGRAPHIC)
56. UNITED STATES GEOLOGICAL SURVEY, 1968, 7.5 MINUTE SERIES (TOPOGRAPHIC)
57. UNITED STATES GEOLOGICAL SURVEY, 1968, 7.5 MINUTE SERIES (TOPOGRAPHIC)
58. UNITED STATES GEOLOGICAL SURVEY, 1968, 7.5 MINUTE SERIES (TOPOGRAPHIC)
59. UNITED STATES GEOLOGICAL SURVEY, 1968, 7.5 MINUTE SERIES (TOPOGRAPHIC)
60. UNITED STATES GEOLOGICAL SURVEY, 1968, 7.5 MINUTE SERIES (TOPOGRAPHIC)
61. UNITED STATES GEOLOGICAL SURVEY, 1968, 7.5 MINUTE SERIES (TOPOGRAPHIC)
62. UNITED STATES GEOLOGICAL SURVEY, 1968, 7.5 MINUTE SERIES (TOPOGRAPHIC)
63. UNITED STATES GEOLOGICAL SURVEY, 1968, 7.5 MINUTE SERIES (TOPOGRAPHIC)
64. UNITED STATES GEOLOGICAL SURVEY, 1968, 7.5 MINUTE SERIES (TOPOGRAPHIC)
65. UNITED STATES GEOLOGICAL SURVEY, 1968, 7.5 MINUTE SERIES (TOPOGRAPHIC)
66. UNITED STATES GEOLOGICAL SURVEY, 1968, 7.5 MINUTE SERIES (TOPOGRAPHIC)
67. UNITED STATES GEOLOGICAL SURVEY, 1968, 7.5 MINUTE SERIES (TOPOGRAPHIC)
68. UNITED STATES GEOLOGICAL SURVEY, 1968, 7.5 MINUTE SERIES (TOPOGRAPHIC)
69. UNITED STATES GEOLOGICAL SURVEY, 1968, 7.5 MINUTE SERIES (TOPOGRAPHIC)
70. UNITED STATES GEOLOGICAL SURVEY, 1968, 7.5 MINUTE SERIES (TOPOGRAPHIC)
71. UNITED STATES GEOLOGICAL SURVEY, 1968, 7.5 MINUTE SERIES (TOPOGRAPHIC)
72. UNITED STATES GEOLOGICAL SURVEY, 1968, 7.5 MINUTE SERIES (TOPOGRAPHIC)
73. UNITED STATES GEOLOGICAL SURVEY, 1968, 7.5 MINUTE SERIES (TOPOGRAPHIC)
74. UNITED STATES GEOLOGICAL SURVEY, 1968, 7.5 MINUTE SERIES (TOPOGRAPHIC)
75. UNITED STATES GEOLOGICAL SURVEY, 1968, 7.5 MINUTE SERIES (TOPOGRAPHIC)
76. UNITED STATES GEOLOGICAL SURVEY, 1968, 7.5 MINUTE SERIES (TOPOGRAPHIC)
77. UNITED STATES GEOLOGICAL SURVEY, 1968, 7.5 MINUTE SERIES (TOPOGRAPHIC)
78. UNITED STATES GEOLOGICAL SURVEY, 1968, 7.5 MINUTE SERIES (TOPOGRAPHIC)
79. UNITED STATES GEOLOGICAL SURVEY, 1968, 7.5 MINUTE SERIES (TOPOGRAPHIC)
80. UNITED STATES GEOLOGICAL SURVEY, 1968, 7.5 MINUTE SERIES (TOPOGRAPHIC)
81. UNITED STATES GEOLOGICAL SURVEY, 1968, 7.5 MINUTE SERIES (TOPOGRAPHIC)
82. UNITED STATES GEOLOGICAL SURVEY, 1968, 7.5 MINUTE SERIES (TOPOGRAPHIC)
83. UNITED STATES GEOLOGICAL SURVEY, 1968, 7.5 MINUTE SERIES (TOPOGRAPHIC)
84. UNITED STATES GEOLOGICAL SURVEY, 1968, 7.5 MINUTE SERIES (TOPOGRAPHIC)
85. UNITED STATES GEOLOGICAL SURVEY, 1968, 7.5 MINUTE SERIES (TOPOGRAPHIC)
86. UNITED STATES GEOLOGICAL SURVEY, 1968, 7.5 MINUTE SERIES (TOPOGRAPHIC)
87. UNITED STATES GEOLOGICAL SURVEY, 1968, 7.5 MINUTE SERIES (TOPOGRAPHIC)
88. UNITED STATES GEOLOGICAL SURVEY, 1968, 7.5 MINUTE SERIES (TOPOGRAPHIC)
89. UNITED STATES GEOLOGICAL SURVEY, 1968, 7.5 MINUTE SERIES (TOPOGRAPHIC)
90. UNITED STATES GEOLOGICAL SURVEY, 1968, 7.5 MINUTE SERIES (TOPOGRAPHIC)
91. UNITED STATES GEOLOGICAL SURVEY, 1968, 7.5 MINUTE SERIES (TOPOGRAPHIC)
92. UNITED STATES GEOLOGICAL SURVEY, 1968, 7.5 MINUTE SERIES (TOPOGRAPHIC)
93. UNITED STATES GEOLOGICAL SURVEY, 1968, 7.5 MINUTE SERIES (TOPOGRAPHIC)
94. UNITED STATES GEOLOGICAL SURVEY, 1968, 7.5 MINUTE SERIES (TOPOGRAPHIC)
95. UNITED STATES GEOLOGICAL SURVEY, 1968, 7.5 MINUTE SERIES (TOPOGRAPHIC)
96. UNITED STATES GEOLOGICAL SURVEY, 1968, 7.5 MINUTE SERIES (TOPOGRAPHIC)
97. UNITED STATES GEOLOGICAL SURVEY, 1968, 7.5 MINUTE SERIES (TOPOGRAPHIC)
98. UNITED STATES GEOLOGICAL SURVEY, 1968, 7.5 MINUTE SERIES (TOPOGRAPHIC)
99. UNITED STATES GEOLOGICAL SURVEY, 1968, 7.5 MINUTE SERIES (TOPOGRAPHIC)
100. UNITED STATES GEOLOGICAL SURVEY, 1968, 7.5 MINUTE SERIES (TOPOGRAPHIC)

PROVISIONAL MAP
Produced from original
manuscript drawings. Information
shown as of date of
field check.



Hackberry 6 Fed Com #4H



Laboratory Analytical Results Summary
Hackberry 6 Fed Com #4H

Analyte	Method	Sample Date	SP1 @ SURFACE 7/29/15	SP1 @ 1' 7/29/15	SP1 @ 2' 7/29/15	SP1 @ 3' 7/29/15	SP1 @ 4' 7/29/15
Benzene	BTEX 8021B		mg/Kg	mg/Kg	mg/Kg	mg/Kg	mg/Kg
Toluene	BTEX 8021B		<0.050	<0.050	n/a	n/a	n/a
Ethylbenzene	BTEX 8021B		0.061	<0.050	n/a	n/a	n/a
Total Xylenes	BTEX 8021B		0.145	<0.050	n/a	n/a	n/a
Total BTEX	BTEX 8021B		0.458	<0.150	n/a	n/a	n/a
Chloride	SM4500Cl-B		0.664	<0.300	n/a	n/a	n/a
GRO	TPH 8015M		14000	1710	1620	80	32
DRO	TPH 8015M		<100	<10.0	n/a	n/a	n/a
			27600	42.8	n/a	n/a	n/a

Analyte	Method	Sample Date	SP2 @ SURFACE 7/29/15	SP2 @ 1' 7/29/15	SP2 @ 2' 7/29/15	SP2 @ 3' 7/29/15	SP2 @ 4' 7/29/15
Benzene	BTEX 8021B		mg/Kg	mg/Kg	mg/Kg	mg/Kg	mg/Kg
Toluene	BTEX 8021B		<0.100	<0.050	n/a	n/a	n/a
Ethylbenzene	BTEX 8021B		2.62	<0.050	n/a	n/a	n/a
Total Xylenes	BTEX 8021B		4.22	<0.050	n/a	n/a	n/a
Total BTEX	BTEX 8021B		7.55	<0.150	n/a	n/a	n/a
Chloride	SM4500Cl-B		14.4	<0.300	n/a	n/a	n/a
GRO	TPH 8015M		20400	592	576	64	16
DRO	TPH 8015M		227	<10.0	n/a	n/a	n/a
			36800	<10.0	n/a	n/a	n/a

Analyte	Method	Sample Date	SP3 @ SURFACE 7/29/15	SP3 @ 1' 7/29/15	SP3 @ 2' 7/29/15	SP3 @ 3' 7/29/15
Benzene	BTEX 8021B		mg/Kg	mg/Kg	mg/Kg	mg/Kg
Toluene	BTEX 8021B		<0.050	<0.050	n/a	n/a
Ethylbenzene	BTEX 8021B		0.209	<0.050	n/a	n/a
Total Xylenes	BTEX 8021B		0.978	<0.050	n/a	n/a
Total BTEX	BTEX 8021B		1.99	<0.150	n/a	n/a
Chloride	SM4500Cl-B		3.18	<0.300	n/a	<16.0
GRO	TPH 8015M		7520	320	304	<16.0
DRO	TPH 8015M		122	<10.0	n/a	n/a
			34500	713	n/a	n/a

Analyte	Method	Sample Date	SP4 @ SURFACE 7/29/15	SP4 @ 1' 7/29/15	SP4 @ 2' 7/29/15	SP4 @ 3' 7/29/15
Benzene	BTEX 8021B		mg/Kg	mg/Kg	mg/Kg	mg/Kg
Toluene	BTEX 8021B		<0.050	<0.050	n/a	n/a
Ethylbenzene	BTEX 8021B		0.099	<0.050	n/a	n/a
Total Xylenes	BTEX 8021B		0.665	<0.050	n/a	n/a
Total BTEX	BTEX 8021B		1.36	<0.150	n/a	n/a
Chloride	SM4500Cl-B		2.13	<0.300	n/a	n/a
GRO	TPH 8015M		24400	160	224	48
DRO	TPH 8015M		102	<10.0	n/a	n/a
			46100	<10.0	n/a	n/a

Analyte	Method	Sample Date	SP5 @ SURFACE 7/29/15	SP5 @ 1' 7/29/15	SP5 @ 2' 7/29/15	SP5 @ 3' 7/29/15	SP5 @ 4' 7/29/15	SP5 @ 5' 7/29/15	SP5 @ 6' 7/29/15
Benzene	BTEX 8021B		mg/Kg	mg/Kg	mg/Kg	mg/Kg	mg/Kg	mg/Kg	mg/Kg
Toluene	BTEX 8021B		<0.050	<0.050	n/a	n/a	n/a	n/a	n/a
Ethylbenzene	BTEX 8021B		<0.050	<0.050	n/a	n/a	n/a	n/a	n/a
Total Xylenes	BTEX 8021B		<0.050	<0.050	n/a	n/a	n/a	n/a	n/a
Total BTEX	BTEX 8021B		<0.150	<0.150	n/a	n/a	n/a	n/a	n/a
Chloride	SM4500Cl-B		<0.300	<0.300	n/a	n/a	n/a	n/a	n/a
GRO	TPH 8015M		29600	3800	736	576	224	192	256
DRO	TPH 8015M		<50.0	<10.0	n/a	n/a	n/a	n/a	n/a
			3090	16.9	n/a	n/a	n/a	n/a	n/a

Analyte	Method	Sample Date	SP6 @ SURFACE 7/29/15	SP6 @ 1' 7/29/15	SP6 @ 2' 7/29/15	SP6 @ 3' 7/29/15	SP6 @ 4' 7/29/15	SP6 @ 5' 7/29/15	SP6 @ 6' 7/29/15
Benzene	BTEX 8021B		mg/Kg	mg/Kg	mg/Kg	mg/Kg	mg/Kg	mg/Kg	mg/Kg
Toluene	BTEX 8021B		<0.050	<0.050	n/a	n/a	n/a	n/a	n/a
Ethylbenzene	BTEX 8021B		<0.050	<0.050	n/a	n/a	n/a	n/a	n/a
Total Xylenes	BTEX 8021B		<0.050	<0.050	n/a	n/a	n/a	n/a	n/a
Total BTEX	BTEX 8021B		<0.150	<0.150	n/a	n/a	n/a	n/a	n/a
Chloride	SM4500Cl-B		<0.300	<0.300	n/a	n/a	n/a	n/a	n/a
GRO	TPH 8015M		28000	3400	704	704	320	224	208
DRO	TPH 8015M		<50.0	<10.0	n/a	n/a	n/a	n/a	n/a
			2430	19.4	n/a	n/a	n/a	n/a	n/a

August 06, 2015

Cliff Brunson

BBC International, Inc.

P.O. Box 805

Hobbs, NM 88241

RE: HACKBERRY 6 FED COM #4H

Enclosed are the results of analyses for samples received by the laboratory on 07/30/15 11:50.

Cardinal Laboratories is accredited through Texas NELAP under certificate number T104704398-13-5. Accreditation applies to drinking water, non-potable water and solid and chemical materials. All accredited analytes are denoted by an asterisk (*). For a complete list of accredited analytes and matrices visit the TCEQ website at www.tceq.texas.gov/field/qa/lab_accred_certif.html.

Cardinal Laboratories is accredited through the State of Colorado Department of Public Health and Environment for:

Method EPA 552.2	Haloacetic Acids (HAA-5)
Method EPA 524.2	Total Trihalomethanes (TTHM)
Method EPA 524.4	Regulated VOCs (V1, V2, V3)

Accreditation applies to public drinking water matrices.

This report meets NELAP requirements and is made up of a cover page, analytical results, and a copy of the original chain-of-custody. If you have any questions concerning this report, please feel free to contact me.

Sincerely,



Celey D. Keene

Lab Director/Quality Manager

Analytical Results For:

BBC International, Inc.
Cliff Brunson
P.O. Box 805
Hobbs NM, 88241
Fax To: (575) 397-0397

Received: 07/30/2015
Reported: 08/06/2015
Project Name: HACKBERRY 6 FED COM #4H
Project Number: NONE GIVEN
Project Location: EDDY COUNTY, NM

Sampling Date: 07/28/2015
Sampling Type: Soil
Sampling Condition: Cool & Intact
Sample Received By: Jodi Henson

Sample ID: SP1 @ SURFACE (H501981-01)

BTEX 8021B		mg/kg	Analyzed By: MS						
Analyte	Result	Reporting Limit	Analyzed	Method Blank	BS	% Recovery	True Value QC	RPD	Qualifier
Benzene*	<0.050	0.050	07/31/2015	ND	1.98	99.2	2.00	3.64	
Toluene*	0.061	0.050	07/31/2015	ND	2.02	101	2.00	4.60	
Ethylbenzene*	0.145	0.050	07/31/2015	ND	2.17	108	2.00	5.97	
Total Xylenes*	0.458	0.150	07/31/2015	ND	5.68	94.7	6.00	6.65	
Total BTEX	0.664	0.300	07/31/2015	ND					

Surrogate: 4-Bromofluorobenzene (PIL) 124 % 85.6-137

Chloride, SM4500Cl-B		mg/kg	Analyzed By: AP						
Analyte	Result	Reporting Limit	Analyzed	Method Blank	BS	% Recovery	True Value QC	RPD	Qualifier
Chloride	14000	16.0	08/04/2015	ND	432	108	400	3.64	
TPH 8015M		mg/kg	Analyzed By: MS						
S-06									

Surrogate: 1-Chlorooctane 105 % 47.2-157

Surrogate: 1-Chlorooctadecane 1090 % 52.1-176

Cardinal Laboratories

*=Accredited Analyte

PLEASE NOTE: Liability and Damages. Cardinal's liability and client's exclusive remedy for any claim arising, whether based in contract or tort, shall be limited to the amount paid by client for analyses. All claims, including those for negligence and any other cause whatsoever shall be deemed waived unless made in writing and received by Cardinal within thirty (30) days after completion of the applicable service. In no event shall Cardinal be liable for incidental or consequential damages, including, without limitation, business interruptions, loss of use, or loss of profits incurred by client, its subsidiaries, affiliates or successors arising out of or related to the performance of the services hereunder by Cardinal, regardless of whether such claim is based upon any of the above stated reasons or otherwise. Results relate only to the samples identified above. This report shall not be reproduced except in full with written approval of Cardinal Laboratories.



Celey D. Keene, Lab Director/Quality Manager

Analytical Results For:

BBC International, Inc.
Cliff Brunson
P.O. Box 805
Hobbs NM, 88241
Fax To: (575) 397-0397

Received:	07/30/2015	Sampling Date:	07/28/2015
Reported:	08/06/2015	Sampling Type:	Soil
Project Name:	HACKBERRY 6 FED COM #4H	Sampling Condition:	Cool & Intact
Project Number:	NONE GIVEN	Sample Received By:	Jodi Henson
Project Location:	EDDY COUNTY, NM		

Sample ID: SP1 @ 1' (H501981-02)

BTEX 8021B			mg/kg		Analyzed By: MS					
Analyte	Result	Reporting Limit	Analyzed	Method Blank	BS	% Recovery	True Value QC	RPD	Qualifier	
Benzene*	<0.050	0.050	07/31/2015	ND	1.98	99.2	2.00	3.64		
Toluene*	<0.050	0.050	07/31/2015	ND	2.02	101	2.00	4.60		
Ethylbenzene*	<0.050	0.050	07/31/2015	ND	2.17	108	2.00	5.97		
Total Xylenes*	<0.150	0.150	07/31/2015	ND	5.68	94.7	6.00	6.65		
Total BTEX	<0.300	0.300	07/31/2015	ND						

Surrogate: 4-Bromofluorobenzene (PIC) 118 % 85.6-137

Chloride, SM4500Cl-B		mg/kg		Analyzed By: AP					
Analyte	Result	Reporting Limit	Analyzed	Method Blank	BS	% Recovery	True Value QC	RPD	Qualifier
Chloride	1710	16.0	08/04/2015	ND	432	108	400	3.64	

TPH 8015M		mg/kg		Analyzed By: MS					
Analyte	Result	Reporting Limit	Analyzed	Method Blank	BS	% Recovery	True Value QC	RPD	Qualifier
GRO C6-C10	<10.0	10.0	07/31/2015	ND	202	101	200	3.18	
DRO >C10-C28	42.8	10.0	07/31/2015	ND	182	91.0	200	4.59	

Surrogate: 1-Chlorooctane 100 % 47.2-157

Surrogate: 1-Chlorooctadecane 125 % 52.1-176

Sample ID: SP1 @ 2' (H501981-03)

Chloride, SM4500Cl-B			mg/kg		Analyzed By: AP					
Analyte	Result	Reporting Limit	Analyzed	Method Blank	BS	% Recovery	True Value QC	RPD	Qualifier	
Chloride	1620	16.0	08/04/2015	ND	432	108	400	3.64		

Cardinal Laboratories

*=Accredited Analyte

PLEASE NOTE: Liability and Damages. Cardinal's liability and client's exclusive remedy for any claim arising, whether based in contract or tort, shall be limited to the amount paid by client for analyses. All claims, including those for negligence and any other cause whatsoever shall be deemed waived unless made in writing and received by Cardinal within thirty (30) days after completion of the applicable service. In no event shall Cardinal be liable for incidental or consequential damages, including, without limitation, business interruptions, loss of use, or loss of profits incurred by client, its subsidiaries, affiliates or successors arising out of or related to the performance of the services hereunder by Cardinal, regardless of whether such claim is based upon any of the above stated reasons or otherwise. Results relate only to the samples identified above. This report shall not be reproduced except in full with written approval of Cardinal Laboratories.



Celey D. Keene, Lab Director/Quality Manager

Analytical Results For:

BBC International, Inc.
Cliff Brunson
P.O. Box 805
Hobbs NM, 88241
Fax To: (575) 397-0397

Received: 07/30/2015
Reported: 08/06/2015
Project Name: HACKBERRY 6 FED COM #4H
Project Number: NONE GIVEN
Project Location: EDDY COUNTY, NM

Sampling Date: 07/28/2015
Sampling Type: Soil
Sampling Condition: Cool & Intact
Sample Received By: Jodi Henson

Sample ID: SP1 @ 3' (H501981-04)

Chloride, SM4500Cl-B		mg/kg		Analyzed By: AP						
Analyte	Result	Reporting Limit	Analyzed	Method Blank	BS	% Recovery	True Value QC	RPD	Qualifier	
Chloride	80.0	16.0	08/04/2015	ND	432	108	400	3.64		

Sample ID: SP1 @ 4' (H501981-05)

Chloride, SM4500Cl-B		mg/kg		Analyzed By: AP					
Analyte	Result	Reporting Limit	Analyzed	Method Blank	BS	% Recovery	True Value QC	RPD	Qualifier
Chloride	32.0	16.0	08/04/2015	ND	432	108	400	3.64	

Cardinal Laboratories

*=Accredited Analyte

PLEASE NOTE: Liability and Damages. Cardinal's liability and client's exclusive remedy for any claim arising, whether based in contract or tort, shall be limited to the amount paid by client for analyses. All claims, including those for negligence and any other cause whatsoever shall be deemed waived unless made in writing and received by Cardinal within thirty (30) days after completion of the applicable service. In no event shall Cardinal be liable for incidental or consequential damages, including, without limitation, business interruptions, loss of use, or loss of profits incurred by client, its subsidiaries, affiliates or successors arising out of or related to the performance of the services hereunder by Cardinal, regardless of whether such claim is based upon any of the above stated reasons or otherwise. Results relate only to the samples identified above. This report shall not be reproduced except in full with written approval of Cardinal Laboratories.



Celey D. Keene, Lab Director/Quality Manager

Analytical Results For:

BBC International, Inc.
Cliff Brunson
P.O. Box 805
Hobbs NM, 88241
Fax To: (575) 397-0397

Received:	07/30/2015	Sampling Date:	07/29/2015
Reported:	08/06/2015	Sampling Type:	Soil
Project Name:	HACKBERRY 6 FED COM #4H	Sampling Condition:	Cool & Intact
Project Number:	NONE GIVEN	Sample Received By:	Jodi Henson
Project Location:	EDDY COUNTY, NM		

Sample ID: SP2 @ SURFACE (H501981-06)

BTEX 8021B		mg/kg		Analyzed By: MS					
Analyte	Result	Reporting Limit	Analyzed	Method Blank	BS	% Recovery	True Value QC	RPD	Qualifier
Benzene*	<0.100	0.100	07/31/2015	ND	1.98	99.2	2.00	3.64	
Toluene*	2.62	0.100	07/31/2015	ND	2.02	101	2.00	4.60	
Ethylbenzene*	4.22	0.100	07/31/2015	ND	2.17	108	2.00	5.97	
Total Xylenes*	7.55	0.300	07/31/2015	ND	5.68	94.7	6.00	6.65	
Total BTEX	14.4	0.600	07/31/2015	ND					

Surrogate: 4-Bromofluorobenzene (PIC) 124 % 85.6-137

Chloride, SM4500Cl-B		mg/kg		Analyzed By: AP					
Analyte	Result	Reporting Limit	Analyzed	Method Blank	BS	% Recovery	True Value QC	RPD	Qualifier
Chloride	20400	16.0	08/04/2015	ND	432	108	400	3.64	

TPH 8015M		mg/kg		Analyzed By: MS						S-06
Analyte	Result	Reporting Limit	Analyzed	Method Blank	BS	% Recovery	True Value QC	RPD	Qualifier	
GRO C6-C10	227	100	07/31/2015	ND	202	101	200	3.18		
DRO >C10-C28	36800	100	07/31/2015	ND	182	91.0	200	4.59		

Surrogate: 1-Chlorooctane 138 % 47.2-157

Surrogate: 1-Chlorooctadecane 1620 % 52.1-176

Cardinal Laboratories

*=Accredited Analyte

PLEASE NOTE: Liability and Damages. Cardinal's liability and client's exclusive remedy for any claim arising, whether based in contract or tort, shall be limited to the amount paid by client for analyses. All claims, including those for negligence and any other cause whatsoever shall be deemed waived unless made in writing and received by Cardinal within thirty (30) days after completion of the applicable service. In no event shall Cardinal be liable for incidental or consequential damages, including, without limitation, business interruptions, loss of use, or loss of profits incurred by client, its subsidiaries, affiliates or successors arising out of or related to the performance of the services hereunder by Cardinal, regardless of whether such claim is based upon any of the above stated reasons or otherwise. Results relate only to the samples identified above. This report shall not be reproduced except in full with written approval of Cardinal Laboratories.



Celey D. Keene, Lab Director/Quality Manager

Analytical Results For:

BBC International, Inc.
Cliff Brunson
P.O. Box 805
Hobbs NM, 88241
Fax To: (575) 397-0397

Received:	07/30/2015	Sampling Date:	07/29/2015
Reported:	08/06/2015	Sampling Type:	Soil
Project Name:	HACKBERRY 6 FED COM #4H	Sampling Condition:	Cool & Intact
Project Number:	NONE GIVEN	Sample Received By:	Jodi Henson
Project Location:	EDDY COUNTY, NM		

Sample ID: SP2 @ 1' (H501981-07)

BTEX 8021B		mg/kg		Analyzed By: MS					
Analyte	Result	Reporting Limit	Analyzed	Method Blank	BS	% Recovery	True Value QC	RPD	Qualifier
Benzene*	<0.050	0.050	07/31/2015	ND	1.98	99.2	2.00	3.64	
Toluene*	<0.050	0.050	07/31/2015	ND	2.02	101	2.00	4.60	
Ethylbenzene*	<0.050	0.050	07/31/2015	ND	2.17	108	2.00	5.97	
Total Xylenes*	<0.150	0.150	07/31/2015	ND	5.68	94.7	6.00	6.65	
Total BTEX	<0.300	0.300	07/31/2015	ND					

Surrogate: 4-Bromofluorobenzene (PIL) 117 % 85.6-137

Chloride, SM4500Cl-B		mg/kg		Analyzed By: AP					
Analyte	Result	Reporting Limit	Analyzed	Method Blank	BS	% Recovery	True Value QC	RPD	Qualifier
Chloride	592	16.0	08/04/2015	ND	432	108	400	3.64	

TPH 8015M		mg/kg		Analyzed By: MS					
Analyte	Result	Reporting Limit	Analyzed	Method Blank	BS	% Recovery	True Value QC	RPD	Qualifier
GRO C6-C10	<10.0	10.0	07/31/2015	ND	202	101	200	3.18	
DRO >C10-C28	<10.0	10.0	07/31/2015	ND	182	91.0	200	4.59	

Surrogate: 1-Chlorooctane 102 % 47.2-157

Surrogate: 1-Chlorooctadecane 123 % 52.1-176

Sample ID: SP2 @ 2' (H501981-08)

Chloride, SM4500Cl-B		mg/kg		Analyzed By: AP					
Analyte	Result	Reporting Limit	Analyzed	Method Blank	BS	% Recovery	True Value QC	RPD	Qualifier
Chloride	576	16.0	08/05/2015	ND	432	108	400	3.77	

Cardinal Laboratories

*=Accredited Analyte

PLEASE NOTE: Liability and Damages. Cardinal's liability and client's exclusive remedy for any claim arising, whether based in contract or tort, shall be limited to the amount paid by client for analyses. All claims, including those for negligence and any other cause whatsoever shall be deemed waived unless made in writing and received by Cardinal within thirty (30) days after completion of the applicable service. In no event shall Cardinal be liable for incidental or consequential damages, including, without limitation, business interruptions, loss of use, or loss of profits incurred by client, its subsidiaries, affiliates or successors arising out of or related to the performance of the services hereunder by Cardinal, regardless of whether such claim is based upon any of the above stated reasons or otherwise. Results relate only to the samples identified above. This report shall not be reproduced except in full with written approval of Cardinal Laboratories.



Celey D. Keene, Lab Director/Quality Manager

Analytical Results For:

BBC International, Inc.
Cliff Brunson
P.O. Box 805
Hobbs NM, 88241
Fax To: (575) 397-0397

Received: 07/30/2015
Reported: 08/06/2015
Project Name: HACKBERRY 6 FED COM #4H
Project Number: NONE GIVEN
Project Location: EDDY COUNTY, NM

Sampling Date: 07/29/2015
Sampling Type: Soil
Sampling Condition: Cool & Intact
Sample Received By: Jodi Henson

Sample ID: SP2 @ 3' (H501981-09)

Chloride, SM4500CI-B		mg/kg		Analyzed By: AP					
Analyte	Result	Reporting Limit	Analyzed	Method Blank	BS	% Recovery	True Value QC	RPD	Qualifier
Chloride	64.0	16.0	08/05/2015	ND	432	108	400	3.77	

Sample ID: SP2 @ 4' (H501981-10)

Chloride, SM4500CI-B		mg/kg		Analyzed By: AP					
Analyte	Result	Reporting Limit	Analyzed	Method Blank	BS	% Recovery	True Value QC	RPD	Qualifier
Chloride	16.0	16.0	08/05/2015	ND	432	108	400	3.77	

Cardinal Laboratories

* = Accredited Analyte

PLEASE NOTE: Liability and Damages. Cardinal's liability and client's exclusive remedy for any claim arising, whether based in contract or tort, shall be limited to the amount paid by client for analyses. All claims, including those for negligence and any other cause whatsoever shall be deemed waived unless made in writing and received by Cardinal within thirty (30) days after completion of the applicable service. In no event shall Cardinal be liable for incidental or consequential damages, including, without limitation, business interruptions, loss of use, or loss of profits incurred by client, its subsidiaries, affiliates or successors arising out of or related to the performance of the services hereunder by Cardinal, regardless of whether such claim is based upon any of the above stated reasons or otherwise. Results relate only to the samples identified above. This report shall not be reproduced except in full with written approval of Cardinal Laboratories.



Celey D. Keene, Lab Director/Quality Manager

Analytical Results For:

BBC International, Inc.
Cliff Brunson
P.O. Box 805
Hobbs NM, 88241
Fax To: (575) 397-0397

Received:	07/30/2015	Sampling Date:	07/29/2015
Reported:	08/06/2015	Sampling Type:	Soil
Project Name:	HACKBERRY 6 FED COM #4H	Sampling Condition:	Cool & Intact
Project Number:	NONE GIVEN	Sample Received By:	Jodi Henson
Project Location:	EDDY COUNTY, NM		

Sample ID: SP3 @ SURFACE (H501981-11)

BTEX 8021B		mg/kg		Analyzed By: MS					
Analyte	Result	Reporting Limit	Analyzed	Method Blank	BS	% Recovery	True Value QC	RPD	Qualifier
Benzene*	<0.050	0.050	08/01/2015	ND	1.98	99.2	2.00	3.64	
Toluene*	0.209	0.050	08/01/2015	ND	2.02	101	2.00	4.60	
Ethylbenzene*	0.978	0.050	08/01/2015	ND	2.17	108	2.00	5.97	
Total Xylenes*	1.99	0.150	08/01/2015	ND	5.68	94.7	6.00	6.65	
Total BTEX	3.18	0.300	08/01/2015	ND					

Surrogate: 4-Bromofluorobenzene (PIC) 117 % 85.6-137

Chloride, SM4500Cl-B		mg/kg		Analyzed By: AP					
Analyte	Result	Reporting Limit	Analyzed	Method Blank	BS	% Recovery	True Value QC	RPD	Qualifier
Chloride	7520	16.0	08/05/2015	ND	432	108	400	3.77	

TPH 8015M		mg/kg		Analyzed By: MS						S-06
Analyte	Result	Reporting Limit	Analyzed	Method Blank	BS	% Recovery	True Value QC	RPD	Qualifier	
GRO C6-C10	122	100	07/31/2015	ND	202	101	200	3.18		
DRO >C10-C28	34500	100	07/31/2015	ND	182	91.0	200	4.59		

Surrogate: 1-Chlorooctane 148 % 47.2-157

Surrogate: 1-Chlorooctadecane 1420 % 52.1-176

Cardinal Laboratories

*=Accredited Analyte

PLEASE NOTE: Liability and Damages. Cardinal's liability and client's exclusive remedy for any claim arising, whether based in contract or tort, shall be limited to the amount paid by client for analyses. All claims, including those for negligence and any other cause whatsoever shall be deemed waived unless made in writing and received by Cardinal within thirty (30) days after completion of the applicable service. In no event shall Cardinal be liable for incidental or consequential damages, including, without limitation, business interruptions, loss of use, or loss of profits incurred by client, its subsidiaries, affiliates or successors arising out of or related to the performance of the services hereunder by Cardinal, regardless of whether such claim is based upon any of the above stated reasons or otherwise. Results relate only to the samples identified above. This report shall not be reproduced except in full with written approval of Cardinal Laboratories.



Celey D. Keene, Lab Director/Quality Manager

Analytical Results For:

BBC International, Inc.
Cliff Brunson
P.O. Box 805
Hobbs NM, 88241
Fax To: (575) 397-0397

Received:	07/30/2015	Sampling Date:	07/29/2015
Reported:	08/06/2015	Sampling Type:	Soil
Project Name:	HACKBERRY 6 FED COM #4H	Sampling Condition:	Cool & Intact
Project Number:	NONE GIVEN	Sample Received By:	Jodi Henson
Project Location:	EDDY COUNTY, NM		

Sample ID: SP3 @ 1' (H501981-12)

BTEX 8021B		mg/kg		Analyzed By: MS					
Analyte	Result	Reporting Limit	Analyzed	Method Blank	BS	% Recovery	True Value QC	RPD	Qualifier
Benzene*	<0.050	0.050	08/04/2015	ND	1.92	96.2	2.00	0.311	
Toluene*	<0.050	0.050	08/04/2015	ND	1.95	97.4	2.00	0.357	
Ethylbenzene*	<0.050	0.050	08/04/2015	ND	2.10	105	2.00	0.478	
Total Xylenes*	<0.150	0.150	08/04/2015	ND	5.55	92.4	6.00	0.104	
Total BTEX	<0.300	0.300	08/04/2015	ND					

Surrogate: 4-Bromofluorobenzene (PIC) 115 % 85.6-137

Chloride, SM4500Cl-B		mg/kg		Analyzed By: AP					
Analyte	Result	Reporting Limit	Analyzed	Method Blank	BS	% Recovery	True Value QC	RPD	Qualifier
Chloride	320	16.0	08/05/2015	ND	432	108	400	3.77	

TPH 8015M		mg/kg		Analyzed By: MS					
Analyte	Result	Reporting Limit	Analyzed	Method Blank	BS	% Recovery	True Value QC	RPD	Qualifier
GRO C6-C10	<10.0	10.0	07/31/2015	ND	202	101	200	3.18	
DRO >C10-C28	713	10.0	07/31/2015	ND	182	91.0	200	4.59	

Surrogate: 1-Chlorooctane 112 % 47.2-157

Surrogate: 1-Chlorooctadecane 142 % 52.1-176

Sample ID: SP3 @ 2' (H501981-13)

Chloride, SM4500Cl-B		mg/kg		Analyzed By: AP					
Analyte	Result	Reporting Limit	Analyzed	Method Blank	BS	% Recovery	True Value QC	RPD	Qualifier
Chloride	304	16.0	08/05/2015	ND	432	108	400	3.77	

Cardinal Laboratories

*=Accredited Analyte

PLEASE NOTE: Liability and Damages. Cardinal's liability and client's exclusive remedy for any claim arising, whether based in contract or tort, shall be limited to the amount paid by client for analyses. All claims, including those for negligence and any other cause whatsoever shall be deemed waived unless made in writing and received by Cardinal within thirty (30) days after completion of the applicable service. In no event shall Cardinal be liable for incidental or consequential damages, including, without limitation, business interruptions, loss of use, or loss of profits incurred by client, its subsidiaries, affiliates or successors arising out of or related to the performance of the services hereunder by Cardinal, regardless of whether such claim is based upon any of the above stated reasons or otherwise. Results relate only to the samples identified above. This report shall not be reproduced except in full with written approval of Cardinal Laboratories.



Celey D. Keene, Lab Director/Quality Manager

Analytical Results For:

BBC International, Inc.
Cliff Brunson
P.O. Box 805
Hobbs NM, 88241
Fax To: (575) 397-0397

Received:	07/30/2015	Sampling Date:	07/29/2015
Reported:	08/06/2015	Sampling Type:	Soil
Project Name:	HACKBERRY 6 FED COM #4H	Sampling Condition:	Cool & Intact
Project Number:	NONE GIVEN	Sample Received By:	Jodi Henson
Project Location:	EDDY COUNTY, NM		

Sample ID: SP3 @ 3' (H501981-14)

Chloride, SM4500Cl-B		mg/kg	Analyzed By: AP						
Analyte	Result	Reporting Limit	Analyzed	Method Blank	BS	% Recovery	True Value QC	RPD	Qualifier
Chloride	<16.0	16.0	08/05/2015	ND	432	108	400	3.77	

Sample ID: SP4 @ SURFACE (H501981-15)

BTEX 8021B		mg/kg	Analyzed By: MS						
Analyte	Result	Reporting Limit	Analyzed	Method Blank	BS	% Recovery	True Value QC	RPD	Qualifier
Benzene*	<0.050	0.050	08/04/2015	ND	1.92	96.2	2.00	0.311	
Toluene*	0.099	0.050	08/04/2015	ND	1.95	97.4	2.00	0.357	
Ethylbenzene*	0.665	0.050	08/04/2015	ND	2.10	105	2.00	0.478	
Total Xylenes*	1.36	0.150	08/04/2015	ND	5.55	92.4	6.00	0.104	
Total BTEX	2.13	0.300	08/04/2015	ND					

Surrogate: 4-Bromofluorobenzene (PIL) 132 % 85.6-137

Chloride, SM4500Cl-B		mg/kg	Analyzed By: AP						
Analyte	Result	Reporting Limit	Analyzed	Method Blank	BS	% Recovery	True Value QC	RPD	Qualifier
Chloride	24400	16.0	08/05/2015	ND	432	108	400	3.77	

TPH 8015M		mg/kg	Analyzed By: MS							S-06
Analyte	Result	Reporting Limit	Analyzed	Method Blank	BS	% Recovery	True Value QC	RPD	Qualifier	
GRO C6-C10	102	100	07/31/2015	ND	202	101	200	3.18		
DRO >C10-C28	46100	100	07/31/2015	ND	182	91.0	200	4.59		

Surrogate: 1-Chlorooctane 141 % 47.2-157

Surrogate: 1-Chlorooctadecane 1990 % 52.1-176

Cardinal Laboratories

*=Accredited Analyte

PLEASE NOTE: Liability and Damages. Cardinal's liability and client's exclusive remedy for any claim arising, whether based in contract or tort, shall be limited to the amount paid by client for analyses. All claims, including those for negligence and any other cause whatsoever shall be deemed waived unless made in writing and received by Cardinal within thirty (30) days after completion of the applicable service. In no event shall Cardinal be liable for incidental or consequential damages, including, without limitation, business interruptions, loss of use, or loss of profits incurred by client, its subsidiaries, affiliates or successors arising out of or related to the performance of the services hereunder by Cardinal, regardless of whether such claim is based upon any of the above stated reasons or otherwise. Results relate only to the samples identified above. This report shall not be reproduced except in full with written approval of Cardinal Laboratories.



Celey D. Keene, Lab Director/Quality Manager

Analytical Results For:

BBC International, Inc.
Cliff Brunson
P.O. Box 805
Hobbs NM, 88241
Fax To: (575) 397-0397

Received:	07/30/2015	Sampling Date:	07/29/2015
Reported:	08/06/2015	Sampling Type:	Soil
Project Name:	HACKBERRY 6 FED COM #4H	Sampling Condition:	Cool & Intact
Project Number:	NONE GIVEN	Sample Received By:	Jodi Henson
Project Location:	EDDY COUNTY, NM		

Sample ID: SP4 @ 1' (H501981-16)

BTEX 8021B		mg/kg		Analyzed By: MS					
Analyte	Result	Reporting Limit	Analyzed	Method Blank	BS	% Recovery	True Value QC	RPD	Qualifier
Benzene*	<0.050	0.050	08/04/2015	ND	1.92	96.2	2.00	0.311	
Toluene*	<0.050	0.050	08/04/2015	ND	1.95	97.4	2.00	0.357	
Ethylbenzene*	<0.050	0.050	08/04/2015	ND	2.10	105	2.00	0.478	
Total Xylenes*	<0.150	0.150	08/04/2015	ND	5.55	92.4	6.00	0.104	
Total BTEX	<0.300	0.300	08/04/2015	ND					

Surrogate: 4-Bromofluorobenzene (PIC) 113 % 85.6-137

Chloride, SM4500Cl-B		mg/kg		Analyzed By: AP					
Analyte	Result	Reporting Limit	Analyzed	Method Blank	BS	% Recovery	True Value QC	RPD	Qualifier
Chloride	160	16.0	08/05/2015	ND	432	108	400	3.77	

TPH 8015M		mg/kg		Analyzed By: MS					
Analyte	Result	Reporting Limit	Analyzed	Method Blank	BS	% Recovery	True Value QC	RPD	Qualifier
GRO C6-C10	<10.0	10.0	07/31/2015	ND	202	101	200	3.18	
DRO >C10-C28	<10.0	10.0	07/31/2015	ND	182	91.0	200	4.59	

Surrogate: 1-Chlorooctane 102 % 47.2-157

Surrogate: 1-Chlorooctadecane 103 % 52.1-176

Sample ID: SP4 @ 2' (H501981-17)

Chloride, SM4500Cl-B		mg/kg		Analyzed By: AP					
Analyte	Result	Reporting Limit	Analyzed	Method Blank	BS	% Recovery	True Value QC	RPD	Qualifier
Chloride	224	16.0	08/05/2015	ND	432	108	400	3.77	

Cardinal Laboratories

*=Accredited Analyte

PLEASE NOTE: Liability and Damages. Cardinal's liability and client's exclusive remedy for any claim arising, whether based in contract or tort, shall be limited to the amount paid by client for analyses. All claims, including those for negligence and any other cause whatsoever shall be deemed waived unless made in writing and received by Cardinal within thirty (30) days after completion of the applicable service. In no event shall Cardinal be liable for incidental or consequential damages, including, without limitation, business interruptions, loss of use, or loss of profits incurred by client, its subsidiaries, affiliates or successors arising out of or related to the performance of the services hereunder by Cardinal, regardless of whether such claim is based upon any of the above stated reasons or otherwise. Results relate only to the samples identified above. This report shall not be reproduced except in full with written approval of Cardinal Laboratories.



Celey D. Keene, Lab Director/Quality Manager

Analytical Results For:

BBC International, Inc.
Cliff Brunson
P.O. Box 805
Hobbs NM, 88241
Fax To: (575) 397-0397

Received:	07/30/2015	Sampling Date:	07/29/2015
Reported:	08/06/2015	Sampling Type:	Soil
Project Name:	HACKBERRY 6 FED COM #4H	Sampling Condition:	Cool & Intact
Project Number:	NONE GIVEN	Sample Received By:	Jodi Henson
Project Location:	EDDY COUNTY, NM		

Sample ID: SP4 @ 3' (H501981-18)

Chloride, SM4500Cl-B		mg/kg		Analyzed By: AP					
Analyte	Result	Reporting Limit	Analyzed	Method Blank	BS	% Recovery	True Value QC	RPD	Qualifier
Chloride	48.0	16.0	08/05/2015	ND	432	108	400	3.77	

Sample ID: SP5 @ SURFACE (H501981-19)

BTEX 8021B			mg/kg		Analyzed By: MS					
Analyte	Result	Reporting Limit	Analyzed	Method Blank	BS	% Recovery	True Value QC	RPD	Qualifier	
Benzene*	<0.050	0.050	08/04/2015	ND	1.92	96.2	2.00	0.311		
Toluene*	<0.050	0.050	08/04/2015	ND	1.95	97.4	2.00	0.357		
Ethylbenzene*	<0.050	0.050	08/04/2015	ND	2.10	105	2.00	0.478		
Total Xylenes*	<0.150	0.150	08/04/2015	ND	5.55	92.4	6.00	0.104		
Total BTEX	<0.300	0.300	08/04/2015	ND						

Surrogate: 4-Bromofluorobenzene (PIC) 109 % 85.6-137

Chloride, SM4500Cl-B			mg/kg		Analyzed By: AP					
Analyte	Result	Reporting Limit	Analyzed	Method Blank	BS	% Recovery	True Value QC	RPD	Qualifier	
Chloride	29600	16.0	08/05/2015	ND	432	108	400	3.77		

TPH 8015M		mg/kg		Analyzed By: MS				S-06	
Analyte	Result	Reporting Limit	Analyzed	Method Blank	BS	% Recovery	True Value QC	RPD	Qualifier
GRO C6-C10	<50.0	50.0	07/31/2015	ND	202	101	200	3.18	
DRO >C10-C28	3090	50.0	07/31/2015	ND	182	91.0	200	4.59	

Surrogate: 1-Chlorooctane 104 % 47.2-157

Surrogate: 1-Chlorooctadecane 215 % 52.1-176

Cardinal Laboratories

*=Accredited Analyte

PLEASE NOTE: Liability and Damages. Cardinal's liability and client's exclusive remedy for any claim arising, whether based in contract or tort, shall be limited to the amount paid by client for analyses. All claims, including those for negligence and any other cause whatsoever shall be deemed waived unless made in writing and received by Cardinal within thirty (30) days after completion of the applicable service. In no event shall Cardinal be liable for incidental or consequential damages, including, without limitation, business interruptions, loss of use, or loss of profits incurred by client, its subsidiaries, affiliates or successors arising out of or related to the performance of the services hereunder by Cardinal, regardless of whether such claim is based upon any of the above stated reasons or otherwise. Results relate only to the samples identified above. This report shall not be reproduced except in full with written approval of Cardinal Laboratories.



Celey D. Keene, Lab Director/Quality Manager

Analytical Results For:

BBC International, Inc.
Cliff Brunson
P.O. Box 805
Hobbs NM, 88241
Fax To: (575) 397-0397

Received:	07/30/2015	Sampling Date:	07/29/2015
Reported:	08/06/2015	Sampling Type:	Soil
Project Name:	HACKBERRY 6 FED COM #4H	Sampling Condition:	Cool & Intact
Project Number:	NONE GIVEN	Sample Received By:	Jodi Henson
Project Location:	EDDY COUNTY, NM		

Sample ID: SP5 @ 1' (H501981-20)

BTEX 8021B			mg/kg		Analyzed By: MS					
Analyte	Result	Reporting Limit	Analyzed	Method Blank	BS	% Recovery	True Value QC	RPD	Qualifier	
Benzene*	<0.050	0.050	08/04/2015	ND	1.92	96.2	2.00	0.311		
Toluene*	<0.050	0.050	08/04/2015	ND	1.95	97.4	2.00	0.357		
Ethylbenzene*	<0.050	0.050	08/04/2015	ND	2.10	105	2.00	0.478		
Total Xylenes*	<0.150	0.150	08/04/2015	ND	5.55	92.4	6.00	0.104		
Total BTEX	<0.300	0.300	08/04/2015	ND						

Surrogate: 4-Bromofluorobenzene (PIC) 112 % 85.6-137

Chloride, SM4500Cl-B			mg/kg							Analyzed By: AP	
Analyte	Result	Reporting Limit	Analyzed	Method Blank	BS	% Recovery	True Value QC	RPD	Qualifier		
Chloride	3800	16.0	08/05/2015	ND	432	108	400	3.77			

TPH 8015M			mg/kg							Analyzed By: MS	
Analyte	Result	Reporting Limit	Analyzed	Method Blank	BS	% Recovery	True Value QC	RPD	Qualifier		
GRO C6-C10	<10.0	10.0	07/31/2015	ND	202	101	200	3.18			
DRO >C10-C28	16.9	10.0	07/31/2015	ND	182	91.0	200	4.59			

Surrogate: 1-Chlorooctane 104 % 47.2-157

Surrogate: 1-Chlorooctadecane 111 % 52.1-176

Sample ID: SP5 @ 2' (H501981-21)

Chloride, SM4500Cl-B			mg/kg							Analyzed By: AP	
Analyte	Result	Reporting Limit	Analyzed	Method Blank	BS	% Recovery	True Value QC	RPD	Qualifier		
Chloride	736	16.0	08/05/2015	ND	432	108	400	3.77			

Cardinal Laboratories

*=Accredited Analyte

PLEASE NOTE: Liability and Damages. Cardinal's liability and client's exclusive remedy for any claim arising, whether based in contract or tort, shall be limited to the amount paid by client for analyses. All claims, including those for negligence and any other cause whatsoever shall be deemed waived unless made in writing and received by Cardinal within thirty (30) days after completion of the applicable service. In no event shall Cardinal be liable for incidental or consequential damages, including, without limitation, business interruptions, loss of use, or loss of profits incurred by client, its subsidiaries, affiliates or successors arising out of or related to the performance of the services hereunder by Cardinal, regardless of whether such claim is based upon any of the above stated reasons or otherwise. Results relate only to the samples identified above. This report shall not be reproduced except in full with written approval of Cardinal Laboratories.



Celey D. Keene, Lab Director/Quality Manager

Analytical Results For:

BBC International, Inc.
Cliff Brunson
P.O. Box 805
Hobbs NM, 88241
Fax To: (575) 397-0397

Received:	07/30/2015	Sampling Date:	07/29/2015
Reported:	08/06/2015	Sampling Type:	Soil
Project Name:	HACKBERRY 6 FED COM #4H	Sampling Condition:	Cool & Intact
Project Number:	NONE GIVEN	Sample Received By:	Jodi Henson
Project Location:	EDDY COUNTY, NM		

Sample ID: SP5 @ 3' (H501981-22)

Chloride, SM4500Cl-B	mg/kg	Analyzed By: AP							
Analyte	Result	Reporting Limit	Analyzed	Method Blank	BS	% Recovery	True Value QC	RPD	Qualifier
Chloride	576	16.0	08/05/2015	ND	432	108	400	3.77	

Sample ID: SP5 @ 4' (H501981-23)

Chloride, SM4500Cl-B	mg/kg	Analyzed By: AP							
Analyte	Result	Reporting Limit	Analyzed	Method Blank	BS	% Recovery	True Value QC	RPD	Qualifier
Chloride	224	16.0	08/05/2015	ND	432	108	400	3.77	

Sample ID: SP5 @ 5' (H501981-24)

Chloride, SM4500Cl-B	mg/kg	Analyzed By: AP							
Analyte	Result	Reporting Limit	Analyzed	Method Blank	BS	% Recovery	True Value QC	RPD	Qualifier
Chloride	192	16.0	08/05/2015	ND	432	108	400	3.77	

Sample ID: SP5 @ 6' (H501981-25)

Chloride, SM4500Cl-B	mg/kg	Analyzed By: AP							
Analyte	Result	Reporting Limit	Analyzed	Method Blank	BS	% Recovery	True Value QC	RPD	Qualifier
Chloride	256	16.0	08/05/2015	ND	432	108	400	3.77	

Cardinal Laboratories

*=Accredited Analyte

PLEASE NOTE: Liability and Damages. Cardinal's liability and client's exclusive remedy for any claim arising, whether based in contract or tort, shall be limited to the amount paid by client for analyses. All claims, including those for negligence and any other cause whatsoever shall be deemed waived unless made in writing and received by Cardinal within thirty (30) days after completion of the applicable service. In no event shall Cardinal be liable for incidental or consequential damages, including, without limitation, business interruptions, loss of use, or loss of profits incurred by client, its subsidiaries, affiliates or successors arising out of or related to the performance of the services hereunder by Cardinal, regardless of whether such claim is based upon any of the above stated reasons or otherwise. Results relate only to the samples identified above. This report shall not be reproduced except in full with written approval of Cardinal Laboratories.



Celey D. Keene, Lab Director/Quality Manager

Analytical Results For:

BBC International, Inc.
Cliff Brunson
P.O. Box 805
Hobbs NM, 88241
Fax To: (575) 397-0397

Received:	07/30/2015	Sampling Date:	07/29/2015
Reported:	08/06/2015	Sampling Type:	Soil
Project Name:	HACKBERRY 6 FED COM #4H	Sampling Condition:	Cool & Intact
Project Number:	NONE GIVEN	Sample Received By:	Jodi Henson
Project Location:	EDDY COUNTY, NM		

Sample ID: SP6 @ SURFACE (H501981-26)

BTEX 8021B			mg/kg		Analyzed By: MS				
Analyte	Result	Reporting Limit	Analyzed	Method Blank	BS	% Recovery	True Value QC	RPD	Qualifier
Benzene*	<0.050	0.050	08/04/2015	ND	1.92	96.2	2.00	0.311	
Toluene*	<0.050	0.050	08/04/2015	ND	1.95	97.4	2.00	0.357	
Ethylbenzene*	<0.050	0.050	08/04/2015	ND	2.10	105	2.00	0.478	
Total Xylenes*	<0.150	0.150	08/04/2015	ND	5.55	92.4	6.00	0.104	
Total BTEX	<0.300	0.300	08/04/2015	ND					

Surrogate: 4-Bromofluorobenzene (PIE) 111 % 85.6-137

Chloride, SM4500Cl-B			mg/kg		Analyzed By: AP				
Analyte	Result	Reporting Limit	Analyzed	Method Blank	BS	% Recovery	True Value QC	RPD	Qualifier
Chloride	28000	16.0	08/05/2015	ND	432	108	400	3.77	

TPH 8015M			mg/kg		Analyzed By: MS					S-06
Analyte	Result	Reporting Limit	Analyzed	Method Blank	BS	% Recovery	True Value QC	RPD	Qualifier	
GRO C6-C10	<50.0	50.0	07/31/2015	ND	202	101	200	3.18		
DRO >C10-C28	2430	50.0	07/31/2015	ND	182	91.0	200	4.59		

Surrogate: 1-Chlorooctane 94.6 % 47.2-157

Surrogate: 1-Chlorooctadecane 180 % 52.1-176

Cardinal Laboratories

*=Accredited Analyte

PLEASE NOTE: Liability and Damages. Cardinal's liability and client's exclusive remedy for any claim arising, whether based in contract or tort, shall be limited to the amount paid by client for analyses. All claims, including those for negligence and any other cause whatsoever shall be deemed waived unless made in writing and received by Cardinal within thirty (30) days after completion of the applicable service. In no event shall Cardinal be liable for incidental or consequential damages, including, without limitation, business interruptions, loss of use, or loss of profits incurred by client, its subsidiaries, affiliates or successors arising out of or related to the performance of the services hereunder by Cardinal, regardless of whether such claim is based upon any of the above stated reasons or otherwise. Results relate only to the samples identified above. This report shall not be reproduced except in full with written approval of Cardinal Laboratories.



Celey D. Keene, Lab Director/Quality Manager

Analytical Results For:

BBC International, Inc.
Cliff Brunson
P.O. Box 805
Hobbs NM, 88241
Fax To: (575) 397-0397

Received:	07/30/2015	Sampling Date:	07/29/2015
Reported:	08/06/2015	Sampling Type:	Soil
Project Name:	HACKBERRY 6 FED COM #4H	Sampling Condition:	Cool & Intact
Project Number:	NONE GIVEN	Sample Received By:	Jodi Henson
Project Location:	EDDY COUNTY, NM		

Sample ID: SP6 @ 1' (H501981-27)

BTEX 8021B			mg/kg		Analyzed By: MS				
Analyte	Result	Reporting Limit	Analyzed	Method Blank	BS	% Recovery	True Value QC	RPD	Qualifier
Benzene*	<0.050	0.050	08/04/2015	ND	1.92	96.2	2.00	0.311	
Toluene*	<0.050	0.050	08/04/2015	ND	1.95	97.4	2.00	0.357	
Ethylbenzene*	<0.050	0.050	08/04/2015	ND	2.10	105	2.00	0.478	
Total Xylenes*	<0.150	0.150	08/04/2015	ND	5.55	92.4	6.00	0.104	
Total BTEX	<0.300	0.300	08/04/2015	ND					

Surrogate: 4-Bromofluorobenzene (PIC) 110 % 85.6-137

Chloride, SM4500CI-B			mg/kg		Analyzed By: AP				
Analyte	Result	Reporting Limit	Analyzed	Method Blank	BS	% Recovery	True Value QC	RPD	Qualifier
Chloride	3400	16.0	08/05/2015	ND	432	108	400	3.77	

TPH 8015M			mg/kg		Analyzed By: MS				
Analyte	Result	Reporting Limit	Analyzed	Method Blank	BS	% Recovery	True Value QC	RPD	Qualifier
GRO C6-C10	<10.0	10.0	07/31/2015	ND	202	101	200	3.18	
DRO >C10-C28	19.4	10.0	07/31/2015	ND	182	91.0	200	4.59	

Surrogate: 1-Chlorooctane 99.4 % 47.2-157

Surrogate: 1-Chlorooctadecane 106 % 52.1-176

Sample ID: SP6 @ 2' (H501981-28)

Chloride, SM4500CI-B			mg/kg		Analyzed By: AP				
Analyte	Result	Reporting Limit	Analyzed	Method Blank	BS	% Recovery	True Value QC	RPD	Qualifier
Chloride	704	16.0	08/03/2015	ND	400	100	400	3.92	

Cardinal Laboratories

*=Accredited Analyte

PLEASE NOTE: Liability and Damages. Cardinal's liability and client's exclusive remedy for any claim arising, whether based in contract or tort, shall be limited to the amount paid by client for analyses. All claims, including those for negligence and any other cause whatsoever shall be deemed waived unless made in writing and received by Cardinal within thirty (30) days after completion of the applicable service. In no event shall Cardinal be liable for incidental or consequential damages, including, without limitation, business interruptions, loss of use, or loss of profits incurred by client, its subsidiaries, affiliates or successors arising out of or related to the performance of the services hereunder by Cardinal, regardless of whether such claim is based upon any of the above stated reasons or otherwise. Results relate only to the samples identified above. This report shall not be reproduced except in full with written approval of Cardinal Laboratories.



Celey D. Keene, Lab Director/Quality Manager

Analytical Results For:

BBC International, Inc.
Cliff Brunson
P.O. Box 805
Hobbs NM, 88241
Fax To: (575) 397-0397

Received: 07/30/2015
Reported: 08/06/2015
Project Name: HACKBERRY 6 FED COM #4H
Project Number: NONE GIVEN
Project Location: EDDY COUNTY, NM

Sampling Date: 07/29/2015
Sampling Type: Soil
Sampling Condition: Cool & Intact
Sample Received By: Jodi Henson

Sample ID: SP6 @ 3' (H501981-29)

Chloride, SM4500Cl-B		mg/kg		Analyzed By: AP					
Analyte	Result	Reporting Limit	Analyzed	Method Blank	BS	% Recovery	True Value QC	RPD	Qualifier
Chloride	704	16.0	08/03/2015	ND	400	100	400	3.92	

Sample ID: SP6 @ 4' (H501981-30)

Chloride, SM4500Cl-B		mg/kg		Analyzed By: AP					
Analyte	Result	Reporting Limit	Analyzed	Method Blank	BS	% Recovery	True Value QC	RPD	Qualifier
Chloride	320	16.0	08/03/2015	ND	400	100	400	3.92	

Sample ID: SP6 @ 5' (H501981-31)

Chloride, SM4500Cl-B		mg/kg		Analyzed By: AP					
Analyte	Result	Reporting Limit	Analyzed	Method Blank	BS	% Recovery	True Value QC	RPD	Qualifier
Chloride	224	16.0	08/03/2015	ND	400	100	400	3.92	

Sample ID: SP6 @ 6' (H501981-32)

Chloride, SM4500Cl-B		mg/kg		Analyzed By: AP					
Analyte	Result	Reporting Limit	Analyzed	Method Blank	BS	% Recovery	True Value QC	RPD	Qualifier
Chloride	208	16.0	08/03/2015	ND	400	100	400	3.92	

Cardinal Laboratories

*=Accredited Analyte

PLEASE NOTE: Liability and Damages. Cardinal's liability and client's exclusive remedy for any claim arising, whether based in contract or tort, shall be limited to the amount paid by client for analyses. All claims, including those for negligence and any other cause whatsoever shall be deemed waived unless made in writing and received by Cardinal within thirty (30) days after completion of the applicable service. In no event shall Cardinal be liable for incidental or consequential damages, including, without limitation, business interruptions, loss of use, or loss of profits incurred by client, its subsidiaries, affiliates or successors arising out of or related to the performance of the services hereunder by Cardinal, regardless of whether such claim is based upon any of the above stated reasons or otherwise. Results relate only to the samples identified above. This report shall not be reproduced except in full with written approval of Cardinal Laboratories.



Celey D. Keene, Lab Director/Quality Manager

Notes and Definitions

S-06	The recovery of this surrogate is outside control limits due to sample dilution required from high analyte concentration and/or matrix interference's.
ND	Analyte NOT DETECTED at or above the reporting limit
RPD	Relative Percent Difference
**	Samples not received at proper temperature of 6°C or below.
***	Insufficient time to reach temperature.
-	Chloride by SM4500Cl-B does not require samples be received at or below 6°C Samples reported on an as received basis (wet) unless otherwise noted on report

Cardinal Laboratories

*=Accredited Analyte

PLEASE NOTE: Liability and Damages. Cardinal's liability and client's exclusive remedy for any claim arising, whether based in contract or tort, shall be limited to the amount paid by client for analyses. All claims, including those for negligence and any other cause whatsoever shall be deemed waived unless made in writing and received by Cardinal within thirty (30) days after completion of the applicable service. In no event shall Cardinal be liable for incidental or consequential damages, including, without limitation, business interruptions, loss of use, or loss of profits incurred by client, its subsidiaries, affiliates or successors arising out of or related to the performance of the services hereunder by Cardinal, regardless of whether such claim is based upon any of the above stated reasons or otherwise. Results relate only to the samples identified above. This report shall not be reproduced except in full with written approval of Cardinal Laboratories.



Celey D. Keene, Lab Director/Quality Manager



ARDINAL LABORATORIES

101 East Marland, Hobbs, NM 88240
(505) 393-2326 FAX (505) 393-2476

CHAIN-OF-CUSTODY AND ANALYSIS REQUEST

2 of 4

Company Name: BBC International, Inc.		P.O. #:		BILL TO													
Project Manager: Cliff Brunson		Company:		ANALYSIS REQUEST													
Address: P.O. Box 805		Attn:															
City: Hobbs		Address:															
State: NM Zip: 88241		City:															
Phone #: 575-397-6388		State:															
Fax #: 575-397-0397		Zip:															
Project #:		Project Owner: Oxy															
Project Name: Hackberry 6 Fed Com #4H		Phone #:															
Project Location: Eddy County, NM		Fax #:															
Sampler Name: Price Brunson																	
FOR LAB USE ONLY																	
Lab I.D.	Sample I.D.	(G)RAB OR (C)OMP.	# CONTAINERS	MATRIX			PRESERV			SAMPLING							
				GROUNDWATER	WASTEWATER	SOIL	OIL	SLUDGE	OTHER :	ACID/BASE:	ICE / COOL	OTHER :	DATE	TIME	CI	BTEX	TDH
H501981	SP3 @ SURFACE	G	1										7/29/15	11:05 AM			
11	SP3 @ 1'	G	1										7/29/15	11:15 AM			
12	SP3 @ 2'	G	1										7/29/15	11:20 AM			
13	SP3 @ 3'	G	1										7/29/15	11:30 AM			
14	SP4 @ SURFACE	G	1										7/29/15	11:50 AM			
15	SP4 @ 1'	G	1										7/29/15	1:10 PM			
16	SP4 @ 2'	G	1										7/29/15	1:20 PM			
17	SP4 @ 3'	G	1										7/29/15	1:40 PM			
18	SP5 @ SURFACE	G	1										7/29/15	1:50 PM			
19	SP5 @ 1'	G	1										7/29/15	2:00 PM			
<small>PLEASE NOTE: Liability and Damages: Cardinal's liability and client's exclusive remedy for any claim arising whether based in contract or tort, shall be limited to the amount paid by the client for the analysis. All claims, including those for negligence and any other cause whatsoever shall be deemed waived unless made in writing and received by Cardinal within 30 days after completion of the applicable service. In no event shall Cardinal be liable for incidental or consequential damages, including without limitation, business interruptions, loss of use, or loss of profits incurred by client, its subsidiaries, affiliates or successors arising out of or related to the performance of services hereunder by Cardinal, regardless of whether such claim is based upon any of the above stated reasons or otherwise.</small>																	
Relinquished By:	Date: 7/30/15	Received By:															
Relinquished By:	Date: 7/30/15	Received By:															
Delivered By: (Circle One)	Sample Condition	CHECKED BY:															
Sampler - UPS - Bus - Other:	Cool <input checked="" type="checkbox"/> Intact <input checked="" type="checkbox"/>	(Initials)															
	No <input type="checkbox"/> Yes <input checked="" type="checkbox"/>																

+ Cardinal cannot accept verbal changes. Please fax written changes to 505-393-2476

#54

ORDINAL LABORATORIES

101 East Marland, Hobbs, NM 88240
(505) 393-2326 FAX (505) 393-2476

CHAIN-OF-CUSTODY AND ANALYSIS REQUEST

(505) 393-2326 FAX (505) 393-2476

BILL TO

ANALYSIS REQUEST

Company Name: BBC International, Inc.

Project Manager: Cliff Brunson

Address: P.O. Box 805

City: Hobbs State: NM Zip: 88241

Phone #: 575-397-6388 Fax #: 575-397-0397

Project #: Project Owner: Oxy

Project Name: Hackberry 6 Fed Com #4H

Project Location: Eddy County, NM

Sample Name: Price Brunson

FOR LAB USE ONLY

Lab I.D. Sample I.D.

#501941

SP6 @ 5'

SP6 @ 6'

(G)RAB OR (C)OMP.

CONTAINERS

GROUNDWATER

WASTEWATER

SOIL

OIL

SLUDGE

OTHER :

ACID/BASE:

ICE / COOL

OTHER :

DATE TIME

7/29/15 3:30 PM

7/29/15 3:40 PM

MATRIX

PRESERV

SAMPLING

P.O. #:

Company:

Attn:

Address:

City:

State: Zip:

Phone #:

Fax #:

PLEASE NOTE: Liability and Damages. Cardinal's liability and client's exclusive remedy for any claim arising whether based in contract or tort, shall be limited to the amount paid by the client for the analyses. All claims, including those for negligence and any other cause whatsoever shall be deemed waived unless made in writing and received by Cardinal within 30 days after completion of the applicable service. In no event shall Cardinal be liable for incidental or consequential damages, including without limitation, business interruptions, loss of use, or loss of profits incurred by client, its subsidiaries, affiliates or successors arising out of or related to the performance of services hereunder by Cardinal, regardless of whether such claim is based upon any of the above stated reasons or otherwise.

Relinquished By: Date: 7/30/15 Received By: Time: 11:50 AM

Relinquished By: Date: Received By: Time:

Delivered By: (Circle One)

Sampler - UPS - Bus - Other:

Sample Condition

Cool Intact

Yes Yes No No

CHECKED BY: (Initials)

CHC

REMARKS: Phone Result: Yes No Add'l Phone #: Fax Result: Yes No Add'l Fax #:

Kathy Purvis

From: Cliff Brunson <cbrunson@bbcinternational.com>
Sent: Saturday, September 26, 2015 2:08 PM
To: Mike Bratcher; Shelly Tucker
Cc: Heather Patterson; Dusty Wilson; Ken Swinney; Jennifer Gilkey; Kathy Purvis
Subject: OXY - Hackberry 6 Fed Com #4H - Remediation Plan
Attachments: Remediation Packet, Hackberry 6 Fed Com #4H.pdf

Mike,

This e-mail is to confirm our discussion concerning the remediation plan for the Oxy Hackberry 6 Fed Com #4H. I have attached the information packet that we used in our discussion with a cover page describing the remediation plan that we agreed upon.

Shelly,

I am requesting BLM approval for the attached remediation plan for this site. Mike Bratcher has agreed to this plan already.

If both of you would please reply back via e-mail with your concurrence on this plan, it would be greatly appreciated.

Thanks, Cliff

Cliff P. Brunson, CEI, CRS
President
BBC International, Inc.
World-Wide Environmental Specialists
Mailing Address:
P. O. Box 805
Hobbs, NM 88241-0805 USA
Shipping Address:
1324 W. Marland St.
Hobbs, NM 88240 USA
Phone: (575) 397-6388
Fax: (575) 397-0397
E-Mail: cbrunson@bbcinternational.com

Confidentiality Notice: This electronic transmission (and any attached documents) is intended only for the person(s) to whom it is addressed and may contain information that is privileged, confidential, or otherwise protected from disclosure. If you have received this transmission in error, please immediately notify the sender by e-mail or by telephone call to (575) 397-6388 for handling instructions. Any disclosure or distribution of the contents of this transmission by anyone other than the named recipient(s) is strictly prohibited.



