

Bratcher, Mike, EMNRD

From: Bratcher, Mike, EMNRD
Sent: Tuesday, October 10, 2017 12:02 PM
To: Christine Alderman; Weaver, Crystal, EMNRD; Tucker, Shelly
Subject: RE: [External] Re: FW: Marquardt Fed 12 (API 30-015-41850)

RE: Cimarex * Marquardt 12H * 2RP-4030 * DOR: 10/12/16

Christine,

Your proposal for deferment of the above referenced release is under consideration, with the following:

OCD requests a boring be installed in an approximate area south of AH-5 and AH-6 to assess actual depth and quality of groundwater at this site. Boring is to be advanced to a minimum of 60' bgs unless groundwater is encountered at shallower depth. If groundwater is not encountered shallower than 60', your request for deferment will be re-evaluated. Federal sites will require like approval from BLM. Please advise once this boring has been scheduled.

If you have any questions or concerns, please contact me.

Mike Bratcher
NMOCD District 2
811 South First Street
Artesia, NM 88210
575-748-1283 Ext 108

OCD approval does not relieve the operator of liability should their operations fail to adequately investigate and remediate contamination that may pose a threat to ground water, surface water, human health or the environment. In addition, OCD approval does not relieve the operator of responsibility for compliance with any other federal, state, local laws and/or regulations.

From: Christine Alderman [mailto:calderman@cimarex.com]
Sent: Tuesday, October 3, 2017 11:51 AM
To: Weaver, Crystal, EMNRD <Crystal.Weaver@state.nm.us>; Tucker, Shelly <stucker@blm.gov>
Cc: Bratcher, Mike, EMNRD <mike.bratcher@state.nm.us>
Subject: RE: [External] Re: FW: Marquardt Fed 12 (API 30-015-41850)

Crystal/Shelly,

Please find attached the work plan for the above mentioned location.

I will provide a complete update on all projects tomorrow when I am in the office.

Please let me know if you have any questions.

Respectfully,

Christine Alderman

Cimarex Energy Co.



ESH Supervisor – Permian Basin
Midland TX
Cell – 432.853.7059

From: Weaver, Crystal, EMNRD [<mailto:Crystal.Weaver@state.nm.us>]
Sent: Tuesday, October 03, 2017 12:30 PM
To: Tucker, Shelly <stucker@blm.gov>; Christine Alderman <calderman@cimarex.com>
Cc: Bratcher, Mike, EMNRD <mike.bratcher@state.nm.us>
Subject: RE: [External] Re: FW: Marquardt Fed 12 (API 30-015-41850)

Cimarex * Marquardt Federal 12H * 30-015-41850 * 2RP-4030 * DOR 10/12/16

Christine,

OCD concurs with BLM's request for an update on this dated release. Back in December 2016 we also had to request that you all send us the initial C-141 cause that was never sent to us. Please be prompt with your response in updating us on the status of this release or this case along with quite a few others will be referred to our Santa Fe Compliance team for further pursuit of action.

Thank you,

Crystal Weaver

Environmental Specialist
OCD – Artesia District II
811 S. 1st Street
Artesia, NM 88210
Office: 575-748-1283 ext. 101
Cell: 575-840-5963
Fax: 575-748-9720

From: Tucker, Shelly [<mailto:stucker@blm.gov>]
Sent: Thursday, September 28, 2017 11:47 AM
To: Christine Alderman <calderman@cimarex.com>
Cc: Weaver, Crystal, EMNRD <Crystal.Weaver@state.nm.us>; Bratcher, Mike, EMNRD <mike.bratcher@state.nm.us>
Subject: Re: [External] Re: FW: Marquardt Fed 12 (API 30-015-41850)

Christine,

BLM is requesting an update on this release dated 10.12.2016.

If you have any questions or concerns, please do not hesitate to contact me.

Sincerely,

Shelly J Tucker

Environmental Protection Specialist
O&G Spill/Release Coordinator

Bureau of Land Management
620 E. Greene St
Carlsbad, NM 88220

575.234.5905 - Direct
575.361.0084 - Cellular
575.234.6235 - Emergency Spill Number

stucker@blm.gov

The **BLM acceptance/approval does not** relieve the operator of liability should their operations have failed to adequately investigate and remediate contamination that may pose a threat to groundwater, surface water, human health or the environment or if the location fails to reclaim properly. In such an event that the location does not revegetate, or future issues with contaminants are encountered, the operator will be asked to address the issues until the contaminant issues are fully mitigated and the location is successfully reclaimed. In addition, BLM approval does not relieve the operator of responsibility for compliance with any other federal, state or local laws/regulations.

Confidentiality Warning: This message along with any attachments are intended only for use of the individual or entity to which it is addressed and may contain information that is privileged or confidential and exempt from disclosure under applicable law. If the reader of this message is not the intended recipient or the employee or agent responsible for delivering this message to the intended recipient, you are hereby notified that any dissemination, distribution, or copying of this communication is strictly prohibited. If you have received this communication in error, please notify the sender immediately.

On Thu, Oct 13, 2016 at 9:20 AM, Christine Alderman <calderman@cimarex.com> wrote:

Here is the C-141.

Christine Alderman

Cimarex Energy Co.



ESH Supervisor – Permian Basin

Midland TX

Cell – 432.853.7059

From: Christine Alderman
Sent: Thursday, October 13, 2016 10:03 AM
To: 'Tucker, Shelly' <stucker@blm.gov>
Subject: RE: [External] Re: FW: Marquardt Fed 12 (API 30-015-41850)

Thank you!

Christine Alderman

Cimarex Energy Co.



ESH Supervisor – Permian Basin

Midland TX

Cell – 432.853.7059

From: Tucker, Shelly [<mailto:stucker@blm.gov>]
Sent: Thursday, October 13, 2016 9:57 AM
To: Christine Alderman <calderman@cimarex.com>
Subject: [External] Re: FW: Marquardt Fed 12 (API 30-015-41850)

Christine,

I do not have an issue with your initial plan to address this impact. Thanks!

If you have any questions or concerns, please do not hesitate to contact me.

Sincerely,

Shelly J Tucker

Environmental Protection Specialist

O&G Spill/Release Coordinator

Bureau of Land Management

620 E. Greene St

Carlsbad, NM 88220

575.234.5905 - Direct

575.361.0084 - Cellular

575.234.6235 - Emergency Spill Number

stucker@blm.gov

The **BLM acceptance/approval does not** relieve the operator of liability should their operations have failed to adequately investigate and remediate contamination that may pose a threat to groundwater, surface water, human health or the environment or if the location fails to reclaim properly. In such an event that the location does not revegetate, or future issues with contaminants are encountered, the operator will be asked to address the issues until the contaminant issues are fully mitigated and the location is successfully reclaimed. In addition, BLM approval does not relieve the operator of responsibility for compliance with any other federal, state or local laws/regulations.

Confidentiality Warning: This message along with any attachments are intended only for use of the individual or entity to which it is addressed and may contain information that is privileged or confidential and exempt from disclosure under applicable law. If the reader of this message is not the intended recipient or the employee or agent responsible for delivering this message to the intended recipient, you are hereby notified that any dissemination, distribution, or copying of this communication is strictly prohibited. If you have received this communication in error, please notify the sender immediately.

On Thu, Oct 13, 2016 at 8:47 AM, Amos, James <jamos@blm.gov> wrote:

----- Forwarded message -----

From: **Christine Alderman** <calderman@cimarex.com>
Date: Thu, Oct 13, 2016 at 8:27 AM
Subject: FW: Marquardt Fed 12 (API 30-015-41850)
To: "Amos, James A (jamoss@blm.gov)" <jamoss@blm.gov>

I am sending this to you since Randy is out of the office for a few weeks.

Christine Alderman

Cimarex Energy Co.



ESH Supervisor – Permian Basin

Midland TX

Cell – 432.853.7059

From: Christine Alderman
Sent: Wednesday, October 12, 2016 10:48 AM
To: 'Pair, Randal' <rpairs@blm.gov>; Patterson, Heather, EMNRD (Heather.Patterson@state.nm.us)
<Heather.Patterson@state.nm.us>
Subject: Marquardt Fed 12 (API 30-015-41850)

Randy/Heather,

This morning we discovered a leak at the above named location. Approximately 40 bbls of produced water was released from a faulty 4" check valve. The valve has been replaced and we are in the process of recovering fluids.

The fluids followed the ROW and is approximately 1' wide for 500 yards, then pools up. We are planning to go in with a hydrovac and get the impacted soils up as quickly as possible before they go deeper. We will then go back and sample.

Please let me know if either of you have any issues with this. Thanks!

Please see yellow line on map below.

Christine Alderman

Cimarex Energy Co.



ESH Supervisor – Permian Basin

Midland TX

Cell – 432.853.7059

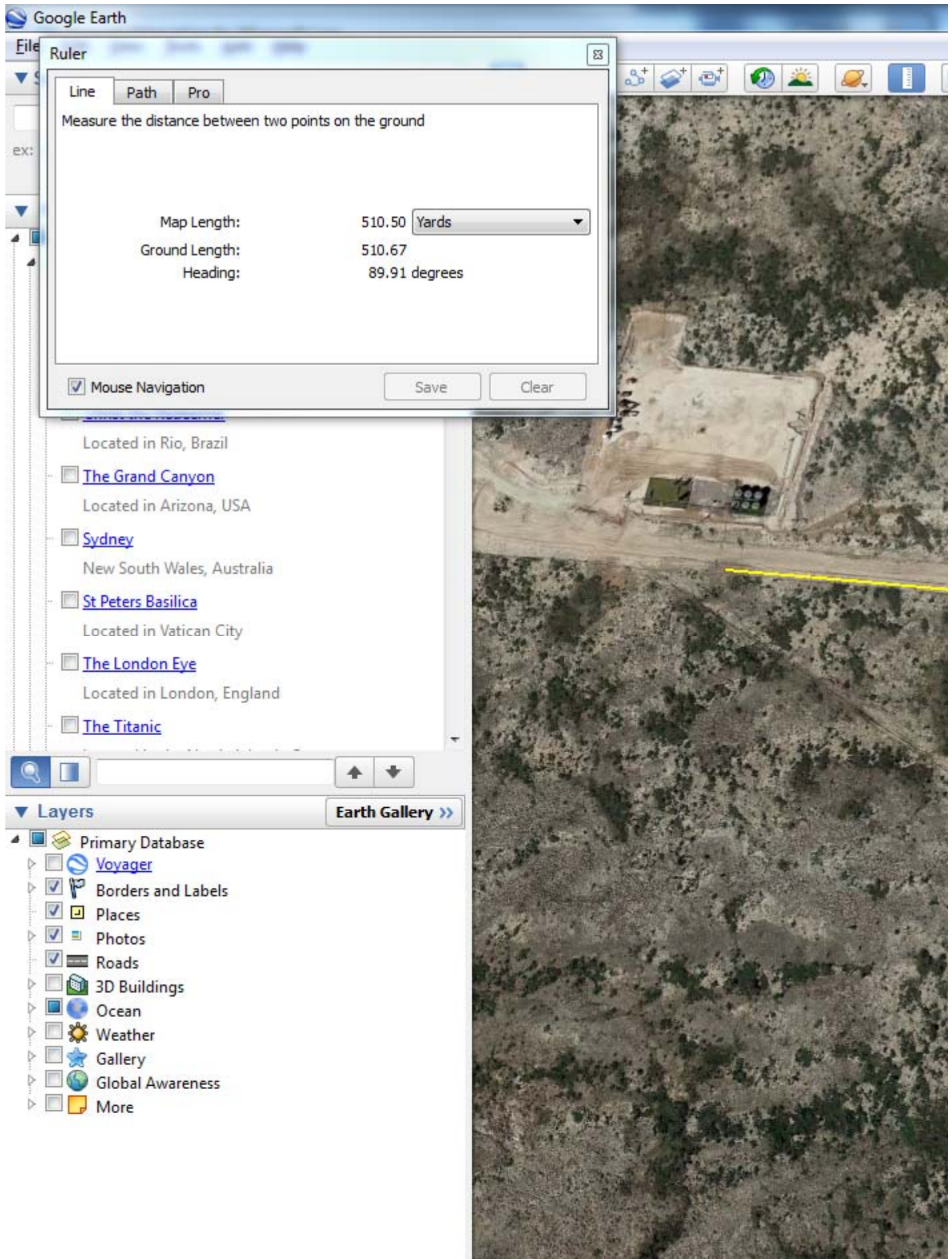
From: Brad Sparks

Sent: Wednesday, October 12, 2016 10:22 AM

To: Christine Alderman <calderman@cimarex.com>; Kim Barton <KBarton@cimarex.com>

Subject: Affected Area

Yellow line approx. 500 ft. see picture. Thin affected strip.





Brad Sparks

Production Foreman

Carlsbad District

Permian Basin Region

7101 Norris Road

Carlsbad, NM 88220

Office. 575.628.3447

Fax. 575.628.3566

Cell. 575.499.5093

--

Confidentiality Warning: This message along with any attachments are intended only for use of the individual or entity to which it is addressed and may contain information that is privileged or confidential and exempt from disclosure under applicable law. If the reader of this message is not the intended recipient or the employee or agent responsible for delivering this message to the intended recipient, you are hereby notified that any dissemination, distribution, or copying of this communication is strictly prohibited. If you have received this communication in error, please notify the sender immediately.

James A. Amos
Bureau of Land Management
Carlsbad Field Office
Supervisory Petroleum Engineering Tech
620 East Greene Street
Carlsbad, NM. 88220
Office: (575) 234-5909
Fax: (575) 234-5927
Cell: (575) 361-2648
E-mail: jamoss@blm.gov