

DISTRICT I
1625 N. French Dr., Hobbs, NM 88240

DISTRICT II
811 South First, Artesia, NM 88210

DISTRICT III
1000 Rio Brazos Rd., Aztec, NM 87410

DISTRICT IV
2040 South Pacheco, Santa Fe, NM 87505

State of New Mexico
Energy, Minerals and Natural Resources Department

Form C-102
Revised March 17, 1999

Submit to Appropriate District Office
State Lease - 4 Copies
Fee Lease - 3 Copies

OIL CONSERVATION DIVISION

2040 South Pacheco
Santa Fe, New Mexico 87504-2088

☐ AMENDED REPORT

WELL LOCATION AND ACREAGE DEDICATION PLAT

API Number 30-015-33103	Pool Code 73920	Pool Name E CARLSBAD - MORROW
Property Code 001776	Property Name BIG EDDY UNIT	Well Number 144
OGRID No. 001801	Operator Name BASS ENTERPRISES PRODUCTION COMPANY	Elevation 3170'

Surface Location

UL or lot No.	Section	Township	Range	Lot Idn	Feet from the	North/South line	Feet from the	East/West line	County
LOT 1	30	21 S	28 E		660	NORTH	710	WEST	EDDY

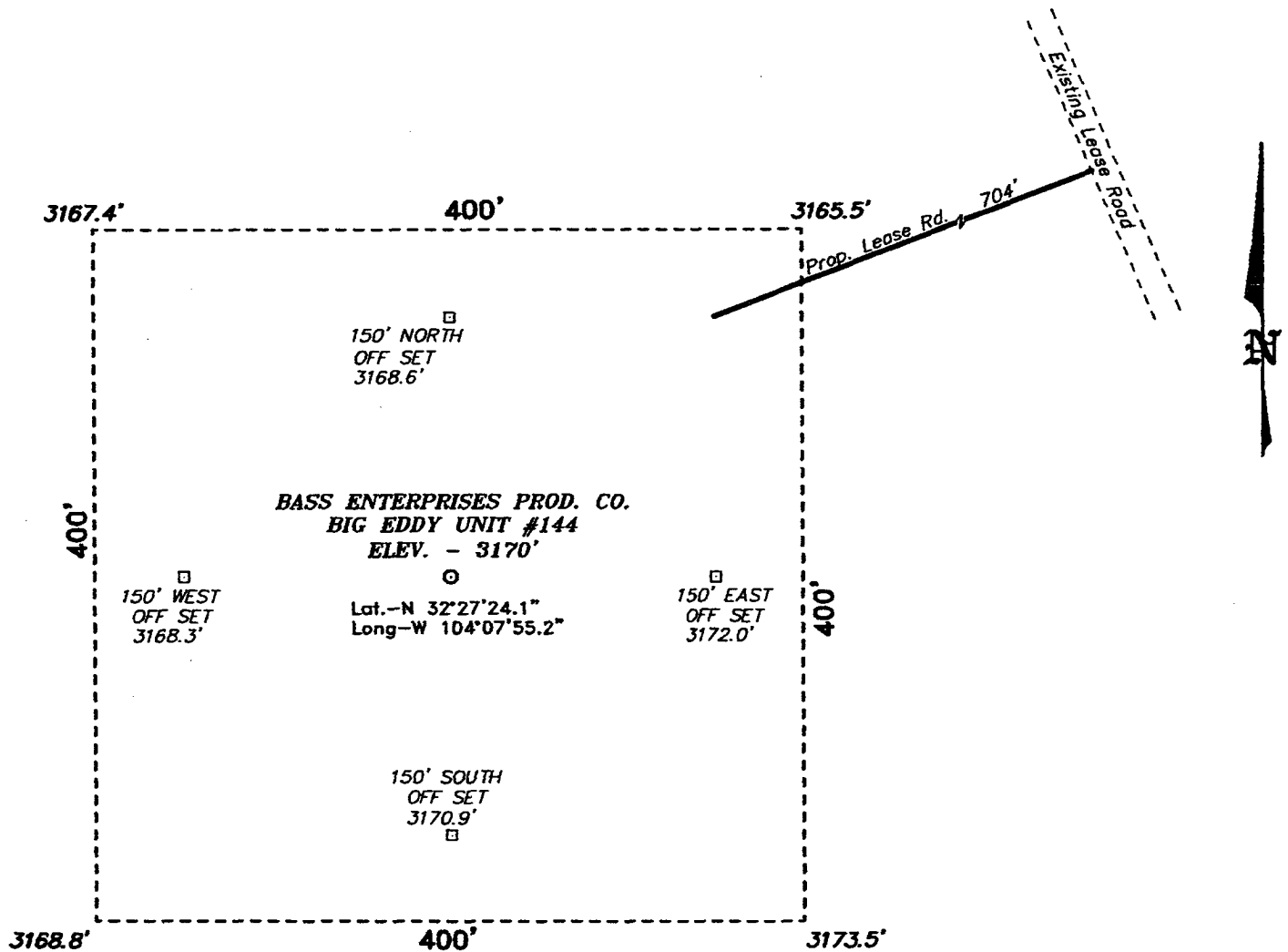
Bottom Hole Location If Different From Surface

UL or lot No.	Section	Township	Range	Lot Idn	Feet from the	North/South line	Feet from the	East/West line	County
Dedicated Acres	Joint or Infill	Consolidation Code	Order No.						

NO ALLOWABLE WILL BE ASSIGNED TO THIS COMPLETION UNTIL ALL INTERESTS HAVE BEEN CONSOLIDATED
OR A NON-STANDARD UNIT HAS BEEN APPROVED BY THE DIVISION

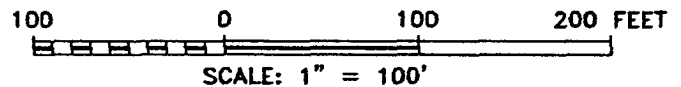
	<p>NOTE: TOTAL ACREAGE ESTIMATED FROM US GLO.</p>	<p>RECEIVED APR 14 2004 OCD-ARTESIA</p>	<p>OPERATOR CERTIFICATION</p> <p>I hereby certify the the information contained herein is true and complete to the best of my knowledge and belief.</p> <p><i>William R. Dannels</i> Signature W.R. DANNELS Printed Name DIVISION DRILLING SUPT. Title 3/31/04 Date</p> <p>SURVEYOR CERTIFICATION</p> <p>I hereby certify that the well location shown on this plat was plotted from field notes of actual surveys made by me or under my supervision, and that the same is true and correct to the best of my belief.</p> <p>MARCH 28, 2003 Date Surveyed</p> <p><i>[Signature]</i> Signature & Seal of Professional Surveyor W.O. No. 3138 Certificate No. Gary L. Jones 7977</p>
--	---	---	---

**SECTION 30, TOWNSHIP 21 SOUTH, RANGE 28 EAST, N.M.P.M.,
EDDY COUNTY, NEW MEXICO.**



DIRECTIONS TO LOCATION:

FROM THE JUNCTION OF CO. RD. 603A AND US HWY 62/180, GO SOUTHWEST ON HWY 62/180 FOR APPROX. 0.30 MILE TO A LEASE ROAD; THENCE SOUTHEAST ON LEASE ROAD FOR APPROX. 0.36 MILE; THENCE SOUTHERLY FOR APPROX. 0.75 MILE TO PROPOSED LEASE ROAD.



BASS ENTERPRISES PRODUCTION CO.

REF: BIG EDDY UNIT No. 144 / Well Pad Topo

THE BIG EDDY UNIT No. 144 LOCATED 660' FROM
THE NORTH LINE AND 710' FROM THE WEST LINE OF
SECTION 30, TOWNSHIP 21 SOUTH, RANGE 28 EAST,
N.M.P.M., EDDY COUNTY, NEW MEXICO.

Basin Surveys P.O. BOX 1786—HOBBS, NEW MEXICO

W.O. Number: 3158

Drawn By: K. GOAD

Date: 04-01-2003

Disk: KJG CD#7 - 3158A.DWG

Survey Date: 03-28-2003

Sheet 1 of 1 Sheets

