

DISTRICT I

325 N. French Dr., Hobbs, NM 88240

DISTRICT II

811 South First, Artesia, NM 88210

DISTRICT III

1000 Rio Brazos Rd., Aztec, NM 87410

DISTRICT IV

2040 South Pacheco, Santa Fe, NM 87505

State of New Mexico

Energy, Minerals and Natural Resources Department

Form C-102

Revised March 17, 1999

Submit to Appropriate District Office

State Lease - 4 Copies

Fee Lease - 3 Copies

OIL CONSERVATION DIVISION

2040 South Pacheco

Santa Fe, New Mexico 87504-2088

☐ AMENDED REPORT

WELL LOCATION AND ACREAGE DEDICATION PLAT

API Number 30-015-32126	Pool Code 47545	Pool Name NASH DRAW - DELAWARE
Property Code 001796	Property Name POKER LAKE UNIT	Well Number 180
OGRID No. 001801	Operator Name BASS ENTERPRISES PRODUCTION COMPANY	Elevation 3204'

Surface Location

UL or lot No.	Section	Township	Range	Lot Idn	Feet from the	North/South line	Feet from the	East/West line	County
H	7	24 S	30 E		2080	NORTH	760	EAST	EDDY

Bottom Hole Location If Different From Surface

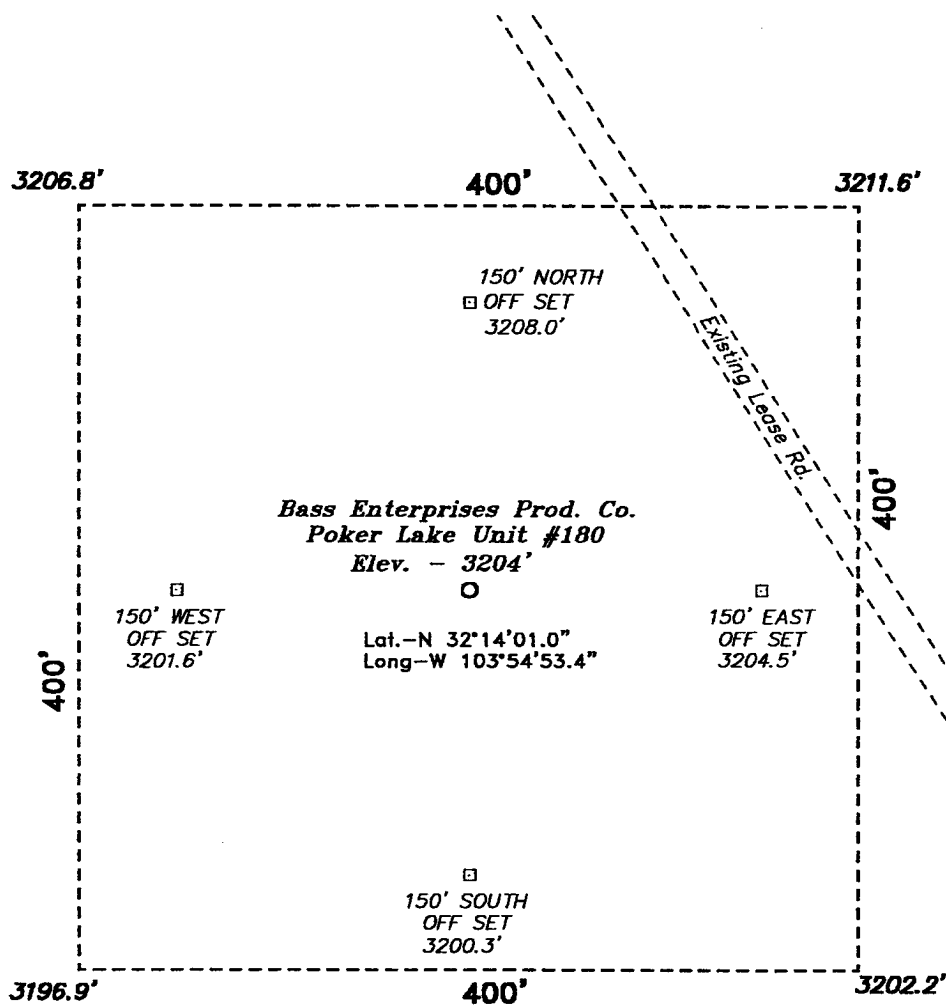
UL or lot No.	Section	Township	Range	Lot Idn	Feet from the	North/South line	Feet from the	East/West line	County

Dedicated Acres	Joint or Infill	Consolidation Code	Order No.

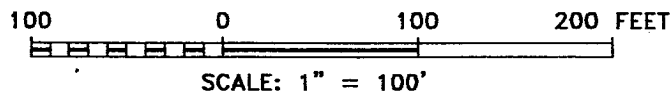
NO ALLOWABLE WILL BE ASSIGNED TO THIS COMPLETION UNTIL ALL INTERESTS HAVE BEEN CONSOLIDATED
OR A NON-STANDARD UNIT HAS BEEN APPROVED BY THE DIVISION

LOT 1 - 40.16 ac.		OPERATOR CERTIFICATION I hereby certify the the information contained herein is true and complete to the best of my knowledge and belief. Signature CINDI GOODMAN Printed Name PRODUCTION CLERK Title 3/23/04 Date
LOT 2 - 40.08 ac.		SURVEYOR CERTIFICATION I hereby certify that the well location shown on this plat was plotted from field notes of actual surveys made by me or under my supervision, and that the same is true and correct to the best of my belief. Date Surveyed May 8, 2004 Signature & Seal of Professional Surveyor
LOT 3 - 40.00 ac.		RECEIVED APR 28 2004 SUB-ARTESIA Accepted for record - NMOCB
LOT 4 - 39.92 ac.		BASIN SURVEYS Certificate No. 7977

**SECTION 7, TOWNSHIP 24 SOUTH, RANGE 30 EAST, N.M.P.M.,
EDDY COUNTY, NEW MEXICO.**



Accepted for record - NMOCD



DIRECTIONS TO LOCATION:

FROM THE JUNCTION OF STATE HWY 128 & CO. RD. 793, GO SOUTH AND WEST ON CO. RD. 793 APPROX. 4.0 MILES TO A LEASE ROAD; THENCE SOUTH ON LEASE ROAD APPROX. 4.5 MILES TO A POINT ON THE PROPOSED WELL PAD.

BASS ENTERPRISES PRODUCTION CO.

REF: Poker Lake Unit No. 180 / Well Pad Topo

THE POKER LAKE UNIT No. 180 LOCATED 2080' FROM
THE NORTH LINE AND 760' FROM THE EAST LINE OF
SECTION 7, TOWNSHIP 24 SOUTH, RANGE 30 EAST,
N.M.P.M., EDDY COUNTY, NEW MEXICO.

BASIN SURVEYS P.O. BOX 1786 - HOBBS, NEW MEXICO

W.O. Number: 1448

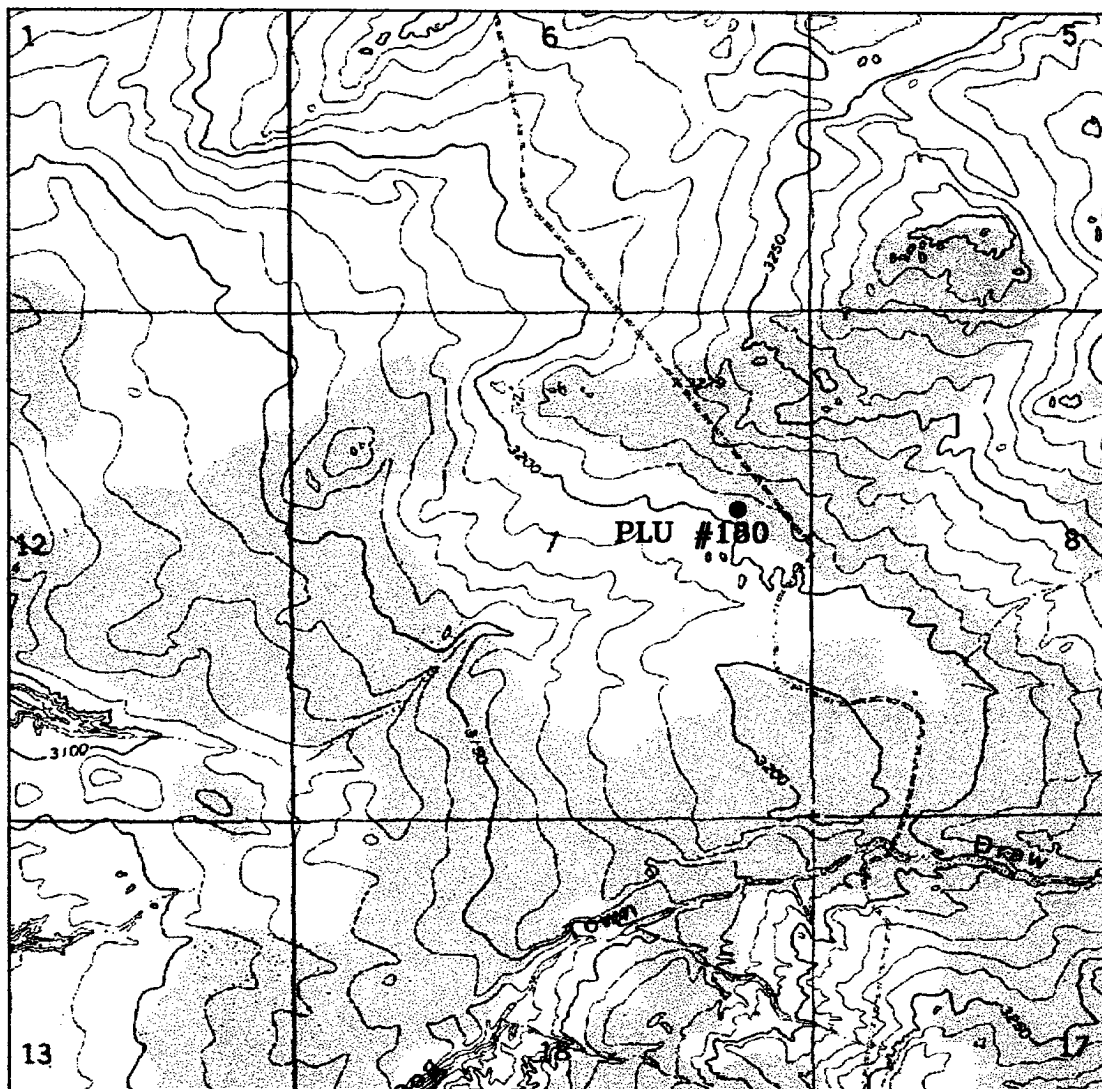
Drawn By: **K. GOAD**

Date: 05-09-2001

Disk: KJG CD#3 - 1305A.DWG

Survey Date: 05-08-2001

Sheet 1 of 1 Sheets



Accepted for record - NMOCD

POKER LAKE UNIT #180

Located at 2080' FNL and 760' FEL
 Section 7, Township 24 South, Range 30 East,
 N.M.P.M., Eddy County, New Mexico.



P.O. Box 1786
 1120 N. West County Rd.
 Hobbs, New Mexico 88241
 (505) 393-7316 - Office
 (505) 392-3074 - Fax
 bassinurveys.com

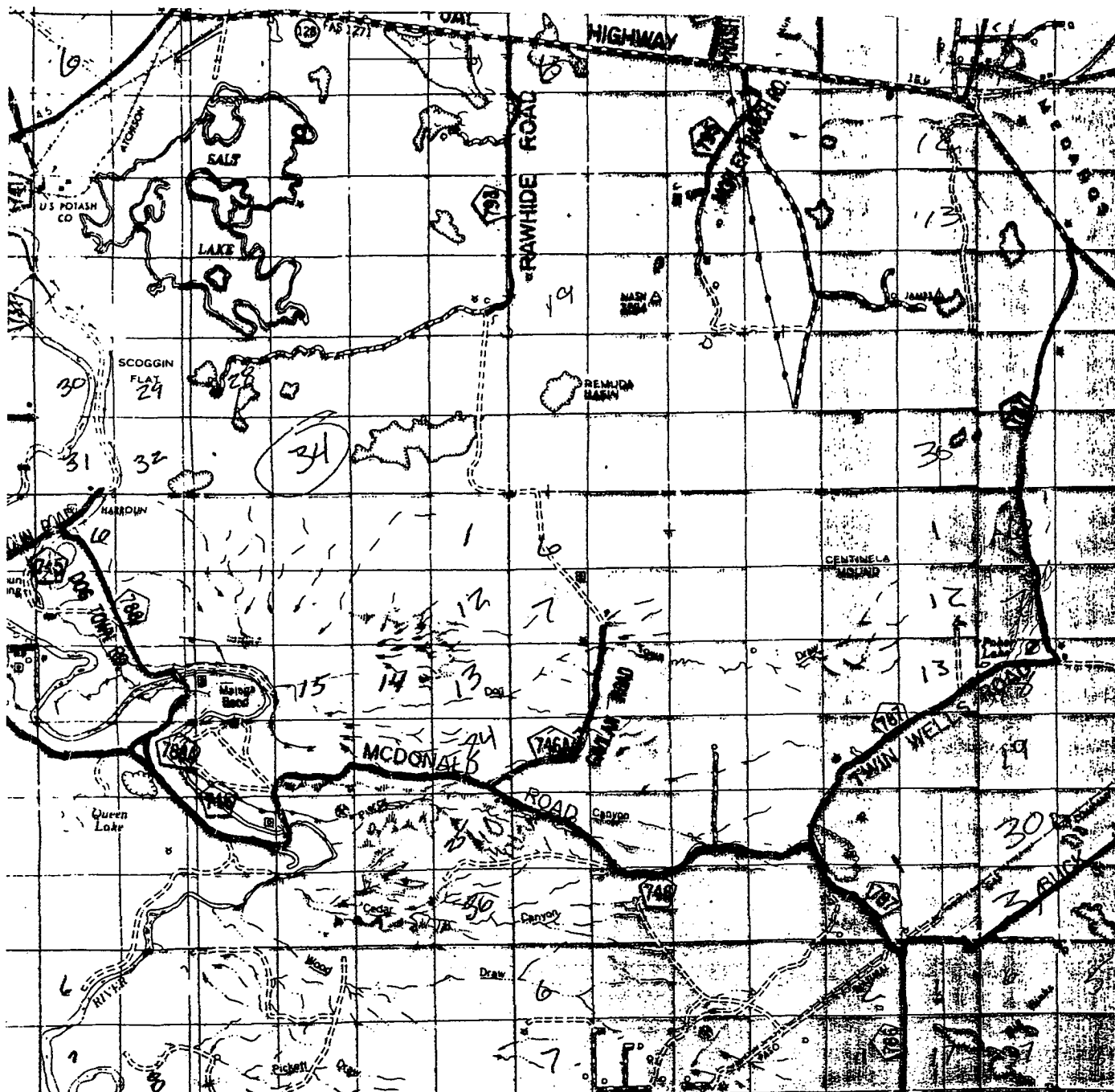
W.O. Number: 1448AA - KJG CD#3

Survey Date: 05-08-2001

Scale: 1" = 2000'

Date: 05-09-2001

**BASS ENTERPRISES
 PRODUCTION CO.**



POKER LAKE UNIT #180

Located at 2080' FNL and 760' FEL
 Section 7, Township 24 South, Range 30 East,
 N.M.P.M., Eddy County, New Mexico.

Accepted for record - NMOCID

basin
surveys

focused on excellence
 in the oilfield

P.O. Box 1786
 1120 N. West County Rd.
 Hobbs, New Mexico 88241
 (505) 393-7316 - Office
 (505) 392-3074 - Fax
 basinsurveys.com

W.O. Number: 1448AA - KJG CD#3

Survey Date: 05-08-2001

Scale: 1" = 2 MILES

Date: 05-09-2001

**BASS ENTERPRISES
 PRODUCTION CO.**