

UNITED STATES N.M. Oil Cons. Div.-Dist. 2  
DEPARTMENT OF THE INTERIOR  
BUREAU OF LAND MANAGEMENT  
1301 W. Grand Avenue  
Alamosa, NM 88210SUBMIT IN TRIPLICATE  
Other instructions on  
reverse sideFORM APPROVED  
OMB NO. 1004-0136  
Expires: February 28, 1995LEASE DESIGNATION AND SERIAL NO.  
89819

## APPLICATION FOR PERMIT TO DRILL OR DEEPEN

## 1a. TYPE OF WORK

DRILL ☒DEEPEN ☒ SECRETARY'S POTASH

## b. TYPE OF WELL

OIL  
WELL ☒GAS  
WELL ☐OTHER ☐SINGLE  
ZONE ☒MULTIPLE  
ZONE ☐

## 2. NAME OF OPERATOR

POGO PRODUCING COMPANY (MR. RICHARD WRIGHT 432-685-8140)

## 3. ADDRESS AND TELEPHONE NO.

PO. BOX 10340 MIDLAND, TEXAS 79702-7340 (432-685-8100)

## 4. LOCATION OF WELL (Report location clearly and in accordance with any State requirements.)\*

At surface

660' FNL &amp; 1980' FEL SECTION 18 T24S-R31E EDDY CO. NM

At proposed prod. zone SAME

RECEIVED

## 14. DISTANCE IN MILES AND DIRECTION FROM NEAREST TOWN OR POST OFFICE\*

Approximately 25 miles East of Carlsbad New Mexico

JUN 09 2004

## 15. DISTANCE FROM PROPOSED\*

LOCATION TO NEAREST

PROPERTY OR LEASE LINE, FT.

(Also to nearest drlg. unit line, if any)

660'

## 16. NO. OF ACRES IN LEASE

640

17. NO. OF ACRES ASSIGNED  
TO THIS WELL

40

## 18. DISTANCE FROM PROPOSED LOCATION\*

TO NEAREST WELL, DRILLING, COMPLETED,  
OR APPLIED FOR, ON THIS LEASE, FT.

1320'

## 19. PROPOSED DEPTH

8400'

## 20. ROTARY OR CABLE TOOLS

ROTARY

## 21. ELEVATIONS (Show whether DF, RT, GR, etc.)

3541' GR.

## 22. APPROX. DATE WORK WILL START\*

WHEN APPROVED

## 23. PROPOSED CASING AND CEMENTING PROGRAM

SIZE OF HOLE	GRADE, SIZE OF CASING	WEIGHT PER FOOT	SETTING DEPTH	QUANTITY OF CEMENT
25"	20" Conductor	NA	40'	Cement to surface W/Redi-mix
17 1/2"	13 3/8" H-40	48	800' 930' 935'	800 Sx. circulate to surface
11"	J-55 8 5/8"	24 & 32	4200'	1200 Sx. " " "
7 7/8"	J-55 5 1/2"	15.5 & 17	8400'	1300 Sx. 2 Stage job. TOC 3500'±

1. Drill 25" hole to 40'. Set 40' of 20" Conductor pipe and cement to surface with Redi-mix.
2. Drill 17 1/2" hole to 800'. Run and set 800' of 13 3/8" 48# H-40 ST&C casing. Cement with 800 Sx. of Class "C" cement + 2% CaCl<sub>2</sub> + 1/4# Flocele/Sx. Circulate cement to surface.
3. Drill 11" hole to 4200'. Run and set 4200' of 8 5/8" casing as follows: 2000' of 8 5/8" 32# J-55 ST&C, 1200' of 8 5/8" 24# J-55 ST&C, 1000' of 8 5/8" 32# J-55 ST&C casing. Cement with 1200 Sx. of Class "C" cement + additives, circulate cement to surface.
4. Drill 7 7/8" hole to 8400'. Run and set 8400' of 5 1/2" casing as follows: 2400' of 5 1/2" 17# J-55 LT&C, 5000' of 5 1/2" 15.5# J-55 LT&C, 1000' of 5 1/2" 17# J-55 LT&C casing. Cement in 2 stages with DV Tool at 6200'±. Cement 1st stage with 550 Sx. of Class "H" Premium Plus cement + additives, cement 2nd stage with 750 Sx. of Class "C" cement + additives. Estimate top of cement 3500' from surface.

## Carlsbad Controlled Water Basin

IN ABOVE SPACE DESCRIBE PROPOSED PROGRAM: If proposal is to deepen, give data on present productive zone and proposed new productive zone. If proposal is to drill or deepen directionally, give pertinent data on subsurface locations and measured and true vertical depths. Give casing and cementing program, if any.

24.

SIGNED

TITLE

Agent

DATE 04/09/04

(This space for Federal or State office use)

PERMIT NO.

APPROVAL DATE

Application approval does not warrant or certify that the applicant holds legal or equitable title to those rights in the subject lease which would entitle the applicant to conduct operations thereon.  
CONDITIONS OF APPROVAL, IF ANY:

/s/ Linda S. C. Rundell

APPROVED BY

STATE DIRECTOR

DATE 4 JUN 2004

\*See Instructions On Reverse Side

APPROVAL FOR 1 YEAR

Title 18 U.S.C. Section 1001, makes it a crime for any person knowingly and willfully to make to any department or agency of the

DISTRICT I  
1625 N. French Dr., Hobbs, NM 88240  
DISTRICT II  
811 South First, Artesia, NM 88210  
DISTRICT III  
1000 Rio Brazos Rd., Aztec, NM 87410  
DISTRICT IV  
2040 South Pacheco, Santa Fe, NM 87505

State of New Mexico  
Energy, Minerals and Natural Resources Department

Form C-102  
Revised March 17, 1999

Submit to Appropriate District Office  
State Lease - 4 Copies  
Fee Lease - 3 Copies

OIL CONSERVATION DIVISION

2040 South Pacheco  
Santa Fe, New Mexico 87504-2088

☐ AMENDED REPORT

WELL LOCATION AND ACREAGE DEDICATION PLAT

API Number	Pool Code 96046	Pool Name POKER LAKE DELAWARE NW.
Property Code 30489	Property Name PATTON "18" FEDERAL	Well Number 3
OGRID No. 17891	Operator Name POGO PRODUCING COMPANY	Elevation 3541'

Surface Location

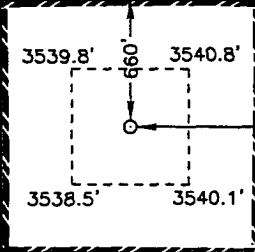
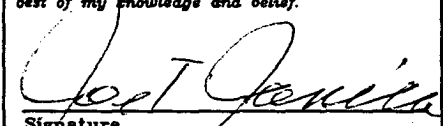
UL or lot No. B	Section 18	Township 24 S	Range 31 E	Lot Idn	Feet from the 660	North/South line NORTH	Feet from the 1980	East/West line EAST	County EDDY
--------------------	---------------	------------------	---------------	---------	----------------------	---------------------------	-----------------------	------------------------	----------------

Bottom Hole Location If Different From Surface

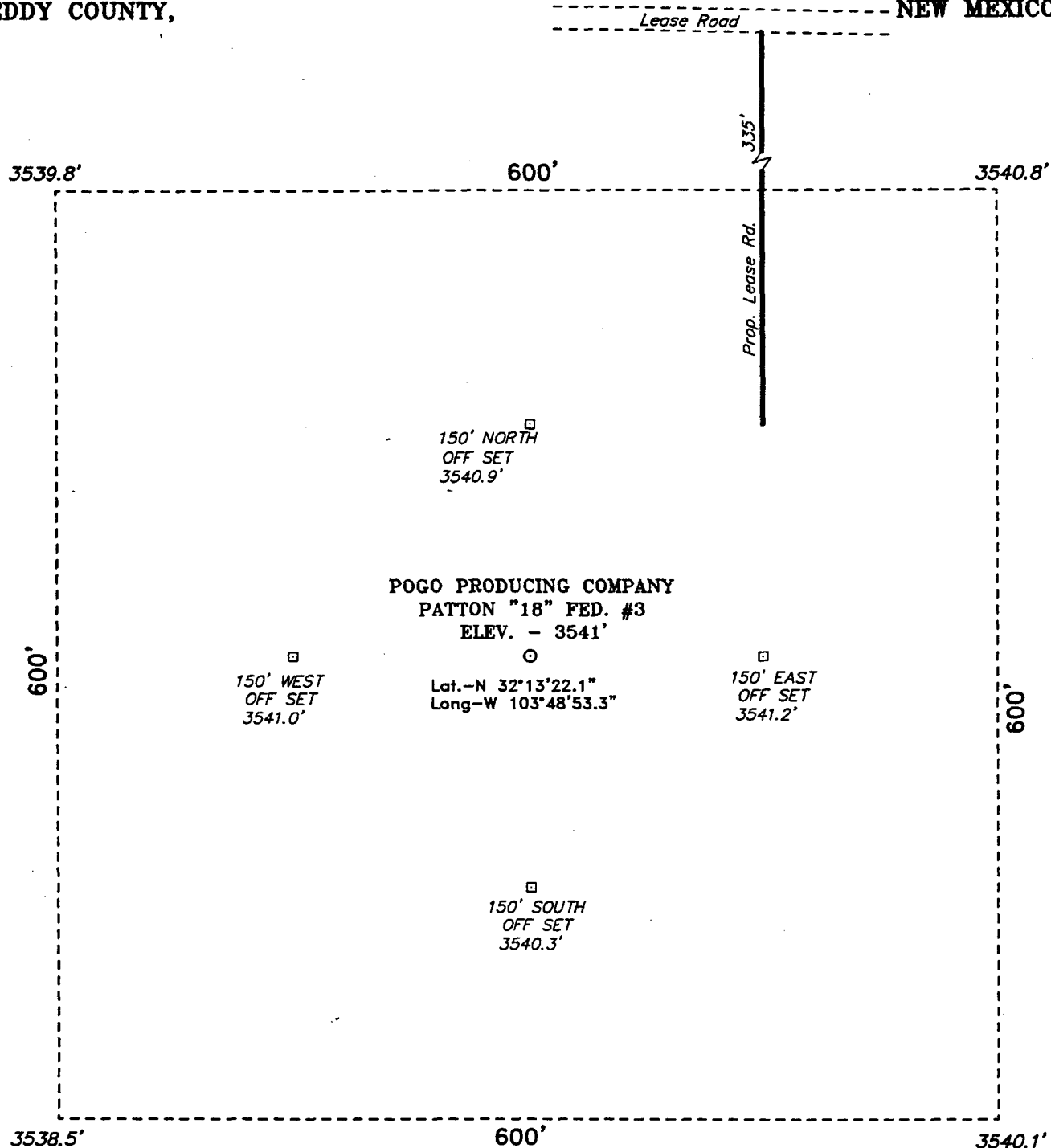
UL or lot No.	Section	Township	Range	Lot Idn	Feet from the	North/South line	Feet from the	East/West line	County
---------------	---------	----------	-------	---------	---------------	------------------	---------------	----------------	--------

Dedicated Acres 40	Joint or Infill	Consolidation Code	Order No.
-----------------------	-----------------	--------------------	-----------

NO ALLOWABLE WILL BE ASSIGNED TO THIS COMPLETION UNTIL ALL INTERESTS HAVE BEEN CONSOLIDATED  
OR A NON-STANDARD UNIT HAS BEEN APPROVED BY THE DIVISION

LOT 1 - 41.87 AC.	Lat.: N32°13'22.1" Long.: W103°48'53.3"		<b>OPERATOR CERTIFICATION</b>  I hereby certify the the information contained herein is true and complete to the best of my knowledge and belief.   Signature Joe T. Janica Printed Name Agent Title 04/09/04 Date
LOT 2 - 41.94 AC.			<b>SURVEYOR CERTIFICATION</b>  I hereby certify that the well location shown on this plat was plotted from field notes of actual surveys made by me or under my supervision, and that the same is true and correct to the best of my belief.  APRIL 5, 2004 Date Surveyed Signature of Gary L. Jones Professional Surveyor NEW MEXICO 7977 P.O. No. 4154 Certificate No. Gary L. Jones 7977 BASIN SURVEYS
LOT 3 - 42.00 AC.			
LOT 4 - 42.07 AC.		EXHIBIT "A"	

SECTION 18, TOWNSHIP 24 SOUTH, RANGE 31 EAST, N.M.P.M.,  
EDDY COUNTY, NEW MEXICO.



Directions to Location:

FROM THE JUNCTION OF CO. RD. 787 AND STATE  
HWY 128, GO SOUTHERLY ON CO. RD. 128 FOR 5.1  
MILES TO A LEASE ROAD; THENCE WEST ON LEASE  
ROAD FOR 0.2 MILE TO PROPOSED LEASE ROAD.

**BASIN SURVEYS** P.O. BOX 1786-HOBBS, NEW MEXICO

W.O. Number: 4154 Drawn By: K. GOAD

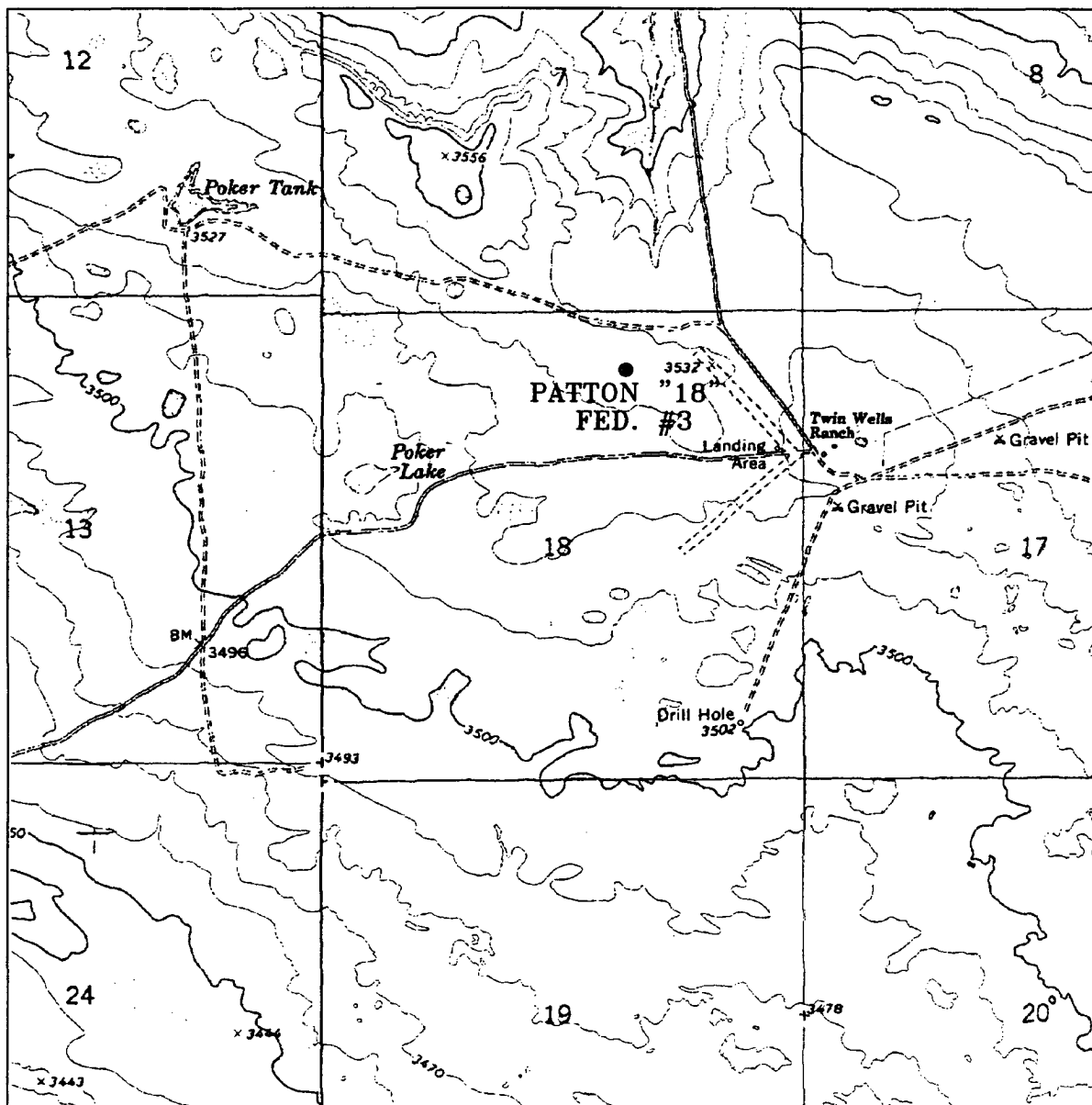
Date: 04-06-2004 Disk: KJG CD#4 - 4154A.DWG

**POGO PRODUCING CO.**

REF: PATTON "18" FED. #3 / Well Pad Topo

THE PATTON "18" FED. No. 3 LOCATED 660' FROM  
THE NORTH LINE AND 1980' FROM THE EAST LINE OF  
SECTION 18, TOWNSHIP 24 SOUTH, RANGE 31 EAST,  
N.M.P.M., EDDY COUNTY, NEW MEXICO.

Survey Date: 04-05-2004 Sheet 1 of 1 Sheets



## PATTON "18" FEDERAL #3

Located at 660' FNL and 1980' FEL  
 Section 18, Township 24 South, Range 31 East,  
 N.M.P.M., Eddy County, New Mexico.

**basin  
surveys**

focused on excellence  
in the oilfield

P.O. Box 1786  
 1120 N. West County Rd.  
 Hobbs, New Mexico 88241  
 (505) 393-7316 - Office  
 (505) 392-3074 - Fax  
[basinsurveys.com](http://basinsurveys.com)

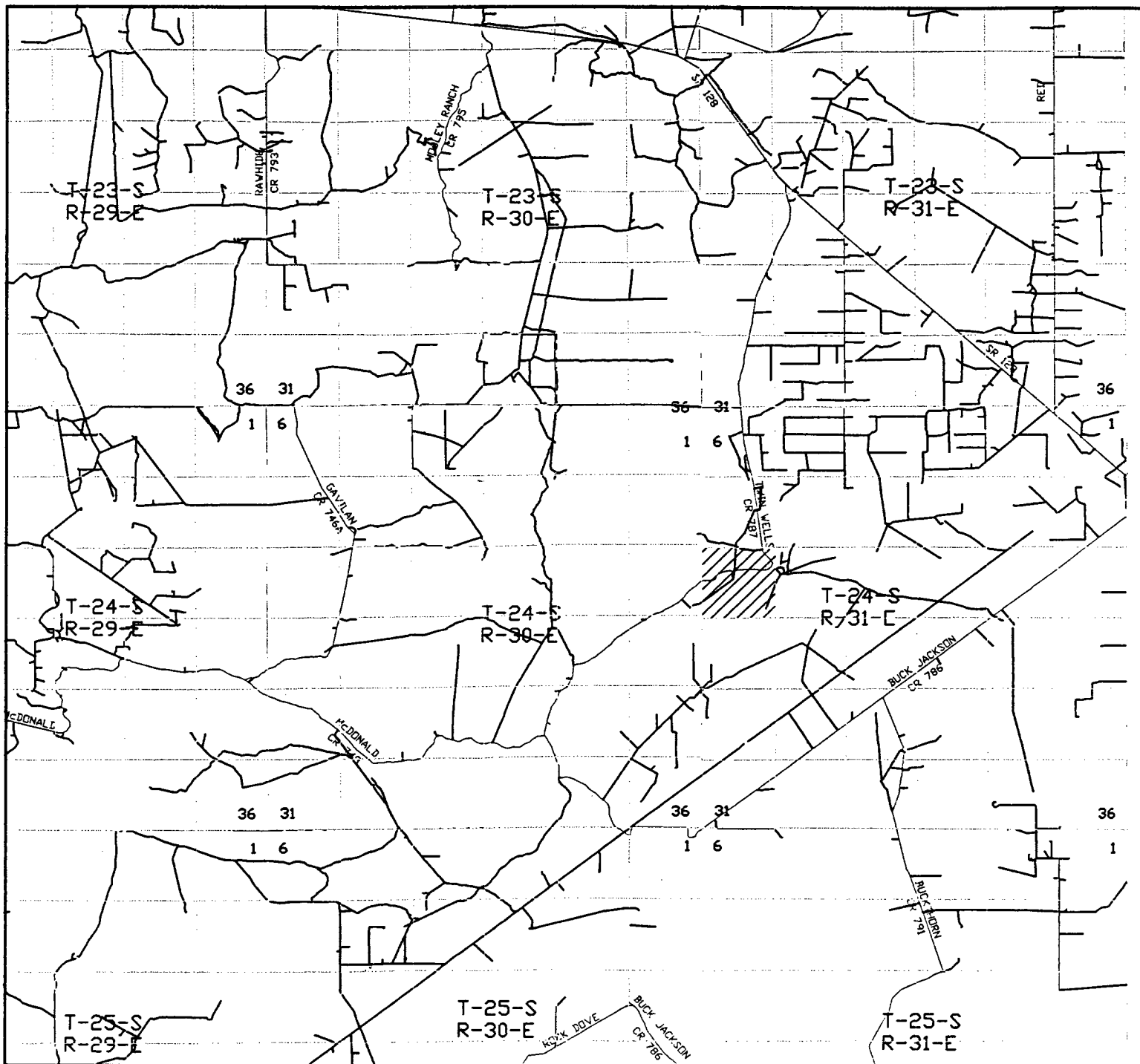
W.O. Number: 4154AA - KJG CD#5

Survey Date: 04-05-2004

Scale: 1" = 2000'

Date: 04-06-2004

**POGO  
PRODUCING  
COMPANY**



**PATTON "18" FEDERAL #3**  
 Located at 660' FNL and 1980' FEL  
 Section 18, Township 24 South, Range 31 East,  
 N.M.P.M., Eddy County, New Mexico.

**basin**  
**surveys**

focused on excellence  
 in the oilfield

P.O. Box 1786  
 1120 N. West County Rd.  
 Hobbs, New Mexico 88241  
 (505) 393-7316 - Office  
 (505) 392-3074 - Fax  
 basinsurveys.com

W.O. Number: 4154AA - KJG CD#5

Survey Date: 04-05-2004

Scale: 1" = 2 MILES

Date: 04-06-2004

**POGO**  
**PRODUCING**  
**COMPANY**

# APPLICATION TO DRILL

POGO PRODUCING COMAPMY  
PATTON "18" FEDERAL #3  
UNIT "B" SECTION 18  
T24S-R31E EDDY CO. NM

In response to questions asked under Section II of Bulletin NTL-6 the following information on the above well is provided for your consideration.

1. Location: 660' FNL & 1980' FEL SECTION 18 T24S-R31E EDDY CO. NM
2. Elevation above Sea Level: 3541' GR.
3. Geologic name of surface formation: Quaternary Aeolian Deposits.
4. Drilling tools and associated equipment: Conventional rotary drilling rig using drilling mud as a circulating medium for solids removal from hole.
5. Proposed drilling depth: 8400'
6. Estimated tops of geological markers:

Rustler Anhydrite	500'	Cherry Canyon	5184'
Salado	750'	Brushy Canyon	6421'
Delaware	4274'	Bone Spring	8104'
Bell Canyon	4299'		
7. Possible mineral bearing formations:

Bone Spring	Oil
-------------	-----
8. Casing program:

Hole size	Interval	OD of casing	Weight	Thread	Collar	Grade
25"	0-40	20"	NA	NA	NA	Conductor
17½"	0-800'	13 3/8"	48#	8-R	ST&C	H-40
11"	0-4200'	8 5/8"	32 & 24	8-R	ST&C	J-55
7 7/8"	0-8400'	5½"	17 & 15.5	8-R	LT&C	J-55

# APPLICATION TO DRILL

POGO PRODUCING COMAPMY  
PATTON "18" FEDERAL #3  
UNIT "B" SECTION 18  
T24S-R31E EDDY CO. NM

## 9. CASING CEMENTING & SETTING DEPTH:

20"	Conductor	Set 40' of 20" conductor and cement to surface with Redi-mix.
13 3/8"	Surface	Set 800' of 13 3/8" 48# H-40 ST&C casing. Cement with 800 Sx. of Class "C" cement + 2% CaCl <sub>2</sub> + 1/2# Flocele/Sx. Circulate cement to surface.
8 5/8"	Inter-mediate	Set 4200' of 8 5/8" casing as follows: 2000' of 8 5/8" 32# J-55 ST&C, 1200' of 8 5/8" 24# J-55 ST&C, 1000' of 8 5/8" 32# J-55 ST&C casing. Cement with 1200 Sx. of Class "C" cement + additives, circulate cement to surface.
5 1/2"	Production	Set 8400' of 5 1/2" casing as follows: 2400' of 5 1/2" 17# J-55 LT&C, 5000' of 5 1/2" 15.5# J-55 LT&C, 1000' of 5 1/2" 17# J-55 LT&C casing. Cement in 2 stages DV Tool at 6200'±. Cement 1st stage with 550 Sx. of Class "H" cement + additives. 2nd stage cement with 750 Sx. of Class "C" cement + additives. Estimate top of cement 3500' from surface.

10. PRESSURE CONTROL EQUIPMENT: Exhibit "E" shows a 900 series 3000 PSI working perssure B.O.P. consisting of an annular bag type preventor, middle blind rams, and bottom pipe rams. The B.O.P. will be nipped up on the 13 3/8" casing and tested to API specifications. The B.O.P. will be operated at least once each 24 Hr. period and the blind rams will be operated when the drill pipe is out of on trips. Full opening stabbing valve and upper kelly cock will be available in case if needed. Exhibit "E-1" shows a hydraulically operated closing unit and a 3" 3000 PSI choke manifold with adjustable chokes. No abnormal pressures or temperatures are expected while drilling this well. No problems in offset wells.

## 11. PROPOSED MUD CIRCULATING SYSTEM:

DEPTH	MUD WT.	VISC.	FLUID LOSS	TYPE MUD SYSTEM
40-800'	8.4-8.7	29-34	NC	Fresh water spud mud add paper to control seepage.
800-4200'	10.0-10.2	29-38	NC	Brine water use paper to control seepage & High viscosity sweeps to clean hole.
4200-8400'	8.4-8.7	29-40	NC*	Fresh water mud system use Gel for viscosity control, use high viscosity sweeps to clean hole.

\* Water loss may have to be reduced to 10 cc or less in order to protect formation, run logs, DST's and casing. If needed use a Dris-pac system.

Sufficient mud materials will be kept on location at all times in order to combat lost circulation, or unexpected kicks. In order to run DST's, open hole logs, and casing, viscosity, and water loss may have to be adjusted to meet these needs.

APPLICATION TO DRILL

POGO PRODUCING COMPANY  
PATTON "18" FEDERAL #3  
UNIT "B" SECTION 18  
T24S-R31E EDDY CO. NM

12. LOGGING, CORING, AND TESTING PROGRAM:

- A. Open hole logs: Dual Induction, LDT, SNP, Gamma Ray, Caliper from TD back to 8 5/8" casing shoe. Run Gamma Ray, Neutron from 8 5/8" casing shoe back to surface.
- B. Mud logger may be placed on hole at 4200' and remain on hole to TD.
- C. No cores or DST's are planned at this time.

13. POTENTIAL HAZARDS:

No abnormal pressures or temperatures are expected. There is no known presence of H<sup>2</sup>S in this area. If H<sup>2</sup>S is encountered the operator will comply with the provisions of Onshore Oil and Gas Order No. 6. No lost circulation is expected to occur. All personnel will be familiar with all aspects of safe operation of equipment being used to drill this well. Estimated BHP 4500 PSI, and Estimated BHT 160°.

14. ANTICIPATED STARTING DATE AND DURATION OF OPERATION:

Road and location construction will begin after the BLM has approved the APD. Anticipated spud date will be as soon after BLM approval and as soon as a rig will be available. Move in operation and drilling is expected to take 25 days. If production casing is run then an additional 30 days will be needed to complete well and construct surface facilities and/or lay flowlines in order to place well on production.

15. OTHER FACETS OF OPERATIONS:

After running casing, cased hole Gamma Ray, Neutron Collar logs will be run from TD back to all possible productive zones. The Bone Spring formation will be perforated and stimulated in order to establish production. The well will be swab tested and potentialized as an oil well.



1. All Company and Contract personnel admitted on location must be trained by a qualified H<sub>2</sub>S safety instructor to the following:
  - A. Characteristics of H<sub>2</sub>S
  - B. Physical effects and hazards
  - C. Proper use of safety equipment and life support systems.
  - D. Principle and operation of H<sub>2</sub>S detectors, warning system and briefing areas.
  - E. Evacuation procedure, routes and first aid.
  - F. Proper use of 30 minute pressure demand air pack.
2. H<sub>2</sub>S Detection and Alarm Systems
  - A. H<sub>2</sub>S detectors and audio alarm system to be located at bell nipple, end of blooie line (mud pit) and on derrick floor or doghouse.
3. Windsock and/or wind streamers
  - A. Windsock at mudpit area should be high enough to be visible.
  - B. Windsock at briefing area should be high enough to be visible.
  - C. There should be a windsock at entrance to location.
4. Condition Flags and Signs
  - A. Warning sign on access road to location.
  - B. Flags to be displayed on sign at entrance to location. Green flag, normal safe condition. Yellow flag indicates potential pressure and danger. Red flag, danger, H<sub>2</sub>S present in dangerous concentration. Only emergency personnel admitted to location.
5. Well control equipment
  - A. See exhibit "E" & "E-1"
6. Communication
  - A. While working under masks chalkboards will be used for communication.
  - B. Hand signals will be used where chalk board is inappropriate.
  - C. Two way radio will be used to communicate off location in case of emergency help is required. In most cases cellular telephoned will be available at most drilling foreman's trailer or living quarters.
7. Drillstem Testing
  - A. Exhausts will be watered.
  - B. Flare line will be equipped with an electric ignitor or a propane pilot light in case gas reaches the surface.
  - C. If the location is near to a dwelling a closed DST will be performed.

## HYDROGEN SULFIDE DRILLING OPERATIONS PLAN

8. Drilling contractor supervisor will be required to be familiar with the effects  $H_2S$  has on tubular goods and other mechanical equipment.
9. If  $H_2S$  is encountered, mud system will be altered if necessary to maintain control of formation. A mud gas separator will be brought into service along with  $H_2S$  scavengers if necessary.

## SURFACE USE PLAN

POGO PRODUCING COMPANY  
PATTON "18" FEDERAL #3  
UNIT "B" SECTION 18  
T24S-R31E EDDY CO. NM

1. EXISTING ROADS & PROPOSED ROADS: Area maps; Exhibit "B" is a reproduction of a County General Hi-way Map. Exhibit "C" is a reproduction of a USGS Topographic Map, showing existing and proposed roads. All existing roads will be maintained in a condition equal to or better than current conditions. Any new roads will be constructed to BLM specifications.
  - A. Exhibit "A" shows the proposed well site as staked.
  - B. From Hobbs New Mexico take U.S. Hi-way 62-180 West toward Carlsbad New Mexico go approximately 40 miles to the WIPP road, turn Left on to the WIPP road go South 13 miles to CR-802, turn Right go 4.2 miles to State Hi-way 128, turn Left go 2.4 miles to CR-787 ( Twin Wells Road) turn Right go 5.3 miles turn Right (West) go .2 miles to location on the South side of road.
  - C. Exhibit "F" shows the routes of new roads, existing roads, proposed powerline, and proposed flowlines.
2. PLANNED ACCESS ROADS: Approximately 350' of new road will be constructed.
  - A. The access roads will be crowned and ditched to a 12' wide travel surface with a 40' Right-of-Way.
  - B. Gradient of all roads will be less than 5.00%.
  - C. If turn-outs are necessary they will be constructed.
  - D. If needed roads will be surfaced with a minimum of 4" of caliche. This material will be obtained from a local source.
  - E. Center-line for new roads will be flagged. Earth-work will be will be done as field conditions require.
  - F. Culverts will be placed in the access road if they are necessary. The roads will be constructed to utilize low water crossings for drainage as required by topography.
3. LOCATIONS OF EXISTING WELLS IN A ONE MILE RADIUS. EXHIBIT "A-1"
  - A. Water wells - One approximately .5 miles East of location.
  - B. Disposal wells -None known
  - C. Drilling wells -None known
  - D. Producing wells -As shown on Exhibit "A-1"
  - E. Abandoned wells -As shown on Exhibit "A-1"

## SURFACE USE PLAN

POGO PRODUCING COMPANY  
PATTON "18" FEDERAL #3  
UNIT "B" SECTION 18  
T24S-R31E EDDY CO. NM

4. If on completion this well is a producer the operator will lay pipelines and construct powerlines along existing road R-O-W's or other existing R-O-W's. Possible routes of pipelines, flowlines and powerlines are shown on Exhibit "F".

### 5. LOCATION AND TYPE OF WATER SUPPLY:

Water will be purchased locally from a commercial source and trucked over the access roads or piped to location in flexible lines laid on top of the ground.

*W/ prior Sundry Notice approval.  
TSD*

### 6. SOURCE OF CONSTRUCTION MATERIAL:

If possible construction material will be obtained from the excavation of drill site, if additional material is needed it will be obtained from a local source and transported over the access roads as shown on Exhibit "C".

### 7. METHODS OF HANDLING WASTE MATERIAL:

- A. Drill cuttings will be disposed of in the reserve pits.
- B. All trash, junk and other waste material will be contained in trash cages or trash bins to prevent scattering. When the job is completed all contents will be removed and disposed of in a approved sanitary land fill.
- C. Salts remaining after completion of well will be picked up by the supplier, including broken sacks.
- D. Waste water from living quarters will be drained into holes with a minium of 10'. These holes will be covered during drilling and will be back filled when the well is completed. A Porto-John will be provided for the rig crews. This equipment will be properly maintained during the drilling and completion operations and will be removed when all operations are complete.
- E. Remaining drilling fluids will be allowed to evaporate in the reserve pits until the pits are dry enough to be broken out for furthred drying. If the drilling fluids do not evaporate in a reasonable time they will be hauled off by transports to a state approve disposal site. Later pips will be broken out to speed drying. Water produced during completion will be put in reserve pits. Oil and condensate produced will be put in storage tanks and sold.

### 8. ANCILLARY FACILITIES:

- A. No camps or air strips will be constructed on location.

## SURFACE USE PLAN

POGO PRODUCING COMPANY  
PATTON "18" FEDERAL #3  
UNIT "B" SECTION 18  
T24S-R31E EDDY CO. NM

### 9. WELL SITE LAYOUT

- A. Exhibit "D" shows the proposed well site layout.
- B. This exhibit indicated proposed location of reserve and sump pits and living facilities.
- C. Mud pits in the active circulating system will be steel pits & the reserve pit is proposed to be unlined unless subsurface condition encountered during pit construction indicate that lining is needed for lateral containment of fluids.
- D. If needed, the reserve pit is to be lined with polyethelene. The pit liner will be 6 mils thick. Pit liner will extend a minimum 2'00" over the reserve pits dikes where the liner will be anchored down.
- E. The reserve pit will be fenced on three sides with four strands of barbed wire during drilling and completion phases. The fourth side will be fenced after all drilling operations have ceased. If the well is a producer, the reserve pit fence will be torn down. The reserve pit and those areas of the location not essential to production facilities will be reclaimed and seeded per BLM requirements.

### 10. PLANS FOR RESTORATION OF SURFACE

Rehabilitation of the location and reserve pit will start in a timely manner after all drilling operations cease. The type of reclamation will depend on whether the well is a producer or a dry hole.

However, in either event, the reserve pit will be allowed to dry properly, and fluid removed and disposed of in accordance with Article 7.B as previously noted. The pit area will then be leveled and contoured to conform to the original and surrounding area. Drainage systems, if any, will be reshaped to the original configuration with provisions made to alleviate erosion. These may need to be modified in certain circumstances to prevent inundation of the location's pad and surface facilities. After the area has been shaped and contoured, topsoil from the spoil pile will be placed over the disturbed area to the extent possible. Revegetation procedures will comply with BLM standards.

If the well is a dry hole, the pad and road area will be contoured to match the existing terrain. Topsoil will be spread to the extent possible. Revegetation will comply with BLM standards.

Should the well be a producer, the previously noted procedures will apply to those areas which are not required for production facilities.

11. OTHER INFORMATION:

- A. Topography consists of sand dunes with a slight dip to the West. Deep sandy soil supports shinnery oak, native grasses, and an occasional mesquite tree.
- B. Surface is owned by the U.S. Government and is administered by the Bureau of Land Management. The surface is used for grazing livestock and the production of oil and gas.
- C. An archaeological survey will be conducted on the location and access roads. This report will be filed with The Bureau of Land Management in the Carlsbad field office.
- D. One dwelling approximately .75 miles Southeast of location.

12. OPERATORS REPRESENTATIVES:

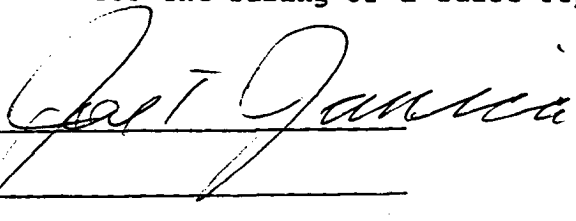
Before construction:

TIERRA EXPLORATION, INC  
P.O. BOX 2188  
HOBBS, NEW MEXICO 88241  
OFFICE Ph. 505-391-8503  
JOE T. JANICA

During and after construction:

POGO PRODUCING COMPANY  
P.O. BOX 10340  
MIDLAND, TEXAS 79702-7340  
OFFICE Ph. 432-685-8100  
Mr. RICHARD WRIGHT 432-685-8140

13. CERTIFICATION: I hereby certify that I, or persons under my direct supervision have inspected the proposed drill site and access roads, and that I am familiar with the conditions which currently exist, that the statements made in this plan are to the best of my knowledge true and correct, and that the work associated<sup>2</sup> with the operations proposed herein will be performed by POGO PRODUCING COMPANY it's contractors/subcontractors is in compformity with this plan and the terms and conditions under which it is approved. This statement is subject to the provision of U.S.C. 1001 for the filing of a false report.

NAME: Joe T. Janica 

TITLE: Agent

DATE: 04/09/04



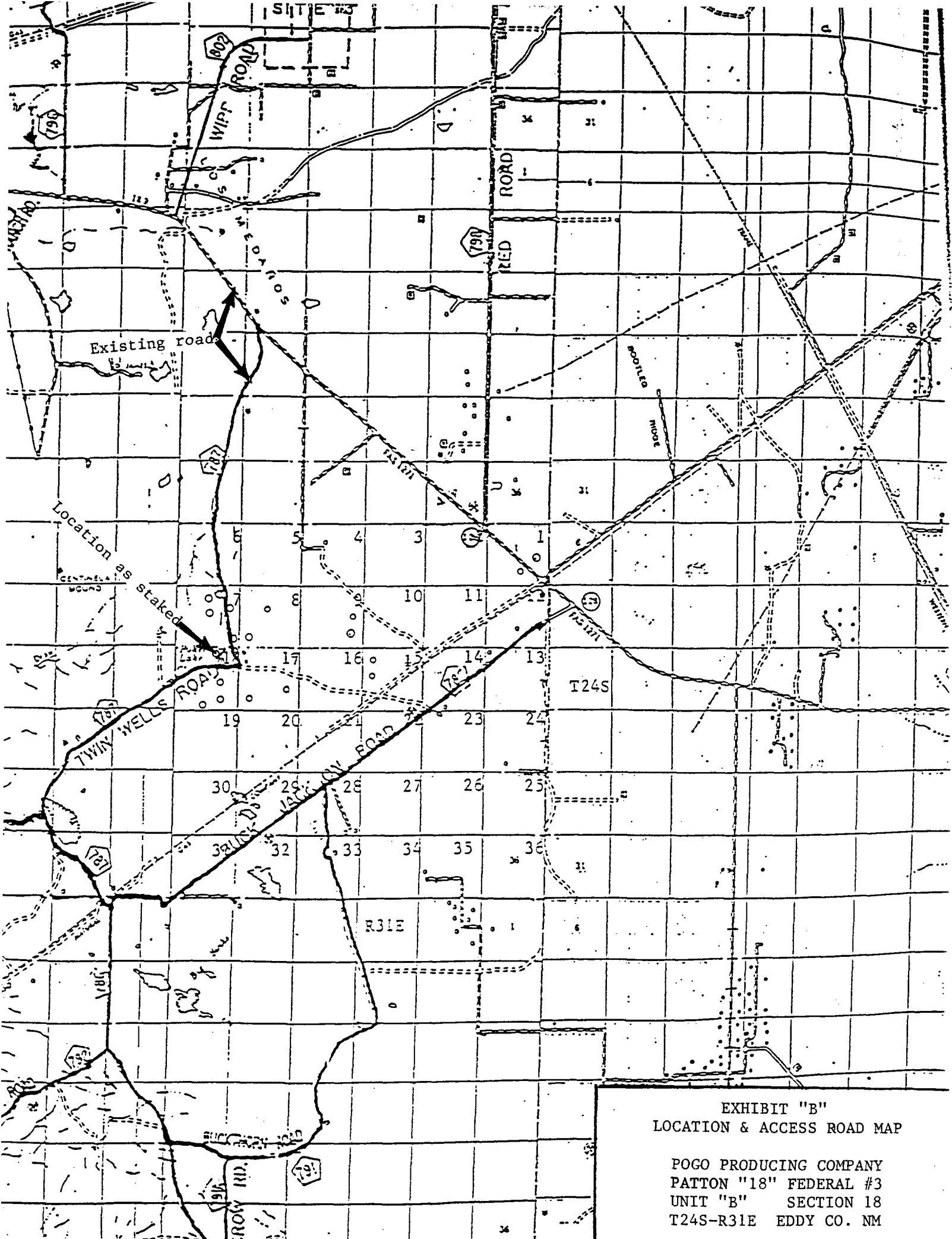


EXHIBIT "B"  
LOCATION & ACCESS ROAD MAP

POGO PRODUCING COMPANY  
PATTON "18" FEDERAL #3  
UNIT "B" SECTION 18  
T24S-R31E EDDY CO. NM



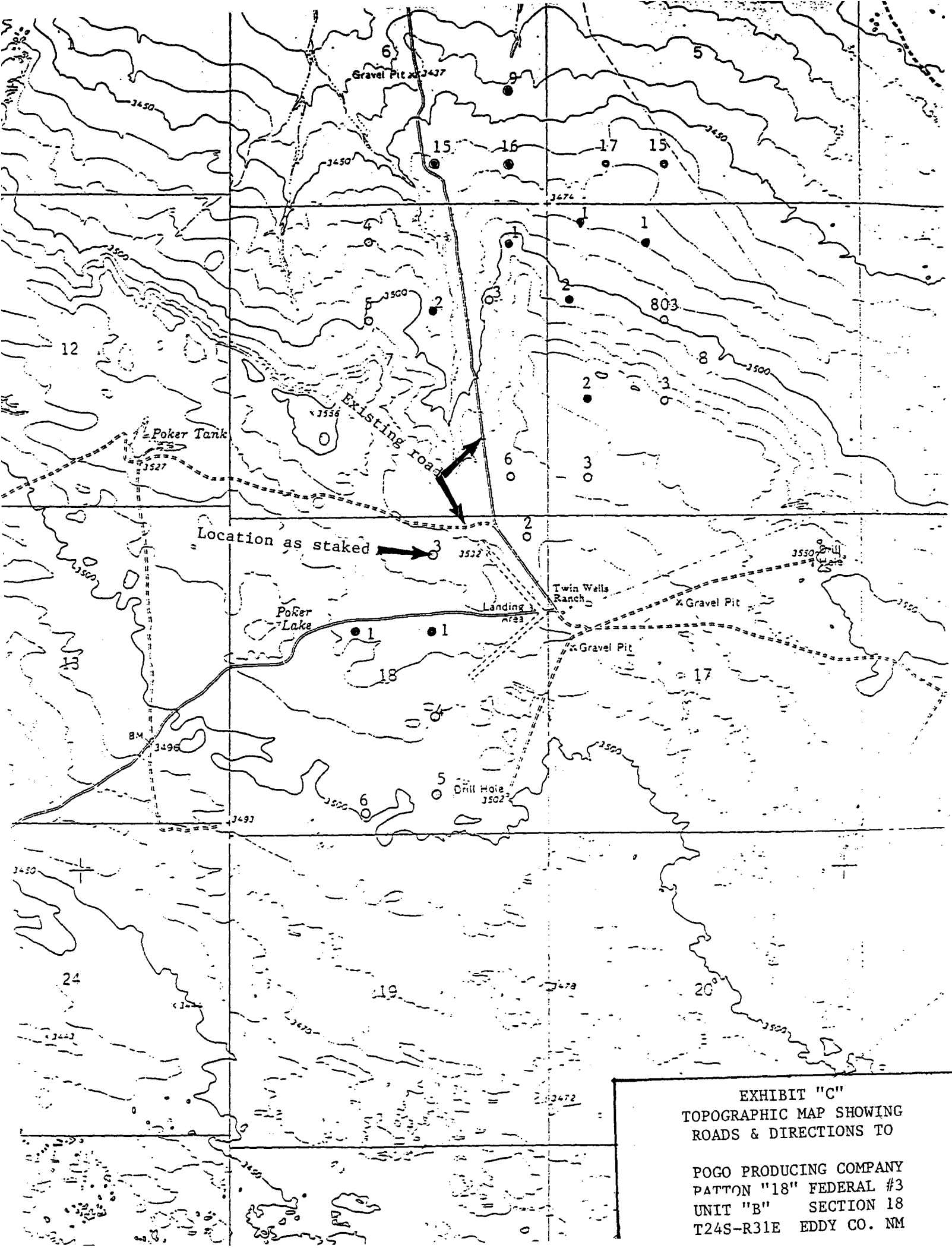
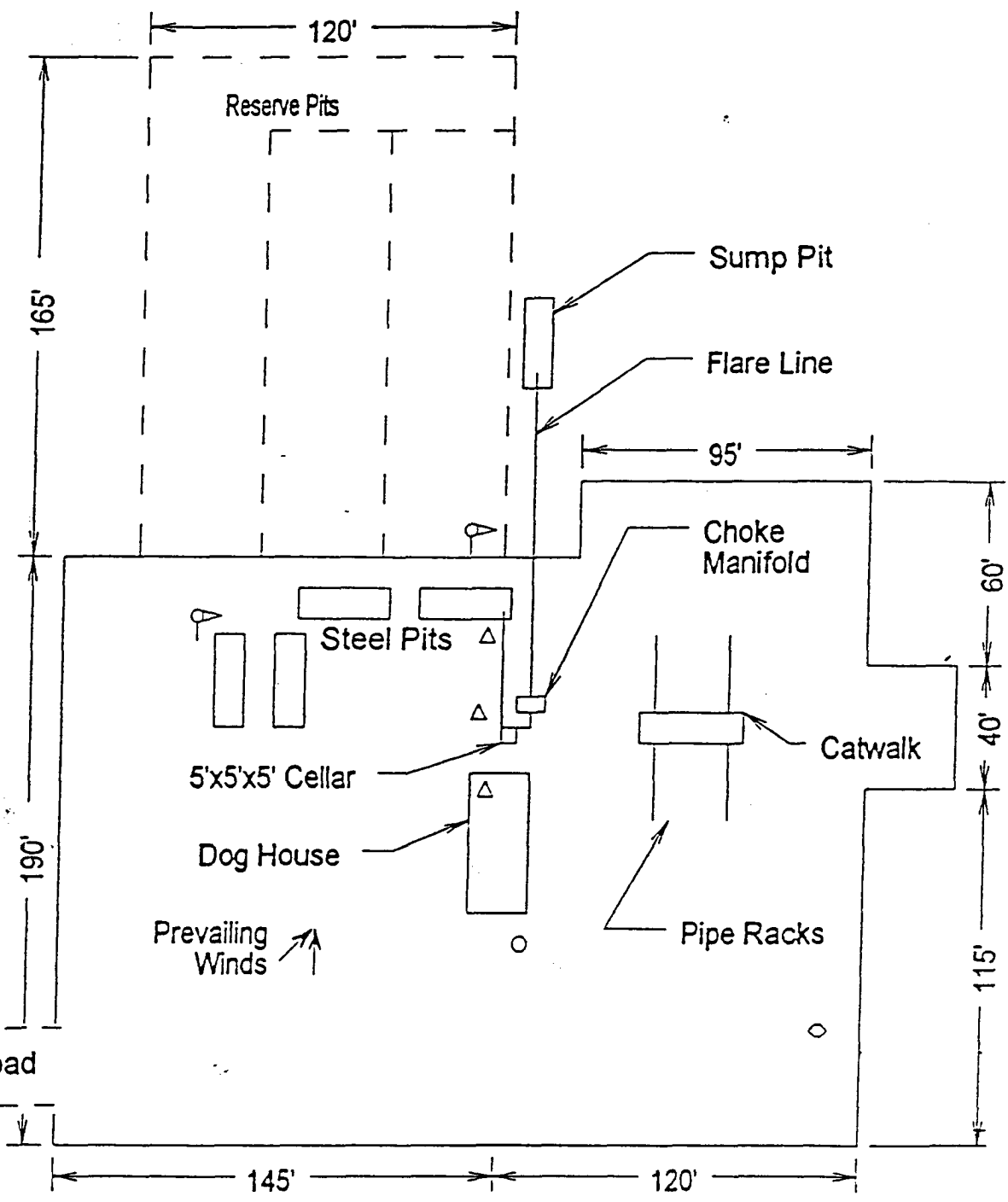


EXHIBIT "C"  
TOPOGRAPHIC MAP SHOWING  
ROADS & DIRECTIONS TO

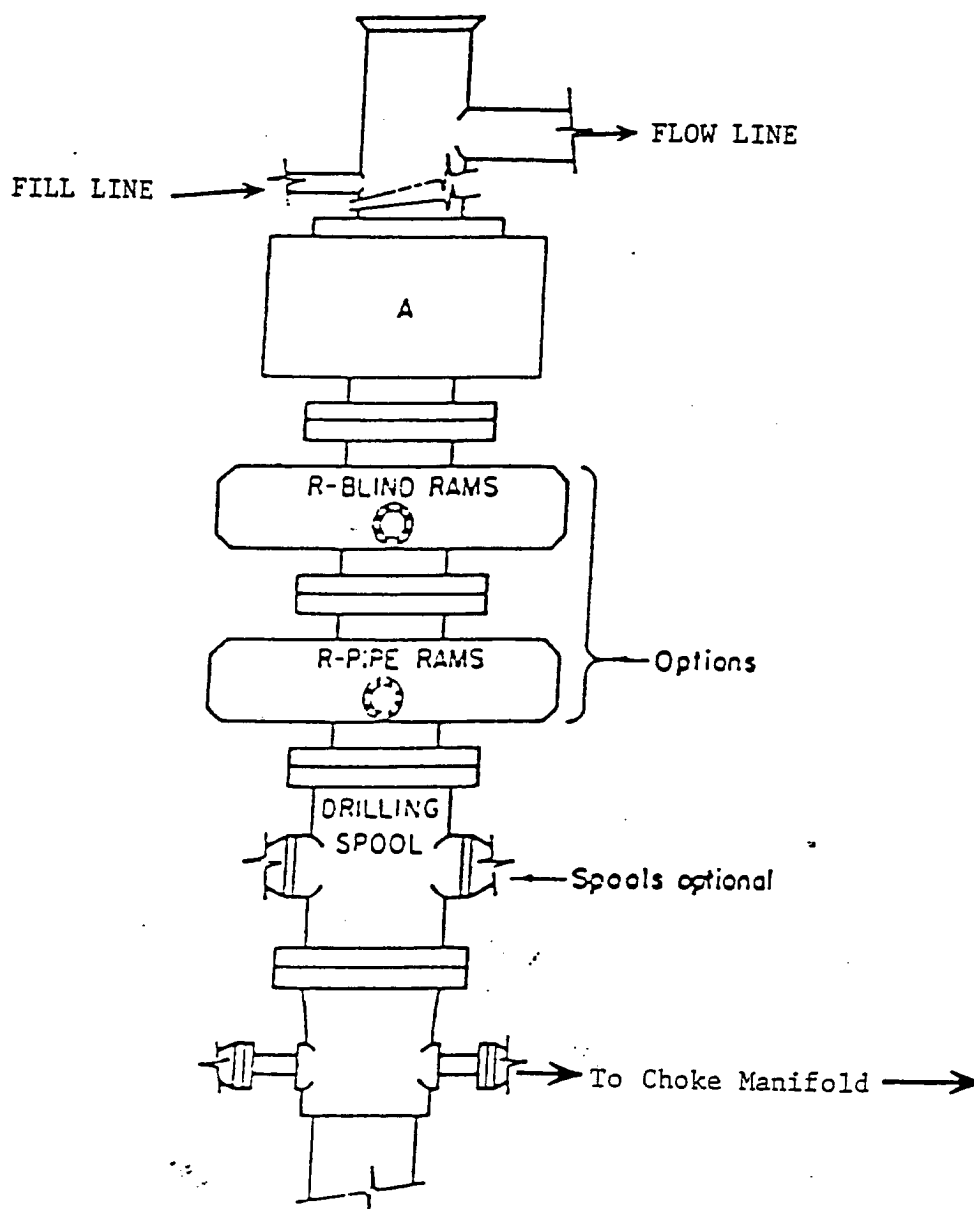
POGO PRODUCING COMPANY  
PATTON "18" FEDERAL #3  
UNIT "B" SECTION 18  
T24S-R31E EDDY CO. NM



- ⊙ Wind Direction Indicators (wind sock or streamers)
- △ H2S Monitors (alarms at bell nipple and shale shaker)
- Briefing Areas
- Remote BOP Closing Unit
- Sign and Condition Flags

EXHIBIT "D"  
RIG LAY OUT PLAT

POGO PRODUCING COMPANY  
PATTON "18" FEDERAL #3  
UNIT "B" SECTION 18  
T24S-R31E EDDY CO. NM

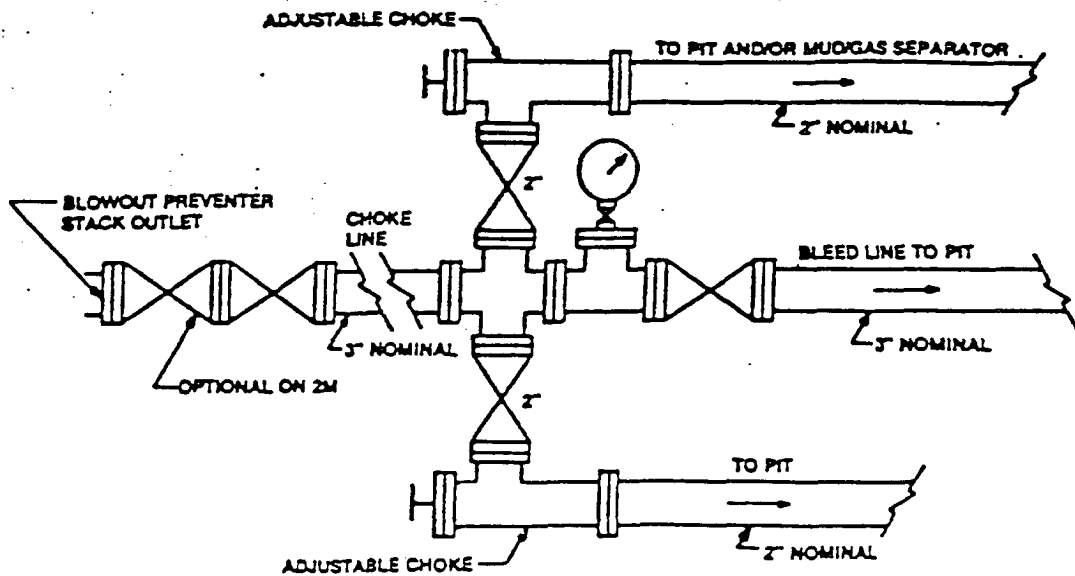


# ARRANGEMENT SRRA

900 Series  
3000 PSI WP

EXHIBIT "E"  
SKETCH OF B.O.P. TO BE USED ON

POGO PRODUCING COMPANY  
PATTON "18" FEDERAL #3  
UNIT "B" SECTION 18  
T24S-R31E EDDY CO. NM



Typical choke manifold assembly for 3M WP system

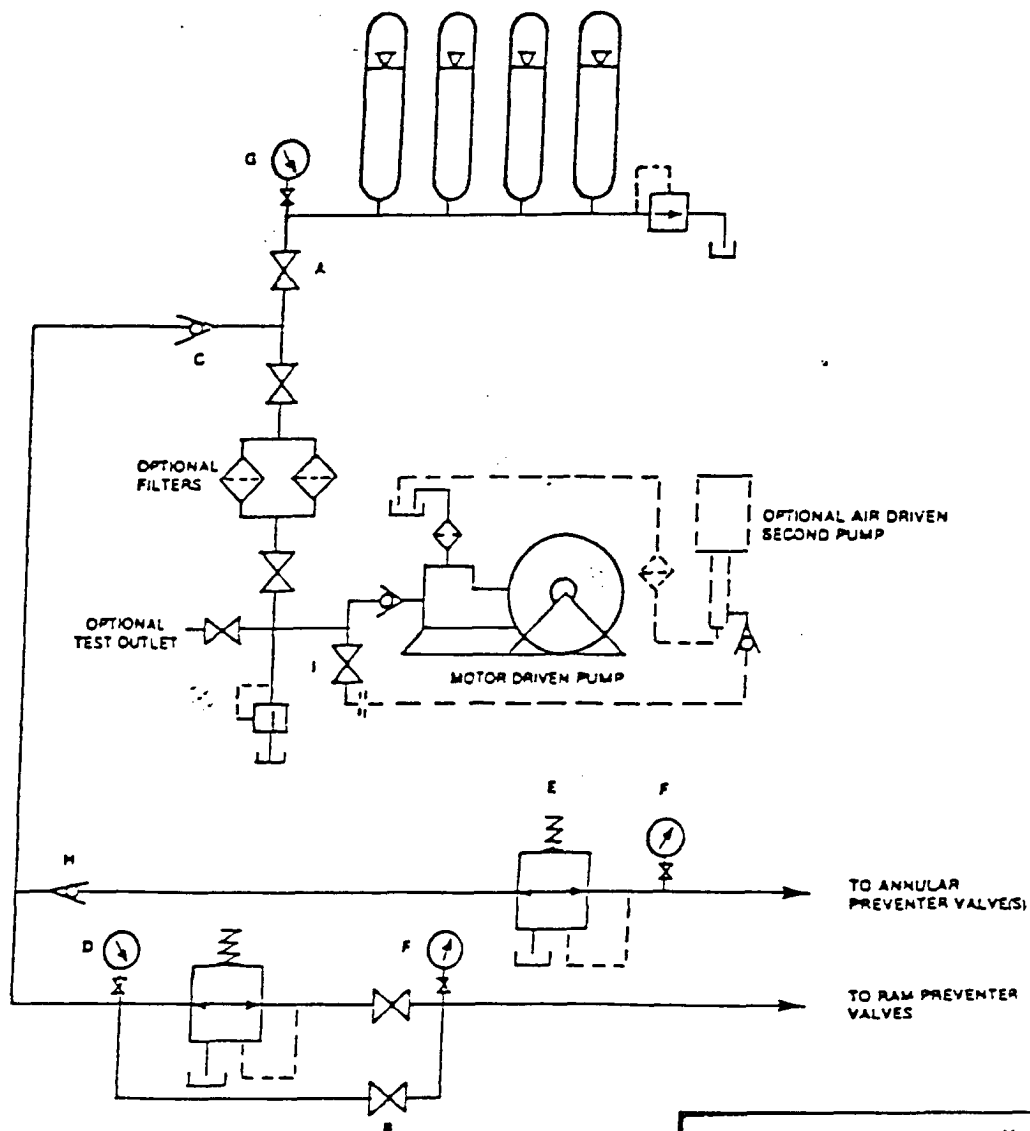
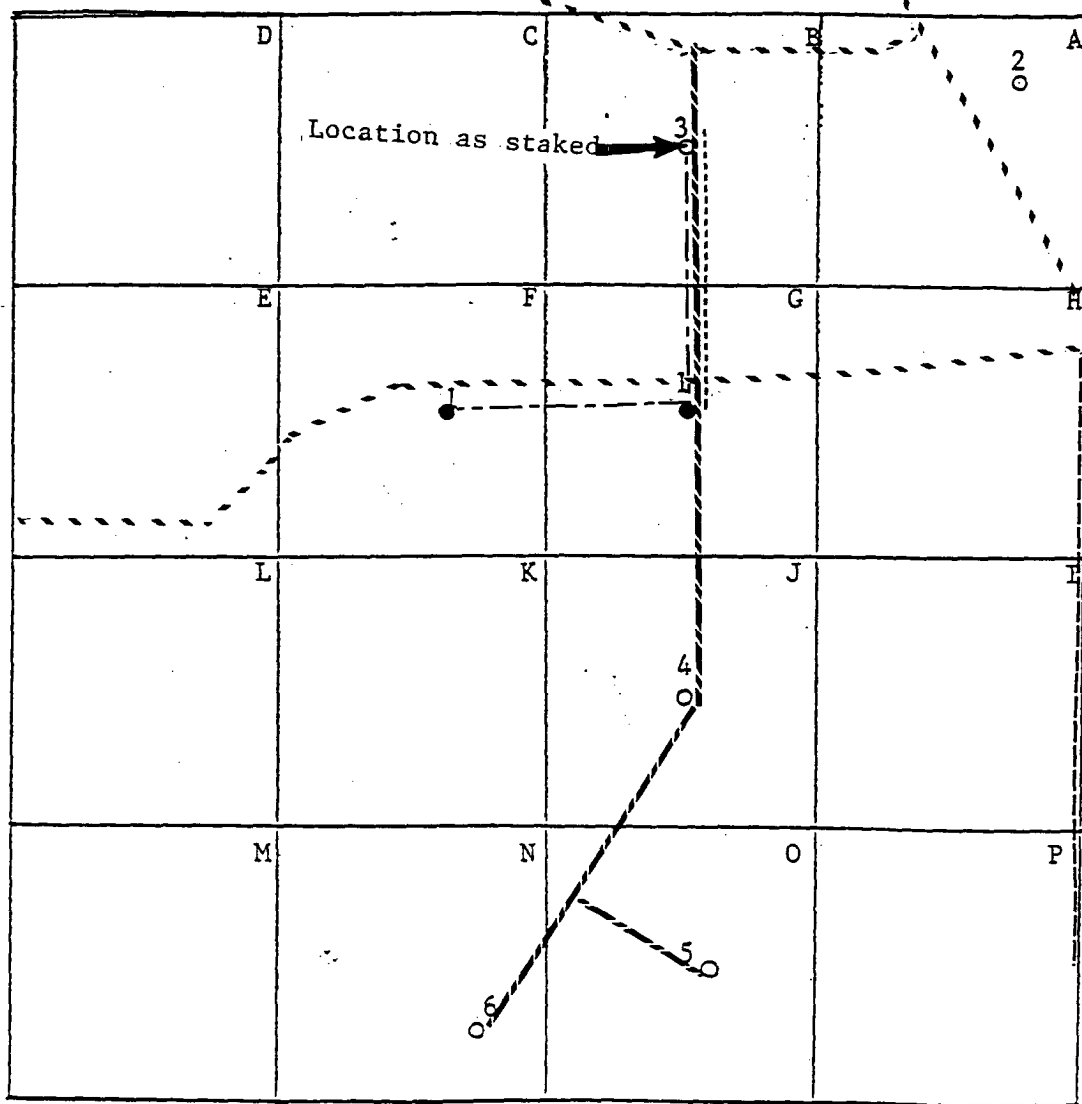


EXHIBIT "E-1"  
CHOKE MANIFOLD & CLOSING UNIT

POGO PRODUCING COMPANY  
PATTON "18" FEDERAL #3  
UNIT "B" SECTION 18  
T24S-R31E EDDY CO. NM



Existing Road      - - - - -  
 Proposed Road      - - - - -  
 Proposed Powerline      - - - - -  
 Proposed Flowline      - - - - -  
 Existing Powerline      - - - - -

EXHIBIT "F"  
 ROUTE OF PROPOSED  
 ROADS, FLOWLINES & POWERLINES

POGO PRODUCING COMPANY  
 PATTON "18" FEDERAL #3  
 UNIT "B"      SECTION 18  
 T24S-R31E      EDDY CO. NM