

District I  
1625 N. French Dr., Hobbs, NM 88240  
District II  
1301 W. Grand Avenue, Artesia, NM 88210  
District III  
1000 Rio Brazos Road, Aztec, NM 87410  
District IV  
1220 S. St. Francis Dr., Santa Fe, NM 87505

State of New Mexico  
Energy Minerals and Natural Resources

Form C-101  
Revised June 10, 2003

RECEIVED

Oil Conservation Division  
1220 South St. Francis Dr.  
Santa Fe, NM 87505

Submit to appropriate District Office  
State Lease - 6 Copies  
Fee Lease - 5 Copies

☐ AMENDED REPORT

APPLICATION FOR PERMIT TO DRILL, RE-ENTER, DEEPEN, PLUGBACK, OR ADD A ZONE

<sup>1</sup> Operator Name and Address Mewbourne Oil Company PO Box 5270 Hobbs, NM 88240		<sup>2</sup> OGRID Number 14744
<sup>3</sup> Property Code		<sup>3</sup> API Number 30 - 015 - 33485
<sup>5</sup> Property Name Cass Draw 30		<sup>6</sup> Well No. 1

<sup>7</sup> Surface Location

UL or lot no.	Section	Township	Range	Lot Idn	Feet from the	North/South line	Feet from the	East/West line	County
K	30	22S	28E		1980'	S	1980'	W	Eddy

<sup>8</sup> Proposed Bottom Hole Location If Differe

UL or lot no.	Section	Township	Range	Lot Idn	Feet from the	North/South
<sup>9</sup> Proposed Pool 1 Under Dublin Ranch Morrow						CEMENT TO COVER ALL OIL, GAS AND WATER BEARING ZONES

<sup>11</sup> Work Type Code N	<sup>12</sup> Well Type Code G	<sup>13</sup> Cable/Rotary R	<sup>14</sup> Lease Type Code P	<sup>15</sup> Ground Level Elevation 3053'
<sup>16</sup> Multiple No	<sup>17</sup> Proposed Depth 12550'	<sup>18</sup> Formation Morrow	<sup>19</sup> Contractor TBA	<sup>20</sup> Spud Date Upon OCD approval

<sup>21</sup> Proposed Casing and Cement Program

Hole Size	Casing Size	Casing weight/foot	Setting Depth	Sacks of Cement	Estimated TOC
17 1/2"	13 3/8"	48#	400' 300	500	Surface
12 1/4"	9 5/8"	40#	4500'	1400	Surface
8 3/4"	5 1/2"	17#	12550'	1000	8000'

22 Describe the proposed program. If this application is to DEEPEN or PLUG BACK, give the data on the present productive zone and proposed new productive zone. Describe the blowout prevention program, if any. Use additional sheets if necessary.

BOP Program: 2k Hydril (see Exhibit #2) from surface casing to intermediate TD. Schaffer LWS or equivalent (Double-Ram Hydraulic) 900 series with Hydril 900 Series (See Exhibit #2A) from intermediate casing to total depth. Rotating head, PVT, flow monitors and mud gas Separator from the Wolfcamp to TD.

Mud Program: 0' to 400' Fresh Water, spud mud, lime for PH and LCM as needed for seepage.

400' to 4500' Brine Water, lime for PH and LCM as needed for seepage.

4500' to 11500' Cut Brine Water, lime for PH and LCM as needed for seepage.

11500' to TD Cut Brine Water. 9.3+ #/g. Caustic for PH, Starch for WL control and LCM as needed for seepage

<sup>23</sup> I hereby certify that the information given above is true and complete to the best of my knowledge and belief.

Signature: M. Whetstone

Printed name: M Whetstone

Title: Vice President Operations

E-mail Address:

Date: 05-25-04

Phone: 505-393-5905

OIL CONSERVATION DIVISION

Approved by:

Title:

Approval Date:

Conditions of Approval:

Attached ☐

NOTIFY O.C.D. PRIOR  
TO CONSTRUCTION OF  
PIT(S)

District I  
1625 N. French Dr., Hobbs, NM 88240  
District II  
1301 W. Grand Avenue, Artesia, NM 88210  
District III  
1000 Rio Brazos Road, Aztec, NM 87410  
District IV  
1220 S. St. Francis Dr., Santa Fe, NM 87505

State of New Mexico  
Energy Minerals and Natural Resources

Form C-144  
March 12, 2004

Oil Conservation Division  
1220 South St. Francis Dr.  
Santa Fe, NM 87505

For drilling and production facilities, submit to  
appropriate NMOCD District Office.  
For downstream facilities, submit to Santa Fe  
office

**Pit or Below-Grade Tank Registration or Closure**

Is pit or below-grade tank covered by a "general plan"? Yes ☒ No ☐

Type of action: Registration of a pit or below-grade tank ☒ Closure of a pit or below-grade tank ☐

Operator: Mewbourne Oil Company Telephone: 505-393-5905 e-mail address: hobeng@mewbourne.com

Address: PO Box 5270 Hobbs, NM 88240

Facility or well name: Cass Draw "30" #1 API #: \_\_\_\_\_ U/L or Qtr/Qtr\_K \_\_\_\_\_ Sec 30 T 22S R 28E

County: Eddy Latitude 32-21-42.4N Longitude 104-07-41.7W NAD: 1927 ☐ 1983 ☒

Surface Owner Federal ☐ State ☐ Private ☒ Indian ☐

**Pit**

Type: Drilling ☒ Production ☐ Disposal ☐

Workover ☐ Emergency ☐

Lined ☒ Unlined ☐

Liner type: Synthetic ☒ Thickness 12 mil Clay ☐

Volume 24000 bbl

**Below-grade tank**

Volume: \_\_\_\_\_ bbl Type of fluid: \_\_\_\_\_

Construction material: \_\_\_\_\_

Double-walled, with leak detection? Yes ☐ If not, explain why not.

Depth to ground water (vertical distance from bottom of pit to seasonal  
high water elevation of ground water.)

Less than 50 feet ☒  
50 feet or more, but less than 100 feet  
100 feet or more

(20 points) ☒  
(10 points)  
( 0 points)

Wellhead protection area: (Less than 200 feet from a private domestic  
water source, or less than 1000 feet from all other water sources.)

Yes  
No ☒

(20 points)  
( 0 points) ☒

Distance to surface water: (horizontal distance to all wetlands, playas,  
irrigation canals, ditches, and perennial and ephemeral watercourses.)

Less than 200 feet ☒  
200 feet or more, but less than 1000 feet  
1000 feet or more

(20 points) ☒ (concrete/soil irrigation canal)  
(10 points)  
( 0 points)

**Ranking Score (Total Points)**

40 points

**If this is a pit closure:** (1) attach a diagram of the facility showing the pit's relationship to other equipment and tanks. (2) Indicate disposal location:

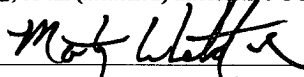
onsite ☐ offsite ☐ If offsite, name of facility \_\_\_\_\_. (3) Attach a general description of remedial action taken including remediation start date and end  
date. (4) Groundwater encountered: No ☐ Yes ☐ If yes, show depth below ground surface \_\_\_\_\_ ft. and attach sample results. (5) Attach soil sample results and a  
diagram of sample locations and excavations.

I hereby certify that the information above is true and complete to the best of my knowledge and belief. I further certify that the above-described pit or below-grade tank  
has been/will be constructed or closed according to NMOCD guidelines ☒, a general permit ☐, or an (attached) alternative OCD-approved plan ☐.

Date: 05/24/04

Printed Name/Title M Whetstone / Vice President Operations

Signature



Your certification and NMOCD approval of this application/closure does not relieve the operator of liability should the contents of the pit or tank contaminate ground water or  
otherwise endanger public health or the environment. Nor does it relieve the operator of its responsibility for compliance with any other federal, state, or local laws and/or  
regulations.

Approved:

Date:

Printed Name/Title

Signature

JUL 06 2004  
Field Rep ID



DISTRICT I  
1625 N. French Dr., Hobbs, NM 88240  
DISTRICT II  
811 South First, Artesia, NM 88210  
DISTRICT III  
1000 Rio Brazos Rd., Aztec, NM 87410  
DISTRICT IV  
2040 South Pacheco, Santa Fe, NM 87505

State of New Mexico  
Energy, Minerals and Natural Resources Department

Form C-102  
Revised March 17, 1999  
Instruction on back  
Submit to Appropriate District Office  
State Lease - 4 Copies  
Fee Lease - 3 Copies

OIL CONSERVATION DIVISION  
P.O. Box 2088  
Santa Fe, New Mexico 87504-2088

☐ AMENDED REPORT

WELL LOCATION AND ACREAGE DEDICATION PLAT

API Number	Pool Code	Pool Name Dublin Ranch Morrow
Property Code	Property Name CASS DRAW "30"	Well Number 1
OGRID No. 14744	Operator Name MEWBOURNE OIL COMPANY	Elevation 3053

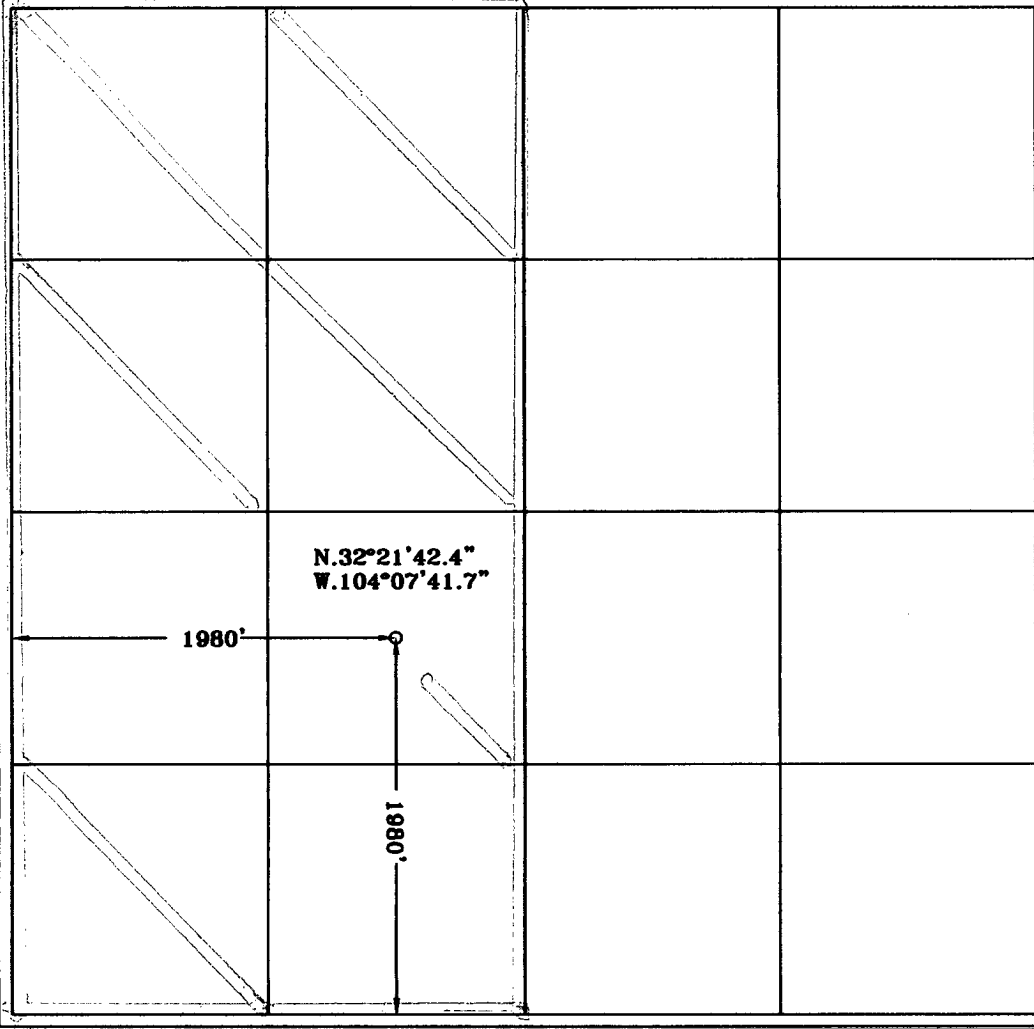


Surface Location

UL or lot No. K	Section 30	Township 22S	Range 28E	Lot Idn	Feet from the 1980	North/South line SOUTH	Feet from the 1980	East/West line WEST	County EDDY
--------------------	---------------	-----------------	--------------	---------	-----------------------	---------------------------	-----------------------	------------------------	----------------

Bottom Hole Location If Different From Surface

UL or lot No.	Section	Township	Range	Lot Idn	Feet from the	North/South line	Feet from the	East/West line	County
Dedicated Acres 320		Joint or Infill	Consolidation Code	Order No.					

NO ALLOWABLE WILL BE ASSIGNED TO THIS COMPLETION UNTIL ALL INTERESTS HAVE BEEN CONSOLIDATED  
OR A NON-STANDARD UNIT HAS BEEN APPROVED BY THE DIVISION

	<b>OPERATOR CERTIFICATION</b> <i>I hereby certify the the information contained herein is true and complete to the best of my knowledge and belief.</i>  Signature M Whetstone Printed Name Vice President Operations Title 05/25/04 Date
	<b>SURVEYOR CERTIFICATION</b> <i>I hereby certify that the well location shown on this plat was plotted from field notes of actual surveys made by me or under my supervision, and that the same is true and correct to the best of my belief.</i> 3/11/2004 Date Surveyed Signature & Seal of Professional Surveyor  Certificate No. Herschel Jones RLS 3640 CASS DRAW 30 GENERAL SURVEYING COMPANY

## **Hydrogen Sulfide Drilling Operations Plan**

### **Mewbourne Oil Company**

Cass Draw "30" #1

1980' FSL & 1980' FWL

Section 30-T22S-R28E

Eddy County, New Mexico

#### **1. Hydrogen Sulfide Training**

All personnel, whether regularly assigned, contracted, or employed on an unscheduled basis, will have received training from a qualified instructor in the following areas prior to entering the drilling pad area of the well:

- 1 The hazards and characteristics of hydrogen sulfide gas.
- 2 The proper use of personal protective equipment and life support systems.
- 3 The proper use of hydrogen sulfide detectors, alarms, warning systems, briefing areas, evacuation procedures.
- 4 The proper techniques for first aid and rescue operations.

Additionally, supervisory personnel will be trained in the following areas:

- 1 The effects of hydrogen sulfide on metal components. If high tensile tubular systems are utilized, supervisory personnel will be trained in their special maintenance requirements.
- 2 Corrective action and shut in procedures, blowout prevention, and well control procedures while drilling a well.
- 3 The contents of the Hydrogen Sulfide Drilling Operations Plan.

There will be an initial training session prior to encountering a known hydrogen sulfide source. The initial training session shall include a review of the site specific Hydrogen Sulfide Drilling Operations Plan.

#### **2. Hydrogen Sulfide Safety Equipment and Systems**

All hydrogen sulfide safety equipment and systems will be installed, tested, and operational prior to drilling below the intermediate casing.

##### **1. Well Control Equipment**

- A. Flare line with automatic igniter or continuous ignition source.
- B. Choke manifold with minimum of one adjustable choke.
- C. Blowout preventers equipped with blind rams and pipe rams to accommodate all pipe sizes with properly sized closing unit
- D. Auxiliary equipment including rotating head and annular type blowout preventer.

2. Protective Equipment for Essential Personnel

Thirty minute self contained work unit located at briefing area as indicated on wellsite diagram.

3. Hydrogen Sulfide Protection and Monitoring Equipment

Two portable hydrogen sulfide monitors positioned on location for optimum coverage and detection. The units shall have audible sirens to notify personnel when hydrogen sulfide levels exceed 20 ppm.

4. Visual Warning Systems

A. Wind direction indicators as indicated on the wellsite diagram.

B. Caution signs shall be posted on roads providing access to location. Signs shall be painted a high visibility color with lettering of sufficient size to be readable at reasonable distances from potentially contaminated areas.

3. **Mud Program**

The mud program has been designed to minimize the amount of hydrogen sulfide entrained in the mud system. Proper mud weight, safe drilling practices, and the use of hydrogen sulfide scavengers will minimize hazards while drilling the well.

4. **Metallurgy**

All tubular systems, wellheads, blowout preventers, drilling spools, kill lines, choke manifolds, and valves shall be suitable for service in a hydrogen sulfide environment when chemically treated.

5. **Communications**

State & County Officials phone numbers are posted on rig floor and supervisors trailer. Communications in company vehicles and toolpushers are either two way radios or cellular phones.

6. **Well Testing**

Drill stem testing is not an anticipated requirement for evaluation of this well. A drill stem test is required, it will be conducted with a minimum number of personnel in the immediate vicinity. The test will be conducted during daylight hours only.

7. **General Requirements**

MOC has researched this area and no high concentrations of H<sub>2</sub>S was found. MOC will have on location and working all H<sub>2</sub>S safety equipment before Glorietta formation at 2200'.

Mewbourne Oil Company  
BOP Scematic for  
12 1/4" Hole

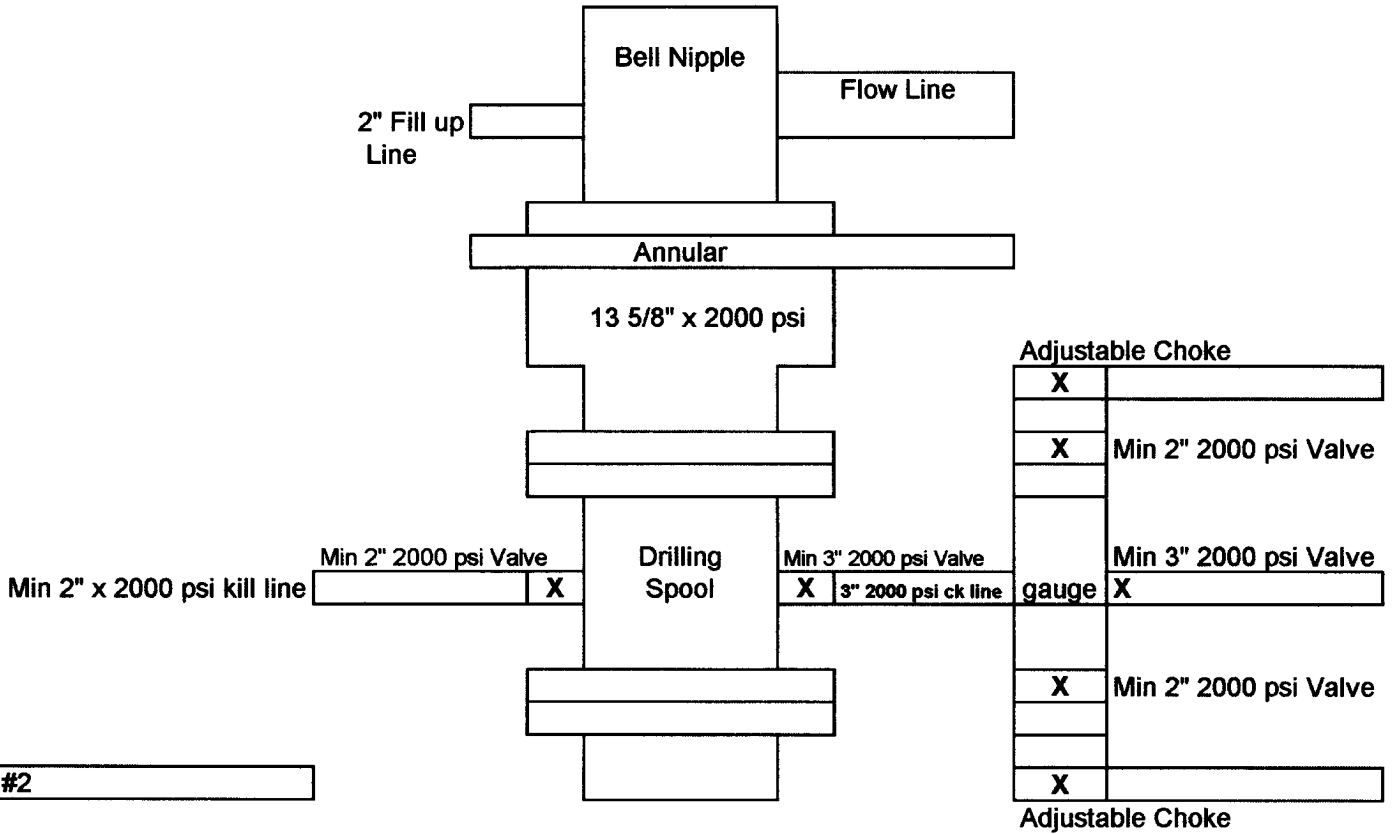


Exhibit #2

Cass Draw "30" #1  
Sec. 30-T22S-R28E  
1980' FSL & 1980' FWL  
Eddy County, NM

Mewbourne Oil Company  
 BOP Schematic for  
 8 3/4" or 7 7/8" Hole

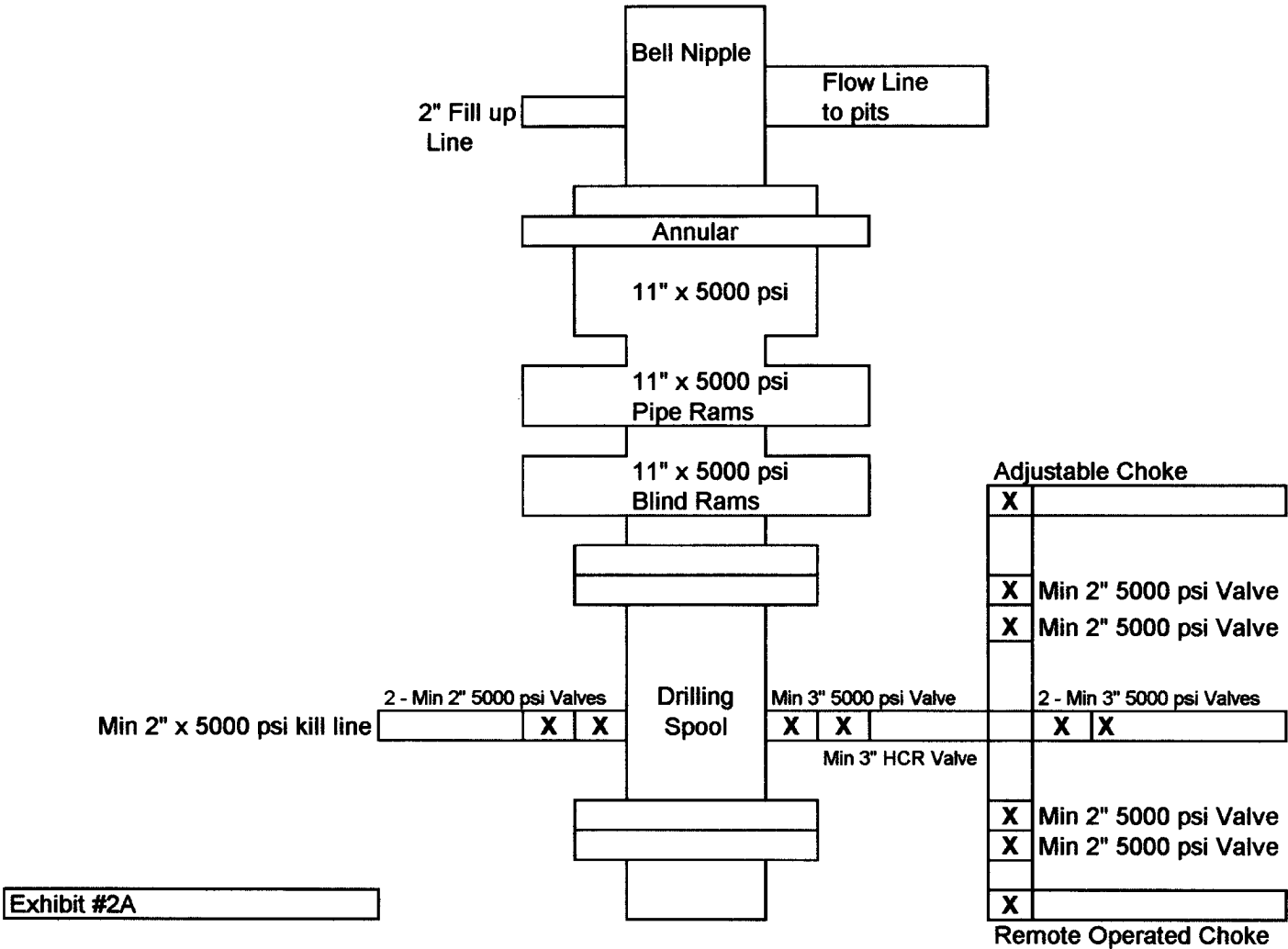
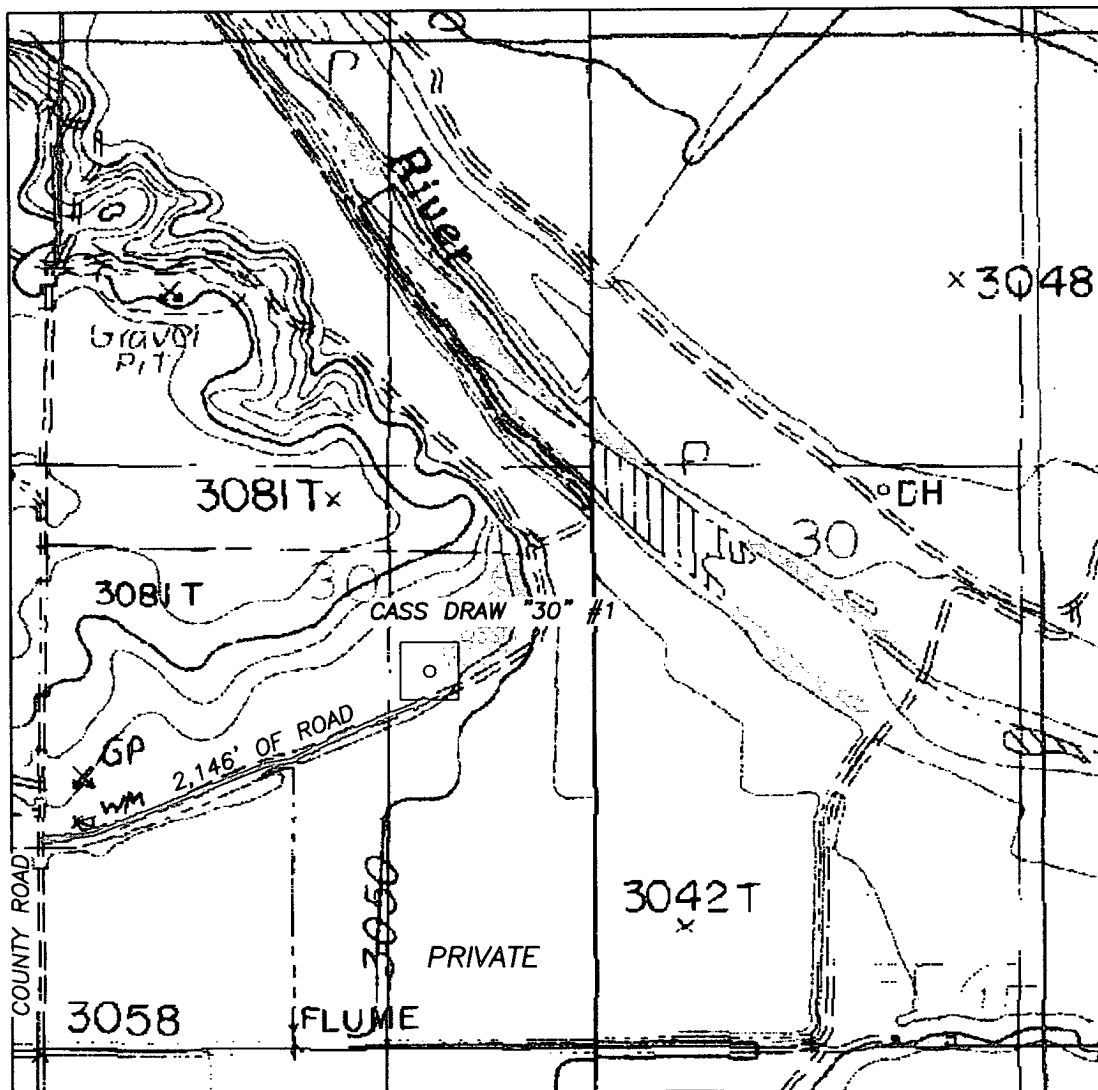


Exhibit #2A

Cass Draw "30" #1  
 Sec. 30-T22S-R28E  
 1980' FSL & 1980' FWL  
 Eddy County, NM

SECTION 30, TOWNSHIP 22 SOUTH, RANGE 28 EAST, NMPM, EDDY COUNTY, NEW MEXICO.



1000' 0 1000' 2000'  
Scale 1" = 1000'

THE PREPARATION OF THIS PLAT AND THE PERFORMANCE OF THE SURVEY UPON WHICH IT IS BASED WERE DONE UNDER MY DIRECTION AND THE PLAT ACCURATELY DEPICTS THE RESULTS OF SAID SURVEY AND MEET THE REQUIREMENTS OF THE STANDARDS FOR LAND SURVEYS IN NEW MEXICO AS ADOPTED BY THE NEW MEXICO STATE BOARD OF REGISTRATION FOR PROFESSIONAL ENGINEERS AND LAND SURVEYORS.

*Herschel L. Jones*  
3640  
HERSCHEL L. JONES, P.E. No. 3640  
GENERAL SURVEYING COMPANY P.O. BOX 1928  
LOVINGTON, NEW MEXICO 88260

## MEWBOURNE OIL COMPANY

LEASE ROAD TO ACCESS THE MEWBOURNE CASS DRAW "30" #1 WELL, LOCATED IN SECTION 30, TOWNSHIP 22 SOUTH, RANGE 28 EAST, NMPM, EDDY COUNTY, NEW MEXICO.

Survey Date: 3/11/2004	Sheet 1 of 1 Sheets
Drawn By: Ed Blevins	W.O. Number
Date: 3/11/04	Scale 1" = 1000' CASS DRAW