

Submit to Appropriate  
District Office  
State Lease - 6 copies  
Fee Lease - 5 copies  
**DISTRICT I**  
P.O. Box 1980, Hobbs, NM 88240

State of New Mexico  
Energy, Minerals and Natural Resources Department

Form C-105  
Revised 1-1-89

**OIL CONSERVATION DIVISION**

2040 South Pacheco  
Santa Fe, New Mexico 87505

**DISTRICT II**  
811 South First, Artesia, NM 88210

**DISTRICT III**  
1000 Rio Brazos Rd., Aztec, NM 87410

WELL API NO.

30-005-63634

5. Indicate Type of Lease

STATE ☒ FEE ☐

6. State Oil & Gas Lease No.

VA-2846

**WELL COMPLETION OR RECOMPLETION REPORT AND LOG**

1. Type of Well:

OIL WELL ☐ GAS WELL ☒ DRY ☐ OTHER \_\_\_\_\_

b. Type of Completion:

NEW WELL ☒ WORK OVER ☐ Deepen ☐ PLUG BACK ☐ DIFF RESVR ☐ OTHER \_\_\_\_\_

2. Name of Operator

Mack Energy Corporation

3. Address of Operator

P.O. Box 960, Artesia, NM 88211-0960

4. Well Location

Unit Letter F : 1980 Feet From The North Line and 1980 Feet From The West Line

Section 16 Township 15S Range 22E NMPM Chaves County

10. Date Spudded

3/6/2004

11. Date TD Reached

4/5/2004

12. Date Compl. (Ready to Prod.)

13. Elevations (DF & RKB, RT, GR, etc.)

4054' RKB

14. Elev. Casinghead

4038'

15. Total Depth

6030

16. Plug Back TD

5495

17. If Multiple Compl. How Many Zones?

18. Intervals Drilled By

Rotary Tools

Yes

Cable Tools

19. Producing Interval(s), of this completion - Top, Bottom, Name

20. Was Directional Survey Made

Yes

21. Type Electric and Other Logs Run

Gamma Ray, Neutron, Density, Lateralog, Spectral Gamma Ray

22. Was Well Cored

No

23.

**CASING RECORD (Report all strings set in well)**

CASING SIZE	WEIGHT LB./FT.	DEPTH SET	HOLE SIZE	CEMENTING RECORD	AMOUNT PULLED
9 5/8	40	1029	14 3/4	1143 sx	None
4 1/2	10.5	6030	7 7/8	480 sx	None

24. **LINER RECORD**

SIZE	TOP	BOTTOM	SACKS CEMENT	SCREEN

25. **TUBING RECORD**

SIZE	DEPTH SET	PACKER SET

26. Perforation record (interval, size, and number)

5819-5958.5', .45, 25      5658.5-5777', .45, 25  
5501.5-5606', .45, 25      5408-5468.5', .45, 16

27. ACID, SHOT, FRACTURE, CEMENT, SQUEEZE, ETC.

DEPTH INTERVAL      AMOUNT AND KIND MATERIAL USED  
See Detail on C-103

28. **PRODUCTION**

Date First Production	Production Method (Flowing, gas lift, pumping - Size and type pump)					Well Status (Prod. or Shut-in)	
N/A						Shut-in	
Date of Test	Hours Tested	Choke Size	Prod'n For Test Period	Oil - Bbl.	Gas - MCF	Water - Bbl.	Gas - Oil Ratio
Flow Tubing Press.	Casing Pressure	Calculated 24-Hour Rate	Oil - Bbl.	Gas - MCF	Water - Bbl.	Oil Gravity - API - (Corr.)	

29. Disposition of Gas (Sold, used for fuel, vented, etc.)

Test Witnessed By

30. List Attachments

Deviation Survey and Logs

31. I hereby certify that the information shown on both sides of this form is true and complete to the best of my knowledge and belief

Signature Jerry W. Sherrell Printed Name Jerry W. Sherrell Title Production Clerk Date 7/20/2004

## INSTRUCTIONS

This form is to be filed with the appropriate District Office of the Division not later than 20 days after the completion of any newly-drilled or deepened well. It shall be accompanied by one copy of all electrical and radio-activity logs run on the well and a summary of all special tests conducted, including drill stem tests. All depths reported shall be measured depths. In the case of directionally drilled wells, true vertical depths shall also be reported. For multiple completions, Items 25 through 29 shall be reported for each zone. The form is to be filed in quintuplicate except on state land, where six copies are required. See Rule 1105.

INDICATE FORMATION TOPS IN CONFORMANCE WITH GEOGRAPHICAL SECTION OF STATE

Southeastern New Mexico    Northwestern New Mexico

T. Anhy _____	T. Canyon _____	T. Ojo Alamo _____	T. Penn. "B" _____
T. Salt _____	T. Strawn _____	T. Kirtland-Fruitland _____	T. Penn. "C" _____
B. Salt _____	T. Atoka _____	T. Pictured Cliffs _____	T. Penn. "D" _____
T. Yates _____	T. Miss _____	T. Cliff House _____	T. Leadville _____
T. 7 Rivers _____	T. Devonian _____	T. Menefee _____	T. Madison _____
T. Queen _____	T. Silurian _____	T. Point Lookout _____	T. Elbert _____
T. Grayburg _____	T. Montoya _____	T. Mancos _____	T. McCracken _____
T. San Andres _____	T. Simpson _____	T. Gallup _____	T. Ignacio Otzte _____
T. Glorieta _____ 1027	T. McKee _____	Base Greenhorn _____	T. Granite _____
T. Paddock _____	T. Ellenburger _____ 5397	T. Dakota _____	T. _____
T. Blinebry _____	T. Gr. Wash _____	T. Morrison _____	T. _____
T. Tubb _____	T. Delaware Sand _____	T. Todilto _____	T. _____
T. Drinkard _____	T. Bone Springs _____	T. Entrada _____	T. _____
T. Abo _____ 3154	T. Precambrian _____ 5496	T. Wingate _____	T. _____
T. Wolfcamp _____ 3468	T. _____	T. Chinle _____	T. _____
T. Penn _____	T. _____	T. Permian _____	T. _____
T. Cisco (Bough C) _____	T. _____	T. Penn "A" _____	T. _____

## OIL OR GAS SANDS OR ZONES

No. 1, from.....to.....  
No. 2, from.....to.....  
No. 3, from.....to.....  
No. 4, from.....to.....

## IMPORTANT WATER SANDS

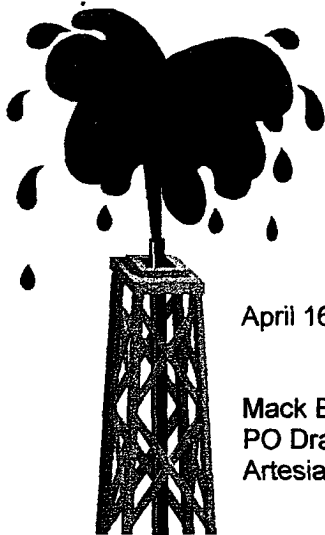
Include data on rate of water inflow and elevation to which water rose in hole.

No. 1, from ..... to ..... feet.....  
 No. 2, from ..... to ..... feet.....  
 No. 3, from ..... to ..... feet.....

## LITHOLOGY RECORD (Attach additional sheet if necessary)

From	To	Thickness in Feet	Lithology

From	To	Thickness in Feet	Lithology



# Artesia Fishing Tool Co., Inc.

Oil Well Drilling Contractors  
PO Box 1370 Artesia, NM 88211-1370  
505/746-6651 746-3518 fax 748-2205

April 16, 2004

Mack Energy Corporation  
PO Drawer 960  
Artesia, NM 88211-0960

RE: Bruins State #1  
1980' FNL & 1980' FWL  
Sec. 16, T15S, R22E  
Chaves County, New Mexico

Gentlemen:

The following is a Deviation Survey for the above captioned well.

DEPTH	DEVIATION	DEPTH	DEVIATION
187'	1°	3186'	1°
615'	1°	3655'	1°
1010'	3/4°	3920'	1°
1208'	3/4°	4372'	1/2°
1547'	1/4°	4869'	1/2°
2010'	3/4°	5098'	3/4°
2442'	1°	5522'	1 1/4°
2940'	1 1/4°	6030'	1 3/4°

Very truly yours,

Eddie C. LaRue  
Vice President

STATE OF NEW MEXICO }  
COUNTY OF EDDY }

The foregoing was acknowledged before me  
this 16<sup>th</sup> day of April, 2004.

  
Notary Public

RECEIVED

JUL 20 2004

OCD-ARTESIA



04-1279

*Serving Southeast New Mexico and West Texas Since 1974*