

marbob
ENERGY CORPORATION
ARTESIA, NEW MEXICO

June 15, 2004

Oil Conservation Division
1301 W. Grand Ave.
Artesia, NM 88210

Attention: Bryan Arrant

Re: ³⁰⁻⁰¹⁵⁻³³⁴⁷⁶ Zonked State #1
660' FSL & 1650' FWL
Section 2, T21S, R24E
Eddy County, New Mexico

Dear Bryan:

We plan to complete the above referenced well in the Morrow formation, which is sweet, and we don't anticipate cutting any formations that contain H₂S gas during the drilling of this well. Therefore, we do not believe that an H₂S contingency plan is necessary.

If you have questions or need further information, please call.

Sincerely,

Melanie J. Parker
Land Department

/mp

DISTRICT II
P.O. Drawer DD, Artesia, NM 88211-0719

OIL CONSERVATION DIVISION

P.O. Box 2088

Santa Fe, New Mexico 87504-2088

DISTRICT III
1000 Rio Brazos Rd., Aztec, NM 87410

DISTRICT IV
P.O. BOX 2088, SANTA FE, N.M. 87504-2088

WELL LOCATION AND ACREAGE DEDICATION PLAT

☐ AMENDED REPORT

API Number	Pool Code	Pool Name
	97031	Cemetery; Morrow; Southeast (G)
Property Code	Property Name	Well Number
	ZONKED STATE	1
OGRID No.	Operator Name	Elevation
14049	MARBOB ENERGY CORPORATION	3863'

Surface Location

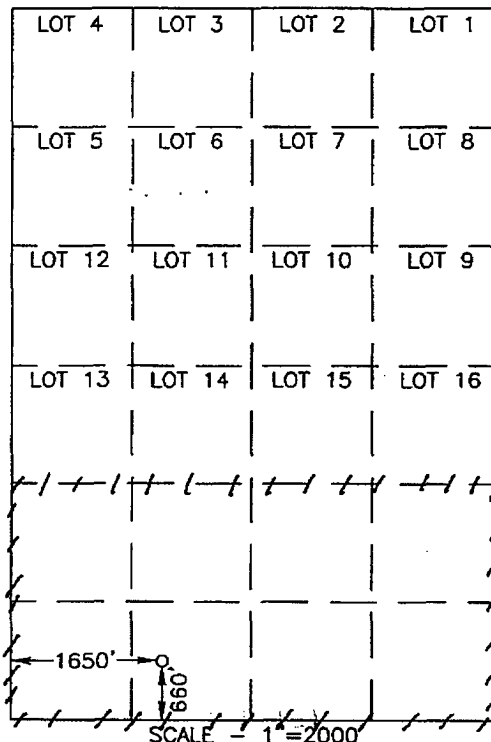
UL or lot No.	Section	Township	Range	Lot Idn	Feet from the	North/South line	Feet from the	East/West line	County
N	2	21-S	24-E		660'	SOUTH	1650'	WEST	EDDY

Bottom Hole Location If Different From Surface

UL or lot No.	Section	Township	Range	Lot Idn	Feet from the	North/South line	Feet from the	East/West line	County
---------------	---------	----------	-------	---------	---------------	------------------	---------------	----------------	--------

Dedicated Acres	Joint or Infill	Consolidation Code	Order No.
320			

NO ALLOWABLE WILL BE ASSIGNED TO THIS COMPLETION UNTIL ALL INTERESTS HAVE BEEN CONSOLIDATED
OR A NON-STANDARD UNIT HAS BEEN APPROVED BY THE DIVISION



GEODETIC COORDINATES
 NAD 27 NME
 Y = 546939.0 N
 X = 457166.3 E
 LAT. - 32°30'12.85"N
 LONG. - 104°28'20.18"W

OPERATOR CERTIFICATION

I hereby certify the the information
contained herein is true and complete to the
best of my knowledge and belief.

Signature

Melanie J. Parker

Printed Name

Land Department

Title

June 23, 2004

Date

SURVEYOR CERTIFICATION

I hereby certify that the well location shown on this plat was plotted from field notes of actual surveys made by me or under my supervision, and that the same is true and correct to the best of my belief.

MAY 12, 2004

Date Surveyed 2/2/77 JR

Signature & Seal of
Professional Surveyor

NEW MEXICO

100

David G. Bell

04 11 05

10441.03

Certificate No. GARY E

PROFESSIONAL
