

Submit 3 Copies To Appropriate District
Office
District I
1625 N. French Dr., Hobbs, NM 88240
District II
1301 W. Grand Ave., Artesia, NM 88210
District III
1000 Rio Brazos Rd., Aztec, NM 87410
District IV
1220 S. St. Francis Dr., Santa Fe, NM
87505

State of New Mexico
Energy, Minerals and Natural Resources

Form C-103
Revised June 10, 2003

OIL CONSERVATION DIVISION
1220 South St. Francis Dr.
Santa Fe, NM 87505

WELL API NO.
30-015-24789

5. Indicate Type of Lease
STATE ☒ FEE ☐

6. State Oil & Gas Lease No.
0428854

7. Lease Name or Unit Agreement Name
Burton Flat Deep Unit

8. Well Number
27

9. OGRID Number
169355

10. Pool name or Wildcat
Undesignated Fenton/Delaware NE

SUNDRY NOTICES AND REPORTS ON WELLS

(DO NOT USE THIS FORM FOR PROPOSALS TO DRILL OR TO DEEPEN OR PLUG BACK TO A
DIFFERENT RESERVOIR. USE "APPLICATION FOR PERMIT" (FORM C-101) FOR SUCH
PROPOSALS.)

1. Type of Well:
Oil Well ☒ Gas Well ☐ Other

2. Name of Operator
Devon Energy Production Company, LP

3. Address of Operator
20 North Broadway, Suite 1500, Oklahoma City, Oklahoma 73102

4. Well Location

Unit Letter G : 1612' feet from the North line and 1980' feet from the East line

Section 2 Township 21S Range 27E Eddy County

11. Elevation (Show whether DR, RKB, RT, GR, etc.)
3195' GR

12. Check Appropriate Box to Indicate Nature of Notice, Report or Other Data

NOTICE OF INTENTION TO:

PERFORM REMEDIAL WORK ☐ PLUG AND ABANDON ☒

TEMPORARILY ABANDON ☐ CHANGE PLANS ☐

PULL OR ALTER CASING ☐ MULTIPLE COMPLETION ☐

OTHER: ☐

SUBSEQUENT REPORT OF:

REMEDIAL WORK ☐ ALTERING CASING ☐

COMMENCE DRILLING OPNS. ☐ PLUG AND ABANDONMENT ☐

CASING TEST AND CEMENT JOB ☐

OTHER: ☐

13. Describe proposed or completed operations. (Clearly state all pertinent details, and give pertinent dates, including estimated date of starting any proposed work). SEE RULE 1103. For Multiple Completions: Attach wellbore diagram of proposed completion or recompletion.

1. Pull existing 2-7/8" production tubing from well.
2. Set CIBP at 2710' and dump bail 35' cement on top.
3. Circulate wellbore with 9.0# ppg mud.
4. Set 150' cement plug from 2498' to 2648'. WOC. Tag plug.
5. Cut 5-1/2' casing at 600' and POOH. (Temp Survey shows TOC @ 680'.)
6. Set 155' cement plug from 525' to 680'. WOC. Tag plug.
7. Set 60' cement surface plug. WOC.
8. Cut casings off 3' below ground level. Set P&A marker.
9. Restore location.

Note: Cement class "C" at 14.8 ppg with a yield of 1.32 cu. ft/sx.

I hereby certify that the information above is true and complete to the best of my knowledge and belief.

SIGNATURE Ronnie G. Slack

TITLE: Engineering Technician

DATE 12/14/04

Type or print name Ronnie G. Slack

E-mail address: Ronnie.Slack@dvn.com

Telephone No. 405-552-4615

(This space for State use)

APPROVED BY Phil Hankins

TITLE Field Supervisor

DATE 12/17/04

Conditions of approval, if any:

DEVON ENERGY PRODUCTION COMPANY LP

Well Name: Burton Flat Deep Unit #27		Field: Burton Flat	
Location: 1612' FNL & 1980' FEL, 2-T21S-R27E, UL "G"		County: EDDY	State: NM
Elevation: 3195' GR		Spud Date: 4/20/84	Compl Date: 5/25/84
API#: 30-015-24789	Prepared by: Ronnie Slack	Date: 12/13/04	Rev:

PROPOSED P&A

17-1/2" hole
13-3/8", H40, 48#, @ 600'
 Cmt'd w/500 sx to surface

TOC @ 680' per Temp survey

12-1/4" hole
8-5/8", 24#, @ 2573'
 Cmt'd w/1400 sx to surface.

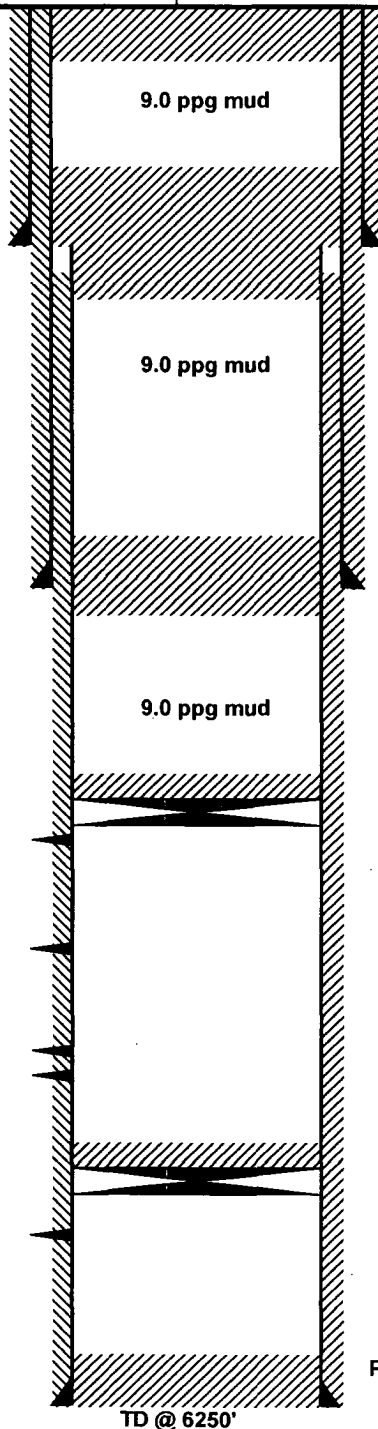
Delaware
 2744' - 2768' (3/13/02) Wet
 acidized w/1000 gals

Delaware
 2926' - 2940' (3/13/02) Wet
 acidized w/500 gal

Delaware
 3000' - 3014' (3/26/03) Wet
 3032' - 3050' (3/26/03) Wet
 acidized w/2500 gal

BONE SPRING
 5395' - 5420'

7-7/8" Hole
5-1/2", 17#, @ 6250'
 Cmt'd w/975 sx. TOC @ 680' per Temp survey



Proposed:
 Set 60' surface plug.
 WOC. Cut wellhead off & install P&A marker.

Proposed:
 Cut 5-1/2" casing @ 600' & POOH
 Set 155' cement plug from 525' to 680'
 WOC & Tag

Proposed:
 Set 150' cement plug from 2498' to 2648'
 WOC & Tag

Proposed:
 Set CIBP @ 2710'. Cap w/ 35' cement.

CIBP @ 5300', w/35' cement on top (3/13/02)

PBD @ 6191'

TD @ 6250'

DEVON ENERGY PRODUCTION COMPANY LP

Well Name: Burton Flat Deep Unit #27		Field: Burton Flat	
Location: 1612' FNL & 1980' FEL, 2-T21S-R27E, UL "G"		County: EDDY	State: NM
Elevation: 3195' GR		Spud Date: 4/20/84	Compl Date: 5/25/84
API#: 30-015-24789	Prepared by: Ronnie Slack	Date: 12/13/04	Rev:

CURRENT

17-1/2" hole
13-3/8", H40, 48#, @ 600'
 Cmt'd w/500 sx to surface

TOC @ 680' per Temp survey

12-1/4" hole
8-5/8", 24#, @ 2573'
 Cmt'd w/1400 sx to surface.

Delaware
 2744' - 2768' (3/13/02) Wet
 acidized w/1000 gals

Delaware
 2926' - 2940' (3/13/02) Wet
 acidized w/500 gal

Delaware
 3000' - 3014' (3/26/03) Wet
 3032' - 3050' (3/26/03) Wet
 acidized w/2500 gal

BONE SPRING
 5395' - 5420'

7-7/8" Hole
5-1/2", 17#, @ 6250'
 Cmt'd w/975 sx. TOC @ 680' per Temp survey

3/29/03 Production Tubing
 96 Jts, 2-7/8", J55 tubing
 Seating Nipple

CIBP @ 5300', w/35' cement on top (3/13/02)

PBD @ 6191'

TD @ 6250'

