

District I
1625 N. French Dr., Hobbs, NM 88240
District II
1301 W. Grand Avenue, Artesia, NM 88210
District III
1000 Rio Brazos Road, Aztec, NM 87410
District IV
1220 S. St. Francis Dr., Santa Fe, NM 87505

State of New Mexico
Energy Minerals and Natural Resources

Form C-101
May 27, 2004

Oil Conservation Division
1220 South St. Francis Dr.
Santa Fe, NM 87505

RECEIVED

DEC 14 2004

Submit to appropriate District Office

☐ AMENDED REPORT

APPLICATION FOR PERMIT TO DRILL, RE-ENTER, DEEPEN, PLUGBACK, OR ADD A ZONE

¹ Operator Name and Address Mewbourne Oil Company Po Box 5270 Hobbs, NM 88240		² OGRID Number 14744
³ Property Code	³ Property Name Empire 18 State	⁴ API Number 30 - 015 - 33769
⁹ Proposed Pool 1 Undes East Empire Yeso		¹⁰ Proposed Pool 2

⁷ Surface Location

UL or lot no.	Section	Township	Range	Lot Idn	Feet from the	North/South line	Feet from the	East/West line	County
I	18	17S	29E		2310	S	990	E	Eddy

No⁸ Proposed Bottom Hole Location If Different From Surface

UL or lot no.	Section	Township	Range	Lot Idn	Feet from the	North/South line	Feet from the	East/West line	County

Additional Well Information

¹¹ Work Type Code N	¹² Well Type Code O	¹³ Cable/Rotary R	¹⁴ Lease Type Code S	¹⁵ Ground Level Elevation 3634'
¹⁶ Multiple No	¹⁷ Proposed Depth 4500	¹⁸ Formation East Empire Yeso	¹⁹ Contractor TBA	²⁰ Spud Date ASAP
Depth to Groundwater 50' or more but less than 100 No		Distance from nearest fresh water well Less than 1000 from all other wtr sources No		Distance from nearest surface water 1000' or more Yes
Pit: Liner: Synthetic <input checked="" type="checkbox"/> 12 mils thick Clay <input type="checkbox"/> Pit Volume: 24000 bbls Drilling Method: Production				
Closed-Loop System <input type="checkbox"/> Fresh Water <input checked="" type="checkbox"/> Brine <input checked="" type="checkbox"/> Diesel/Oil-based <input type="checkbox"/> Gas/Air <input type="checkbox"/>				

²¹ Proposed Casing and Cement Program

Hole Size	Casing Size	Casing weight/foot	Setting Depth	Sacks of Cement	Estimated TOC
12 1/4"	8 3/4"	32#	400'	200	Surface
7 7/8"	5 1/2"	17#	4500'	700	Cover all oil, water & gas bearing zones

²² Describe the proposed program. If this application is to DEEPEN or PLUG BACK, give the data on the present productive zone and proposed new productive zone. Describe the blowout prevention program, if any. Use additional sheets if necessary.

BOP Program: 3k Schaffer LWS or equivalent (Double-Ram Hydraulic) with 3k Hydril (See Exhibit #2A) from surface casing to total depth.

Mud Program:

0' to 400' Fresh Water, spud mud, lime for PH and LCM as needed for seepage.
400' to TD Brine Water, lime for PH and LCM as needed for seepage.

²³ I hereby certify that the information given above is true and complete to the best of my knowledge and belief. I further certify that the drilling pit will be constructed according to NMOC guidelines ☒, a general permit ☐, or an (attached) alternative OCD-approved plan ☐.

OIL CONSERVATION DIVISION

Approved by:

Printed name: Kristi Green

Title:

Title: Hobbs Production

Approval Date:

E-mail Address: kgreen@mewbourne.com

Conditions of Approval Attached ☐

Date: 12/10/04

Phone: 505-393-5905

TIM W. GUM

DISTRICT II SUPERVISOR

DEC 16 2004

Expiration Date:

DEC 16 2005

DISTRICT I
1625 N. French Dr., Hobbs, NM 88240

DISTRICT II
811 South First, Artesia, NM 88210

DISTRICT III
1000 Rio Brazos Rd., Aztec, NM 87410

DISTRICT IV
2040 South Pacheco, Santa Fe, NM 87505

State of New Mexico
Energy, Minerals and Natural Resources Department

Form C-102
Revised March 17, 1999
Instruction on back
Submit to Appropriate District Office
State Lease - 4 Copies
Fee Lease - 3 Copies

OIL CONSERVATION DIVISION
P.O. Box 2088
Santa Fe, New Mexico 87504-2088

☐ AMENDED REPORT

WELL LOCATION AND ACREAGE DEDICATION PLAT

API Number	Pool Code	Pool Name
		Undes East Empire Yeso
Property Code	Property Name	Well Number
	EMPIRE "18" STATE	7
OGRID No.	Operator Name	Elevation
14744	MEWBOURNE OIL COMPANY	3668

Surface Location



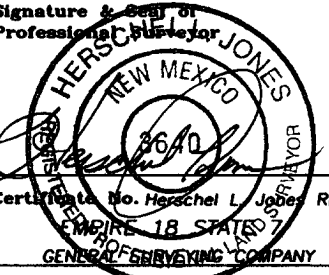
UL or lot No.	Section	Township	Range	Lot Idn	Feet from the	North/South line	Feet from the	East/West line	County
1	18	17S	29E		2310	SOUTH	990	EAST	EDDY

Bottom Hole Location If Different From Surface

UL or lot No.	Section	Township	Range	Lot Idn	Feet from the	North/South line	Feet from the	East/West line	County

Dedicated Acres	Joint or Infill	Consolidation Code	Order No.
40			

NO ALLOWABLE WILL BE ASSIGNED TO THIS COMPLETION UNTIL ALL INTERESTS HAVE BEEN CONSOLIDATED
OR A NON-STANDARD UNIT HAS BEEN APPROVED BY THE DIVISION

				OPERATOR CERTIFICATION I hereby certify the the information contained herein is true and complete to the best of my knowledge and belief.  Signature Kristi Green Printed Name Hobbs Regulatory Title 12/10/04 Date
				SURVEYOR CERTIFICATION I certify that the well location shown on this plat was plotted from field notes of actual surveys made by me or under my supervision, and that the same is true and correct to the best of my belief. 12/06/2004 Date Surveyed  Signature & Seal of Professional Surveyor  Certificate No. Herschel L. Jones RLS 3640 EMPIRE 18 STATE GENERAL SURVEYING COMPANY

Lease #B6846
N.32°50'01.2"
W.104°06'31.8"
N.667030.3
E.569110.3
(NAD-27)

990'
2310'

0 330' 660' 990' 1650' 1980' 2310' 2310' 1980' 1650' 990' 660' 330' 0'

MULTI-POINT SURFACE USE AND OPERATIONS PLAN
MEWBOURNE OIL COMPANY

Empire 18 St #7
2310' FSL & 990' FEL
Section 18-T17S-R29E
Eddy County, New Mexico

This plan is submitted with Form C101, Application for Permit to Drill, covering the above described well. The purpose of this plan is to describe the location of the proposed well, the proposed construction activities and operations plan, the magnitude of the surface disturbance involved, and the procedures to be followed in restoring the surface so that a complete appraisal can be made of the environmental impact associated with the proposed operations.

1. Existing Roads:

- A. Exhibit #3 is a topographic map showing the location of the proposed well and access road.
- B. **Directions to location from Loco Hills: Continue west on Hwy 82, approx 7.7 miles. Between mile marker 124 and 125 turn right thru yellow cattle guard, proceed for north 0.6 miles. Turn left (north/NW) at "Y" for 7/10 mile. Turn right at "Y". Proceed NE for 0.8 miles to Empire "18" St #1. Turn left (north) thru location & continue north 400' to location.**

2. Proposed Access Road:

- A 400' of new road will be needed.

3. Location of Existing and/or Proposed Facilities:

- A. There are no production facilities on this lease at the present time.
- B. In the event that the well is productive, production facilities will be located on the well pad.

4. Location and Type of Water Supply

The well will be drilled with a combination of fresh water and brine water based mud systems. The water will be obtained from commercial suppliers in the area and/or hauled to the location by transport trucks over existing and proposed roads as indicated in Exhibit #3.

5. Source of Construction Materials

All material required for construction of the drill pad and access roads will be obtained from private, state, or federal pits. The construction contractor will be solely responsible for securing construction materials required for this operation and paying any royalties that may be required on those materials.

MULTI-POINT SURFACE USE AND OPERATIONS PLAN

MEWBOURNE OIL COMPANY

Empire 18 St #7

Page 2

6. Methods of Handling Waste Disposal:

- A. Drill cuttings not retained for evaluation purposed will be disposed of in the reserve pit.
- B. Drilling fluids will be allowed to evaporate in the reserve pit prior to closure.
- C. Water produced during operations will be disposed of in the reserve pit.
- D. If any liquid hydrocarbons are produced during operations, those liquids will be stored in suitable tanks until sold.
- E. Current regulations regarding the proper disposal of human waste will be followed.
- F. All trash, junk, and other waste materials will be stored in proper containers to prevent dispersal and will be removed to an appropriate facility within one week of cessation of drilling and completion activities.

7. Ancillary Facilities

There are no ancillary facilities within the immediate vicinity of the proposed well site.

8. Well Site Layout

- A. A diagram of the drill pad is shown in Exhibit #5. Dimensions of the pad, pits, and location of major rig components are shown.
- B. The reserve pit will be lined with a high quality plastic sheeting to prevent migration of fluids as per OCD regulations.
- C. The pad dimension of 400' X 250' have been staked and flagged.

9. Plans for Restoration of Surface

- A. Upon cessation of the proposed operations, if the well is abandoned, the location and road will be ripped and re-seeded. The reserve pit area, after allowing to dry will be leveled. The entire location will be restored to the original contour as much as reasonable possible. All trash, garbage, and pit lining will be hauled to appropriate disposal to assure the location is aesthetically pleasing as reasonable possible. All restoration work will be completed within 180 days of cessation of activities.
- B. The disturbed area will be restored by re-seeding during the proper growing season.
- C. Three sides of the reserve pit will be fenced prior to and during drilling operations. The reserve pit will be fenced on the fourth side after the drilling rig is removed to prevent the endangerment of livestock. The fence will remain in place until the pit area has been leveled and restored.

MULTI-POINT SURFACE USE AND OPERATIONS PLAN

MEWBOURNE OIL COMPANY

Empire 18 St #7

Page 3

- D. Upon cessation of the proposed operations, if the well is not abandoned, the reserve pit area will be restored as per OCD guidelines. Any additional caliche required for production facilities will be obtained from a source as described in Section 6.
- E. Within 90 days of cessation of drilling and completion operations, all equipment not necessary for production operations will be removed. The location will be cleaned of all trash and junk to assure the well site is left as aesthetically pleasing as reasonably possible

10. Surface Ownership:

The surface is owned by: State of New Mexico

11. Other Information

- A. Topography: Refer to the archaeological report for a detailed description of flora, fauna, soil characteristics, dwellings, and historical or cultural sites.
- B. The primary use of the surface at the location is for grazing of livestock.

12. Operator's Representative:

- A. Through APD approval and drilling operations:

N.M. Young, District Manager
Mewbourne Oil Company
PO Box 5270
Hobbs, NM 88241
505-393-5905

- B. Through completion and production operations:

N.M. Young, District Manager
Mewbourne Oil Company
PO Box 5270
Hobbs, NM 88241
505-393-5905

MULTI-POINT SURFACE USE AND OPERATIONS PLAN

MEWBOURNE OIL COMPANY

Empire 18 St #7

Page 4

13. Certification

I hereby certify that I, or persons under my direct supervision, have inspected the proposed drill site and access route; that I am familiar with the conditions which currently exist; that the statements made in this plan are to the best of my knowledge, true and correct; and the work associated with the operations proposed herein will be performed by Mewbourne Oil Company, its contractors and subcontractors, in accordance with this plan and the terms and conditions under which it is approved. This statement is subject to the provisions of 18 U.S.C. 1001 for the filing of a false statement.

Date: 12/10/04

Signature: 

NM Young
Mewbourne Oil Company
PO Box 5270
Hobbs, NM 88241
(505) 393-5905

Hydrogen Sulfide Drilling Operations Plan

Mewbourne Oil Company

Empire 18 St #7

2310' FSL & 990' FEL

Section 18-T17S-R29E

Eddy County, New Mexico

1. Hydrogen Sulfide Training

All personnel, whether regularly assigned, contracted, or employed on an unscheduled basis, will have received training from a qualified instructor in the following areas prior to entering the drilling pad area of the well:

- 1 The hazards and characteristics of hydrogen sulfide gas.
- 2 The proper use of personal protective equipment and life support systems.
- 3 The proper use of hydrogen sulfide detectors, alarms, warning systems, briefing areas, evacuation procedures.
- 4 The proper techniques for first aid and rescue operations.

Additionally, supervisory personnel will be trained in the following areas:

- 1 The effects of hydrogen sulfide on metal components. If high tensile tubular systems are utilized, supervisory personnel will be trained in their special maintenance requirements.
- 2 Corrective action and shut in procedures, blowout prevention, and well control procedures while drilling a well.
- 3 The contents of the Hydrogen Sulfide Drilling Operations Plan.

There will be an initial training session prior to encountering a known hydrogen sulfide source. The initial training session shall include a review of the site specific Hydrogen Sulfide Drilling Operations Plan.

2. Hydrogen Sulfide Safety Equipment and Systems

All hydrogen sulfide safety equipment and systems will be installed, tested, and operational prior to drilling below the intermediate casing.

1. Well Control Equipment

- A. Flare line with automatic igniter or continuous ignition source.
- B. Choke manifold with minimum of one adjustable choke.
- C. Blowout preventers equipped with blind rams and pipe rams to accommodate all pipe sizes with properly sized closing unit
- D. Auxiliary equipment including rotating head and annular type blowout preventer.

2. Protective Equipment for Essential Personnel
Thirty minute self contained work unit located at briefing area as indicated on wellsite diagram.
3. Hydrogen Sulfide Protection and Monitoring Equipment
Two portable hydrogen sulfide monitors positioned on location for optimum coverage and detection. The units shall have audible sirens to notify personnel when hydrogen sulfide levels exceed 20 ppm.
4. Visual Warning Systems
 - A. Wind direction indicators as indicated on the wellsite diagram.
 - B. Caution signs shall be posted on roads providing access to location. Signs shall be painted a high visibility color with lettering of sufficient size to be readable at reasonable distances from potentially contaminated areas.

3. Mud Program

The mud program has been designed to minimize the amount of hydrogen sulfide entrained in the mud system. Proper mud weight, safe drilling practices, and the use of hydrogen sulfide scavengers will minimize hazards while drilling the well.

4. Metallurgy

All tubular systems, wellheads, blowout preventers, drilling spools, kill lines, choke manifolds, and valves shall be suitable for service in a hydrogen sulfide environment when chemically treated.

5. Communications

State & County Officials phone numbers are posted on rig floor and supervisors trailer. Communications in company vehicles and toolpushers are either two way radios or cellular phones.

6. Well Testing

Drill stem testing is not an anticipated requirement for evaluation of this well. A drill stem test is required, it will be conducted with a minimum number of personnel in the immediate vicinity. The test will be conducted during daylight hours only.

7. General Requirements

MOC has researched this area and no high concentrations of H₂S was found. MOC will have on location and working all H₂S safety equipment before Yates formation.

Notes Regarding Blowout Preventer

Mewbourne Oil Company

Empire 18 St #7

2310' FSL & 990' FEL

Section 18-T17S-R29E

Eddy County, New Mexico

1. Drilling nipple (bell nipple) to be constructed so that it can be removed without the use of a welder through the opening of the rotary table, with minimum internal diameter equal to blowout preventer bore.
2. Blowout preventer and all fittings must be in good condition with a minimum 3000 psi working pressure.
3. Safety valve must be available on the rig floor at all times with proper connections to install in the drill string. Valve must be full bore with minimum 3000 psi working pressure.
4. Equipment through which bit must pass shall be at least as large as internal diameter of the casing.
5. A kelly cock shall be installed on the kelly at all times.
6. Blowout preventer closing equipment to include and accumulator of at least 40 gallon capacity, two independent sources of pressure on closing unit, and meet all other API specifications.

Mewbourne Oil Company
BOP Scematic for
8 3/4" or 7 7/8" Hole

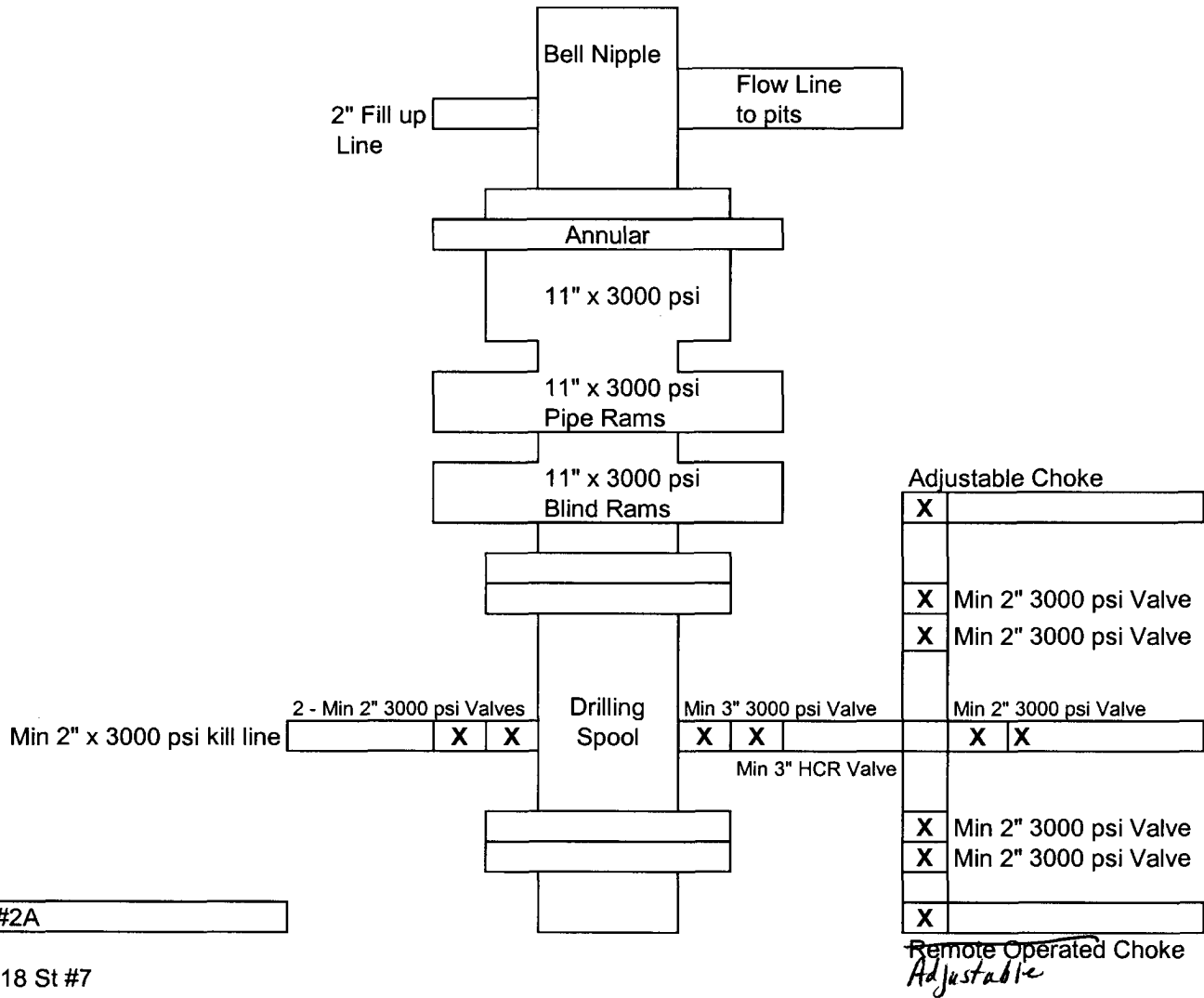


Exhibit #2A

Empire 18 St #7
Sec 18-T17S-R29E
2310' FSL & 990' FEL
Eddy County, NM

SECTION 18, TOWNSHIP 17 SOUTH, RANGE 29 EAST, NMPM, EDDY COUNTY, NEW MEXICO.

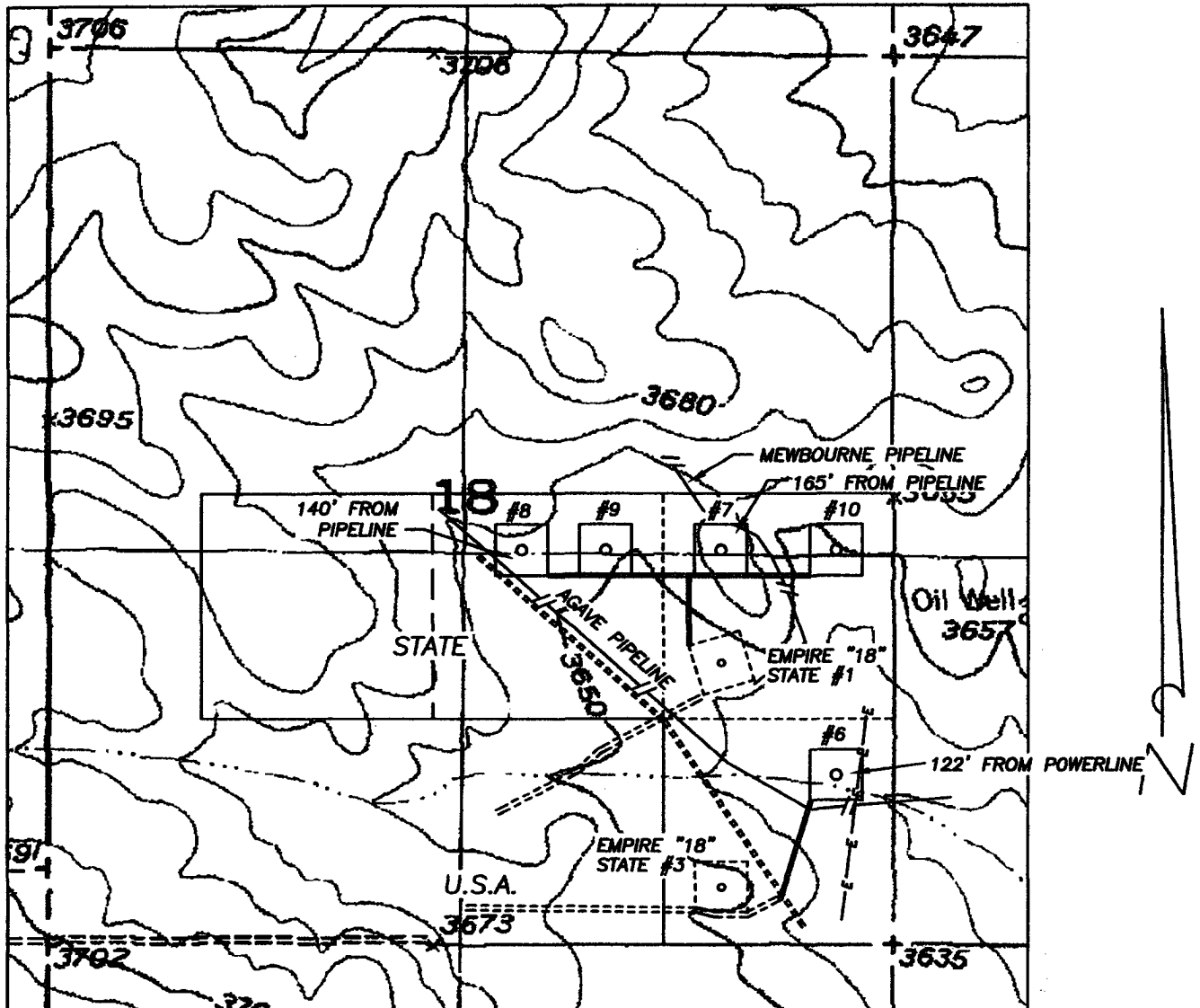
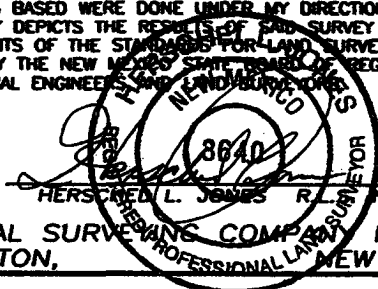


Exhibit 3

1000' 0 1000' 2000'
Scale 1" = 1000'

THE PREPARATION OF THIS PLAT AND THE PERFORMANCE OF THE SURVEY UPON WHICH IT IS BASED WERE DONE UNDER MY DIRECTION AND THE PLAT ACCURATELY DEPICTS THE RESULTS OF SAID SURVEY AND MEET THE REQUIREMENTS OF THE STANDARDS FOR LAND SURVEYS IN NEW MEXICO AS ADOPTED BY THE NEW MEXICO STATE BOARD OF REGISTRATION FOR PROFESSIONAL ENGINEERS AND SURVEYORS.



GENERAL SURVEYING COMPANY, P.O. BOX 1928
LOVINGTON, NEW MEXICO 88260

MEWBOURNE OIL COMPANY

LEASE ROAD TO ACCESS THE MEWBOURNE EMPIRE "18" STATE #6, 7, 8, 9, & 10 WELLS, LOCATED IN SECTION 18, TOWNSHIP 17 SOUTH, RANGE 29 EAST, NMPM, EDDY COUNTY, NEW MEXICO.

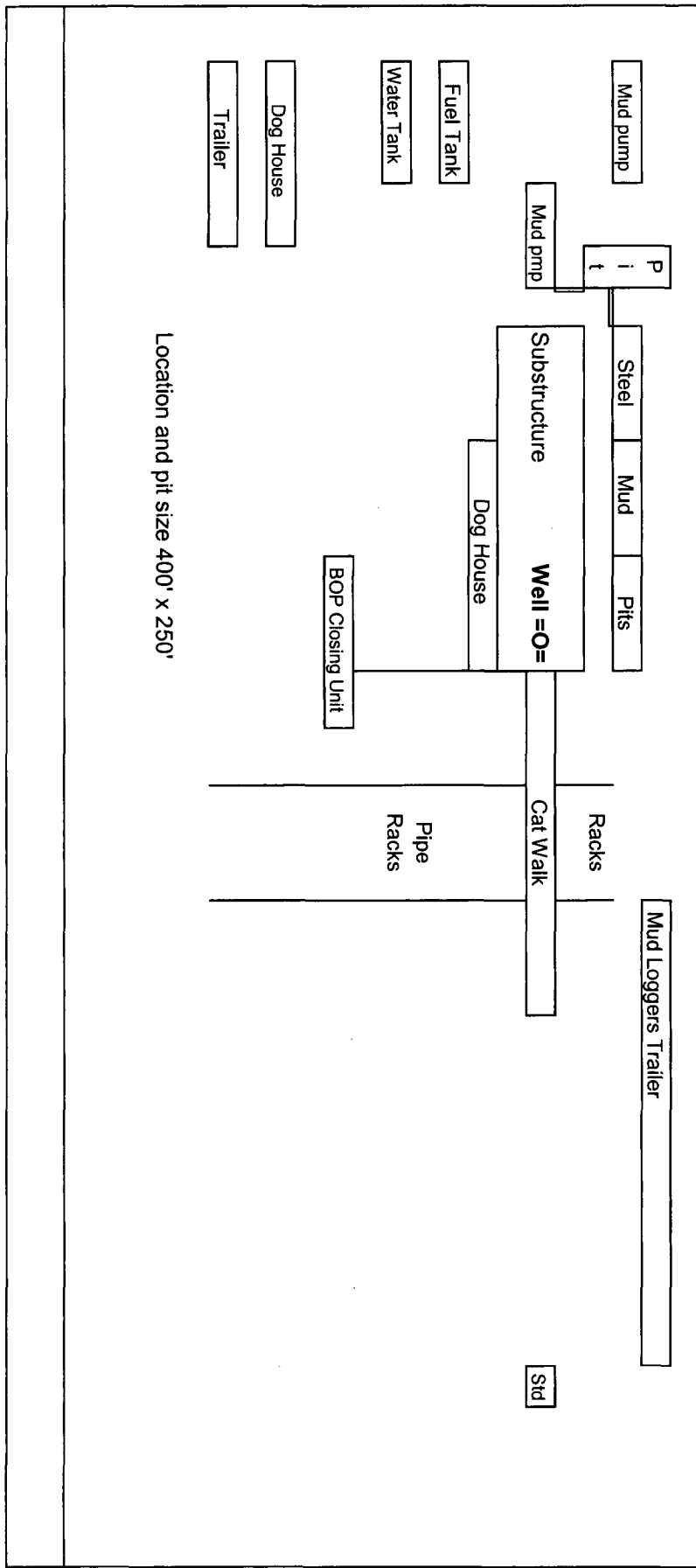
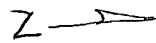
Survey Date: 12/06/2004	Sheet 1 of 1 Sheets
Drawn By: Ed Blevins	W.O. Number
Date: 12/06/04	Scale 1" = 1000' EMPIRE

Mewbourne Oil Company

Exhibit # 5

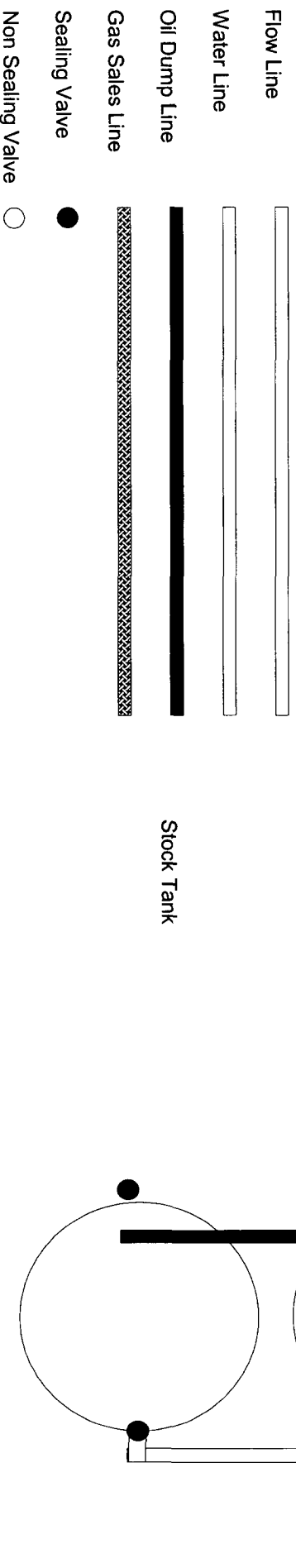
Well Name Empire 18 St #7
Footages Sec 18-T17S-R29E
STR 2310' FSL & 990' FEL
County Eddy County
State New Mexico

Reserve Pit
150 x 150'



Rig Location Schematic

Proposed Production Facilities Schematic



Mewbourne Oil Company
Exhibit # 6
Proposed Production Facilities Schematic
Empire 18 St #7
Sec 18-T17S-R29E
2310' FSL & 990' FEL
Eddy County, NM