

DISTRICT I
1625 N. French Dr., Hobbs, NM 88240
DISTRICT II
811 South First, Artesia, NM 88210
DISTRICT III
1000 Rio Brazos Rd., Aztec, NM 87410
DISTRICT IV
2040 South Pacheco, Santa Fe, NM 87505

State of New Mexico
Energy, Minerals and Natural Resources Department

Form C-11
Revised March 17, 1991

Submit to Appropriate District Office
State Lease - 4 Copies
Fee Lease - 3 Copies

OIL CONSERVATION DIVISION

2040 South Pacheco
Santa Fe, New Mexico 87504-2088

☐ AMENDED REPORT

WELL LOCATION AND ACREAGE DEDICATION PLAT

API Number	Pool Code	Pool Name
	82600	Parkway Morrow West (Gas)
Property Code	Property Name	Well Number
23438	PARKWAY WEST UNIT	22
OGRID No.	Operator Name	Elevation
169355	DEVON LOUISIANA CORPORATION	3294'

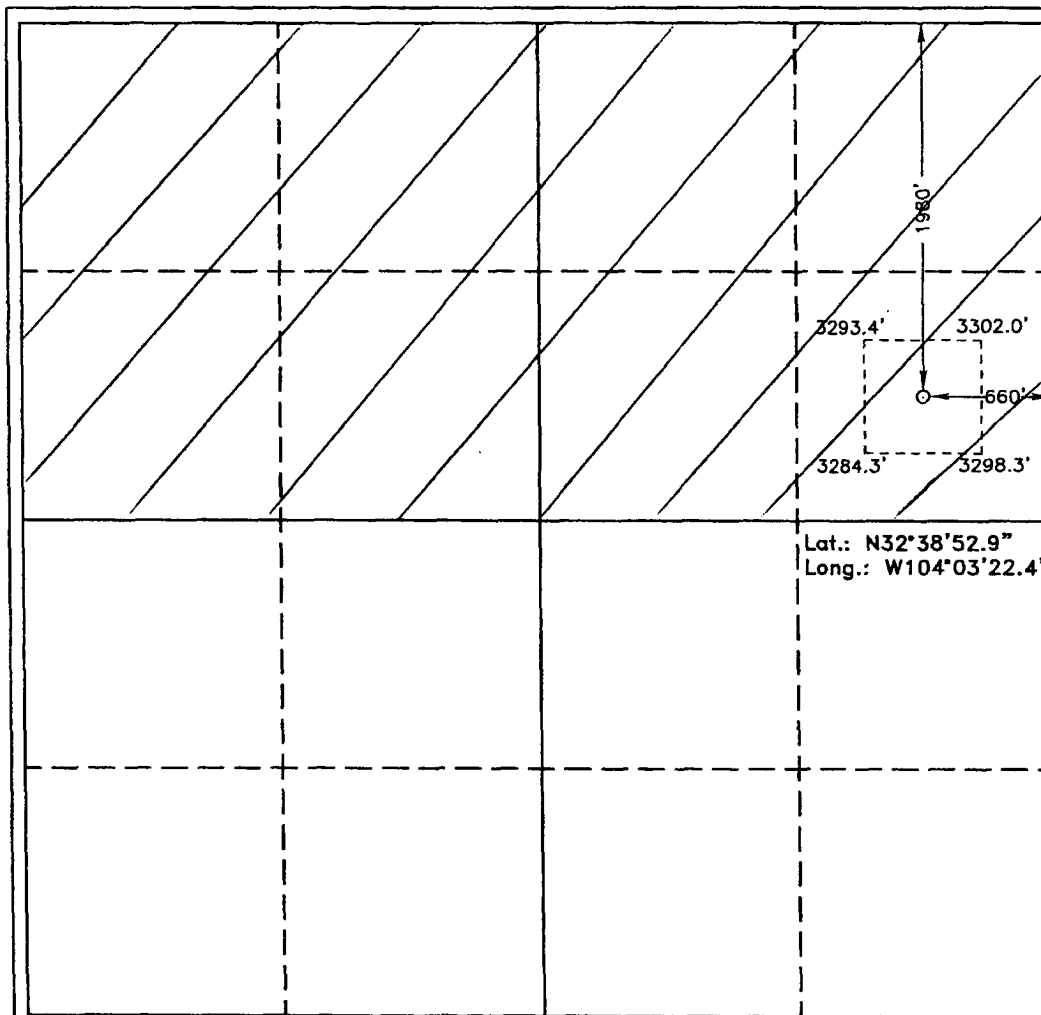
Surface Location

UL or lot No.	Section	Township	Range	Lot Idn	Feet from the	North/South line	Feet from the	East/West line	County
H	22	19 S	29 E		1980	NORTH	660	EAST	EDDY

Bottom Hole Location If Different From Surface

UL or lot No.	Section	Township	Range	Lot Idn	Feet from the	North/South line	Feet from the	East/West line	County
Dedicated Acres	Joint or Infill	Consolidation Code	Order No.						
320									

NO ALLOWABLE WILL BE ASSIGNED TO THIS COMPLETION UNTIL ALL INTERESTS HAVE BEEN CONSOLIDATED
OR A NON-STANDARD UNIT HAS BEEN APPROVED BY THE DIVISION



OPERATOR CERTIFICATION

I hereby certify the the information
contained herein is true and complete to the
best of my knowledge and belief.

Linda Guthrie
Signature

Linda Guthrie

Printed Name

Regulatory Specialist

Title

05/14/2004

Date

SURVEYOR CERTIFICATION

I hereby certify that the well location shown
on this plat was plotted from field notes of
actual surveys made by me or under my
supervision, and that the same is true and
correct to the best of my belief.

APRIL 19, 2004

Date Surveyed

Signature & Seal of
Professional Surveyor

Gary L. Jones
NEW MEXICO
W.O. No. 4225
Certificate No. Gary L. Jones 7977
BASIC SURVEY

**INTREPID MINING NM, LLC
CARLSBAD, NEW MEXICO**

December 20, 2004

Devon Energy Corporation
20 North Broadway
Oklahoma, OK 73102-8260

Attention: Meg Muhlinghouse – Land Advisor

Re: PARKWAY WEST UNIT Well No. 22
1,680' FNL and 1,070' FEL
Section 22, T-19-S, R-29-E
Eddy County, New Mexico

Dear Mr. Francis:

Intrepid Mining - NM, LLC, offers no objection to the drilling location of the Parkway West Unit, Well 22, by the Devon Energy Corporation.

Sincerely,

Thomas A. McGuire
Senior Mine Engineer

cc:

Oil Conservation Division
Attention: Mr. Tim Gum (District Supervisor)
1301 W. Grand Avenue
Artesia, NM 88210

P.O. BOX 101 • 35 MILES EAST HIGHWAY 62-180 • CARLSBAD, NEW MEXICO • 88220

PHONE: (505) 234-3814 • FAX: (505) 887-0929

TOTAL P.02