

EC

DEPA  
BURE

If earthen pits are used in  
association with the drilling of this  
well, an OCD pit permit must be  
obtained prior to pit construction.

TESIA

FORM APPROVED  
OMB No. 1004-0136  
Expires November 30, 2000

## 0597 APPLICATION FOR PERMIT TO DRILL OR REENTER

1a. Type of Work: <input checked="" type="checkbox"/> DRILL <input type="checkbox"/> REENTER		<b>CONFIDENTIAL</b>	
1b. Type of Well: <input checked="" type="checkbox"/> Oil Well <input type="checkbox"/> Gas Well <input type="checkbox"/> Other <input checked="" type="checkbox"/> Single Zone <input type="checkbox"/> Multiple Zone			
2. Name of Operator BASS ENTERPRISES PRODUCTION CO		Contact: CINDI GOODMAN E-Mail: cdgoodman@basspet.com	
3a. Address P O BOX 2760 MIDLAND, TX 79702		3b. Phone No. (include area code) Ph: 432.683.2277 Fx: 432.687.0329	
4. Location of Well (Report location clearly and in accordance with any State requirements. *) At surface NWNE 510FNL 1980FEL 32.12322 N Lat, 103.55070 W Lon At proposed prod. zone NWNE 510FNL 1980FEL 32.12322 N Lat, 103.55070 W Lon		7. If Unit or CA Agreement, Name and No. NMNM71016X 8. Lease Name and Well No. POKER LAKE UNIT 214 9. API Well No. 30-015-33860	
14. Distance in miles and direction from nearest town or post office* 14 MILES EAST OF MALAGA NM		10. Field and Pool, or Exploratory NASH DRAW-DELAWARE 11. Sec., T., R., M., or Blk. and Survey or Area Sec 19 T24S R30E Mer NMP SME: BLM	
15. Distance from proposed location to nearest property or lease line, ft. (Also to nearest drig. unit line, if any) 3300'		12. County or Parish EDDY 13. State NM	
16. No. of Acres in Lease 2520.68		17. Spacing Unit dedicated to this well 40.00	
18. Distance from proposed location to nearest well, drilling, completed, applied for, on this lease, ft. 2700'		19. Proposed Depth 7700 MD 7700 TVD	
20. BLM/BIA Bond No. on file		21. Elevations (Show whether DF, KB, RT, GL, etc.) 3166 GL	
22. Approximate date work will start 06/01/2004		23. Estimated duration 12 DAYS	
24. Attachments CARLSBAD CONTROLLED WATER BASIN			

The following, completed in accordance with the requirements of Onshore Oil and Gas Order No. 1, shall be attached to this form:

- |   |  |
|---|--|
| 1. Well plat certified by a registered surveyor.  | 4. Bond to cover the operations unless covered by an existing bond on file (see Item 20 above).    |
| 2. A Drilling Plan.   | 5. Operator certification  |
| 3. A Surface Use Plan (if the location is on National Forest System Lands, the SUPO shall be filed with the appropriate Forest Service Office). | 6. Such other site specific information and/or plans as may be required by the authorized officer. |

25. Signature (Electronic Submission)	Name (Printed/Typed) CINDI GOODMAN	Date 05/17/2004
Title AUTHORIZED REPRESENTATIVE		
Approved by (Signature) /s/ Leslie A. Theiss	Name (Printed/Typed) /s/ Leslie A. Theiss	Date 18 JUN 2004
Title FIELD MANAGER		
Office CARLSBAD FIELD OFFICE		

Application approval does not warrant or certify the applicant holds legal or equitable title to those rights in the subject lease which would entitle the applicant to conduct operations thereon.  
Conditions of approval, if any, are attached.

APPROVAL FOR 1 YEAR

Title 18 U.S.C. Section 1001 and Title 43 U.S.C. Section 1212, make it a crime for any person knowingly and willfully to make to any department or agency of the United States any false, fictitious or fraudulent statements or representations as to any matter within its jurisdiction.

Additional Operator Remarks (see next page)

Electronic Submission #30440 verified by the BLM Well Information System  
For BASS ENTERPRISES PRODUCTION CO, sent to the Carlsbad  
Committed to AFMSS for processing by LINDA ASKWIG on 05/17/2004 (04LA0423AE)

APPROVAL SUBJECT TO  
GENERAL REQUIREMENTS  
AND SPECIAL STIPULATIONS  
ATTACHED

Witness Surface Casing

\*\* BLM REVISED \*\* BLM REVISED \*\* BLM REVISED \*\* BLM REVISED \*\* BLM REVISED \*\*

**Additional Operator Remarks:**

Surface casing to be set into Rustler below all fresh water sands.

Production casing will be cemented using Zone Seal Cement.

Drilling Procedure, BOP Diagram, Anticipated tops & surface plans attached.

This well is located outside the Secretary's Potash area and outside the R-111 Potash area.

There are no potash leases within 1 mile of this location.

DISTRICT I  
1025 N. French Dr., Hobbs, NM 88240

## State of New Mexico

Energy, Minerals and Natural Resources Department

Form C-102  
Revised March 17, 1999

DISTRICT II  
811 South First, Artesia, NM 88210

Submit to Appropriate District Office  
State Lease - 4 Copies  
Fee Lease - 3 Copies

DISTRICT III  
1000 Rio Brazos Rd., Aztec, NM 87410

## OIL CONSERVATION DIVISION

2040 South Pacheco

Santa Fe, New Mexico 87504-2088

DISTRICT IV  
2040 South Pacheco, Santa Fe, NM 87505

☐ AMENDED REPORT

## WELL LOCATION AND ACREAGE DEDICATION PLAT

API Number	Pool Code 47545	Pool Name NASH DRAW (DELAWARE)
Property Code 001796	Property Name POKER LAKE UNIT	Well Number 214
UGRD No. 001801	Operator Name BASS ENTERPRISES PRODUCTION COMPANY	Elevation 3166'

## Surface Location

UL or lot No.	Section	Township	Range	Lot Idn	Feet from the	North/South line	Feet from the	East/West line	County
B	19	24 S	30 E		510	NORTH	1980	EAST	EDDY

## Bottom Hole Location if Different From Surface

UL or lot No.	Section	Township	Range	Lot Idn	Feet from the	North/South line	Feet from the	East/West line	County

Dedicated Acres	Joint or Infill	Consolidation Code	Order No.
40	N		

NO ALLOWABLE WILL BE ASSIGNED TO THIS COMPLETION UNTIL ALL INTERESTS HAVE BEEN CONSOLIDATED  
OR A NON-STANDARD UNIT HAS BEEN APPROVED BY THE DIVISION

<p>LOT 1 - 40.77 AC.</p> <p>LOT 2 - 40.87 AC.</p> <p>LOT 3 - 40.94 AC.</p> <p>LOT 4 - 41.06 AC.</p>	40.66 AC.	40.65 AC.	40.65 AC.	<p>3173.4' 3168.7'</p> <p>3173.4' 3175.9'</p> <p>510'</p> <p>1980'</p> <p>LAT - N32°12'32.2"</p> <p>LONG - W103°55'07.0"</p>	<p><b>OPERATOR CERTIFICATION</b></p> <p>I hereby certify that the information contained herein is true and complete to the best of my knowledge and belief.</p> <p><i>William R. Dannels</i></p> <p>Signature</p> <p>W.R. DANNELS</p> <p>Printed Name</p> <p>DIVISION DRILLING SUPT.</p> <p>Title</p> <p>5/13/04</p> <p>Date</p>
	40.69 AC.	40.68 AC.	40.66 AC.		
	40.69 AC.	40.68 AC.	40.67 AC.		
	40.73 AC.	40.70 AC.	40.70 AC.		

## SURVEYOR CERTIFICATION

I hereby certify that the well location shown on this plat was plotted from field notes of actual surveys made by me or under my supervision and that the same is true and correct to the best of my belief.

APRIL 15, 2004

Date Surveyed  
Signature of Gary L. Jones  
Professional Surveyor

7977

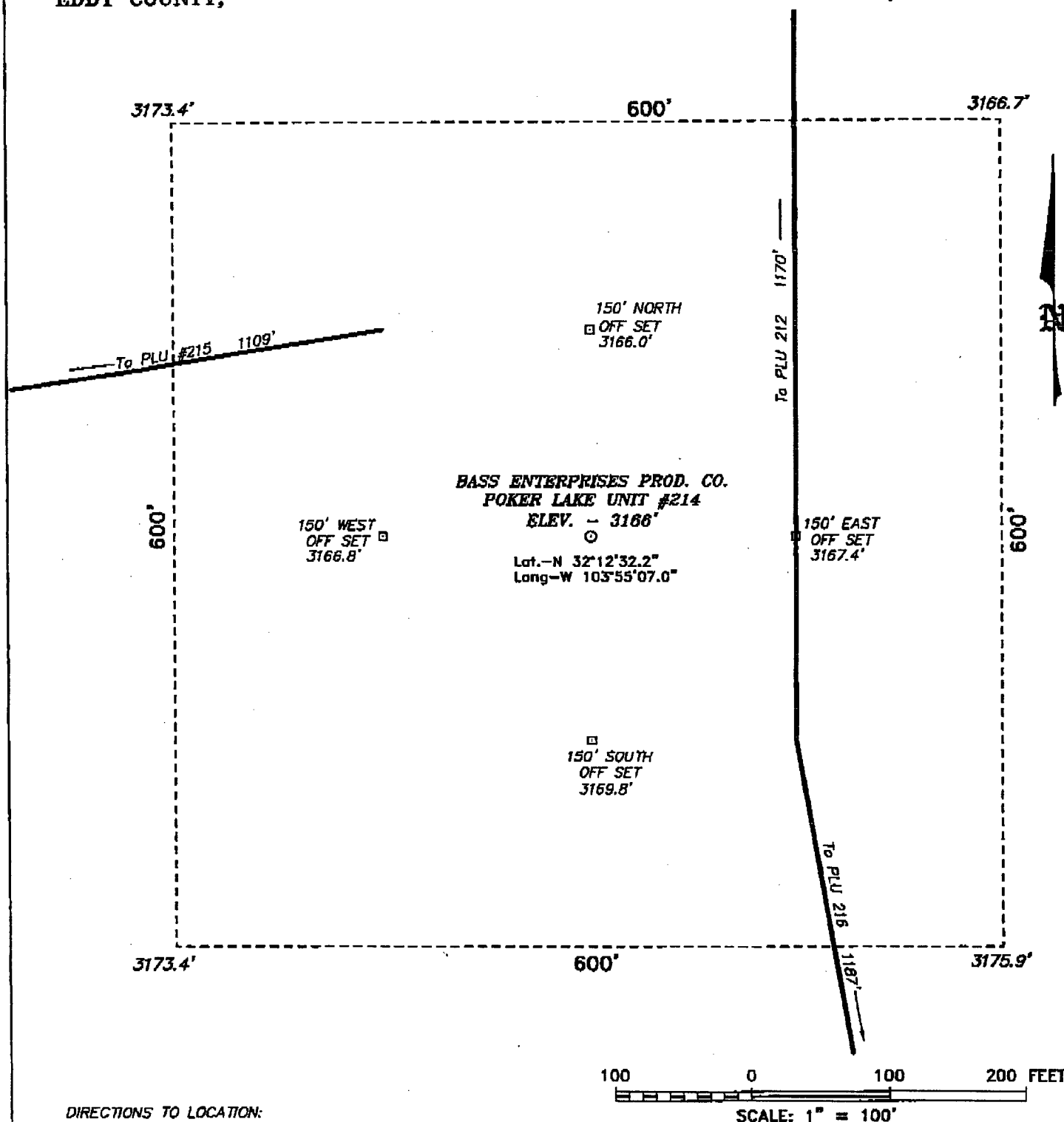
No. 4141

Certificate No. 8807351000

7977

BASIN SURVEYS

# SECTION 19, TOWNSHIP 24 SOUTH, RANGE 30 EAST, N.M.P.M., EDDY COUNTY, NEW MEXICO.



## DIRECTIONS TO LOCATION:

FROM THE JUNCTION OF CO. RD. 746A AND CO. RD. 748, GO EASTERLY ON CO. RD. 746A FOR APPROX. 1.0 MILE AND NORTHERLY FOR APPROX. 0.75 MILE TO PROPOSED LEASE ROAD TO THE PLU #213 AND THE PLU #214.

**BASIN SURVEYS** P.O. BOX 1786—HOBBS, NEW MEXICO

W.O. Number: 4141 Drawn By: K. GOAD

Date: 04-23-2004 Disk: KJG CD#7 - 4141A.DWG

## BASS ENTERPRISES PRODUCTION CO.

REF: POKER LAKE UNIT No. 214 / Well Pad Topo

THE POKER LAKE UNIT No. 214 LOCATED 510' FROM  
THE NORTH LINE AND 1980' FROM THE EAST LINE OF  
SECTION 19, TOWNSHIP 24 SOUTH, RANGE 30 EAST,

N.M.P.M., EDDY COUNTY, NEW MEXICO.

Survey Date: 04-15-2004 Sheet 1 of 1 Sheets

# **EIGHT POINT DRILLING PROGRAM BASS ENTERPRISES PRODUCTION CO.**

**NAME OF WELL:** Poker Lake Unit #214

**LEGAL DESCRIPTION - SURFACE:** 510' FNL & 1980' FEL, Section 19, T-24-S, R-30-E, Eddy County, New Mexico.

## **POINT 1: ESTIMATED FORMATION TOPS**

(See No. 2 Below)

## **POINT 2: WATER, OIL, GAS AND/OR MINERAL BEARING FORMATIONS**

Anticipated Formation Tops: KB 3184' (est) GL 3166'

<u>FORMATION</u>	<u>ESTIMATED TOP FROM KB</u>	<u>ESTIMATED SUBSEA TOP</u>	<u>BEARING</u>
T/Rustler	559'	+2625	Barren
T/Salt	834'	+2350'	Barren
T/Lamar Lime	3449'	-265'	Barren
T/Ramsey	3475'	-291'	Oil/Gas
T/Lwr Brushy Canyon "8" A	6964'	-3780'	Oil/Gas
T/Bone Spring	7239'	-4055'	Oil/Gas
T/Avalon	7309'	-4125'	Oil/Gas
TD	7700'	-4516'	

## **POINT 3: CASING PROGRAM**

<u>TYPE</u>	<u>INTERVALS</u>	<u>PURPOSE</u>	<u>CONDITION</u>
16"	0' - 40'	Conductor	Contractor Discretion
8-5/8", 28#, J-55, ST&C	0' - 800'	Surface	New <b>WITNESS</b>
5-1/2", 15.5#, J-55, LT&C	0' - 6500'	Production	New
5-1/2", 17#, J-55, LT&C	6500' - 7700'	Production	New

## **POINT 4: PRESSURE CONTROL EQUIPMENT (SEE ATTACHED DIAGRAM)**

A BOP equivalent to Diagram 1 will be nipped up on the surface casing head. The BOP stack choke, kill lines, kelly cocks, inside BOP, etc. will be hydro-tested to 70% of internal yield pressure of casing. In addition to the high pressure test, a low pressure (200 psi) test will be required. These tests will be performed:

- Upon installation
- After any component changes
- Fifteen days after a previous test
- As required by well conditions

A function test to insure that the preventers are operating correctly will be performed on each trip.

**POINT 5: MUD PROGRAM**

DEPTH	MUD TYPE	WEIGHT	FV	PV	YP	FL	Ph
0' - 800'	FW Spud Mud	8.5 - 9.2	70-38	NC	NC	NC	10.0
800' - 5600'	Brine Water	9.8 - 10.2	28-30	NC	NC	NC	9.5-10.5
5600' - TD'	Brine Water/Diesel	8.8 - 9.0	32-40	8	2	<25 cc	9.5 - 10.0

\*May increase vis for logging purposes only.

**POINT 6: TECHNICAL STAGES OF OPERATION****A) TESTING**

None anticipated.

**B) LOGGING**

GR-CNL-LDT-AIT from TD to base of Salt (+/- 3200').  
GR-CNL-CAL from base of Salt to surface.

**C) CONVENTIONAL CORING**

None anticipated.

**D) CEMENT**

INTERVAL	AMOUNT SXS	FT OF FILL	TYPE	GALS/SX	PPG	FT <sup>3</sup> /SX	COMPRESSIVE Nitrogen Strength	
<b>SURFACE:</b>								
Lead 0 - 500' (100% excess circ to surface)	250	500	Permian Basin Critical Zone + 1/2# Flocele	10.4	12.8	1.90		
Tail 500-800' (100% excess circ to surface)	200	300	Prem Plus + 2% CaCl <sub>2</sub> + 1/2# Flocele	6.33	14.8	1.35		
<b>PRODUCTION:</b>								
Base Slurry w/nitrogen 3036-7700' + (50% excess)	730	4664	Premium Plus + 2% Zone Sealant 2000	6.32	9.1-14.5	2.3-1.39	300/600 scf/bbl	1200

**E) DIRECTIONAL DRILLING**

No directional services anticipated.

**POINT 7: ANTICIPATED RESERVOIR CONDITIONS**

Normal pressures are anticipated throughout Delaware section. A BHP of 3310 psi (max) or MWE of 8.7 ppg is expected. Lost circulation may exist in the Delaware Section from 3536-7318'. No H<sub>2</sub>S is anticipated.

**POINT 8: OTHER PERTINENT INFORMATION****A) Auxiliary Equipment**

Upper and lower kelly cocks. Full opening stab in valve on the rig floor.

**B) Anticipated Starting Date**

Upon approval

12 days drilling operations

14 days completion operations

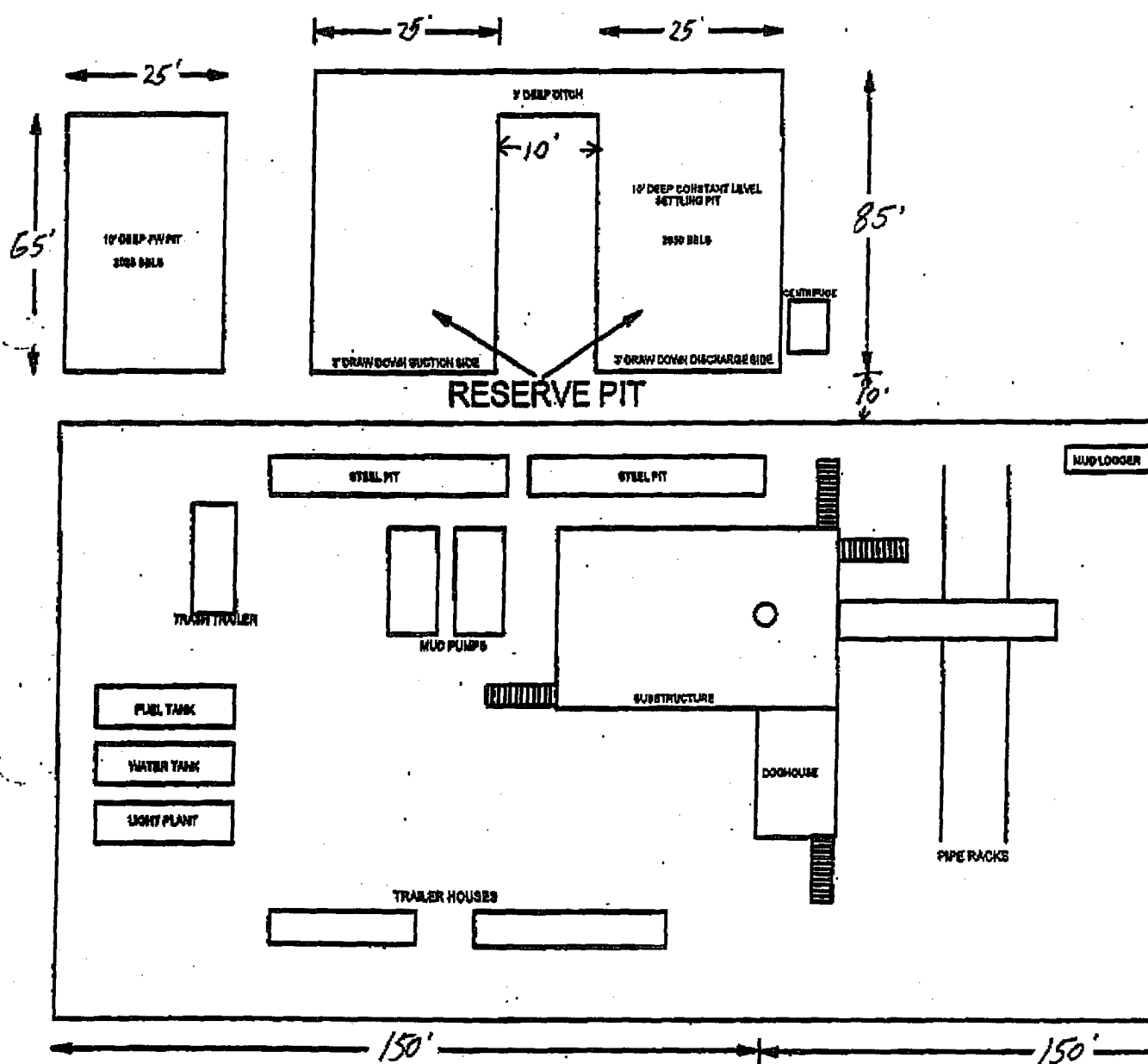
BGH/cdg

May 7, 2004

Poker Lake

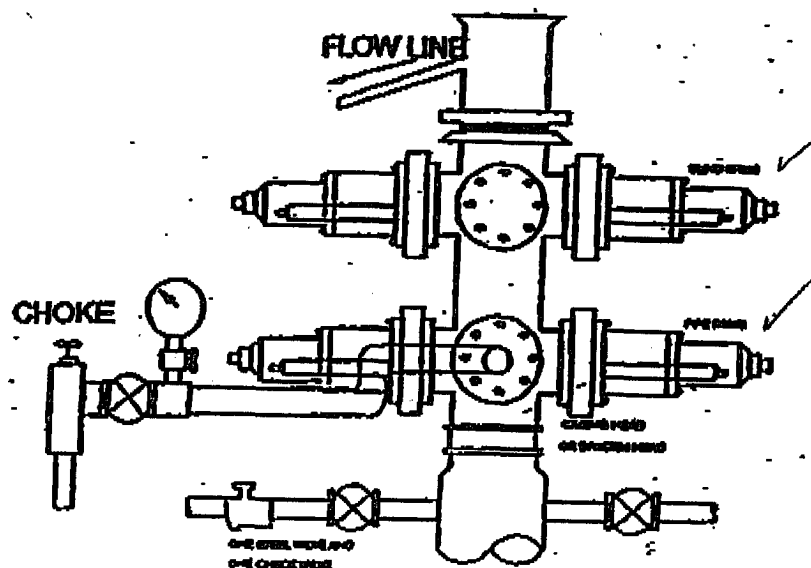
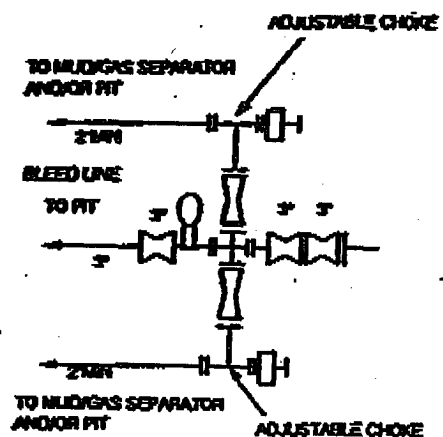
EXHIBIT

Acc  
R.





# 2000 PSI WP



## THE FOLLOWING CONSTITUTE MINIMUM BLOWOUT PREVENTER REQUIREMENTS

- A. One double gate blowout preventer with lower rams for pipe and upper rams blind, all hydraulically controlled.
- B. Opening on preventers between rams to be flanged, studded or clamped and at least two inches in diameter.
- C. All connections from operating manifold to preventers to be all steel hose or tube a minimum of one inch in diameter.
- D. The available closing pressure shall be at least 15% in excess of that required with sufficient volume to operate (close, open, and re-close) the preventers.
- E. All connections to and from preventers to have a pressure rating equivalent to that of the BOP's.
- F. Manual controls to be installed before drilling cement plug.
- G. Valve to control flow through drill pipe to be located on rig floor.
- H. All chokes will be adjustable. Choke spool may be used between rams.