

*File*

**marbob**  
energy corporation

May 12, 2003

Oil Conservation Division  
811 South First Street  
Artesia, New Mexico 88210

Attention: Mr. Tim Gum



**RE: Unorthodox Well Location**

Dear Mr. Gum:

Marbob Energy Corporation respectfully requests an administrative approval of the following unorthodox location pursuant to Order No. R-7900-B:

*30-015-32782*

**Burch Keely Unit #810**

1345 feet from the South line  
1315 feet from the West line  
Section 18, Township 17 South,  
Range 30 East  
Eddy County, New Mexico

*30-015-32783*

**Burch Keely Unit #926**

2615 feet from the South line  
1650 feet from the West line  
Section 18, Township 17 South,  
Range 30 East  
Eddy County, New Mexico

*30-015-28090*

**Burch Keely Unit #811**

1310 feet from the South line  
2545 feet from the West line  
Section 18, Township 17 South,  
Range 30 East  
Eddy County, New Mexico

*30-015-32786*

**Burch Keely Unit #930**

1320 feet from the South line  
25 feet from the West line  
Section 18, Township 17 South,  
Range 30 East  
Eddy County, New Mexico

These wells may be completed in the upper 500 feet of the Yeso, the Grayburg, the San Andres, and or the Seven Rivers Formation in the Grayburg Jackson Pool.

Attached to the applications are the following Exhibits:

- A. Oil Conservation Division Form C-102 with proration unit outlined (Exhibit A).

- B. A plat which shows all other wells within the quarter-quarter section and Burch Keely boundary (Exhibit B).

Well number 810 will be 3935 feet from the closest unit boundary and 25 feet from the interior quarter quarter line; well number 811 will be 2735 feet from the closest unit boundary and 10 feet from the interior quarter quarter line; well number 926 will be 2665 feet from the closest unit boundary and 25 feet from the interior quarter quarter line; well number 930 will be 3960 feet from the closest unit boundary and 25 feet from the interior quarter quarter line.

If these unorthodox locations meet with your approval, please sign below and return to our office. Thank you for your help.

Sincerely,

*Misti McLurg*

Misti McLurg  
Land Department



/mm  
Attachments

Approved this 15<sup>th</sup> day of May, 2003.

By: \_\_\_\_\_

Title: \_\_\_\_\_

Oil Conservation Division  
Artesia Office

## State of New Mexico

Energy, Minerals and Natural Resources Department

Form C-102

Revised February 10, 1994

Submit to Appropriate District Office

State Lease - 4 Copies

Fee Lease - 3 Copies

DISTRICT II  
P.O. Drawer DD, Artesia, NM 88211-0719

## OIL CONSERVATION DIVISION

P.O. Box 2088

Santa Fe, New Mexico 87504-2088

DISTRICT III  
1000 Rio Brazos Rd., Aztec, NM 87410DISTRICT IV  
P.O. BOX 2088, SANTA FE, N.M. 87504-2088

## WELL LOCATION AND ACREAGE DEDICATION PLAT

☐ AMENDED REPORT

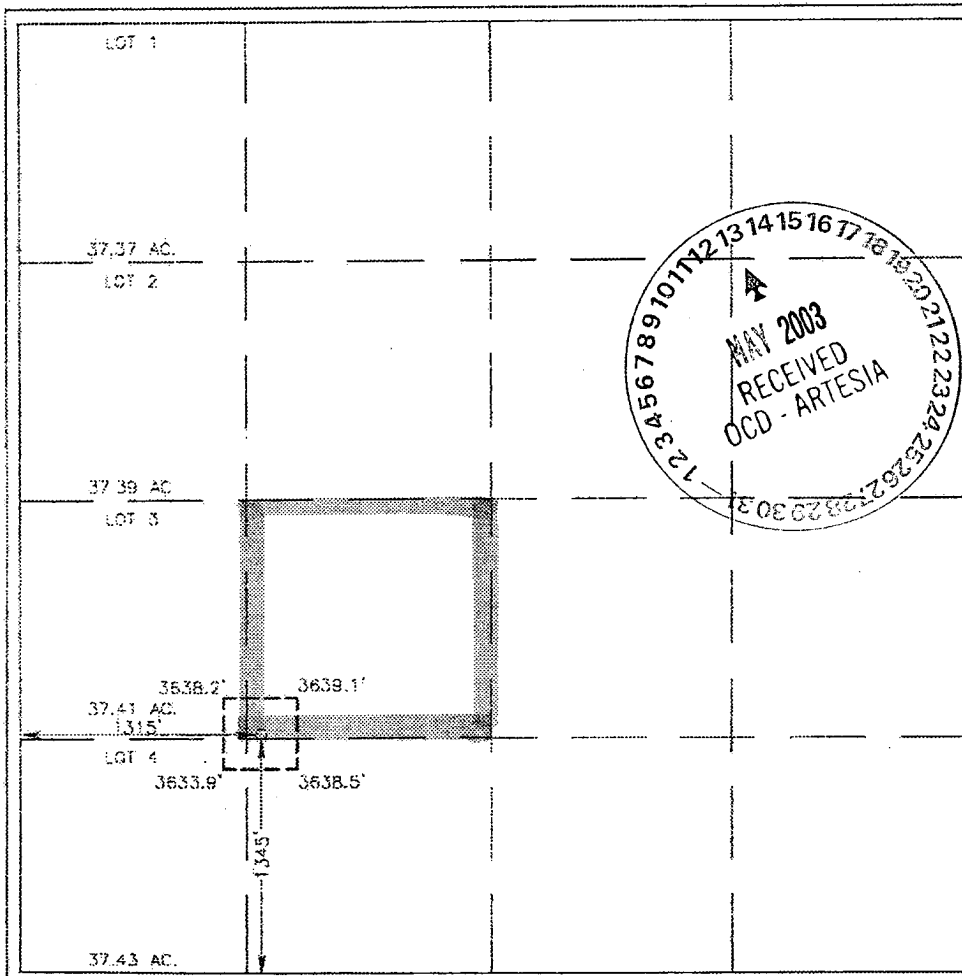
API Number 30-015-	Pool Code 28509	Pool Name GRBG JACKSON SR Q GRBG SA
Property Code 6497	Property Name BURCH KEELY UNIT	Well Number 810
OGRID No. 14049	Operator Name MARBOB ENERGY CORPORATION	Elevation 3636'

## Surface Location

UL or lot No. K	Section 18	Township 17-S	Range 30-E	Lot Idn	Feet from the 1345	North/South line SOUTH	Feet from the 1315	East/West line WEST	County EDDY
--------------------	---------------	------------------	---------------	---------	-----------------------	---------------------------	-----------------------	------------------------	----------------

## Bottom Hole Location If Different From Surface

UL or lot No.	Section	Township	Range	Lot Idn	Feet from the	North/South line	Feet from the	East/West line	County
Dedicated Acres 40	Joint or Infill	Consolidation Code	Order No.						

NO ALLOWABLE WILL BE ASSIGNED TO THIS COMPLETION UNTIL ALL INTERESTS HAVE BEEN CONSOLIDATED  
OR A NON-STANDARD UNIT HAS BEEN APPROVED BY THE DIVISION

## OPERATOR CERTIFICATION

I hereby certify the the information  
contained herein is true and complete to the  
best of my knowledge and belief.

Signature

DIANA J. CANNON

Printed Name

PRODUCTION ANALYST

Title

MARCH 21, 2003

Date

## SURVEYOR CERTIFICATION

I hereby certify that the well location shown  
on this plat was plotted from field notes of  
actual surveys made by me or under my  
supervision, and that the same is true and  
correct to the best of my belief.

FEBRUARY 21, 2003

Date Surveyed  
Signature & Seal of  
Professional Surveyor  
03-14-0217Certificate No. RONALD J. EDSON 3029  
GARY EDSON 12841

