

DISTRICT I

1626 N. FRENCH DR., HOBBBS, NM 86240

DISTRICT II

1301 W. GRAND AVENUE, ARTESIA, NM 86210

DISTRICT III

1000 Rio Brazos Rd., Aztec, NM 87410

DISTRICT IV

1220 S. ST. FRANCIS DR., SANTA FE, NM 87505

State of New Mexico

Energy, Minerals and Natural Resources Department

OIL CONSERVATION DIVISION
1220 SOUTH ST. FRANCIS DR.
Santa Fe, New Mexico 87505

Form C-1

Revised JUNE 10, 2

Submit to Appropriate District Off

State Lease - 4 Cop

Fee Lease - 3 Cop

WELL LOCATION AND ACREAGE DEDICATION PLAT

☐ AMENDED REPO

API Number	Pool Code	Pool Name
Property Code	Property Name RED LAKE 36 C	Well Number 2
OGRID No. 224400	Operator Name EDGE PETROLEUM OPERATING COMPANY, INC.	Elevation 3611'

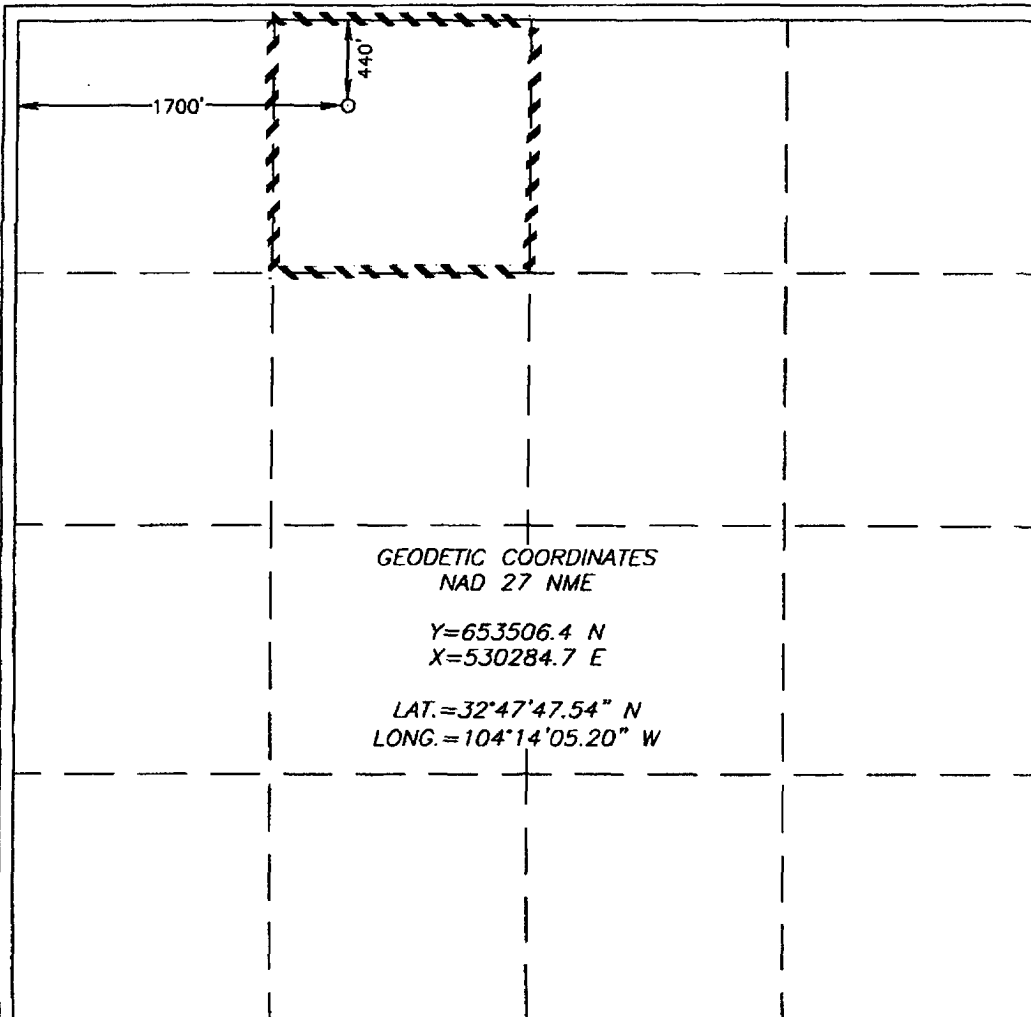
Surface Location

UL or lot No.	Section	Township	Range	Lot Idn	Feet from the	North/South line	Feet from the	East/West line	County
C	36	17-S	27-E		440	NORTH	1700	WEST	EDDO

Bottom Hole Location If Different From Surface

UL or lot No.	Section	Township	Range	Lot Idn	Feet from the	North/South line	Feet from the	East/West line	County
Dedicated Acres 40	Joint or Infill	Consolidation Code	Order No.						

NO ALLOWABLE WILL BE ASSIGNED TO THIS COMPLETION UNTIL ALL INTERESTS HAVE BEEN CONSOLIDATED
OR A NON-STANDARD UNIT HAS BEEN APPROVED BY THE DIVISION



OPERATOR CERTIFICATION

I hereby certify the the information
contained herein is true and complete to the
best of my knowledge and belief.

Jim Keisling
Signature

Jim Keisling
Printed Name

V.P. Production
Title

3-3-05
Date

SURVEYOR CERTIFICATION

I hereby certify that the well location shown
on this plat was plotted from field notes of
actual surveys made by me or under my
supervision, and that the same is true and
correct to the best of my belief.

FEBRUARY 7, 2005

Date Surveyed G. EIDSON JR

Signature of Seal MEXICO
Professional Surveyor

12641
05.11.0173
3/3/05

Certificate No. 12641