

RECEIVED

Form 3160-5  
(April 2004)

JUN 20 2011

UNITED STATES  
DEPARTMENT OF THE INTERIOR  
BUREAU OF LAND MANAGEMENT

Operator Copy

FORM APPROVED  
OMB No. 1004-0137  
Expires March 31, 2007

EA 11-446

## BOPCO WTD PRODUCED SURFACE NOTICES AND REPORTS ON WELLS

Do not use this form for proposals to drill or to re-enter an abandoned well. Use Form 3160-3 (APD) for such proposals.

SUBMIT IN TRIPLICATE- Other instructions on reverse side.

1. Type of Well  
☒ Oil Well ☐ Gas Well ☐ Other

2. Name of Operator BOPCO, L. P.

3a. Address  
P. O. Box 2760, Midland, TX 797023b. Phone No. (include area code)  
432-683-2277

4. Location of Well (Footage, Sec., T., R., M., or Survey Description)

Surface: SENW, UL E, 1650' FNL, 660' FWL, Lat N32.220506, Long W103.840325  
Bottom Hole: 1580' FNL, 1150' FWL, Sec 11, T24S, R30E, Lat N32.235133, Lg W103.856072

5. Lease Serial No.

L.C. 068905

6. If Indian, Allottee or Tribe Name

7. If Unit or CA/Agreement, Name and/or No.

NMNM71016F

8. Well Name and No.

Poker Lake Unit #315H

9. API Well No.

30-005-39166

10. Field and Pool, or Exploratory Area

Quahada Ridge SE (Delaware)

11. County or Parish, State

Sec 13, T24S, R30E, Mer NMP

POKER LAKE  
DEL NW

## 12. CHECK APPROPRIATE BOX(ES) TO INDICATE NATURE OF NOTICE, REPORT, OR OTHER DATA

## TYPE OF SUBMISSION

- ☒
- Notice of Intent
- 
- ☐
- Subsequent Report
- 
- ☐
- Final Abandonment Notice

## TYPE OF ACTION

- ☐
- Acidize
- 
- ☒
- Alter Casing
- 
- ☐
- Casing Repair
- 
- ☒
- Change Plans
- 
- ☐
- Convert to Injection
- 
- ☐
- Deepen
- 
- ☐
- Fracture Treat
- 
- ☐
- New Construction
- 
- ☐
- Plug and Abandon
- 
- ☐
- Plug Back
- 
- ☐
- Production (Start/Resume)
- 
- ☐
- Reclamation
- 
- ☐
- Recomplete
- 
- ☐
- Temporarily Abandon
- 
- ☐
- Water Disposal
- 
- ☐
- Water Shut-Off
- 
- ☐
- Well Integrity
- 
- ☒
- Other Alter Surface Location

13. Describe Proposed or Completed Operation (clearly state all pertinent details, including estimated starting date of any proposed work and approximate duration thereof. If the proposal is to deepen directionally or recomple horizontally, give subsurface locations and measured and true vertical depths of all pertinent markers and zones. Attach the Bond under which the work will be performed or provide the Bond No. on file with BLM/BIA. Required subsequent reports shall be filed within 30 days following completion of the involved operations. If the operation results in a multiple completion or recompletion in a new interval, a Form 3160-4 shall be filed once testing has been completed. Final Abandonment Notices shall be filed only after all requirements, including reclamation, have been completed, and the operator has determined that the site is ready for final inspection.)

BOPCO, L.P. respectfully requests the changes listed below to be approved for the above captioned well.

A new SL from the approved footages of 1650' FNL, 660' FWL, SEC 13, T24S, R30 to 1650' FNL, 710' FWL, SEC 13, T24S, R30. This 50' eastward movement is to avoid an undrilled, permitted well with the same intended surface location as the PLU 315H. New location approved by Randy Rust of the BLM during on-site on 5/5/2011.

9209' of 7", 26", N-80, LTC casing will be run and cemented as follows:

Stage 1: Lead - 200 sks Tuned Light Cement + additives (2.76 ft3/sk, 10.2 lbm/gal); Tail - 270 sks VersaCem + additives (1.65 ft3/sk, 13.0 lbm/gal)

Stage 2: Lead - 370 sks EconoCem + additives (2.04 ft3/sk, 12.60 lbm/gal); Tail - 100 sks HalCem + additives (1.33 ft3/sk, 14.8 lbm/gal).

Revised directional plan attached.

Engineering OK.

6-9-11

6/14/2011 Ted Mogen Petroleum Engineer

Surface - Recommended Approval, on site move 5-5-11, PWR

14. I hereby certify that the foregoing is true and correct  
Name (Printed/Typed)

Pete Lenzing

Title Drilling Engineer

Signature

Date

6/9/11

## THIS SPACE FOR FEDERAL OR STATE OFFICE USE

Approved by

Title

FIELD MANAGER

Date

JUN 14 2011

Conditions of approval, if any, are attached. Approval of this notice does not warrant or certify that the applicant holds legal or equitable title to those rights in the subject lease which would entitle the applicant to conduct operations thereon.

CARLSBAD FIELD OFFICE

Title 18 U.S.C. Section 1001 and Title 43 U.S.C. Section 1212, make it a crime for any person knowingly and willfully to make to any department or agency of the United States any false, fictitious or fraudulent statements or representations as to any matter within its jurisdiction.

(Instructions on page 2)

DISTRICT I  
1625 N. French Dr., Hobbs, NM 88240

DISTRICT II  
1301 W. Grand Avenue, Artesia, NM 88210

DISTRICT III  
1000 Rio Brazos Rd., Aztec, NM 87410

DISTRICT IV  
1220 S. St. Francis Dr., Santa Fe, NM 87505

State of New Mexico  
Energy, Minerals and Natural Resources Department

OIL CONSERVATION DIVISION  
1220 South St. Francis Dr.  
Santa Fe, New Mexico 87505

Form C-102  
Revised July 16, 2010

Submit one copy to appropriate  
District Office

WELL LOCATION AND ACREAGE DEDICATION PLAT

AMENDED REPORT

API Number <b>30-015-39166</b>	Pool Code <b>96046</b>	Pool Name <b>Poker Lake NW (Delaware)</b>
Property Code <b>306402</b>	Property Name <b>POKER LAKE UNIT</b>	Well Number <b>315H</b>
OGRID No. <b>260737</b>	Operator Name <b>BOPCO, L.P.</b>	Elevation <b>3474'</b>

Surface Location

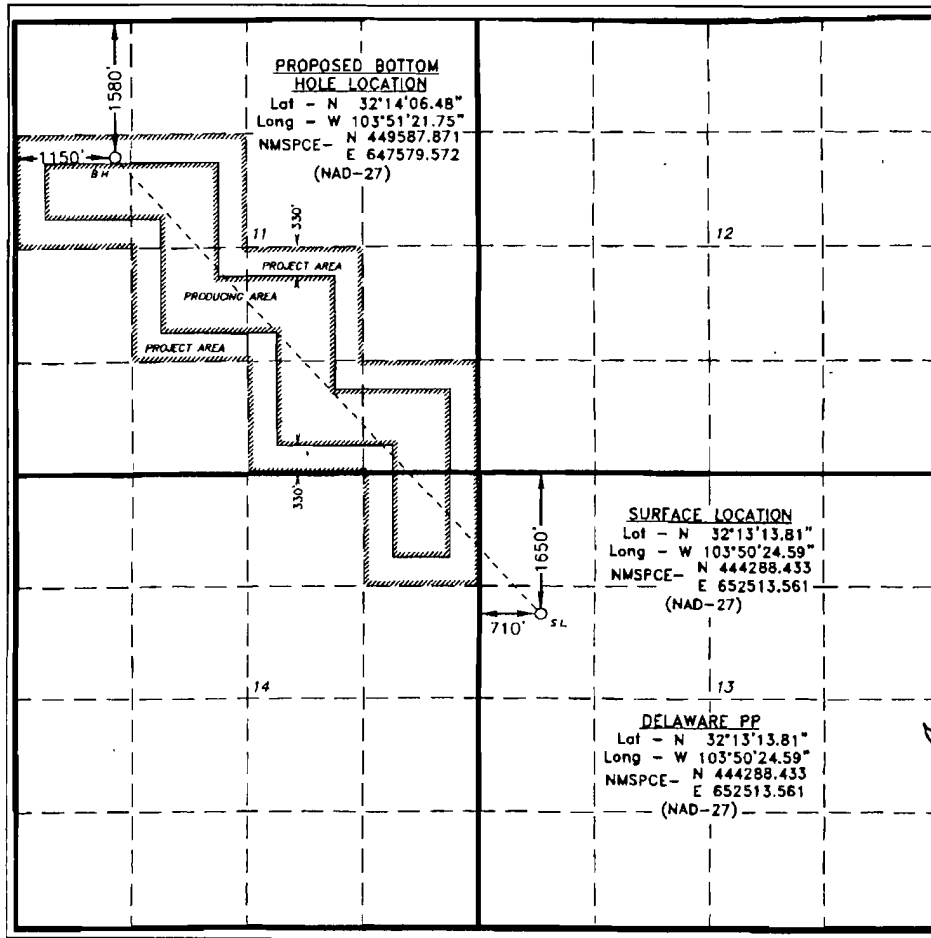
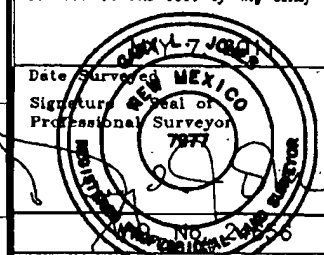
UL or lot No.	Section	Township	Range	Lot Idn	Feet from the	North/South line	Feet from the	East/West line	County
E	13	24 S	30 E		1650	NORTH	710	WEST	EDDY

Bottom Hole Location If Different From Surface

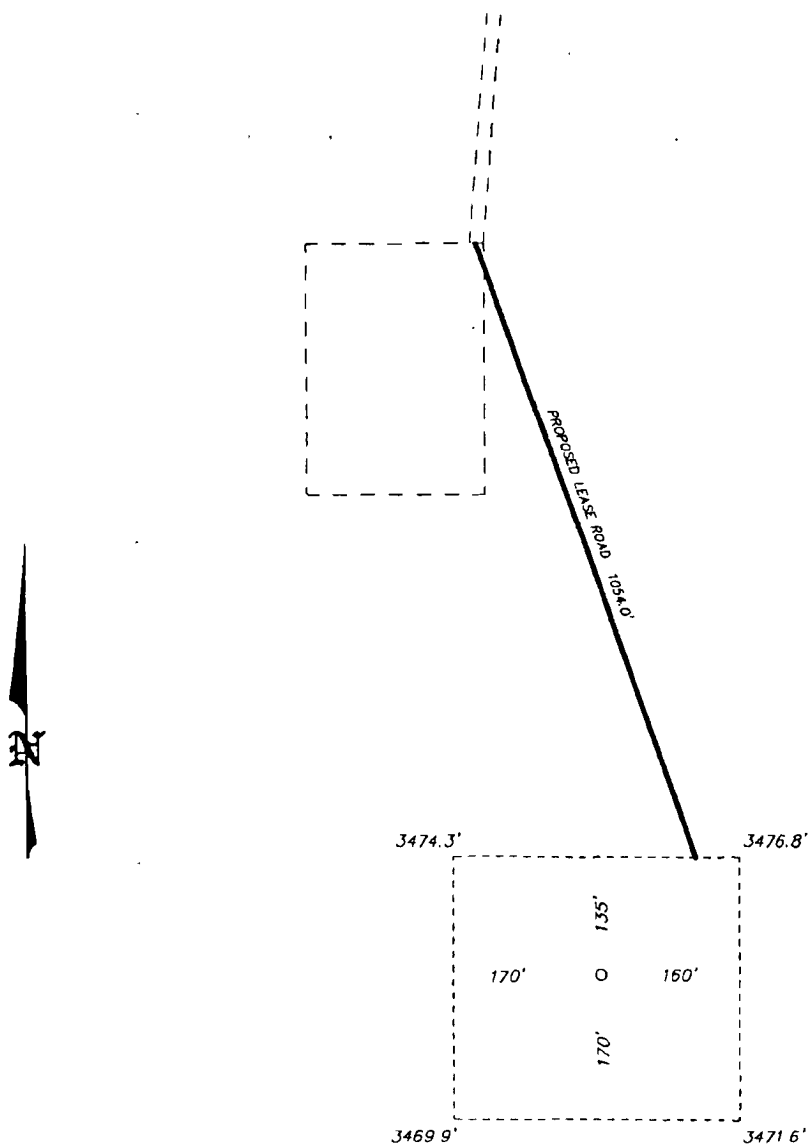
UL or lot No.	Section	Township	Range	Lot Idn	Feet from the	North/South line	Feet from the	East/West line	County
E	11	24 S	30 E		1580	NORTH	1150	WEST	EDDY

Dedicated Acres	Joint or Infill	Consolidation Code	Order No.
-----------------	-----------------	--------------------	-----------

NO ALLOWABLE WILL BE ASSIGNED TO THIS COMPLETION UNTIL ALL INTERESTS HAVE BEEN CONSOLIDATED  
OR A NON-STANDARD UNIT HAS BEEN APPROVED BY THE DIVISION

	<p><b>OPERATOR CERTIFICATION</b></p> <p>I hereby certify that the information contained herein is true and complete to the best of my knowledge and belief, and that this organization either owns a working interest or leased mineral interest in the land including the proposed bottom hole location or has a right to drill this well at this location pursuant to a contract with an owner of such a mineral or working interest, or to a voluntary pooling agreement or a compulsory pooling order heretofore entered by the division.</p> <p><i>Pete Lensing</i> 6/9/11 Signature Date</p> <p>Pete Lensing Printed Name</p> <p>PAensing@basspet.com Email Address</p> <p><b>SURVEYOR CERTIFICATION</b></p> <p>I hereby certify that the well location shown on this plat was plotted from field notes of actual surveys made by me or under my supervision, and that the same is true and correct to the best of my belief.</p> <p></p> <p>Date Surveyed Signature of Professional Surveyor Certificate No. Gary L. Jones 7977</p> <p>BASIN SURVEYS 24656</p>
-------------------------------------------------------------------------------------	--------------------------------------------------------------------------------------------------------------------------------------------------------------------------------------------------------------------------------------------------------------------------------------------------------------------------------------------------------------------------------------------------------------------------------------------------------------------------------------------------------------------------------------------------------------------------------------------------------------------------------------------------------------------------------------------------------------------------------------------------------------------------------------------------------------------------------------------------------------------------------------------------------------------------------------------------------------------------------------------------------------------------------------------------------------------------------------------------------------------------------------------------------------------------------

SECTION 13, TOWNSHIP 24 SOUTH, RANGE 30 EAST, N.M.P.M.,  
EDDY COUNTY, NEW MEXICO.

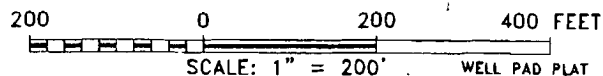


BOPCO, L.P.  
POKER LAKE UNIT #315H  
ELEV. - 3474'

Lat - N 32°13'13.81"  
Long - W 103°50'24.59"  
NMSPCE- N 444288.433  
E 652513.561  
(NAD-27)

Directions to Location:

FROM THE JUNCTION OF TWIN WELLS AND McDONALD,  
GO NORTHEAST 3.7 MILES TO LEASE ROAD, ON  
LEASE ROAD GO NORTH TURNING WEST 1.5 MILES  
TURNING SOUTH 0.1 MILES TO WELL PAD AND  
PROPOSED LEASE ROAD



**BOPCO, L.P.**

REF: POKER LAKE UNIT #315H / WELL PAD TOPO

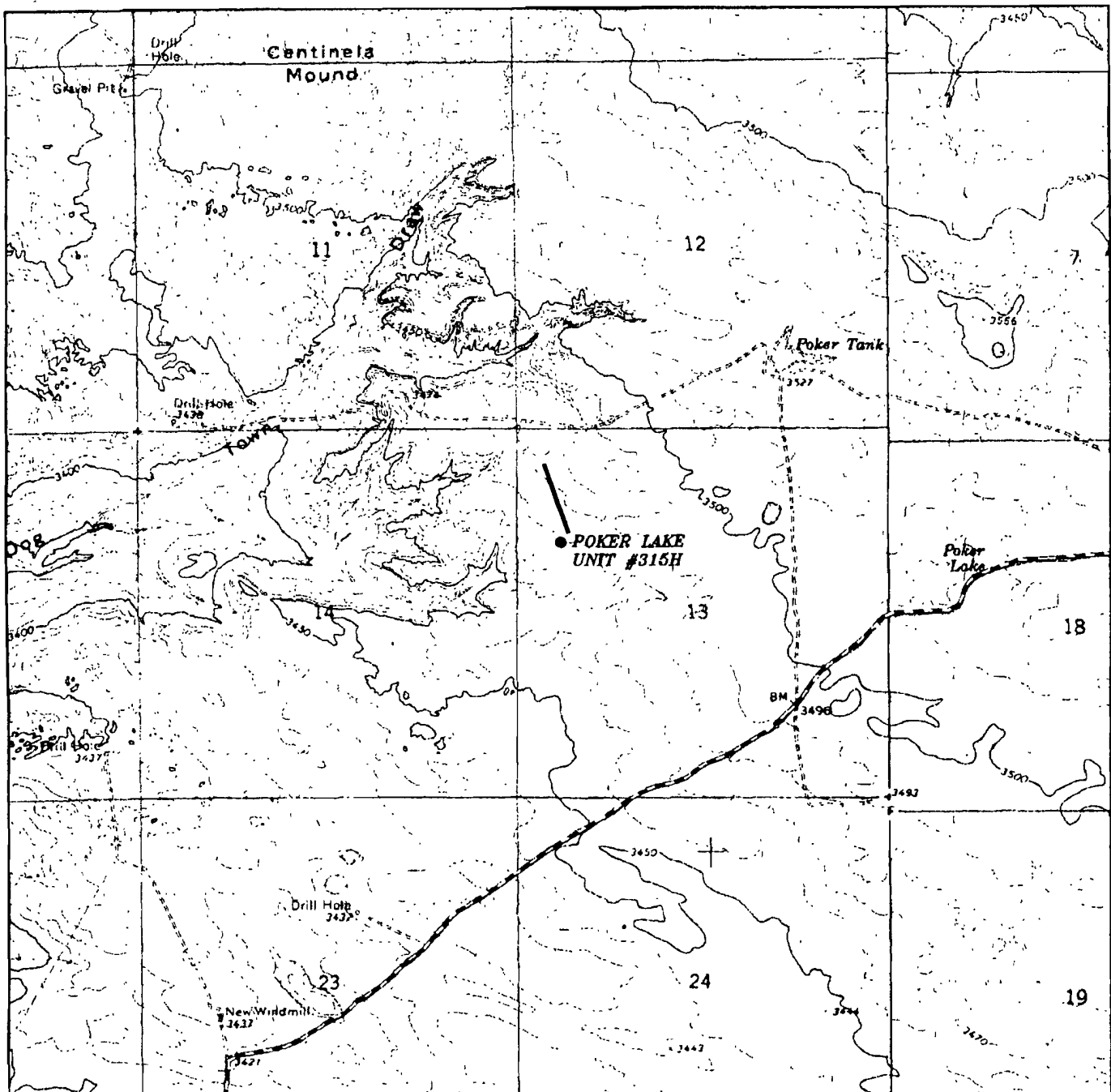
THE POKER LAKE UNIT #315H LOCATED 1650'  
FROM THE NORTH LINE AND 710' FROM THE WEST LINE OF  
SECTION 13, TOWNSHIP 24 SOUTH, RANGE 30 EAST,  
N.M.P.M., EDDY COUNTY, NEW MEXICO.

**BASIN SURVEYS** P.O. BOX 1786 - HOBBS, NEW MEXICO

W.O. Number. 24656 Drawn By. J. SMALL

Date 05-12-2011 Disk: JMS 24656

Survey Date: 05-07-2011 Sheet 1 of 1 Sheets



# POKER LAKE UNIT #315H

Located 1650' FNL and 710' FWL

Section 13, Township 24 South, Range 30 East,  
N.M.P.M., Eddy County, New Mexico.

TOPO PLAT

**basin**  
**surveys**  
focused on excellence  
in the oilfield

P.O. Box 1786  
1120 N. West County Rd.  
Hobbs, New Mexico 88241  
(575) 393-7316 - Office  
(575) 392-2206 - Fax  
basinsurveys.com

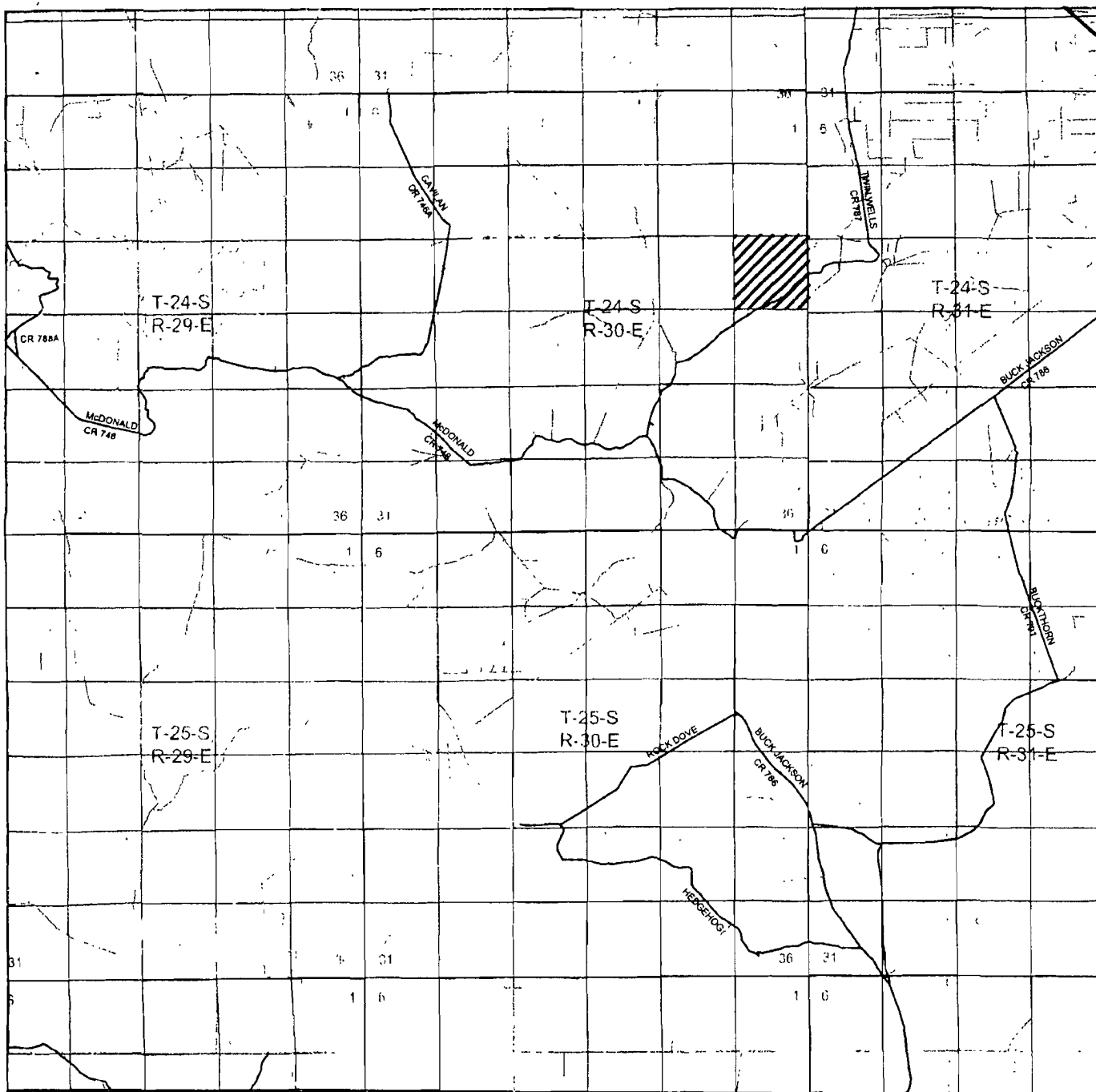
W.O. Number: JMS 24656

Survey Date: 05-07-2011

Scale: 1" = 2000'

Date: 05-12-2011

*BOPCO, L.P.*

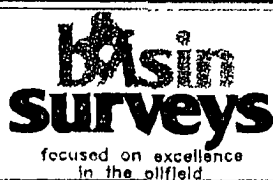


# POKER LAKE UNIT #315H

Located 1650' FNL and 710' FWL

Section 13, Township 24 South, Range 30 East,  
N.M.P.M., Eddy County, New Mexico.

ROAD MAP PLAT



P.O. Box 1786  
1120 N. West County Rd.  
Hobbs, New Mexico 88241  
(575) 393-7316 - Office  
(575) 392-2206 - Fax  
basinsurveys.com

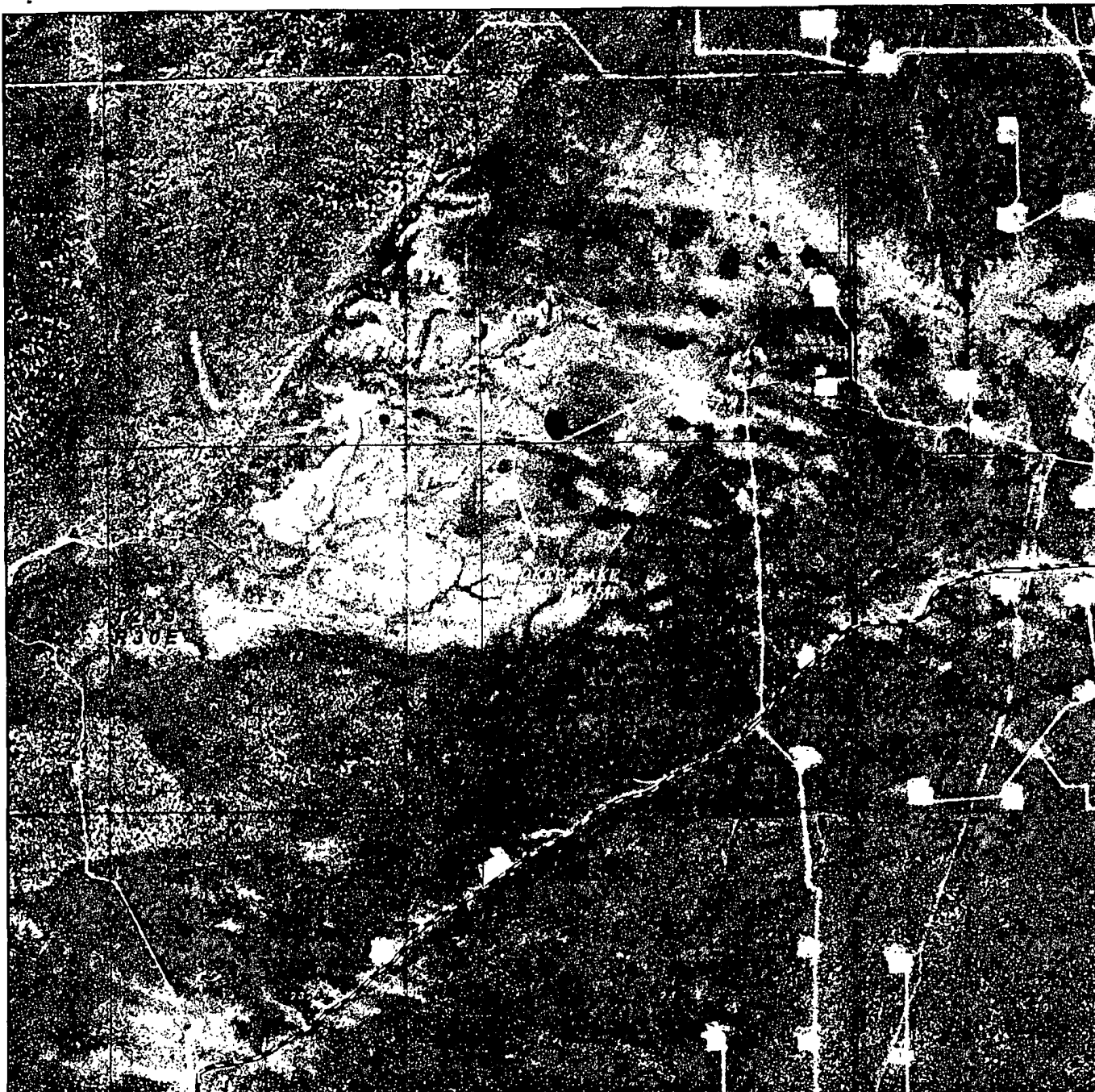
W.O. Number JMS 24656

Survey Date: 05-07-2011

Scale: 1" = 2 Miles

Date: 05-12-2011

BOPCO, L.P.



**POKER LAKE UNIT #315H**

Located 1650' FNL and 710' FWL

Section 13, Township 24 South, Range 30 East,  
N.M.P.M., Eddy County, New Mexico.

AERIAL PLAT

**basin  
surveys**

focused on excellence  
in the oilfield

P.O. Box 1786  
1170 N. West County Rd.  
Hobbs, New Mexico 88241  
(575) 393-7316 - Office  
(575) 392-2206 - Fax  
basinsurveys.com

W.O. Number: JMS 24656

Scale: 1" = 2000'

YELLOW TINT - USA LAND  
BLUE TINT - STATE LAND  
NATURAL COLOR - FEE LAND

**BOPCO, L.P.**

RECEIVED

Form 3160-5  
(April 2004)

JUN 20 2011

UNITED STATES  
DEPARTMENT OF THE INTERIOR  
BUREAU OF LAND MANAGEMENT

Operator Copy

FORM APPROVED  
OMB No 1004-0137  
Expires March 31, 2007

EA 11-446

## BOPCO WTD PROD SURF NOTICES AND REPORTS ON WELLS

Do not use this form for proposals to drill or to re-enter an abandoned well. Use Form 3160-3 (APD) for such proposals.

## SUBMIT IN TRIPLICATE- Other instructions on reverse side.

1. Type of Well  
☒ Oil Well ☐ Gas Well ☐ Other2. Name of Operator  
BOPCO, L. P.3a. Address  
P. O. Box 2760, Midland, TX 797023b. Phone No. (include area code)  
432-683-2277

4. Location of Well (Footage, Sec., T., R., M., or Survey Description)

Surface: SENW, UL E, 1650' FNL, 660' FWL, Lat N32.220506, Long W103.840325  
Bottom Hole: 1580' FNL, 1150' FWL, Sec 11, T24S, R30E, Lat N32.235133, Lg W103.8560725. Lease Serial No.  
LC 068905

6. If Indian, Allottee or Tribe Name

7. If Unit or CA/Agreement, Name and/or No.  
NMNM71016F8. Well Name and No.  
Poker Lake Unit #315H

9. API Well No

10. Field and Pool, or Exploratory Area  
Quahada Ridge SE (Delaware)

11. County or Parish, State

Sec 13, T24S, R30E, Mer NMP

## 12. CHECK APPROPRIATE BOX(ES) TO INDICATE NATURE OF NOTICE, REPORT, OR OTHER DATA

## TYPE OF SUBMISSION

- ☒
- Notice of Intent
- 
- ☐
- Subsequent Report
- 
- ☐
- Final Abandonment Notice

## TYPE OF ACTION

- ☐
- Acidize
- 
- ☒
- Alter Casing
- 
- ☐
- Casing Repair
- 
- ☒
- Change Plans
- 
- ☐
- Convert to Injection
- 
- ☐
- Deepen
- 
- ☐
- Fracture Treat
- 
- ☐
- New Construction
- 
- ☐
- Plug and Abandon
- 
- ☐
- Plug Back
- 
- ☐
- Production (Start/Resume)
- 
- ☐
- Reclamation
- 
- ☐
- Recomplete
- 
- ☐
- Temporarily Abandon
- 
- ☐
- Water Disposal
- 
- ☐
- Water Shut-Off
- 
- ☐
- Well Integrity
- 
- ☒
- Other Alter Surface

Location

13. Describe Proposed or Completed Operation (clearly state all pertinent details, including estimated starting date of any proposed work and approximate duration thereof. If the proposal is to deepen directionally or recomple horizontally, give subsurface locations and measured and true vertical depths of all pertinent markers and zones. Attach the Bond under which the work will be performed or provide the Bond No. on file with BLM/BIA. Required subsequent reports shall be filed within 30 days following completion of the involved operations. If the operation results in a multiple completion or recomple in a new interval, a Form 3160-4 shall be filed once testing has been completed. Final Abandonment Notices shall be filed only after all requirements, including reclamation, have been completed, and the operator has determined that the site is ready for final inspection.)

BOPCO, L.P. respectfully requests the changes listed below to be approved for the above captioned well.

A new SL from the approved footages of 1650' FNL, 660' FWL, SEC 13, T24S, R30 to 1650' FNL, 710' FWL, SEC 13, T24S, R30. This 50' eastward movement is to avoid an undrilled, permitted well with the same intended surface location as the PLU 315H. New location approved by Randy Rust of the BLM during on-site on 5/5/2011.

9209' of 7", 26", N-80, LTC casing will be run and cemented as follows:

Stage 1: Lead - 200 sks Toned Light Cement + additives (2.76 ft3/sk, 10.2 lbm/gal); Tail - 270 sks VersaCem + additives (1.65 ft3/sk, 13.0 lbm/gal)

Stage 2: Lead - 370 sks EconoCem + additives (2.04 ft3/sk, 12.60 lbm/gal); Tail - 100 sks HalCem + additives (1.33 ft3/sk, 14.8 lbm/gal).

Revised directional plan attached.

Engineering OK.

6-9-11

6/14/2011 Ted Mungen Petroleum Engineer

Surface - Recommend Approval, on site move 5-5-11, PWR

14. I hereby certify that the foregoing is true and correct  
Name (Printed/Typed)

Pete Lansing

Title Drilling Engineer

Signature

Date

## THIS SPACE FOR FEDERAL OR STATE OFFICE USE

Approved by

Title

FIELD MANAGER

Date

JUN 14 2011

Conditions of approval, if any, are attached. Approval of this notice does not warrant or certify that the applicant holds legal or equitable title to those rights in the subject lease which would entitle the applicant to conduct operations thereon

CARLSBAD FIELD OFFICE

Title 18 U.S.C. Section 1001 and Title 43 U.S.C. Section 1212, make it a crime for any person knowingly and willfully to make to any department or agency, of the United States any false, fictitious or fraudulent statements or representations as to any matter within its jurisdiction.

(Instructions on page 2)

DISTRICT I  
1025 N. French Dr., Hobbs, NM 88240

DISTRICT II  
1301 W. Grand Avenue, Artesia, NM 88210

DISTRICT III  
1000 Rio Brazos Rd., Aztec, NM 87410

DISTRICT IV  
1220 S. St. Francis Dr., Santa Fe, NM 87505

State of New Mexico  
Energy, Minerals and Natural Resources Department

Form C-102  
Revised July 16, 2010

Submit one copy to appropriate  
District Office

OIL CONSERVATION DIVISION  
1220 South St. Francis Dr.  
Santa Fe, New Mexico 87505

WELL LOCATION AND ACREAGE DEDICATION PLAT

☐ AMENDED REPORT

API Number	Pool Code 96046	Pool Name Poker Lake NW (Delaware)
Property Code 306402	Property Name POKER LAKE UNIT	Well Number 315H
OGRID No. 260737	Operator Name BOPCO, L.P.	Elevation 3474'

Surface Location

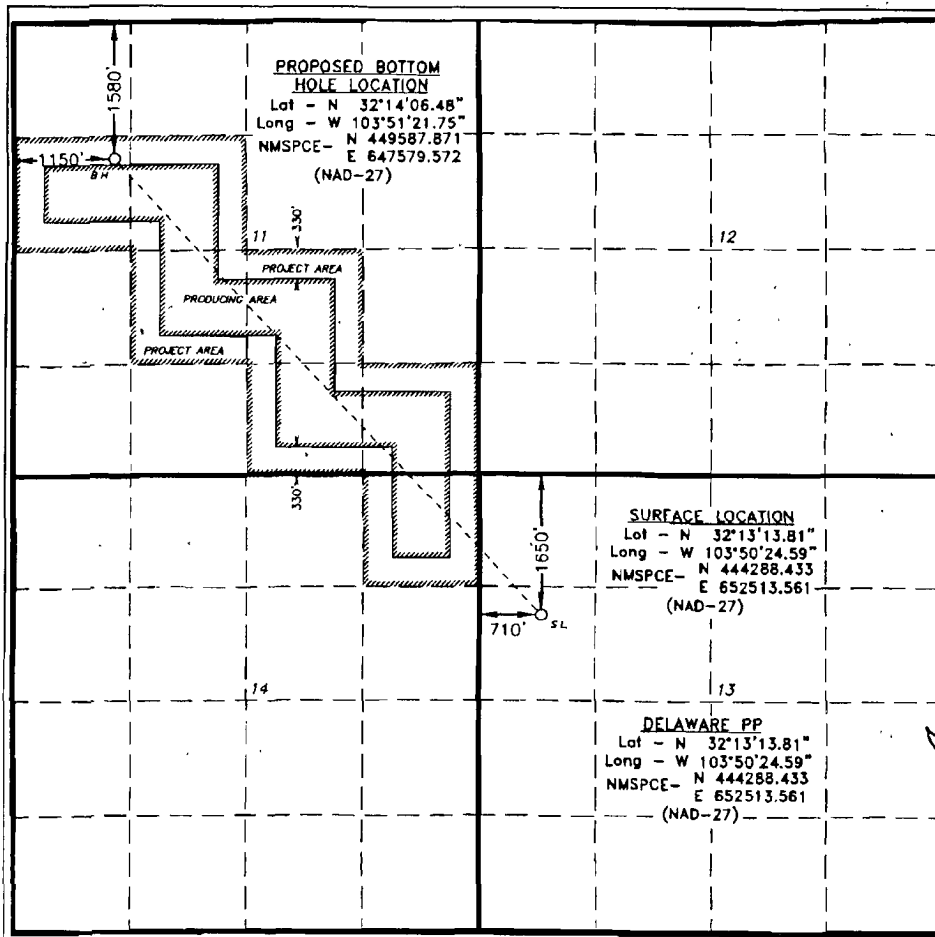
UL or lot No.	Section	Township	Range	Lot Idn	Feet from the	North/South line	Feet from the	East/West line	County
E	13	24 S	30 E		1650	NORTH	710	WEST	EDDY

Bottom Hole Location If Different From Surface

UL or lot No.	Section	Township	Range	Lot Idn	Feet from the	North/South line	Feet from the	East/West line	County
E	11	24 S	30 E		1580	NORTH	1150	WEST	EDDY

Dedicated Acres	Joint or Infill	Consolidation Code	Order No.

NO ALLOWABLE WILL BE ASSIGNED TO THIS COMPLETION UNTIL ALL INTERESTS HAVE BEEN CONSOLIDATED  
OR A NON-STANDARD UNIT HAS BEEN APPROVED BY THE DIVISION



OPERATOR CERTIFICATION

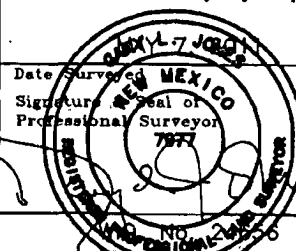
I hereby certify that the information contained herein is true and complete to the best of my knowledge and belief, and that this organization either owns a working interest or unleased mineral interest in the land including the proposed bottom hole location or has a right to drill this well at this location pursuant to a contract with an owner of such a mineral or working interest, or to a voluntary pooling agreement or a compulsory pooling order heretofore entered by the division.

*Pete Lensing* 6/9/11  
Signature Date

Pete Lensing  
Printed Name  
PALensing@basspet.com  
Email Address

SURVEYOR CERTIFICATION

I hereby certify that the well location shown on this plat was plotted from field notes of actual surveys made by me or under my supervision, and that the same is true and correct to the best of my belief.

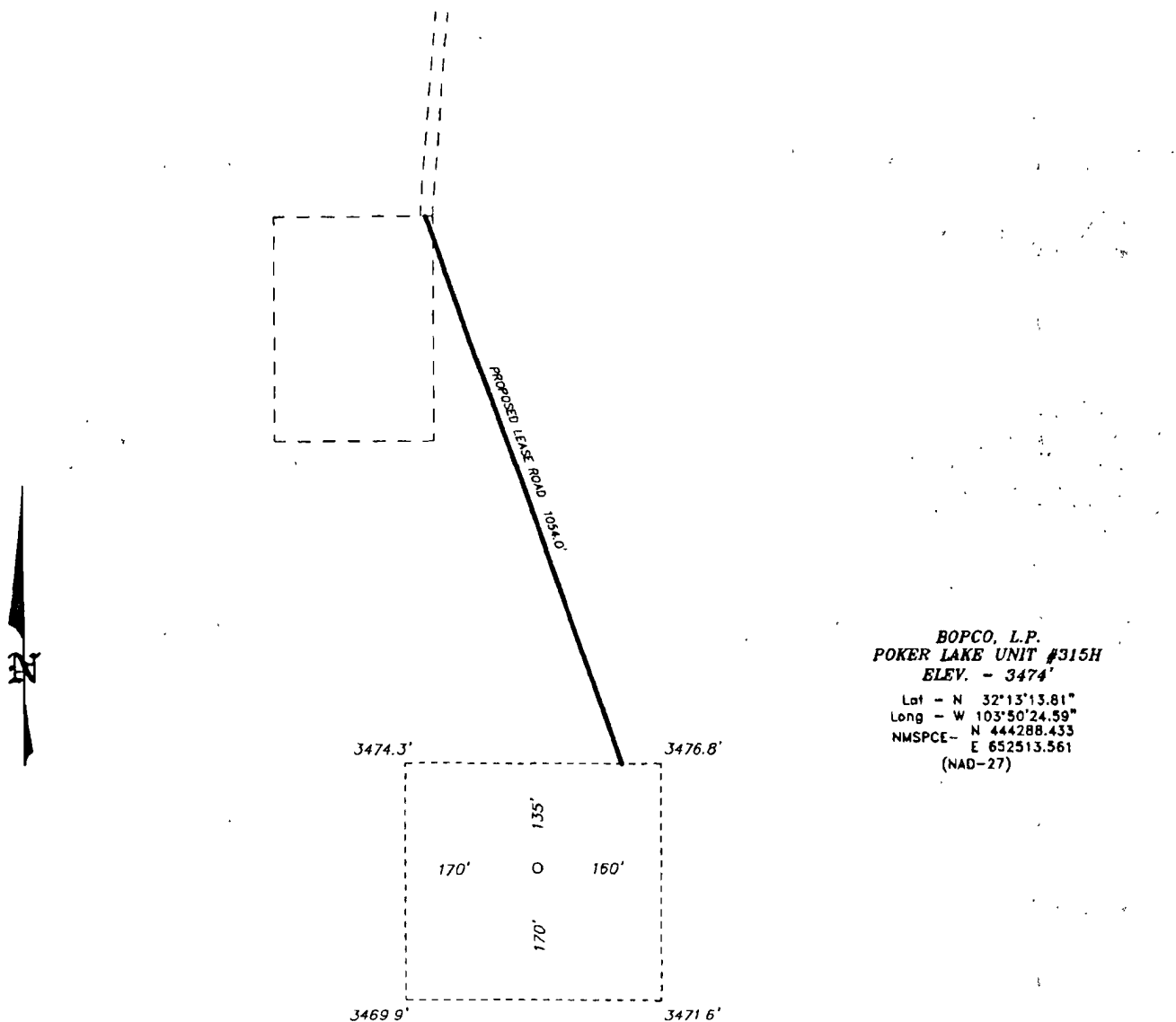


Certificate No. GARY L. Jones 7977

BASIN SURVEYS 24656

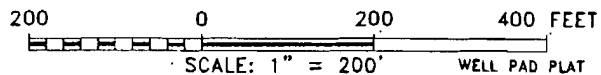


SECTION 13, TOWNSHIP 24 SOUTH, RANGE 30 EAST, N.M.P.M.,  
EDDY COUNTY, NEW MEXICO.



Directions to Location

FROM THE JUNCTION OF TWIN WELLS AND McDONALD,  
GO NORTHEAST 3.7 MILES TO LEASE ROAD, ON  
LEASE ROAD GO NORTH TURNING WEST 1.5 MILES  
TURNING SOUTH 0.1 MILES TO WELL PAD AND  
PROPOSED LEASE ROAD



**BOPCO, L.P.**

REF: POKER LAKE UNIT #315H / WELL PAD TOPO

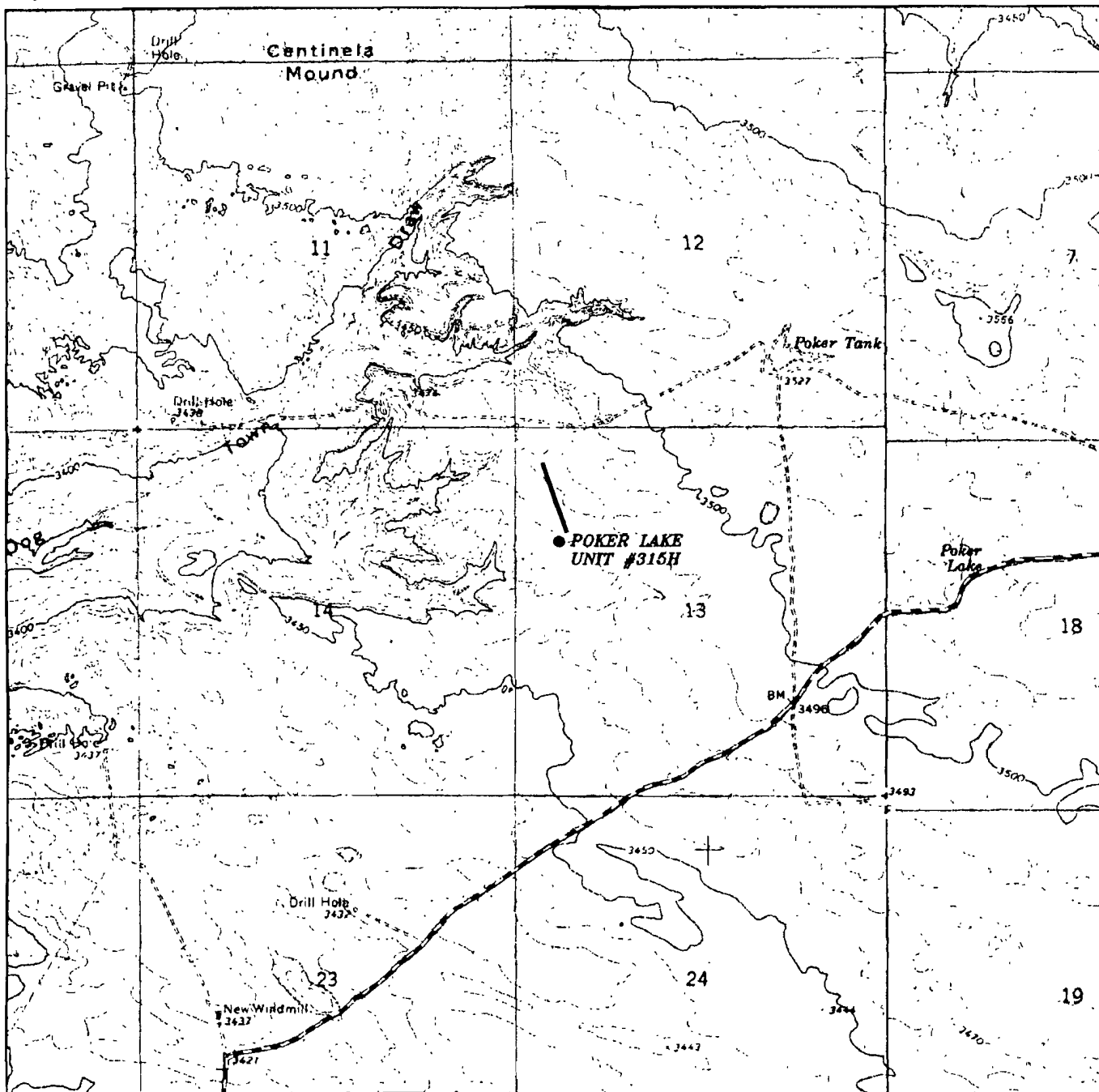
THE POKER LAKE UNIT #315H LOCATED 1650'  
FROM THE NORTH LINE AND 710' FROM THE WEST LINE OF  
SECTION 13, TOWNSHIP 24 SOUTH, RANGE 30 EAST,  
N.M.P.M., EDDY COUNTY, NEW MEXICO.

**BASIN SURVEYS** P.O. BOX 1786 - HOBBS, NEW MEXICO

W.O. Number: 24656 Drawn By: J. SMALL

Date: 05-12-2011 Disk: JMS 24656

Survey Date: 05-07-2011 Sheet 1 of 1 Sheets



**POKER LAKE UNIT #315H**  
 Located 1650' FNL and 710' FWL  
 Section 13, Township 24 South, Range 30 East,  
 N.M.P.M., Eddy County, New Mexico.

TOPO PLAT

**basin**  
**surveys**  
 focused on excellence  
 in the oilfield

P.O. Box 1786  
 1120 N. West County Rd.  
 Hobbs, New Mexico 88241  
 (575) 393-7316 - Office  
 (575) 392-2206 - Fax  
 basin-surveys.com

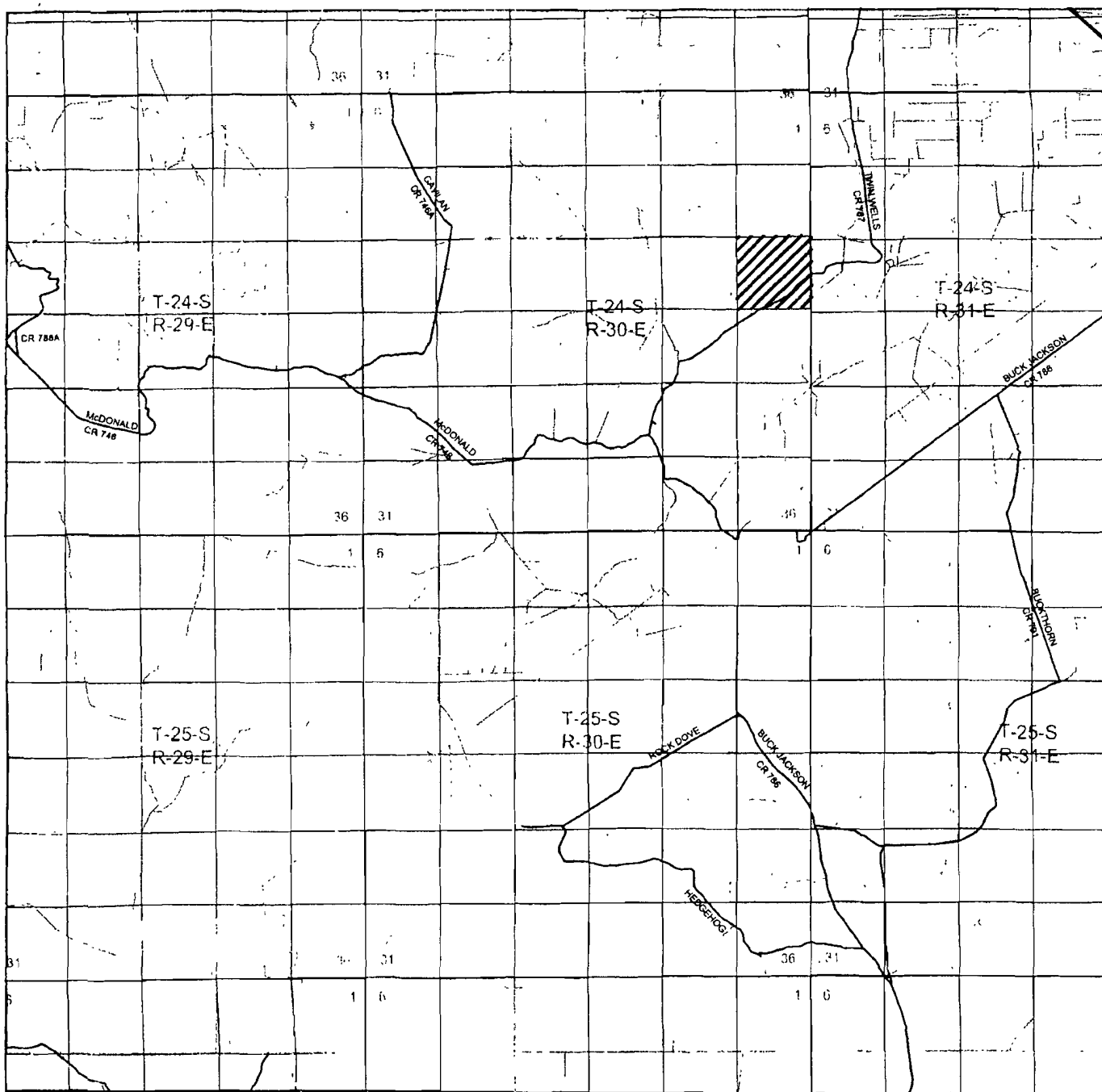
W.O. Number: JMS 24656

Survey Date: 05-07-2011

Scale: 1" = 2000'

Date: 05-12-2011

*BOPCO, L.P.*



# POKER LAKE UNIT #315H

Located 1650' FNL and 710' FWL

Section 13, Township 24 South, Range 30 East,  
N.M.P.M., Eddy County, New Mexico.

ROAD MAP PLAT

**basin**  
**surveys**

focused on excellence  
in the oilfield

P.O. Box 1786  
1120 N. West County Rd.  
Hobbs, New Mexico 88241  
(575) 393-7316 - Office  
(575) 392-2208 - Fax  
basinsurveys.com

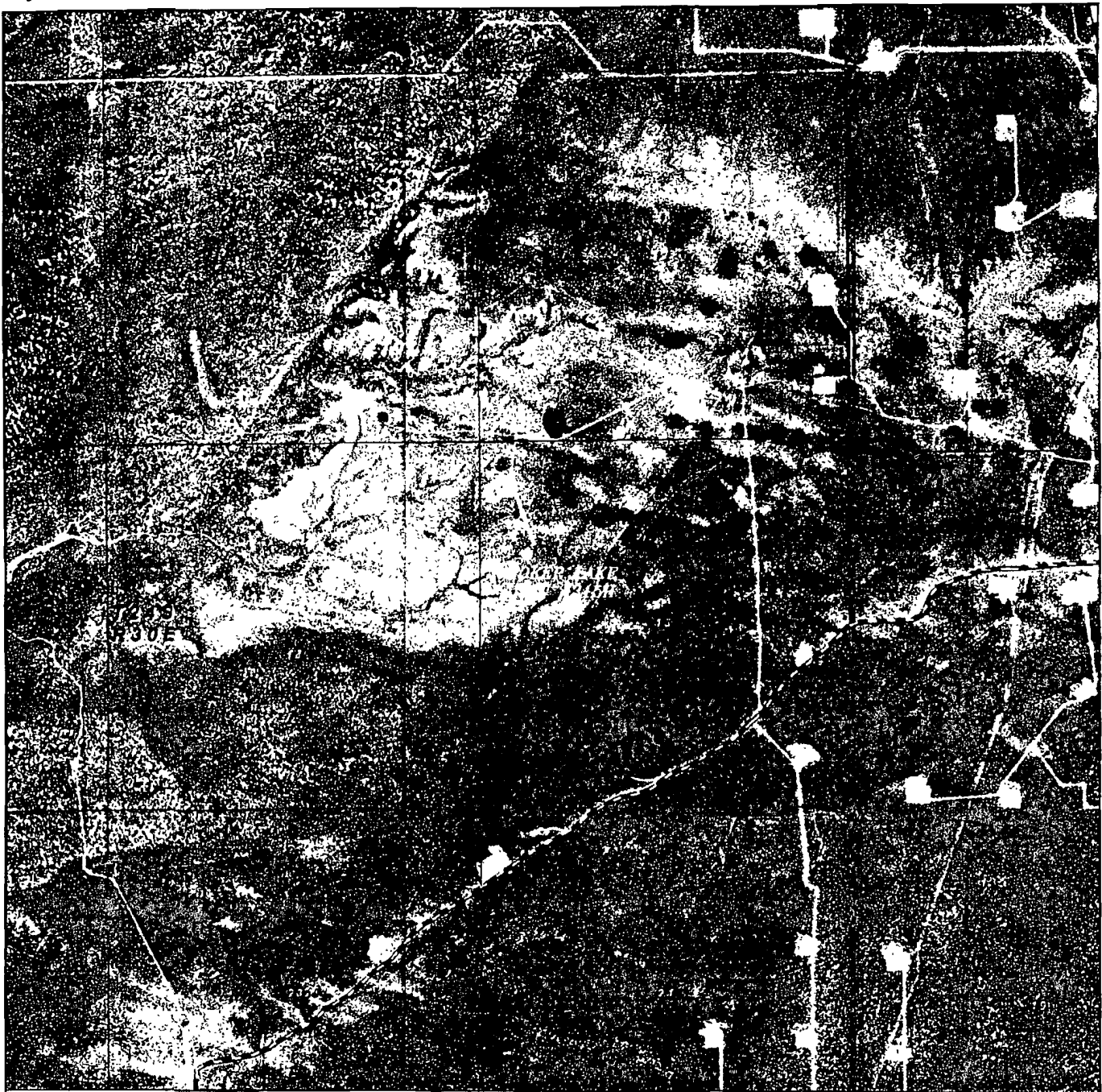
W.O. Number JMS 24656

Survey Date: 05-07-2011

Scale: 1" = 2 Miles

Date: 05-12-2011

*BOPCO, L.P.*



**POKER LAKE UNIT #315H**

Located 1650' FNL and 710' FWL

Section 13, Township 24 South, Range 30 East,  
N.M.P.M., Eddy County, New Mexico.

AERIAL PLAT

**basin**  
**surveys**

focused on excellence  
in the oilfield

P.O. Box 1786  
1120 N. West County Rd.  
Hobbs, New Mexico 88241  
(575) 393-7316 - Office  
(575) 392-2206 - Fax  
basinsurveys.com

W.O. Number: JMS . 24656

Scale: 1" = 2000'

YELLOW TINT - USA LAND  
BLUE TINT - STATE LAND  
NATURAL COLOR - FEE LAND

*BOPCO, L.P.*