

DISTRICT I
1625 N. FRENCH DR., HOBBS, NM 88240

State of New Mexico
Energy, Minerals and Natural Resources Department

RECEIVED

Form C-102

DISTRICT II
1301 W. GRAND AVENUE, ARTESTA, NM 88210

OIL CONSERVATION DIVISION
1220 SOUTH ST. FRANCIS DR.
Santa Fe, New Mexico 87505

NOV 29 2010
Revised October 12, 2005
Submit to Appropriate District Office
State Lease - 4 Copies
Fee Lease - 3 Copies

DISTRICT III
1000 Rio Brazos Rd., Aztec, NM 87410

DISTRICT IV
1220 S. ST FRANCIS DR., SANTA FE, NM 87505

WELL LOCATION AND ACREAGE DEDICATION PLAT

☐ AMENDED REPORT

API Number 30-015-39192	Pool Code 97019	Pool Name Wildcat; Abo
Property Code 38696	Property Name SUPER BOWL FEDERAL COM	Well Number 1
OGRID No. 013837	Operator Name MACK ENERGY CORPORATION	Elevation 3685'

Surface Location

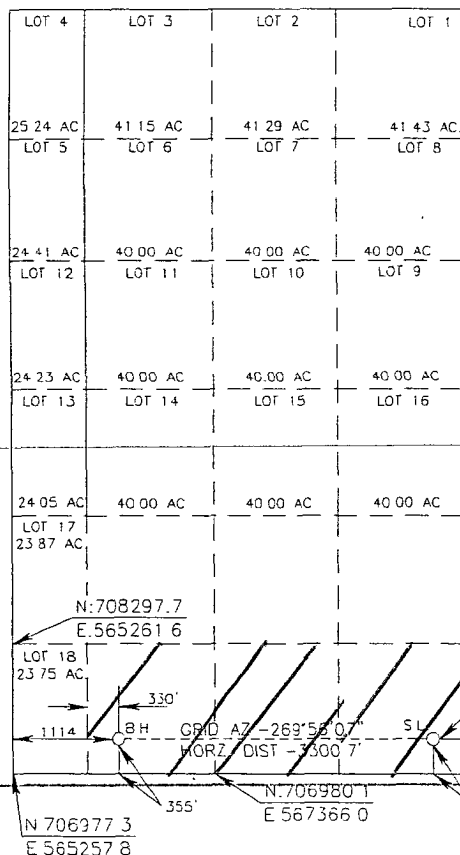
UL or lot No.	Section	Township	Range	Lot Idn	Feet from the	North/South line	Feet from the	East/West line	County
P	6	16-S	29-E		355	SOUTH	330	EAST	EDDY

Bottom Hole Location If Different From Surface

UL or lot No.	Section	Township	Range	Lot Idn	Feet from the	North/South line	Feet from the	East/West line	County
N	6	16-S	29-E		355	SOUTH	1114	WEST	EDDY

Dedicated Acres	Joint or Infill	Consolidation Code	Order No
120			

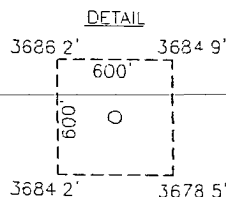
NO ALLOWABLE WILL BE ASSIGNED TO THIS COMPLETION UNTIL ALL INTERESTS HAVE BEEN CONSOLIDATED
OR A NON-STANDARD UNIT HAS BEEN APPROVED BY THE DIVISION



GEODETIC COORDINATES
NAD 27 NME
SURFACE LOCATION
Y=707337.4 N
X=569675.3 E

LAT.=32 944338" N
LONG.=104 106212" W

BOTTOM HOLE LOCATION
Y=707337.7 N
X=566375.4 E



OPERATOR CERTIFICATION

I hereby certify that the information herein is true and complete to the best of my knowledge and belief, and that this organization either owns a working interest or unleased mineral interest in the land including the proposed bottom hole location or has a right to drill this well at this location pursuant to a contract with an owner of such mineral or working interest, or to a voluntary pooling agreement or a compulsory pooling order heretofore entered by the division.

Jerry W. Sherrell 11-22-2010
Signature Date

Jerry W. Sherrell
Printed Name

SURVEYOR CERTIFICATION

I hereby certify that the well location shown on this plat was plotted from field notes of actual surveys made by me or under my supervision, and that the same is true and correct to the best of my belief.

DATE SURVEYED 11/24/10
Signature of Professional Surveyor
Professional Surveyor Seal
Certificate No. GARY EIDSON 12641
RONALD EIDSON 3239

RECEIVED
MAY 27 2011
NMOCD ARTESIA