

DISTRICT I
1625 N. French Dr., Hobbs, NM 88240
DISTRICT II
1301 W. Grand Avenue, Artesia, NM 88210
DISTRICT III
1000 Rio Brazos Rd., Aztec, NM 87410
DISTRICT IV
1220 S. St. Francis Dr., Santa Fe, NM 87505

State of New Mexico
Energy, Minerals and Natural Resources Department

Form C-102
Revised July 16, 2010

Submit one copy to appropriate
District Office

OIL CONSERVATION DIVISION
1220 South St. Francis Dr.
Santa Fe, New Mexico 87505

WELL LOCATION AND ACREAGE DEDICATION PLAT

☐ AMENDED REPORT

API Number 30-016-39237	Pool Code 49622	Pool Name Parkway, Bone Spring
Property Code 19266	Property Name PARKWAY "36" STATE	Well Number 4H
GRID No. 154903	Operator Name SM ENERGY	Elevation 3330'

Surface Location

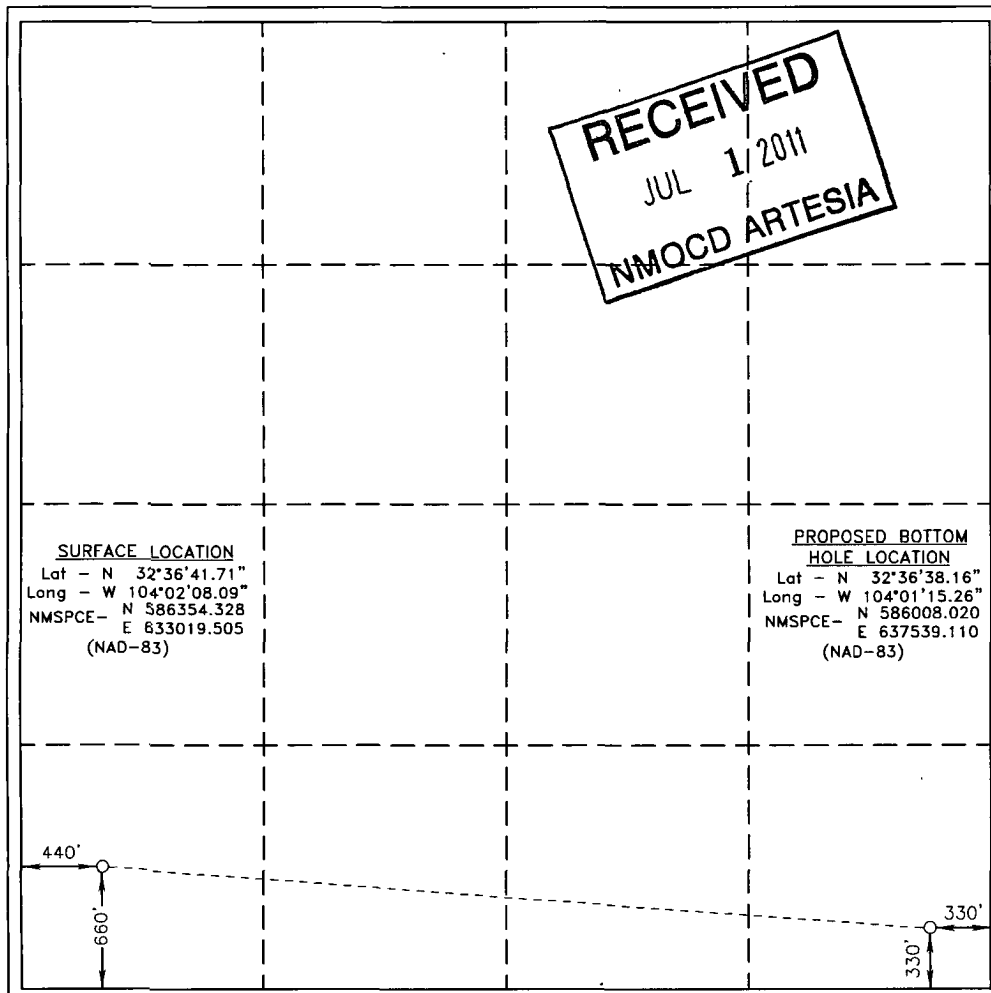
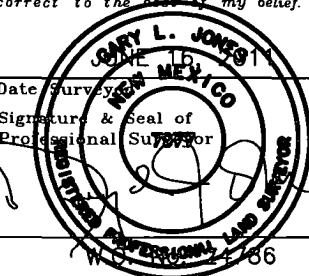
UL or lot No.	Section	Township	Range	Lot Idn	Feet from the	North/South line	Feet from the	East/West line	County
M	36	19 S	29 E		660	SOUTH	440	WEST	EDDY

Bottom Hole Location If Different From Surface

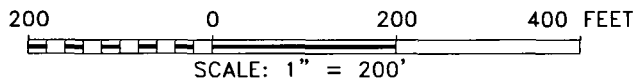
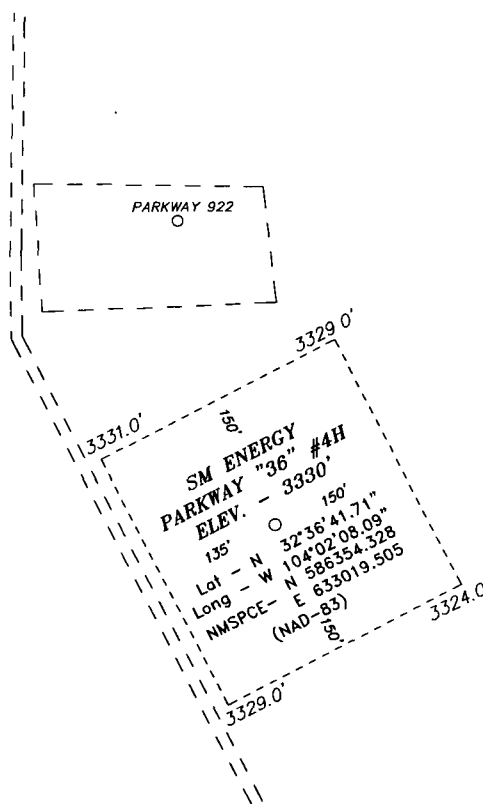
UL or lot No.	Section	Township	Range	Lot Idn	Feet from the	North/South line	Feet from the	East/West line	County
P	36	19 S	29 E		330	SOUTH	330	EAST	EDDY

Dedicated Acres 160	Joint or Infill	Consolidation Code	Order No.
-------------------------------	-----------------	--------------------	-----------

NO ALLOWABLE WILL BE ASSIGNED TO THIS COMPLETION UNTIL ALL INTERESTS HAVE BEEN CONSOLIDATED
OR A NON-STANDARD UNIT HAS BEEN APPROVED BY THE DIVISION

<div><p>RECEIVED JUL 1/2011 NMQCD ARTESIA</p></div> <div><p>SURFACE LOCATION Lat - N 32°36'41.71" Long - W 104°02'08.09" NMSPCE- N 586354.328 E 633019.505 (NAD-83)</p></div> <div><p>PROPOSED BOTTOM HOLE LOCATION Lat - N 32°36'38.16" Long - W 104°01'15.26" NMSPCE- N 586008.020 E 637539.110 (NAD-83)</p></div> <div></div>	<div><p>OPERATOR CERTIFICATION I hereby certify that the information contained herein is true and complete to the best of my knowledge and belief, and that this organization either owns a working interest or unleased mineral interest in the land including the proposed bottom hole location or has a right to drill this well at this location pursuant to a contract with an owner of such a mineral or working interest, or to a voluntary pooling agreement or a compulsory pooling order heretofore entered by the division.</p><p><i>Malcolm Kintzing</i> 6/29/11 Signature Date</p><p><i>Malcolm Kintzing</i> Printed Name</p><p><i>MKintzing@sm-energy.com</i> Email Address</p></div> <div><p>SURVEYOR CERTIFICATION I hereby certify that the well location shown on this plat was plotted from field notes of actual surveys made by me or under my supervision and that the same is true and correct to the best of my belief.</p><div></div><p>Date Surveyed Signature & Seal of Professional Surveyor</p><p>Certificate No. Gary L. Jones 7977 BASIN SURVEYS 24786</p></div>
---	--

SECTION 36, TOWNSHIP 19 SOUTH, RANGE 29 EAST, N.M.P.M.,
EDDY COUNTY, NEW MEXICO.



Directions to Location:

FROM THE JUNCTION OF HWY 360 AND CURRY COMB, GO WEST ON CURRY COMB FOR ±5.2 MILES TO LEASE ROAD, ON LEASE ROAD GO SOUTHERLY 1.3 MILES TO LEASE ROAD, ON LEASE ROAD FOR 0.3 MILES TO LEASE ROAD ON LEASE ROAD TO SOUTH 0.2 MILES TO WELL PAD AND PROPOSED LOCATION.

BASIN SURVEYS P.O. BOX 1786 - HOBBS, NEW MEXICO

W.O. Number 24786 Drawn By: J. SMALL

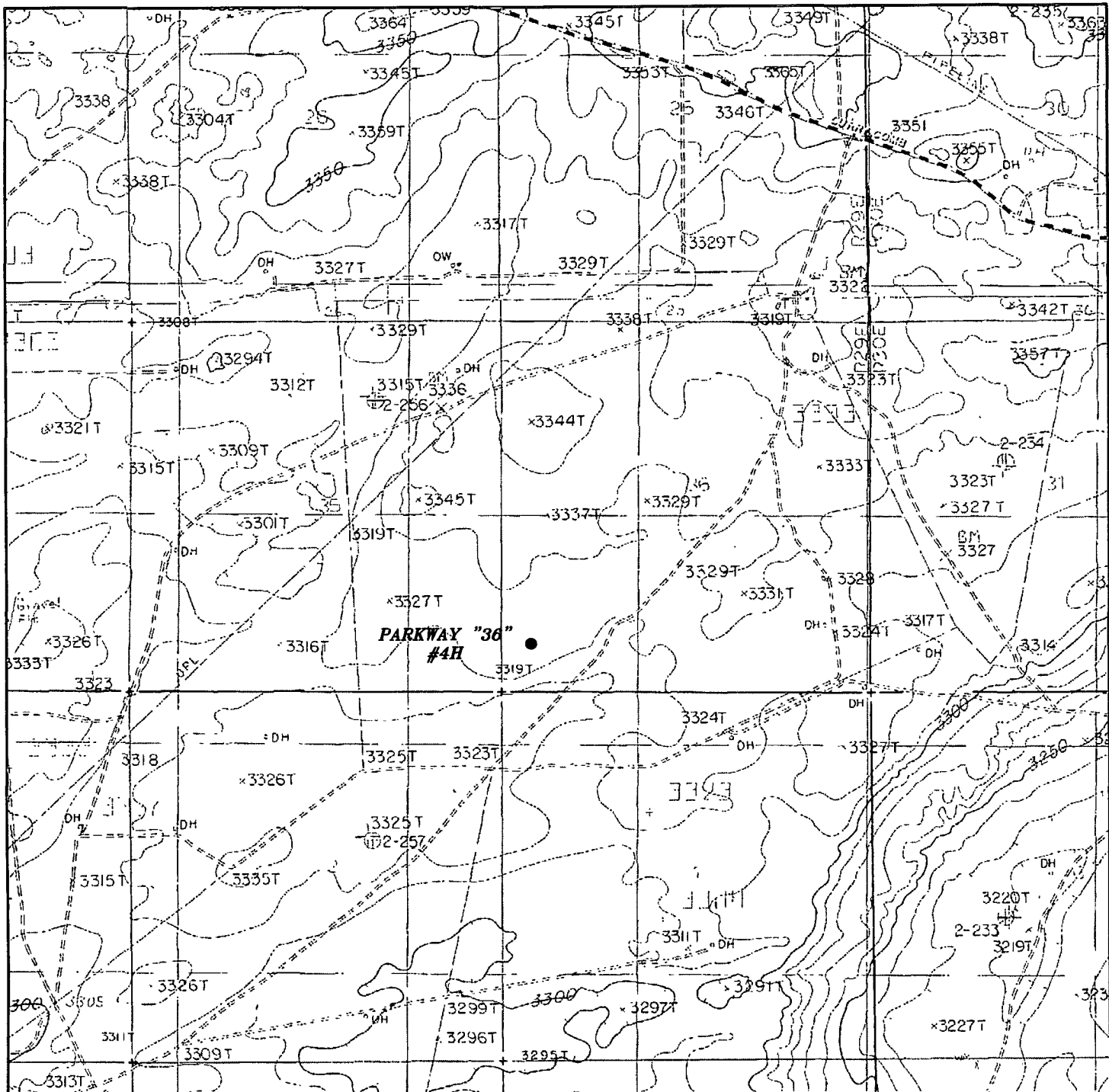
Date: 02-27-2009 Disk: JMS 24786

SM ENERGY

REF. PARKWAY "36" #4H / WELL PAD TOPO

THE PARKWAY "36" #4H LOCATED 660'
FROM THE SOUTH LINE AND 440' FROM THE WEST LINE OF
SECTION 36, TOWNSHIP 19 SOUTH, RANGE 29 EAST,
N.M.P.M., EDDY COUNTY, NEW MEXICO.

Survey Date 06-16-2011 Sheet 1 of 1 Sheets



PARKWAY "36" #4H

Located 660' FSL and 440' FWL

Section 36, Township 19 South, Range 29 East,
N.M.P.M., Eddy County, New Mexico.

basin
surveys
focused on excellence
in the oilfield

P.O. Box 1786
1120 N. West County Rd.
Hobbs, New Mexico 88241
(575) 393-7316 - Office
(575) 392-2206 - Fax
basinsurveys.com

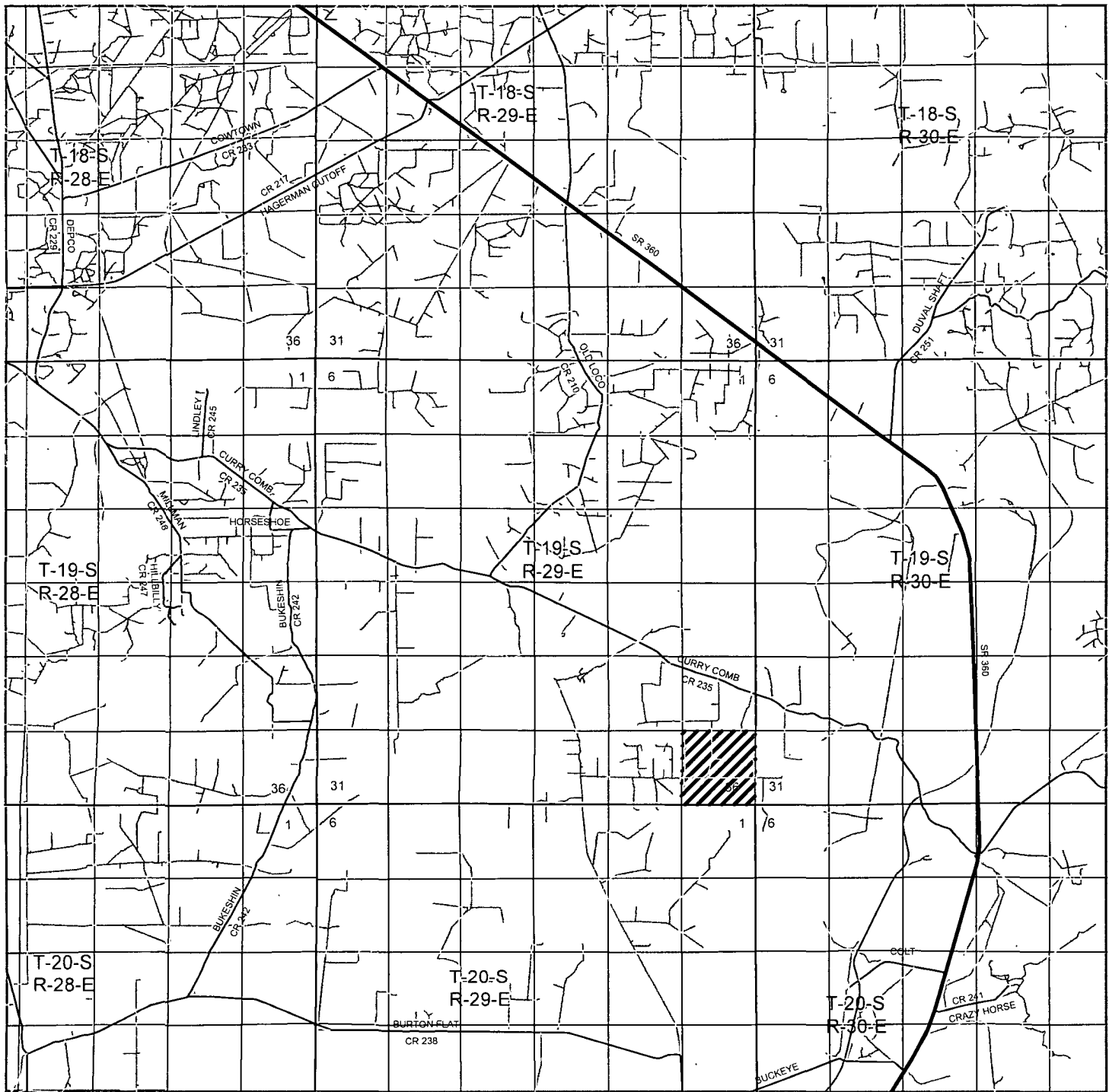
W.O. Number: JMS 24786

Survey Date: 06-16-2011

Scale: 1" = 2000'

Date: 06-22-2011

SM ENERGY



PARKWAY "36" #4H

Located 660' FSL and 440' FWL

Section 36, Township 19 South, Range 29 East,
N.M.P.M., Eddy County, New Mexico.

basin
surveys
focused on excellence
in the oilfield

P.O. Box 1786
1120 N. West County Rd.
Hobbs, New Mexico 88241
(575) 393-7316 - Office
(575) 392-2206 - Fax
basinsurveys.com

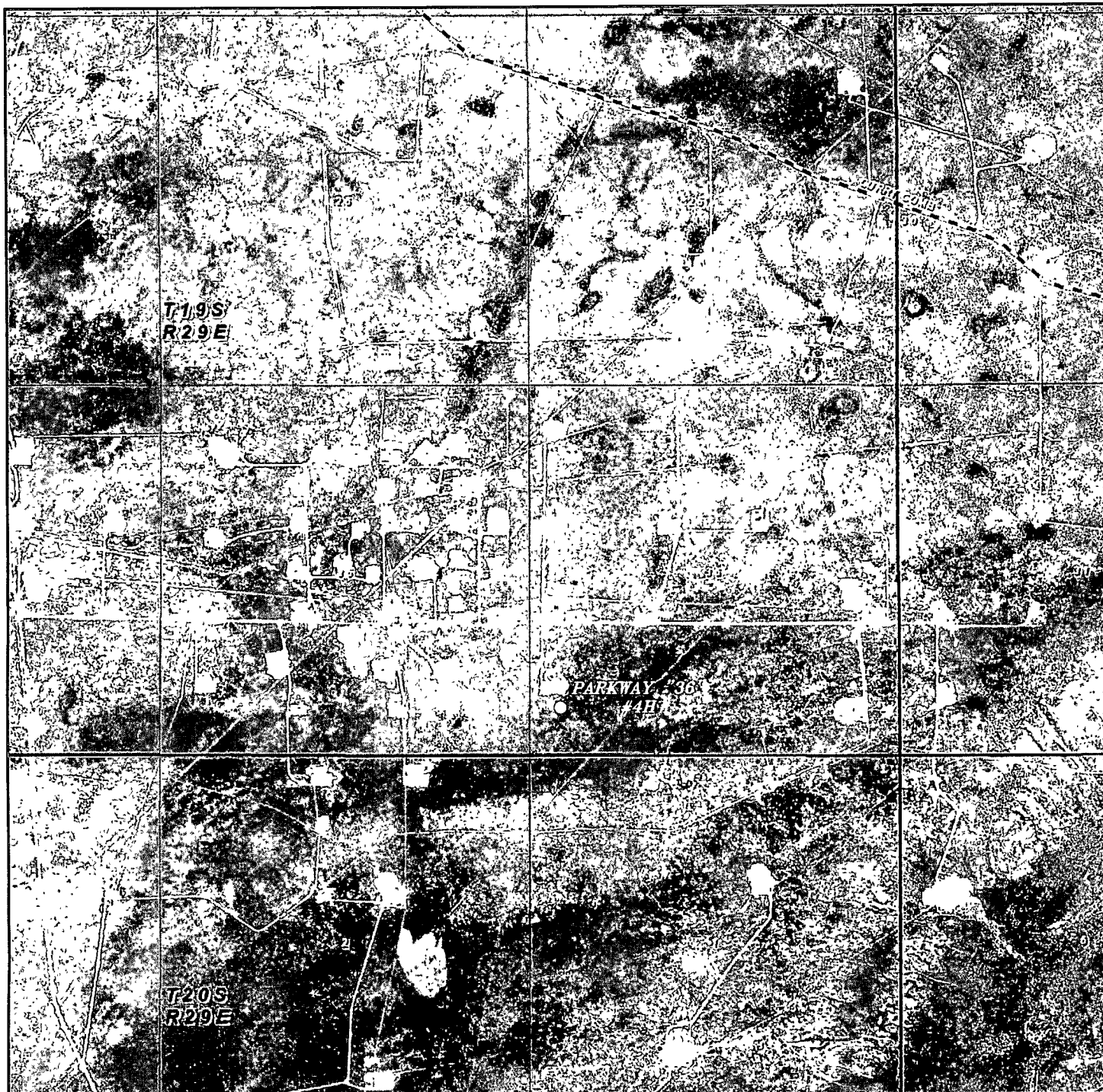
W.O. Number: JMS 24786

Survey Date: 06-16-2011

Scale: 1" = 2 Miles

Date: 06-22-2011

SM ENERGY



PARKWAY "36" #4H
 Located 660' FSL and 440' FWL
 Section 36, Township 19 South, Range 29 East,
 N.M.P.M., Eddy County, New Mexico.

basin
surveys
 focused on excellence
 in the oilfield

P.O. Box 1786
 1120 N. West County Rd.
 Hobbs, New Mexico 88241
 (575) 393-7316 - Office
 (575) 392-2206 - Fax
 basinsurveys.com

W.O. Number: JMS 24786

Scale: 1" = 2000'

YELLOW TINT - USA LAND
 BLUE TINT - STATE LAND
 NATURAL COLOR - FEE LAND



SM ENERGY