

HOBBS OCD

District I

1625 N. French Dr., Hobbs, NM 88240

District II

1301 W. Grand Avenue, Artesia, NM 88210

District III

1000 Rio Brazos Rd., Aztec, NM 87410

District IV

1220 S. St. Francis Dr., Santa Fe, NM 87505

State of New Mexico

Energy, Minerals & Natural Resources Department

OIL CONSERVATION DIVISION

1220 South St. Francis Dr.

Santa Fe, NM 87505

Form C-102

Revised October 15, 2009

Submit one copy to appropriate
District Office☐ AMENDED REPORT

WELL LOCATION AND ACREAGE DEDICATION PLAT

API Number 30-015-39328		Pool Code 49622	Pool Name Parkway SCANLON DRAW; BONE SPRING
Property Code 38555	Property Name CORAL PWU "28"		Well Number 4H
OGRID No. 6137	Operator Name DEVON ENERGY PRODUCTION COMPANY, L.P.		Elevation 3302.0

10 Surface Location

UL or lot no.	Section	Township	Range	Lot Idn	Feet from the	North/South line	Feet from the	East/West line	County
P	28	19 S	29 E		330	SOUTH	990	EAST	EDDY

11 Bottom Hole Location If Different From Surface

UL or lot no.	Section	Township	Range	Lot Idn	Feet from the	North/South line	Feet from the	East/West line	County
A	28	19 S	29 E		330	NORTH	990	EAST	EDDY

12 Dedicated Acres	13 Joint or Infill	14 Consolidation Code	15 Order No.
160			

No allowable will be assigned to this completion until all interests have been consolidated or a non-standard unit has been approved by the division.

NW CORNER SEC. 28 LAT. = 32.639070° LONG. = 104.088392° NMSP EAST (FT) N = 596310.65 E = 616734.00	BOTTOM OF HOLE LAT. = 32.638129° LONG. = 104.074467° NMSP EAST (FT) N = 595978.63 E = 621022.40	NE CORNER SEC. 28 LAT. = 32.639037° LONG. = 104.071246° NMSP EAST (FT) N = 596311.23 E = 622013.28	17 OPERATOR CERTIFICATION I hereby certify that the information contained herein is true and complete to the best of my knowledge and belief and that this organization either owns a working interest or unleased mineral interest in the land including the proposed bottom hole location or has a right to drill this well at this location pursuant to a contract with an owner of such a mineral or working interest, or to a voluntary pooling agreement or a compulsory pooling order heretofore entered by the division. Signature: <i>[Signature]</i> Date: <i>08/17/2011</i> Printed Name: STEPHANIE A. YSASAGA
SW CORNER SEC. 28 LAT. = 32.624547° LONG. = 104.088419° NMSP EAST (FT) N = 591025.80 E = 616737.99	CORAL PWU "28" #4H ELEV. = 3302.0' LAT. = 32.6253952° (NAD83) LONG. = 104.0745216° NMSP EAST (FT) N = 591344.61 E = 621016.91	SE CORNER SEC. 28 LAT. = 32.624474° LONG. = 104.0713092° NMSP EAST (FT) N = 591012.00 E = 622007.00	18 SURVEYOR CERTIFICATION I hereby certify that the well location shown on this plat was plotted from field notes of original surveys made by me or under my supervision and that the same is true and correct to the best of my belief. Date of Survey: <i>08/17/2011</i> Signature and Seal of Professional Surveyor: <i>[Signature]</i> Certificate Number: FILMONT JARAMILLO, PLS 12797 SURVEY NO. 508

PENETRATION POINT: 330' FSL & 990' FEL

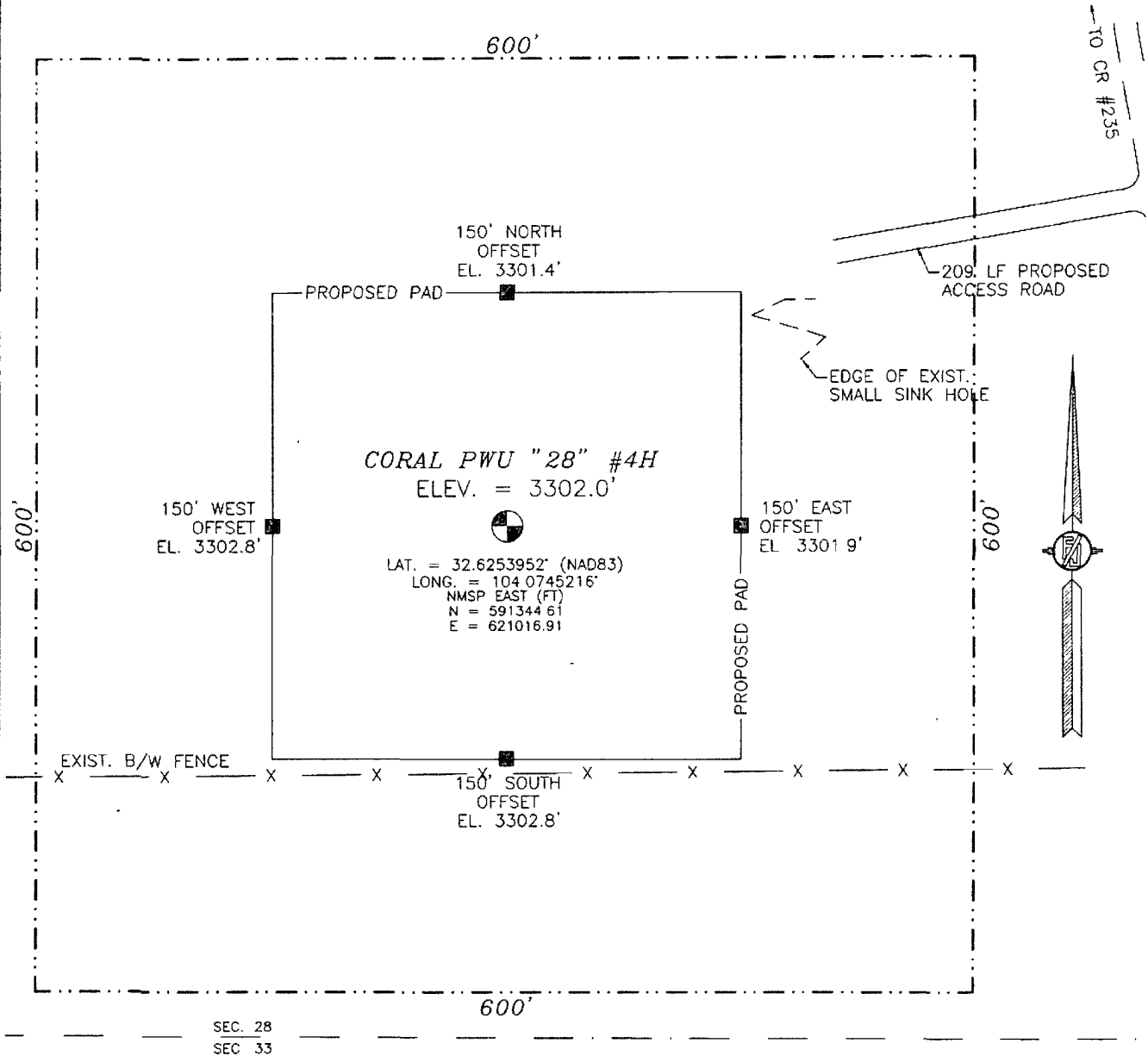


PRODUCING AREA



PROJECT AREA

SECTION 28, TOWNSHIP 19 SOUTH, RANGE 29 EAST, N.M.P.M.
EDDY COUNTY, STATE OF NEW MEXICO



010 50 100 200
SCALE 1" = 100'

DIRECTIONS TO LOCATION:

FROM CR #235 (CURRY COMB) AND CR #210 (OLD LOCO) GO SOUTHEAST ON CR #235 0.25 MILES, TURN RIGHT AND GO SOUTH 1.0 MILE BEND RIGHT AND GO WEST 0.2 MILES TURN LEFT AND GO SOUTH 1.1 MILES TO PROPOSED ROAD SURVEY AND FOLLOW FLAGS WEST-SOUTHWEST 209' TO THE NORTHEAST CORNER OF PROPOSED PAD FOR THIS LOCATION

DEVON ENERGY PRODUCTION COMPANY, L.P.

CORAL PWU "28" #4H

LOCATED 330 FT. FROM THE SOUTH LINE
AND 990 FT. FROM THE EAST LINE OF

SECTION 28, TOWNSHIP 19 SOUTH,
RANGE 29 EAST, N.M.P.M.

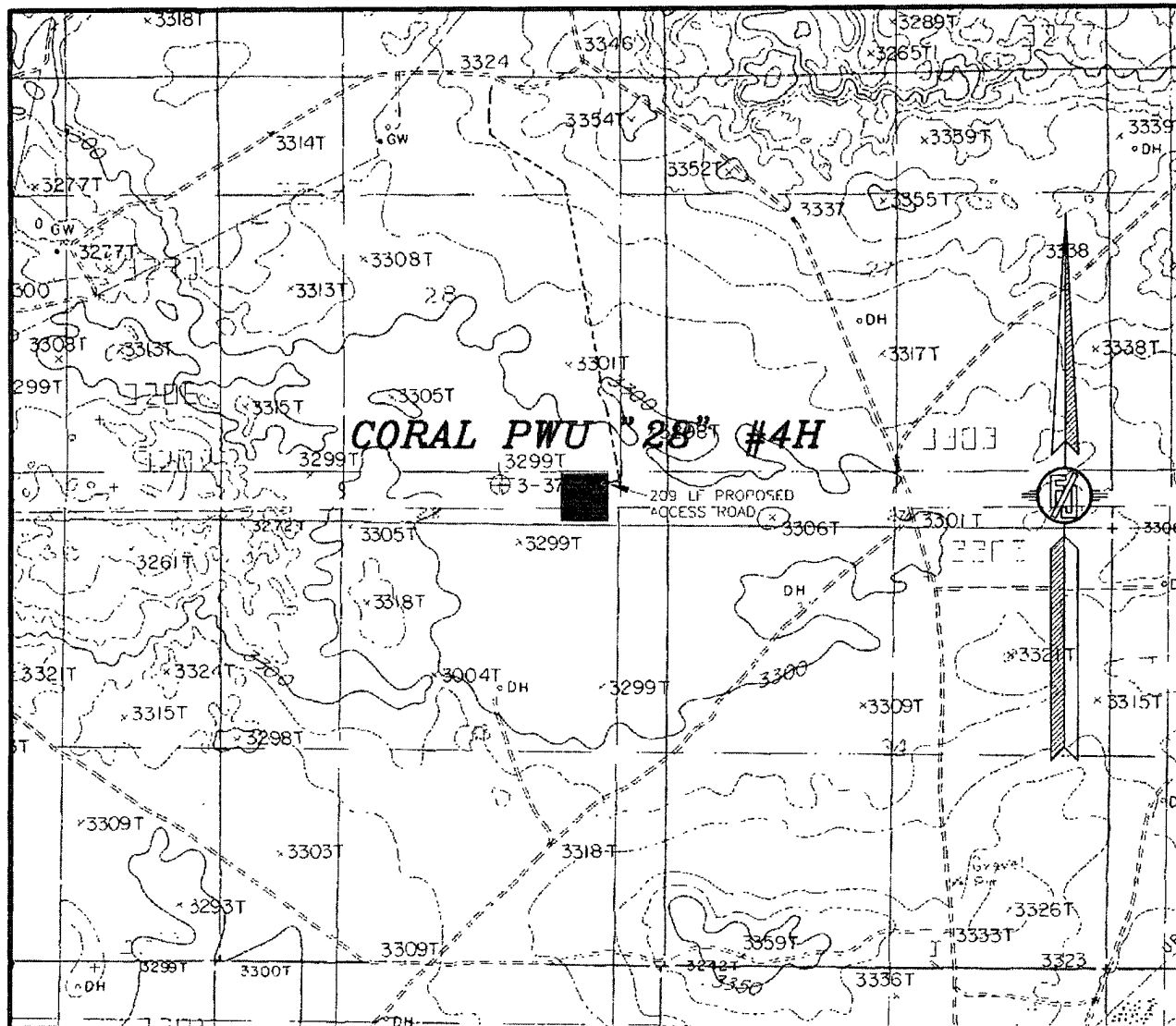
EDDY COUNTY, STATE OF NEW MEXICO

SURVEY NO. 508

JULY 5, 2011

MADRON SURVEYING, INC. 30 SOUTH CHUAL CARLSBAD, NEW MEXICO
(505) 706-4672

28, TOWNSHIP 19 SOUTH, RANGE 29 EAST, N.M.P.M.
EDDY COUNTY, STATE OF NEW MEXICO
LOCATION VERIFICATION MAP



CONTOUR INTERVAL:
ILLINOIS CAMP NE, NM
ILLINOIS CAMP SE, NM

NOT TO SCALE

DEVON ENERGY PRODUCTION COMPANY, L.P.

CORAL PWU "28" #4H

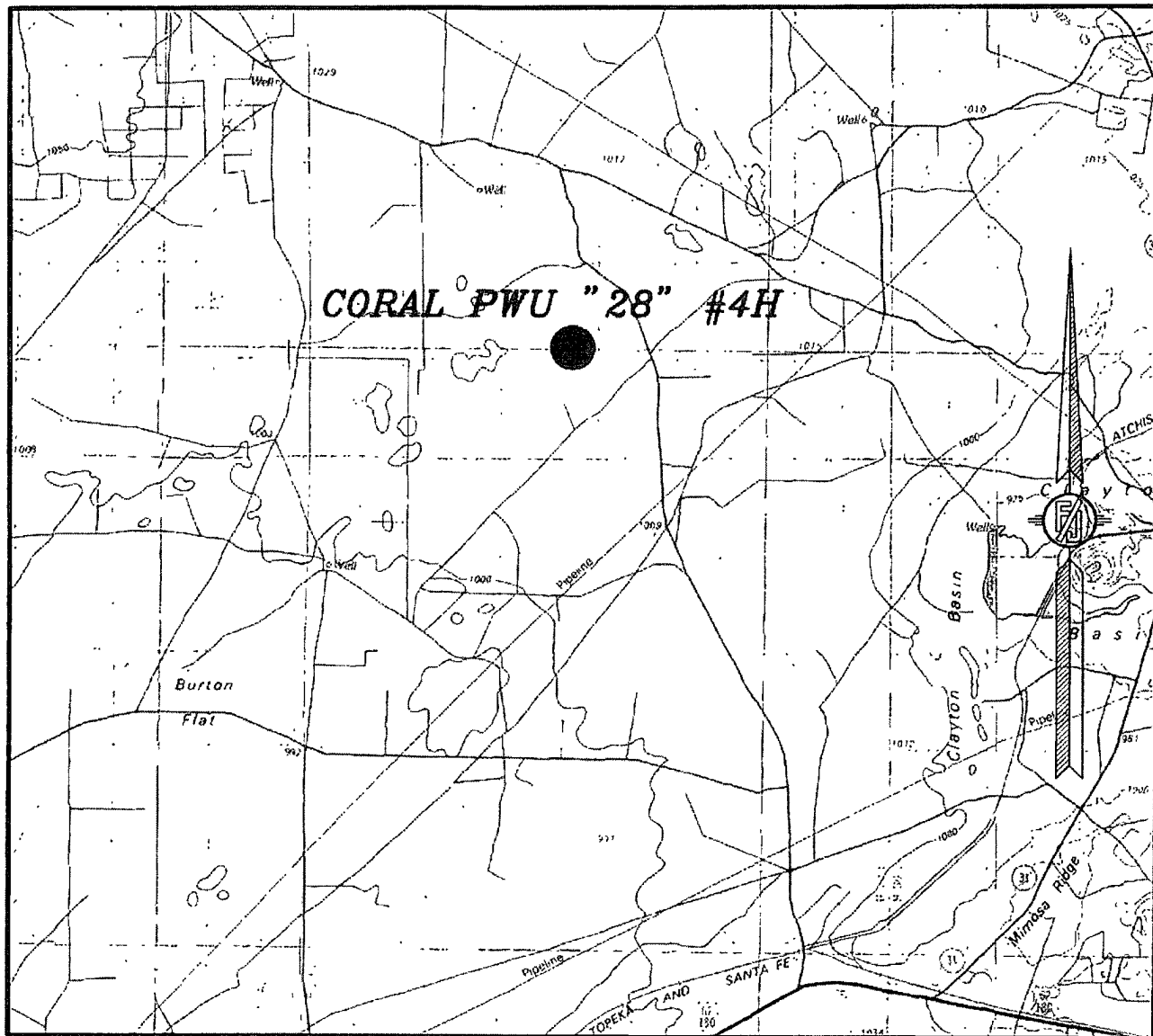
LOCATED 330 FT. FROM THE SOUTH LINE
AND 990 FT. FROM THE EAST LINE OF
SECTION 28, TOWNSHIP 19 SOUTH,
RANGE 29 EAST, N.M.P.M.
EDDY COUNTY, STATE OF NEW MEXICO

JULY 5, 2011

SURVEY NO. 508

MADRON SURVEYING, INC. 301 SOUTH CANAL
(505) 706-9672 CARLSBAD, NEW MEXICO

SECTION 28, TOWNSHIP 19 SOUTH, RANGE 29 EAST, N.M.P.M.
EDDY COUNTY, STATE OF NEW MEXICO
VICINITY MAP



DEVON ENERGY PRODUCTION COMPANY, L.P.

CORAL PWU "28" #4H

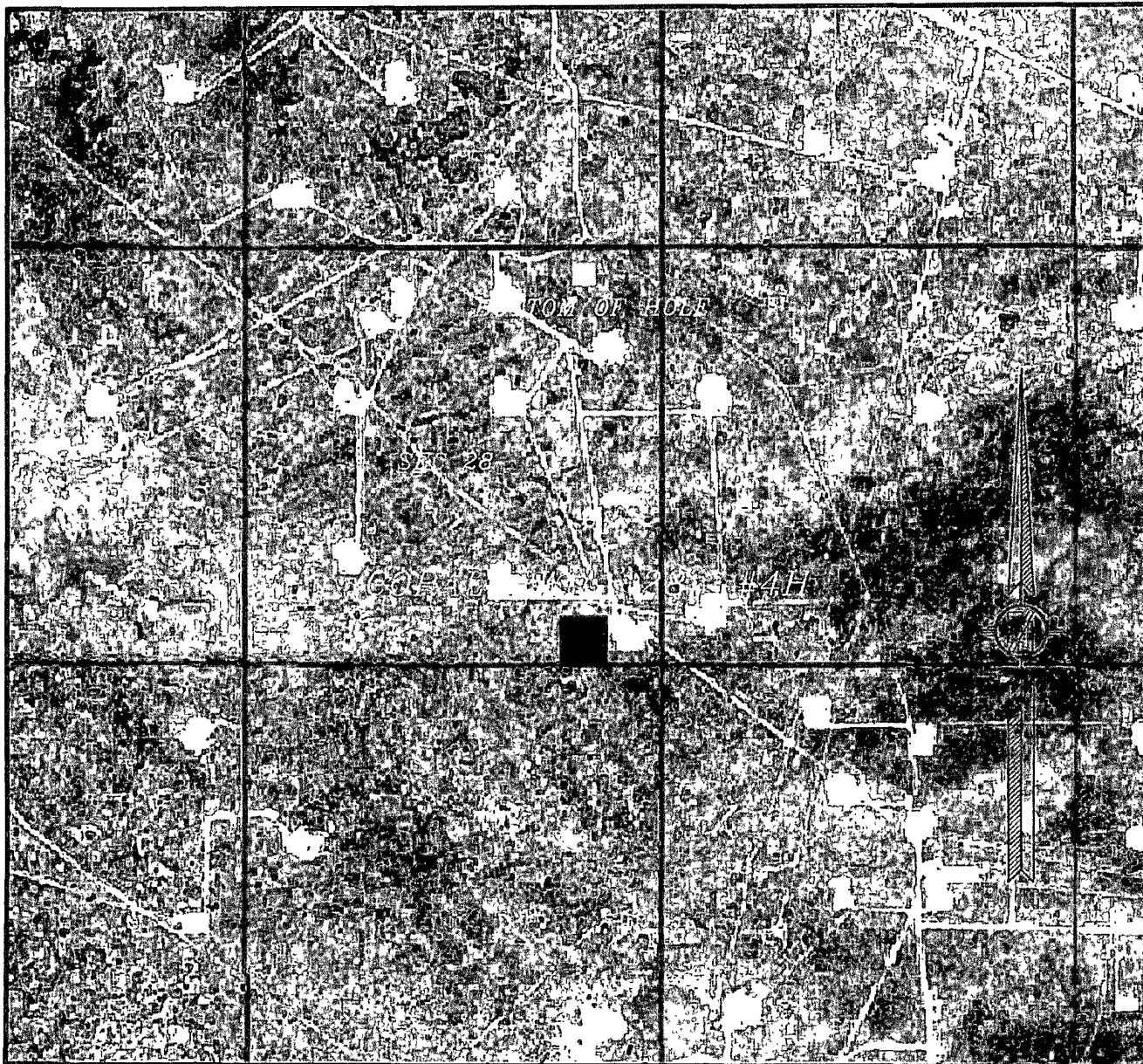
LOCATED 330 FT. FROM THE SOUTH LINE
AND 990 FT. FROM THE EAST LINE OF
SECTION 28, TOWNSHIP 19 SOUTH,
RANGE 29 EAST, N.M.P.M.
EDDY COUNTY, STATE OF NEW MEXICO

JULY 5, 2011

SURVEY NO. 508

MADRON SURVEYING, INC. 301 SOUTH CANAL CARLSBAD, NEW MEXICO
(575) 706-9672

SECTION 28, TOWNSHIP 19 SOUTH, RANGE 29 EAST, N.M.P.M.
EDDY COUNTY, STATE OF NEW MEXICO
AERIAL PHOTO



NOT TO SCALE
AERIAL PHOTO:
GOOGLE EARTH
USDA-AUG, 2009

DEVON ENERGY PRODUCTION COMPANY, L.P.

CORAL PWU "28" #4H

LOCATED 330 FT. FROM THE SOUTH LINE
AND 990 FT. FROM THE EAST LINE OF
SECTION 28, TOWNSHIP 19 SOUTH,
RANGE 29 EAST, N.M.P.M.
EDDY COUNTY, STATE OF NEW MEXICO

SURVEY NO. 508

JULY 5, 2011

MADRON SURVEYING, INC. 301 SOUTH CANAL CARLSBAD, NEW MEXICO
(575) 706-9672

SECTION LAND PLAT

County of Eddy State of New Mexico

Section 28 Township 19 S Range 29 E

CORAL PWU 28 4 H
SHL: 330' FSL, 990' FEL
BHL: 330' FNL, 990' FEL

