

District I  
1625 N. French Dr., Hobbs, NM 88240  
Phone: (575) 393-6161 Fax: (575) 393-0720  
District II  
811 S. First St., Artesia, NM 88210  
Phone: (575) 748-1283 Fax: (575) 334-6170  
District III  
1000 Rio Brazos Road, Aztec, NM 87410  
Phone: (505) 334-6178 Fax: (505) 334-6170  
District IV  
1220 S. St. Francis Dr., Santa Fe, NM 87505  
Phone: (505) 476-3460 Fax: (505) 476-3462

State of New Mexico  
Energy, Minerals & Natural Resources Department  
OIL CONSERVATION DIVISION  
1220 South St. Francis Dr.  
Santa Fe, NM 87505

OCD – REC'D 9/15/2020

Form C-102  
Revised August 1, 2011  
Submit one copy to appropriate  
District Office  
☒ AMENDED REPORT  
As Drilled

WELL LOCATION AND ACREAGE DEDICATION PLAT

1 API Number 30-015-46598	2 Pool Code 30216	3 Pool Name Hay Hollow; Bone Spring, North
4 Property Code 325001	5 Property Name DAISY 24 STATE COM	6 Well Number 506H
7 OGRID No. 229137	8 Operator Name COG OPERATING LLC	9 Elevation 3088'

" Surface Location

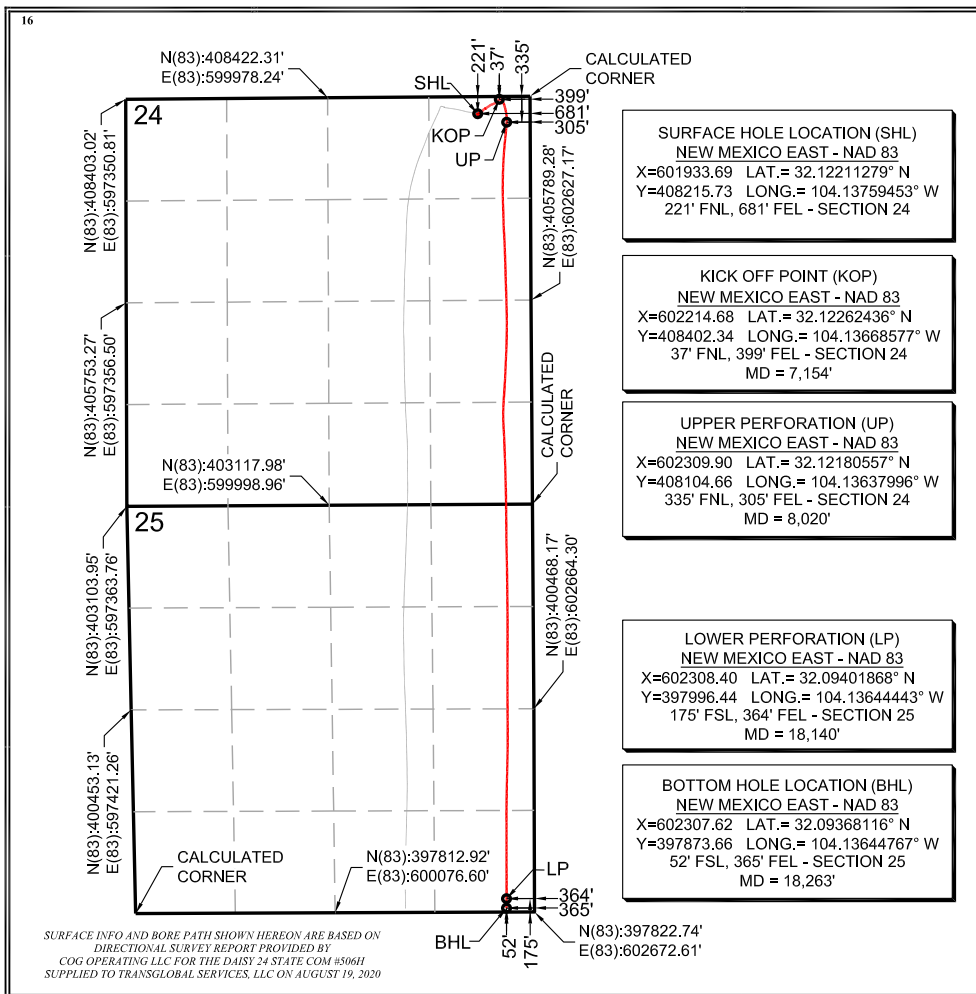
UL or lot no.	Section	Township	Range	Lot Idn	Feet from the	North/South line	Feet from the	East/West line	County
A	24	25-S	27-E		221'	NORTH	681'	EAST	EDDY

" Bottom Hole Location If Different From Surface

UL or lot no.	Section	Township	Range	Lot Idn	Feet from the	North/South line	Feet from the	East/West line	County
P	25	25-S	27-E		52'	SOUTH	365'	EAST	EDDY

12 Dedicated Acres 320	13 Joint or Infill	14 Consolidation Code	15 Order No.
---------------------------	--------------------	-----------------------	--------------

No allowable will be assigned to this completion until all interests have been consolidated or a non-standard unit has been approved by the division.



17 OPERATOR CERTIFICATION

I hereby certify that the information contained herein is true and complete to the best of my knowledge and belief, and that this organization either owns a working interest or unleased mineral interest in the land including the proposed bottom hole location or has a right to drill this well at this location pursuant to a contract with an owner of such a mineral or working interest, or to a voluntary pooling agreement or a compulsory pooling order heretofore entered by the division.

9/2/20  
Signature Date  
Amanda Avery  
Printed Name  
aavery@concho.com  
E-mail Address

18 SURVEYOR CERTIFICATION

I hereby certify that the well location shown on this plat was plotted from field notes of actual surveys made by me or under my supervision, and that the same is true and correct to the best of my belief.

Date of Survey  
Signature and Seal of Professional Surveyor  
Garrett J. Smelker  
25036  
08/21/2020  
Certificate Number