

State of New Mexico
Energy, Minerals and Natural Resources Department

Michelle Lujan Grisham
Governor

Sarah Cottrell Propst
Cabinet Secretary

Todd E. Leahy, JD, PhD
Deputy Cabinet Secretary

Adrienne E. Sandoval, Director
Oil Conservation Division



July 16, 2020

Ms. Kaitlyn A. Luck
kaluck@hollandhart.com

NON-STANDARD LOCATION

Administrative Order NSL-8045

Tap Rock Operating, LLC [OGRID 372043]
WTG Federal Com Well No. 202H
API No. 30-015-PENDING

Proposed Location

	<u>Footages</u>	<u>Unit/Lot</u>	<u>Sec.</u>	<u>Twsp</u>	<u>Range</u>	<u>County</u>
Surface	285 FNL & 2000 FWL	C	27	26S	29E	Eddy
First Take Point	330 FNL & 1920 FWL	C	27	26S	29E	Eddy
Last Take Point	100 FSL & 1920 FWL	10	34	26S	29E	Eddy
Terminus	30 FSL & 1920 FWL	10	34	26S	29E	Eddy

Proposed Horizontal Gas Units

<u>Description</u>	<u>Acres</u>	<u>Pool</u>	<u>Pool Code</u>
W/2 of Section 27	457.78	Purple Sage; Wolfcamp (GAS)	98220
W/2 of Section 34			

Reference is made to your application received on July 13, 2020.

You have requested to complete this horizontal well as a gas well described above in the referenced pool or formation. This well is governed by special rules for the Purple Sage; Wolfcamp (Gas) Pool of and provides for 320-acre units, with wells located at least 330 feet from a unit outer boundary.

This well's completed interval is as close as 100 feet to the southern edge of the horizontal spacing unit. The encroachment infringes toward the exterior state boundary line, which is not concerning of the correlative rights of all interested parties for this unorthodox location.

The Division understands you have given notice of this application to all operators or owners who are "affected persons," as defined in Paragraph (8) Subsection A of 19.15.2.7 NMAC, in all adjoining units towards which the proposed location encroaches. Public notice is not required as all affected parties are located exterior to the State's jurisdiction.

Division understands you are seeking this unorthodox location in order to optimize well spacing and thereby preventing waste within the Wolfcamp formation underlying the W/2 of Section 27 and the W/2 of irregular Section 34.

Your application has been filed under 19.15.16.15(C)(6) NMAC, 19.15.15.13 NMAC and 19.15.4.12 (A)(2) NMAC.

Per Subsection B of 19.15.15.13 NMAC, **Division approves this unorthodox location.**

The above approvals are subject to your following all other applicable Division rules.

Jurisdiction of this case is retained for the entry of further orders as Division deems necessary.



ADRIENNE E. SANDOVAL
Division Director

AES/lrl

cc: Oil Conservation Division – Artesia District Office
State Land Office – Oil, Gas, and Mineral Division
Bureau of Land Management – Carlsbad Field Office

District I
1625 N. French Dr., Hobbs, NM 88240
Phone: (575) 393-6161 Fax: (575) 393-0720
District II
811 S. First St., Artesia, NM 88210
Phone: (575) 748-1283 Fax: (575) 748-9720
District III
1000 Rio Brazos Road, Aztec, NM 87410
Phone: (505) 334-6178 Fax: (505) 334-6170
District IV
1220 S. St. Francis Dr., Santa Fe, NM 87505
Phone: (505) 476-3460 Fax: (505) 476-3462

State of New Mexico
Energy, Minerals & Natural Resources
Department
OIL CONSERVATION DIVISION
1220 South St. Francis Dr.
Santa Fe, NM 87505

FORM C-102

Revised August 1, 2011

Submit one copy to appropriate

District Office

☐ AMENDED REPORT
AS-DRILLED

WELL LOCATION AND ACREAGE DEDICATION PLAT

¹ API Number 30-015-47029		² Pool Code 98220		³ Pool Name PURPLE SAGE; WOLFCAMP	
⁴ Property Code 326330		⁵ Property Name WTG FED COM			⁶ Well Number 202H
⁷ OGRID No. #372043		⁸ Operator Name TAP ROCK OPERATING, LLC.			⁹ Elevation 2885'

¹⁰Surface Location

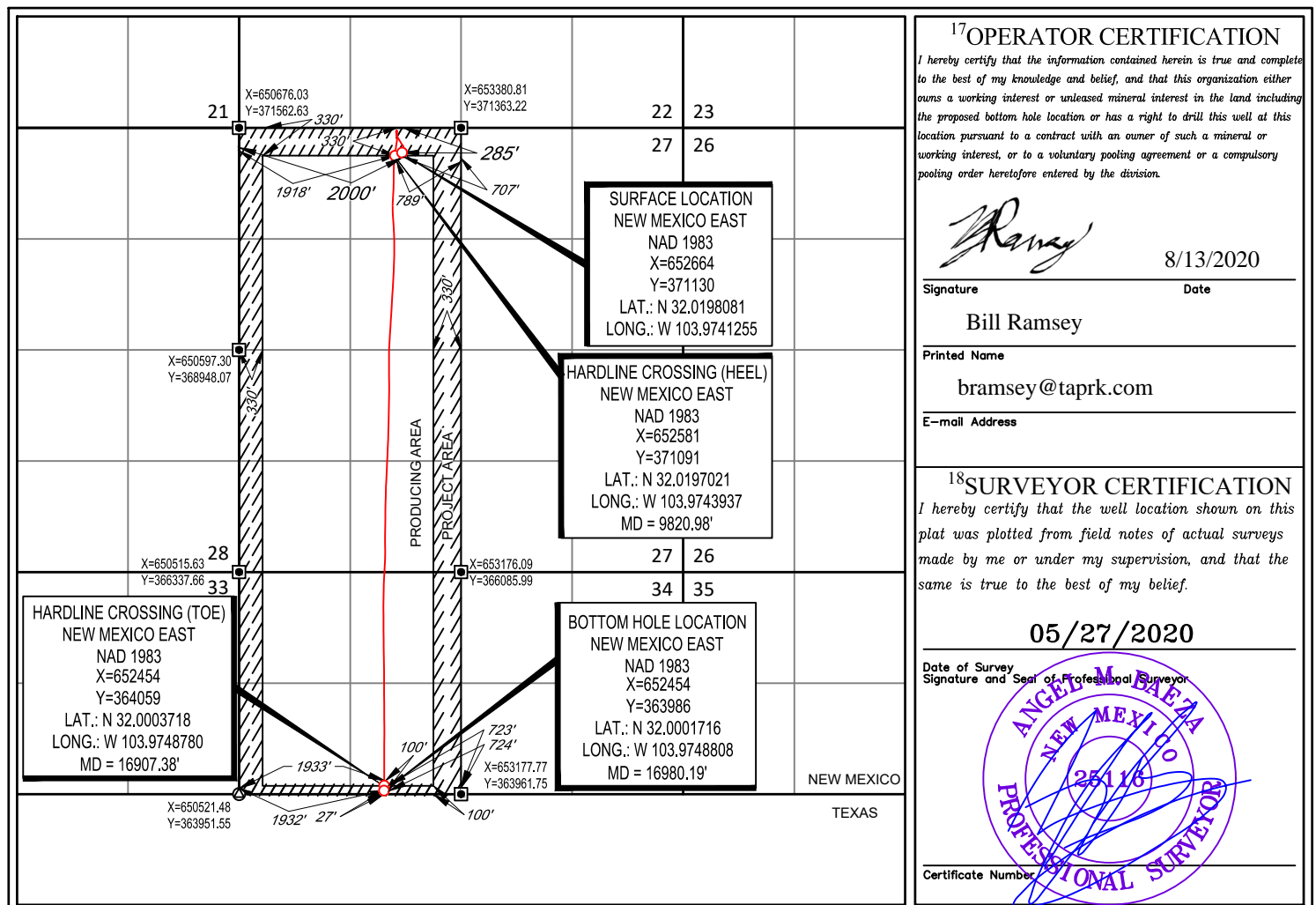
UL or lot no. C	Section 27	Township 26-S	Range 29-E	Lot Idn -	Feet from the 285'	North/South line NORTH	Feet from the 2000'	East/West line WEST	County EDDY
--------------------	---------------	------------------	---------------	--------------	-----------------------	---------------------------	------------------------	------------------------	----------------

¹¹Bottom Hole Location If Different From Surface

UL or lot no. 10	Section 34	Township 26-S	Range 29-E	Lot Idn -	Feet from the 27'	North/South line SOUTH	Feet from the 1932'	East/West line WEST	County EDDY
---------------------	---------------	------------------	---------------	--------------	----------------------	---------------------------	------------------------	------------------------	----------------

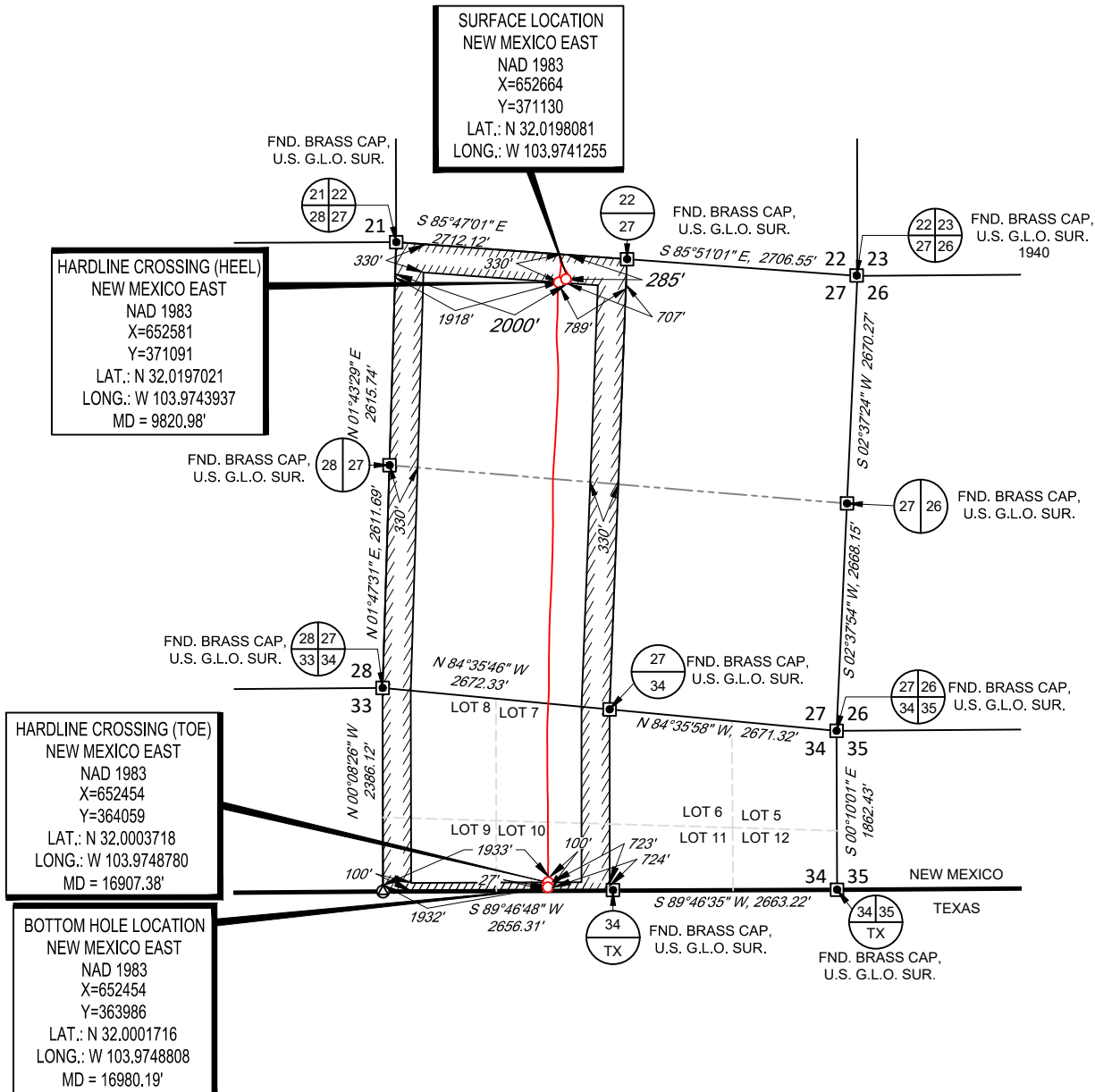
¹² Dedicated Acres	¹³ Joint or Infill	¹⁴ Consolidation Code	¹⁵ Order No.
-------------------------------	-------------------------------	----------------------------------	-------------------------

No allowable will be assigned to this completion until all interests have been consolidated or a non-standard unit has been approved by the division.



SCALE: 1" = 2000'
0' 1000' 2000'

SECTION 27, TOWNSHIP 26-S, RANGE 29-E, N.M.P.M.
EDDY COUNTY, NEW MEXICO



LEASE NAME & WELL NO.: WTG FED COM 202H
SECTION 27 TWP 26-S RGE 29-E SURVEY N.M.P.M.
COUNTY EDDY STATE NM ELEVATION 2885'
DESCRIPTION 285' FNL & 2000' FWL



TOPOGRAPHIC
LOYALTY INNOVATION LEGACY

1400 EVERMAN PARKWAY, Ste. 146 • FT. WORTH, TEXAS 76140
TELEPHONE: (817) 744-7512 • FAX (817) 744-7554
2903 NORTH BIG SPRING • MIDLAND, TEXAS 79705
TELEPHONE: (432) 682-1653 OR (800) 767-1653 • FAX (432) 682-1743
WWW.TOPOGRAPHIC.COM

INTERNAL
PRE-COMPLETION
PLAT

WTG FED COM 202H
PRE-COMPLETION

REVISION:

INT DATE

DATE: 07/29/2020

FILE: C_WTG_FED COM_202H

DRAWN BY: H.B.

SHEET: 1 OF 1

NOTES:

1. ORIGINAL DOCUMENT SIZE: 8.5" X 11"
2. ALL BEARINGS, DISTANCES, AND COORDINATE VALUES CONTAINED HEREIN ARE GRID BASED UPON THE NEW MEXICO COORDINATE SYSTEM OF 1983, EAST ZONE, U.S. SURVEY FEET.
3. THIS WELL LOCATION SHOWN HEREON HAS BEEN SURVEYED ON THE GROUND UNDER MY SUPERVISION AND PREPARED ACCORDING TO THE EVIDENCE FOUND AT THE TIME OF SURVEY, AND DATA PROVIDED BY TAP ROCK OPERATING, LLC. THIS CERTIFICATION IS MADE AND LIMITED TO THOSE PERSONS OR ENTITIES SHOWN ON THE FACE OF THIS PLAT AND IS NON-TRANSFERABLE. THIS SURVEY IS CERTIFIED FOR THIS TRANSACTION ONLY.