

District I
1625 N French Dr., Hobbs, NM 88240
District II
1301 W Grand Avenue, Artesia, NM 88210
District III
1000 Rio Brazos Road, Aztec, NM 87410
District IV
1220 S. St. Francis Dr., Santa Fe, NM 87505

State of New Mexico
Energy Minerals and Natural Resources

Form C-101
June 16, 2009

Oil Conservation Division
1220 South St. Francis Dr.
Santa Fe, NM 87505

Submit to appropriate District Office

☐ AMENDED REPORT

APPLICATION FOR PERMIT TO DRILL, RE-ENTER, DEEPEN,
PLUGBACK, OR ADD A ZONE

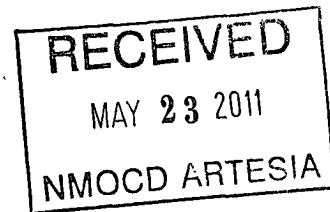
¹ Operator Name and Address BOPCO, L.P. PO Box 2760 Midland, TX 79702-2760		² OGRID Number 001801							
³ Phone: (432) -683-2277		³ API Number 30 - 015 - 29460							
⁴ Property Code 306402	⁵ Property Name Poker Lake Unit	⁶ Well No. 127							
⁷ Proposed Pool 1 Coral Canyon (Delaware), NE		⁸ Proposed Pool 2							
Surface Location									
⁹ UL or lot no. L	¹⁰ Section 2	¹¹ Township 25S	¹² Range 30E	¹³ Lot Idn	¹⁴ Feet from the 1980	¹⁵ North/South line South	¹⁶ Feet from the 660	¹⁷ East/West line West	¹⁸ County Eddy
¹⁹ Proposed Bottom Hole Location If Different From Surface									
²⁰ UL or lot no.	²¹ Section	²² Township	²³ Range	²⁴ Lot Idn	²⁵ Feet from the	²⁶ North/South line	²⁷ Feet from the	²⁸ East/West line	²⁹ County
Additional Well Information									
³⁰ Well Type Code N	³¹ Well Type Code 0	³² Cable/Rotary R	³³ Lease Type Code State	³⁴ Ground Level Elevation 3349'					
³⁵ Multiple N	³⁶ Proposed Depth 6100'	³⁷ Formation Delaware	³⁸ Contractor Lucky	³⁹ Spud Date 3/30/97					

²¹ Proposed Casing and Cement Program

Hole Size	Casing Size	Casing weight/foot	Setting Depth	Sacks of Cement	Estimated TOC
14-3/4"	11-3/4"	42#	947'	561	Surface
11"	8 5/8"	28# & 38#	3973'	1370	Surface
7-7/8"	5-1/2"	15 5/8#	6100'	770	Surface

²² Describe the proposed program. If this application is to DEEPEN or PLUG BACK, give the data on the present productive zone and proposed new productive zone. Describe the blowout prevention program, if any. Use additional sheets if necessary.

This well is outside the R-111 Potash area & outside the Secretaries Area.



²³ I hereby certify that the information given above is true and complete to the best of my knowledge and belief.		OIL CONSERVATION DIVISION	
Signature:		Approved by:	
Printed name: Carlos Cruz		Title:	
Title: Division Production Supt		Approval Date: 7/29/11	Expiration Date: 7/29/13
E-mail Address: ccruz@basspet.com			
Date: 5/24/11	Phone: (432) - 683 - 2277	Conditions of Approval Attached <input type="checkbox"/>	

- 7) MIRU reverse unit with power swivel. RIH with 4-3/4" bit and drill out cement to float collar to leave PBTD of 6010' +/- . Circulate hole clean with PW. Spot 2,000 gallons of 7-1/2% NEFE HCL acid across proposed perf interval; 5,628' to 5,648' and 5,766' to 5786'. POOH with bit.
- 8) MIRU Weatherford Wireline Services with 5k pack-off and kill truck with PW. RIH with GaugeRing/JunkBasket to PBTD. Correlate depth to Schlumberger LithoDensity Compensated Neutron Gamma Ray Log dated April 18, 1997.
- 9) RIH with 3-1/8" Titan slick guns (**Gun specs in table**) loaded with 1 spf 0" phasing and perforate from 5,766' to 5,786' (**20 holes**) and 5,628' to 5,648' (**20 holes**); perforate top down.

Part #	Explosive Size	EHD	TTP
EXP-3323-331	22.7g	.56"	26.26"

- 10) POOH with perforating guns, inspect guns to insure that all shots fired. RD Weatherford Wireline Services.
- 11) RU kill truck with PW and break down perforations (5,786' – 5,766' & 5,628' – 5,648'). Record ISIP, 5, 10, and 15 minute shut-in pressures. RD kill truck.
- 12) NU 5-1/2" frac valve. MI and set 7 frac tanks. Fill each frac tank with 480 bbls of produced water
- 13) MIRU BJ Services with frac equipment. Install hydraulic pop-off on treating line and set it to 3,200 psi
Note: If not using hydraulic pop-off set automatic shut-off on pump trucks to 3,200 psi.
- 14) Test frac lines to 4,000 psi. (**Note: Maximum surface treating pressure for frac job is 3,000 psi**).
- 15) Frac the Delaware down casing as follows, pumping Scandium tracer in the Pad and first three prop stages.

Stage	Fluid			Proppant			Rate
	Type	Volume (gal)	Conc. (ppa)	Type	Stage (lbs)	Cum (lbs)	BPM
1	Produced Water	15000		Pad			55
2	Produced Water	34000	0.05	100%LiteProp 125, 14/30	1700	1700	55
3	Produced Water	60000	0.1	100%LiteProp 125, 14/30	6000	7700	55
4	Produced Water	9500	0.2	100%LiteProp 125, 14/30	1900	9600	55
5	Produced Water	8000	0.3	100%LiteProp 125, 14/30	2400	12000	55
6	Produced Water	4403		Flush		12000	55
Total		132,903				12000	

- 16) **Note:** Flush to bottom perforation at 5,786'. SD and record ISIP, 5 min, 10 min, and 15 min shut-in pressures.
- 17) RD BJ Services, ND 5-1/2" frac valve and NU 3,000# dual manual BOP.
- 18) RU Renegade Wireline Services with 5k pack-off. RIH with Gamma Ray and Temperature tool and log from PBTD to 500' above top perf. RD Renegade.
- 19) Open well up flow back at 1 BPM for 1 hour then increase rate to 2 – 3 BPM until well is dead.
- 20) RU power Swivel and reverse unit. RIH with 4-3/4" bit on 2-7/8" workstring and drill out CIBP at 5,702'.

- 21) Clean well down to PBTD at 6,200'. POOH with 2-7/8" workstring and 4-3/4" bit.
- 22) RIH with Lokset Nickel plated Ext/Int PC pkr on 3-1/2" 9.3# L-80 tubing to 4,470 feet.
- 23) Reverse circulate 54 bbls of packer fluid around packer. Set packer and top fill additional packer fluid if necessary. Test to 500 psi for 30 minutes. Record test on chart. Notify Artesia NMOCD of intent to place well on injection. Have NMOCD witness MIT.
- 24) ND BOP and NU wellhead. Put well on injection observing a maximum pressure of 854 psi.

End of procedure.

Date: 3/15/2011

Submitted by: Martyn Robertson

Approved by:

CURRENT

LEASE: POKER LAKE UNIT WELL #: 127
 FIELD: POKER LAKE (DELAWARE)
 LOCATION: 1980' FSL & 660' FWL, SECTION 2, T25S, R30E
 COUNTY: EDDY ST: NN API: 30-015-29460

KB: 3333'
 GL: 3349
 SPUD DATE: 3/30/1997
 P&A DATE: 4/23/1997

SURFACE CASING

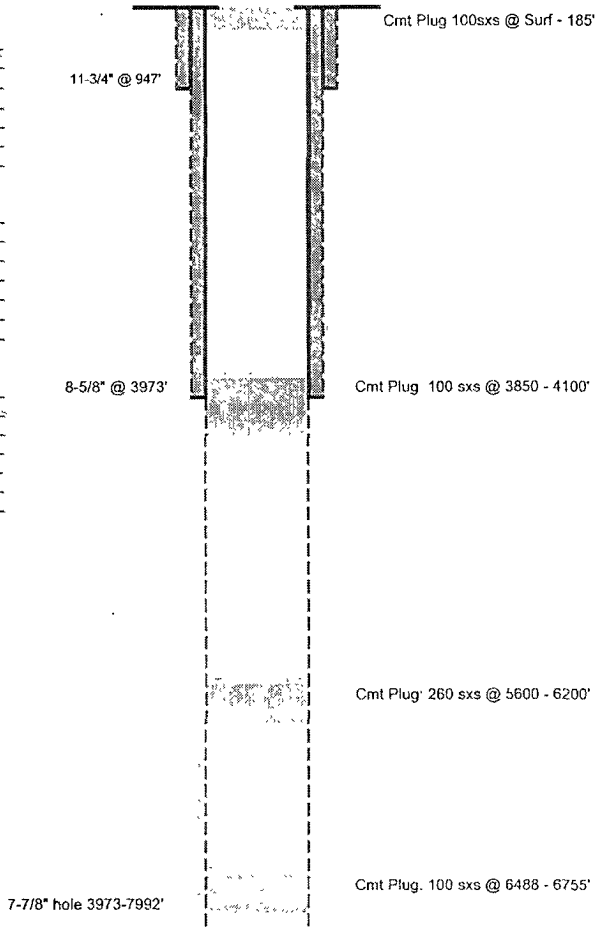
SIZE: 11-3/4"
 WT/GRD: 42# WC-40
 CSA: 947'
 SX: 561 C
 CIRC: Y
 TOC: SURF
 HOLE SIZE: 14-3/4" 0-949'

INTERMEDIATE CASING

SIZE: 8-5/8"
 WT/GRD: 32 & 28# WC-50 & K-55
 CSA: 3973'
 SX: 1370
 CIRC: Y
 TOC: SURF
 HOLE SIZE: 11" 947-3973'

PRODUCTION CASING

SIZE: _____
 WT/GRD: _____
 CSA: _____
 SX: _____
 CIRC: _____
 TOC: _____
 HOLE SIZE: 7-7/8" 3973-7992'



TD: 7992'

Updated: 4/12/2010
 Author: erm
 Engr: CCC

PROPOSED SWD

LEASE: POKER LAKE UNIT WELL #: 127
 FIELD: POKER LAKE (DELAWARE)
 LOCATION: 1980' FSL & 660' FWL, SECTION 2, T25S, R30E
 COUNTY: EDDY ST: NM API: 30-015-29460

KB: 3333'
 GL: 3349
 SPUD DATE: 3/30/1997
 P&A DATE: 4/23/1997

SURFACE CASING

SIZE: 11-3/4"
 WT/GRD: 42# WC-40
 CSA: 947'
 SX: 561 sxs Cl C
 CIRC: Y
 TOC: SURF
 HOLE SIZE: 14-3/4" 0-949'

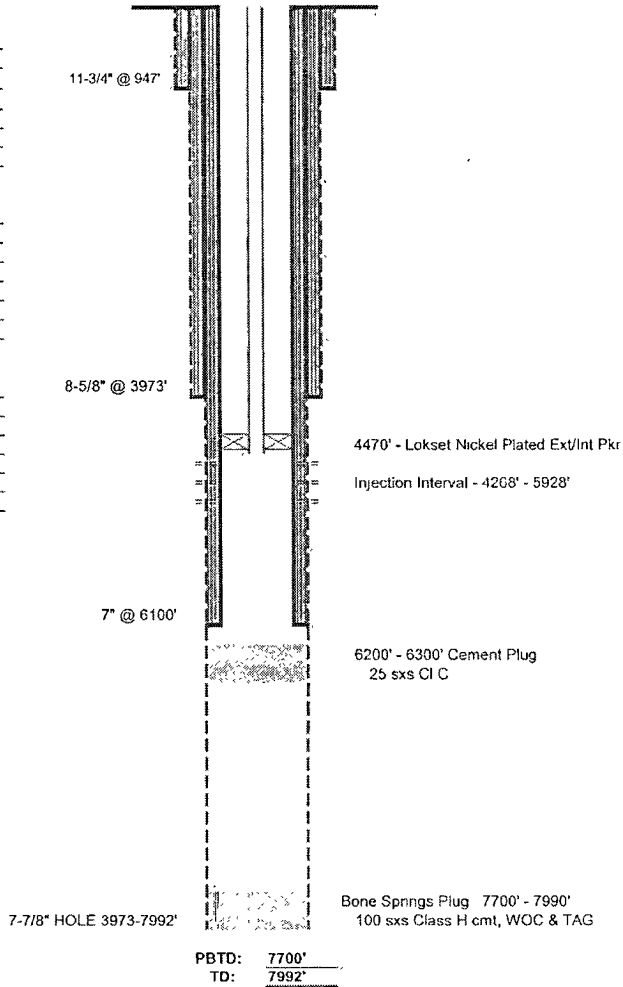
INTERMEDIATE CASING

SIZE: 8-5/8"
 WT/GRD: 32 & 28# WC-50 & K-55
 CSA: 3973'
 SX: 1370 sxs Cl C
 CIRC: Y
 TOC: SURF
 HOLE SIZE: 11" 947-3973'

PRODUCTION CASING

SIZE: 5-1/2"
 WT/GRD: 15 50# J-55
 CSA: 6100'
 SX: 770 sxs Cl "C"
 CIRC: Y
 TOC: SURF
 HOLE SIZE: 7-7/8" 3973-7992'

TUBING: 3-1/2" 9.3# L-80 IPC @ 4470'



Updated: 4/12/2010
 Author: crm
 Engr: CCC