

DISTRICT I

1625 N. French Dr., Hobbs, NM 88240

DISTRICT II

1301 W. Grand Avenue, Artesia, NM 88210

DISTRICT III

1000 Rio Brazos Rd., Aztec, NM 87410

DISTRICT IV

1220 S. St. Francis Dr., Santa Fe, NM 87505

State of New Mexico
Energy, Minerals and Natural Resources Department

OIL CONSERVATION DIVISION

1220 South St. Francis Dr.
Santa Fe, New Mexico 87505

Form C-102

Revised July 18, 2010

Submit one copy to appropriate
District Office

WELL LOCATION AND ACREAGE DEDICATION PLAT

☐ AMENDED REPORT

API Number 30-015-39344	Pool Code 96403 1	Pool Name Wildcat; Bone Spring
Property Code 38760	Property Name PLU BIG SINKS 2 25 30 STATE	Well Number 1H
OGRID No. 147179	Operator Name CHESAPEAKE OPERATING CO.	Elevation 3353'

Surface Location

UL or lot No.	Section	Township	Range	Lot Idn	Feet from the	North/South line	Feet from the	East/West line	County
0	2	25 S	30 E		350	SOUTH	1980	EAST	EDDY

Bottom Hole Location If Different From Surface

UL or lot No.	Section	Township	Range	Lot Idn	Feet from the	North/South line	Feet from the	East/West line	County
B-2	2	25 S	30 E		100	NORTH	1980	EAST	EDDY
Dedicated Acres 160.50	Joint or Infill	Consolidation Code	Order No.						

NO ALLOWABLE WILL BE ASSIGNED TO THIS COMPLETION UNTIL ALL INTERESTS HAVE BEEN CONSOLIDATED
OR A NON-STANDARD UNIT HAS BEEN APPROVED BY THE DIVISION

<p>PROPOSED BOTTOM HOLE LOCATION Lat - N 32.16685029° Long - W 103.8493046° NMSPC- N 424771.947 E 691109.069 (NAD-83)</p> <p>RECEIVED AUG 22 2011 NMO&D ARTESIA</p> <p>Project Area</p> <p>Penetration Point & SURFACE LOCATION Lat - N 32.15340489° Long - W 103.8494179° NMSPC- N 419880.580 E 691095.992 (NAD-83)</p>	<p>B.H.</p> <p>100'</p> <p>1980'</p> <p>499.3'</p> <p>S.L.</p> <p>350'</p> <p>1980'</p>	<p>OPERATOR CERTIFICATION</p> <p>I hereby certify that the information contained herein is true and complete to the best of my knowledge and belief, and that this organization either owns a working interest or unleased mineral interest in the land including the proposed bottom hole location or has a right to drill this well at this location pursuant to a contract with an owner of such a mineral or working interest, or to a voluntary pooling agreement or a compulsory pooling order heretofore entered by the division.</p> <p><i>Bryan Arrant</i> 08/18/2011 Signature Date Bryan Arrant Printed Name bryan.arrant@chk.com Email Address</p> <p>SURVEYOR CERTIFICATION</p> <p>I hereby certify that the well location shown on this plat was plotted from field notes of actual surveys made by me or under my supervision, and that the same is true and correct to the best of my belief.</p> <p><i>GARY L. JONES</i> Date Surveyed Signature & Seal of Professional Surveyor W.C. PROFESSIONAL LAND SURVEYOR</p> <p>Certificate No. Gary L. Jones 7977</p> <p>BASIN SURVEYS 25149</p>
---	---	---



Drilling Engineer: Chris Gray
Superintendent: Rolando Davila
Geologist: Chris Persellin

Well Name: PLU Big Sinks 2-25-30 State 1H
Target: First Bone Spring Shale
County, State: Eddy, NM

Surface Location: 350' FSL 1980' FEL, Section 2, Township 25S, Range 30 E

BH Location: 100' FNL 1980' FEL, Section 2, Township 25S, Range 30 E

SHL Latitude: 32.153405 SHL North: 419881
SHL Longitude: -103.849418 SHL East: 691096
BHL Latitude: 32.16685029 BHL North: 424772
BHL Longitude: -103.8493046 BHL East: 691109
Coordinates: NAD 83 Coordinates: NMSPCE

Drilling Rig: Patterson 62
Directional-Surface: Ryan
Directional-Curve: Ryan

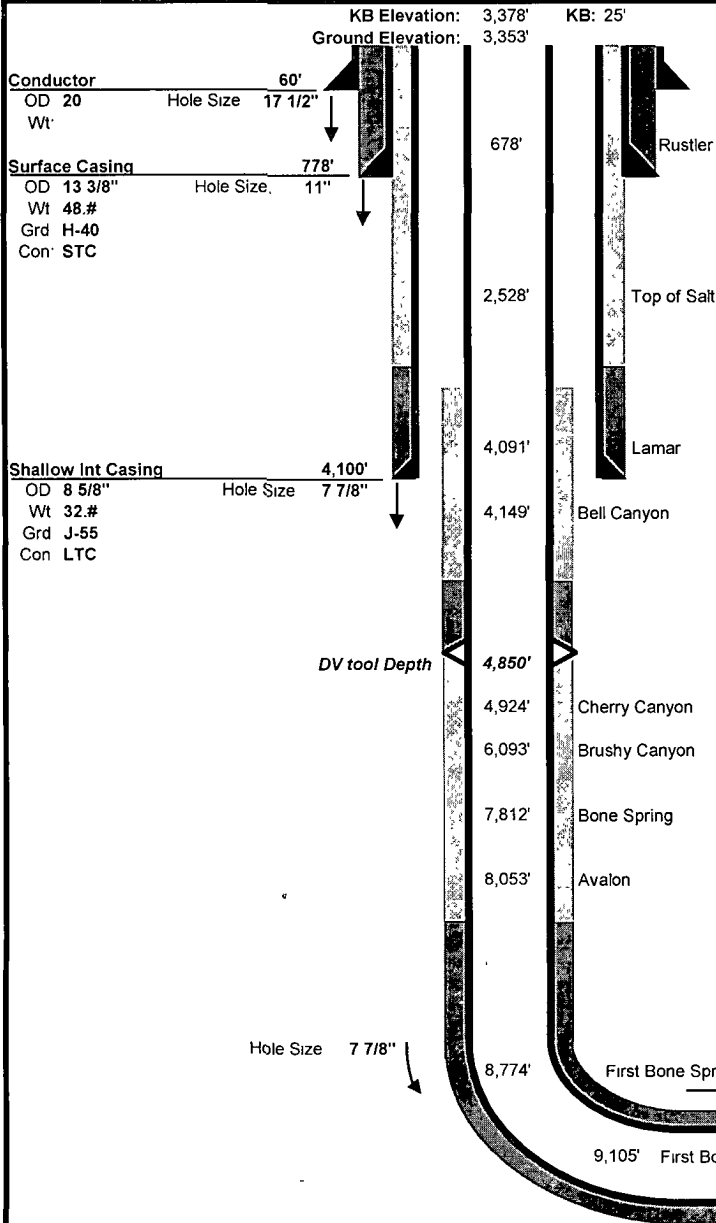
Drilling Mud: Nova

Cement: Schlumberger

Wellhead: Sunbelt

Property Number: 641196

AFE Number: 157879



Wellhead Equipment	
A Section	13-3/8" x 13-5/8" 5K SOW
B Section	13-5/8" 5K X 11" 5K
C Section	11" 5K X 7-1/16" 10K
D Section	N/A
Required BOP Stack	13-5/8" 5K- Double, Annular, Rot Head, W/Orbit Val

Mud				
Depth	Type	Weight	F. Vis	FL
60' - 778'	Spud Mud	8.4 - 8.7	32 - 34	NC - NC
778' - 4,100'	Brine	9.8 - 10.1	28 - 29	NC - NC
4,100' - 8,726'	Cut Brine	8.4 - 9	28 - 30	NC - NC
8,726' - 9,475'	Cut Brine	8.4 - 9	28 - 30	NC - NC
9,475' - 14,197'	Cut Brine	8.4 - 9	28 - 30	NC - NC

Cement						
Slurry	Top	Btm	Wt	Yld	%Exc	Bbl Sx
Surface						
Single Slurry	25'	778'	13.5	1.73	150	237 768
Shallow Int						
Lead	25'	3,600'	12.0	1.8	150	383 1196
Tail	3,600'	4,100'	14.2	1.37	150	59 243
Production						
1st Lead	4,850'	8,700'	12.4	2.09	75	208 559
1st Tail	8,700'	14,197'	14.5	1.24	75	299 1353
2nd Lead	3,600'	4,600'	12.4	2.19	200	62 159
2nd Tail	4,600'	4,850'	14.8	1.33	200	23 98

Directional Plan						
Target Line:	9202' TVD w/89.8 deg inclination					
Target Window:	10' above and 10' below					
	MD	INC	AZM	TVD	VS	DLS
KOP	8,726'	0.00	0.00	8,726'	0'	0.00
EOB	9,475'	89.80	0.15	9,204'	476'	12.00
TD	13,890'	89.80	0.15	9,219'	4,891'	0.00
Hardlines:	Lateral- Actual lease lines Vertical- Actual Lease Lines					
Notes	Please note SHL and BHL distance from lease lines					

LOGS	Type	Logs	Interval	Vendor
	Mudlog	2 man unit	Int Csg to EOC	Suttles
	OH	Triple Combo (Dual Induction)	Curve to Int Csg	TBD
	LWD	MWD/Gamma	Curve/Lateral	Ryan

**SECTION 2, TOWNSHIP 25 SOUTH, RANGE 30 EAST, N.M.P.M.,
EDDY COUNTY, NEW MEXICO.**

PROPOSED LEASE ROAD 1464.1'



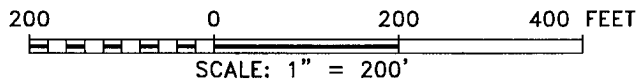
165' NORTH
OFF SET
3349.5'



CHESAPEAKE OPERATING CO.
PLU BIG SINKS 2 25 30 STATE #1H
175' WEST ELEV. - 3353' 125' EAST
OFF SET ☐ OFF SET ☐
3359.7' Lat - N 32.15340489° 3350.2'
Long - W 103.8494179°
NMSPCE- N 419880.580
E 691095.992
(NAD-83)



165' SOUTH
OFF SET
3358.9'



Directions to Location:

FROM THE JUNCTION OF BUCK JACKSON AND TWIN
WELLS, GO NORTHWEST ON TWIN WELLS FOR 0.1
MILES TO LEASE ROAD, ON LEASE ROAD GO
SOUTHWEST 0.4 MILES TURNING SOUTH FOR 0.3
MILES TO WELL PAD AND PROPOSED LEASE ROAD.

CHESAPEAKE OPERATING CO.

REF: PLU BIG SINKS 2 25 30 STATE #1H / WELL PAD TOPO

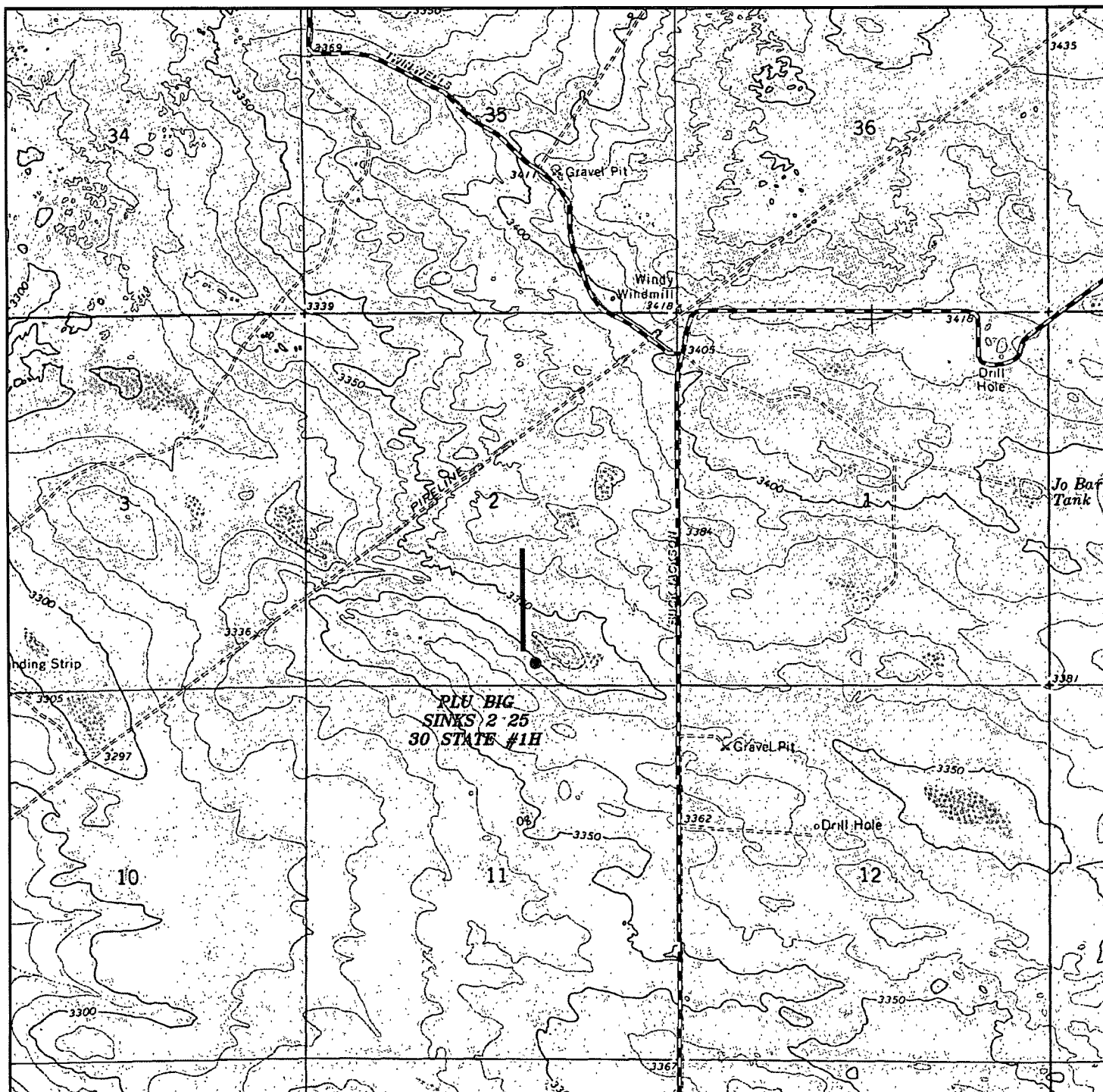
THE PLU BIG SINKS 2 25 30 STATE #1H LOCATED 350'
FROM THE SOUTH LINE AND 1980' FROM THE EAST LINE OF
SECTION 2, TOWNSHIP 25 SOUTH, RANGE 30 EAST,
N.M.P.M., EDDY COUNTY, NEW MEXICO.

BASIN SURVEYS P.O. BOX 1786-HOBBS, NEW MEXICO

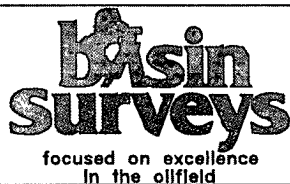
W.O. Number: 25149 Drawn By: J. SMALL

Date: 08-15-2011 Disk: JMS 25149

Survey Date: 08-11-2011 Sheet 1 of 1 Sheets



PLU BIG SINKS 2 25 30 STATE #1H
 Located 350' FSL and 1980' FEL
 Section 2, Township 25 South, Range 30 East,
 N.M.P.M., Eddy County, New Mexico.



P.O. Box 1786
 1120 N. West County Rd.
 Hobbs, New Mexico 88241
 (575) 393-7316 - Office
 (575) 392-2206 - Fax
 basinsurveys.com

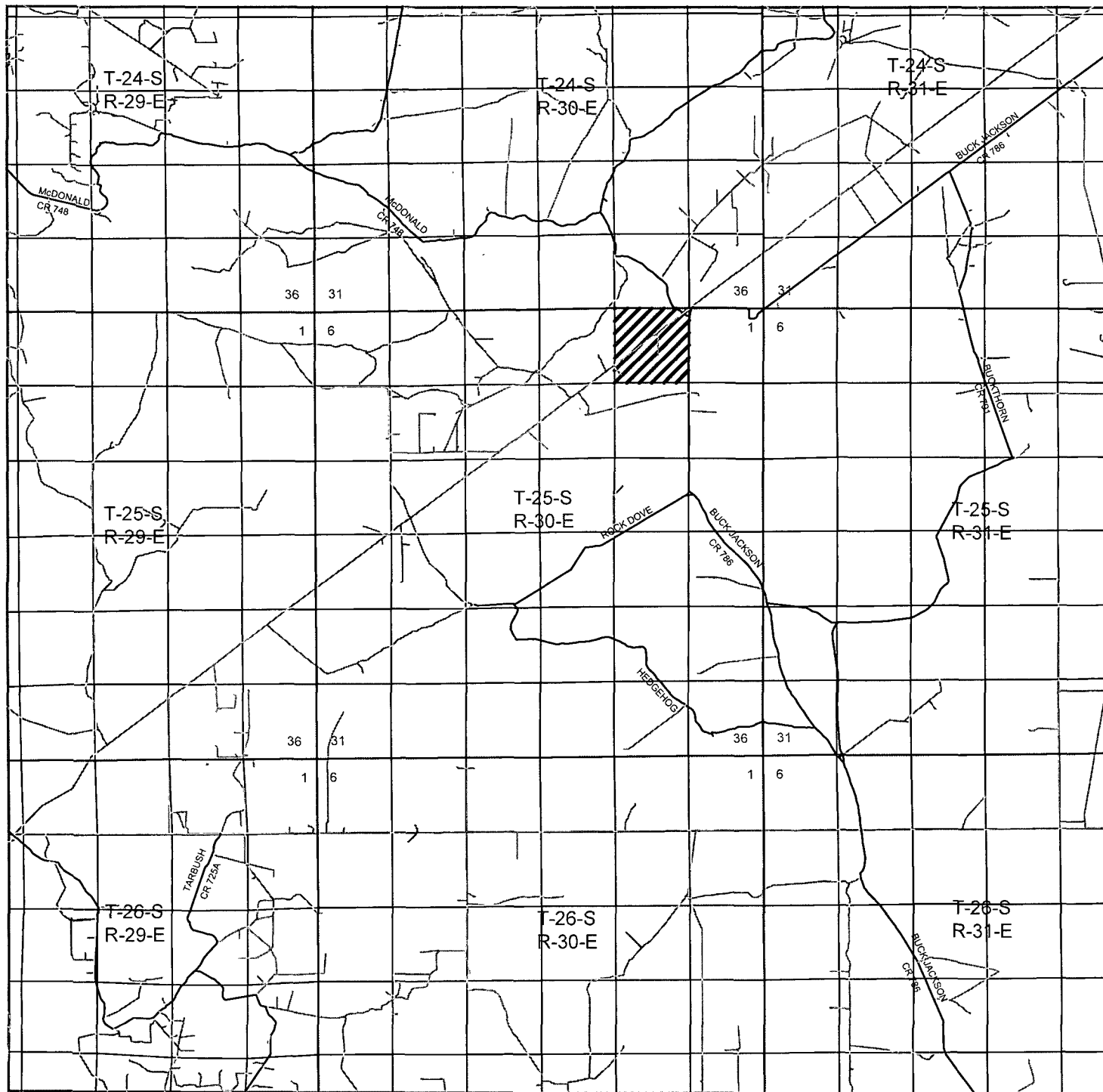
W.O. Number: JMS 25149

Survey Date: 08-11-2011

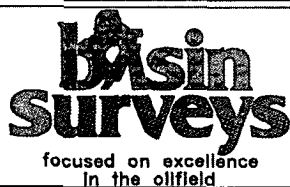
Scale: 1" = 2000'

Date: 08-15-2011

CHESAPEAKE
 OPERATING CO.



PLU BIG SINKS 2 25 30 STATE #1H
 Located 350' FSL and 1980' FEL
 Section 2, Township 25 South, Range 30 East,
 N.M.P.M., Eddy County, New Mexico.



P.O. Box 1786
 1120 N. West County Rd.
 Hobbs, New Mexico 88241
 (575) 393-7316 - Office
 (575) 392-2206 - Fax
 basinsurveys.com

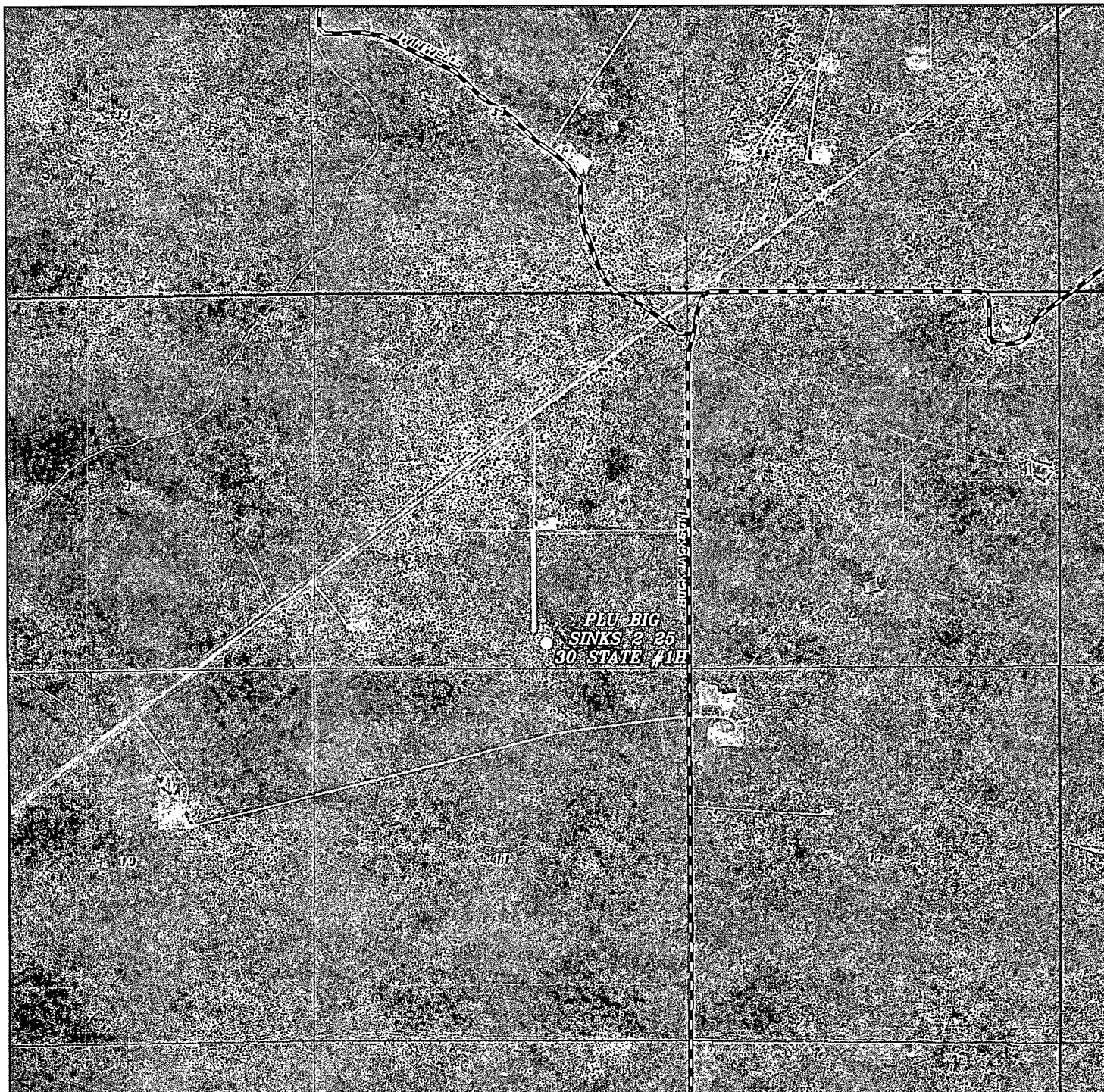
W.O. Number: JMS 25149

Survey Date: 08-11-2011

Scale: 1" = 2 Miles

Date: 08-15-2011

CHESAPEAKE
 OPERATING CO.



PLU BIG SINKS 2 25 30 STATE #1H
Located 350' FSL and 1980' FEL
Section 2, Township 25 South, Range 30 East,
N.M.P.M., Eddy County, New Mexico.

basin
surveys
focused on excellence
in the oilfield

P.O. Box 1786
1120 N. West County Rd.
Hobbs, New Mexico 88241
(575) 393-7316 - Office
(575) 392-2206 - Fax
basinsurveys.com

W.O. Number: JMS 25149

Scale: 1" = 2000'

YELLOW TINT - USA LAND
BLUE TINT - STATE LAND
NATURAL COLOR - FEE LAND

CHESAPEAKE
OPERATING CO.