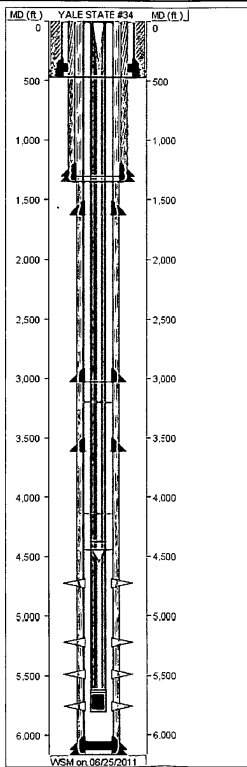


Well ID: 30-015-38493

Well Name: YALE STATE #34

Event#: 2.00

Report Dates: 06/25/2011



PIPE SPECIFICATION

STRING NAME	SECTION NAME	JOINT COUNT	START DEPTH	END DEPTH	LENGTH	OD SIZE	ID SIZE	WT GRDNT	GRD	CONN
SURFACE	GUIDE SHOE		469.90	471.00	1.10	14.38	12.71			
SURFACE	CASING	1	425.74	469.90	44.16	13.38	12.71	48.0	H40	STC
SURFACE	INSERT FLOAT		425.74	425.74	0.00					
SURFACE	CASING	10	12.10	425.74	440.61	13.38	12.71	48.0	H40	STC
PRODUCTION	FLOAT SHOE		6165.18	6166.63	1.45	6.05	4.89			
PRODUCTION	CASING	1	6121.81	6165.18	43.37	5.50	4.89	17.0	J55	LTC
PRODUCTION	FLOAT COLLAR		6120.51	6121.81	1.30	6.05	4.89			LTC
PRODUCTION	CASING	60	3614.94	6120.51	2505.57	5.50	4.89	17.0	J55	LTC
PRODUCTION	FLINT COAT	14	3028.82	3614.94	586.12	5.50	4.89	17.0	L80	LTC
PRODUCTION	DV TOOL		3026.47	3028.82	2.35	6.05	4.89			LTC
PRODUCTION	FLINT COAT	34	1623.35	3026.47	1403.12	5.50	4.89	17.0	L80	LTC
PRODUCTION	CASING	38	11.60	1623.35	1611.75	5.50	4.89	17.0	J55	LTC
PRODUCTION	LANDING JOINT		-2.62	11.60	14.22	5.50	4.89	17.0	J55	LTC
PRODUCTION				-2.62	-2.62					
TUBING	BULL PLUG		5802.08	5802.46	0.38	2.88	2.50	6.5	J-55	8-
TUBING	MUD ANCHOR	5	5639.07	5802.08	163.01	2.88	2.50	6.5	J-55	8-
TUBING	CAVINS		5619.77	5639.07	19.30	2.88	2.50	6.5	J-55	8-
TUBING	SEAT NIPPLE		5618.97	5619.77	0.80	2.88	2.50	6.5	J-55	8-
TUBING	TUBING	36	4445.15	5618.97	1173.82	2.88	2.50	6.5	J-55	8-
TUBING	TUBING ANCHOR		4442.45	4445.15	2.70	5.50	4.89	17.0	J-55	8-
TUBING	TUBING	2	4377.21	4442.45	65.24	2.88	2.50	6.5	J-55	8-
TUBING	MARKER JOINT		4375.21	4377.21	2.00	2.88	2.50	6.5	J-55	8-
TUBING	TUBING	134	0.00	4375.21	4375.21	2.88	2.50	6.5	J-55	8-
INTERMEDIATE	GUIDE SHOE		1348.90	1350.00	1.10	9.63	8.10			STC
INTERMEDIATE	CASING	1	1306.15	1348.90	42.75	8.63	8.10	24.0	J55	STC
INTERMEDIATE	FLOAT COLLAR		1304.70	1306.15	1.45	9.63	8.10			STC
INTERMEDIATE	CASING	31	12.00	1304.70	1307.60	8.63	8.10	24.0	J55	STC

CEMENTING

STRING NAME	STAGE #	LEAD TOP (est) (ft)	LEAD TOP (ver) (ft)	TAIL TOP (est) (ft)	TAIL TOP (ver) (ft)
SURFACE	1	110.0			
SURFACE	2	0.0	0.0		
PRODUCTION	1	3026.0			
PRODUCTION	2	0.0	0.0		
INTERMEDIATE	1	0.0	0.0	0.0	0.0

BHA STRING

DRILL EQUIP CODE	DESCRIPTION	LENGTH	OD SIZE	ID SIZE

RECEIVED
AUG 9 2011
NMOCD ARTESIA

Well ID: 30-015-38493

Well Name: YALE STATE #34

Event#: 2.00

Report Dates: 06/25/2011

PERFORATION							
ZONE	JOB REPORT DATE	ZONE NAME	TOP DEPTH	BOTTOM DEPTH	HOLE SIZE	PEN SIZE	SQUEEZED
1	06/17/2011	BLINEBRY	5655.00	5855.00	0.34	24.00	N
2	06/17/2011	BLINEBRY	5385.00	5585.00	0.34	24.00	N
3	06/17/2011	BLINEBRY	5115.00	5315.00	0.34	24.00	N
4	06/17/2011	PADDOCK	4600.00	4850.00	0.34	24.00	N