

## DISTRICT I

1625 N. French Dr., Hobbs, NM 88240

## DISTRICT II

1301 W. Grand Avenue, Artesia, NM 88210

## DISTRICT III

1000 Rio Brazos Rd., Aztec, NM 87410

## DISTRICT IV

1220 S. St. Francis Dr., Santa Fe, NM 87505

State of New Mexico  
Energy, Minerals and Natural Resources DepartmentForm C-102  
Revised October 12, 2005

Submit to Appropriate District Office

State Lease - 4 Copies

Fee Lease - 3 Copies

## OIL CONSERVATION DIVISION

1220 South St. Francis Dr.  
Santa Fe, New Mexico 87505☐ AMENDED REPORT

## WELL LOCATION AND ACREAGE DEDICATION PLAT

API Number <b>30-015-38059</b>	Pool Code <b>967 21</b>	Pool Name <b>LAGUNA SALADO BONE SPRING</b>
Property Code <b>30668</b>	Property Name <b>SPUD "16" STATE</b>	Well Number <b>9H</b>
OGRID No. <b>6137</b>	Operator Name <b>DEVON ENERGY PRODUCTION COMPANY LP</b>	Elevation <b>2956'</b>

## Surface Location

UL or lot No.	Section	Township	Range	Lot Idn	Feet from the	North/South line	Feet from the	East/West line	County
<b>0</b>	<b>16</b>	<b>23 S</b>	<b>29 E</b>		<b>1265</b>	<b>SOUTH</b>	<b>1905</b>	<b>EAST</b>	<b>EDDY</b>

## Bottom Hole Location If Different From Surface

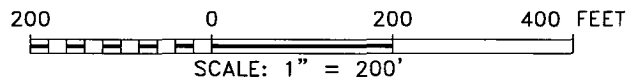
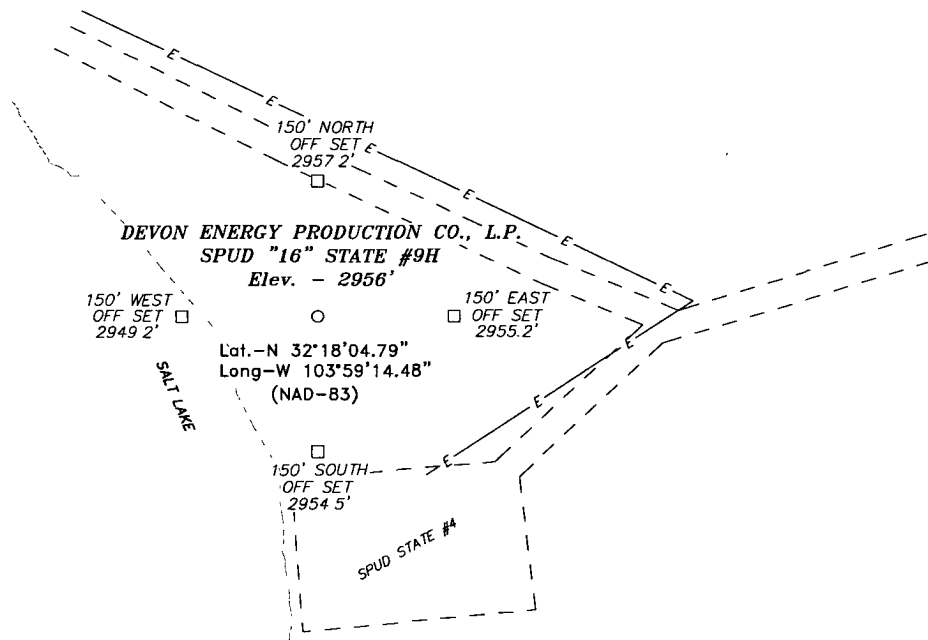
UL or lot No.	Section	Township	Range	Lot Idn	Feet from the	North/South line	Feet from the	East/West line	County
<b>B</b>	<b>16</b>	<b>23 S</b>	<b>29 E</b>		<b>330</b>	<b>NORTH</b>	<b>2018</b>	<b>EAST</b>	<b>EDDY</b>
Dedicated Acres <b>160</b>	Joint or Infill	Consolidation Code	Order No.						

NO ALLOWABLE WILL BE ASSIGNED TO THIS COMPLETION UNTIL ALL INTERESTS HAVE BEEN CONSOLIDATED  
OR A NON-STANDARD UNIT HAS BEEN APPROVED BY THE DIVISION

N: 477576.100 E: 644865.689 N: 321844.945" W: -1035953.584"	<p><b>BOTTOM HOLE LOCATION</b>          Lot - N32°18'41.70"          Long - W103°59'15.14"          SPC- N.: 477258.607          E.: 648166.289          (NAD-83)</p> <p>Project Area Producing Area</p>	<p><b>OPERATOR CERTIFICATION</b></p> <p>I hereby certify that the information contained herein is true and complete to the best of my knowledge and belief, and that this organization either owns a working interest or unleased mineral interest in the land including the proposed bottom hole location pursuant to a contract with an owner of such a mineral or working interest, or to a voluntary pooling agreement or a compulsory pooling order heretofore entered by the division.</p> <p>Signature <u>Judy A. Barnett</u> Date <u>6/24/11</u></p> <p>Printed Name Regulatory Specialist</p>
N: 472258.253 E: 644826.505 N: 321752.322" W: -1035954.235"	<p><b>SURFACE LOCATION</b>          Lot - N32°18'04.79"          Long - W103°59'14.48"          SPC- N.: 473535.556          E.: 648238.524          (NAD-83)</p> <p>PP: 1158 FSL &amp; 1887 FEL</p>	<p><b>SURVEYOR CERTIFICATION</b></p> <p>I hereby certify that the well location shown on this plat was plotted from field notes of actual surveys made by me or under my supervision, and that the same is true and correct to the best of my belief.</p> <p>MAY 30 2008</p> <p>Date Surveyed <u>May 30, 2008</u>          Signature &amp; Seal of Professional Surveyor <u>Gary L. Jones</u></p> <p>W.O. <u>9777</u></p> <p>Certificate No. Gary L. Jones 7977</p> <p><b>BASIN SURVEYS</b></p>

**RECEIVED**  
 JUN 27 2011  
 NMOCD ARTESIA

SECTION 16, TOWNSHIP 23 SOUTH, RANGE 29 EAST, N.M.P.M.,  
EDDY COUNTY, NEW MEXICO.



Directions to Location:

FROM THE JUNCTION OF HWY 128 AND RAWHIDE, GO SOUTH ON RAWHIDE FOR 3.3 MILES TO END OF PAVEMENT, GO WEST 3.0 MILES TO LEASE ROAD, GO NORTH 1.8 MILES TO PAD SPUD "16" #2, GO LEFT 0.2 MILES TO PROPOSED WELL.

**BASIN SURVEYS** P.O. BOX 1786—HOBBS, NEW MEXICO

W.O. Number: 19717

Drawn By: J. M. SMALL

Date: 06-02-2008

Disk: 19717 JMS

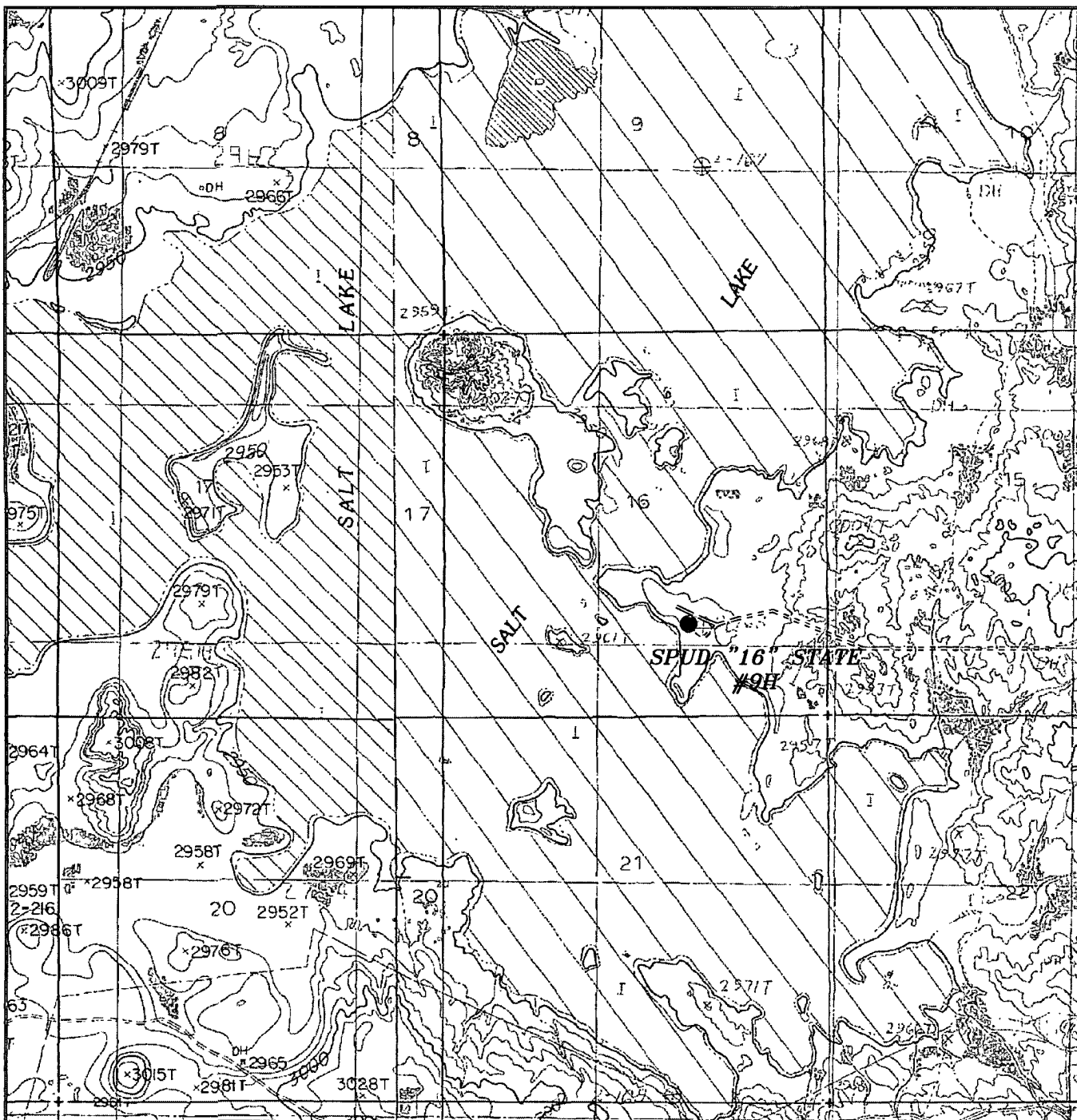
**DEVON ENERGY PROD. CO., L.P.**

REF: SPUD "16" STATE #9H / WELL PAD TOPO

THE SPUD "16" STATE #9H LOCATED 1265' FROM THE SOUTH LINE AND 1905' FROM THE EAST LINE OF SECTION 16, TOWNSHIP 23 SOUTH, RANGE 29 EAST, N.M.P.M., EDDY COUNTY, NEW MEXICO.

Survey Date: 05-30-2008

Sheet 1 of 1 Sheets



**SPUD "16" STATE #9H**  
 Located at 1265' FSL AND 1905' FEL  
 Section 16, Township 23 South, Range 29 East,  
 N.M.P.M., Eddy County, New Mexico.

**basin**  
**surveys**  
 focused on excellence  
 in the oilfield

P.O. Box 1786  
 1120 N. West County Rd.  
 Hobbs, New Mexico 88241  
 (505) 393-7316 - Office  
 (505) 392-3074 - Fax  
 basinsurveys.com

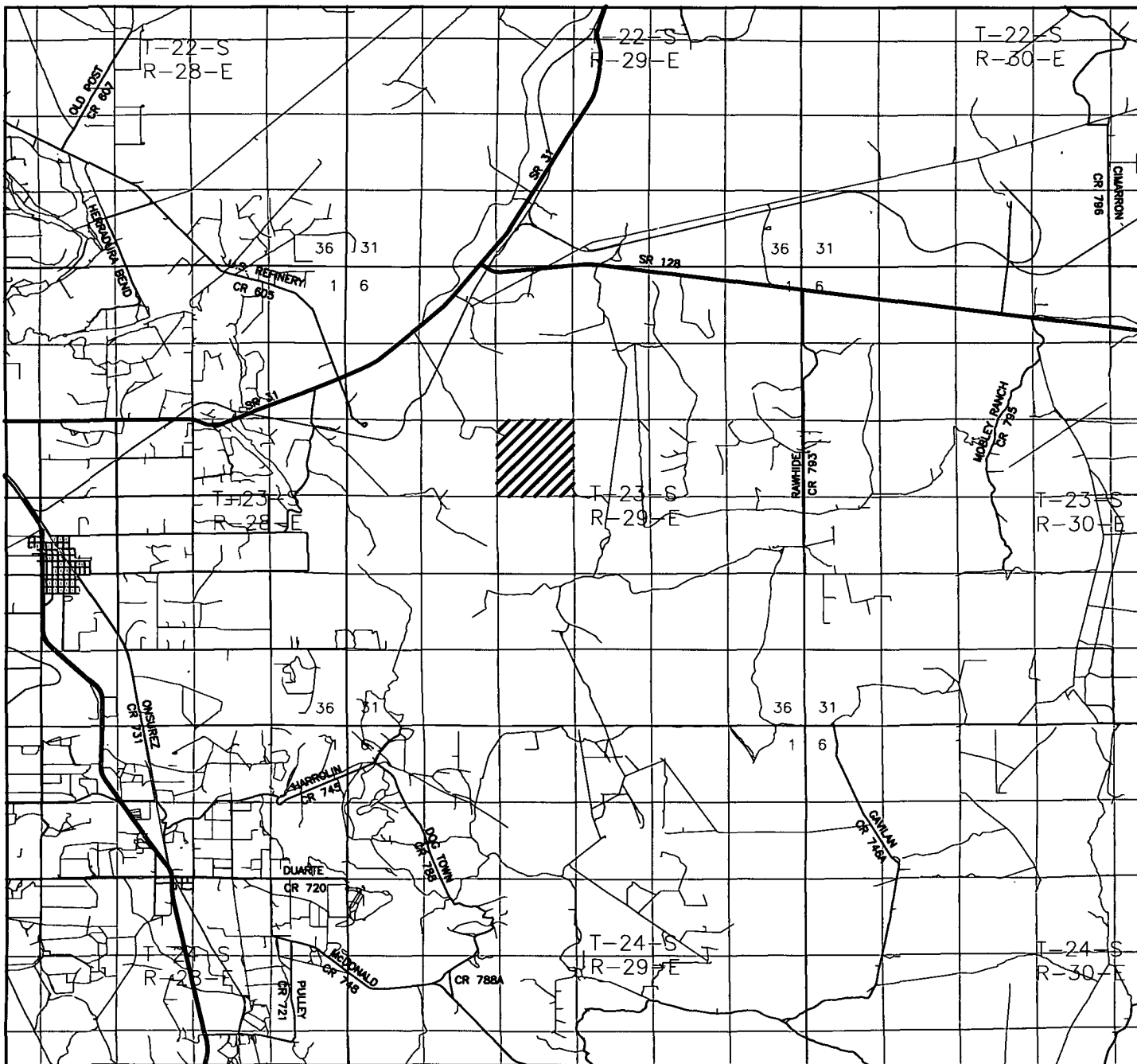
W.O. Number: JMS 19717

Survey Date: 05-30-2008

Scale: 1" = 2000'

Date: 06-02-2008

**DEVON ENERGY**  
**PROD. CO., L.P.**



SPUD "16" STATE #9H

Located at 1265' FSL AND 1905' FEL  
Section 16, Township 23 South, Range 29 East,  
N.M.P.M., Eddy County, New Mexico.

**basin**  
**surveys**

focused on excellence  
in the oilfield

P.O. Box 1786  
1120 N. West County Rd.  
Hobbs, New Mexico 88241  
(505) 393-7316 - Office  
(505) 392-3074 - Fax  
basinsurveys.com

W.O. Number: JMS 19717

Survey Date: 05-30-2008

Scale: 1" = 2 MILES

Date: 06-02-2008

DEVON ENERGY  
PROD. CO., L.P.