

30-015-39364

HOBBS OCD

HYDROGEN SULFIDE (H2S) CONTINGENCY PLAN

AUG 26 2011

ASSUMED 100 PPM ROE = 3000'

RECEIVED

Emergency Procedures**In the event of a release of gas containing H2S, The first responder(s) must**

- * Isolate the area and prevent entry by other persons into the 100 PPM ROE.
- * Evacuate any public places encompassed by 100 PPM ROE.
- * Be equipped with H2S monitors and air packs in order to control release.
- * Use the "buddy system" to ensure no injuries occur during the response.
- * Take precautions to avoid personal injury during this operation.
- * Have received training in the following:
 1. H2S detection
 2. Measures for protection against this gas
 3. Equipment used for protection and emergency response.

Ignition of Gas Source

Should control of the well be considered lost and ignition considered, take care to protect against exposure to Sulfur Dioxide (SO2.) Intentional ignition must be coordinated with the NMOCD and local officials. Additionally the New Mexico State Police may become involved. NM State Police shall be the incident command on scene of any major release. Take care to protect downwind whenever there is an ignition of gas.

Characteristics of H2S and SO2

Common Name	Chemical Formula	Specific Gravity	Threshold Limit	Hazardous Limit	Lethal Concentration
Hydrogen Sulfide	H2S	1.189 Air = 1	10 ppm	100 ppm/hr	600 ppm
Sulfur Dioxide	SO2	2.21 Air = 1	2 ppm	NA	1000 ppm

Contacting Authorities

Burnett Oil Co., Inc. personal must liaison with local and state agencies to ensure a proper response to a major release. Additionally, the OCD must be notified of the release as soon as possible but no later than 4 hours. Agencies will ask for information such as type and volume of release, wind and direction, location of release, etc. **Be sure all is written down and ready to give to contact list (Drilling Exhibit A.) Directions to the site are below.** Burnett's response must be in coordination with the State of New Mexico's Hazardous Materials Emergency Response Plan.

**Burnett Office 87 SQUARE LAKE ROAD (CR #220), Loco Hills, New Mexico 88255
(Loco Hills, New Mexico (2 MILES East of Loco Hills On US Hwy 82 TO C#220 Then North On CR# 220 Approx One Mile To Office**

BURNETT OIL CO., INC.

DRILLING EXHIBIT B

AUG 26 2011

BURNETT OIL CO., INC. EMERGENCY NOTIFICATION LIST **RECEIVED**

Burnett's New Mexico Office (575) 677-2313
Belton Mathews BOCI District Superintendent CELL (575) 703-9601
 BURNETT OIL HOME OFFICE (817) 332-5108
Mark Jacoby BOCI ENGINEERING MANAGER CELL (817) 312-2751

EDDY COUNTY SHERIFF 911 OR (575) 746-9888
NEW MEXICO STATE POLICE (575) 746-2701

Loco Hills Fire Department (VOLUNTEER ONLY) 911 OR (575) 677 2349
For Medical and Fire (575) 746-2701 (ARTESIA)

Flight for Life Air Ambulance (LUBBOCK) (806) 743-9911
Aerocare Air Ambulance (LUBBOCK) (806) 747-8923
Med Flight Air Ambulance (ALBUQ) (505) 842-4433
S B Med Svc Air Ambulance (ALBUQ) (505) 842-4949

US Bureau of Land Management Carlsbad (575) 361-2822 (575) 234-5972
New Mexico Oil Conversation Division ARTESIA (575) 748-1283
New Mexico Emergency Response Commission 24 HR (575) 827-9126
New Mexico State Emergency Operation Center (575) 476-9635
Local Emergency Planning Committee (Artesia) (575) 746-2122
National Emergency Response Center (Washington, DC) (800) 424-8802

Boots & Coots IWC (800) 256-9688
Cudd Pressure Control (432) 570-5300
Halliburton Svc (575) 746-2757
B J Svc (575) 746-2293

THIS MUST BE POSTED AT THE RIG WHILE ON LOCATION.

Burnett Office 87 SQUARE LAKE ROAD (CR #220), Loco Hills, New Mexico 88255
 (Loco Hills, New Mexico (2 MILES East of Loco Hills On US Hwy 82 TO C#220 Then
 North On CR# 220 Approx One Mile To Office.).

DRILLING EXHIBIT A

DRILLING EXHIBIT A

BURNETT OIL CO., INC. OPERATOR CERTIFICATION
ALL VERTICAL MALJAMAR, WEST (Yeso) WELLS
FEDERAL LEASE # LC029338A, (NM) LC029415B, (NM) LC029415A
Section 12, 13, 24 Township 17 South, Range 31 East, Eddy County, N.M

Operator's Representative:

Burnett Oil Co., Inc. field representative responsible for compliance with the approved surface use and operations plan is

Mr. Belton Mathews, District Supt
P O Box 188
Loco Hills, New Mexico 88255
Office phone. (575) 677-2313
Home phone (575) 746-8647
Cellular phone. (575) 703-9601

I hereby certify that I, or persons under my direct supervision have inspected the drill site and access route; that I am familiar with the conditions that currently exist; that the statements made in this plan are to the best of my knowledge, true and correct; and that the work associated with operations proposed herein will be performed by Burnett Oil Co., Inc. and its contractors and subcontractors in conformity with this plan and the terms and conditions under which it is approved. This statement is subject to the provisions of 18 U.S.C. 1001 for the filing of a false statement.

Date

6/21/11

By

Mark A. Jacoby
Mark A. Jacoby
Engineering Manager

BURNETT OIL CO., INC. OPERATOR CERTIFICATION
ALL VERTICAL MALJAMAR, WEST (Yeso) WELLS
FEDERAL LEASE # LC029338A, (NM) LC029415B, (NM) LC029415A
Section 12, 13, 24 Township 17 South, Range 31 East, Eddy County, N.M

Operator's Representative:

Burnett Oil Co., Inc. field representative responsible for compliance with the approved surface use and operations plan is:

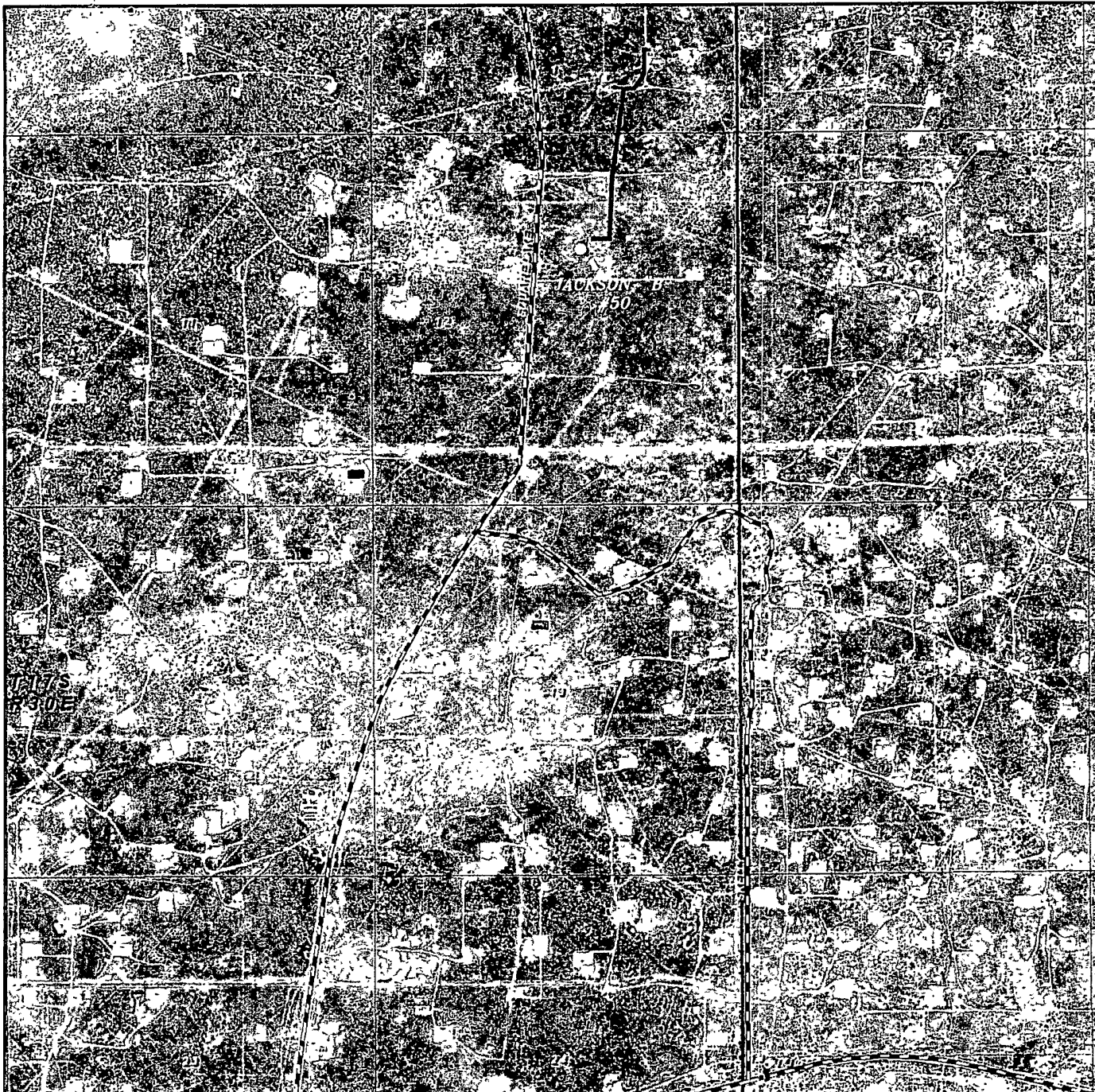
Mr. Belton Mathews, District Supt
P O. Box 188
Loco Hills, New Mexico 88255
Office phone. (575) 677-2313
Home phone. (575) 746-8647
Cellular phone (575) 703-9601

I hereby certify that I, or persons under my direct supervision have inspected the drill site and access route; that I am familiar with the conditions that currently exist; that the statements made in this plan are to the best of my knowledge, true and correct, and that the work associated with operations proposed herein will be performed by Burnett Oil Co., Inc. and its contractors and subcontractors in conformity with this plan and the terms and conditions under which it is approved. This statement is subject to the provisions of 18 U.S.C. 1001 for the filing of a false statement.

Date. 6/21/11

By Mark A. Jacoby

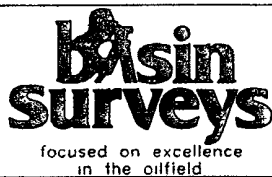
Mark A. Jacoby
Engineering Manager



JACKSON "B" #50

SURFACE EXHIBIT A2

Located 1650' FNL and 2310' FEL
Section 12, Township 17 South, Range 30 East,
N.M.P.M., Eddy County, New Mexico.



P.O. Box 1786
1120 N West County Rd.
Hobbs, New Mexico 88241
(575) 393-7316 - Office
(575) 392-2206 - Fax
basinsurveys.com

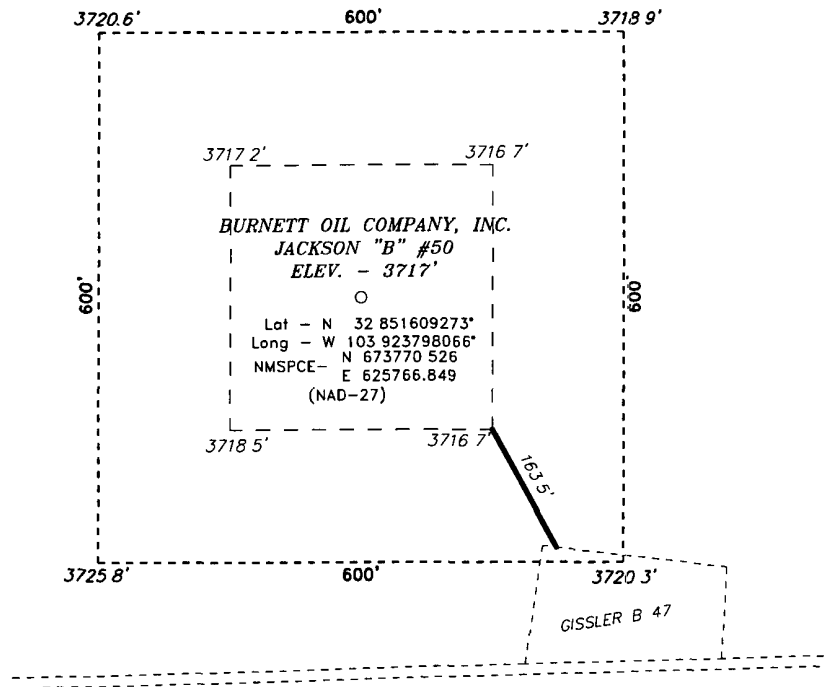
W O Number JMS 24417

Scale 1" = 2000'

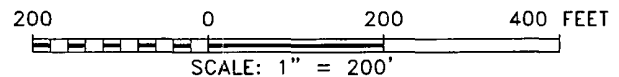
YELLOW TINT - USA LAND
BLUE TINT - STATE LAND
NATURAL COLOR - FEE LAND

BURNETT OIL
COMPANY, INC.

SECTION 12, TOWNSHIP 17 SOUTH, RANGE 30 EAST, N.M.P.M.,
EDDY COUNTY, NEW MEXICO.



SURFACE EXHIBIT C



Directions to Location

FROM THE JUNCTION OF US HWY 285 AND SQUARE LAKE, GO NORTH ON SQUARE LAKE FOR 2.4 MILES TO LEASE ROAD, ON LEASE ROAD GO EAST 0.1 MILES TO GB47 PAD AND PROPOSED LEASE ROAD

BASIN SURVEYS P.O. BOX 1786-HOBBS, NEW MEXICO

WQ Number 24417 Drawn By J. SMALL

Date 06-13-2011 Disk JMS 24417

BURNETT OIL COMPANY, INC.

REF JACKSON "B" #50 / WELL PAD TOPO

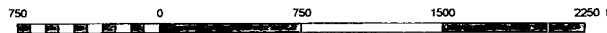
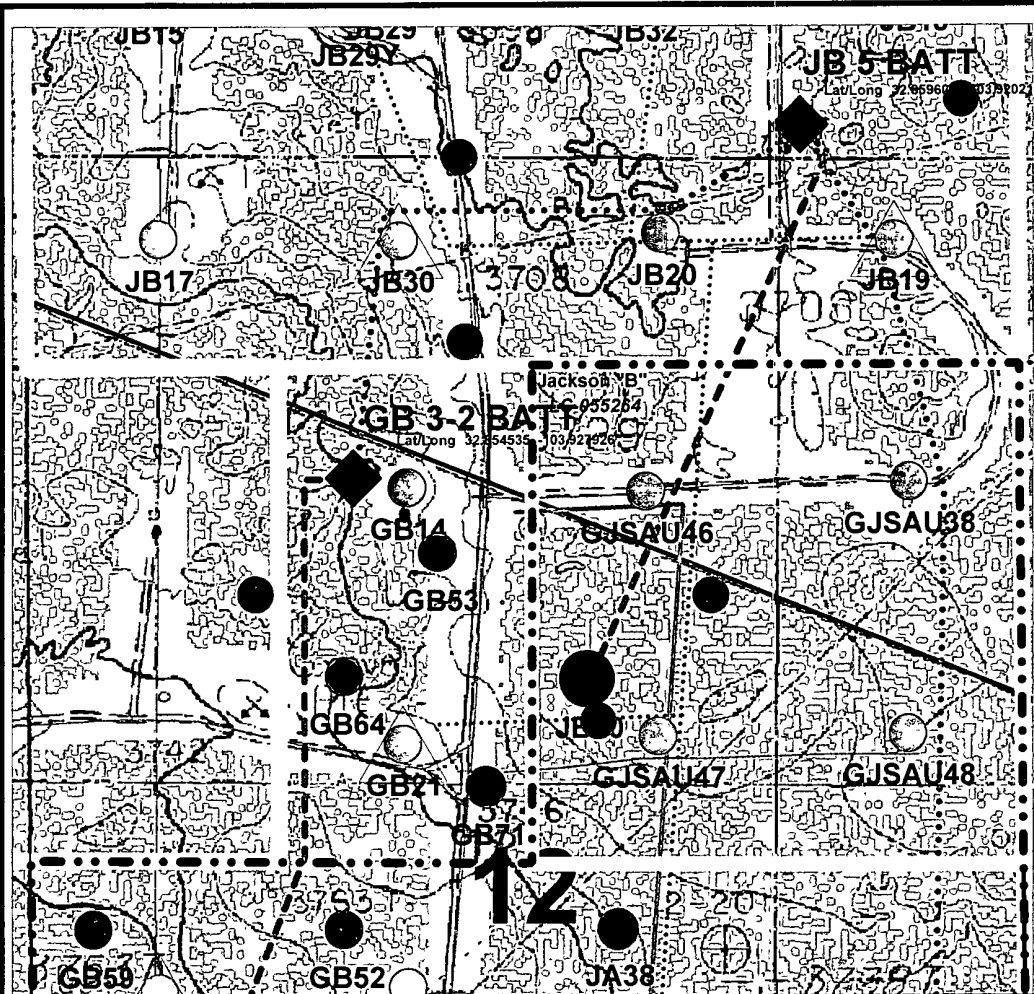
THE JACKSON "B" #50 LOCATED 1650'

FROM THE NORTH LINE AND 2310' FROM THE EAST LINE OF

SECTION 12, TOWNSHIP 17 SOUTH, RANGE 30 EAST,

N.M.P.M., EDDY COUNTY, NEW MEXICO.

Survey Date 06-03-2011 Sheet 1 of 1 Sheets



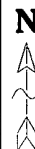
Well Names

GA = Gissler A
 GB = Gissler B
 JA = Jackson A
 JB = Jackson B
 SA = Stevens A
 SB = Stevens B
 GJSA = Grayburg Jackson San Andres

Burnett Oil Co., Inc.
 6666

Jackson B50 Proposed Well Location
 (Map Reflects Burnett Operated Wells Only)
 Eddy County, New Mexico

Author: Cl K. Eng Tsch.	Date: June 8, 2011
Scale: 1" = 750'	

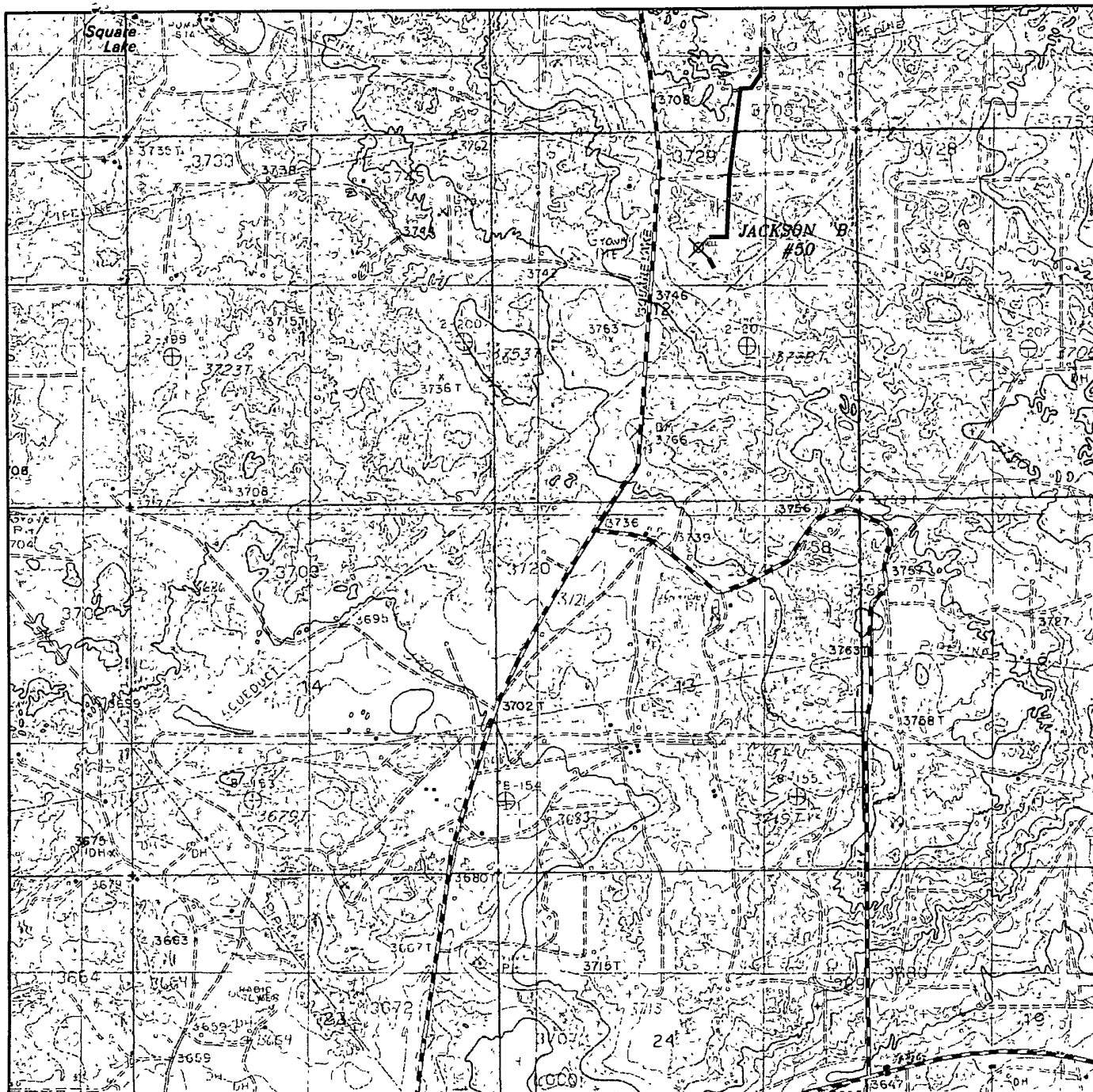


--- flowline

Jackson B50

T17S, R30E, Sect 12, Unit G, NMLC055264
 1650' FNL, 2310' FEL, Jackson B5 Battery
 Lat/Long: 32.851611, -103.923915

SURFACE EXHIBIT B

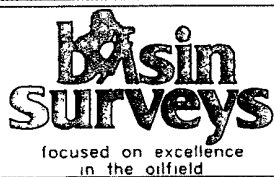


SURFACE EXHIBIT A1

JACKSON "B" #50

Located 1650' FNL and 2310' FEL

Section 12, Township 17 South, Range 30 East,
N.M.P.M., Eddy County, New Mexico.



P O Box 1786
1120 N West County Rd.
Hobbs, New Mexico 88241
(575) 393-7316 - Office
(575) 392-2206 - Fax
basinsurveys.com

W O Number JMS 24417

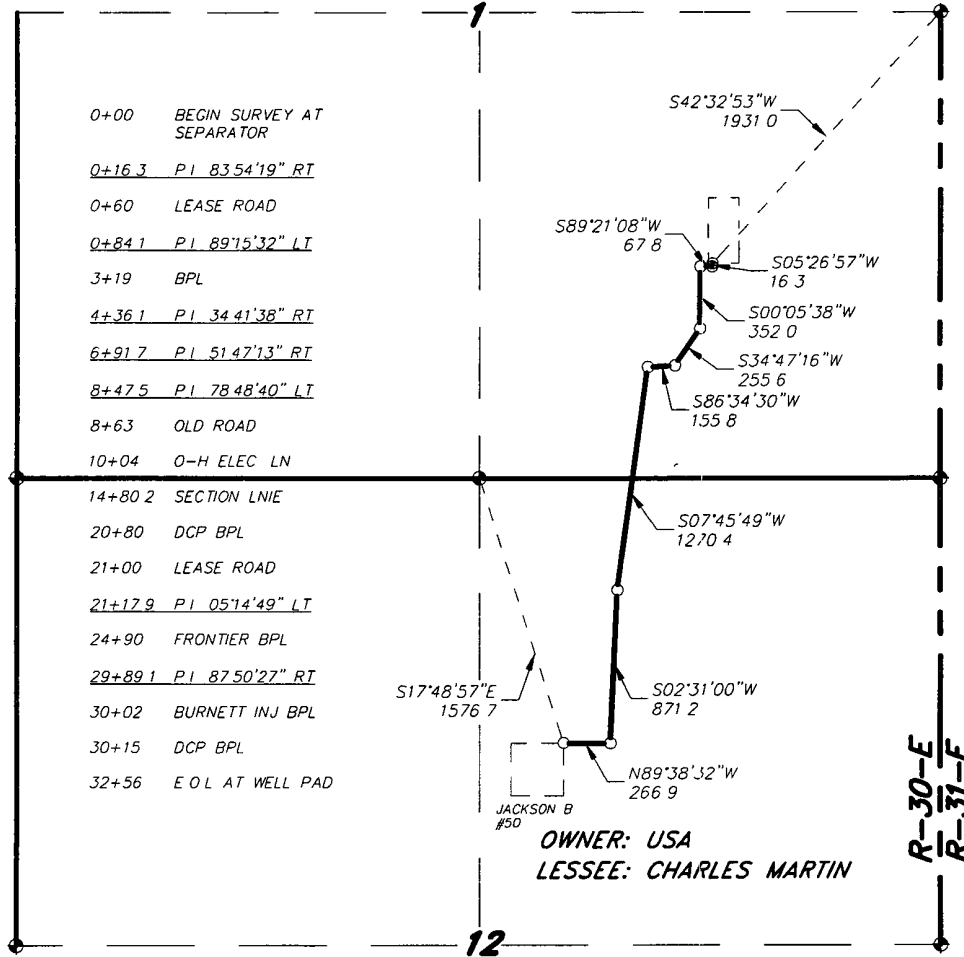
Survey Date 06-03-2011

Scale 1" = 2000'

Date 06-13-2011

BURNETT OIL
COMPANY, INC.

SECTIONS 1&12, TOWNSHIP 17 SOUTH, RANGE 30 EAST, N.M.P.M.,
EDDY COUNTY, NEW MEXICO.



LEGAL DESCRIPTION

A STRIP OF LAND 300 FEET WIDE, LOCATED IN SECTIONS 1&12, TOWNSHIP 17 SOUTH, RANGE 30 EAST, N.M.P.M., EDDY COUNTY, NEW MEXICO AND BEING 150 FEET LEFT AND RIGHT OF THE ABOVE PLATTED CENTERLINE SURVEY

SECTION 1 = 1480.2 FEET = 89.71 RODS = 0.28 MILES = 1.02 ACRES
SECTION 12 = 1775.8 FEET = 107.62 RODS = 0.34 MILES = 1.22 ACRES
TOTAL = 3256.0 FEET = 197.33 RODS = 0.62 MILES = 2.24 ACRES

I HEREBY CERTIFY THAT THIS PLAT WAS PREPARED FROM FIELD NOTES OF AN ACTUAL SURVEY AND MEETS OR EXCEEDS ALL REQUIREMENTS FOR LAND SURVEYS AS SPECIFIED BY THIS STATE

GARY L. JONES
PROFESSIONAL LAND SURVEYOR
NEW MEXICO
1977

GARY L. JONES No. 7977
TEXAS P.L.S. No. 5074



BURNETT OIL COMPANY, INC.

REF. PROPOSED FLOWLINE TO THE JACKSON "B" #50

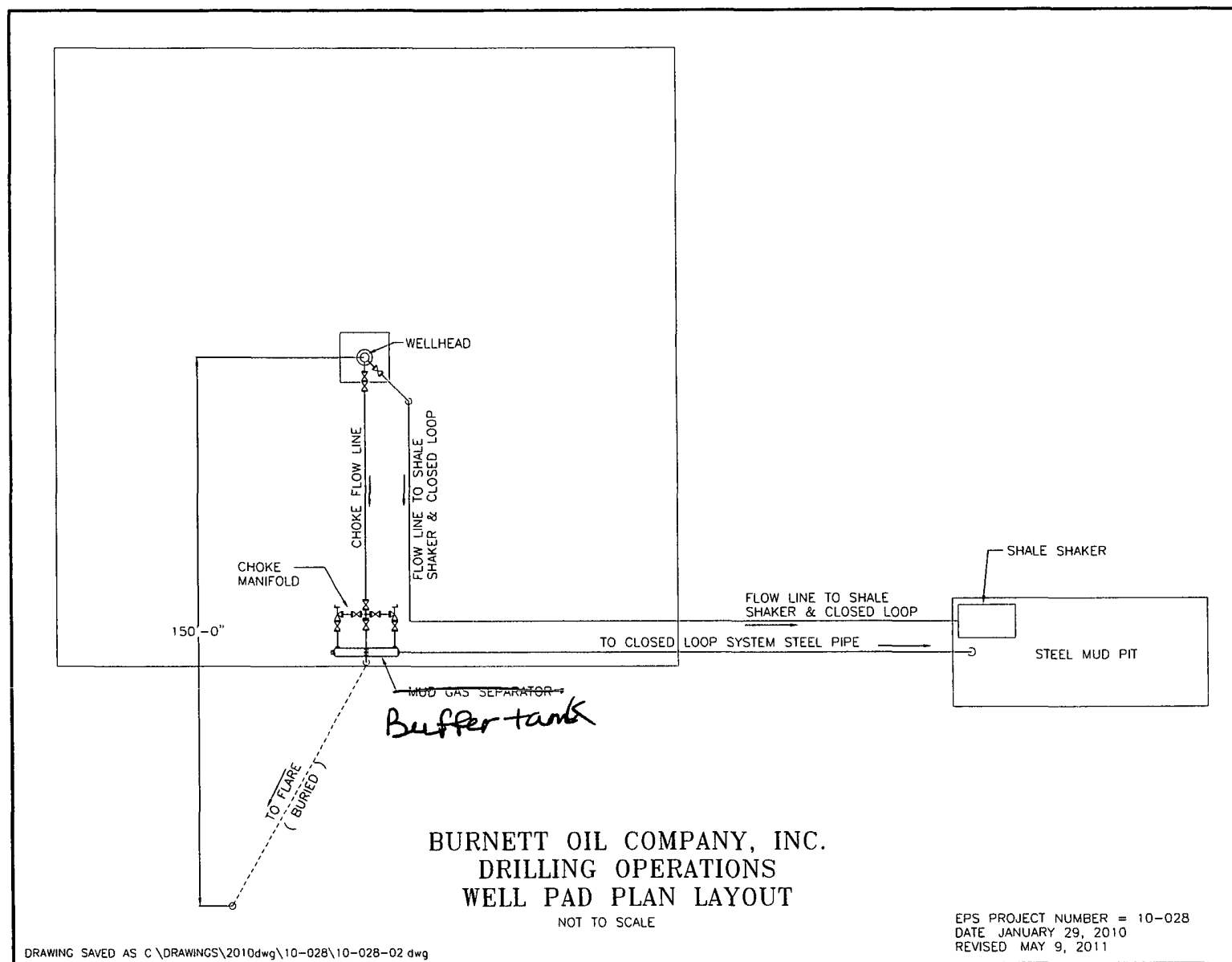
A FLOWLINE CROSSING USA LAND IN
SECTIONS 1&12, TOWNSHIP 17 SOUTH, RANGE 30 EAST,
N.M.P.M., EDDY COUNTY, NEW MEXICO.

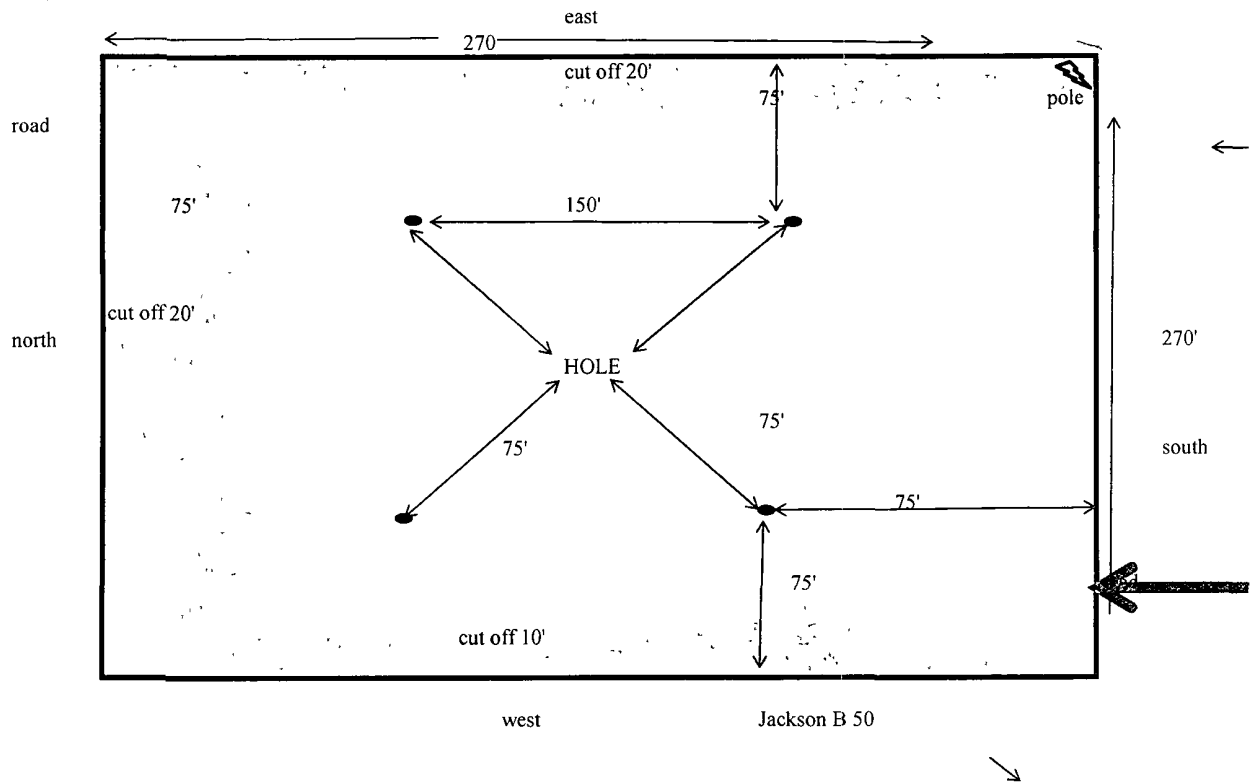
BASIN SURVEYS P.O. BOX 1786-HOBBS, NEW MEXICO

W.O. Number 24417 Drawn By J. M. SMALL

Date 06-13-2011 Disk JMS 24417

Survey Date 06-03-2011 Sheet 1 of 1 Sheets





Reclamation Plat
Exhibit P