

District I

1625 N. French Dr., Hobbs, NM 88240

District II

1301 W. Grand Avenue, Artesia, NM 88201

District III

1000 Rio Brazos Rd., Aztec, NM 87410

District IV

1220 S. St. Francis Dr., Santa Fe, NM 87505

State of New Mexico

Energy, Minerals & Natural Resources Department

OIL CONSERVATION DIVISION

1220 South St. Francis Dr.

Santa Fe, NM 87505

Form C-102

Revised October 15, 2009

Submit one copy to appropriate

District Office

☐ AMENDED REPORT

WELL LOCATION AND ACREAGE DEDICATION PLAT

¹ API Number 30-015-39373	² Pool Code 55510	³ Pool Name Scanlon Draw PARKWAY; BONE SPRING
⁴ Property Code 38568	⁵ Property Name ONYX PWU "29"	
⁶ OGRID No. 6137	⁷ Operator Name DEVON ENERGY PRODUCTION COMPANY, L.P.	
⁸ Well Number 3H		⁹ Elevation 3305.7

¹⁰ Surface Location



UL or lot no.	Section	Township	Range	Lot Idn	Feet from the	North/South line	Feet from the	East/West line	County
L	29	19 S	29 E		2145	SOUTH	330	WEST	EDDY

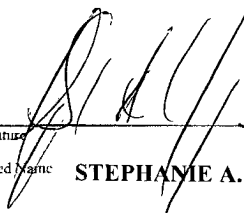
¹¹ Bottom Hole Location If Different From Surface

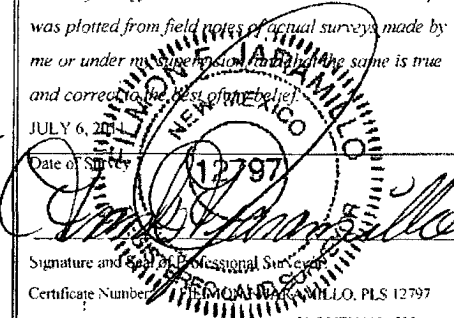
UL or lot no.	Section	Township	Range	Lot Idn	Feet from the	North/South line	Feet from the	East/West line	County
I	29	19 S	29 E		2145	SOUTH	330	EAST	EDDY

¹² Dedicated Acres 160	¹³ Joint or Infill	¹⁴ Consolidation Code	¹⁵ Order No.
---	-------------------------------	----------------------------------	-------------------------

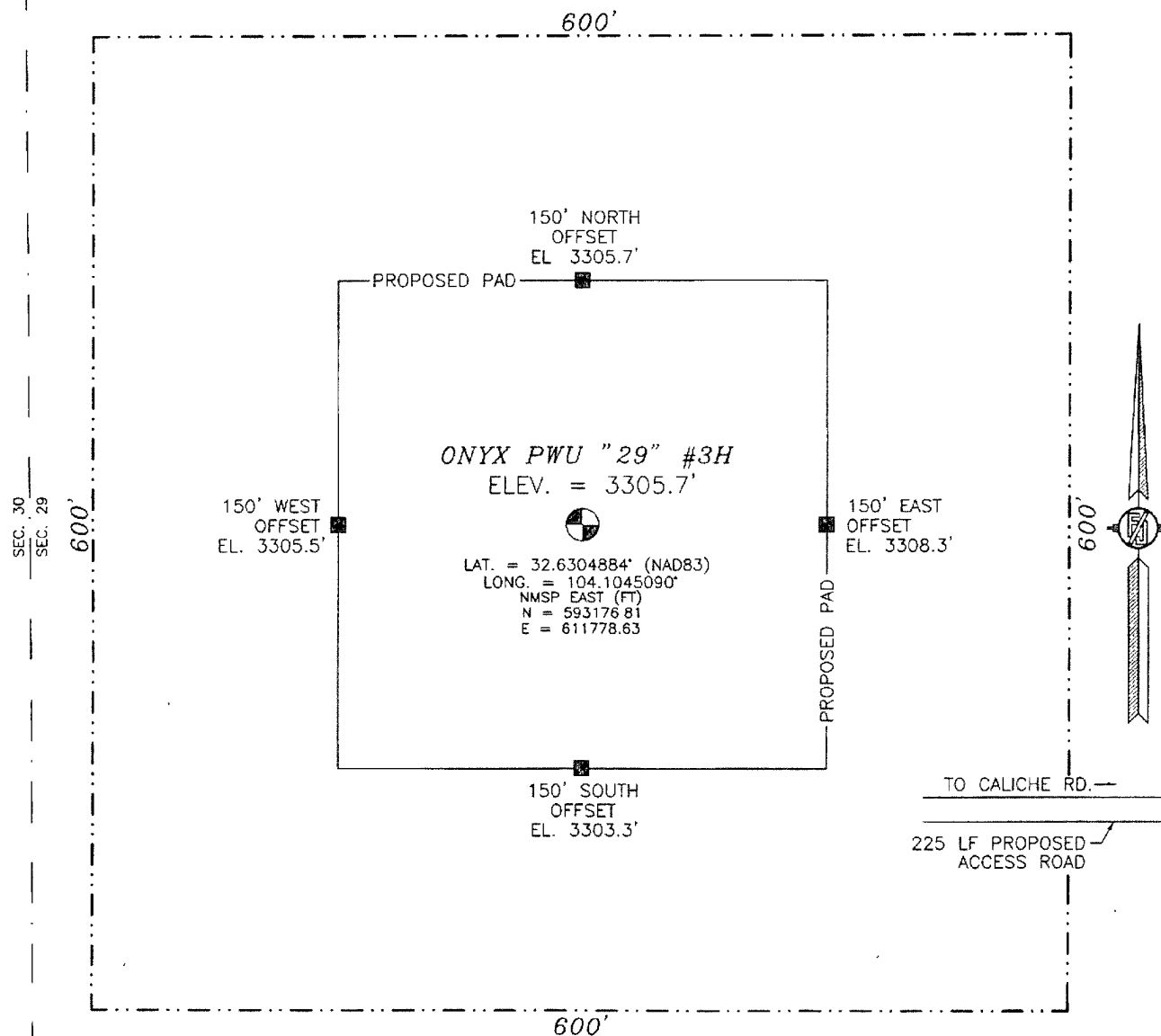
No allowable will be assigned to this completion until all interests have been consolidated or a non-standard unit has been approved by the division.

NW CORNER SEC. 29 LAT. = 32.639128' LONG. = 104.105599' NMSP EAST (FT) N = 596320.19 E = 611438.01		NE CORNER SEC. 29 LAT. = 32.639070' LONG. = 104.088393' NMSP EAST (FT) N = 596310.65 E = 616734.00	
PENETRATION POINT: 2145' FSL & 330' FWL			
 PRODUCING AREA		 PROJECT AREA	
ONYX PWU "29" #3H ELEV = 3305.7' LAT. = 32.6304884 (NAD83) LONG. = 104.1045092' NMSP EAST (FT) N = 593176.81 E = 611778.63		BOTTOM OF HOLE LAT. = 32.630444' LONG. = 104.089485' NMSP EAST (FT) N = 593171.20 E = 616408.44	
SURFACE LOCATION		BOTTOM OF HOLE	
SW CORNER SEC. 29 LAT. = 32.624596' LONG. = 104.105568' NMSP EAST (FT) N = 591032.08 E = 611457.20		SE CORNER SEC. 29 LAT. = 32.624547' LONG. = 104.088419' NMSP EAST (FT) N = 591025.80 E = 616737.99	

¹⁷ OPERATOR CERTIFICATION
 I hereby certify that the information contained herein is true and complete to the best of my knowledge and belief, and that this organization either owns a working interest or undivided mineral interest in the land including the proposed bottom hole location or has a right to drill this well at this location pursuant to a contract with an owner of such a mineral or working interest, or to a voluntary pooling agreement or a compulsory pooling order heretofore entered by the division.
 Signature:  Date: **8/9/11**
 Printed Name: **STEPHANIE A. YSASAGA**

¹⁸ SURVEYOR CERTIFICATION
 I hereby certify that the well location shown on this plat was plotted from field notes of actual surveys made by me or under my supervision and that the same is true and correct to the best of my belief.
 Date of Survey: **JULY 6, 2011**
 Signature and Seal of Professional Surveyor: 
 Certificate Number: **12797**
 SURVEY NO. 509

SECTION 29, TOWNSHIP 19 SOUTH, RANGE 29 EAST, N.M.P.M.
EDDY COUNTY, STATE OF NEW MEXICO



0 10 50 100 200
SCALE 1" = 100'

DIRECTIONS TO LOCATION
FROM CR #235 (CURRY COMB) AND CR #210 (OLD LOCO) GO NORTHWEST
ON CR #235 1.3 MILES, TURN LEFT ON CALICHE ROAD AND GO SOUTH
1.8 MILES, AND THE LOCATION IS ON THE RIGHT (WEST) 440'.

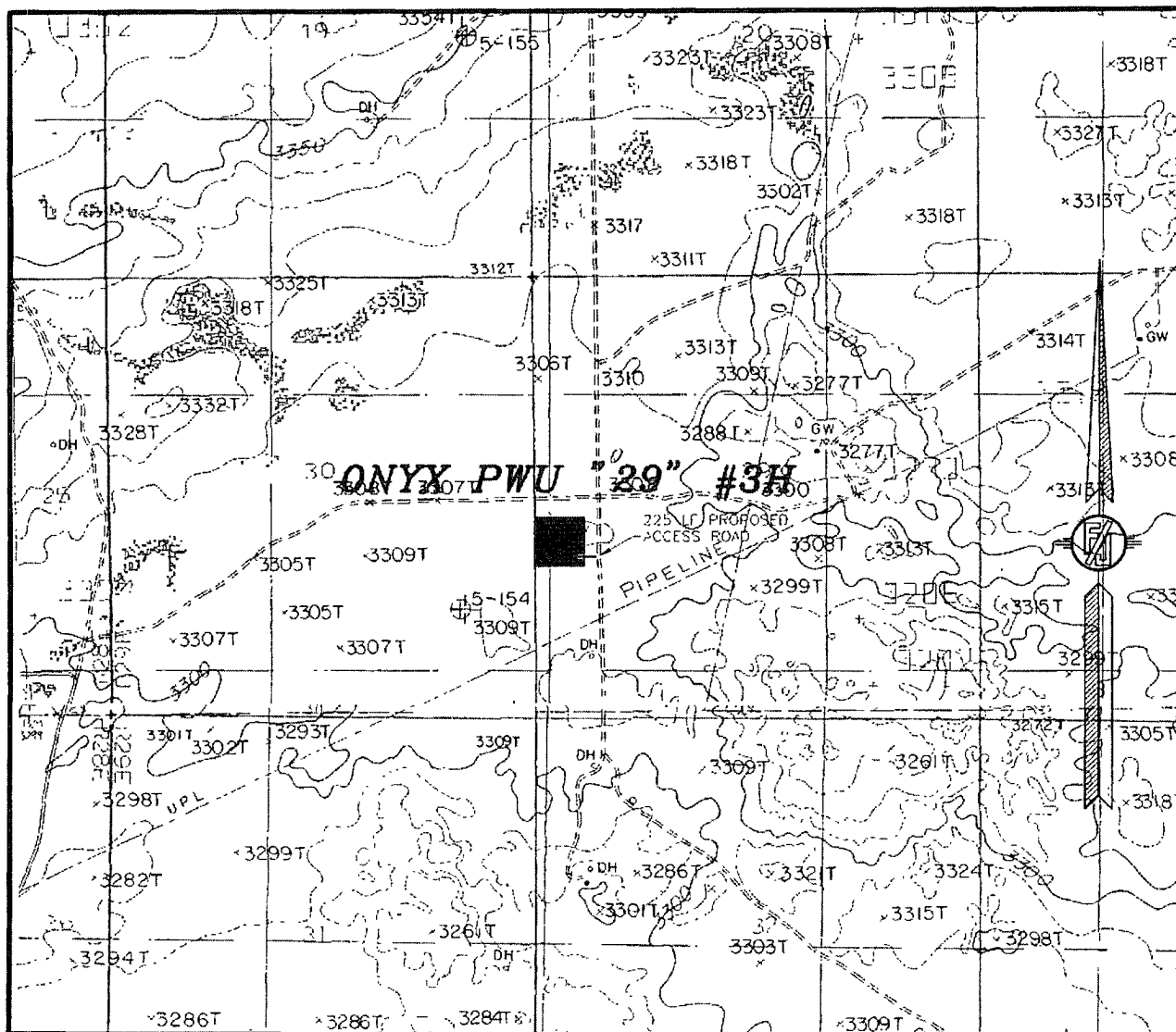
DEVON ENERGY PRODUCTION COMPANY, L.P.
ONYX PWU "29" #3H
LOCATED 2145 FT. FROM THE SOUTH LINE
AND 330 FT. FROM THE WEST LINE OF
SECTION 29, TOWNSHIP 19 SOUTH,
RANGE 29 EAST, N.M.P.M.
EDDY COUNTY, STATE OF NEW MEXICO

SURVEY NO. 509

JULY 6, 2011

MADRON SURVEYING, INC. 301 SOUTH CARLISB AD, NEW MEXICO

SECTION 29, TOWNSHIP 19 SOUTH, RANGE 29 EAST, N.M.P.M.
EDDY COUNTY, STATE OF NEW MEXICO
LOCATION VERIFICATION MAP



CONTOUR INTERVAL:
ILLINOIS CAMP NE, NM
ILLINOIS CAMP SE, NM

NOT TO SCALE

DEVON ENERGY PRODUCTION COMPANY, L.P.

ONYX PWU "29" #3H

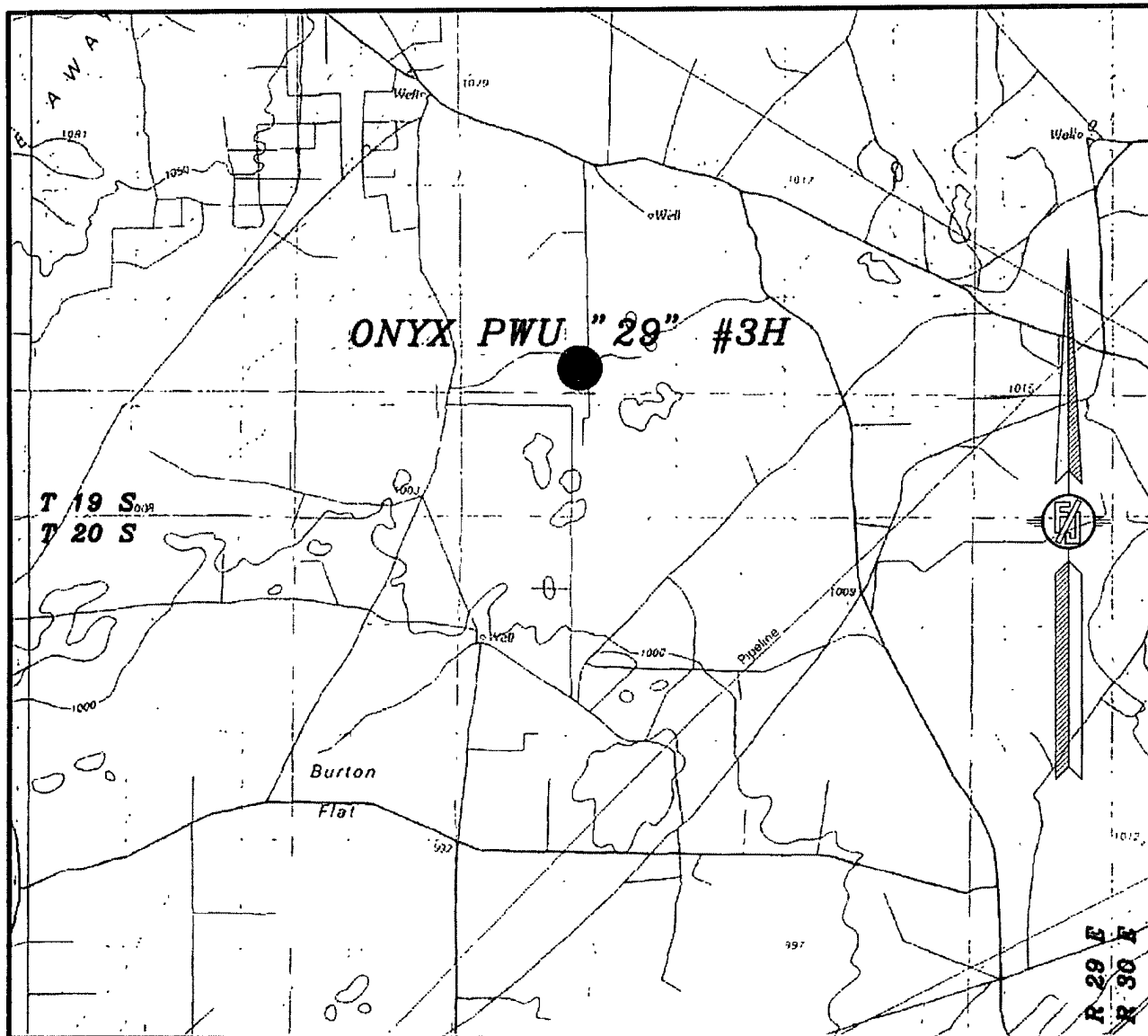
LOCATED 2145 FT. FROM THE SOUTH LINE
AND 330 FT. FROM THE WEST LINE OF
SECTION 29, TOWNSHIP 19 SOUTH,
RANGE 29 EAST, N.M.P.M.
EDDY COUNTY, STATE OF NEW MEXICO

JULY 6, 2011

SURVEY NO. 509

MADRON SURVEYING, INC. 301 SOUTH CANAL CARLSBAD, NEW MEXICO
(575) 705-9672

SECTION 29, TOWNSHIP 19 SOUTH, RANGE 29 EAST, N.M.P.M.
EDDY COUNTY, STATE OF NEW MEXICO
VICINITY MAP



NOT TO SCALE

DEVON ENERGY PRODUCTION COMPANY, L.P.

ONYX PWU "29" #3H

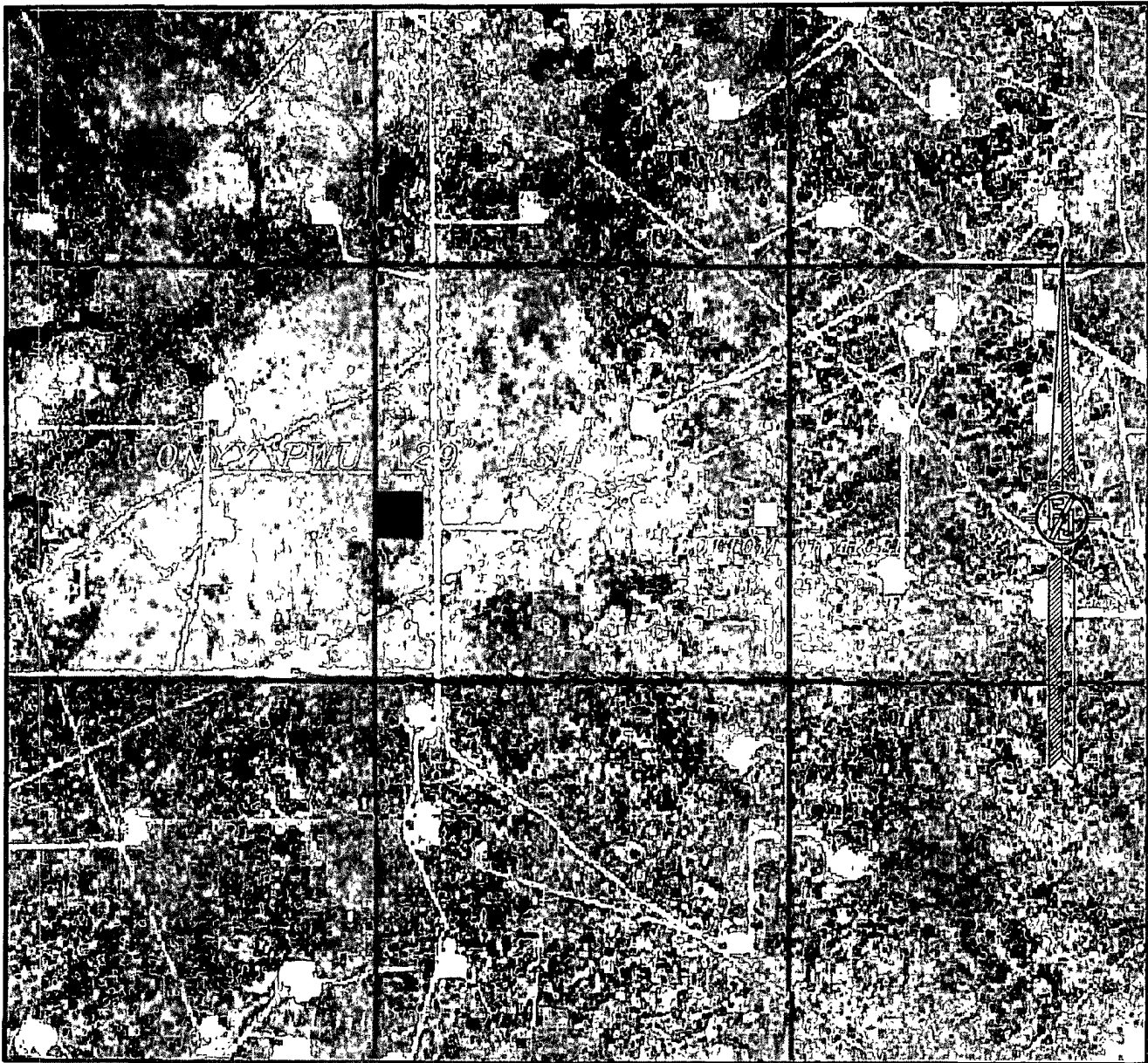
LOCATED 2145 FT. FROM THE SOUTH LINE
AND 330 FT. FROM THE WEST LINE OF
SECTION 29, TOWNSHIP 19 SOUTH,
RANGE 29 EAST, N.M.P.M.
EDDY COUNTY, STATE OF NEW MEXICO

JULY 6, 2011

SURVEY NO. 509

MADRON SURVEYING, INC. 301 SOUTH CANAL CARLSBAD, NEW MEXICO
(575) 706-9672

SECTION 29, TOWNSHIP 19 SOUTH, RANGE 29 EAST, N.M.P.M.
EDDY COUNTY, STATE OF NEW MEXICO
AERIAL PHOTO



NOT TO SCALE
AERIAL PHOTO:
GOOGLE EARTH
USDA-AUG, 2009

DEVON ENERGY PRODUCTION COMPANY, L.P.

ONYX PWU "29" #3H

LOCATED 2145 FT. FROM THE SOUTH LINE
AND 330 FT. FROM THE WEST LINE OF
SECTION 29, TOWNSHIP 19 SOUTH,
RANGE 29 EAST, N.M.P.M.
EDDY COUNTY, STATE OF NEW MEXICO

SURVEY NO. 509

JULY 6, 2011

MADRON SURVEYING, INC. 301 SOUTH CANAL CARLSBAD, NEW MEXICO
(575) 706-9672