

DISTRICT I
1625 N. French Dr. Hobbs, NM 88240

DISTRICT II
1901 W. Grand Avenue, Artesia, NM 88210

DISTRICT III
1000 Rio Brazos Rd., Aztec, NM 87410

DISTRICT IV
1220 S. St. Francis Dr., Santa Fe, NM 87505

State of New Mexico
Energy, Minerals and Natural Resources Department

Form C-102
Revised July 16, 2010

Submit one copy to appropriate
District Office

OIL CONSERVATION DIVISION
1220 South St. Francis Dr.
Santa Fe, New Mexico 87505

WELL LOCATION AND ACREAGE DEDICATION PLAT

☐ AMENDED REPORT

API Number 30-015-39385	Pool Code 11795 97965	N. SEVEN RIVER, GLORIETA-YESO Cometary (Yeso)
Property Code 18248	Property Name GOSSETT "20"	Well Number 4H
OGRID No. 151416	Operator Name FASKEN OIL AND RANCH, LTD	Elevation 3503'

Surface Location

UL or lot No.	Section	Township	Range	Lot Idn	Feet from the	North/South line	Feet from the	East/West line	County
P	20	20 S	25 E		930	SOUTH	150	EAST	EDDY

Bottom Hole Location If Different From Surface

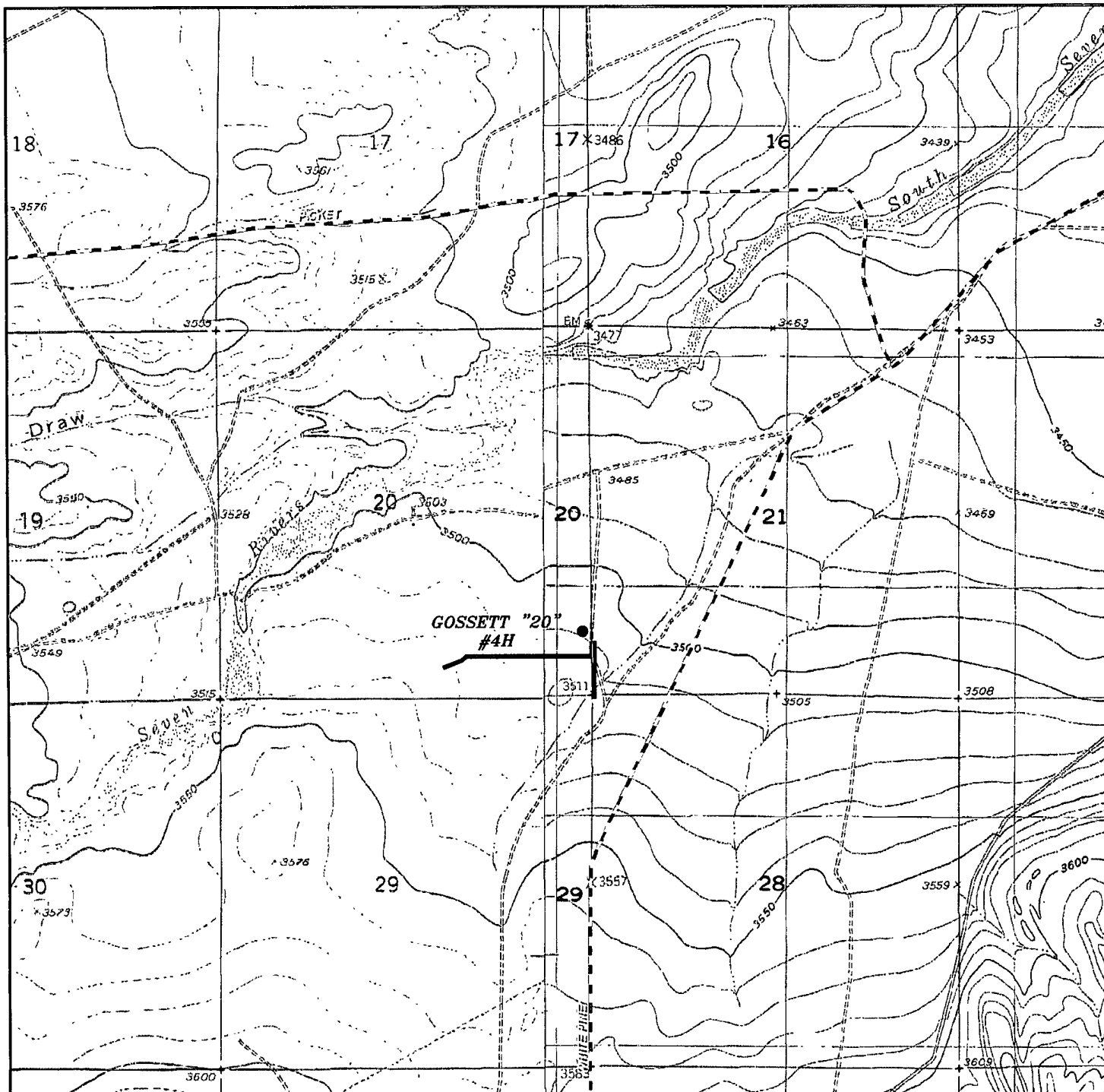
UL or lot No.	Section	Township	Range	Lot Idn	Feet from the	North/South line	Feet from the	East/West line	County
M	20	20 S	25 E		930	SOUTH	380	WEST	EDDY

Dedicated Acres 160	Joint or Infill	Consolidation Code	Order No.
-------------------------------	-----------------	--------------------	-----------

NO ALLOWABLE WILL BE ASSIGNED TO THIS COMPLETION UNTIL ALL INTERESTS HAVE BEEN CONSOLIDATED
OR A NON-STANDARD UNIT HAS BEEN APPROVED BY THE DIVISION

<p>PROPOSED BOTTOM HOLE LOCATION Lat - N 32°33'15.97" Long - W 104°30'51.44" NMSPC- N 565482.381 E 485583.330 (NAD-83)</p>	<p>SURFACE LOCATION Lot - N 32°33'16.04" Long - W 104°29'55.40" NMSPC- N 565473.959 E 490378.470 (NAD-83)</p>	<p>OPERATOR CERTIFICATION I hereby certify that the information contained herein is true and complete to the best of my knowledge and belief, and that this organization either owns a working interest or unleased mineral interest in the land including the proposed bottom hole location or has a right to drill this well at this location pursuant to a contract with an owner of such a mineral or working interest, or to a voluntary pooling agreement or a compulsory pooling order heretofore entered by the division.</p> <p><i>Kim Tyson</i> 9-2-2011 Signature Date</p> <p>Kim Tyson Printed Name kimt@forl.com Email Address</p>
		<p>SURVEYOR CERTIFICATION I hereby certify that the well location shown on this plat was plotted from field notes of actual surveys made by me or under my supervision and that the same is true and correct to the best of my belief</p> <p>MAR 24 2011 GARY L. JONES NEW MEXICO Professional Surveyor Date Surveyed Signature & Seal of Professional Surveyor W.O. 17924883</p> <p>Certificate No. Gary L. Jones 7977 BASIN SURVEYS 24359</p>

Penetration Point - 930' FSL & 710' FEL, 3032' MD, 2708' TVD



GOSSETT "20" #4H
 Located 930' FSL and 150' FEL
 Section 20, Township 20 South, Range 25 East,
 N.M.P.M., Eddy County, New Mexico.

basin
surveys
 focused on excellence
 in the oilfield

P.O. Box 1786
 1120 N. West County Rd.
 Hobbs, New Mexico 88241
 (575) 393-7316 - Office
 (575) 392-2206 - Fax
 basinsurveys.com

W.O. Number: JMS 24359

Survey Date: 03-24-2010

Scale: 1" = 2000'

Date: 04-07-2010

FASKEN OIL
AND RANCH,
LTD

DISTRICT I
1625 N. French Dr., Hobbs, NM 88240
DISTRICT II
1301 W. Grand Avenue, Artesia, NM 88210
DISTRICT III
1000 Rio Brazos Rd., Aztec, NM 87410
DISTRICT IV
1220 S. St. Francis Dr., Santa Fe, NM 87505

State of New Mexico
Energy, Minerals and Natural Resources Department

Form C-102
Revised July 16, 2010

Submit one copy to appropriate
District Office

OIL CONSERVATION DIVISION
1220 South St. Francis Dr.
Santa Fe, New Mexico 87505

WELL LOCATION AND ACREAGE DEDICATION PLAT

☐ AMENDED REPORT

API Number 30-015-	Pool Code 11795 97565	Pool Name N. SEVEN RIVERS CLOVEA-YEHO Cemetery (Yeso)
Property Code 18248	Property Name GOSSETT "20"	Well Number 4H
OGRID No. 151416	Operator Name FASKEN OIL AND RANCH, LTD	Elevation 3503'

Surface Location

UL or lot No.	Section	Township	Range	Lot Idn	Feet from the	North/South line	Feet from the	East/West line	County
P	20	20 S	25 E		930	SOUTH	150	EAST	EDDY

Bottom Hole Location If Different From Surface

UL or lot No.	Section	Township	Range	Lot Idn	Feet from the	North/South line	Feet from the	East/West line	County
M	20	20 S	25 E		930	SOUTH	380	WEST	EDDY
Dedicated Acres	Joint or Infill	Consolidation Code	Order No.						

NO ALLOWABLE WILL BE ASSIGNED TO THIS COMPLETION UNTIL ALL INTERESTS HAVE BEEN CONSOLIDATED
OR A NON-STANDARD UNIT HAS BEEN APPROVED BY THE DIVISION

<p>PROPOSED BOTTOM HOLE LOCATION Lat - N 32°33'15.97" Long - W 104°30'51.44" NMSPCE- N 565482.381 E 485583.330 (NAD-83)</p>	<p>SURFACE LOCATION Lat - N 32°33'16.04" Long - W 104°29'55.40" NMSPCE- N 565473.959 E 490378.470 (NAD-83)</p>	<p>OPERATOR CERTIFICATION I hereby certify that the information contained herein is true and complete to the best of my knowledge and belief, and that this organization either owns a working interest or unleased mineral interest in the land including the proposed bottom hole location or has a right to drill this well at this location pursuant to a contract with an owner of such a mineral or working interest, or to a voluntary pooling agreement or a compulsory pooling order heretofore entered by the division. Kim Tyson 8-26-2011 Signature Date Kim Tyson Printed Name kimt@forl.com Email Address</p>
<p>RECEIVED AUG 29 2011 NMOCD ARTESIA</p>		<p>SURVEYOR CERTIFICATION I hereby certify that the well location shown on this plat was plotted from field notes of actual surveys made by me or under my supervision, and that the same is true and correct to the best of my belief. GARY L. JONES Date Surveyed Signature & Seal of Professional Surveyor W.O. JONES Certificate No. Gary L. Jones 7977 BASIN SURVEYS 24359</p>