

30-015 39419

# Surface Use & Operating Plan

## Dodd Federal Unit #534

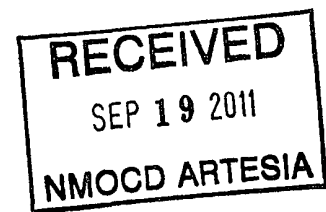
- Surface Tenant: Bogle Farms, Lewis Derrick, P O Box 441, Artesia, NM 88211.
- New Road: approx. 101'
- Flow Line: approx. 100'
- Facilities: Dodd 10-A Federal Tank Battery

### Well Site Information

V Door: East

Topsoil: West

Interim Reclamation: West/North



### Notes

-Dodd 10-A Federal Tank Battery to be built onsite extending south.

**Onsite:** 3/8/2011

John Fast (BLM), Chris Moon (COG), Caden Jameson (COG), Gary Box (J.W.S)

## **SURFACE USE AND OPERATING PLAN**

### **1. Existing & Proposed Access Roads**

- A. The well site survey and elevation plat for the proposed well is shown in Exhibit #1. It was staked by John West Engineering, Hobbs, NM.
- B. All roads to the location are shown in the topographic map Exhibit #2. The existing lease roads are illustrated and are adequate for travel during drilling and production operations. Upgrading existing roads prior to drilling the well will be done where necessary.
- C. Directions to location: From the intersection US Highway 82 and Co. Rd. 214 (Barnaval Draw), go northwest on Co. Rd. #214 approx. 1.5 miles. Turn right and go east approx. 0.5 miles. Turn left and go north approx. 0.6 miles. The location stake is approx. 275 feet east of two track road. See Vicinity Map, Exhibit #3.
- D. Routine grading and maintenance of existing roads will be conducted as necessary to maintain their condition as long as any operations continue on this lease. Roads will be maintained according to specifications in section 2A of this Surface Use and Operating Plan.

### **2. Proposed Access Road:**

Exhibit #4 shows that 101' of new access road will be required for this location. If any road is required it will be constructed as follows:

- A. The maximum width of the running surface will be 14'. The road will be crowned, ditched and constructed of 6" rolled and compacted caliche. Ditches will be at 3:1 slope and 4 feet wide. Water will be diverted where necessary to avoid ponding, prevent erosion, maintain good drainage, and to be consistent with local drainage patterns.
- B. The average grade will be less than 1%.
- C. No turnouts are planned.
- D. No culverts, cattleguard, gates, low water crossings or fence cuts are necessary.

- E. Surfacing material will consist of native caliche. Caliche will be obtained from the actual well site if available. If not available onsite, caliche will be hauled from the nearest BLM caliche pit.

**3. Location of Existing Well:**

Exhibit #5 shows all existing wells within a one-mile radius of this well.

As shown on this plat there are numerous wells producing from the San Andres and Yeso formations.

**4. Location of Existing and/or Proposed Facilities:**

- A. COG Operating LLC does operate a production facility on this lease.
- B. If the well is productive, contemplated facilities will be as follows:
- 1) Production will be sent to the Dodd 10-A Federal Tank Battery to be located in Section 10 at the Dodd Federal Unit #534 well location. The facility location is shown in Exhibit #5.
  - 2) The tank battery and facilities including all flow lines and piping will be installed according to API specifications.
  - 3) Any additional caliche will be obtained from the actual well site. If caliche does not exist or is not plentiful from the well site, the caliche will be hauled from a BLM approved caliche pit. Any additional construction materials will be purchased from contractors.
  - 4) Proposed flow lines, will follow an archaeologically approved route to the Dodd 10-A Federal Tank Battery to be located in Section 10 at the Dodd Federal Unit #534 well location. The flowline will be SDR 7 3" poly line laid on the surface and will be approximately 0.2 miles in length.
  - 5) It will be necessary to run electric power if this well is productive. Power will be provided by CVE and they will submit a separate plan and ROW for service to the well location.
  - 6) If the well is productive, rehabilitation plans will include the following:
    - a) The original topsoil from the well site will be returned to the location, and the site will be re-contoured as close as possible to the original site.

10A  
Battery  
JDF 7-27

**5. Location and Type of Water Supply:**

The well will be drilled with combination brine and fresh water mud system as outlined in the drilling program. The water will be obtained from commercial water stations in the area and hauled to location by transport truck over the existing and proposed access roads shown in Exhibit #2. If a commercial fresh water source is nearby, fast line may be laid along existing road ROW's and fresh water pumped to the well. No water well will be drilled on the location.

**6. Source of Construction Materials and Location "Turn-Over" Procedure:**

Obtaining caliche: The primary way of obtaining caliche to build locations and roads will be by "turning over" the location. This means, caliche will be obtained from the actual well sight. A caliche permit will be obtained from BLM prior to pushing up any caliche. 2400 cu. Yards is max amount of caliche needed for pad and roads. Amount will vary for each pad. The procedure below has been approved by BLM personnel:

- A. The top 6 inches of topsoil is pushed off and stockpiled along the side of the location.**
- B. An approximate 120' X 120' area is used within the proposed well site to remove caliche.**
- C. Subsoil is removed and piled alongside the 120' by 120' area within the pad site.**
- D. When caliche is found, material will be stock piled within the pad site to build the location and road.**
- E. Then subsoil is pushed back in the hole and caliche is spread accordingly across entire location and road.**
- F. Once well is drilled, the stock piled top soil will be used for interim reclamation and spread along areas where caliche is picked up and the location size is reduced. Neither caliche or subsoil will be stock piled outside of the well pad. Topsoil will be stockpiled along the edge of the pad as depicted in attached plat.**

In the event that no caliche is found onsite, caliche will be hauled in from a BLM approved caliche pit.

**7. Methods of Handling Water Disposal:**

- A. The well will be drilled utilizing a closed loop mud system. Drill cuttings will be held in roll-off style mud boxes and taken to an NMOCD approved disposal site.
- B. Drilling fluids will be contained in steel mud pits.
- C. Water produced from the well during completion will be held temporarily in steel tanks and then taken to an NMOCD approved commercial disposal facility.
- D. Garbage and trash produced during drilling or completion operations will be collected in a trash bin and hauled to an approved landfill. No toxic waste or hazardous chemicals will be produced by this operation.
- E. After the rig is moved out and the well is either completed or abandoned, all waste materials will be cleaned up within 30 days. In the event of a dry hole only a dry hole marker will remain.

**8. Ancillary Facilities:**

No airstrip, campsite or other facilities will be built as a result of the operation on this well.

**9. Well Site Layout:**

- A. The drill pad layout, with elevations staked by John West Engineering, is shown in Exhibit #4. Dimensions of the pad and pits are shown on Exhibit #6. V door direction is East. Topsoil, if available, will be stockpiled per BLM specifications. Because the pad is almost level no major cuts will be required.
- B. Exhibit #6 also shows the proposed orientation of closed loop system and access road. No permanent living facilities are planned, but a temporary foreman/toolpusher's trailer will be on location during the drilling operations.

**10. Plans for Restoration of the Surface:**

- A. Interim Reclamation will take place after the well has been completed. The pad will be downsized by reclaiming the areas not needed for production operations. The portions of the pad that are not needed for production operations will be re-contoured to its original state as much as possible. The caliche that is removed will be reused to either build

**13.      Bond Coverage:**

Bond Coverage is Nationwide Bond # 000215

**14. Lessee's and Operator's Representative:**

The COG Operating LLC representative responsible for assuring compliance with the surface use plan is as follows:

John Coffman,

Drilling Superintendent

COG Operating LLC

550 W. Texas, Suite 1300

Midland, TX 79701

Phone (432) 683-7443 (office)

(432) 631-9762 (cell)

Erick Nelson.

Division Operations Manager

COG Operating LLC

550 W. Texas, Suite 1300

Midland, TX 79701

Phone (505) 746-2210 (office)

(432) 238-7591 (cell)

I hereby certify that I, or persons under my direct supervision, have inspected the drill site and access road proposed herein; that I am familiar with the conditions that presently exist; that I have full knowledge of State and Federal laws applicable to this operation; that the statements make in this APD package are, to the best of my knowledge, true and correct; and that the work associated with the operations proposed herein will be performed in conformity with this APD package and the terms and conditions under which it is approved. I also certify that I, or COG Operating, LLC, am responsible for the operations conducted under this application. These statements are subject to the provisions of 18 U.S.C. 1001 for the filing of false statements. Executed this 4th day of April, 2011.

Signed: Carl Bird

Printed Name: Carl Bird

Position: Drilling Engineer

Address: 550 W. Texas, Suite 1300, Midland, Texas 79701

Telephone: (432) 683-7443

Field Representative (if not above signatory): Same

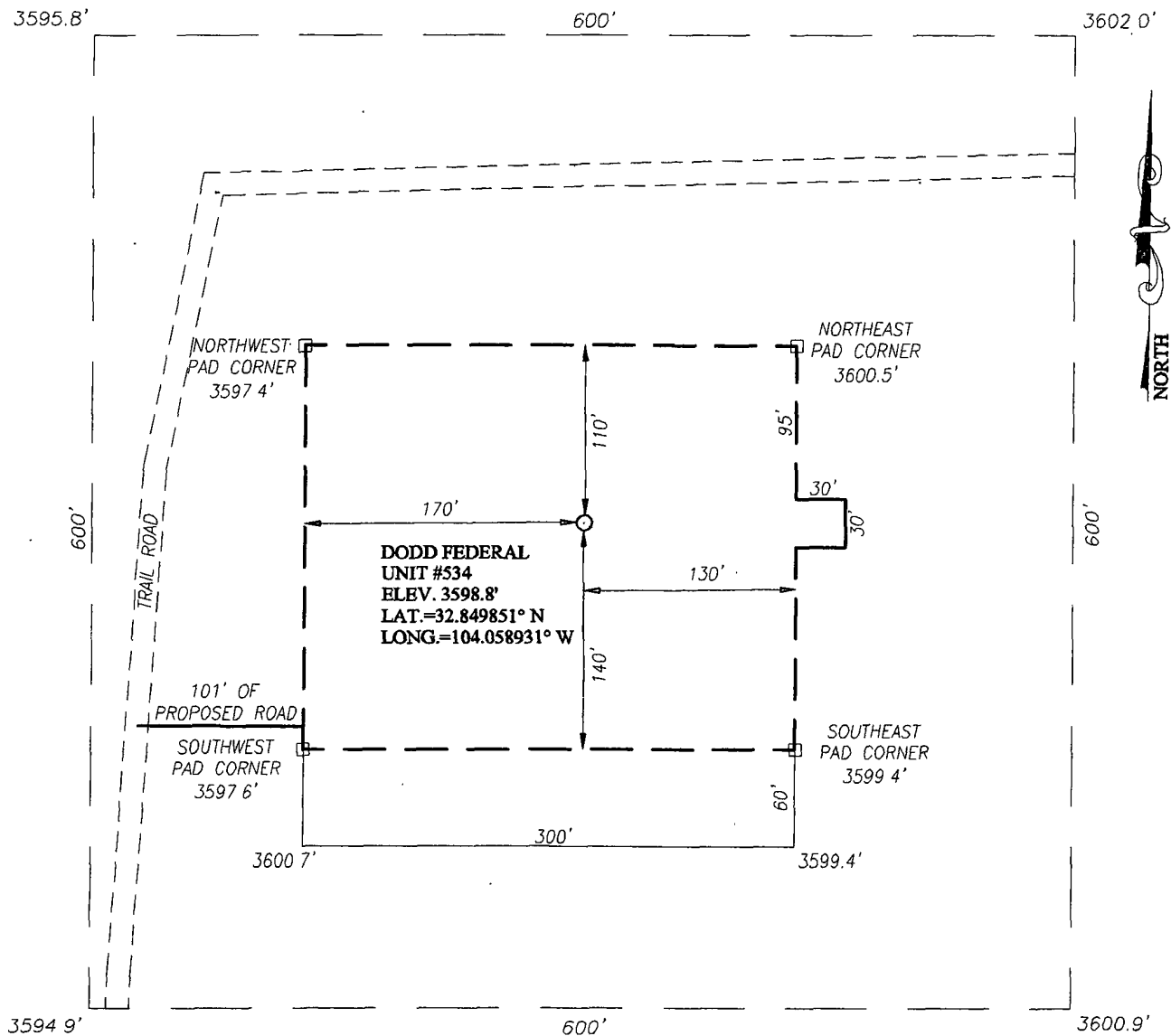
E-mail: [cbird@conchoresources.com](mailto:cbird@conchoresources.com)

**Exhibits:**

- Exhibit #1    Wellsite and Elevation Plat**  
**Form C-102 Well location and acreage dedication plat**
- Exhibit #2    Topographic Map (West)**
- Exhibit #3    Vicinity Map and area roads**
- Exhibit #4    Elevation Plat (West)**
- Exhibit #5    Topographic extract showing wells, roads and flowlines**
- Exhibit #6    Pad Layout and orientation**
- Exhibit #7    H2S Signage**
- Exhibit #8    H2S Equipment location**
- Exhibit #9    BOP and Choke diagrams**
- Exhibit #10   Form C-144 NMOCD pit permit application**
- Exhibit #11   1 Mile Radius List and Map showing all wells permitted,  
producing and plugged**

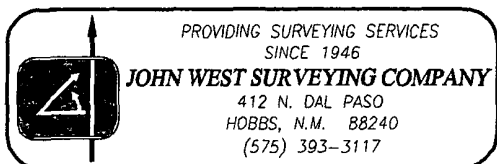
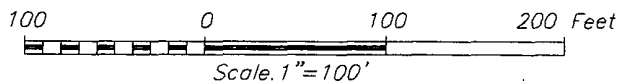


SECTION 10, TOWNSHIP 17 SOUTH, RANGE 29 EAST, N.M.P.M.  
EDDY COUNTY NEW MEXICO



DIRECTIONS TO LOCATION

FROM THE INTERSECTION OF U.S HWY #82 AND CO RD. #214 (BARNAVAL DRAW), GO NORTHWEST ON CO. RD #214 APPROX. 1.5 MILES. TURN RIGHT AND GO EAST APPROX. 0.5 MILES. TURN LEFT AND GO NORTH APPROX. 0.6 MILES THE LOCATION STAKE IS APPROX. 275 FEET EAST OF TWO TRACK ROAD.

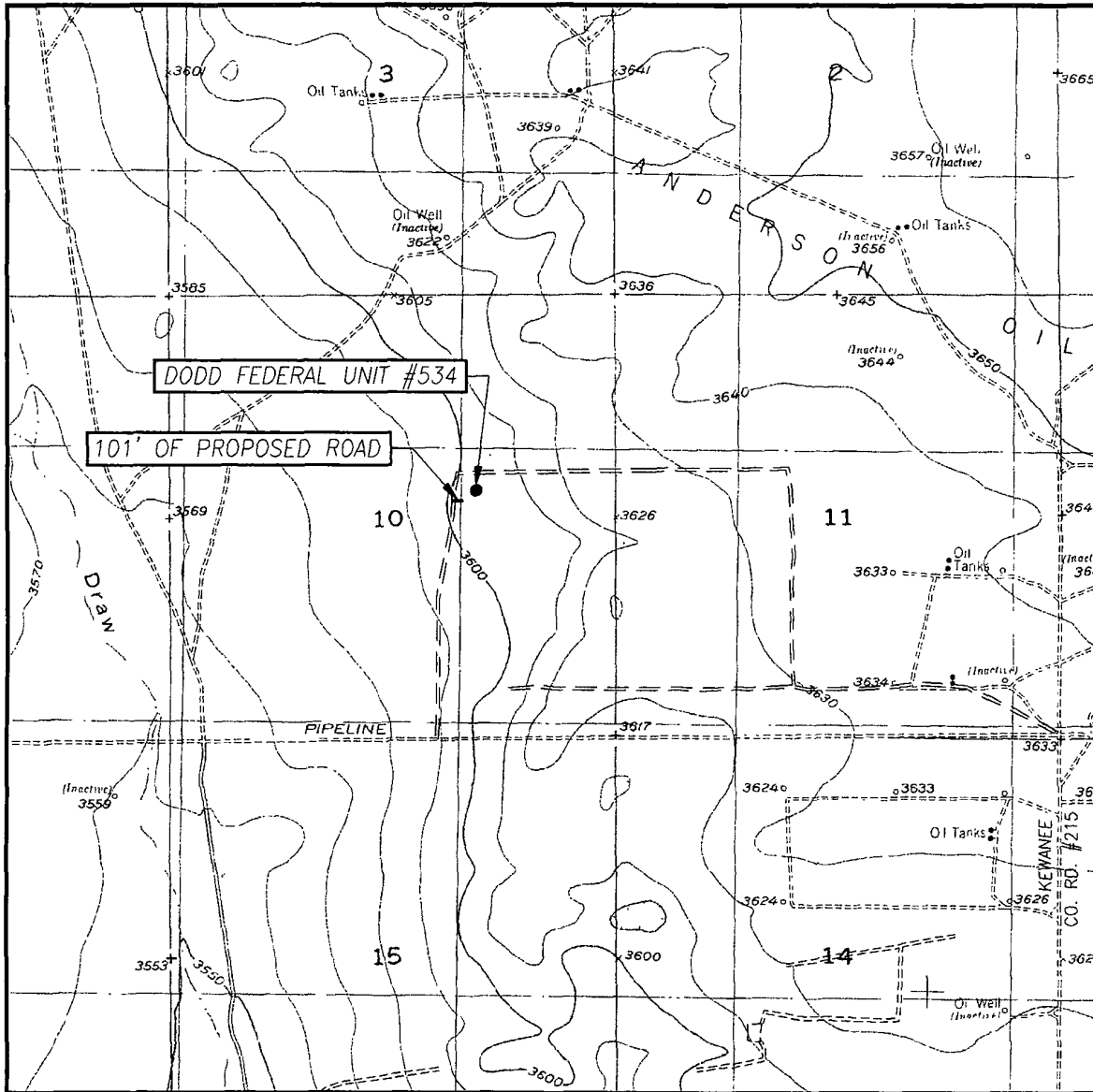


COG OPERATING, LLC

DODD FEDERAL UNIT #534 WELL  
LOCATED 2330 FEET FROM THE NORTH LINE  
AND 1650 FEET FROM THE EAST LINE OF SECTION 10,  
TOWNSHIP 17 SOUTH, RANGE 29 EAST, N.M.P.M.,  
EDDY COUNTY, NEW MEXICO

Survey Date.	4/14/11	Sheet	1	of	1	Sheets
W.O. Number:	11.11.0111	Dr By:	LA	Rev	1:	N/A
Date:	4/21/11	Rel. W.O.:		11110111	Scale:	1"=100'

# LOCATION VERIFICATION MAP



SCALE: 1" = 2000'

CONTOUR INTERVAL:  
RED LAKE SE, N.M. - 10'

SEC. 10 TWP 17-S RGE. 29-E

SURVEY N.M.P.M.

COUNTY EDDY STATE NEW MEXICO

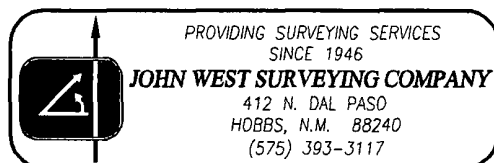
DESCRIPTION 2330' FNL & 1650' FEL

ELEVATION 3599'

OPERATOR COG OPERATING, INC.

LEASE DODD FEDERAL UNIT

U.S.G.S. TOPOGRAPHIC MAP  
RED LAKE SE, N.M.



## VICINITY MAP



SCALE: 1" = 2 MILES

SEC. 10 TWP. 17-S RGE. 29-E

SURVEY N.M.P.M.

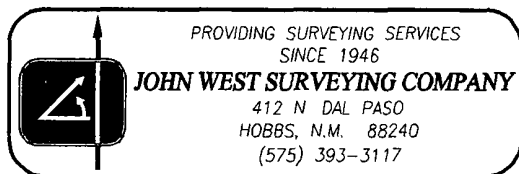
COUNTY EDDY STATE NEW MEXICO

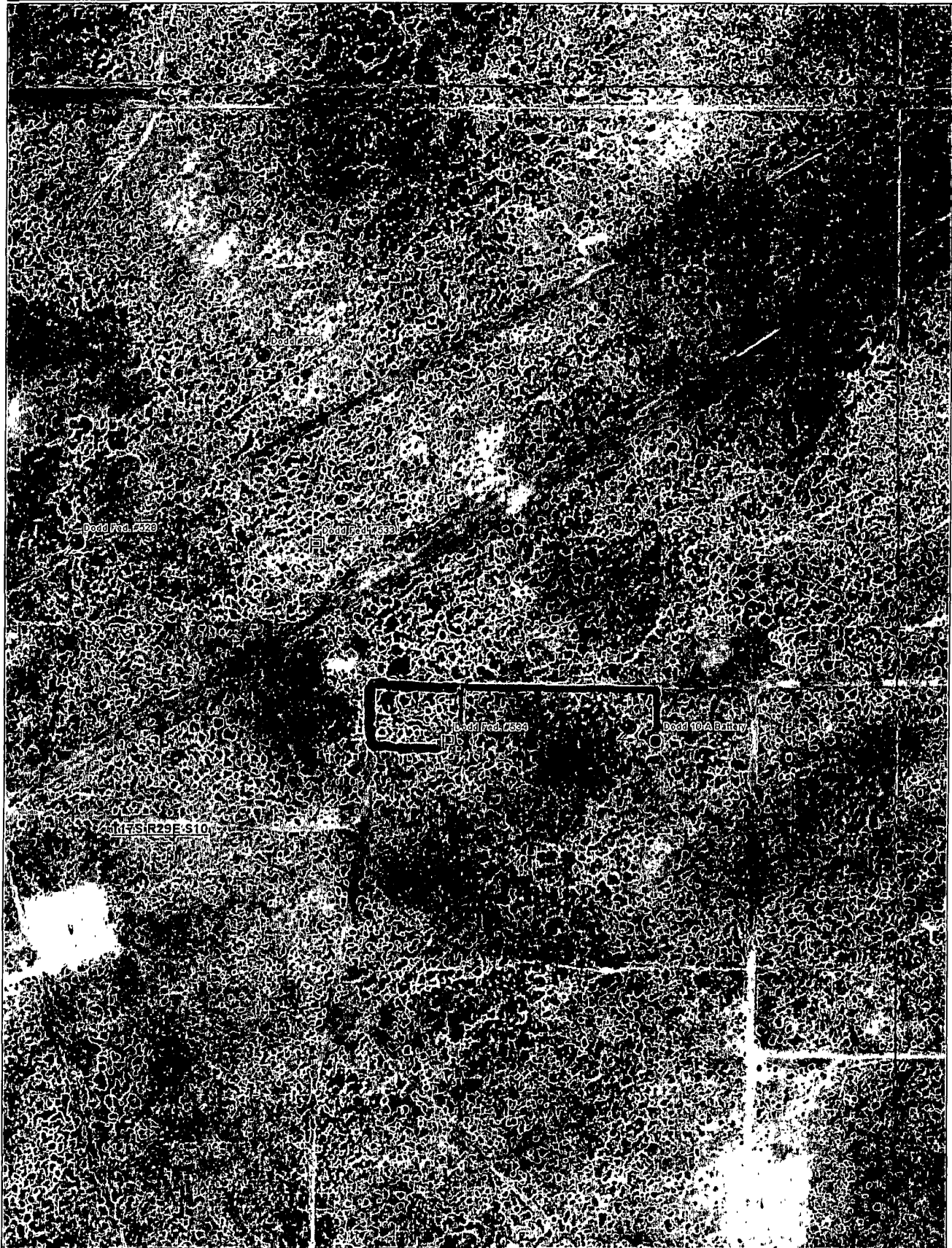
DESCRIPTION 2330' FNL & 1650' FEL

ELEVATION 3599'

OPERATOR COG OPERATING, LLC

LEASE DODD FEDERAL UNIT

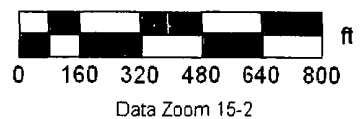


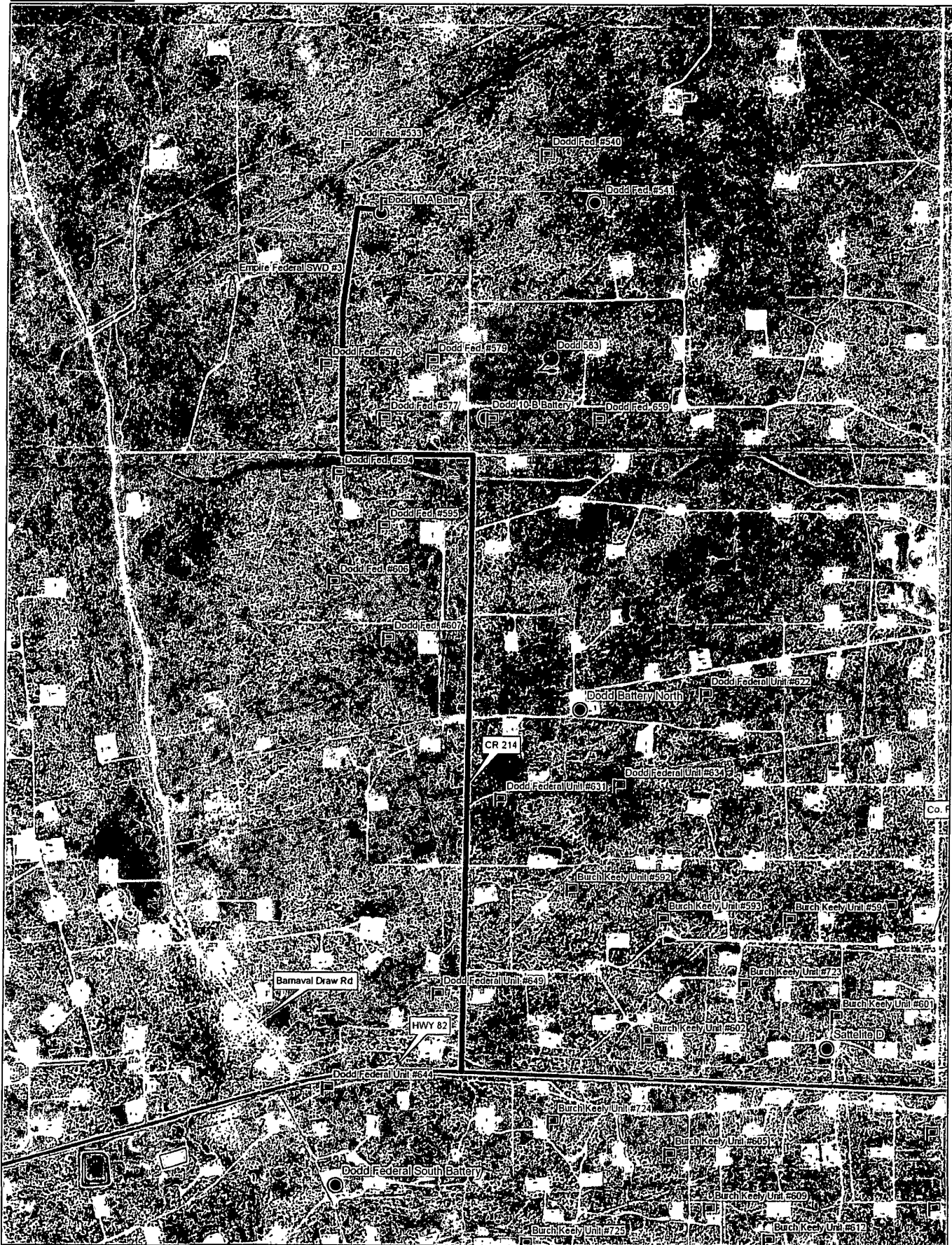


Data use subject to license

© DeLorme XMap® 7.

www.delorme.com





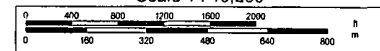
Data use subject to license.

© DeLorme. XMap® 7.

www.delorme.com



Scale 1 : 19,200



1" = 1,600.0 ft

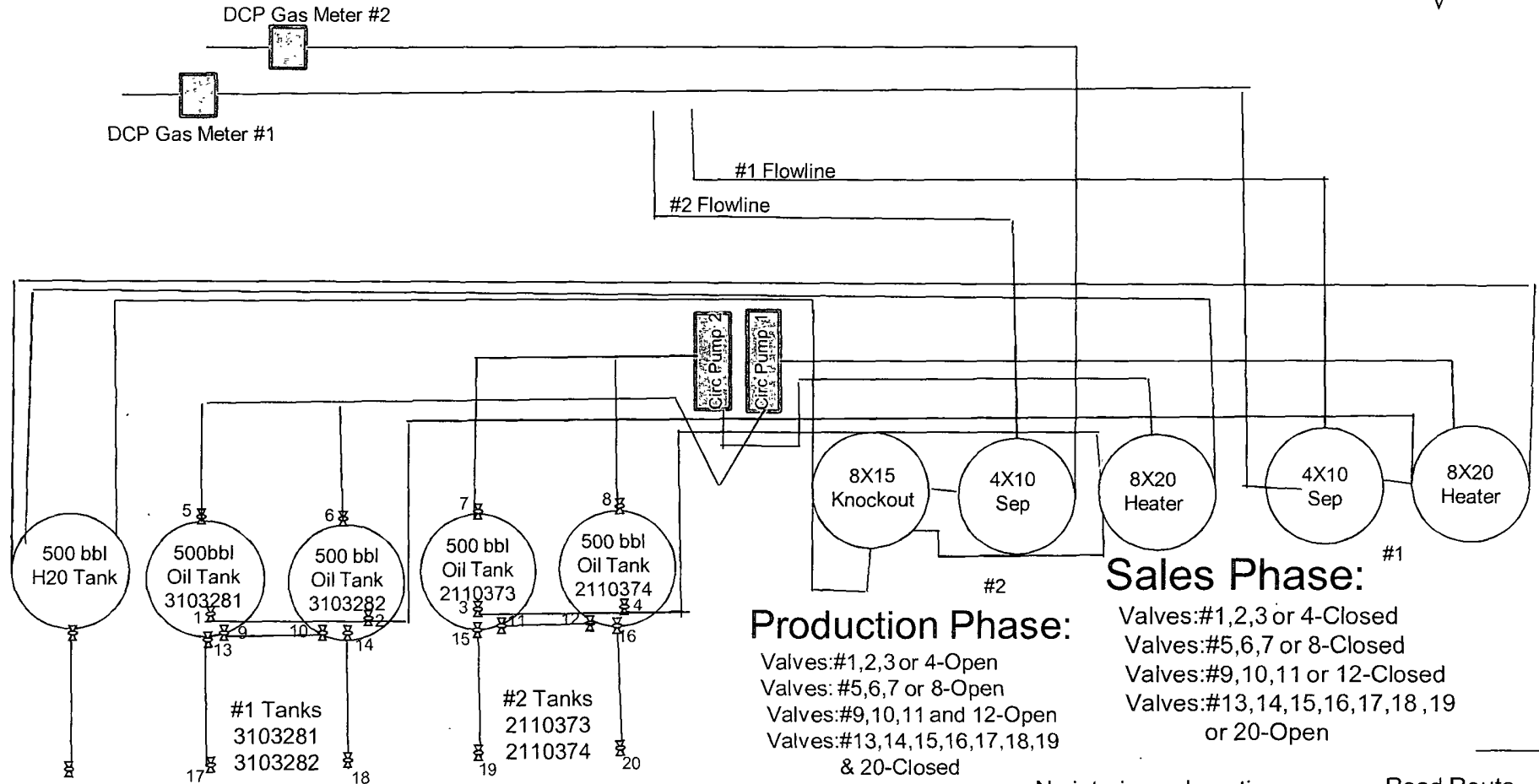
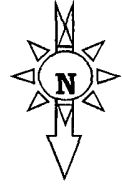
Data Zoom 13-4

# COG OPERATING LLC

550 W. Texas Ave Ste 100 Midland, Texas 79701  
(432)-683-7443

## Dodd 10-A Federal Tank Battery

2330' FNL, 1650' FEL \* Sec 10-T17S-R29E \* Unit G \* Eddy CO, NM



•Road access will be northwest direction entering the location for the Dodd Fed. #534

•Battery pad will be approx. 60' x 300'  
•This battery site will be located directly south of the Dodd Fed. #534 well location

### Production Phase:

Valves: #1,2,3 or 4-Open  
Valves: #5,6,7 or 8-Open  
Valves: #9,10,11 and 12-Open  
Valves: #13,14,15,16,17,18,19 & 20-Closed

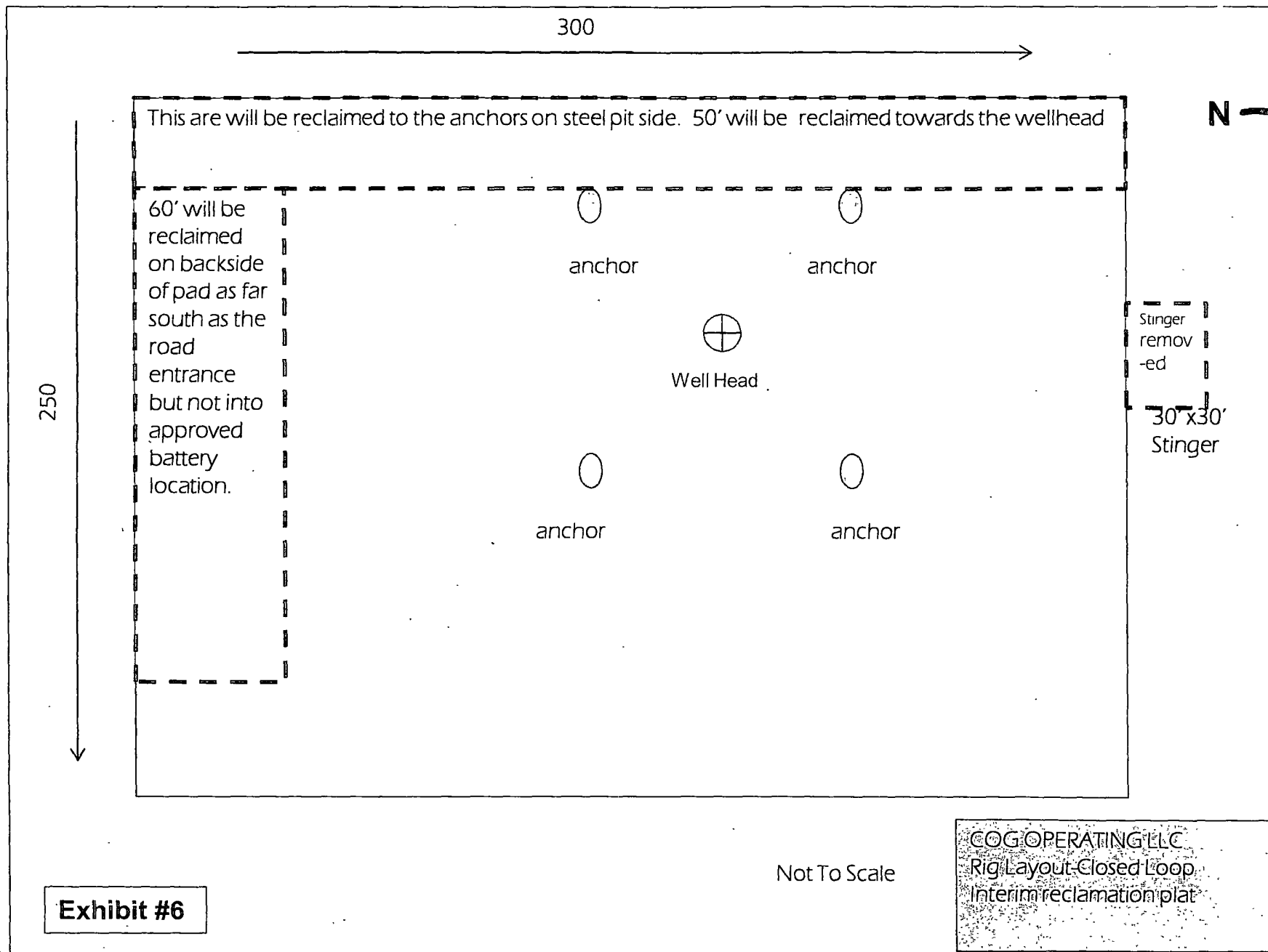
Water Transfer by Truck

### Sales Phase:

Valves: #1,2,3 or 4-Closed  
Valves: #5,6,7 or 8-Closed  
Valves: #9,10,11 or 12-Closed  
Valves: #13,14,15,16,17,18,19 or 20-Open

•No interim reclamation on battery pad until production or foreseeable production ceases. Reclamation standards will follow Section 10 B from the Surface Use Plan from the Dodd Fed. #534 well attached.

Road Route from northwest corner of location



## Offset wells to Dodd Federal Unit #534

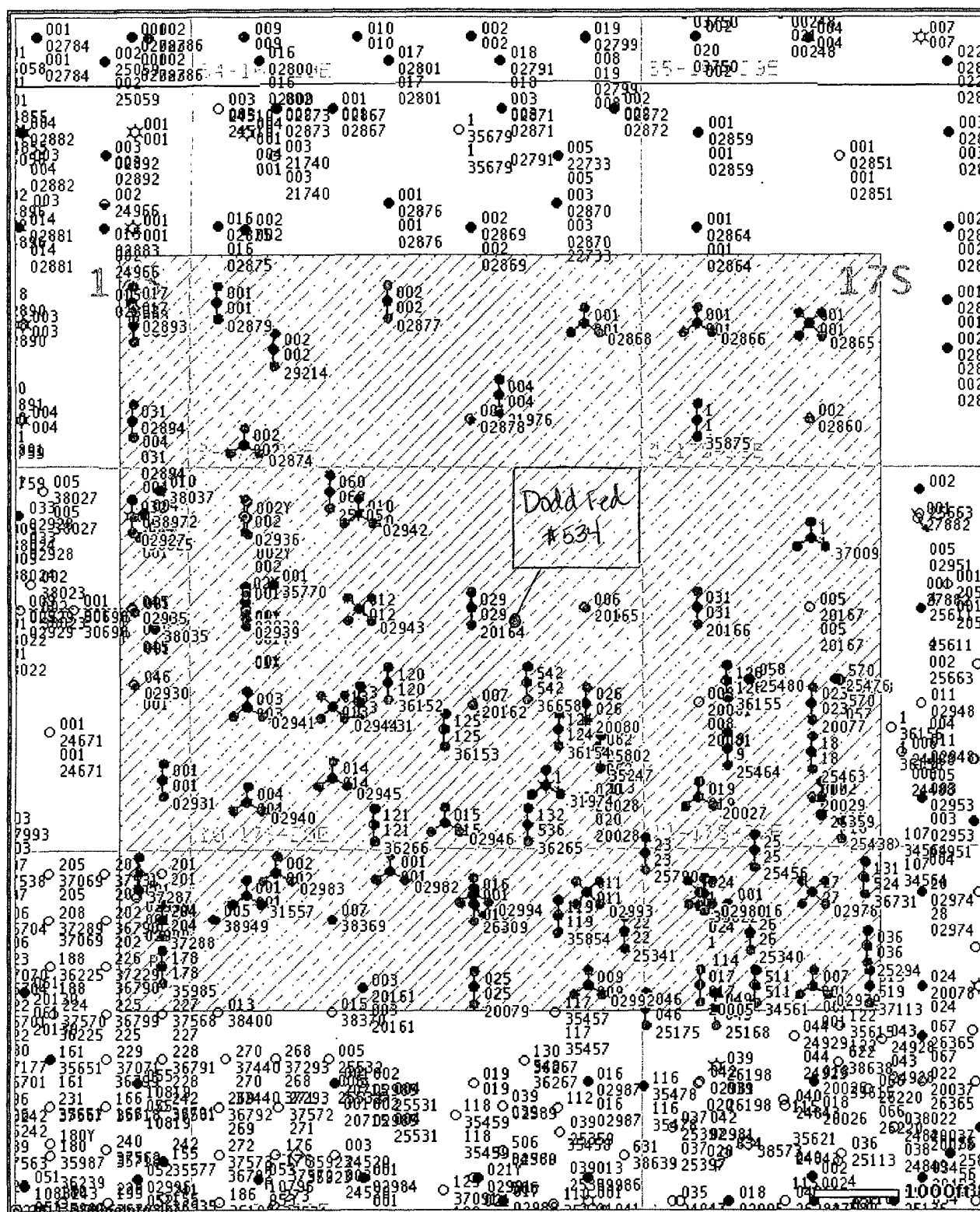
API#	Operator	County	Legal	Lease	Well#	Date Issued	Permitted Depth	Permit TVD	Images	Doc	Total Depth	Well Type	Well Status	Permit#
30-015-38972	COG OPERATING LLC	EDDY	S:9, T:17S, R:29E	EMPIRE STATE SWD 9	004	4/21/2011	8,350		Yes	link	8,350	PD	Active Permit	TEMP1367094007
30-015-38949	COG OPERATING LLC	EDDY	S:15, T:17S, R:29E	CONTINENTAL STATE	005	4/11/2011	5,500		Yes	link	5,500	PO	Active Permit	TEMP1137010626
30-015-38369	COG OPERATING LLC	EDDY	S:15, T:17S, R:29E	CONTINENTAL STATE	007	1/3/2011	5,500		Yes	link	5,500	PO	Active Permit	TEMP12789670
30-015-38025	CIMAREX ENERGY CO. OF COLORADO	EDDY	S:9, T:17S, R:29E	THREADTAIL 9 STATE	004	7/26/2010	6,000		Yes	link	6,000	PO	Active Permit	TEMP390033305
30-015-38035	CIMAREX ENERGY CO. OF COLORADO	EDDY	S:9, T:17S, R:29E	EMERALD 9 STATE	005	7/26/2010	6,000		Yes	link	6,000	PO	Active Permit	TEMP1068556877
30-015-38037	CIMAREX ENERGY CO. OF COLORADO	EDDY	S:9, T:17S, R:29E	EMERALD 9 STATE	010	7/26/2010	6,000		Yes	link	6,000	PO	Active Permit	TEMP752235273
30-015-37831	COG OPERATING LLC	EDDY	S:10, T:17S, R:29E	EMPIRE FEDERAL SWD	3	5/5/2010	9,200		Yes	link	9,200	U	Active Permit	TEMP35829904
30-015-37288	COG OPERATING LLC	EDDY	S:16, T:17S, R:29E	G J WEST COOP UNIT	204	9/30/2009	5,550		Yes	link	5,510	O	Active Permit	TEMP840007538
30-015-37287	COG OPERATING LLC	EDDY	S:16, T:17S, R:29E	G J WEST COOP UNIT	201	9/30/2009	5,550		Yes	link	5,504	O	Active Permit	TEMP207246675
30-015-37113	MARBOB ENERGY CORP	EDDY	S:14, T:17S, R:29E	DODD FEDERAL UNIT	519	6/10/2009	5,000		Yes	link	5,000	PO	Active Permit	TEMP167893324
30-015-37009	MEWBOURNE OIL COMPANY	EDDY	S:11, T:17S, R:29E	ORCA 11 FEDERAL COM	1	3/19/2009	10,950		Yes	link	10,975	G	Active Permit	TEMP562133154
30-015-36731	MARBOB ENERGY CORPORATION or MARBOB ENERGY CORP	EDDY	S:14, T:17S, R:29E	DODD FEDERAL UNIT	524	10/18/2008	5,000		Yes	link	5,010	O	Active Permit	TEMP225928711
30-015-36658	MARBOB ENERGY CORPORATION or MARBOB ENERGY CORP	EDDY	S:10, T:17S, R:29E	DODD FEDERAL UNIT	542	7/11/2008	5,000		Yes	link	5,000	PO	Active Permit	TEMP13843167
30-015-36416	MEWBOURNE OIL COMPANY	EDDY	S:14, T:17S, R:29E	PACU 14 FED COM	1	7/1/2008	11,000		Yes	link	11,000	PG	Active Permit	TEMP329695045
30-015-36266	MARBOB ENERGY CORPORATION or MARBOB ENERGY CORP	EDDY	S:10, T:17S, R:29E	DODD FEDERAL UNIT	537	4/1/2008	5,000		Yes	link	5,000	O	Active Permit	TEMP2030025557
30-015-36152	MARBOB ENERGY CORPORATION or MARBOB ENERGY CORP	EDDY	S:10, T:17S, R:29E	DODD FEDERAL UNIT	540	2/26/2008	5,000		Yes	link	4,480	O	Active Permit	TEMP1928062287
30-015-36153	MARBOB ENERGY CORP	EDDY	S:10, T:17S, R:29E	DODD FEDERAL UNIT	541	2/26/2008	5,000		Yes	link	5,000	O	Active Permit	TEMP121063859
30-015-36154	MARBOB ENERGY CORPORATION or MARBOB ENERGY CORP	EDDY	S:10, T:17S, R:29E	DODD FEDERAL UNIT	543	2/26/2008	5,000		Yes	link	5,000	O	Active Permit	TEMP896335047



30-015-36155	MARBOB ENERGY CORPORATION or MARBOB ENERGY CORP	EDDY	S.11, T.17S, R.29E	DODD FEDERAL UNIT	545	2/26/2008	5,000	Yes	link	5,000	O	Active Permit	TEMP636535816
30-015-36265	MARBOB ENERGY CORPORATION or MARBOB ENERGY CORP	EDDY	S 10, T.17S, R.29E	DODD FEDERAL UNIT	536	1/3/2008	5,000	Yes	link	5,010	O	Active Permit	TEMP975264023
30-015-35985	COG OPERATING LLC	EDDY	S 16, T.17S, R 29E	G J WEST COOP UNIT	178	12/12/2007	5,450	Yes	link	5,482	O	Active Permit	TEMP587940650
30-015-35875	MEWBOURNE OIL CO or MEWBOURNE OIL COMPANY	EDDY	S.2, T 17S, R 29E	TERRA 2 STATE COM	001	10/19/2007	10,900	Yes	link	10,970	G	Active Permit	TEMP13569703
30-015-35854	MARBOB ENERGY CORP	EDDY	S 15, T 17S, R.29E	DODD FEDERAL UNIT	551	10/2/2007	5,000	Yes	link	4,467	O	Active Permit	TEMP1777009968
30-015-35770	OXY USA WTP LIMITED PARTNERSHIP	EDDY	S 10, T.17S, R.29E	OXY SALAMANDER FEDERAL	1	8/23/2007	11,000	Yes	link	11,000	PG	Active Permit	TEMP694565218
30-015-35622	MARBOB ENERGY CORPORATION or MARBOB ENERGY CORP	EDDY	S.14, T.17S, R.29E	DODD FEDERAL UNIT	523	5/11/2007	5,000	Yes	link	5,000	O	Active Permit	TEMP241121080
30-015-35247	MARBOB ENERGY CORP	EDDY	S:10, T 17S, R 29E	DODD FEDERAL UNIT	520	11/21/2006	5,000	Yes	link	5,000	O	Active	TEMP462382425
30-015-34593	OXY USA WTP LIMITED PARTNERSHIP	EDDY	S 14, T.17S, R.29E	OXY PACU FEDERAL COM	1	2/3/2006	11,000	No	link	11,000	PG	Active Permit	TEMP2127801860
30-015-34561	MARBOB ENERGY CORP	EDDY	S:14, T.17S, R 29E	DODD FEDERAL UNIT	511	12/20/2005	5,000	No	link	4,550	PO	Active Permit	TEMP1221177813
30-015-02931	HANSON ENERGY	EDDY	S.9, T 17S, R 29E	SINCLAIR STATE	001	5/1/2003	0	No	link	2,560	O	Pumping	TEMP1970743159
30-015-02937	HANSON ENERGY	EDDY	S 10, T.17S, R.29E	FEATHERSTONE	002Y	5/1/2003	0	No	link	0	O	Pumping	TEMP1997290833
30-015-02938	HANSON ENERGY	EDDY	S 10, T.17S, R.29E	FEATHERSTONE	001Y	5/1/2003	0	No	link	0	O	Pumping	TEMP2134261442
30-015-02940	HANSON ENERGY	EDDY	S 10, T 17S, R 29E	FEATHERSTONE	004	5/1/2003	0	No	link	0	O	Pumping	TEMP1768365238
30-015-02941	HANSON ENERGY	EDDY	S:10, T:17S, R.29E	FEATHERSTONE	003	5/1/2003	0	No	link	0	O	Active	TEMP1893023882
30-015-31974	DOMINION OKLAHOMA TEXAS EXPL. & PROD INC	EDDY	S 10, T.17S, R 29E	DURANGO 10 FEDERAL	001	8/28/2001		No	link	10,925	G	Flowing	TEMP1569032171
30-015-31557	MARBOB ENERGY CORP	EDDY	S 15, T.17S, R.29E	DURANGO 15 STATE COM	001	6/21/2001		No	link	10,900	U	Active	TEMP344954045
30-015-31557	DOMINION OKLAHOMA TEXAS EXPL. & PROD INC or LOUIS DREYFUS NATURAL GAS CORPORATION	EDDY	S 15, T.17S, R 29E	DURANGO "15" STATE COM	1	1/18/2001	11,000	Yes	link	10,900	U	Active	TEMP671541126
30-015-28603	MARBOB ENERGY CORP	EDDY	S:11, T:17S, R.29E	M DODD B	570	2/10/1999		No	link		PO	Unknown	TEMP309950642
30-015-29214	BILL L MILLER	EDDY	S:3, T 17S, R 29E	BROWN STATE	002	10/9/1996		No	link	2,570	O	Active	TEMP1106481915

30-015-26309	MARBOB ENERGY CORP	EDDY	S 15, T 17S, R 29E	DELTA WING FEDERAL	001	9/17/1996			No	link	10,950	D	Salt Water Disposal	TEMP1226333627
30-015-02865	C F M OIL CO or C F M OIL CO DBA LOUIS AND JUDY FULTON	EDDY	S 2, T:17S, R 29E	STATE B	001	1/1/1995	0		No	link	2,586	O	Active	TEMP1299846097
30-015-02893	MARKS AND GARNER PRODUCTION LTD CO	EDDY	S 4, T:17S, R 29E	CAVE POOL UNIT	017	12/1/1994	0		No	link	0	O	Temporarily Abandoned	TEMP1375713079
30-015-02927	MARKS AND GARNER PRODUCTION LTD CO	EDDY	S 9, T 17S, R 29E	CAVE POOL UNIT	032	12/1/1994	0		No	link	0	O	Temporarily Abandoned	TEMP1391046910
30-015-26359	MARBOB ENERGY CORP	EDDY	S:11, T 17S, R:29E	DELTA WING FEDERAL	002	7/1/1991			No	link	10,910	PG	Pumping	TEMP1897409279
30-015-25790	MARBOB ENERGY CORP	EDDY	S 14, T:17S, R:29E	M DODD B	061	12/1/1987			No	link	4,495	O	Pumping	TEMP497971381
30-015-25464	MARBOB ENERGY CORP	EDDY	S 11, T 17S, R:29E	M DODD B	056	2/1/1987			No	link	4,517	O	Pumping	TEMP372007179
30-015-25705	MARBOB ENERGY CORP	EDDY	S:10, T 17S, R:29E	M DODD B	060	2/1/1987			No	link	4,675	PO	Pumping	TEMP1112987588
30-015-25456	MARBOB ENERGY CORP	EDDY	S 14, T:17S, R 29E	M DODD B	054	12/1/1986			No	link	4,650	O	Pumping	TEMP1342343905
30-015-25463	MARBOB ENERGY CORP	EDDY	S:11, T 17S, R:29E	M DODD B	055	1/1/1986			No	link	4,512	O	Pumping	TEMP387781883
30-015-25340	MARBOB ENERGY CORP	EDDY	S 14, T:17S, R:29E	M DODD B	051	12/1/1985			No	link	5,813	O	Pumping	TEMP52740283
30-015-25341	MARBOB ENERGY CORP	EDDY	S:15, T 17S, R:29E	M DODD B	052	12/1/1985			No	link	4,518	O	Pumping	TEMP91215173
30-015-25438	MARBOB ENERGY CORP	EDDY	S 11, T:17S, R:29E	M DODD B	053	12/1/1985			No	link	4,525	O	Pumping	TEMP1962943881
30-015-25294	MARBOB ENERGY CORP	EDDY	S 14, T:17S, R:29E	M DODD B	050	11/1/1985			No	link	4,533	PO	Pumping	TEMP472993636
30-015-25168	MARBOB ENERGY CORP	EDDY	S:14, T:17S, R:29E	M DODD B	049	3/1/1985	0		No	link	3,522	O	Pumping	TEMP1831636951
30-015-25175	MARBOB ENERGY CORP	EDDY	S:14, T:17S, R:29E	M DODD B	046	3/1/1985			No	link	4,511	PO	Pumping	TEMP1611881029
30-015-21976	C O FULTON	EDDY	S:3, T:17S, R 29E	DUBLIN STATE	004	11/1/1978	0		No	link	2,989	O	Pumping	TEMP771666052
30-015-20027	MARBOB ENERGY CORP	EDDY	S:11, T:17S, R:29E	M DODD B	019	1/1/1970			No	link	2,700	O	Pumping	TEMP831235377
30-015-25476	STEVENS OPERATING CORPORATION or HANAGAN PETROLEUM CORP	EDDY	S 11, T:17S, R:29E	PRE-ONGARD WELL	057	1/1/1970			No	link		PO	Active Permit	TEMP1140308369
30-015-25480	STEVENS OPERATING CORPORATION or HANAGAN PETROLEUM CORP	EDDY	S 11, T:17S, R 29E	PRE-ONGARD WELL	058	1/1/1970			No	link		PO	Active Permit	TEMP1279202722
30-015-25802	STEVENS OPERATING CORPORATION or HANAGAN PETROLEUM CORP	EDDY	S 10, T:17S, R 29E	PRE-ONGARD WELL	062	1/1/1970			No	link		PO	Active Permit	TEMP923084658

## Offset wells to Dodd Federal Unit #534



© 2011 Drilling Info, Inc. All rights reserved. All data and information is provided "As Is" and subject to the [DI subscription agreement](#).