

District I

1625 N. French Dr., Hobbs, NM 88240

District II

1301 W. Grand Avenue, Artesia, NM 88210

District III

1000 Rio Brazos Rd., Aztec, NM 87410

District IV

1220 S. St. Francis Dr., Santa Fe, NM 87505

State of New Mexico
Energy, Minerals & Natural Resources Department
OIL CONSERVATION DIVISION
1220 South St. Francis Dr.
Santa Fe, NM 87505

Form C-102

Revised October 15, 2009

Submit one copy to appropriate

District Office

☐ AMENDED REPORT**WELL LOCATION AND ACREAGE DEDICATION PLAT**

¹ API Number 30-015-38611	² Pool Code 97020	³ Pool Name Hackberry; Bone Spring, NW
⁴ Property Code 38851	⁵ Property Name ARCTURUS "18" FED COM	⁶ Well Number 4H ✓
⁷ GRID No. 6137 ✓	⁸ Operator Name DEVON ENERGY PRODUCTION COMPANY, L.P.	⁹ Elevation 3410.4

¹⁰ Surface Location

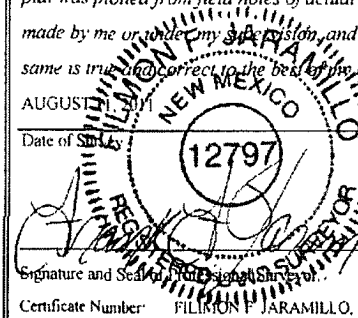
UL or lot no.	Section	Township	Range	Lot Idn	Feet from the	North/South line	Feet from the	East/West line	County
M	18	19 S	31 E	4	1150	SOUTH	340	WEST	EDDY

¹¹ Bottom Hole Location If Different From Surface

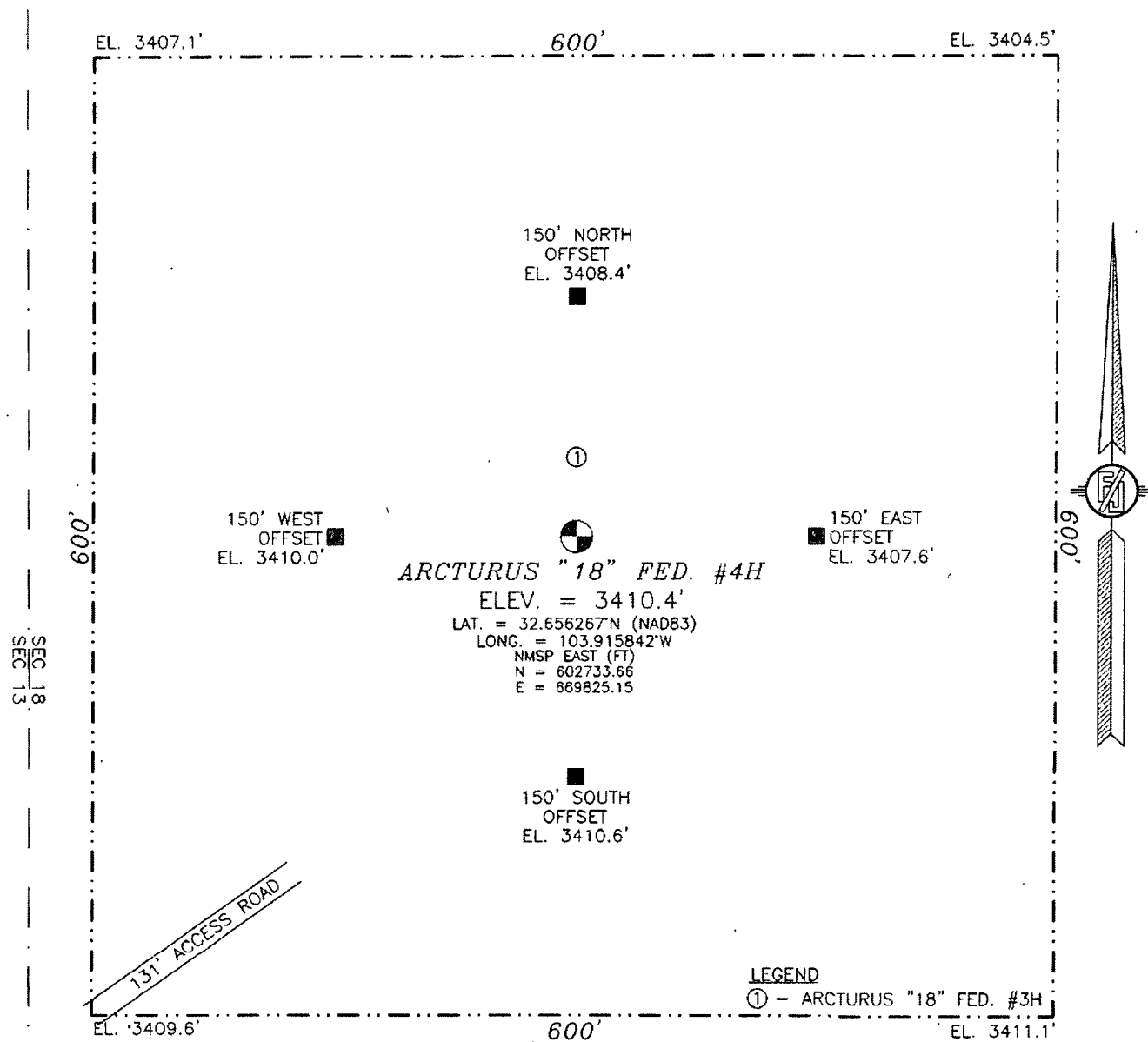
UL or lot no.	Section	Township	Range	Lot Idn	Feet from the	North/South line	Feet from the	East/West line	County
P	18	19 S	31 E		400	SOUTH	330	EAST	EDDY

¹² Dedicated Acres 157.74	¹³ Joint or Infill	¹⁴ Consolidation Code	¹⁵ Order No.
--	-------------------------------	----------------------------------	-------------------------

No allowable will be assigned to this completion until all interests have been consolidated or a non-standard unit has been approved by the division.

NW CORNER SEC. 18 LAT. = 32.667617°N LONG. = 103.916936°W NMSP EAST (FT) N = 606861.44 E = 669472.14	NE CORNER SEC. 18 LAT. = 32.667674°N LONG. = 103.900078°W NMSP EAST (FT) N = 606902.94 E = 674659.67	¹⁷ OPERATOR CERTIFICATION I hereby certify that the information contained herein is true and complete to the best of my knowledge and belief, and that this organization either owns a working interest or unleased mineral interest in the land including the proposed bottom hole location or has a right to drill this well at this location pursuant to a contract with an owner of such a mineral or working interest, or to a voluntary pooling agreement or a compulsory pooling order heretofore entered by the division.
<div style="text-align: center;"> RECEIVED SEP 29 2011 NMOCD, ARTESIA </div>		
ARCTURUS "18" FED. #4H ELEV. = 3410.4 LAT. = 32.656267°N (NAD83) LONG. = 103.915842°W NMSP EAST (FT) N = 602733.66 E = 669825.15	SE CORNER SEC. 18 LAT. = 32.653162°N LONG. = 103.900025°W NMSP EAST (FT) N = 601623.39 E = 674697.53	¹⁸ SURVEYOR CERTIFICATION I hereby certify that the well location shown on this plat was plotted from field notes of actual surveys made by me or under my supervision, and that the same is true and correct to the best of my belief. AUGUST 11, 2011 Date of Survey  Signature and Seal of the Surveyor Certificate Number: FILIMON F. JARAMILLO, PLS 12797 SURVEY NO 2708
SURFACE LOCATION 340' 1150' SW CORNER SEC. 18 LAT. = 32.653103°N LONG. = 103.916948°W NMSP EAST (FT) N = 601581.07 E = 669488.15	BOTTOM OF HOLE LAT. = 32.654214°N LONG. = 103.901111°W NMSP EAST (FT) N = 602004.57 E = 674361.88 330' 400'	

SECTION 18, TOWNSHIP 19 SOUTH, RANGE 31 EAST, N.M.P.M.
EDDY COUNTY, STATE OF NEW MEXICO



0 10 50 100 200

SCALE 1" = 100'

DIRECTIONS TO LOCATION

FROM PAVED CR #222 (SHUGART RD.) AND PAVED RC #248 (LUSK PLANT RD.) GO SOUTHWEST ON 222 4.3 MILES TURN RIGHT ON CALICHE ROAD AND GO NORTH 1.0 MILES TURN LEFT AND GO WEST 0.35 MILES BEND RIGHT AND GO NORTH 0.5 MILES TURN LEFT AND GO SOUTHWEST 0.4 MILES TURN RIGHT AND GO NORTH 1.1 MILES AND LOCATION IS ON RIGHT (EAST) 320'

DEVON ENERGY PRODUCTION COMPANY, L.P.

ARCTURUS "18" FED. #4H

LOCATED 1150 FT. FROM THE SOUTH LINE
AND 340 FT. FROM THE WEST LINE OF
SECTION 18, TOWNSHIP 19 SOUTH,
RANGE 31 EAST, N.M.P.M.
EDDY COUNTY, STATE OF NEW MEXICO

AUGUST 11, 2011

SURVEY NO. 270B

MADRON SURVEYING, INC. 301 SOUTH CANAL (575) 687-5630 CARLSBAD, NEW MEXICO

LOCATION VERIFICATION MAP



NOT TO SCALE

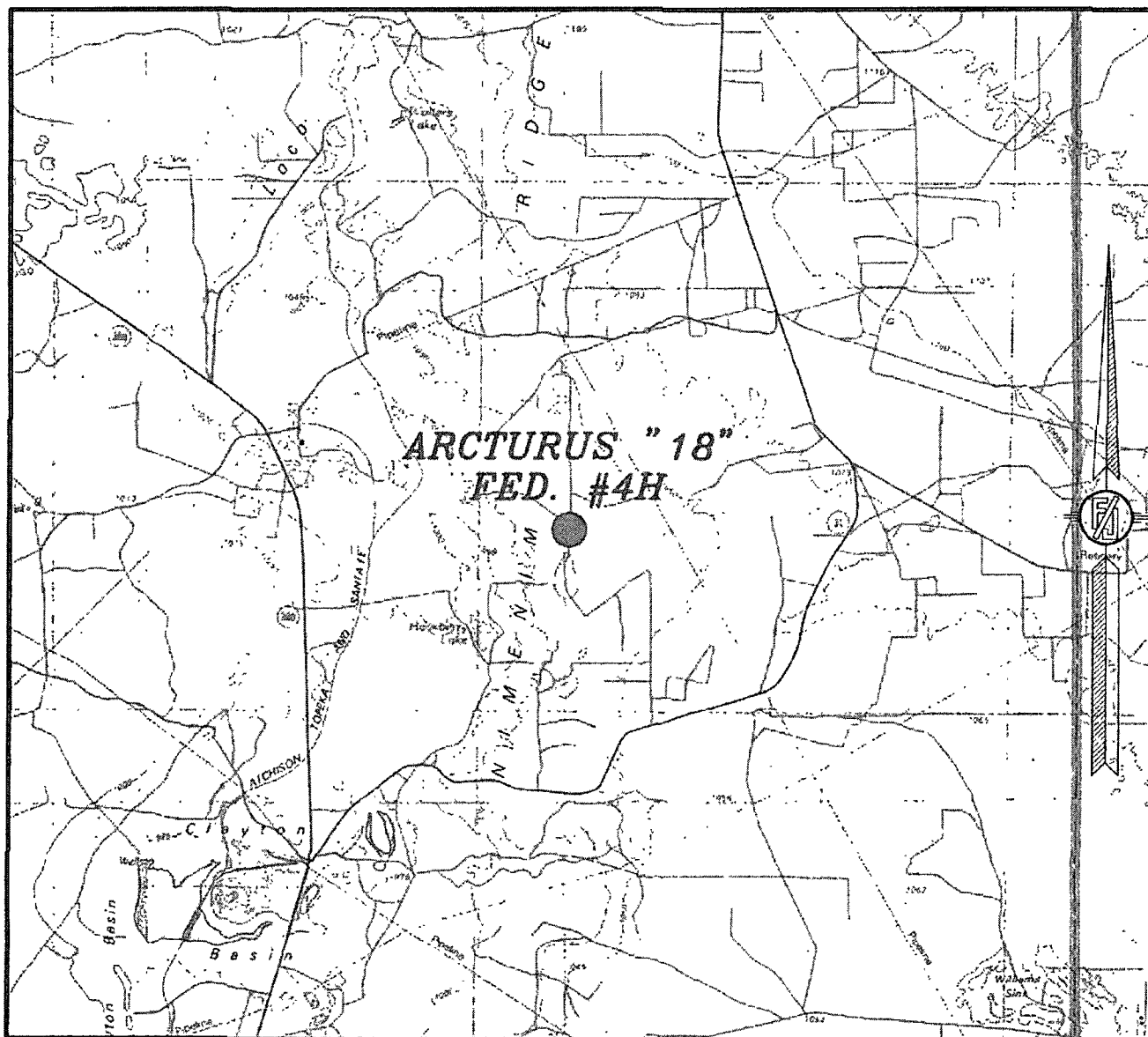
ARCTURUS "18" FED. #4H

EDDY COUNTY, STATE OF NEW MEXICO

SURVEY NO. 270B

301 30U*4 CANAL
(575) 887-5830

SECTION 18, TOWNSHIP 19 SOUTH, RANGE 31 EAST, N.M.P.M.
EDDY COUNTY, STATE OF NEW MEXICO
VICINITY MAP



NOT TO SCALE

DEVON ENERGY PRODUCTION COMPANY, L.P.
ARCTURUS "18" FED. #4H
LOCATED 1150 FT. FROM THE SOUTH LINE
AND 340 FT. FROM THE WEST LINE OF
SECTION 18, TOWNSHIP 19 SOUTH,
RANGE 31 EAST, N.M.P.M.
EDDY COUNTY, STATE OF NEW MEXICO

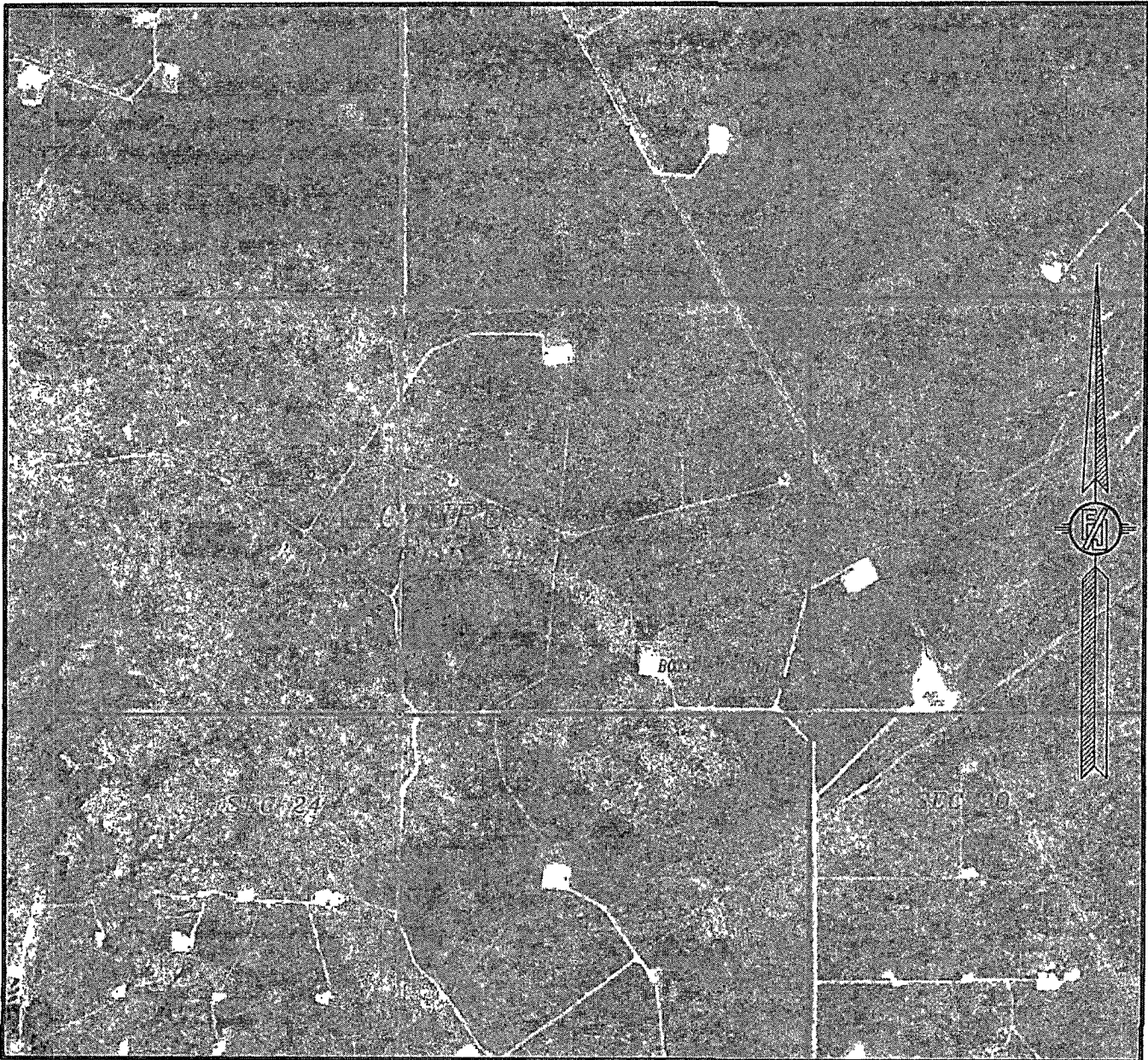
AUGUST 11, 2011

SURVEY NO. 270B

MADRON SURVEYING, INC. 531 SOUTH CANAL CARLSBAD, NEW MEXICO
(575) 887-5830

SECTION 18, TOWNSHIP 19 SOUTH, RANGE 31 EAST, N.M.P.M.
EDDY COUNTY, STATE OF NEW MEXICO

AERIAL PHOTO



NOT TO SCALE
AERIAL PHOTO:
GOOGLE EARTH
USDA - AUG, 2009

DEVON ENERGY PRODUCTION COMPANY, L.P.
ARCTURUS "18" FED. #4H
LOCATED 1150 FT. FROM THE SOUTH LINE
AND 340 FT. FROM THE WEST LINE OF
SECTION 18, TOWNSHIP 19 SOUTH,
RANGE 31 EAST, N.M.P.M.
EDDY COUNTY, STATE OF NEW MEXICO

AUGUST 11, 2011

SURVEY NO. 270B

MADRON SURVEYING, INC. 501 SOUTH CANAL, CARLSBAD, NEW MEXICO
(575) 887-5830