

Submit To: Apache District Office Two Copies District I 1625 N. French Dr, Hobbs, NM 88240 District II 1301 W Grand Avenue, Artesia, NM 88210 District III 1000 Rio Brazos Rd, Aztec, NM 87410 District IV 1220 S. St. Francis Dr, Santa Fe, NM 87505		<b>State of New Mexico</b> <b>Energy, Minerals and Natural Resources</b>  <b>Oil Conservation Division</b> <b>1220 South St. Francis Dr.</b> <b>Santa Fe, NM 87505</b>				<b>Form C-105</b> July 17, 2008				
								1. WELL API NO. 30-015-38593		
								2. Type of Lease <input checked="" type="checkbox"/> STATE <input type="checkbox"/> FEE <input type="checkbox"/> FED/INDIAN		
								3. State Oil & Gas Lease No. X0-0647-0405		
<b>WELL COMPLETION OR RECOMPLETION REPORT AND LOG</b>										
4. Reason for filing:  <input checked="" type="checkbox"/> <b>COMPLETION REPORT</b> (Fill in boxes #1 through #31 for State and Fee wells only)  <input type="checkbox"/> <b>C-144 CLOSURE ATTACHMENT</b> (Fill in boxes #1 through #9, #15 Date Rig Released and #32 and/or #33; attach this and the plat to the C-144 closure report in accordance with 19.15.17.13.K NMAC)						5. Lease Name or Unit Agreement Name NB TWEEN STATE				
						6. Well Number: 23				
7. Type of Completion: <input checked="" type="checkbox"/> NEW WELL <input type="checkbox"/> WORKOVER <input type="checkbox"/> DEEPENING <input type="checkbox"/> PLUGBACK <input type="checkbox"/> DIFFERENT RESERVOIR <input type="checkbox"/> OTHER						<div style="border: 2px solid black; padding: 5px; display: inline-block;"> <b>RECEIVED</b>   <b>SEP 23 2011</b>   <b>NMOCD ARTESIA</b> </div>				
8. Name of Operator APACHE CORPORATION										
10. Address of Operator 303 VETERANS AIRPARK LANE, SUITE 3000 MIDLAND, TEXAS 79705						9. OGRID 873				
11. Pool name or Wildcat ARTESIA; GLORIETA-YESO										
12. Location	Unit Ltr	Section	Township	Range	Lot	Feet from the	N/S Line	Feet from the	E/W Line	County
Surface:	G	25	17S	28E		1635	N	2330	E	EDDY
BH:										
13. Date Spudded 07/07/2011	14. Date T.D. Reached 07/14/2011	15. Date Rig Released 07/15/2011		16. Date Completed (Ready to Produce) 08/25/2011			17. Elevations (DF and RKB, RT, GR, etc.) 3689 GR			
18. Total Measured Depth of Well 5698'		19. Plug Back Measured Depth 5650'		20. Was Directional Survey Made? YES			21. Type Electric and Other Logs Run			
22. Producing Interval(s), of this completion - Top, Bottom, Name Tubb/Blinbry:5254-5371;Blinbry/Paddock:4182-4602;Paddock:3805-3996;Glorieta/Paddock:3670-3774										
<b>23. CASING RECORD (Report all strings set in well)</b>										
CASING SIZE		WEIGHT LB./FT.		DEPTH SET		HOLE SIZE		CEMENTING RECORD		AMOUNT PULLED
8.625		24		405		12.25		400 SX CLASS C		
5.5		17		5700		7.875		1300 SX CLASS C		
<b>24. LINER RECORD</b>						<b>25. TUBING RECORD</b>				
SIZE	TOP	BOTTOM	SACKS CEMENT	SCREEN		SIZE	DEPTH SET	PACKER SET		
						2-7/8"	5537.42			
26. Perforation record (interval, size, and number) Lower Blinbry, Tubb 5254-71', 2 jsf, 18 holes Lower Paddock/Upper Blinbry 4182-4601', 1 jsf, 25 holes Upper Paddock 3805-3996', 1 jsf, 24 holes Glorieta/Upper Paddock 3670-3774', 2 jsf, 30 holes						27. ACID, SHOT, FRACTURE, CEMENT, SQUEEZE, ETC.				
						DEPTH INTERVAL		AMOUNT AND KIND MATERIAL USED		
						5254-71		AT w/2500g 15% HCL, Frac.133024g 20#FF, 180000# 16/30 sand		
						4182-4601		AT w/2500g 15% HCL, Frac.164932g 20#FF, 210000# 16/30 sand		
						3805-3996		AT w/2500g 15% HCL, Frac.128834g 20#FF, 161000# 16/30 sand		
<b>28. PRODUCTION 3670-3774, ATw/2500gals 15% HCL, 170765g 20#FF</b>										
Date First Production 08/25/2011		Production Method (Flowing, gas lift, pumping - Size and type pump) 640 PUMPING UNIT				Well Status (Prod. or Shut-in) PROD.		RRAC: 23700 # 16/30 sd.		
Date of Test 9-18-11	Hours Tested 24	Choke Size	Prod'n For Test Period	Oil - Bbl 65	Gas - MCF 70	Water - Bbl. 444	Gas - Oil Ratio 1077			
Flow Tubing Press.	Casing Pressure	Calculated 24-Hour Rate	Oil - Bbl. 65	Gas - MCF 70	Water - Bbl. 444	Oil Gravity - API - (Corr.) 38.7				
29. Disposition of Gas (Sold, used for fuel, vented, etc.) SOLD								30. Test Witnessed By		
31. List Attachments Inclination Report; C-102, C103, C104, Logs ser 9-7-11, Wellbore schematic										
32. If a temporary pit was used at the well, attach a plat with the location of the temporary pit.										
33. If an on-site burial was used at the well, report the exact location of the on-site burial:										
Latitude				Longitude				NAD 1927 1983		
I hereby certify that the information shown on both sides of this form is true and complete to the best of my knowledge and belief										
Signature <i>Beverly Hatfield</i>				Printed Name BEV HATFIELD		Title Sr Staff Engineering Tech			Date 09/07/2011	
E-mail Address Beverly.Hatfield@apachecorp.com										

2

This form is to be filed with the appropriate District Office of the Division not later than 20 days after the completion of any newly-drilled or deepened well and not later than 60 days after completion of closure. When submitted as a completion report, this shall be accompanied by one copy of all electrical and radio-activity logs run on the well and a summary of all special tests conducted, including drill stem tests. All depths reported shall be measured depths. In the case of directionally drilled wells, true vertical depths shall also be reported. For multiple completions, items 11, 12 and 26-31 shall be reported for each zone.

INDICATE FORMATION TOPS IN CONFORMANCE WITH GEOGRAPHICAL SECTION OF STATE

Southeastern New Mexico		Northwestern New Mexico	
T. Anhy	T. Canyon	T. Ojo Alamo	T. Penn A"
T. Salt	T. Strawn	T. Kirtland	T. Penn. "B"
B. Salt	T. Atoka	T. Fruitland	T. Penn. "C"
T. Yates	T. Miss	T. Pictured Cliffs	T. Penn. "D"
T. 7 Rivers	T. Devonian	T. Cliff House	T. Leadville
T. Queen	T. Silurian	T. Menefee	T. Madison
T. Grayburg	T. Montoya	T. Point Lookout	T. Elbert
T. San Andres	T. Simpson	T. Mancos	T. McCracken
T. Glorieta	T. McKee	T. Gallup	T. Ignacio Otzte
T. Paddock	T. Ellenburger	Base Greenhorn	T. Granite
T. Blinebry	T. Gr. Wash	T. Dakota	
T. Tubb	T. Delaware Sand	T. Morrison	
T. Drinkard	T. Bone Springs	T. Todilto	
T. Abo	T.	T. Entrada	
T. Wolfcamp	T.	T. Wingate	
T. Penn	T.	T. Chinle	
T. Cisco (Bough C)	T.	T. Permian	

## OIL OR GAS SANDS OR ZONES

No. 1, from.....to.....

No. 2, from.....to.....

No. 3, from.....to.....

No. 4, from.....to.....

## IMPORTANT WATER SANDS

Include data on rate of water inflow and elevation to which water rose in hole.

No. 1, from.....to.....feet.....  
 No. 2, from.....to.....feet.....  
 No. 3, from.....to.....feet.....

## LITHOLOGY RECORD (Attach additional sheet if necessary)

From	To	Thickness In Feet	Lithology

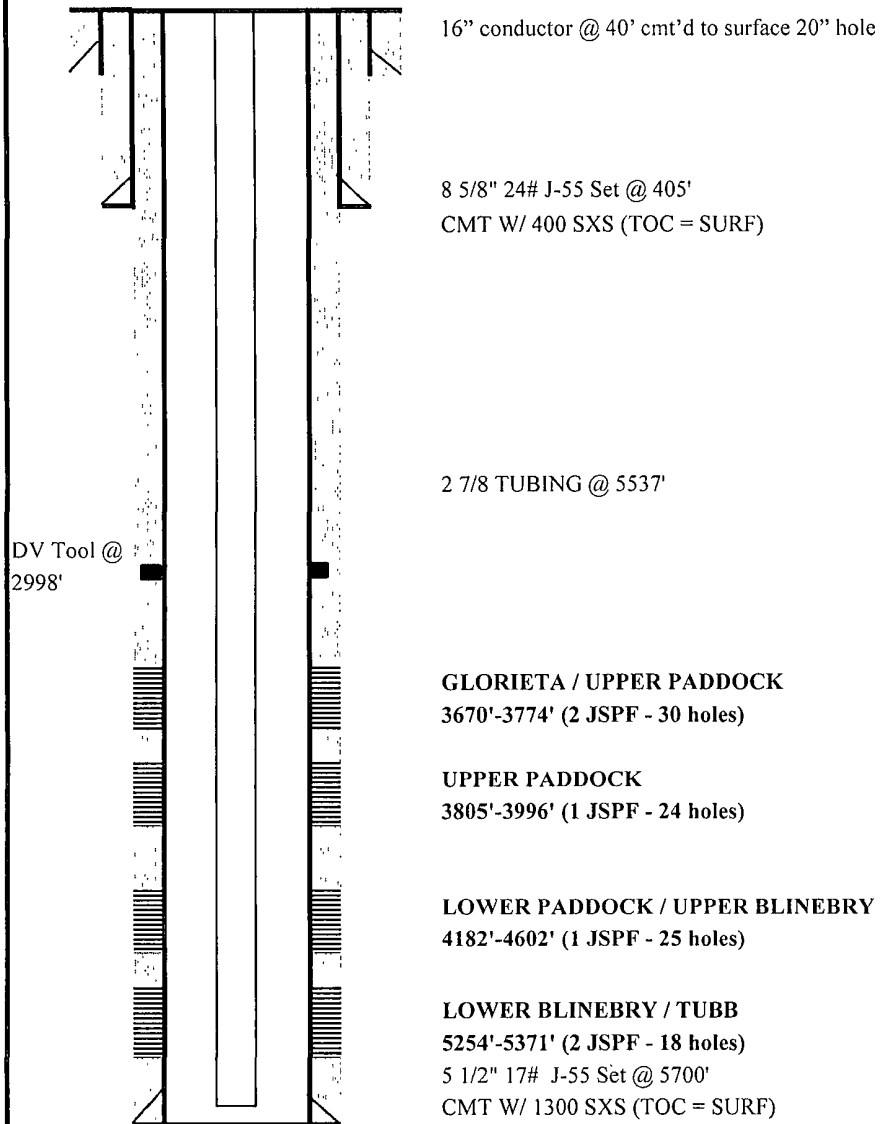
From	To	Thickness In Feet	Lithology

# Apache Corp.

**GROUP:** Permian North  
**FIELD:** Artesia (BP)  
**LEASE/UNIT:** N B Tween State  
**COUNTY:** Eddy

**DATE:** Aug. 26, 2011  
**BY:** SNH  
**WELL:** #23  
**STATE:** New Mexico

**KB = 12'**  
**GL = 3689'**



TD = 5700'  
PBD = 5650'

District I  
1625 N French Dr., Hobbs, NM 88240  
District II  
1301 W. Grand Avenue, Artesia, NM 88210  
District III  
1000 Rio Brazos Rd., Aztec, NM 87410  
District IV  
1220 S. St Francis Dr., Santa Fe, NM 87505

State of New Mexico  
Energy, Minerals & Natural Resources

Form C-104  
Revised Feb. 26, 2007

Oil Conservation Division  
1220 South St. Francis Dr.  
Santa Fe, NM 87505

Submit to Appropriate District Office  
5 Copies

☐ AMENDED REPORT

I. REQUEST FOR ALLOWABLE AND AUTHORIZATION TO TRANSPORT

<sup>1</sup> Operator name and Address APACHE CORPORATION 303 VETERANS AIRPARK LANE, SUITE 3000 MIDLAND, TEXAS 79705		<sup>2</sup> OGRID Number 873
		<sup>3</sup> Reason for Filing Code/ Effective Date NW 08/25/2011
<sup>4</sup> API Number 30 - 0 15-38593	<sup>5</sup> Pool Name ARTESIA; GLORIETA-YESO	<sup>6</sup> Pool Code 96830
<sup>7</sup> Property Code 308723	<sup>8</sup> Property Name NB TWEEN STATE	<sup>9</sup> Well Number 23

II. <sup>10</sup> Surface Location

UL or lot no. G	Section 25	Township 17S	Range 28E	Lot Idn	Feet from the 1635	North/South line NORTH	Feet from the 2330	East/West line EAST	County EDDY
--------------------	---------------	-----------------	--------------	---------	-----------------------	---------------------------	-----------------------	------------------------	----------------

<sup>11</sup> Bottom Hole Location

UL or lot no.	Section	Township	Range	Lot Idn	Feet from the	North/South line	Feet from the	East/West line	County
<sup>12</sup> Lse Code S	<sup>13</sup> Producing Method Code P	<sup>14</sup> Gas Connection Date	<sup>15</sup> C-129 Permit Number	<sup>16</sup> C-129 Effective Date	<sup>17</sup> C-129 Expiration Date				

III. Oil and Gas Transporters

<sup>18</sup> Transporter OGRID	<sup>19</sup> Transporter Name and Address	<sup>20</sup> O/G/W
221115	FRONTIER FIELD SERVICES 4200 EAST SKELLY DRIVE, SUITE 700 TULSA, OK 74135	G
252293	HOLLY ENERGY PIPELINE 311 W. QUAY PO BOX 1360 ARTESIA NM 88210	O

RECEIVED  
SEP 23 2011  
NMOCD ARTESIA

IV. Well Completion Data

<sup>21</sup> Spud Date 07/07/2011	<sup>22</sup> Ready Date 08/25/2011	<sup>23</sup> TD 5698'	<sup>24</sup> PBDT 5650'	<sup>25</sup> Perforations 3670-5371'	<sup>26</sup> DHC, MC
<sup>27</sup> Hole Size	<sup>28</sup> Casing & Tubing Size	<sup>29</sup> Depth Set	<sup>30</sup> Sacks Cement		
12.25	8.625	405	400 SX CLASS C		
7.875	5.5	5700	1300 SX CLASS C		
TUBING	2-7/8	5537.42			

V. Well Test Data

<sup>31</sup> Date New Oil 8-25-11	<sup>32</sup> Gas Delivery Date	<sup>33</sup> Test Date 9-18-11	<sup>34</sup> Test Length 24	<sup>35</sup> Tbg. Pressure	<sup>36</sup> Csg. Pressure
<sup>37</sup> Choke Size	<sup>38</sup> Oil 65	<sup>39</sup> Water 444	<sup>40</sup> Gas 70		<sup>41</sup> Test Method Pmpg
<sup>42</sup> I hereby certify that the rules of the Oil Conservation Division have been complied with and that the information given above is true and complete to the best of my knowledge and belief. Signature: <i>Bev Hatfield</i>			OIL CONSERVATION DIVISION		
Printed name: BEV HATFIELD			Approved by: <i>T.L. Shogard</i>		
Title: Sr. Staff Engineering Tech			Title: Geologist		
E-mail Address: beverly.hatfield@apachecorp.com			Approval Date: 11/13/2011		
Date: 09/07/2011		Phone: (432) 818-1906			