

DISTRICT I
1625 N. French Dr., Hobbs, NM 88240

DISTRICT II
1301 W. Grand Avenue, Artesia, NM 88210

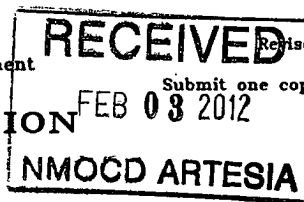
DISTRICT III
1000 Rio Brazos Rd., Aztec, NM 87410

DISTRICT IV
1220 S. St. Francis Dr., Santa Fe, NM 87505

State of New Mexico
Energy, Minerals and Natural Resources Department

OIL CONSERVATION DIVISION

1220 South St. Francis Dr.
Santa Fe, New Mexico 87505



Form C-102
Revised July 16, 2010
Submit one copy to appropriate District Office

WELL LOCATION AND ACREAGE DEDICATION PLAT

☐ AMENDED REPORT

| | | |
|--------------------------|---|------------------------------------|
| API Number 3001539056 | Pool Code 96210 | Pool Name Empire; Glorieta-Yeso |
| Property Code 38581 | Property Name PERE MARQUETTE 18 FEDERAL | Well Number 11 |
| OGRID No. 162683 | Operator Name CIMAREX ENERGY CO. OF COLORADO | Elevation 3677' |

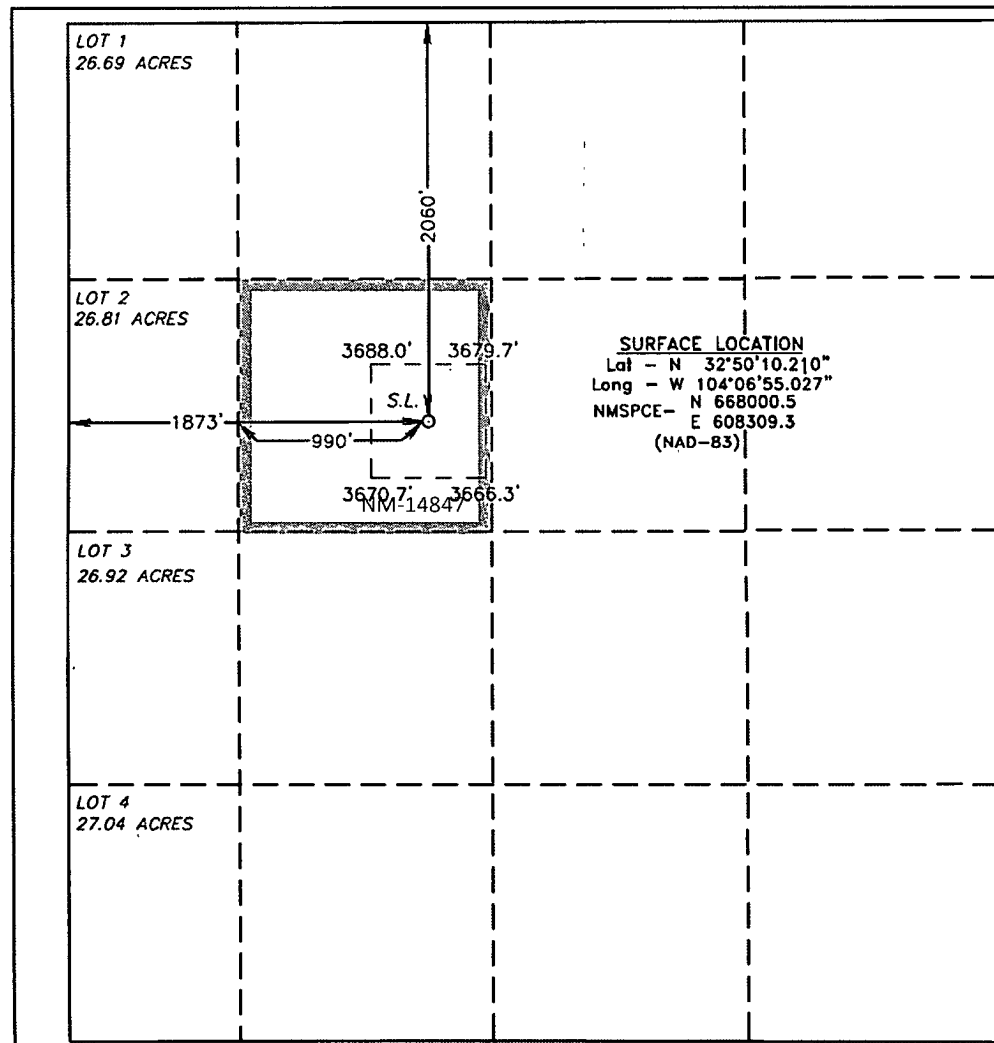
Surface Location

| UL or lot No. | Section | Township | Range | Lot Idn | Feet from the | North/South line | Feet from the | East/West line | County |
|---------------|---------|----------|-------|---------|---------------|------------------|---------------|----------------|--------|
| F | 18 | 17 S | 29 E | | 2060 | NORTH | 1873 | WEST | EDDY |

Bottom Hole Location If Different From Surface

| UL or lot No. | Section | Township | Range | Lot Idn | Feet from the | North/South line | Feet from the | East/West line | County |
|-----------------------|-----------------|--------------------|-----------|---------|---------------|------------------|---------------|----------------|--------|
| | | | | | | | | | |
| Dedicated Acres 40 | Joint or Infill | Consolidation Code | Order No. | | | | | | |

NO ALLOWABLE WILL BE ASSIGNED TO THIS COMPLETION UNTIL ALL INTERESTS HAVE BEEN CONSOLIDATED
OR A NON-STANDARD UNIT HAS BEEN APPROVED BY THE DIVISION



OPERATOR CERTIFICATION

I hereby certify that the information contained herein is true and complete to the best of my knowledge and belief, and that this organization either owns a working interest or unleased mineral interest in the land including the proposed bottom hole location or has a right to drill this well at this location pursuant to a contract with an owner of such a mineral or working interest, or to a voluntary pooling agreement or a compulsory pooling order heretofore entered by the division.

Signature _____ Date 1/30/2012

Terri Stathem

Printed Name
tstathem@cimarex.com

Email Address

SURVEYOR CERTIFICATION

I hereby certify that the well location shown on this plat was plotted from field notes of actual surveys made by me or under my supervision, and that the same is true and correct to the best of my belief.

Date Surveyed _____
Signature & Seal of Professional Surveyor

Certificate No. Gary L. Jones 7977

BASIN SURVEYS 23855