

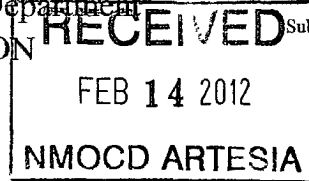
DISTRICT I
1625 N. French Dr., Hobbs, NM 88240
Phone: (575) 393-6161 Fax: (575) 393-0720

DISTRICT II
811 S. First St., Artesia, NM 88210
Phone: (575) 748-1283 Fax: (575) 748-9720

DISTRICT III
1000 Rio Brazos Road, Aztec, NM 87410
Phone: (505) 334-6178 Fax: (505) 334-6170

DISTRICT IV
1220 S. St. Francis Dr., Santa Fe, NM 87505
Phone: (505) 476-3460 Fax: (505) 476-3462

State of New Mexico
Energy, Minerals & Natural Resources Department
OIL CONSERVATION DIVISION
1220 South St. Francis Dr.
Santa Fe, New Mexico 87505



Form C-102
Revised August 1, 2011
Submit one copy to appropriate District Office

☐ AMENDED REPORT

WELL LOCATION AND ACREAGE DEDICATION PLAT

API Number 30-015-39922	Pool Code 96830	Pool Name Artesia ; Glorieta - Yeso
Property Code 308712	Property Name D STATE	Well Number 72
OGRID No. 873	Operator Name APACHE CORPORATION	Elevation 3685'

Surface Location

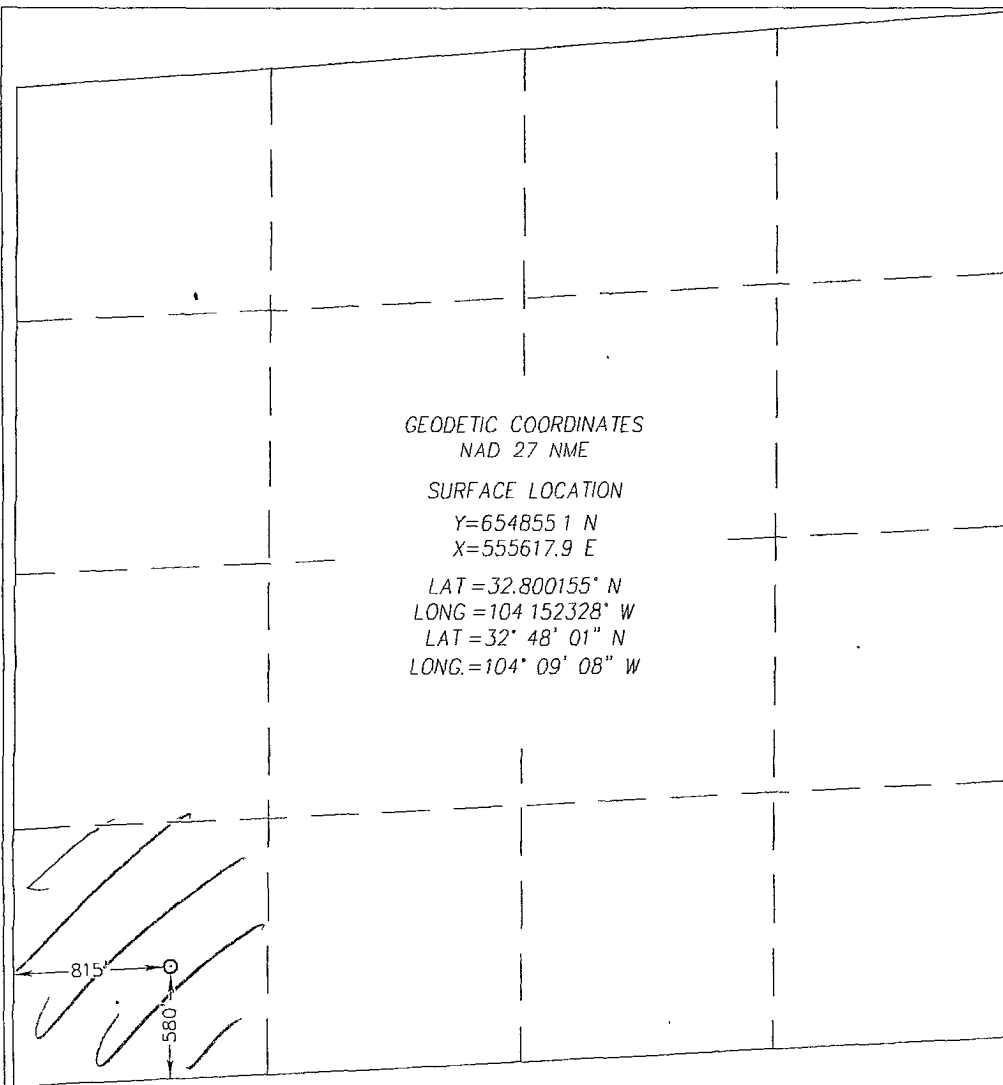
UL or lot No	Section	Township	Range	Lot Idn	Feet from the	North/South line	Feet from the	East/West line	County
M	26	17-S	28-E		580	SOUTH	815	WEST	EDDY

Bottom Hole Location If Different From Surface

UL or lot No.	Section	Township	Range	Lot Idn	Feet from the	North/South line	Feet from the	East/West line	County

Dedicated Acres 40	Joint or Infill	Consolidation Code	Order No.
------------------------------	-----------------	--------------------	-----------

NO ALLOWABLE WILL BE ASSIGNED TO THIS COMPLETION UNTIL ALL INTERESTS HAVE BEEN CONSOLIDATED OR A NON-STANDARD UNIT HAS BEEN APPROVED BY THE DIVISION



OPERATOR CERTIFICATION

I hereby certify that the information herein is true and complete to the best of my knowledge and belief, and that this organization either owns a working interest or unleased mineral interest in the land including the proposed bottom hole location or has a right to drill this well at this location pursuant to a contract with an owner of such mineral or working interest, or to a voluntary pooling agreement or a compulsory pooling order heretofore entered by the division.

Sorina L. Flores 2/9/12
Signature Date

Sorina L. Flores
Printed Name

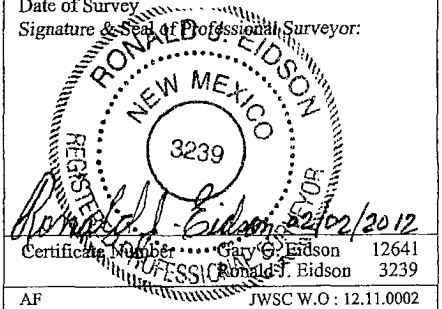
sorina.flores@apachecorp.com
E-mail Address

SURVEYOR CERTIFICATION

I hereby certify that the well location shown on this plat was plotted from field notes of actual surveys made by me or under my supervision, and that the same is true and correct to the best of my belief.

JANUARY 18, 2012

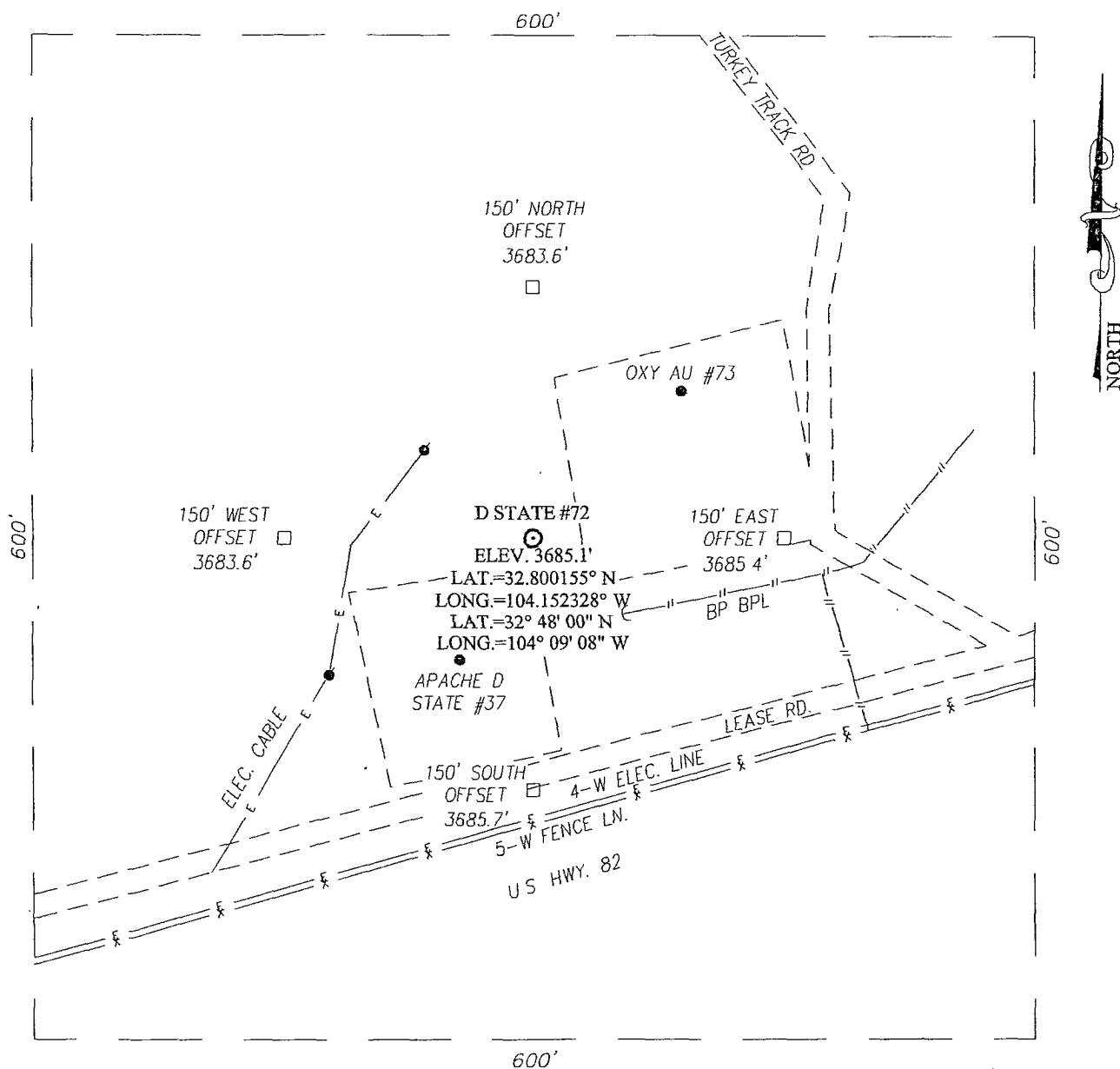
Date of Survey
Signature & Seal of Professional Surveyor:



SECTION 26, TOWNSHIP 17 SOUTH, RANGE 28 EAST, N.M.P.M.

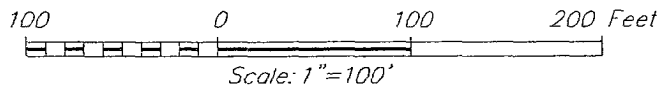
EDDY COUNTY

NEW MEXICO



DIRECTIONS TO LOCATION

FROM THE INTERSECTION OF U.S. HWY. #82 AND CO RD. #209 GO NORTH ON CO RD. #209 APPROX 200 FEET TURN LEFT AND GO WEST APPROX 300 FEET TO EXISTING D STATE #37 THIS LOCATION STAKE IS APPROX 85 FEET NORTHEAST OF THE #37 WELL HEAD



APACHE CORPORATION

D STATE #72 WELL
LOCATED 580 FEET FROM THE SOUTH LINE
AND 815 FEET FROM THE WEST LINE OF SECTION 26,
TOWNSHIP 17 SOUTH, RANGE 28 EAST, N.M.P.M.,
EDDY COUNTY, NEW MEXICO

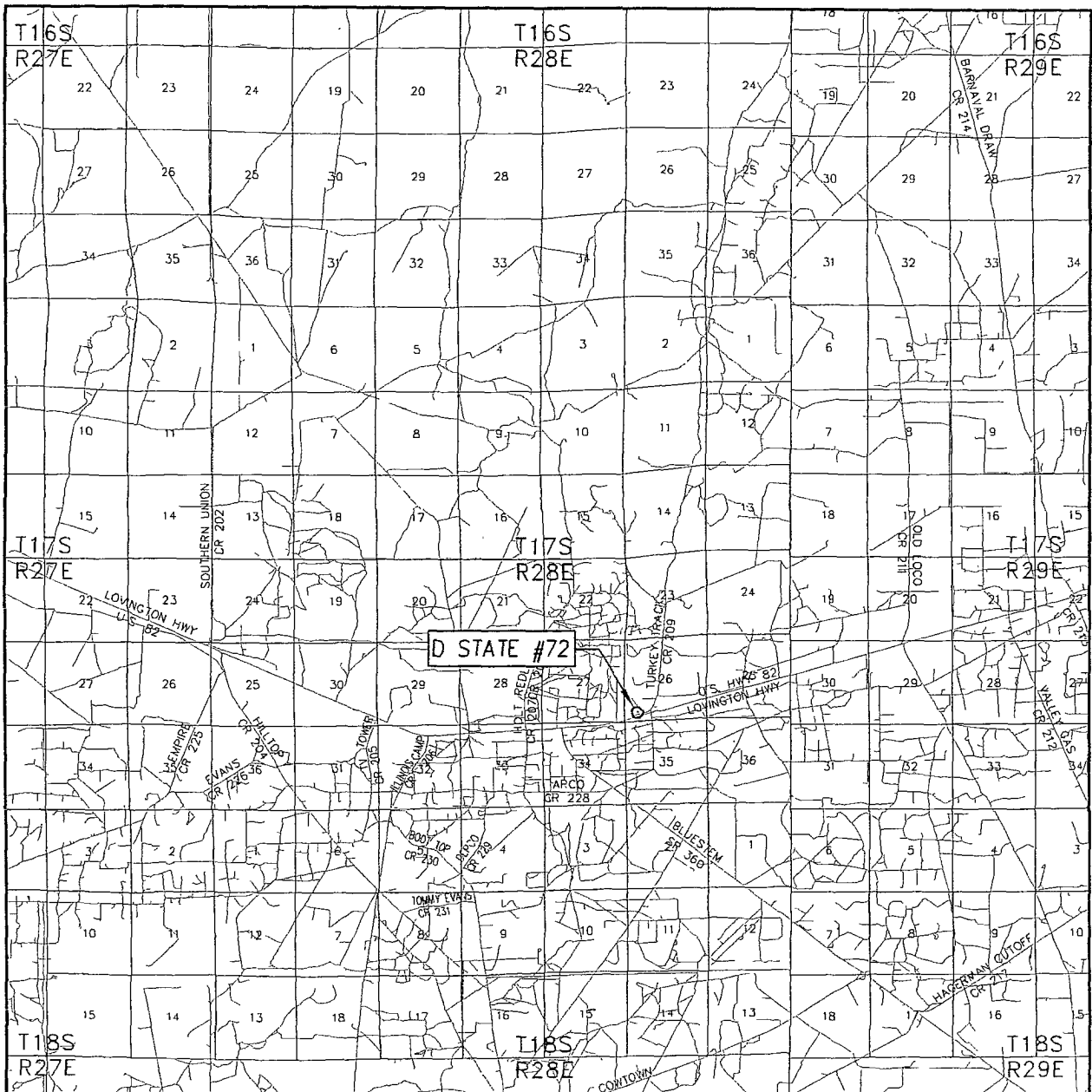
Survey Date: 1/18/12	Sheet 1 of 1 Sheets
W.O. Number. 12 11 0002	Dr By: AF Rev 1
Date: 1/30/12	Rel W.O.: 12110002 Scale: 1"=100'

PROVIDING SURVEYING SERVICES
SINCE 1946

JOHN WEST SURVEYING COMPANY


412 N. DAL PASO
HOBBS, N.M. 88240
(575) 393-3117

VICINITY MAP



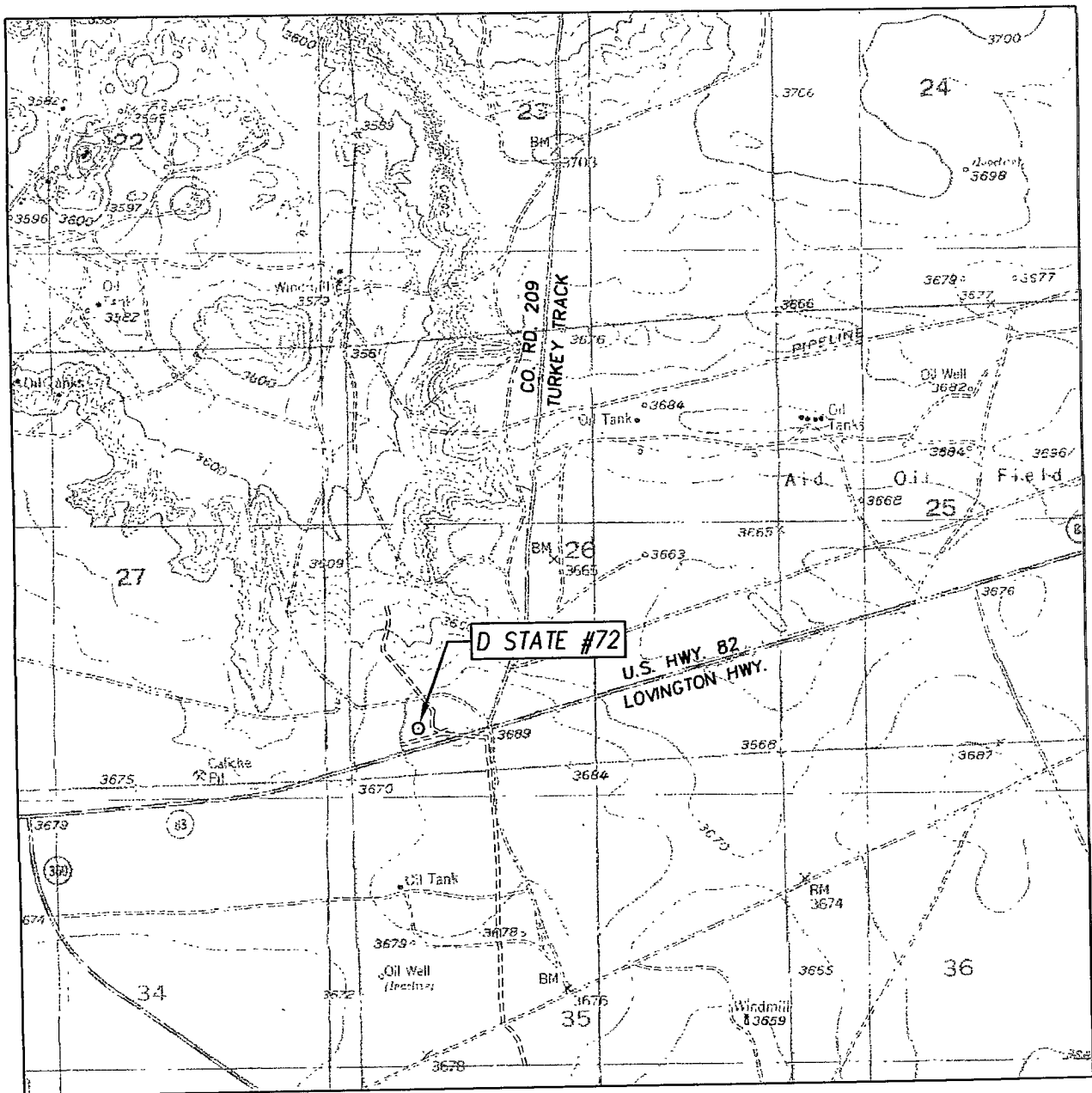
SCALE: 1" = 2 MILES

SEC. 26 TWP 17-S RGE. 28-E
 SURVEY N.M.P.M
 COUNTY EDDY STATE NEW MEXICO
 DESCRIPTION 580' FSL & 815' FWL
 ELEVATION 3685'
 OPERATOR APACHE CORPORATION
 LEASE D STATE



PROVIDING SURVEYING SERVICES
 SINCE 1946
JOHN WEST SURVEYING COMPANY
 412 N DAL PASO
 HOBBS, N.M. 88240
 (575) 393-3117

LOCATION VERIFICATION MAP



SCALE: 1" = 2000'

CONTOUR INTERVAL:
RED LAKE, N.M. - 10'

SEC. 26 TWP. 17-S RGE. 28-E

SURVEY _____ N.M.P.M.

COUNTY EDDY STATE NEW MEXICO

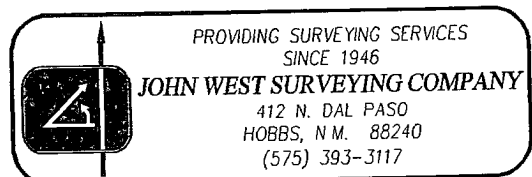
DESCRIPTION 580' FSL & 815' FWL

ELEVATION 3685'

OPERATOR APACHE CORPORATION

LEASE D STATE

U.S.G.S. TOPOGRAPHIC MAP
RED LAKE, N.M.



PROVIDING SURVEYING SERVICES
SINCE 1946

JOHN WEST SURVEYING COMPANY

412 N. DAL PASO
HOBBS, N.M. 88240
(575) 393-3117