

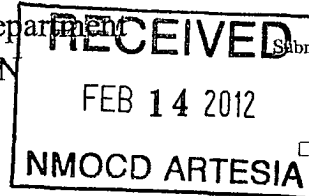
DISTRICT I  
1625 N. French Dr., Hobbs, NM 88240  
Phone: (575) 393-6161 Fax: (575) 393-0720

DISTRICT II  
811 E. First St., Artesia, NM 88210  
Phone: (575) 748-1283 Fax: (575) 748-9720

DISTRICT III  
1000 Rio Brazos Road, Aztec, NM 87410  
Phone: (505) 334-6178 Fax: (505) 334-6170

DISTRICT IV  
1220 S. St. Francis Dr., Santa Fe, NM 87505  
Phone: (505) 476-3460 Fax: (505) 476-3462

State of New Mexico  
Energy, Minerals & Natural Resources Department  
OIL CONSERVATION DIVISION  
1220 South St. Francis Dr.  
Santa Fe, New Mexico 87505



Form C-102  
Revised August 1, 2011  
Submit one copy to appropriate  
District Office

☐ AMENDED REPORT

WELL LOCATION AND ACREAGE DEDICATION PLAT

API Number <b>30-015-39924</b>	Pool Code <b>96830</b>	Pool Name <b>Artesia; Glorieta - Yeso</b>
Property Code <b>308712</b>	Property Name <b>D STATE</b>	Well Number <b>74</b>
OGRID No. <b>873</b>	Operator Name <b>APACHE CORPORATION</b>	Elevation <b>3676'</b>

Surface Location

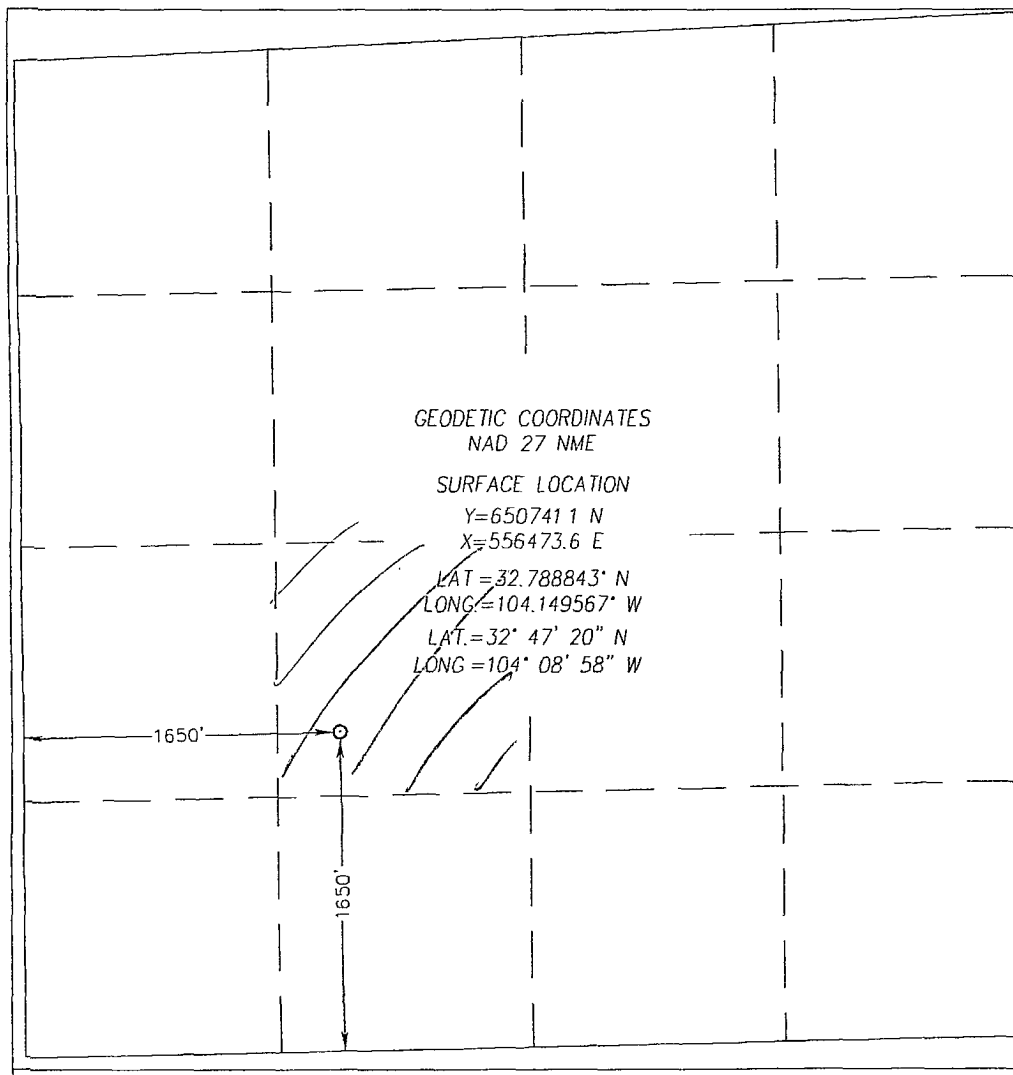
UL or lot No.	Section	Township	Range	Lot Idn	Feet from the	North/South line	Feet from the	East/West line	County
K	35	17-S	28-E		1650	SOUTH	1650	WEST	EDDY

Bottom Hole Location If Different From Surface

UL or lot No.	Section	Township	Range	Lot Idn	Feet from the	North/South line	Feet from the	East/West line	County

Dedicated Acres <b>40</b>	Joint or Infill	Consolidation Code	Order No.
------------------------------	-----------------	--------------------	-----------

NO ALLOWABLE WILL BE ASSIGNED TO THIS COMPLETION UNTIL ALL INTERESTS HAVE BEEN CONSOLIDATED OR A NON-STANDARD UNIT HAS BEEN APPROVED BY THE DIVISION



OPERATOR CERTIFICATION

I hereby certify that the information herein is true and complete to the best of my knowledge and belief, and that this organization either owns a working interest or unleased mineral interest in the land including the proposed bottom hole location or has a right to drill this well at this location pursuant to a contract with an owner of such mineral or working interest, or to a voluntary pooling agreement or a compulsory pooling order heretofore entered by the division.

*Sorina P Flores* 2/9/12  
Signature Date

Sorina Flores  
Printed Name

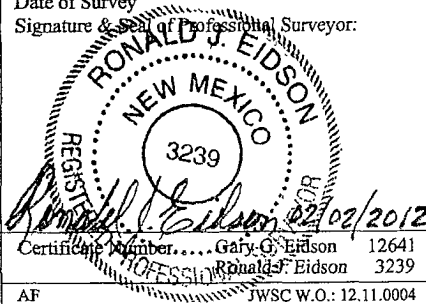
Sorina.Flores@apachecorp.com  
E-mail Address

SURVEYOR CERTIFICATION

I hereby certify that the well location shown on this plat was plotted from field notes of actual surveys made by me or under my supervision, and that the same is true and correct to the best of my belief.

JANUARY 17, 2012

Date of Survey  
Signature & Seal of Professional Surveyor:



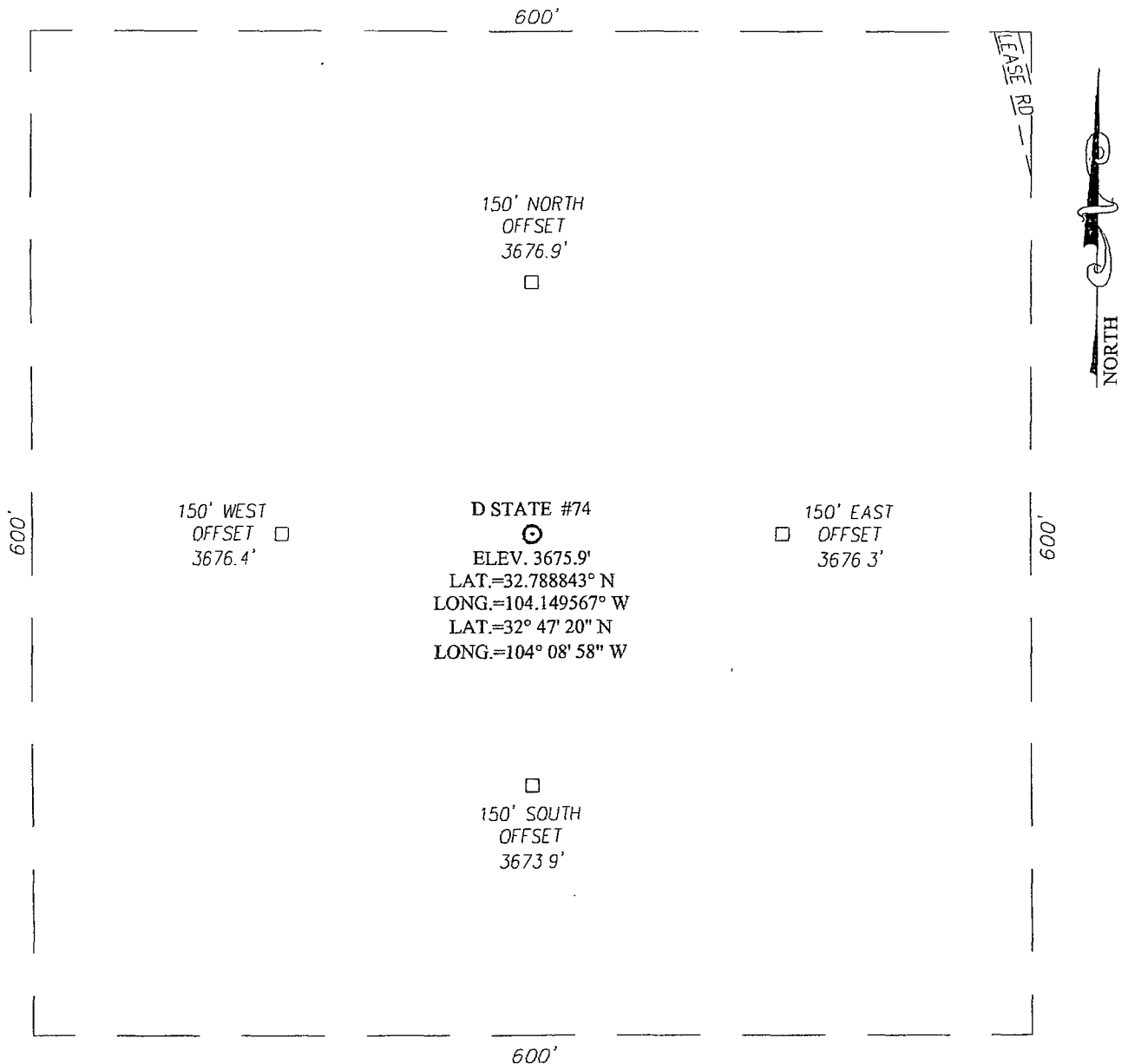
Certificate Number... Gary G. Eidson 12641  
Ronald J. Eidson 3239

AF JWSC W.O.: 12.11.0004

# SECTION 35, TOWNSHIP 17 SOUTH, RANGE 28 EAST, N.M.P.M.

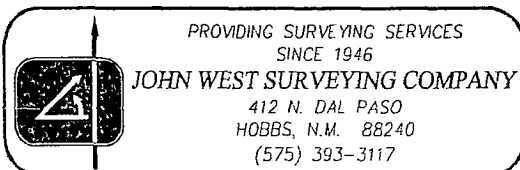
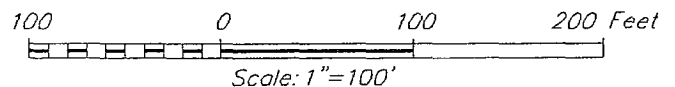
EDDY COUNTY

NEW MEXICO



## DIRECTIONS TO LOCATION

FROM THE INTERSECTION OF U.S HWY #82 AND CO.  
RD #209 (TURKEY TRACK) GO SOUTH ON LEASE  
ROAD APPROX 0.7 MILES VEER LEFT AND GO  
SOUTHEAST APPROX. 200 FEET; THEN SOUTH  
APPROX 300 FEET THIS LOCATION STAKE IS  
APPROX 330 FEET WEST OF THE LEASE ROAD.

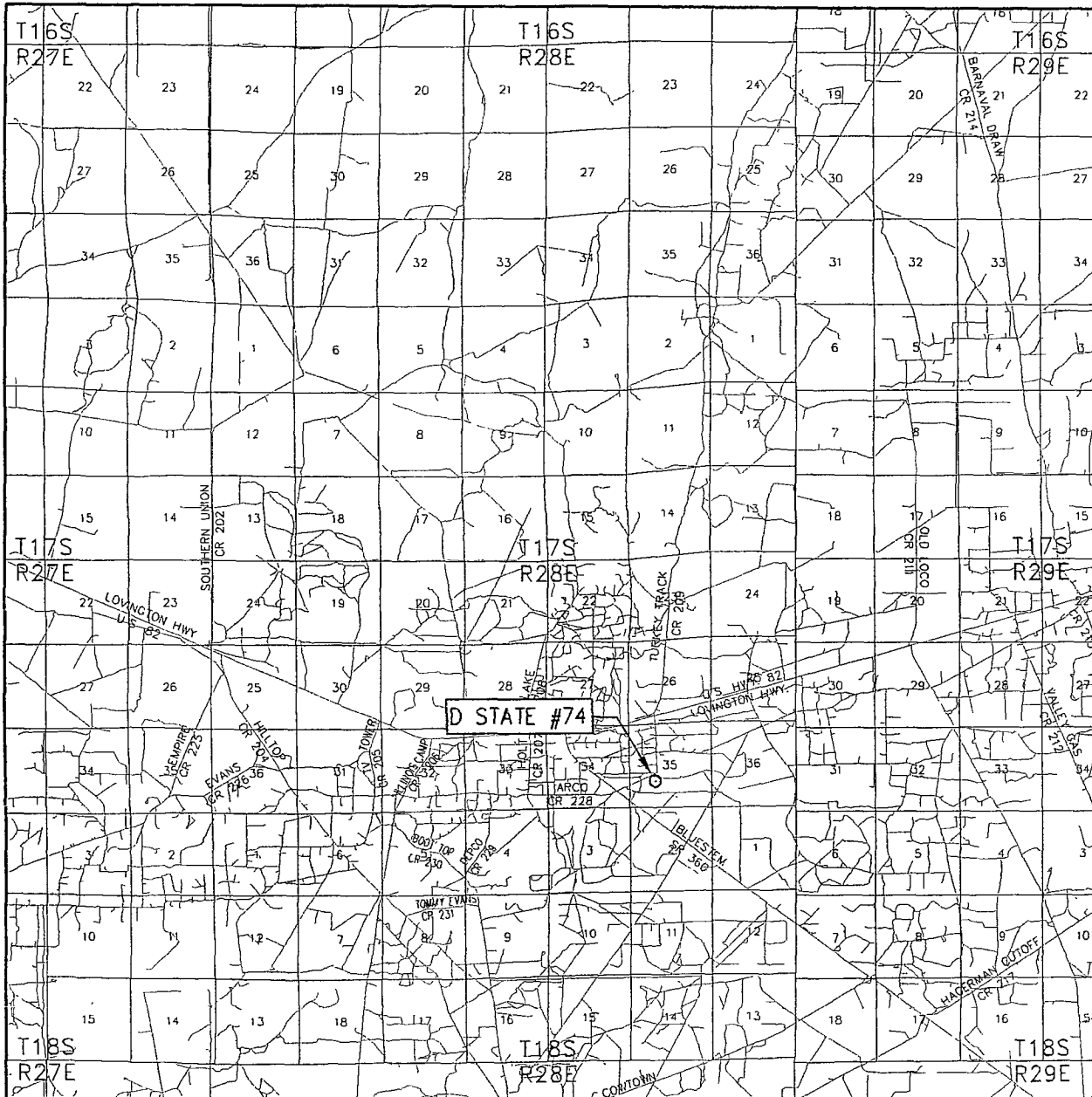


## APACHE CORPORATION

D STATE #74 WELL  
LOCATED 1650 FEET FROM THE SOUTH LINE  
AND 1650 FEET FROM THE WEST LINE OF SECTION 35,  
TOWNSHIP 17 SOUTH, RANGE 28 EAST, N.M.P.M.,  
EDDY COUNTY, NEW MEXICO

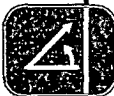
Survey Date: 1/17/12	Sheet 1 of 1 Sheets
W.O. Number. 12 11.0004	Dr By AF Rev 1
Date: 1/31/12	Rel. W.O. 12110004 Scale 1"=100'

# VICINITY MAP



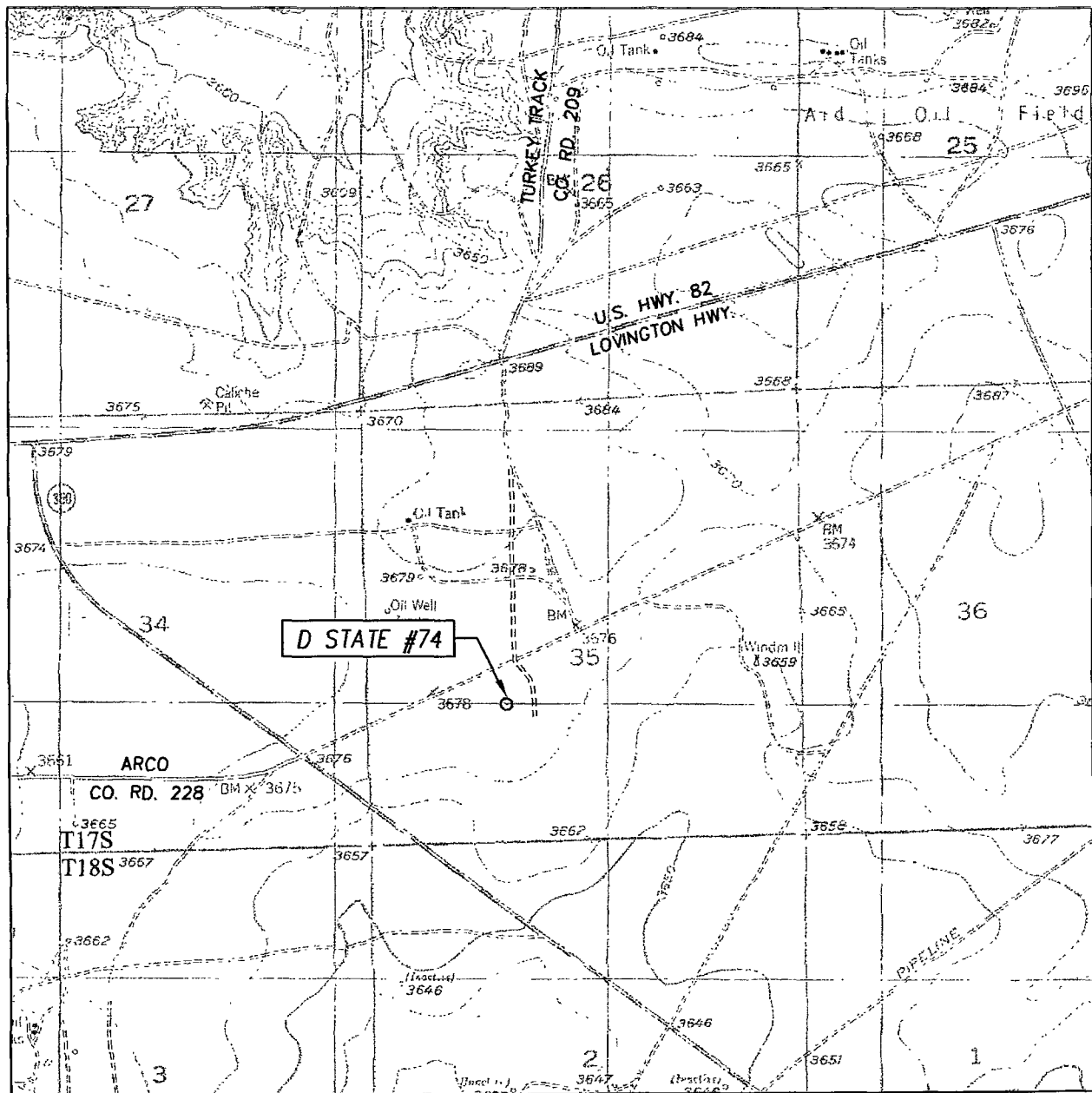
SCALE: 1" = 2 MILES

SEC. 35 TWP 17-S RGE 28-E  
 SURVEY N.M.P.M.  
 COUNTY EDDY STATE NEW MEXICO  
 DESCRIPTION 1650' FSL & 1650' FWL  
 ELEVATION 3676'  
 OPERATOR APACHE CORPORATION  
 LEASE D STATE



PROVIDING SURVEYING SERVICES  
 SINCE 1946  
**JOHN WEST SURVEYING COMPANY**  
 412 N. DAL PASO  
 HOBBS, N.M. 88240  
 (575) 393-3117

# LOCATION VERIFICATION MAP



SCALE: 1" = 2000'

CONTOUR INTERVAL:  
RED LAKE, N.M. - 10'

SEC. 35 TWP. 17-S RGE. 28-E

SURVEY N.M.P.M.

COUNTY EDDY STATE NEW MEXICO

DESCRIPTION 1650' FSL & 1650' FWL

ELEVATION 3676'

OPERATOR APACHE CORPORATION

LEASE D STATE

U.S.G.S. TOPOGRAPHIC MAP  
RED LAKE, N.M.

