

30-015-39805

Mewbourne Oil Co

Eddy County, New Mexico

Sec 7, T17S, R29E

Empire 7 MP Federal #1H

Wellbore #1

Survey: MWD

DDC Survey Report

30 April, 2012



DDC
Survey Report



Company:	Mewbourne Oil Co	Local Co-ordinate Reference:	Well Empire 7 MP Federal #1H
Project:	Eddy County, New Mexico	TVD Reference:	WELL @ 3718.0usft (Patterson UTI #101)
Site:	Sec 7, T17S, R29E	MD Reference:	WELL @ 3718 0usft (Patterson UTI #101)
Well:	Empire 7 MP Federal #1H	North Reference:	Grid
Wellbore:	Wellbore #1	Survey Calculation Method:	Minimum Curvature
Design:	Wellbore #1	Database:	EDM 5000.1 Single User Db

Project:	Eddy County, New Mexico		
Map System:	US State Plane 1927 (Exact solution)	System Datum:	Mean Sea Level
Geo Datum:	NAD 1927 (NADCON CONUS)		
Map Zone:	New Mexico East 3001		

Site:	Sec 7, T17S, R29E				
Site Position:	Northing:	670,538.10 usft	Latitude:	32° 50' 35.569 N	
From:	Map	Easting:	565,344.37 usft	Longitude:	104° 7' 14.058 W
Position Uncertainty:	0.0 usft	Slot Radius:	13-3/16 "	Grid Convergence:	0.12 °

Well:	Empire 7 MP Federal #1H					
Well Position	+N/-S	0.0 usft	Northing:	670,538.10 usft	Latitude:	32° 50' 35.569 N
	+E/-W	0.0 usft	Easting:	565,344.37 usft	Longitude:	104° 7' 14.058 W
Position Uncertainty	0.0 usft	Wellhead Elevation:	usft	Ground Level:	3,699.0 usft	

Wellbore:	Wellbore #1		
------------------	-------------	--	--

Magnetics	Model Name	Sample Date	Declination ($^{\circ}$)	Dip Angle ($^{\circ}$)	Field Strength (nT)
	IGRF2010	2/23/2012	7 80	60 65	48,857

Design:	Wellbore #1		
----------------	-------------	--	--

Audit Notes:					
Version:	1.0	Phase:	ACTUAL	Tie On Depth:	0.0

Vertical Section	Depth From (TVD) (usft)	+N/-S (usft)	+E/-W (usft)	Direction ($^{\circ}$)
	0.0	0.0	0.0	89.87

Survey Program		Date			
From (usft)	To (usft)	Survey (Wellbore)	Tool Name	Description	
100.0	3,431.0	GYRO (Wellbore #1)	Good_gyro	Good Gyro	
3,501.0	8,241.0	MWD (Wellbore #1)	MWD default	MWD - Standard	

Measured Depth (usft)	Inclination ($^{\circ}$)	Azimuth ($^{\circ}$)	Vertical Depth (usft)	+N/-S (usft)	+E/-W (usft)	Vertical Section (usft)	Dogleg Rate ($^{\circ}$ /100usft)	Build Rate ($^{\circ}$ /100usft)	Turn Rate ($^{\circ}$ /100usft)	
Tie In @ 3431' MD / 3431' TVD										
3,431.0	0.69	353.93	3,430.8	23.8	8.3	8.4	0.00	0.00	0.00	
3,501.0	0.80	344.00	3,500.8	24.7	8.2	8.2	0.24	0.15	-14.19	
3,532.0	0.60	333.40	3,531.8	25.1	8.0	8.1	0.77	-0.65	-34.19	
3,563.0	2.00	82.60	3,562.8	25.3	8.5	8.6	7.32	4.52	352.26	
3,594.0	5.80	89.60	3,593.7	25.4	10.6	10.7	12.33	12.26	22.58	
3,625.0	9.70	89.60	3,624.4	25.4	14.8	14.8	12.58	12.58	0.00	
3,656.0	13.60	88.90	3,654.7	25.5	21.0	21.1	12.59	12.58	-2.26	
3,688.0	17.10	89.10	3,685.6	25.6	29.5	29.6	10.94	10.94	0.63	
3,719.0	20.00	90.50	3,715.0	25.7	39.4	39.4	9.46	9.35	4.52	

DDC
Survey Report



Company:	Mewbourne Oil Co	Local Co-ordinate Reference:	Well Empire 7 MP Federal #1H
Project:	Eddy County, New Mexico	TVD Reference:	WELL @ 3718.0usft (Patterson UTI #101)
Site:	Sec 7, T17S; R29E	MD Reference:	WELL @ 3718.0usft (Patterson UTI #101)
Well:	Empire 7 MP Federal #1H	North Reference:	Grid
Wellbore:	Wellbore #1	Survey Calculation Method:	Minimum Curvature
Design:	Wellbore #1	Database:	EDM 5000.1 Single User Db

Measured Depth (usft)	Inclination (°)	Azimuth (°)	Vertical Depth (usft)	+N/-S (usft)	+E/-W (usft)	Vertical Section (usft)	Dogleg Rate (°/100usft)	Build Rate (°/100usft)	Turn Rate (°/100usft)	
3,750.0	23.60	91.50	3,743.8	25.5	50.9	50.9	11.67	11.61	3.23	
3,782.0	27.40	90.30	3,772.6	25.3	64.6	64.7	11.98	11.88	-3.75	
3,813.0	31.10	89.30	3,799.7	25.3	79.8	79.8	12.04	11.94	-3.23	
3,844.0	34.20	88.70	3,825.8	25.6	96.5	96.6	10.05	10.00	-1.94	
3,876.0	37.50	88.40	3,851.7	26.1	115.2	115.3	10.33	10.31	-0.94	
3,907.0	40.50	88.70	3,875.8	26.6	134.7	134.8	9.70	9.68	0.97	
3,938.0	42.90	90.50	3,899.0	26.7	155.4	155.4	8.65	7.74	5.81	
3,969.0	46.10	91.70	3,921.1	26.3	177.1	177.1	10.67	10.32	3.87	
4,001.0	49.80	91.70	3,942.5	25.6	200.8	200.9	11.56	11.56	0.00	
4,032.0	54.10	90.70	3,961.6	25.1	225.2	225.3	14.10	13.87	-3.23	
Crossed Hard Line @ 4054' MD / 3974' TVD										
4,054.0	56.51	90.20	3,974.1	24.9	243.3	243.4	11.13	10.97	-2.28	
4,063.0	57.50	90.00	3,979.0	24.9	250.9	250.9	11.13	10.97	-2.19	
4,095.0	60.80	88.70	3,995.4	25.2	278.3	278.4	10.89	10.31	-4.06	
4,126.0	65.30	88.60	4,009.5	25.9	306.0	306.0	14.52	14.52	-0.32	
4,157.0	68.80	88.60	4,021.6	26.6	334.5	334.5	11.29	11.29	0.00	
4,188.0	73.70	88.70	4,031.5	27.3	363.8	363.9	15.81	15.81	0.32	
4,220.0	78.40	89.30	4,039.2	27.8	394.9	394.9	14.80	14.69	1.88	
4,236.0	80.50	89.40	4,042.2	28.0	410.6	410.7	13.14	13.13	0.63	
4,310.0	87.90	92.60	4,049.6	26.7	484.1	484.2	10.88	10.00	4.32	
4,342.0	88.10	91.90	4,050.7	25.4	516.1	516.2	2.27	0.63	-2.19	
4,373.0	90.00	91.50	4,051.3	24.5	547.1	547.1	6.26	6.13	-1.29	
4,404.0	90.20	91.70	4,051.2	23.7	578.1	578.1	0.91	0.65	0.65	
4,436.0	89.80	92.20	4,051.2	22.6	610.0	610.1	2.00	-1.25	1.56	
4,468.0	89.70	92.10	4,051.3	21.4	642.0	642.1	0.44	-0.31	-0.31	
4,500.0	89.60	91.70	4,051.5	20.3	674.0	674.0	1.29	-0.31	-1.25	
4,532.0	89.10	92.10	4,051.9	19.3	706.0	706.0	2.00	-1.56	1.25	
4,564.0	89.80	90.30	4,052.2	18.6	738.0	738.0	6.04	2.19	-5.63	
4,595.0	89.50	90.00	4,052.4	18.5	769.0	769.0	1.37	-0.97	-0.97	
4,627.0	89.10	90.70	4,052.8	18.3	801.0	801.0	2.52	-1.25	2.19	
4,659.0	88.80	90.10	4,053.4	18.1	833.0	833.0	2.10	-0.94	-1.88	
4,691.0	89.70	89.60	4,053.8	18.2	865.0	865.0	3.22	2.81	-1.56	
4,723.0	89.30	89.40	4,054.1	18.4	897.0	897.0	1.40	-1.25	-0.63	
4,755.0	89.20	88.90	4,054.5	18.9	929.0	929.0	1.59	-0.31	-1.56	
4,786.0	90.20	88.40	4,054.7	19.6	959.9	960.0	3.61	3.23	-1.61	
4,817.0	90.00	88.20	4,054.6	20.6	990.9	991.0	0.91	-0.65	-0.65	
4,848.0	89.80	88.00	4,054.7	21.6	1,021.9	1,022.0	0.91	-0.65	-0.65	
4,878.0	89.30	87.30	4,054.9	22.8	1,051.9	1,051.9	2.87	-1.67	-2.33	
4,909.0	88.70	86.80	4,055.4	24.4	1,082.8	1,082.9	2.52	-1.94	-1.61	
4,938.0	89.30	87.70	4,055.9	25.8	1,111.8	1,111.9	3.73	2.07	3.10	
5,000.0	90.00	88.60	4,056.3	27.8	1,173.8	1,173.8	1.84	1.13	1.45	
5,062.0	89.60	87.80	4,056.5	29.8	1,235.7	1,235.8	1.44	-0.65	-1.29	
5,124.0	89.50	89.10	4,057.0	31.4	1,297.7	1,297.8	2.10	-0.16	2.10	

DDC
Survey Report



Company:	Mewbourne Oil Co	Local Co-ordinate Reference:	Well Empire 7 MP Federal #1H
Project:	Eddy County, New Mexico	TVD Reference:	WELL @ 3718.0usft (Patterson UTI #101)
Site:	Sec 7, T17S, R29E	MD Reference:	WELL @ 3718.0usft (Patterson UTI #101)
Well:	Empire 7 MP Federal #1H	North Reference:	Grid
Wellbore:	Wellbore #1	Survey Calculation Method:	Minimum Curvature
Design:	Wellbore #1	Database:	EDM 5000.1 Single User Db

Measured Depth (usft)	Inclination (°)	Azimuth (°)	Vertical Depth (usft)	+N-S (usft)	+E-W (usft)	Vertical Section (usft)	Dogleg Rate (°/100usft)	Build Rate (°/100usft)	Turn Rate (°/100usft)
5,186.0	89.80	90.50	4,057.4	31.7	1,359.7	1,359.8	2.31	0.48	2.26
5,247.0	89.20	90.00	4,057.9	31.4	1,420.7	1,420.8	1.28	-0.98	-0.82
5,308.0	88.20	89.40	4,059.3	31.7	1,481.7	1,481.8	1.91	-1.64	-0.98
5,339.0	87.90	89.80	4,060.4	31.9	1,512.7	1,512.7	1.61	-0.97	1.29
5,370.0	89.50	90.10	4,061.1	32.0	1,543.7	1,543.7	5.25	5.16	0.97
5,399.0	90.80	90.50	4,061.0	31.8	1,572.7	1,572.7	4.69	4.48	1.38
5,431.0	90.30	90.50	4,060.7	31.5	1,604.7	1,604.7	1.56	-1.56	0.00
5,463.0	90.00	90.10	4,060.6	31.4	1,636.7	1,636.7	1.56	-0.94	-1.25
5,527.0	90.80	90.50	4,060.2	31.0	1,700.7	1,700.7	1.40	1.25	0.63
5,590.0	90.80	90.10	4,059.3	30.7	1,763.6	1,763.7	0.63	0.00	-0.63
5,653.0	90.20	89.60	4,058.7	30.9	1,826.6	1,826.7	1.24	-0.95	-0.79
5,717.0	89.40	89.40	4,059.0	31.4	1,890.6	1,890.7	1.29	-1.25	-0.31
5,780.0	90.50	89.80	4,059.0	31.9	1,953.6	1,953.7	1.86	1.75	0.63
5,844.0	90.20	90.30	4,058.6	31.8	2,017.6	2,017.7	0.91	-0.47	0.78
5,907.0	90.10	90.10	4,058.5	31.6	2,080.6	2,080.7	0.35	-0.16	-0.32
5,971.0	89.90	90.00	4,058.5	31.5	2,144.6	2,144.7	0.35	-0.31	-0.16
6,034.0	89.10	90.00	4,059.0	31.5	2,207.6	2,207.7	1.27	-1.27	0.00
6,098.0	88.60	89.40	4,060.3	31.9	2,271.6	2,271.7	1.22	-0.78	-0.94
6,161.0	88.10	90.10	4,062.1	32.1	2,334.6	2,334.7	1.37	-0.79	1.11
6,224.0	87.80	90.30	4,064.4	31.9	2,397.5	2,397.6	0.57	-0.48	0.32
6,287.0	88.90	90.70	4,066.2	31.4	2,460.5	2,460.6	1.86	1.75	0.63
6,351.0	90.30	90.50	4,066.6	30.7	2,524.5	2,524.6	2.21	2.19	-0.31
6,414.0	89.30	90.10	4,066.8	30.4	2,587.5	2,587.6	1.71	-1.59	-0.63
6,478.0	90.00	90.50	4,067.2	30.0	2,651.5	2,651.6	1.26	1.09	0.63
6,541.0	91.00	91.50	4,066.7	28.9	2,714.5	2,714.6	2.24	1.59	1.59
6,605.0	90.40	90.50	4,065.9	27.8	2,778.5	2,778.5	1.82	-0.94	-1.56
6,669.0	89.90	91.00	4,065.7	27.0	2,842.5	2,842.5	1.10	-0.78	0.78
6,732.0	89.60	91.20	4,066.0	25.8	2,905.5	2,905.5	0.57	-0.48	0.32
6,795.0	88.60	91.20	4,067.0	24.4	2,968.4	2,968.5	1.59	-1.59	0.00
6,859.0	88.20	90.30	4,068.8	23.6	3,032.4	3,032.4	1.54	-0.63	-1.41
6,922.0	87.70	89.40	4,071.0	23.8	3,095.4	3,095.4	1.63	-0.79	-1.43
6,986.0	88.60	89.80	4,073.1	24.2	3,159.3	3,159.4	1.54	1.41	0.63
7,049.0	88.20	89.40	4,074.9	24.7	3,222.3	3,222.3	0.90	-0.63	-0.63
7,113.0	89.60	89.10	4,076.1	25.5	3,286.3	3,286.3	2.24	2.19	-0.47
7,177.0	89.90	89.60	4,076.4	26.2	3,350.3	3,350.3	0.91	0.47	0.78
7,240.0	89.30	90.10	4,076.8	26.4	3,413.3	3,413.3	1.24	-0.95	0.79
7,304.0	90.90	89.60	4,076.7	26.6	3,477.3	3,477.3	2.62	2.50	-0.78
7,368.0	91.00	90.00	4,075.6	26.8	3,541.3	3,541.3	0.64	0.16	0.63
7,431.0	90.60	89.60	4,074.8	27.0	3,604.3	3,604.3	0.90	-0.63	-0.63
7,495.0	90.20	88.60	4,074.3	28.0	3,668.2	3,668.3	1.68	-0.63	-1.56
7,559.0	90.60	90.50	4,073.9	28.5	3,732.2	3,732.3	3.03	0.63	2.97
7,623.0	90.10	90.50	4,073.5	27.9	3,796.2	3,796.3	0.78	-0.78	0.00
7,686.0	89.50	90.00	4,073.7	27.7	3,859.2	3,859.3	1.24	-0.95	-0.79
7,750.0	89.30	90.00	4,074.4	27.7	3,923.2	3,923.3	0.31	-0.31	0.00

DDC
Survey Report



Company:	Mewbourne Oil Co	Local Co-ordinate Reference:	Well Empire 7 MP Federal #1H
Project:	Eddy County, New Mexico	TVD Reference:	WELL @ 3718.0usft (Patterson UTI #101)
Site:	Sec 7, T17S, R29E	MD Reference:	WELL @ 3718 0usft (Patterson UTI #101)
Well:	Empire 7 MP Federal #1H	North Reference:	Grid
Wellbore:	Wellbore #1	Survey Calculation Method:	Minimum Curvature
Design:	Wellbore #1	Database:	EDM 5000 1 Single User Db

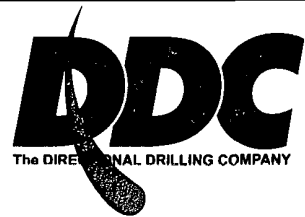
Measured Depth (usft)	Inclination (°)	Azimuth (°)	Vertical Depth (usft)	+N/-S (usft)	+E/-W (usft)	Vertical Section (usft)	Dogleg Rate (%/100usft)	Build Rate (%/100usft)	Turn Rate (%/100usft)
7,813.0	88.70	89.80	4,075.5	27.8	3,986.2	3,986.3	1.00	-0.95	-0.32
7,877.0	88.60	89.40	4,077.0	28.2	4,050.2	4,050.3	0.64	-0.16	-0.63
7,940.0	89.00	90.70	4,078.3	28.2	4,113.2	4,113.2	2.16	0.63	2.06
8,004.0	88.60	90.50	4,079.6	27.5	4,177.2	4,177.2	0.70	-0.63	-0.31
8,067.0	87.80	89.60	4,081.6	27.4	4,240.1	4,240.2	1.91	-1.27	-1.43
8,131.0	88.60	91.20	4,083.6	27.0	4,304.1	4,304.1	2.79	1.25	2.50
8,194.0	88.20	90.30	4,085.4	26.2	4,367.1	4,367.1	1.56	-0.63	-1.43
TD @ 8241' MD / 4087' TVD									
8,241.0	88.20	90.30	4,086.9	25.9	4,414.0	4,414.1	0.00	0.00	0.00

Measured Depth (usft)	Vertical Depth (usft)	Local Coordinates		Comment
		+N/-S (usft)	+E/-W (usft)	
3,431.0	3,430.8	23.8	8.3	Tie In @ 3431' MD / 3431' TVD
4,054.0	3,974.1	24.9	243.3	Crossed Hard Line @ 4054' MD / 3974' TVD
8,241.0	4,086.9	25.9	4,414.0	TD @ 8241' MD / 4087' TVD

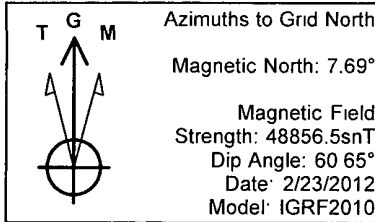
Checked By: _____ Approved By: _____ Date: _____

Company Name: Mewbourne Oil Co
 Empire 7 MP Federal #1H
 Eddy County, New Mexico
 Rig: Patterson UTI #101
 Created By: Dina Chance
 Date: 3/22/2012

Empire 7 MP Federal #1H
 Eddy County, New Mexico
 Q110662 & WT-12136



Mewbourne Oil Company

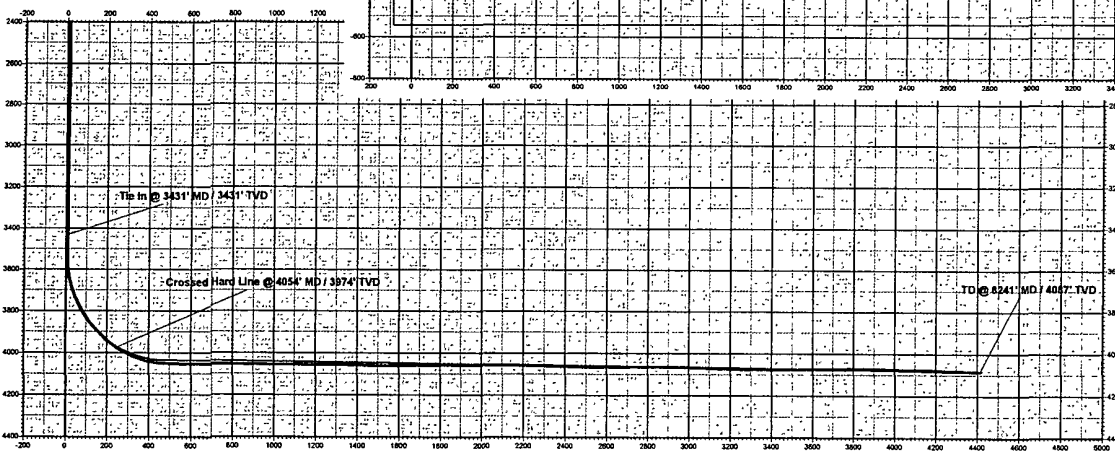
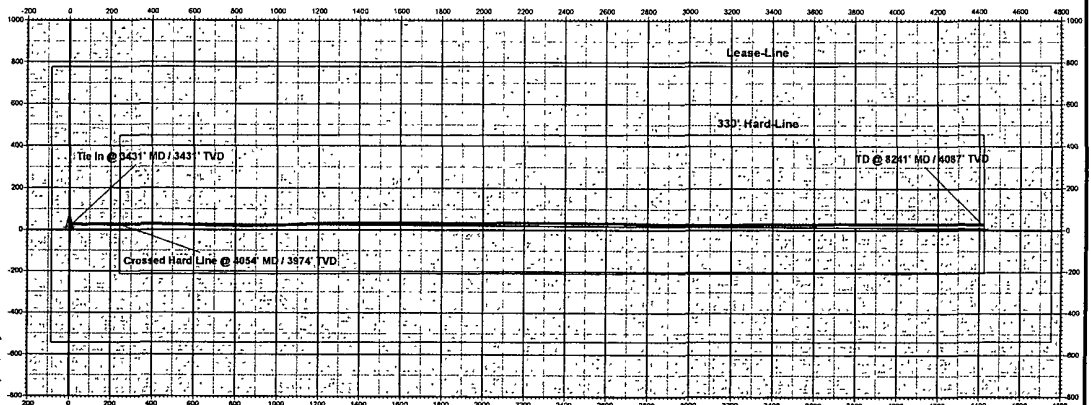


WELL DETAILS Empire 7 MP Federal #1H					
		Ground Level	3699.0		
+N/-S	+E/-W	Northing	Easting	Latitude	Longitude
0.0	0.0	670538.10	565344.37	32° 50' 35.969 N	104° 7' 14.056 W

ANNOTATIONS									
MD	Inc	Az	TVD	+N/-S	+E/-W	V Sect	Departure	Annotation	
3451.0	0.69	355.93	3430.9	23.8	8.3	3.4	37.7	Tie In @ 3451' MD / 3431' TVD	
4054.0	66.61	90.30	3974.1	24.8	243.3	245.4	374.7	Crossed Hard Line @ 4054' MD / 3974' TVD	
8241.0	88.20	90.30	4086.9	25.9	4414.0	4414.1	4445.9	TD @ 8241' MD / 4087' TVD	

DESIGN TARGET DETAILS							
Name	TVD	+N/-S	+E/-W	Northing	Easting	Latitude	Longitude
PBHL Empire 7 MP Federal #1H - plan hits target center	4083.0	10.1	4424.1	670548.20	569769.50	32° 50' 35.578 N	104° 6' 22.290 W

PROJECT DETAILS. Eddy County, New Mexico
 Geodetic System: US State Plane 1927 (Exact solution)
 Datum: NAD 1927 (NADCON CONUS)
 Ellipsoid: Clarke 1866
 Zone: New Mexico East 3001
 System Datum: Mean Sea Level





Company: Mewbourne Oil Company

Lease/Well: Empire "7" MP Fed/1H

Location: 16 Miles E of Artesia

Rig Name: Patterson #101

State/County: New Mexico/Eddy

Latitude: 32.84

GRID North is 0.12 Degrees East of True North

VS-Azi: 0.00 Degrees



Depth Reference : RKB= 16 1/2 Feet

DRILLOG HA GYRO SURVEY CALCULATIONS

Filename: empire 7 mp fed #1h_ed.ut

Minimum Curvature Method

Report Date/Time: 3/22/2012 / 10:39

Vaughn Energy Services

Gardendale, Texas

432-563-5444

Surveyor: Seth Hardin

Empire "7" MP Fed 1H / API 30-015-39805

Measured Depth FT	Incl Angle Deg	Drift Direction Deg	TVD FT	+N/-S FT	+E/-W FT	Vertical Section FT	Closure Distance FT	Closure Direction Deg	Dogleg Severity Deg/100
0.00	0.00	0.00	0.00	0.00	0.00	0.00	0.00	0.00	****
100.00	0.31	94.35	100.00	-0.02	0.27	-0.02	0.27	94.35	0.31
200.00	0.47	134.13	200.00	-0.33	0.84	-0.33	0.90	111.35	0.30
300.00	0.41	100.87	299.99	-0.68	1.48	-0.68	1.63	114.68	0.26
400.00	0.42	81.67	399.99	-0.69	2.19	-0.69	2.30	107.53	0.14
500.00	0.53	38.47	499.99	-0.28	2.85	-0.28	2.86	95.54	0.37
600.00	0.82	47.62	599.98	0.57	3.66	0.57	3.71	81.16	0.31
700.00	0.73	56.87	699.97	1.40	4.73	1.40	4.93	73.49	0.16
800.00	0.77	76.59	799.96	1.90	5.91	1.90	6.21	72.15	0.26
900.00	0.84	92.12	899.95	2.03	7.30	2.03	7.58	74.45	0.23
1000.00	0.88	95.77	999.94	1.93	8.80	1.93	9.01	77.65	0.07
1100.00	0.76	96.70	1099.93	1.77	10.22	1.77	10.37	80.16	0.13
1200.00	0.61	83.83	1199.93	1.75	11.40	1.75	11.54	81.26	0.21
1300.00	0.58	94.32	1299.92	1.77	12.43	1.77	12.56	81.89	0.11
1400.00	0.24	88.28	1399.92	1.74	13.14	1.74	13.26	82.46	0.34
1500.00	0.21	20.04	1499.92	1.91	13.41	1.91	13.55	81.88	0.25
1600.00	0.39	16.81	1599.92	2.41	13.57	2.41	13.79	79.93	0.19
1700.00	0.35	348.15	1699.91	3.04	13.61	3.04	13.95	77.40	0.19
1800.00	0.46	320.40	1799.91	3.65	13.29	3.65	13.78	74.62	0.22
1900.00	0.62	341.76	1899.91	4.48	12.86	4.48	13.62	70.81	0.25
2000.00	0.46	1.25	1999.90	5.39	12.70	5.39	13.80	67.00	0.24

measured Depth FT	incl Angle Deg	brm Direction Deg	TVD FT	+N/-S FT	+E/-W FT	Vertical Section FT	Closure Distance FT	Closure Direction Deg	Dogleg Severity Deg/100
2100.00	0.61	338.26	2099.90	6.29	12.51	6.29	14.01	63.30	0.26
2200.00	0.98	339.32	2199.89	7.59	12.01	7.59	14.21	57.72	0.36
2300.00	0.70	332.60	2299.88	8.93	11.43	8.93	14.51	51.99	0.29
2400.00	0.82	354.14	2399.87	10.19	11.07	10.19	15.05	47.37	0.31
2500.00	0.93	354.75	2499.86	11.72	10.93	11.72	16.02	42.99	0.11
2600.00	1.00	354.60	2599.84	13.39	10.77	13.39	17.19	38.80	0.06
2700.00	0.90	352.39	2699.83	15.03	10.58	15.03	18.39	35.15	0.11
2800.00	0.64	345.28	2799.82	16.35	10.34	16.35	19.34	32.32	0.28
2900.00	0.66	339.46	2899.81	17.42	10.00	17.42	20.09	29.85	0.07
3000.00	0.70	338.74	2999.81	18.53	9.57	18.53	20.86	27.32	0.05
3100.00	0.61	337.61	3099.80	19.59	9.15	19.59	21.62	25.03	0.10
3200.00	0.67	343.25	3199.79	20.65	8.78	20.65	22.44	23.03	0.09
3300.00	0.91	354.25	3299.78	22.00	8.53	22.00	23.60	21.19	0.28
3400.00	0.77	353.65	3399.77	23.45	8.37	23.45	24.90	19.65	0.14
3433.00	0.69	353.95	3432.77	23.87	8.33	23.87	25.28	19.23	0.23

OPERATOR MEWBOURNE OIL COMPANY
WELL/LEASE EMPIRE 7 MP FED 1H
COUNTY EDDY

RECEIVED
MAY 03 2012
NMOCD ARTESIA

101-0103

STATE OF NEW MEXICO
DEVIATION REPORT

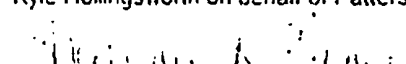
315	0 74
553	1 23
795	1 31
1,299	1 06
1,774	0 83
2,278	0 87
2,776	1 17
3,246	0 84

STATE OF TEXAS

BY 

COUNTY OF MIDLAND

The foregoing instrument was acknowledged before me on 4/11/12 by
Kyle Hollingsworth on behalf of Patterson-UTi Drilling Company LLC


Notary Public for Midland County Texas
My Commission Expires

