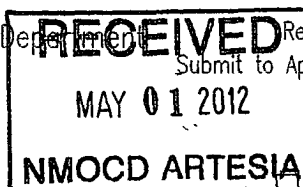


District I
1625 N. French Dr., Hobbs, NM 88240
District II
1301 W. Grand Avenue, Artesia, NM 88210
District III
1000 Rio Brazos Rd., Aztec, NM 87410
District IV
1220 S. St. Francis Dr., Santa Fe, NM 87505

State of New Mexico
Energy, Minerals & Natural Resources Department
OIL CONSERVATION DIVISION
1220 South St. Francis Dr.
Santa Fe, NM 87505



Form C-102
Revised October 12, 2005
Submit to Appropriate District Office
State Lease- 4 Copies
Fee Lease- 3 Copies

AMENDED REPORT

WELL LOCATION AND ACREAGE DEDICATION PLAT

API Number 30-015-39142	Pool Code 96878	Pool Name Undesignated Harroon Ranch Delaware, NE
Property Code 305116	Property Name GOODNIGHT 27 FED.	Well Number 4H
OGRID No. 16696	Operator Name OXY USA INC.	Elevation 3017.5'

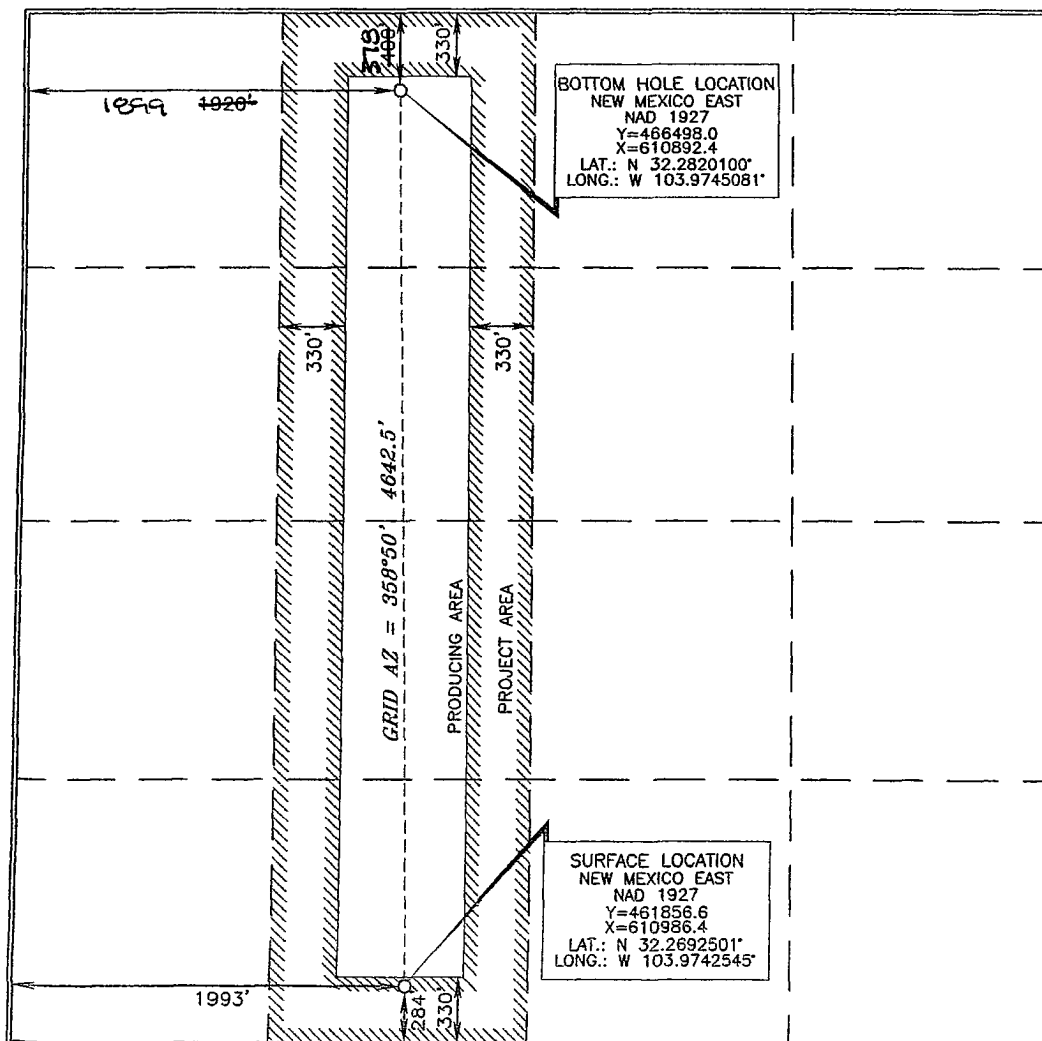
Surface Location

UL or lot no.	Section	Township	Range	Lot Idn	Feet from the	North/South line	Feet from the	East/West line	County
N	27	23 SOUTH	29 EAST, N.M.P.M.		284'	SOUTH	' 1993'	WEST	EDDY

Bottom Hole Location If Different From Surface

UL or lot no.	Section	Township	Range	Lot Idn	Feet from the	North/South line	Feet from the	East/West line	County
C	27	23 SOUTH	29 EAST, N.M.P.M.		400' 378	NORTH	1920' 1859	WEST	EDDY
Dedicated Acres 1.60		Joint or Infill N	Consolidation Code	Order No.					

No allowable will be assigned to this completion until all interests have been consolidated or a non-standard unit has been approved by the division.



OPERATOR CERTIFICATION

I hereby certify that the information contained herein is true and complete to the best of my knowledge and belief, and that this organization either owns a working interest or unleased mineral interest in the land including the proposed bottom hole location or has a right to drill this well at this location pursuant to a contract with an owner of such a mineral or working interest, or to a voluntary pooling agreement or a compulsory pooling order heretofore entered by the division.

David Stewart 5/13/10
Signature Date

David Stewart Sr. Reg. Asst. Lyst
Printed Name

SURVEYOR CERTIFICATION

I hereby certify that the well location shown on this plat was plotted from field notes of actual surveys made by me or under my supervision, and that the same is true and correct to the best of my belief.

SEPTEMBER 3, 2009
Date of Survey

Signature and Seal of Professional Surveyor

Terry J. Asel 1/6/2010
Certificate Number 15079

WO# 090903WL-c (KA)