

District I
1625 N French Dr., Hobbs, NM 88240
Phone (575) 393-6161 Fax (575) 393-0720

District II
811 S First St., Artesia, NM 88210
Phone (575) 748-1283 Fax (575) 748-9720

District III
1000 Rio Brazos Road, Aztec, NM 87410
Phone (505) 334-6178 Fax (505) 334-6170

District IV
1220 S. St. Francis Dr., Santa Fe, NM 87505
Phone (505) 476-3460 Fax (505) 476-3462

State of New Mexico
Energy Minerals and Natural Resources
Oil Conservation Division
1220 South St. Francis Dr.
Santa Fe, NM 87505

Form C-101
Revised December 16, 2011

Permit

APPLICATION FOR PERMIT TO DRILL, RE-ENTER, DEEPEN, PLUGBACK, OR ADD A ZONE

¹ Operator Name and Address		² OGRID Number
Lynx Petroleum Consultants, Inc. P.O. Box 1708 Hobbs, NM 88240		13645
		³ API Number
		30-015-38144
⁴ Property Code	⁵ Property Name	⁶ Well No
36099	EDDY 'BD' STATE	003

⁷ Surface Location

UL - Lot	Section	Township	Range	Lot Idn	Feet from	N/S Line	Feet From	E/W Line	County
G	32	20S	30E		1980	NORTH	1980	EAST	EDDY

⁸ Pool Information

WILDCAT; WOLFCAMP	97668
-------------------	--------------

Additional Well Information

⁹ Work Type Plugback	¹⁰ Well Type Oil	¹¹ Cable/Rotary	¹² Lease Type State	¹³ Ground Level Elevation 3360' GL
¹⁴ Multiple	¹⁵ Proposed Depth 11257' PBTD	¹⁶ Formation Wolfcamp	¹⁷ Contractor	¹⁸ Spud Date 12/19/10
Depth to Ground water Avg: 189, Min: 150, Max: 225		Distance from nearest fresh water well Approximately 1320'		Distance to nearest surface water Approximately 15 miles

¹⁹ Proposed Casing and Cement Program

Type	Hole Size	Casing Size	Casing Weight/ft	Setting Depth	Sacks of Cement	Estimated TOC
Surf	26	20	94	490	1580	Circ Surf
Int	17 1/12	13 3/8	54.5	1468	1305	Circ Surf
Int	12 1/4	9 5/8	36	3898	1185	TOC 120' TS
Prod	8 3/4	5 1/2	17	11331	1685	TOC 2200' TS

Casing/Cement Program: Additional Comments

NO CHANGE

Proposed Blowout Prevention Program

Type	Working Pressure	Test Pressure	Manufacturer
Double Ram	5000	5000	Shaffer

I hereby certify that the information given above is true and complete to the best of my knowledge and belief.

I further certify that the drilling pit will be constructed according to NMOCD guidelines ☐, a general permit ☐, or an (attached) alternative OCD-approved plan ☒

Signature *Debbie McKelvey*
Printed name Debbie McKelvey

Title Agent

E-mail Address debmckelvey@earthlink.net

Date 4/27/12

Phone 575-392-3575

OIL CONSERVATION DIVISION

Approved By

Title

Approved Date

Expiration Date

Conditions of Approval Attached

RECEIVED

APR 30 2012

NMOCD ARTESIA

**Eddy 'BD' State No. 3
Wolfcamp Recompletion Procedure**

Well Data

Location: 1980' FNL & 1980' FEL Section 32, T-20S, R-30E
Eddy County, New Mexico

API No.: 30-015-38144

TD: 11,331' PBDT: 11,257' Elevation: 3,360' GL KB: +17'

Casing and Cement:

20", 94#/ft, J-55 @ 490' cmt. w/1,580 sx. circulated
13-3/8", 54.5#/ft, J-55 @ 1468' cmt. w/1305 sx. circulated
9-5/8", 36 #/ft, J-55 @ 3898' cmt. in two stages w/total of 1185 sx. TOC @ 120'
5-1/2", 17#/ft, P-110 @ 11,331' cmt. in two stages w/total of 1985 sx., TOC
@ 2750' by CBL

Stage Collar: 6,986'

Existing Perforations:

Strawn w/4 JSPF 11,071'-82' (48 holes total)

Proposed Perforations:

Wolfcamp w/4 JSPF 10110'-12', 10121'-24', 10134'-48', 10276'-80', 10364'-66', and 10376'-82'

Tubing:

2-7/8", 6.5#/ft, N-80, EUE

Procedure

1. MIRU. NU hydraulic BOP. NU 5-1/2" 5000 psig full opening valve on top of BOP.
2. Pull & LD rods and & pump. Release TAC. Tally tubing OOH.
3. RU E&P Wireline Services. TIH w/CIBP and set at 11,050'. RD wireline truck.
4. Trip in hole w/2-7/8" tubing OE to 10,500'. Pump 182 bbls. 2% KCL TFW followed by 10 bbls. 15% HCL-NE-FE acid followed by 58 bbls. 2% KCL TFW. TOO H w/tubing.
5. RU E&P Wireline Services w/FULL LUBRICATOR. Perforate Wolfcamp interval w/4 JSPF as per the above schedule.
6. PU wireline set production packer, "F" profile nipple with PLUG INSTALLED, and On/Off tool. Set packer at +/-10,000'. POOH and RD wireline truck.
7. TIH On/Off tool and 2-7/8" tubing. Latch packer. ND 5-1/2" full opening valve and BOP. NU double valve 5000 psig rated tree.
8. TIH w/slickline and pull plug in "F" profile nipple.
9. Displace spot acid w/10 bbls. 2% KCL TFW.
10. Swab Wolfcamp perforations for hydrocarbon show.
11. If well kicks off flowing we may be done. Otherwise evaluate for additional stimulation. Plan will be to flow the abnormal shut-in pressures down to the point where we can work with 2% KCL kill fluids.

12. Additional proposed work will be to re-acidize three lower intervals w/1250 gallons 15%-HCL-NE-FE plus 60 ballsealers. Set a flow thru bridge plug at 10,200'.
13. Acidize upper three intervals w/2000 gals. 7-1/2" HCL-NE-FE acid plus 90 ballsealers followed by fracture stimulation (sand and liquid volumes to be determined).

Prepared By: LRS on 04-2-2012

DISTRICT I
1620 N. French Dr., Hobbs, NM 88240

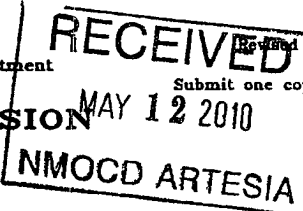
DISTRICT II
1301 W. Grand Avenue, Artesia, NM 88210

DISTRICT III
1000 Rio Brazos Rd., Aztec, NM 87410

DISTRICT IV
1220 S. St. Francis Dr., Santa Fe, NM 87505

State of New Mexico
Energy, Minerals and Natural Resources Department

OIL CONSERVATION DIVISION
1220 South St. Francis Dr.
Santa Fe, New Mexico 87505



Form C-102
Revised October 15, 2009

WELL LOCATION AND ACREAGE DEDICATION PLAT

☐ AMENDED REPORT

API Number 30-015-38144	Pool Code 97668	Pool Name WILDCAT; WC
Property Code 36099	Property Name EDDY "BD" STATE	Well Number 3
OGRID No. 13645	Operator Name LYNX PETROLEUM	Elevation 3360'

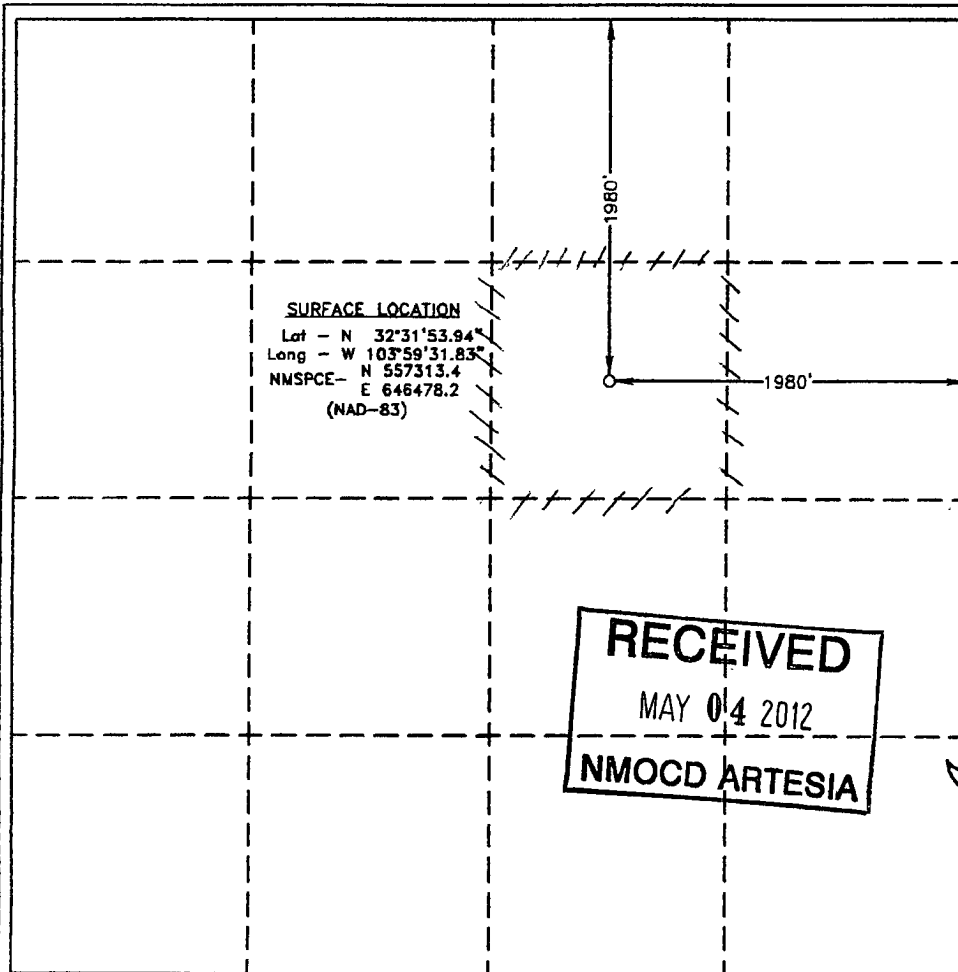
Surface Location

UL or lot No.	Section	Township	Range	Lot Idn	Feet from the	North/South line	Feet from the	East/West line	County
G	32	20 S	30 E		1980	NORTH	1980	EAST	EDDY

Bottom Hole Location If Different From Surface

UL or lot No.	Section	Township	Range	Lot Idn	Feet from the	North/South line	Feet from the	East/West line	County
Dedicated Acres 40	Joint or Infill	Consolidation Code	Order No.						

NO ALLOWABLE WILL BE ASSIGNED TO THIS COMPLETION UNTIL ALL INTERESTS HAVE BEEN CONSOLIDATED
OR A NON-STANDARD UNIT HAS BEEN APPROVED BY THE DIVISION



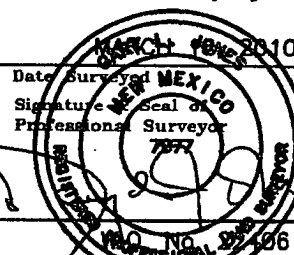
OPERATOR CERTIFICATION

I hereby certify that the information contained herein is true and complete to the best of my knowledge and belief, and that this organization either owns a working interest or released mineral interest in the land including the proposed bottom hole location or has a right to drill this well at this location pursuant to a contract with an owner of such a mineral or working interest, or to a voluntary pooling agreement or a compulsory pooling order heretofore entered by the division.

Signature: *Debbie McKelvey* Date: 5/11/12
Printed Name: Debbie McKelvey

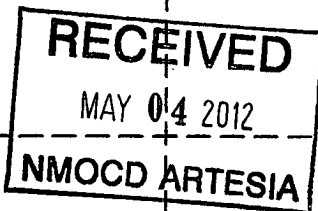
SURVEYOR CERTIFICATION

I hereby certify that the well location shown on this plat was plotted from field notes of actual surveys made by me or under my supervision, and that the same is true and correct to the best of my belief.

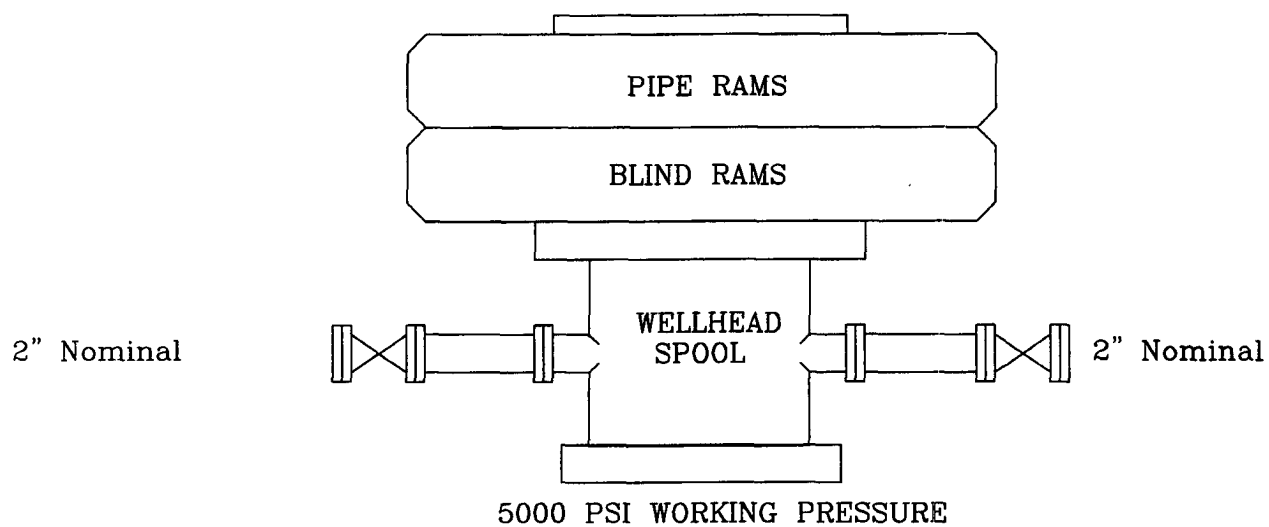


Certificate No. Gary L. Jones 7977

Basin Surveys



PRODUCTION WORKOVER



Location: SW/4 NE/4
Sec. 32, T-20S, R-30E
Eddy County, NM

Eddy 'BD' State No. 3
RECOMPLETION BLOWOUT PREVENTER

Scale: None

4-1-10

LYNX PETROLEUM CONSULTANTS, INC.
WOLFCAMP RECOMPLETION H₂S PRECAUTIONS
Eddy 'BD' State No. 3

I. HYDROGEN SULFIDE TRAINING

All personnel, whether regularly assigned, contracted, or employed on an unscheduled basis, will receive training from a qualified instructor in the following areas prior to commencing operations on this well:

1. The hazards and characteristics of hydrogen sulfide (H₂S).
2. The proper use and maintenance of personal protective equipment and life support systems.
3. The proper use of H₂S detectors, alarms, warning systems, briefing areas, evacuation procedures, and prevailing winds.
4. The proper techniques for first aid and rescue procedures.

In addition, supervisory personnel will be trained in the following areas:

1. The effects of H₂S on metal components. If high tensile tubulars are to be used, personnel will be trained in their special maintenance requirements.
2. Corrective action and shut-in procedures when drilling or reworking a well and blowout prevention and well control procedures.

II. H₂S SAFETY EQUIPMENT AND SYSTEMS

1. Well Control Equipment :
 - A. A 5000 psig WP Blowout preventer with blind rams and pipe rams to accommodate all pipe sizes with properly sized closing unit will be furnished.
2. H₂S detection and monitoring equipment :
 - A. 2 – portable H₂S monitors positioned on location for best coverage and response. These units have warning lights and audible sirens when H₂S levels of 20 ppm are reached.

WOLFCAMP RECOMPLETION H₂S PRECAUTIONS

Eddy 'BD' State No. 3

Page 2

3. Visual warning systems :
 - A. A wind direction indicator will be in place on the pulling unit doghouse.
4. Mud program :
 - A. The working fluid for this recompletion will be 2% KCL treated fresh water.
5. Metallurgy :
 - A. Tubing, wellhead, and blowout preventers shall be suitable for H₂S service.
 - B. All elastomers used for packing and seals shall be H₂S trim.
6. Communication :
 - A. Communications in company vehicles are provided by cellular telephones.
Cell1: 575-390-9063 Cell2: 575-390-9065
 - B. Land line (telephone) communications at Hobbs office.
Phone: 575-392-6950
 - C. Emergency Numbers
911
Carlsbad Sheriff's Dept.: 575-887-1888
Carlsbad Hospital: 575-887-4100
Carlsbad Fire Dept.: 575-885-3125
Maljamar Fire Dept.: 575-676-4100
Hobbs Hospital: 575-492-5000
New Mexico State Police: 575-392-5588
8. Well testing :
 - A. No drill stem tests are being contemplated during this operation.