

DISTRICT I
1625 N. French Dr., Hobbs, NM 88240

DISTRICT II
1301 W. Grand Avenue, Artesia, NM 88210

DISTRICT III
1000 Rio Brazos Rd., Aztec, NM 87410

DISTRICT IV
1220 S. St. Francis Dr., Santa Fe, NM 87505

State of New Mexico
Energy, Minerals and Natural Resources Department

Form C-102
Revised July 16, 2010

Submit one copy to appropriate
District Office

OIL CONSERVATION DIVISION
1220 South St. Francis Dr.
Santa Fe, New Mexico 87505

WELL LOCATION AND ACREAGE DEDICATION PLAT

☐ AMENDED REPORT

API Number 30-015-39805	Pool Code 96210	Pool Name Empire; Glorieta Yeso
Property Code 38996	Property Name EMPIRE 7 MP FEDERAL	Well Number 1H
OGRID No. 14744	Operator Name MEWBOURNE OIL COMPANY	Elevation 3699'

Surface Location

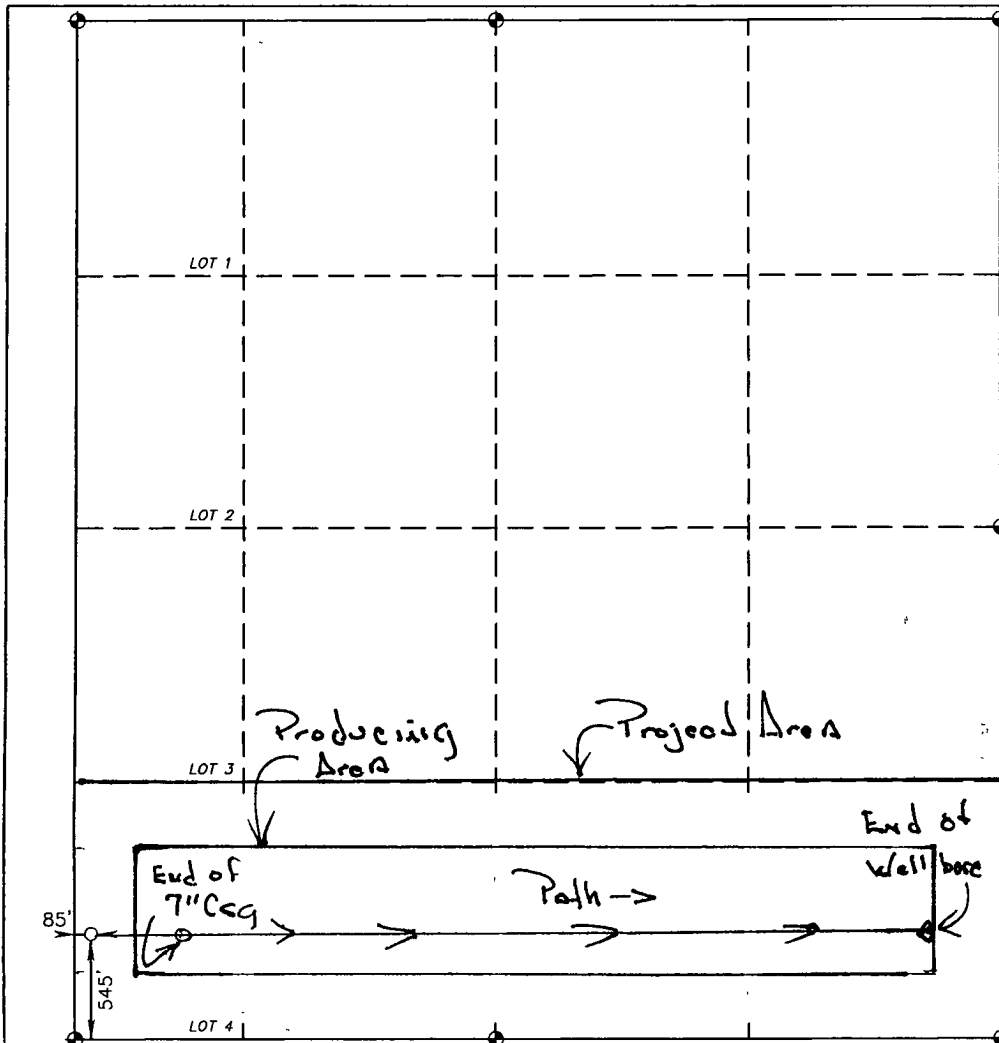
UL or lot No. LOT 4	Section 7	Township 17 S	Range 29 E	Lot Idn	Feet from the 545	North/South line SOUTH	Feet from the 85	East/West line WEST	County EDDY
------------------------	--------------	------------------	---------------	---------	----------------------	---------------------------	---------------------	------------------------	----------------

Bottom Hole Location If Different From Surface

UL or lot No. P	Section 7	Township 17 S	Range 29 E	Lot Idn	Feet from the 571	North/South line South	Feet from the 342	East/West line East	County Eddy
--------------------	--------------	------------------	---------------	---------	----------------------	---------------------------	----------------------	------------------------	----------------

Dedicated Acres 146.56	Joint or Infill	Consolidation Code	Order No.
---------------------------	-----------------	--------------------	-----------

NO ALLOWABLE WILL BE ASSIGNED TO THIS COMPLETION UNTIL ALL INTERESTS HAVE BEEN CONSOLIDATED
OR A NON-STANDARD UNIT HAS BEEN APPROVED BY THE DIVISION



OPERATOR CERTIFICATION

I hereby certify that the information contained herein is true and complete to the best of my knowledge and belief, and that this organization either owns a working interest or unleased mineral interest in the land including the proposed bottom hole location or has a right to drill this well at this location pursuant to a contract with an owner of such a mineral or working interest, or to a voluntary pooling agreement or a compulsory pooling order heretofore entered by the division.

Signature [Signature] Date 4/28/12

Printed Name N. M. Young

Email Address _____

SURVEYOR CERTIFICATION

I hereby certify that the well location shown on this plat was plotted from field notes of actual surveys made by me or under my supervision, and that the same is true and correct to the best of my belief.

Date Surveyed _____

Signature & Seal of Professional Surveyor [Signature]

Certificate No. Gary L. Jones 7977

BASIN SURVEYS 24837