

DISTRICT I  
1625 N. French Dr., Hobbs, NM 88240  
DISTRICT II  
1301 W. Grand Avenue, Artesia, NM 88210  
DISTRICT III  
1000 Rio Brazos Rd., Aztec, NM 87410  
DISTRICT IV  
1220 S. St. Francis Dr., Santa Fe, NM 87505

State of New Mexico  
Energy, Minerals and Natural Resources Department

OIL CONSERVATION DIVISION  
1220 South St. Francis Dr.  
Santa Fe, New Mexico 87505

RECEIVED

JUN 07 2012

Form C-102  
Revised October 15, 2009

Submit one copy to appropriate  
District Office

NMUCD ARTESIA

WELL LOCATION AND ACREAGE DEDICATION PLAT

AMENDED REPORT

API Number <b>30-015-37646</b>	Pool Code <b>50386</b>	Pool Name <b>Poker Lake, S (Delaware)</b>
Property Code <b>306402</b>	Property Name <b>POKER LAKE UNIT</b>	Well Number <b>303H</b>
OGRID No. <b>260737</b>	Operator Name <b>BOPCO, L.P.</b>	Elevation <b>3411'</b>

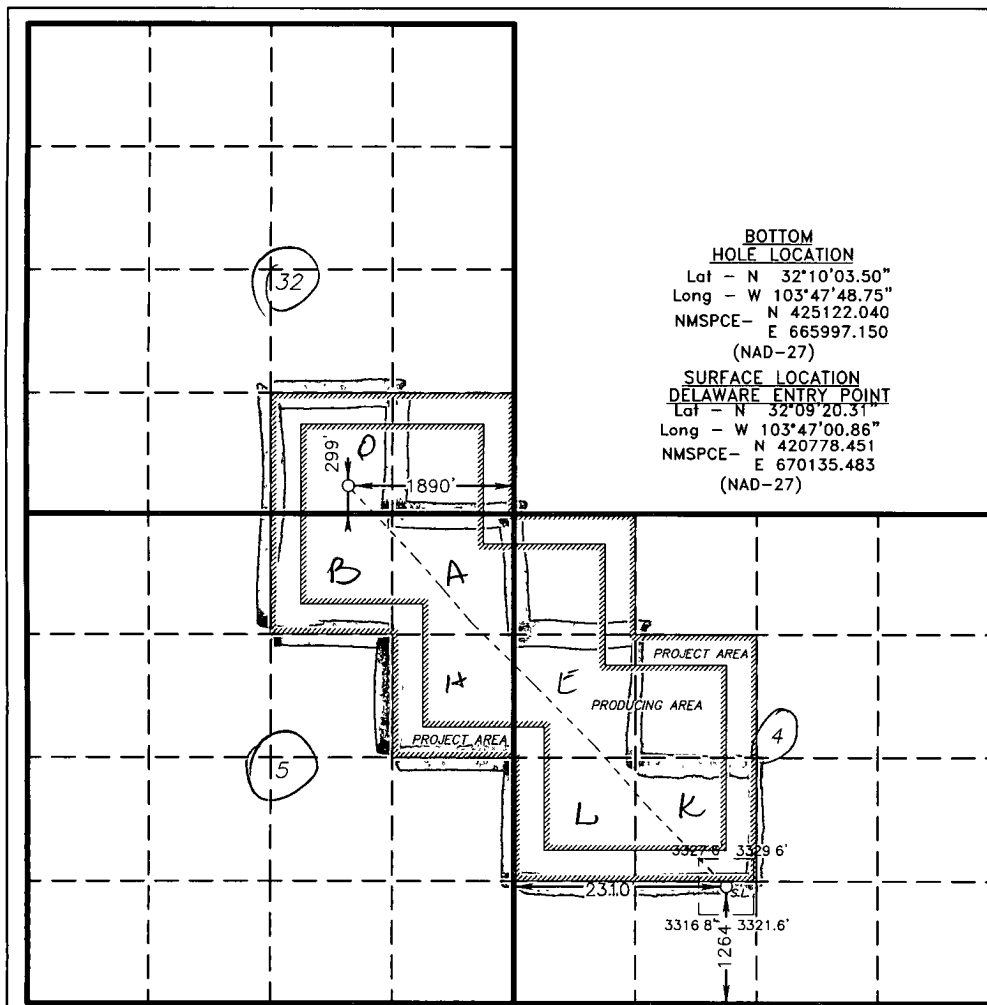
Surface Location

UL or lot No.	Section	Township	Range	Lot Idn	Feet from the	North/South line	Feet from the	East/West line	County
N	4	25 S	31 E		1264	SOUTH	2310	WEST	EDDY

Bottom Hole Location If Different From Surface

UL or lot No.	Section	Township	Range	Lot Idn	Feet from the	North/South line	Feet from the	East/West line	County
0	32	24 S	31 E		299	SOUTH	1890	EAST	EDDY
Dedicated Acres <b>280</b>	Joint or Infill	Consolidation Code	Order No.						

NO ALLOWABLE WILL BE ASSIGNED TO THIS COMPLETION UNTIL ALL INTERESTS HAVE BEEN CONSOLIDATED  
OR A NON-STANDARD UNIT HAS BEEN APPROVED BY THE DIVISION



BOTTOM  
HOLE LOCATION

Lat - N 32°10'03.50"  
Long - W 103°47'48.75"  
NMSPC- N 425122.040  
E 665997.150  
(NAD-27)

SURFACE LOCATION  
DELAWARE ENTRY POINT

Lat - N 32°09'20.31"  
Long - W 103°47'00.86"  
NMSPC- N 420778.451  
E 670135.483  
(NAD-27)

OPERATOR CERTIFICATION

I hereby certify that the information contained herein is true and complete to the best of my knowledge and belief, and that this organization either owns a working interest or unleased mineral interest in the land including the proposed bottom hole location or has a right to drill this well at this location pursuant to a contract with an owner of such a mineral or working interest, or to a voluntary pooling agreement or a compulsory pooling order heretofore entered by the division.

**Sandra J. Belt** 6-5-12  
Signature Date

**Sandra J. Belt**  
Printed Name  
**sjbelt@besspet.com**

SURVEYOR CERTIFICATION

I hereby certify that the well location shown on this plat was plotted from field notes of actual surveys made by me or under my supervision, and that the same is true and correct to the best of my belief

**JANUARY 10 2010**  
Date Surveyed  
**NEW MEXICO**  
Signature & Seal of  
Professional Surveyor  
**7977**  
Certificate No. Gary L. Jones 7977

BASIN SURVEYS