

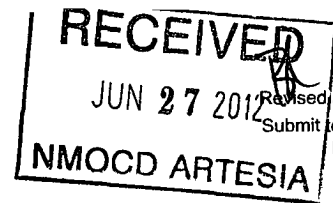
DISTRICT I
1625 N. FRENCH DR., HOBBS, NM 88240

DISTRICT II
1301 W. GRAND AVENUE, ARTESIA, NM 88210

DISTRICT III
1000 RIO BRAZOS RD., AZTEC, NM 87410

DISTRICT IV
11885 S. ST. FRANCIS DR., SANTA FE, NM 87505

State of New Mexico
Energy, Minerals & Natural Resources Department
OIL CONSERVATION DIVISION
1220 South St. Francis Dr.
Santa Fe, New Mexico 87505



Form C-102
Revised July 16, 2010
Submit to Appropriate District Office

AMENDED REPORT

WELL LOCATION AND ACREAGE DEDICATION PLAT

| | | |
|-----------------------------------|--|--|
| API Number 30-015-39074 | Pool Code 96830 | Pool Name ARTESIA; GLORIETA-YESO (C) |
| Property Code 308723 | Property Name NB TWEEN STATE | |
| OGRID No. 873 | Operator Name APACHE CORPORATION | Well Number Δ 24 |
| | | Elevation 3671' |

Surface Location

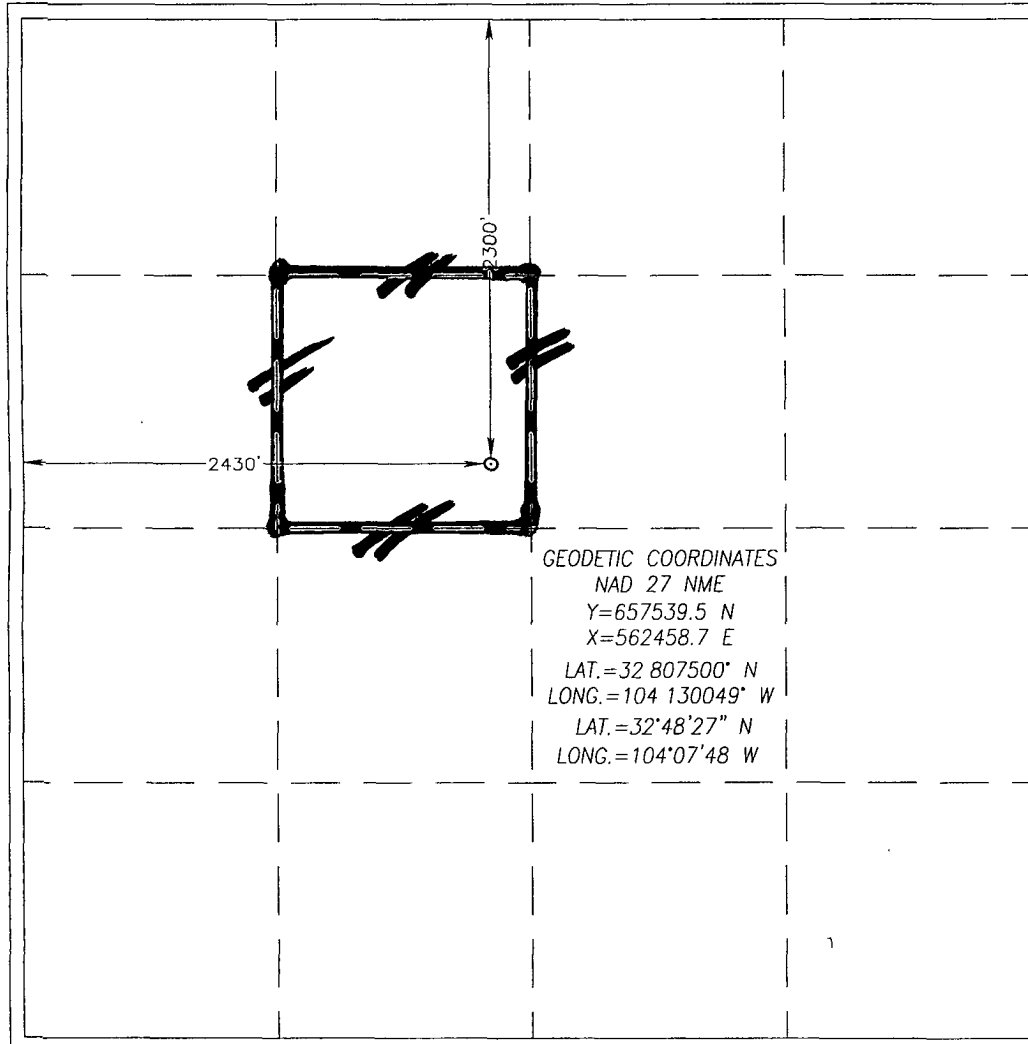
| UL or lot No. | Section | Township | Range | Lot Idn | Feet from the | North/South line | Feet from the | East/West line | County |
|---------------|---------|----------|-------|---------|---------------|------------------|---------------|----------------|--------|
| F | 25 | 17-S | 28-E | | 2300 | NORTH | 2430 | WEST | EDDY |

Bottom Hole Location If Different From Surface

| UL or lot No. | Section | Township | Range | Lot Idn | Feet from the | North/South line | Feet from the | East/West line | County |
|---------------|---------|----------|-------|---------|---------------|------------------|---------------|----------------|--------|
| | | | | | | | | | |

| | | | |
|------------------------------|-----------------|--------------------|------------------------------|
| Dedicated Acres 40 | Joint or Infill | Consolidation Code | Order No. NSL-6417 |
|------------------------------|-----------------|--------------------|------------------------------|

NO ALLOWABLE WILL BE ASSIGNED TO THIS COMPLETION UNTIL ALL INTERESTS HAVE BEEN CONSOLIDATED OR A NON-STANDARD UNIT HAS BEEN APPROVED BY THE DIVISION



GEODETIC COORDINATES
NAD 27 NME
Y=657539.5 N
X=562458.7 E
LAT.=32 807500" N
LONG.=104 130049" W
LAT.=32'48'27" N
LONG.=104°07'48" W

OPERATOR CERTIFICATION

I hereby certify that the information herein is true and complete to the best of my knowledge and belief, and that this organization either owns a working interest or unleased mineral interest in the land including the proposed bottom hole location or has a right to drill this well at this location pursuant to a contract with an owner of such mineral or working interest, or to a voluntary pooling agreement or a compulsory pooling order heretofore entered by the division

Reesa Holland 4/12/12
Signature Date

REESA HOLLAND
Printed Name

Reesa.Holland@apachecorp.com
E-mail Address

SURVEYOR CERTIFICATION

I hereby certify that the well location shown on this plat was plotted from field notes of actual surveys made by me or under my supervision, and that the same is true and correct to the best of my belief

APRIL 28, 2011

Date of Survey
Signature & Seal of Professional Surveyor:

Certificate Number Gary G. Eidson 12641
Ronald J. Eidson 3239

LA WSC W.O.: 11.11.0941