

DISTRICT I
1625 N. FRENCH DR., HOBBS, NM 88240

DISTRICT II
1301 W. GRAND AVENUE, ARTESIA, NM 88210

DISTRICT III
1000 Rio Brazos Rd., Aztec, NM 87410

DISTRICT IV
1220 S. ST. FRANCIS DR., SANTA FE, NM 87505

State of New Mexico
Energy, Minerals and Natural Resources Department

OIL CONSERVATION DIVISION
1220 SOUTH ST. FRANCIS DR.
Santa Fe, New Mexico 87505

RECEIVED

AUG 22 2012
NMOCD ARTESIA

Form C-102
Revised JUNE 10, 2003
Submit to appropriate District Office
State Lease - 4 Copies
Fee Lease - 3 Copies

WELL LOCATION AND ACREAGE DEDICATION PLAT

☐ AMENDED REPORT

API Number 30-015-33705	Pool Code 74080	Pool Name Carlsbad Strawn East
Property Code 34394	Property Name MADISON 1 FEE COM	Well Number 1
OGRID No. 015445	Operator Name MYCO INDUSTRIES, INC.	Elevation 3093'

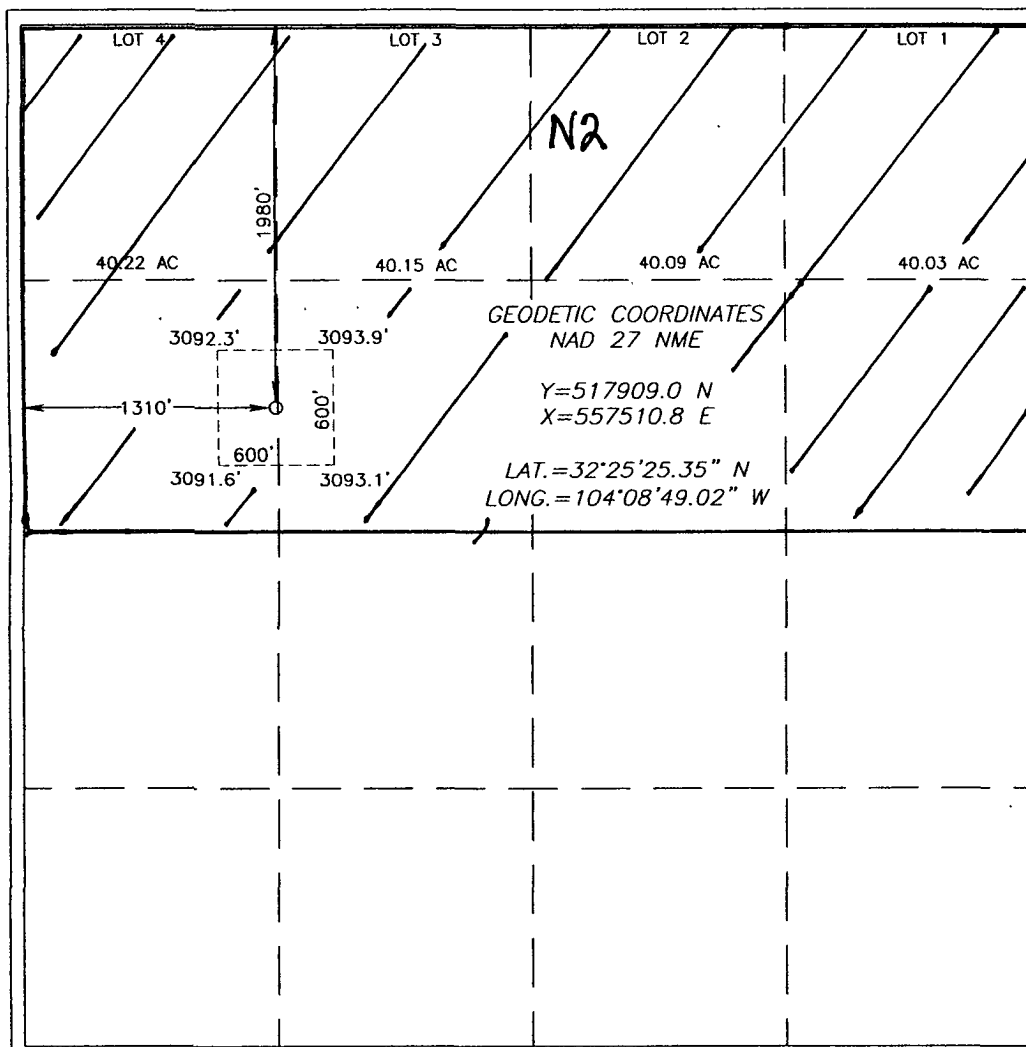
Surface Location

UL or lot No. E	Section 1	Township 22-S	Range 27-E	Lot Idn	Feet from the 1980	North/South line NORTH	Feet from the 1310	East/West line WEST	County EDDY
--------------------	--------------	------------------	---------------	---------	-----------------------	---------------------------	-----------------------	------------------------	----------------

Bottom Hole Location If Different From Surface

UL or lot No.	Section	Township	Range	Lot Idn	Feet from the	North/South line	Feet from the	East/West line	County
Dedicated Acres 320	Joint or Infill	Consolidation Code	Order No.						

NO ALLOWABLE WILL BE ASSIGNED TO THIS COMPLETION UNTIL ALL INTERESTS HAVE BEEN CONSOLIDATED
OR A NON-STANDARD UNIT HAS BEEN APPROVED BY THE DIVISION



OPERATOR CERTIFICATION

I hereby certify the the information
contained herein is true and complete to the
best of my knowledge and belief

Hannah Palomin
Signature

Hannah Palomin
Printed Name
Land Manager

Title
08.20.2012
Date

SURVEYOR CERTIFICATION

I hereby certify that the well location shown
on this plat was plotted from field notes of
actual surveys made by me or under my
supervision, and that the same is true and
correct to the best of my belief.

OCTOBER 19, 2004.

Date Surveyed LA REV: 10/27/04

Signature & Seal of
Professional Surveyor

Gary E. Edson
04.11.1368
10/27/04

Certificate No. GARY EIDSON

12641