

DISTRICT I
1625 N. French Dr., Hobbs, NM 88240

DISTRICT II
1301 W. Grand Avenue, Artesia, NM 88210

DISTRICT III
1000 Rio Brazos Rd., Aztec, NM 87410

DISTRICT IV
1220 S. St. Francis Dr., Santa Fe, NM 87505

State of New Mexico
Energy, Minerals and Natural Resources Department

OIL CONSERVATION DIVISION
1220 South St. Francis Dr.
Santa Fe, New Mexico 87505

RECEIVED

AUG 28 2012

Form C-102

Revised October 12, 2005

Submit to Appropriate District Office

State Lease - 4 Copies

Fee Lease - 3 Copies

WELL LOCATION AND ACREAGE DEDICATION PLAT

☐ AMENDED REPORT

API Number 30-015-36870	Pool Code 8090	Pool Name Brushy Draw; Delaware East
Property Code 37291	Property Name RDX "17"	Well Number 3
OGRID No. 246289	Operator Name RKI EXPLORATION & PRODUCTION	Elevation 3048'



Surface Location

UL or lot No. P	Section 17	Township 26 S	Range 30 E	Lot Idn	Feet from the 510	North/South line SOUTH	Feet from the 380	East/West line EAST	County EDDY
--------------------	---------------	------------------	---------------	---------	----------------------	---------------------------	----------------------	------------------------	----------------

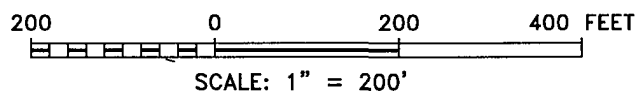
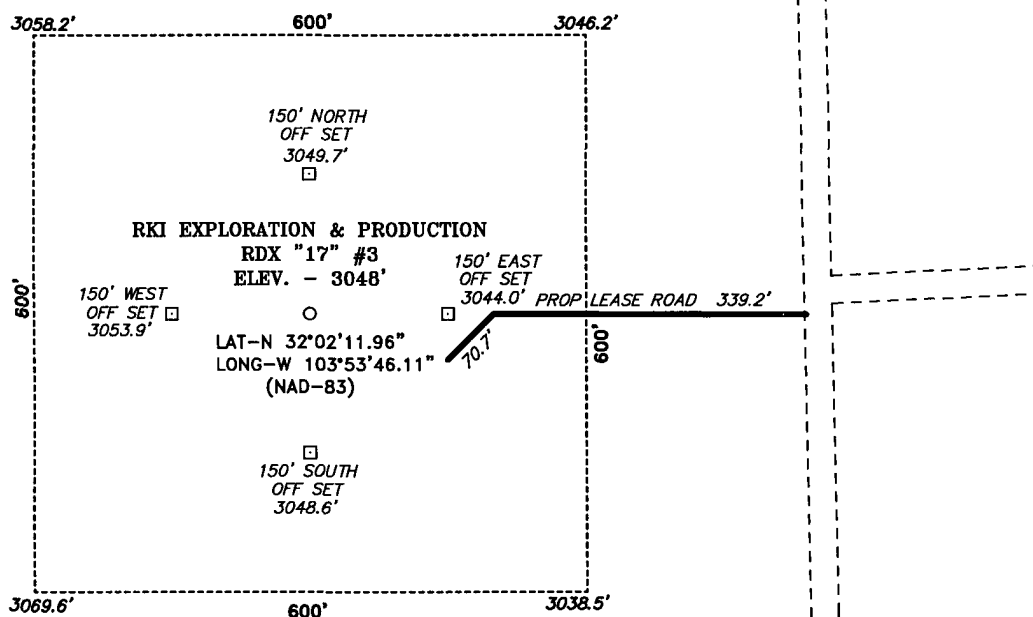
Bottom Hole Location If Different From Surface

UL or lot No.	Section	Township	Range	Lot Idn	Feet from the	North/South line	Feet from the	East/West line	County
Dedicated Acres					Joint or Infill	Consolidation Code	Order No.		

NO ALLOWABLE WILL BE ASSIGNED TO THIS COMPLETION UNTIL ALL INTERESTS HAVE BEEN CONSOLIDATED
OR A NON-STANDARD UNIT HAS BEEN APPROVED BY THE DIVISION

				OPERATOR CERTIFICATION	
				<p>I hereby certify that the information contained herein is true and complete to the best of my knowledge and belief, and that this organization either owns a working interest or unleased mineral interest in the land including the proposed bottom hole location pursuant to a contract with an owner of such a mineral or working interest, or to a voluntary pooling agreement or a compulsory pooling order heretofore entered by the division.</p> <p> 8/24/2012 Signature Date Charles K. Ahn Printed Name</p>	
				SURVEYOR CERTIFICATION	
				<p>I hereby certify that the well location shown on this plat was plotted from field notes of actual surveys made by me or under my supervision and that the same is true and correct to the best of my belief.</p> <p>NOVEMBER 10, 2008 Date Surveyed  Signature & Seal Professional Surveyor 7977 W.C. 2462890 Certificate No. Gary L. Jones 7977 BASIN SURVEYS</p>	
				<p>SURFACE LOCATION LAT N.: 32°02'11.96" LONG W.: 103°53'46.11" N.: 377348.3 SPC-E.: 676808.0 (NAD-83)</p> <p>3058.2' 3046.2' 380' 3069.6' 3038.5'</p>	

SECTION 17, TOWNSHIP 26 SOUTH, RANGE 30 EAST, N.M.P.M.,
EDDY COUNTY, NEW MEXICO.



RKI EXPLORATION & PRODUCTION

REF: RDX "17" #3 / Well Pad Topo

THE RDX "17" #3 LOCATED 510' FROM
THE SOUTH LINE AND 380' FROM THE EAST LINE OF
SECTION 17, TOWNSHIP 26 SOUTH, RANGE 30 EAST,
N.M.P.M., EDDY COUNTY, NEW MEXICO.

BASIN SURVEYS P.O. BOX 1786-HOBBS, NEW MEXICO

W.O. Number: 20790

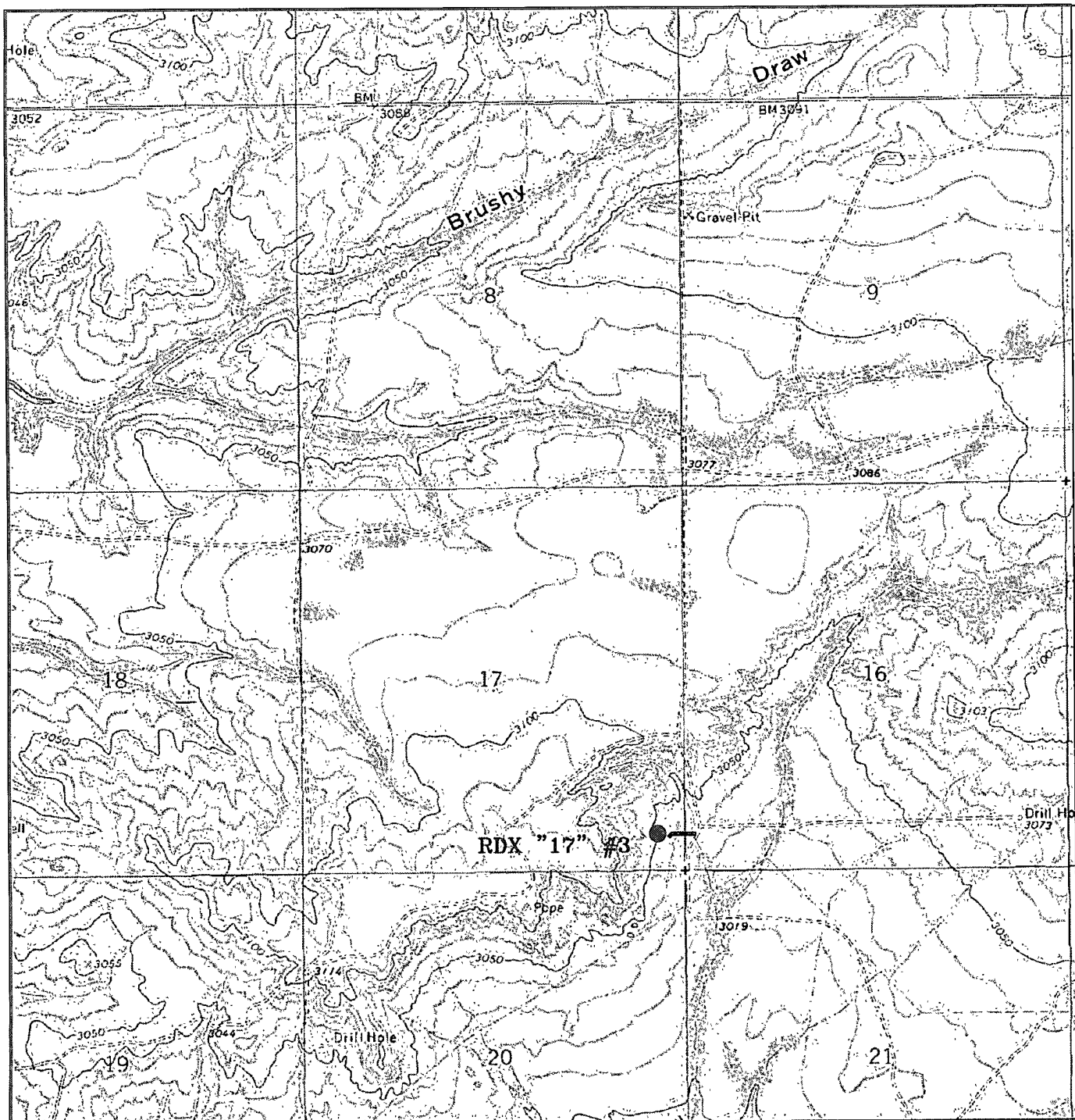
Drawn By: J. M. SMALL

Date: 11-11-2008

Disk: 20790

Survey Date: 11-10-2008

Sheet 1 of 1 Sheets



RDX "17" #3

Located at 510' FSL AND 380' FEL
Section 17, Township 26 South, Range 30 East,
N.M.P.M., Eddy County, New Mexico.

basin
surveys
focused on excellence
in the oilfield

P.O. Box 1786
1120 N. West County Rd.
Hobbs, New Mexico 88241
(575) 393-7316 - Office
(575) 392-2206 - Fax
basinsurveys.com

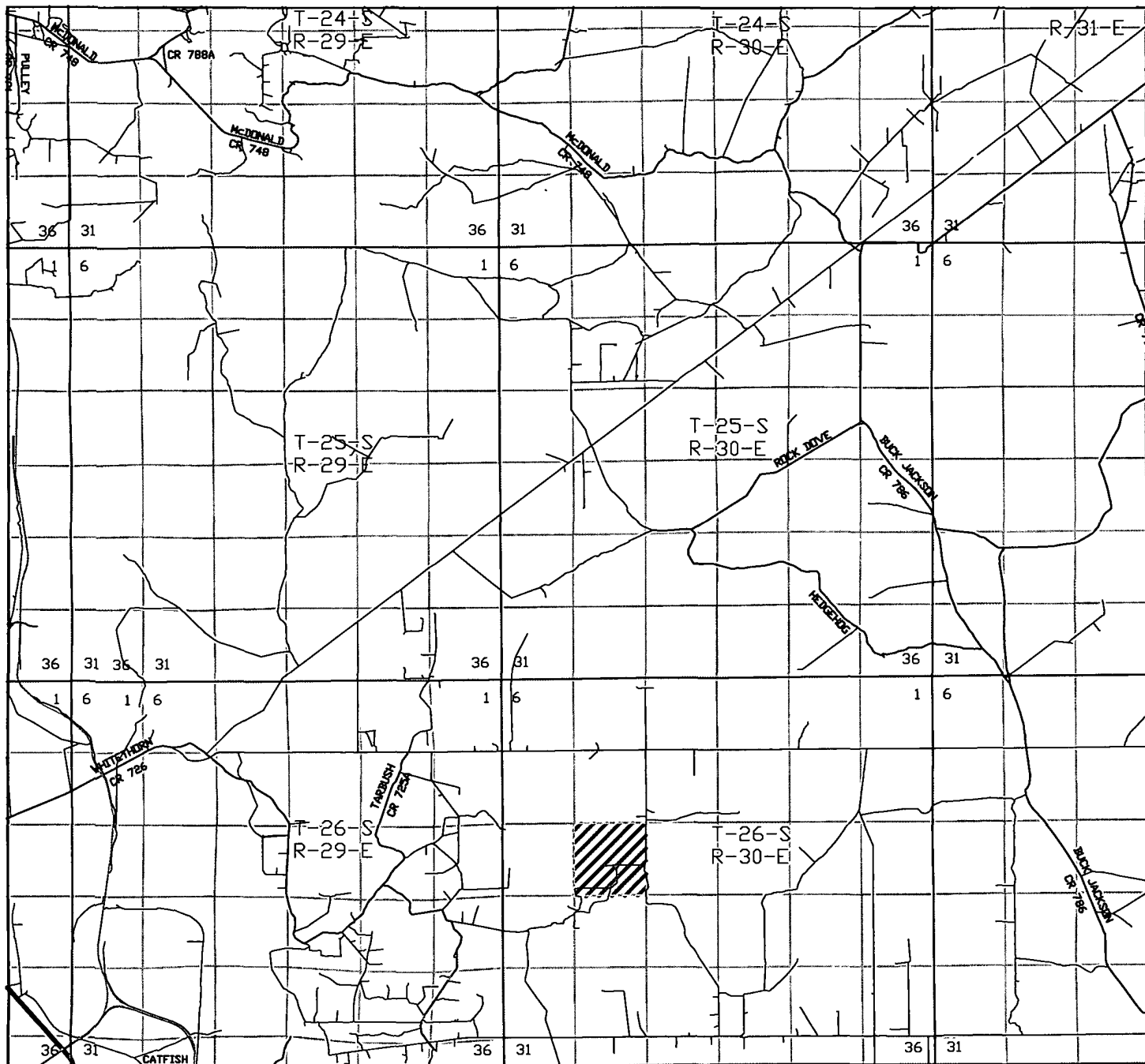
W.O. Number: 20790

Survey Date: 11-10-2008

Scale: 1" = 2000'

Date: 11-11-2008

RKI
EXPLORATION &
PRODUCTION



RDX "17" #3

Located at 510' FSL AND 380' FEL
Section 17, Township 26 South, Range 30 East,
N.M.P.M., Eddy County, New Mexico.

basin
surveys

focused on excellence
in the oilfield

P.O. Box 1786
1120 N. West County Rd.
Hobbs, New Mexico 88241
(575) 393-7316 - Office
(575) 392-2206 - Fax
basinsurveys.com

W.O. Number: 20790

Survey Date: 11-10-2008

Scale: 1" = 2000'

Date: 11-11-2008

RKI
EXPLORATION &
PRODUCTION