



OCD-ARTESIA

Form 3160-3
(February 2005)

UNITED STATES
DEPARTMENT OF THE INTERIOR
BUREAU OF LAND MANAGEMENT
APPLICATION FOR PERMIT TO DRILL OR REENTER

FORM APPROVED
OMB NO 1004-0137
Expires March 31, 2007

1a Type of Work: ☒ DRILL ☐ REENTER
1b Type of Well ☒ Oil Well ☐ Gas Well ☐ Other ☐ Single Zone ☐ Multiple Zone
2 Name of Operator

Yates Petroleum Corporation 025575

3a Address 105 South Fourth Street, Artesia, NM 88210
3b Phone No. (include area code) 505-748-1471

4 Location of well (Report location clearly and in accordance with any State Requirements *)
At surface 1920' FNL & 330' FEL
At proposed prod zone 660' FNL & 330' FWL

14 Distance in miles and direction from the nearest town or post office*
38 miles northeast of Loving, NM

15 Distance from proposed* location to nearest property or lease line, ft. (Also to nearest d/lg unit line, if any) 330
16 No of acres in lease 880.00
17 Spacing Unit dedicated to this well N2N2

18 Distance from proposed location* to nearest well, drilling, completed, applied for, on this lease, ft. 8358 - TVD & 13019 MD
19 Proposed Depth PA 8550 TVD
20 BLM/ BIA Bond No. on file NATIONWIDE BOND #NMB000434

21 Elevations (Show whether DF, KDB, RT, GL, etc) 3665' GL
22 Approximate date work will start* June 30, 2010
23 Estimated duration 50 days

24 Attachments

The following, completed in accordance with the requirements of Onshore Oil and Gas Order No 1 shall be attached to this form

- | | |
|---|--|
| 1 Well plat certified by a registered surveyor | 4 Bond to cover the operations unless covered by existing bond on file(see item 20 above). |
| 2 A Drilling Plan | 5 Operator certification |
| 3 A Surface Use Plan (if the location is on National Forest System Lands, the SUPO must be filed with the appropriate Forest Service Office) | 6. Such other site specific information and/ or plans as may be required by the BLM |

25 Signature *Clifton May* Name (Printed/ Typed) Clifton May Date 5/14/2010
Title Land Regulatory Agent

Approved By (Signature) /s/ Tony J. Herrell Name (Printed/ Typed) /s/ Tony J. Herrell Date DEC 28 2011
Title FOR STATE DIRECTOR Office NM STATE OFFICE

Application approval does not warrant or certify that the applicant holds legal or equitable title to those rights in the subject lease which would entitle the applicant to cc operations thereon

Conditions of approval, if any, are attached

APPROVAL FOR TWO YEARS

Title 18 U S C Section 1001 and Title 43 U S C Section 1212, make it a crime for any person knowingly and wilfully to make to any department or agency of the United States any false, fictitious or fraudulent statements or representations as to any matter within its jurisdiction

*(Instructions on page 2)

CARLSBAD CONTROLLED WATER BASIN

SEE ATTACHED FOR
CONDITIONS OF APPROVAL

Hold C104 for NSL apvl

**APPROVAL SUBJECT TO
GENERAL REQUIREMENTS
AND SPECIAL STIPULATIONS
ATTACHED**

DISTRICT I
1625 N. French Dr., Hobbs, NM 88240

DISTRICT II
1301 W. Grand Avenue, Artesia, NM 88210

DISTRICT III
1000 Rio Brazos Rd., Aztec, NM 87410

DISTRICT IV
1220 S. St. Francis Dr., Santa Fe, NM 87505

State of New Mexico
Energy, Minerals and Natural Resources Department

Form C-102
Revised October 15, 2009

Submit one copy to appropriate
District Office

OIL CONSERVATION DIVISION

1220 South St. Francis Dr.
Santa Fe, New Mexico 87505

WELL LOCATION AND ACREAGE DEDICATION PLAT

☐ AMENDED REPORT

API Number 30-015-39829	Pool Code 40299	Pool Name Lost Tank Delaware
Property Code 12900	Property Name WOLF "AJA" FEDERAL	Well Number 17H
OGRID No. 025575	Operator Name YATES PETROLEUM CORP.	Elevation 3665'

Surface Location

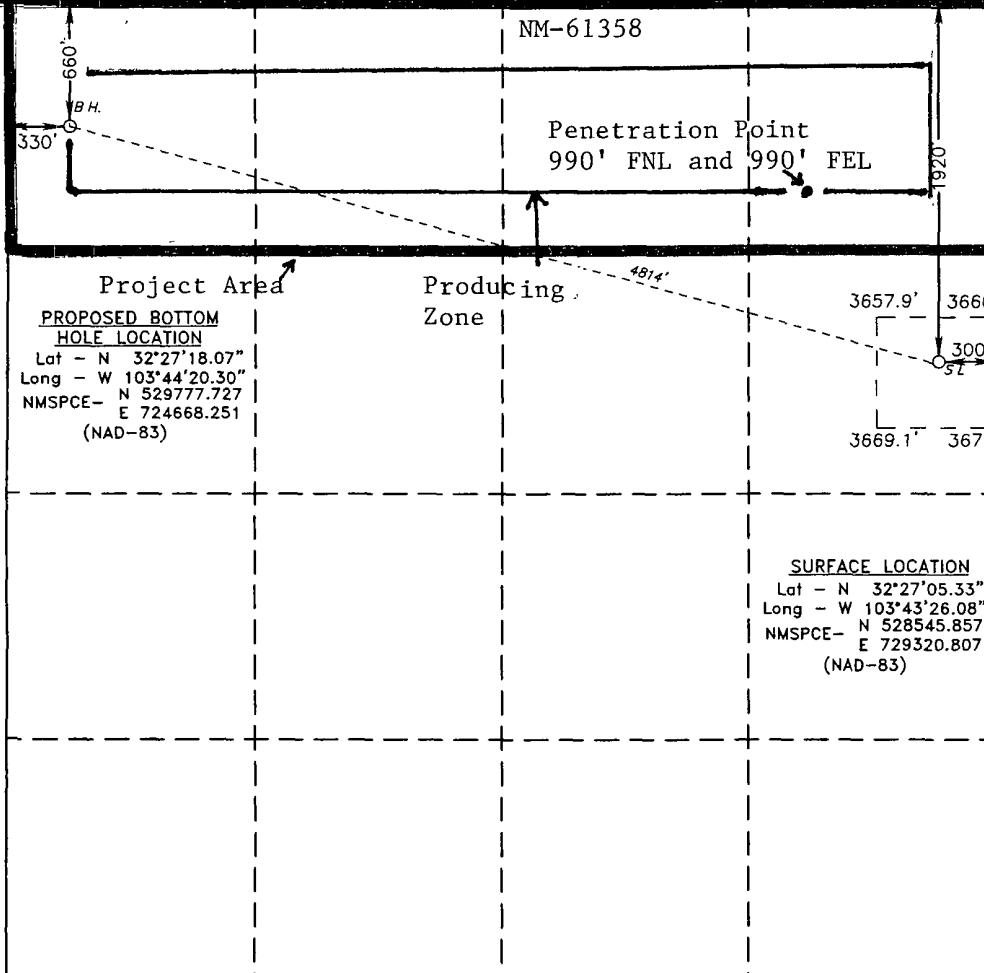
UL or lot No.	Section	Township	Range	Lot Idn	Feet from the	North/South line	Feet from the	East/West line	County
H	25	21 S	31 E		1920	NORTH	300	EAST	EDDY

Bottom Hole Location If Different From Surface

UL or lot No.	Section	Township	Range	Lot Idn	Feet from the	North/South line	Feet from the	East/West line	County
D	25	21 S	31 E		660	NORTH	330	WEST	EDDY

Dedicated Acres	Joint or Infill	Consolidation Code	Order No.
160			

NO ALLOWABLE WILL BE ASSIGNED TO THIS COMPLETION UNTIL ALL INTERESTS HAVE BEEN CONSOLIDATED
OR A NON-STANDARD UNIT HAS BEEN APPROVED BY THE DIVISION

 <p>NM-61358</p> <p>Penetration Point 990' FNL and 990' FEL</p> <p>Project Area</p> <p>PROPOSED BOTTOM HOLE LOCATION Lot - N 32°27'18.07" Long - W 103°44'20.30" NMSPCE- N 529777.727 E 724668.251 (NAD-83)</p> <p>Producing Zone</p> <p>SURFACE LOCATION Lot - N 32°27'05.33" Long - W 103°43'26.08" NMSPCE- N 528545.857 E 729320.807 (NAD-83)</p>	<p>OPERATOR CERTIFICATION</p> <p>I hereby certify that the information contained herein is true and complete to the best of my knowledge and belief, and that this organization either owns a working interest or unleased mineral interest in the land including the proposed bottom hole location or has a right to drill this well at this location pursuant to a contract with an owner of such a mineral or working interest, or to a voluntary pooling agreement or a compulsory pooling order heretofore entered by the division.</p> <p><i>Clifton May</i> 5/17/10 Signature Date</p> <p>Clifton May Printed Name</p> <p>SURVEYOR CERTIFICATION</p> <p>I hereby certify that the well location shown on this plat was plotted from field notes of actual surveys made by me or under my supervision, and that the same is true and correct to the best of my belief</p> <p>MARCH 25 2010 Date Surveyed Signature & Seal of Professional Surveyor 7977 Certificate No. 225 BASIL L. JONES 7977</p> <p>BASIN SURVEYS</p>
--	--

YATES PETROLEUM CORPORATION
 Wolf "AJA" Federal #17H
 1920' FNL and 300' FEL Surface Hole Location
 660' FNL and 330' FWL Bottom Hole Location
 Section 25-T21S-R31E
 Eddy County, New Mexico

1. The estimated tops of geologic markers are as follows:

	Vertical(TVD)		Vertical(TVD)	Lateral(MD)
Rustler	826'	Brushy Canyon Mkr	8168'	8512'
Top of Salt	1146'	Target-Basal Sand	8358'-Oil	8983'
Bottom of Salt	4086'	Bone Springs	8466'-Oil	
Bell Canyon	4476'	TD (Pilot Hole)	8566'	
Cherry Canyon	5547'-Oil	MTD (Lateral)	8550'	13018'
Brushy Canyon	7274'-Oil			

2. The estimated depths at which anticipated water, oil or gas formations are expected to be encountered:

Water: 150'

Oil or Gas: Oil Zones: 5547', 7274', 8358' & 8466'.

3. Pressure Control Equipment: ^{13 3/8}BOPE will be installed on the 13 3/8" and the 9 5/8" casing and rated for 3000# BOP System. Pressure tests will be conducted before drilling out from under all casing strings, which are set and cemented in place. Blowout Preventer controls will be installed prior to drilling the surface plug and will remain in use until the well is completed or abandoned. Preventers will be inspected and operated at least daily to ensure good mechanical working order, and this inspection recorded on the daily drilling report. See Exhibit B.
4. Auxiliary Equipment: Kelly cock, pit level indicators, flow sensor equipment, and a sub with full opening valve to fit the drill pipe and collars will be available on the rig floor in the open position at all times for use when Kelly is not in use.
5. THE PROPOSED CASING AND CEMENTING PROGRAM:

A. Casing Program: All new casing to be used

<u>Hole Size</u>	<u>Casing Size</u>	<u>Wt./Ft</u>	<u>Grade</u>	<u>Coupling</u>	<u>Interval</u>	<u>Length</u>
17 1/2"	13 3/8"	48#	H-40	ST&C	0-900'	900'
12 1/4"	9 5/8"	40#	J-55	ST&C	0-100'	100'
12 1/4"	9 5/8"	36#	J-55	ST&C	100'-3300'	3200'
12 1/4"	9 5/8"	40#	J-55	ST&C	3300'-4250'	950'
12 1/4"	9 5/8"	40#	HCK-55	ST&C	4250'-4600'	350'
8 3/4" Pilot Hole						
7 7/8"	5.1/2"	17#	P- 110	LT&C	0'-13018'	13018'

Minimum Casing Design Factors: Burst 1.0, Tensile Strength 1.8, Collapse 1.125

B. CEMENTING PROGRAM:

Surface Casing: Lead with 600 sacks C Lite (Yld 1.64 Wt. 14.80). Tail in with 250 sacks Class C (Yld. 1.34 Wt. 14.80). TOC surface.

Intermediate Casing: Lead with 1425 sacks of Poz C (Yld. 1.96 Wt 12.60). Tail in with 100 sacks Class C (Yld. 1.34 Wt. 14.80). TOC surface

Production Casing: Cement to be done in two stages with stage tools at approx. 6000'.

Stage One: Cement with 1450 sacks Pecos Valley Lite (Yld 1.83 Wt 13.00). TOC 6000'.

Stage Two: Lead with 300 sacks Lite Crete (Yld. 2.66 Wt 9.90). Tail in with 100 sacks Pecos Valley Lite (Yld. 1.41 Wt 13.00). TOC 4100'. *Surface See COA*

See COA Pilot hole drilled vertically to 8566'. Well will be plugged back with a 400'-500' kick off plug, then kicked off at 7400' and directionally drilled at 12 degrees per 100' with a 7 7/8" hole to 8983' MD (8358' TVD). 7 7/8" hole will then be drilled to 13018' MD (8358' TVD) where 5 1/2" casing will be run and cemented in place. Penetration point of producing zone will be encountered at 990' FNL & 990' FEL, 25-21S-31E. Deepest TVD in the pilot hole is 8566', Deepest TVD in the lateral will be 8358'. *8550*

6. MUD PROGRAM AND AUXILIARY EQUIPMENT:

<u>Interval</u>	<u>Type</u>	<u>Weight</u>	<u>Viscosity</u>	<u>Fluid Loss</u>
0-900'	Fresh Water	8.60-9.20	29-36	N/C
900'-4600'	Brine Water	10.00-10.20	28-30	N/C
4600'-8566'	Cut Brine (Pilot Hole)	8.90-9.10	28-29	N/C
7400'-13018'	Cut Brine (Lateral Section)	9.00-9.30	28-34	<=15

Sufficient mud material(s) to maintain mud properties, control lost circulation and contain a blow out will be available at the well site during drilling operations. Rig personnel will check mud hourly.

7. EVALUATION PROGRAM:

Samples: 30' samples to 4400'. 10' samples from 4400' to TD. Mudloggers on at surface casing
 Logging: Platform Hals, CMR (DLWR), NGT *See COA*
 Coring: None anticipated
 DST's: None Anticipated

8. ABNORMAL CONDITIONS, BOTTOM HOLE PRESSURE, AND POTENTIAL HAZARDS:

Maximum Anticipated BHP:

0'-900'	431 PSI
900'-4600'	2440 PSI
4600'-8566'	4053 PSI

Abnormal Pressures Anticipated: None

Lost Circulation Zones Anticipated: None.

H2S Zones Anticipated: None Anticipated *See COA*

Maximum Bottom Hole Temperature: 150 F

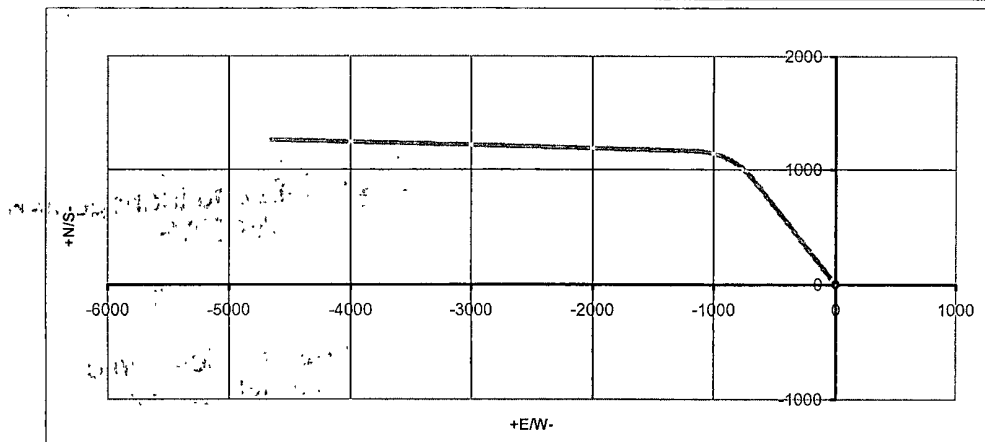
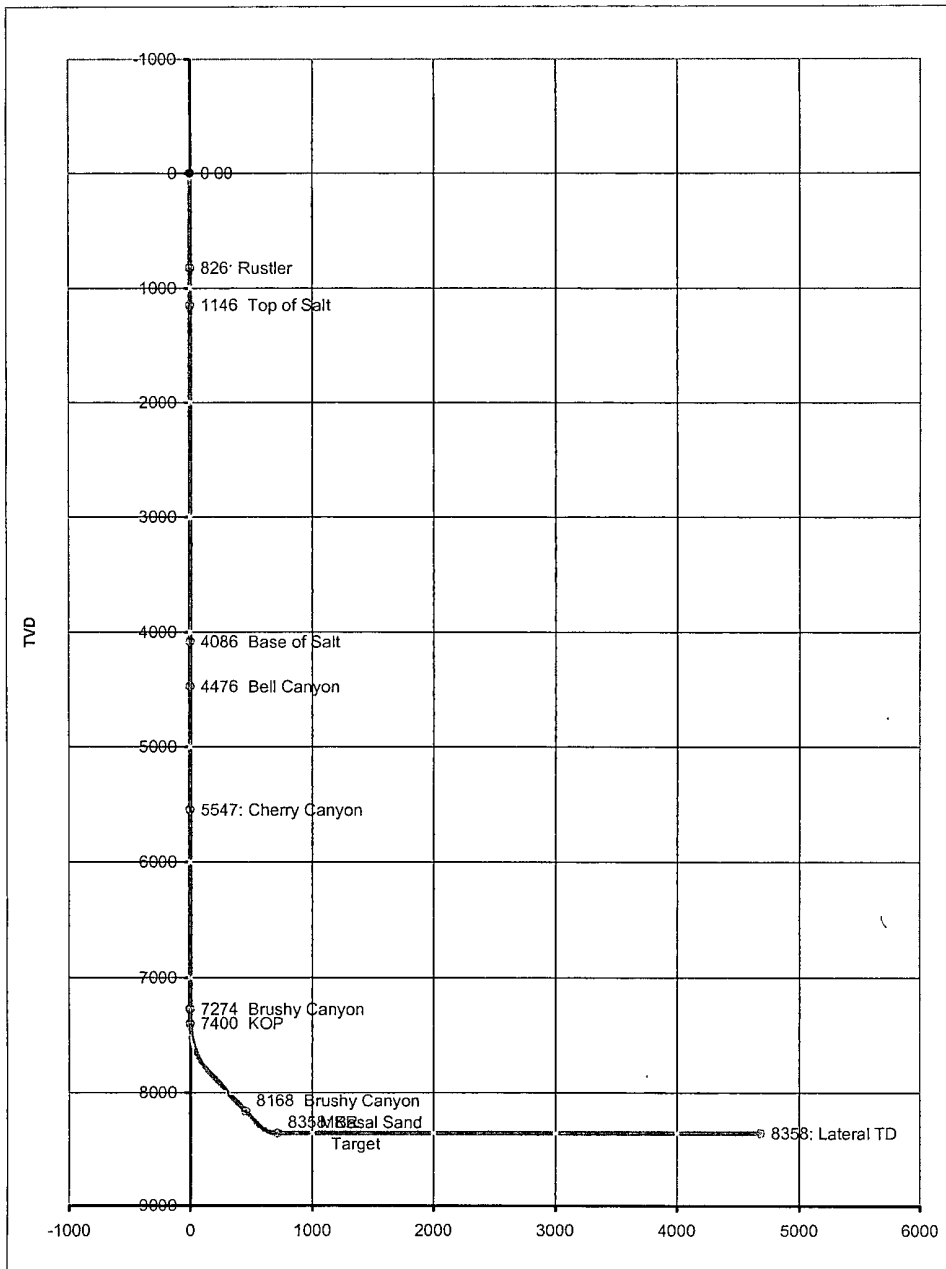
9. ANTICIPATED STARTING DATE:

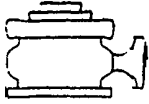
Plans are to drill this well as soon as possible after receiving approval. It should take approximately 60 days to drill the well with completion taking another 20 days.

Co: Yates Petroleum Corporation			Units: Feet, ° 7100ft		VS Az: 271.61		Tgt TVD: 0.00	
Drillers: 0			Elevation: 0.00		Tgt Radius: 0.00		Tgt MD: 0.00	
Well Name: Wolf AJA Federal #17H			Northing: 0.00		Tgt N/S: 0.00		Tgt Displ.: 0.00	
Location: 0			Easting: 0.00		Tgt E/W: 0.00		Method: Minimum Curvature	

No	MD	CL	Inc	Azi	TVD	VS	+N/S-	+E/W-	BR	WR	DLS	Comments
1	0.00	0.00	0.00	0.00	0.00	0.00	0.00	0.00	0.00	0.00	0.00	
2	826.00	826.00	0.00	0.00	826.00	0.00	0.00	0.00	0.00	0.00	0.00	Rustler
3	1146.00	320.00	0.00	0.00	1146.00	0.00	0.00	0.00	0.00	0.00	0.00	Top of Salt
4	4086.00	2940.00	0.00	0.00	4086.00	0.00	0.00	0.00	0.00	0.00	0.00	Base of Salt
5	4476.00	390.00	0.00	0.00	4476.00	0.00	0.00	0.00	0.00	0.00	0.00	Bell Canyon
6	5547.00	1071.00	0.00	0.00	5547.00	0.00	0.00	0.00	0.00	0.00	0.00	Cherry Canyon
7	7274.00	1727.00	0.00	0.00	7274.00	0.00	0.01	0.00	0.00	0.00	0.00	Brushy Canyon
8	7400.00	7400.00	0.00	0.00	7400.00	0.00	0.01	0.00	0.00	0.00	0.00	KOP
9	7425.00	25.00	3.00	323.43	7424.99	0.40	0.53	-0.39	12.00	146.28	12.00	
10	7450.00	25.00	6.00	323.43	7449.91	1.62	2.11	-1.56	12.00	0.00	12.00	
11	7475.00	25.00	9.00	323.43	7474.69	3.63	4.73	-3.50	12.00	0.00	12.00	
12	7500.00	25.00	12.00	323.43	7499.27	6.45	8.39	-6.22	12.00	0.00	12.00	
13	7525.00	25.00	15.00	323.43	7523.58	10.06	13.07	-9.69	12.00	0.00	12.00	
14	7550.00	25.00	18.00	323.43	7547.54	14.45	18.77	-13.92	12.00	0.00	12.00	
15	7575.00	25.00	21.00	323.43	7571.11	19.60	25.48	-18.89	12.00	0.00	12.00	
16	7600.00	25.00	24.00	323.43	7594.20	25.52	33.16	-24.59	12.00	0.00	12.00	
17	7625.00	25.00	27.00	323.43	7616.76	32.17	41.80	-31.01	12.00	0.00	12.00	
18	7650.00	25.00	30.00	323.43	7638.73	39.54	51.38	-38.11	12.00	0.00	12.00	
19	7675.00	25.00	33.00	323.43	7660.05	47.61	61.87	-45.89	12.00	0.00	12.00	
20	7700.00	25.00	36.00	323.43	7680.65	56.37	73.24	-54.33	12.00	0.00	12.00	
21	7725.00	25.00	39.00	323.43	7700.48	65.77	85.46	-63.40	12.00	0.00	12.00	
22	7750.00	25.00	42.00	323.43	7719.49	75.81	98.50	-73.07	12.00	0.00	12.00	
23	7775.00	25.00	45.00	323.43	7737.62	86.44	112.32	-83.32	12.00	0.00	12.00	
24	7800.00	25.00	48.00	323.43	7754.83	97.65	126.88	-94.12	12.00	0.00	12.00	
25	7825.00	25.00	51.00	323.43	7771.06	109.40	142.15	-105.45	12.00	0.00	12.00	
26	7850.00	25.00	54.00	323.43	7786.28	121.66	158.08	-117.26	12.00	0.00	12.00	
27	7856.46	6.46	54.78	323.43	7790.04	124.91	162.30	-120.39	12.07	0.00	12.07	
28	8511.82	655.36	54.78	323.43	8168.00	455.85	592.29	-439.38	0.00	0.00	0.00	Brushy Canyon MKR
29	8689.59	833.13	54.78	323.43	8270.52	545.62	708.92	-525.91	0.00	0.00	0.00	
30	8700.00	10.41	56.03	323.43	8276.43	550.92	715.80	-531.02	12.01	0.00	12.01	
31	8725.00	25.00	59.02	323.43	8289.85	563.95	732.74	-543.58	11.96	0.00	11.96	
32	8750.00	25.00	62.03	323.43	8302.15	577.40	750.22	-556.55	12.04	0.00	12.04	
33	8775.00	25.00	65.02	323.43	8313.29	591.24	768.19	-569.88	11.96	0.00	11.96	
34	8800.00	25.00	68.03	323.43	8323.25	605.41	786.60	-583.54	12.04	0.00	12.04	
35	8825.00	25.00	71.02	323.43	8332.00	619.88	805.41	-597.49	11.96	0.00	11.96	
36	8850.00	25.00	74.03	323.43	8339.50	634.62	824.56	-611.70	12.04	0.00	12.04	
37	8875.00	25.00	77.02	323.43	8345.75	649.58	844.00	-626.12	11.96	0.00	11.96	
38	8900.00	25.00	80.03	323.43	8350.72	664.73	863.67	-640.71	12.04	0.00	12.04	
39	8925.00	25.00	83.02	323.43	8354.41	680.01	883.53	-655.44	11.96	0.00	11.96	
40	8950.00	25.00	86.03	323.43	8356.79	695.39	903.52	-670.27	12.04	0.00	12.04	
41	8975.00	25.00	89.03	323.43	8357.87	710.83	923.57	-685.15	12.00	0.00	12.00	
42	8983.10	8.10	90.00	323.43	8358.00	715.83	930.08	-689.97	11.97	0.00	11.97	Basal Sand Target

No.	MD	CL	Inc.	Azi.	TVD	VS	+N/S-	+E/W-	BR	WR	DLS	Comments
43	8983.10	0.00	90.00	323.43	8358.00	715.83	930.08	-689.97	0.00	0.00	0.00	
44	8983.10	0.00	90.00	323.43	8358.00	715.83	930.08	-689.97	0.00	0.00	0.00	
45	9000.00	16.90	90.00	321.74	8358.00	726.47	943.50	-700.24	0.00	-10.00	10.00	
46	9025.00	25.00	90.00	319.24	8358.00	742.91	962.79	-716.15	0.00	-10.00	10.00	
47	9050.00	25.00	90.00	316.74	8358.00	760.16	981.36	-732.88	0.00	-10.00	10.00	
48	9075.00	25.00	90.00	314.24	8358.00	778.18	999.19	-750.40	0.00	-10.00	10.00	
49	9100.00	25.00	90.00	311.74	8358.00	796.94	1016.23	-768.69	0.00	-10.00	10.00	
50	9125.00	25.00	90.00	309.24	8358.00	816.40	1032.46	-787.70	0.00	-10.00	10.00	
51	9150.00	25.00	90.00	306.74	8358.00	836.52	1047.85	-807.40	0.00	-10.00	10.00	
52	9175.00	25.00	90.00	304.24	8358.00	857.27	1062.36	-827.75	0.00	-10.00	10.00	
53	9200.00	25.00	90.00	301.74	8358.00	878.62	1075.98	-848.72	0.00	-10.00	10.00	
54	9225.00	25.00	90.00	299.24	8358.00	900.51	1088.66	-870.26	0.00	-10.00	10.00	
55	9250.00	25.00	90.00	296.74	8358.00	922.90	1100.39	-892.34	0.00	-10.00	10.00	
56	9275.00	25.00	90.00	294.24	8358.00	945.76	1111.15	-914.90	0.00	-10.00	10.00	
57	9300.00	25.00	90.00	291.74	8358.00	969.04	1120.91	-937.91	0.00	-10.00	10.00	
58	9325.00	25.00	90.00	289.24	8358.00	992.69	1129.66	-961.33	0.00	-10.00	10.00	
59	9350.00	25.00	90.00	286.74	8358.00	1016.67	1137.38	-985.11	0.00	-10.00	10.00	
60	9375.00	25.00	90.00	284.24	8358.00	1040.94	1144.06	-1009.20	0.00	-10.00	10.00	
61	9400.00	25.00	90.00	281.74	8358.00	1065.45	1149.68	-1033.55	0.00	-10.00	10.00	
62	9425.00	25.00	90.00	279.24	8358.00	1090.15	1154.23	-1058.13	0.00	-10.00	10.00	
63	9450.00	25.00	90.00	276.74	8358.00	1114.99	1157.71	-1082.89	0.00	-10.00	10.00	
64	9475.00	25.00	90.00	274.24	8358.00	1139.93	1160.10	-1107.77	0.00	-10.00	10.00	
65	9500.00	25.00	90.00	271.74	8358.00	1164.92	1161.40	-1132.74	0.00	-10.00	10.00	
66	9501.30	1.30	90.00	271.61	8358.00	1166.22	1161.44	-1134.04	-0.01	-10.01	10.01	
67	13018.61	3517.31	90.00	271.61	8358.00	4683.53	1260.26	-4649.96	0.00	0.00	0.00	Lateral TD

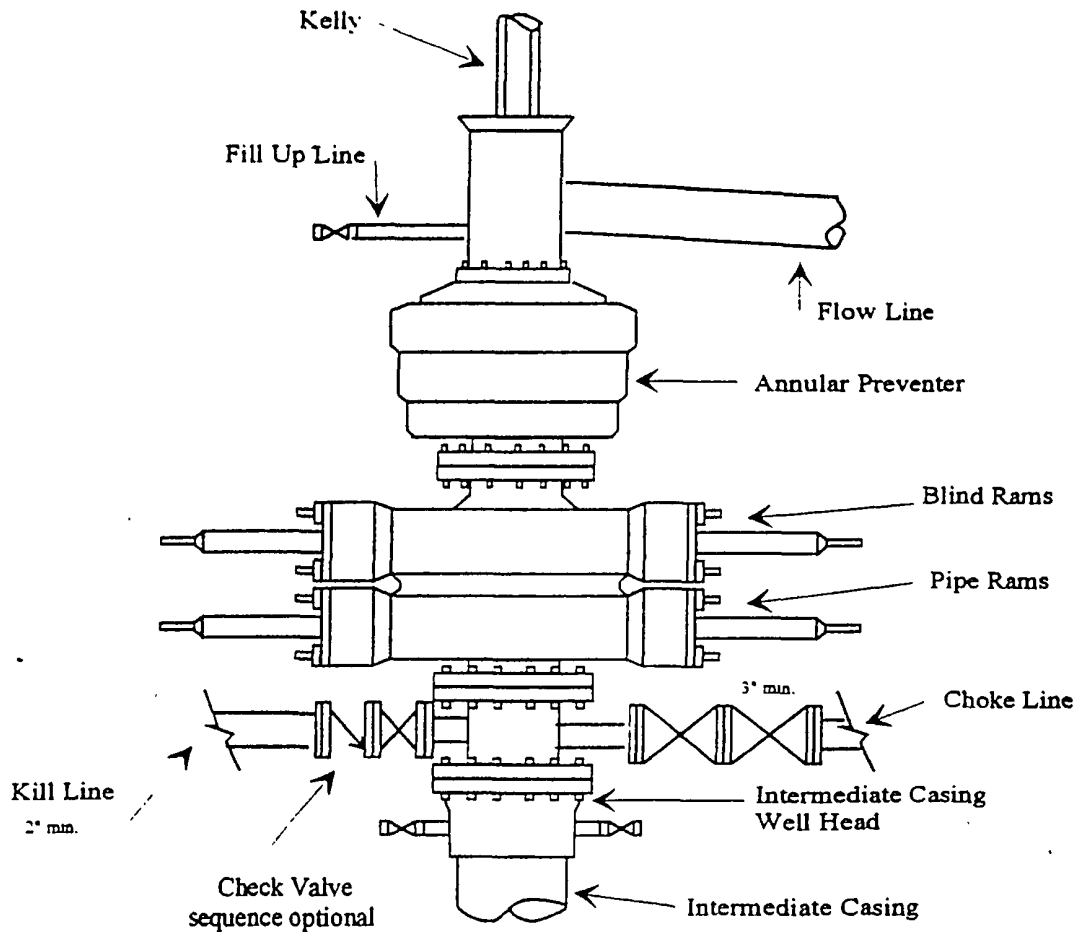




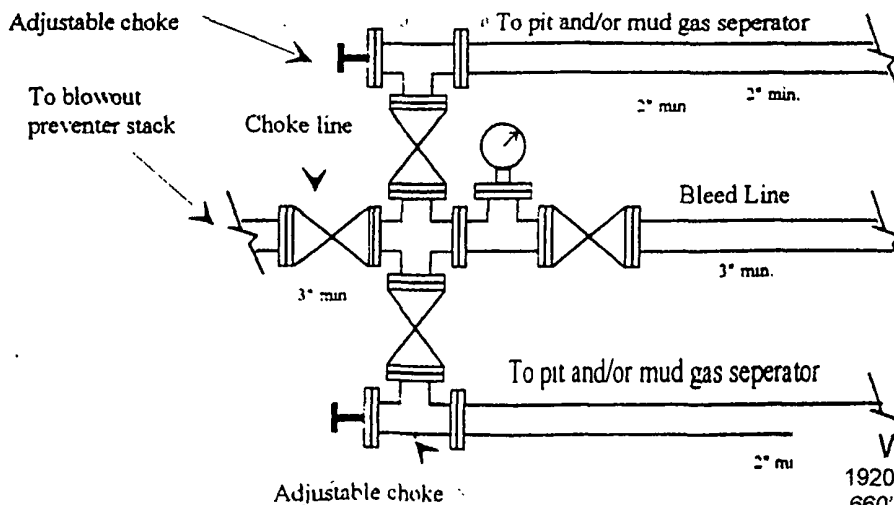
Yates Petroleum Corporation

BOP-3

Typical 3,000 psi Pressure System Schematic Annular with Double Ram Preventer Stack

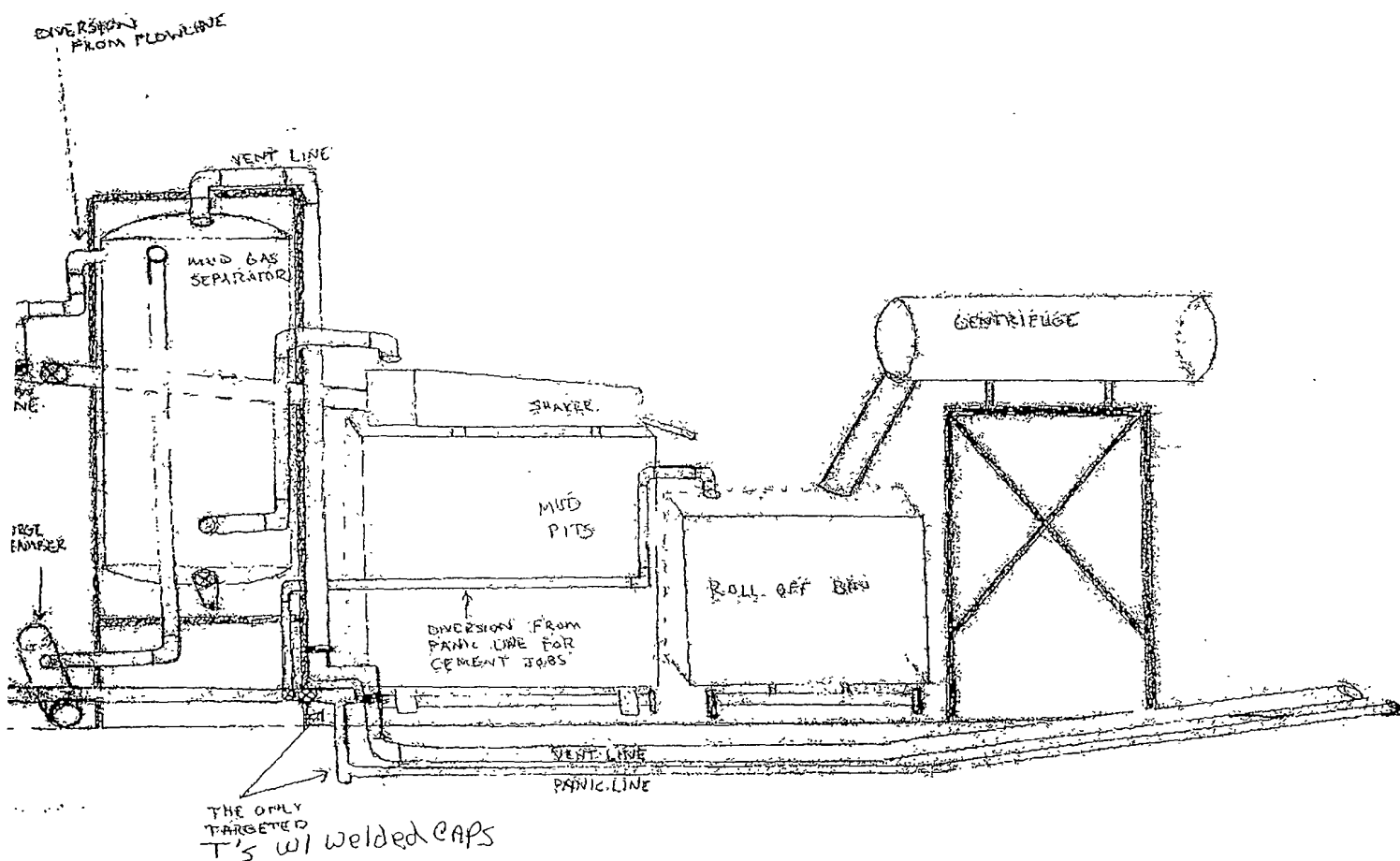


Typical 3,000 psi choke manifold assembly with at least these minimum features

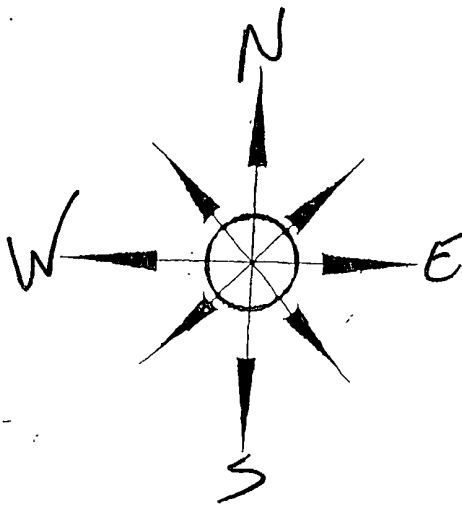


Wolf AJA Federal #17H
1920' FNL and 300' FEL Surface Hole
660' FNL and 330' FWL Bottom Hole
Section 25, T21S-R31E
Eddy County, New Mexico
Exhibit "B"

YATES PETROLEUM CORPORATION
Piping from Choke Manifold
to the Closed-Loop Drilling Mud System



Wolf AJA Federal #17H
1920' FNL and 300' FEL Surface Hole
660' FNL and 330' FWL Bottom Hole
Section 25, T21S-R31E
Eddy County, New Mexico
Exhibit "C-1"



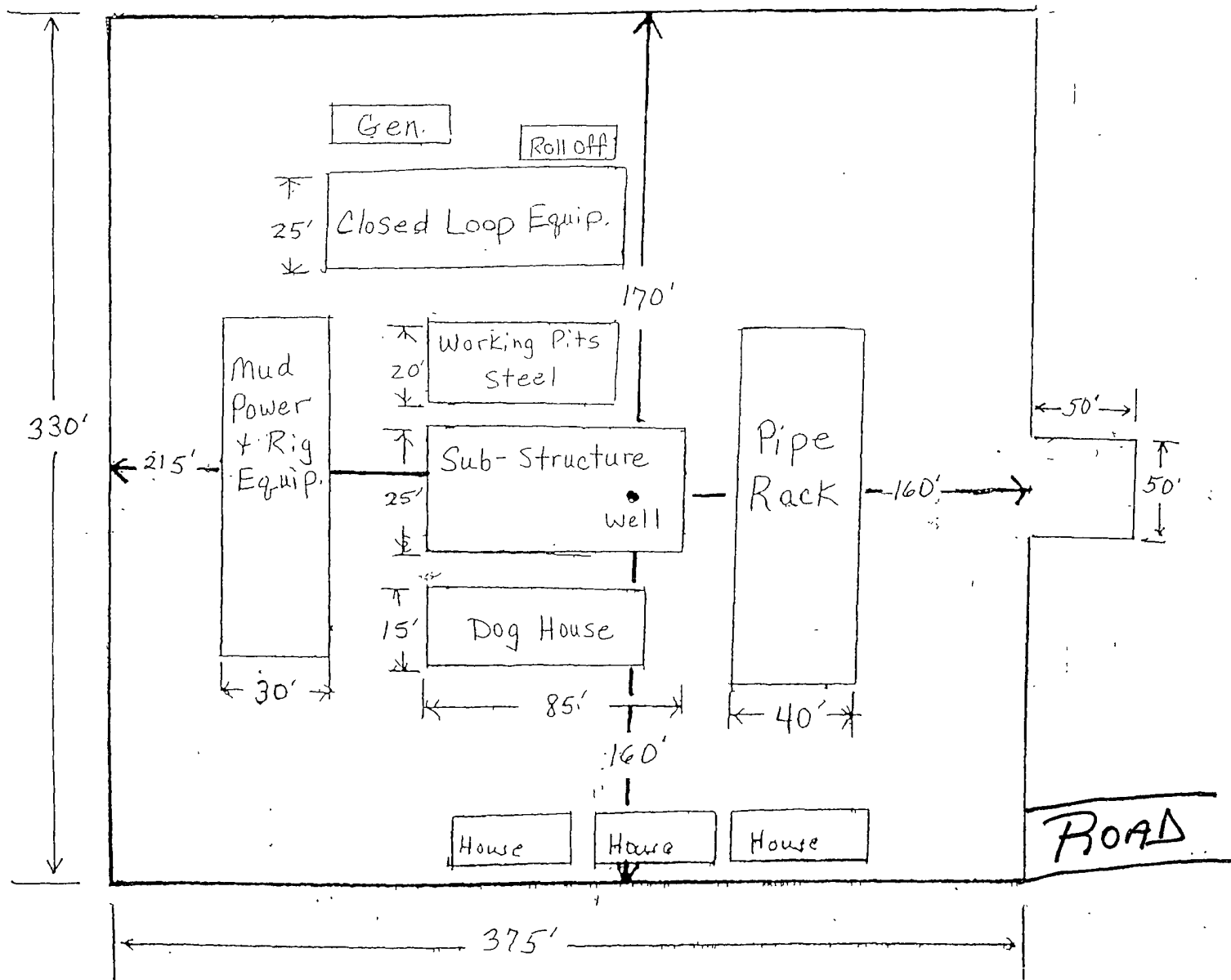
Yates Petroleum Corporation

Location Layout for Permian Basin

Closed Loop Design Plan

YATES PETROLEUM CORPORATION
Wolf AJA Federal #17H
1920' FNL and 300' FEL SHL
330' FNL and 1980' FEL BHL
Section 25, T21S-R31E
Eddy County, New Mexico Exhibit C

* NOT TO SCALE



30-015-39829

Yates Petroleum Corporation

105 S. Fourth Street

Artesia, NM 88210

Hydrogen Sulfide (H₂S) Contingency Plan

For

Wolf AJA Federal #17H

1920' FNL and 300' FEL Surface Hole Location

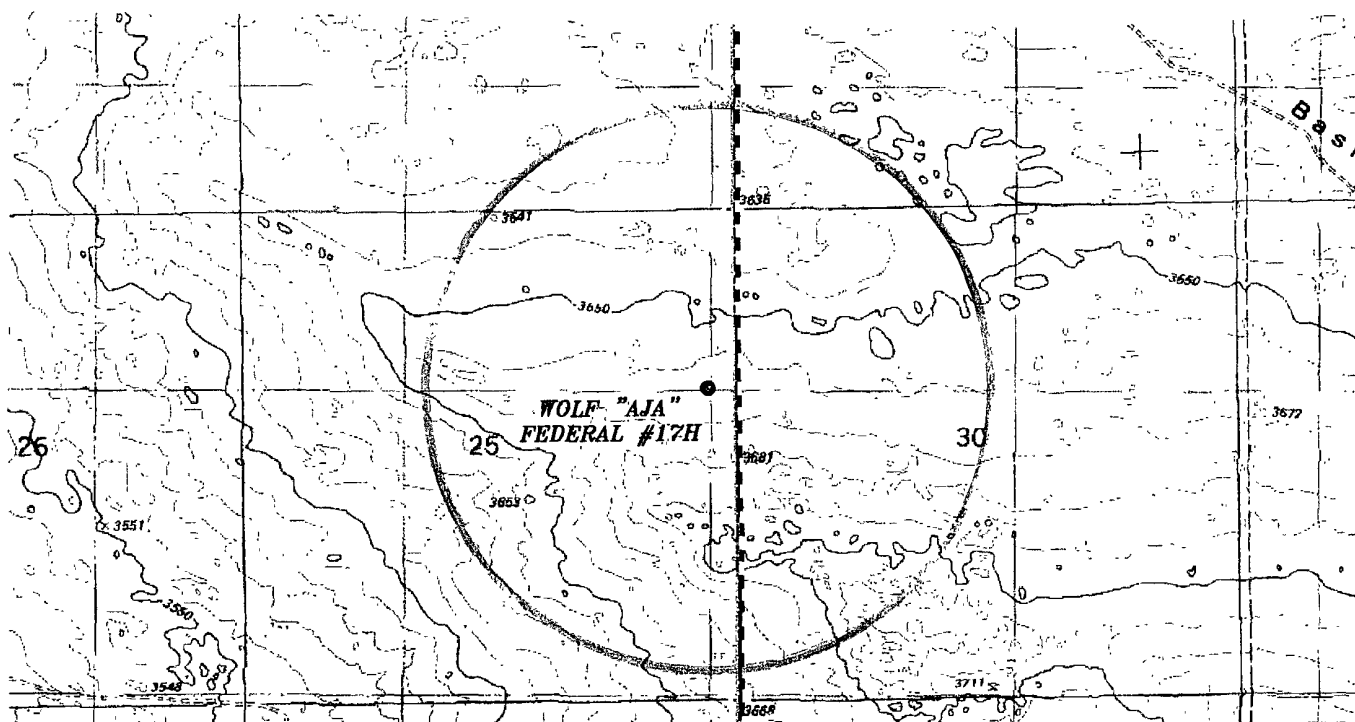
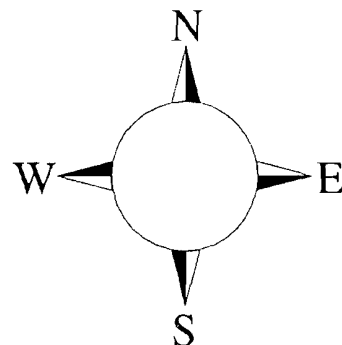
660' FNL and 330' FWL Bottom Hole Location

Section 25, T-21S, R-31E

Eddy County NM

Wolf AJA Federal #17H

This is an open drilling site. H₂S monitoring equipment and emergency response equipment will be used within 500' of zones known to contain H₂S, including warning signs, wind indicators and H₂S monitor.



WOLF "AJA" FEDERAL #17H

Located 1920' FNL and 300' FEL

Section 25, Township 21 South, Range 31 East,
N.M.P.M., Eddy County, New Mexico.

Assumed 100 ppm ROE = 3000'

100 ppm H₂S concentration shall trigger activation of this plan.

Emergency Procedures

In the case of a release of gas containing H₂S, the first responder(s) must isolate the area and prevent entry by other persons into the 100 ppm ROE. Additionally the first responder(s) must evacuate any public places encompassed by the 100 ppm ROE. First responder(s) must take care not to injure themselves during this operation. Company and/or local officials must be contacted to aid in this operation. Evacuation of the public should be beyond the 100 ppm ROE.

All responders must have training in the detection of H₂S, measures for protection against the gas, equipment used for protection and emergency response. Additionally, responders must be equipped with H₂S monitors and air packs in order to control the release. Use the “buddy system” to ensure no injuries during the response.

Ignition of Gas Source

Should control of the well be considered lost and ignition considered, take care to protect against exposure to Sulfur Dioxide (SO₂). Intentional ignition must be coordinated with the NMOCD and local officials. Additionally the NM State Police may become involved. NM State Police shall be the Incident Command on scene of any major release. Take care to protect downwind whenever there is an ignition of the gas

Characteristics of H₂S and SO₂

Common Name	Chemical Formula	Specific Gravity	Threshold Limit	Hazardous Limit	Lethal Concentration
Hydrogen Sulfide	H ₂ S	1.189 Air = 1	10 ppm	100 ppm/hr	600 ppm
Sulfur Dioxide	SO ₂	2.21 Air = 1	2 ppm	N/A	1000 ppm

Contacting Authorities

YPC personnel must liaison with local and state agencies to ensure a proper response to a major release. Additionally, the OCD must be notified of the release as soon as possible but no later than 4 hours. Agencies will ask for information such as type and volume of release, wind direction, location of release, etc. Be prepared with all information available. The following call list of essential and potential responders has been prepared for use during a release. YPC Company response must be in coordination with the State of New Mexico’s ‘Hazardous Materials Emergency Response Plan’ (HMER)

Yates Petroleum Corporation Phone Numbers

YPC Office	(575) 748-1471
Darrick Stallings/Operations Manager	(575) 748-4198
Wade Bennett/Prod Superintendent	(575) 748-4236
LeeRoy Richards/Assistant Prod Superintendent	(575) 748-4228
Mike Larkin/Drilling	(575) 748-4222
Paul Hanes/Prod. Foreman/Roswell	(575) 624-2805
Tim Bussell/Drilling Superintendent	(575) 748-4221
Artesia Answering Service	(575) 748-4302
(During non-office hours)	

Agency Call List

Eddy County (575)

Artesia

State Police	746-2703
City Police.....	746-2703
Sheriff's Office	746-9888
Ambulance.....	911
Fire Department	746-2701
LEPC (Local Emergency Planning Committee)	746-2122
NMOCD.....	748-1283

Carlsbad

State Police	885-3137
City Police.....	885-2111
Sheriff's Office.....	887-7551
Ambulance.....	911
Fire Department	885-2111
LEPC (Local Emergency Planning Committee).....	887-3798
US Bureau of Land Management.....	887-6544
New Mexico Emergency Response Commission (Santa Fe)	(505) 476-9600
24 HR	(505) 827-9126
New Mexico State Emergency Operations Center	(505) 476-9635
National Emergency Response Center (Washington, DC)(800) 424-8802

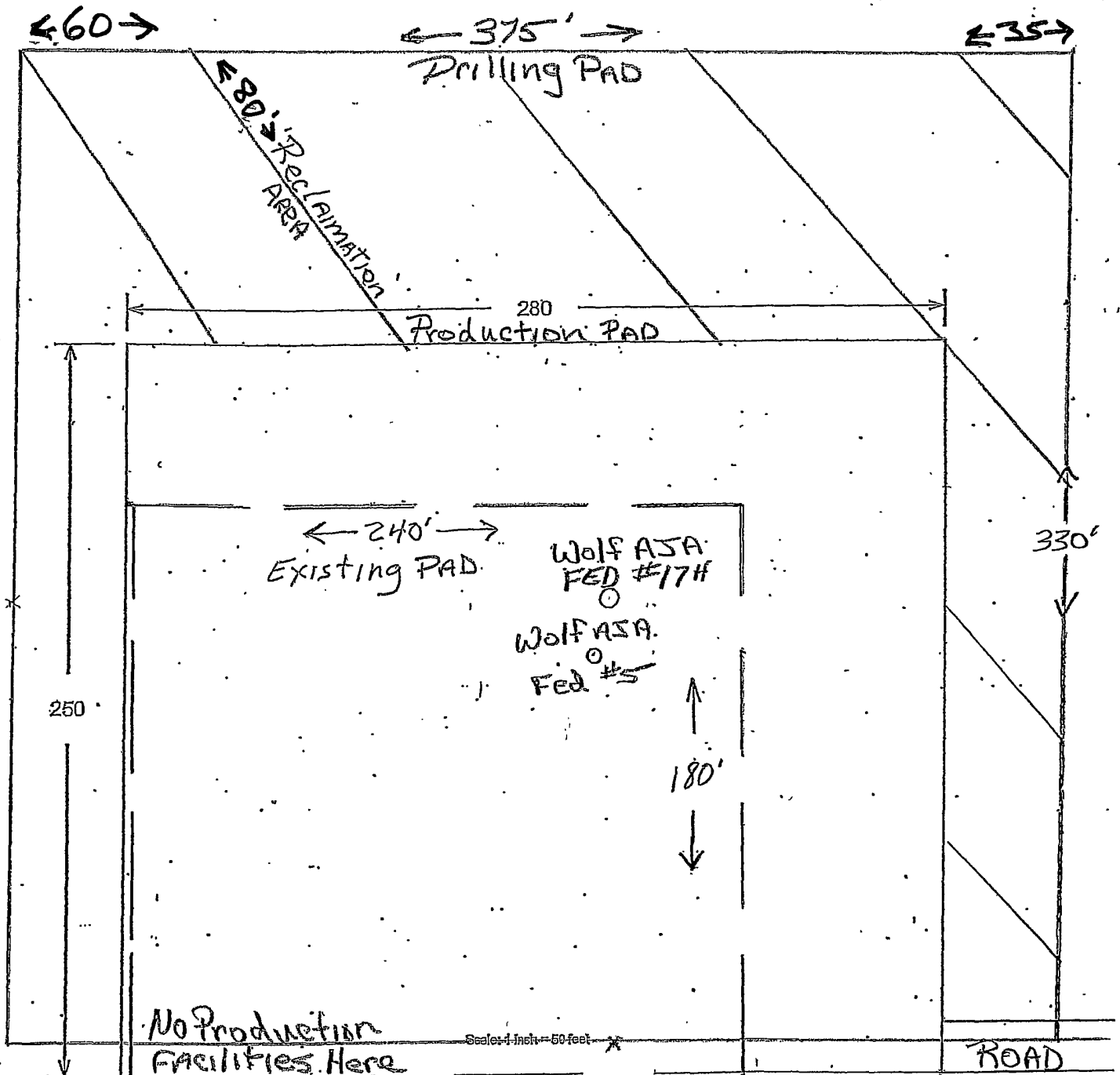
Other

Boots & Coots IWC	1-800-256-9688 or (281) 931-8884
Cudd Pressure Control.....	(915) 699-0139 or (915) 563-3356
Halliburton	(575) 746-2757
B. J. Services.....	(575) 746-3569

Flight For Life -4000 24th St, Lubbock, TX(806) 743-9911
Aerocare -Rr 3 Box 49f, Lubbock, TX(806) 747-8923
Med Flight Air Amb 2301 Yale Blvd SE #D3, Albuq, NM(505) 842-4433
S B Air Med Svc 2505 Clark Carr Loop SE, Albuq, NM(505) 842-4949

YATES PETROLEUM CORPORATION

YATES PETROLEUM CORPORATION
WOLF AJA FEDERAL #17H
RECLAMATION PLAN



WF 10/28/11
10/7/11

YATES PETROLEUM CORPORATION
Wolf AJA Federal #17H
1920' FNL and 330' FEL, Surface Hole
660' FNL and 330' FWL, Bottom Hole
Section 25, T21S-R31E
Eddy County, New Mexico

Plans for Interim and Final Surface Reclamation.

1. Well location will be contoured to resemble the original topography as closely as possible. Surface reclamation measures will be taken to avoid new erosion on the well location and the area surrounding the well location. These measures will be overseen by Yates' personnel following a structured plan for the reclamation of each individual site.
2. Major drainage systems will be avoided as determined at the onsite with the BLM. Minor drainages may be rerouted around the well site within the 600' x 600' cleared area to avoid moving the well location.
3. Segregation of topsoil or like soils will be placed in low lift rows rather than in a stockpile just off the caliche well pad. Placement of these lift rows will be determined at the BLM onsite or at the time of construction by Yates Personnel.
4. Yates will use prudent oil field practices when constructing well locations and related facilities. Yates personnel will determine the size of the well location needed for safe working conditions for personnel during all aspects on the drilling and production process.
5. Back fill requirements for above ground reserve pits will be met by using cut, fill, and contouring of available top soil and like soils from the pit area. Should additional material be needed it will be brought in from a BLM approved source.
6. All topsoil will be spread over the area reclaimed during interim reclamation using a front end loader. For final reclamation enough topsoil will be evenly distributed between the interim reclaimed area and the final reclaimed area. This method of soil stabilization should help maintain the productivity and viability of the topsoil.
7. Soil treatments will be determined at the time of final reclamation by Yates' Environmental Specialist or other designated personnel to meet BLM final reclamation goals.
8. Reseeding of disturbed areas will be accordance with the seed mixtures attached to the approved APD as Conditions of Approval. Planting and soil preparation will be done during the rainy season between June 1st and September 1st.
9. Yates' personnel will control weeds during the productive period through final abandonment of the well. Yates may also use the option to hire a third party to be in charge of weed control or participate in the Chaves Soil and Water District program to pool monies for weed control.
10. Well pads, roads and related facilities with caliche or other surfacing material will be picked up or turned over at the time of final abandonment. These materials may be used on other projects in the area if possible or placed back in the caliche pit or other designated site. Buried pipelines will be left in place after being bled down and purged. Above surface support equipment will be removed or cut down below plow depth and removed. Pipeline right-of-ways will be reseeded according to BLM Best Management Practices.