

District I

1625 N French Dr., Hobbs, NM 88240
Phone (575) 393-6161 Fax (575) 393-0720

District II

811 S First St., Artesia, NM 88210
Phone (575) 748-1283 Fax (575) 748-9720

District III

1000 Rio Brazos Road, Aztec, NM 87410
Phone (505) 334-6178 Fax (505) 334-6170

District IV

1220 S St Francis Dr., Santa Fe, NM 87505
Phone (505) 476-3460 Fax (505) 476-3462

State of New Mexico

Form C-101
Revised October 25, 2012

Energy Minerals and Natural Resources

Oil Conservation Division

1220 South St. Francis Dr.

Santa Fe, NM 87505

☐ AMENDED REPORT

RECEIVED

NOV 14 2012

NM OGD ARTEZONA

APPLICATION FOR PERMIT TO DRILL, RE-ENTER, DEEPEN, PLUGBACK OR ADD A ZONE

1 Operator Name and Address DEVON ENERGY PRODUCTION COMPANY, L. PL 333 W. Sheridan Oklahoma City, Ok 73102		2 OGRID Number 6137
3 Property Name PARKWAY WEST SWD		5 API Number 30-05-40835
4 Property Code 39544	6 Well No. 1	

7. Surface Location

UL - Lot	Section	Township	Range	Lot Idn	Feet from	N/S Line	Feet From	E/W Line	County
D	27	19 S	29 E		1255	North	430	West	Eddy

8 Proposed Bottom Hole Location

UL - Lot	Section	Township	Range	Lot Idn	Feet from	N/S Line	Feet From	E/W Line	County
D	27	19 S	29 E		1255	North	430	West	Eddy

9. Pool Information

SWD; Yates-7 RVRS - QU-GB- SA	96140
-------------------------------	-------

Additional Well Information

11 Work Type N	12 Well Type SWD	13 Cable/Rotary R	14 Lease Type State	15 Ground Level Elevation 3341 4
16 Multiple S	17 Proposed Depth 2650'	18 Formation Grayburg GQSR	19 Contractor	20 Spud Date
Depth to Ground water		Distance from nearest fresh water well		Distance to nearest surface water

21. Proposed Casing and Cement Program

Type	Hole Size	Casing Size	Casing Weight/ft	Setting Depth	Sacks of Cement	Estimated TOC
J-55	12.25	9.625	40	450	225	Surface
L-80	8.75	7	26	2650	490	Surface

Casing/Cement Program: Additional Comments

--

22. Proposed Blowout Prevention Program

Type	Working Pressure	Test Pressure	Manufacturer
Tripple Ram	3000	3000	
Annular	3000	3000	

23. I hereby certify that the information given above is true and complete to the best of my knowledge and belief.

I further certify that I have complied with 19.15.14.9 (A) NMAC ☐ and/or 19.15.14.9 (B) NMAC ☐, if applicable.

Signature: *Judy A. Barnett*

Printed name: Judy A. Barnett

Title: Regulatory Specialist

OIL CONSERVATION DIVISION

Approved By: *L. C. Shepard*Title: *Geologist*Approved Date: *11/14/2012*Expiration Date: *11/14/2014*

E-mail Address: Judith.Barnett@dvn.com		
Date.11/13/12	Phone.405.228.86599	Conditions of Approval Attached

District I
1625 N. French Dr. Hobbs, NM 88240
Phone (505) 393-6161 Fax: (505) 393-0720
District II
511 S First St. Artesia, NM 87210
Phone (505) 748-1283 Fax: (505) 748-9720
District III
1000 Rio Brazos Road. Aztec, NM 87410
Phone (505) 334-6175 Fax (505) 334-6170
District IV
1220 S St Francis Dr. Santa Fe, NM 87505
Phone (505) 476-3460 Fax (505) 476-3462

State of New Mexico
Energy, Minerals & Natural Resources Department
OIL CONSERVATION DIVISION
1220 South St. Francis Dr.
Santa Fe, NM 87505

Form C-102
Revised August 1, 2011
Submit one copy to appropriate
District Office

☐ AMENDED REPORT

WELL LOCATION AND ACREAGE DEDICATION PLAT

¹ API Number 30-015-40835		² Pool Code 96140		³ Pool Name GRAYBURG (GOSRY) SWD. VATE-DRVS-QU-GB-SA	
⁴ Property Code 39544		⁵ Property Name PARKWAY WEST SWD			⁶ Well Number 1
⁷ OGRID No. 6137		⁸ Operator Name DEVON ENERGY PRODUCTION COMPANY, L.P.			⁹ Elevation 3341.4

¹⁰ Surface Location

UL or lot no.	Section	Township	Range	Lot Idn	Feet from the	North/South line	Feet from the	East/West line	County
D	27	19 S	29 E		1255	NORTH	430	WEST	EDDY

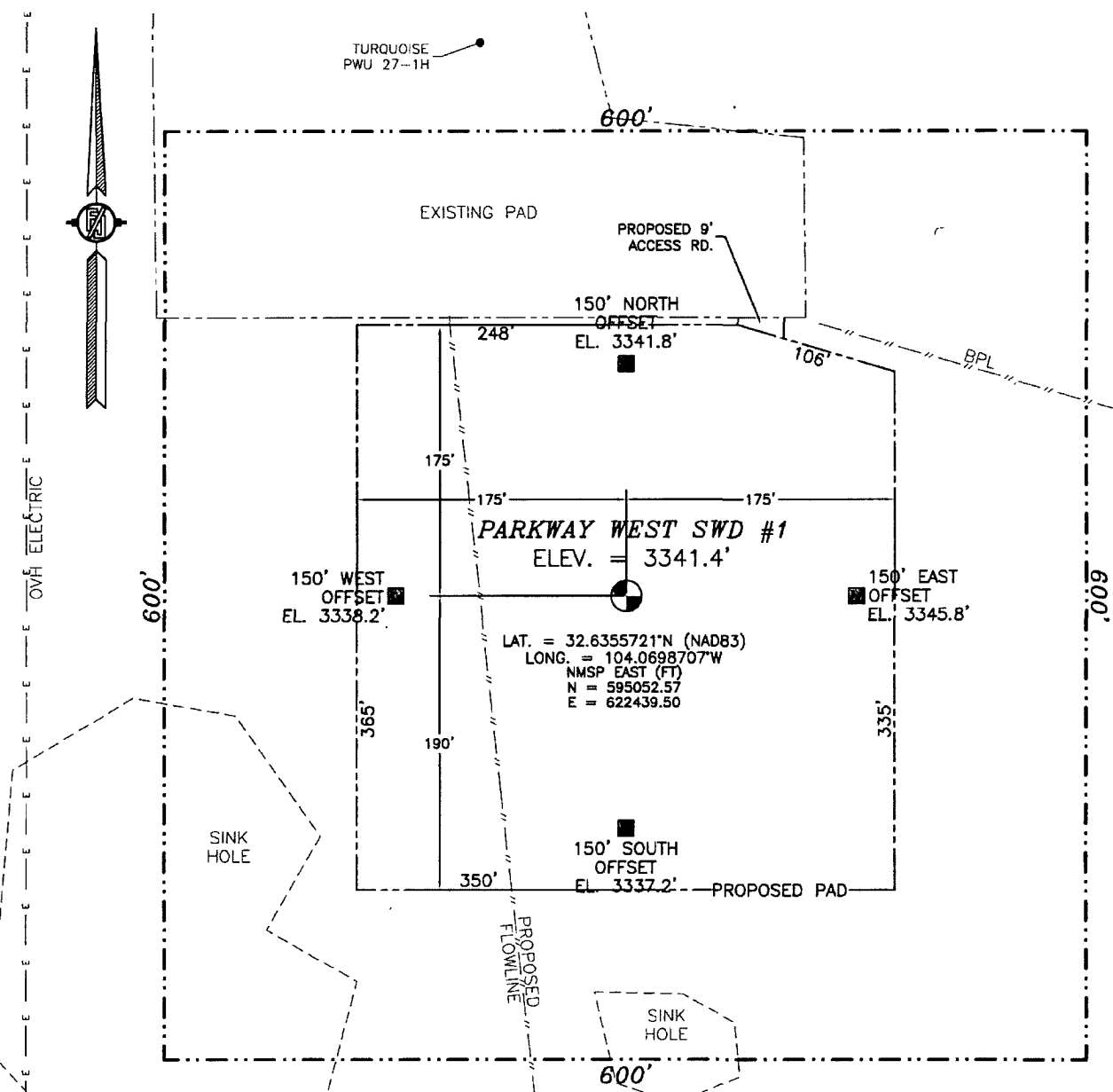
¹¹ Bottom Hole Location If Different From Surface

UL or lot no.	Section	Township	Range	Lot Idn	Feet from the	North/South line	Feet from the	East/West line	County

¹² Dedicated Acres 40	¹³ Joint or Infill	¹⁴ Consolidation Code	¹⁵ Order No.
--	-------------------------------	----------------------------------	-------------------------

No allowable will be assigned to this completion until all interests have been consolidated or a non-standard unit has been approved by the division.

<p>N89°22'07"W 2632.22 FT</p> <p>NW CORNER SEC 27 LAT. = 32.6390370°N LONG. = 104.0712463°W</p> <p>NMSP EAST (FT) N = 596312.05 E = 622012.94</p> <p>SURFACE LOCATION 430' PARKWAY WEST SWD #1 ELEV = 3341.4 LAT = 32.6355721°N (NAD83) LONG. = 104.0698707°W NMSP EAST (FT) N = 595052.57 E = 622439.50</p> <p>W O CORNER SEC 27 LAT = 32.6317485°N LONG. = 104.0712904°W NMSP EAST (FT) N = 593660.44 E = 622005.89</p> <p>SW CORNER SEC 27 LAT = 32.6244740°N LONG. = 104.0713099°W NMSP EAST (FT) N = 591013.90 E = 622006.42</p>		<p>S89°50'52"W 2635.86 FT</p> <p>NE CORNER SEC 27 LAT = 32.6389396°N LONG. = 104.0541330°W</p> <p>NMSP EAST (FT) N = 596290.05 E = 627280.86</p> <p>E O CORNER SEC 27 LAT = 32.6316834°N LONG. = 104.0541238°W NMSP EAST (FT) N = 593650.20 E = 627290.61</p> <p>SE CORNER SEC 27 LAT = 32.6244132°N LONG. = 104.0541300°W NMSP EAST (FT) N = 591005.28 E = 627295.67</p>		<p>¹⁷ OPERATOR CERTIFICATION I hereby certify that the information contained herein is true and complete to the best of my knowledge and belief and that this organization either owns a working interest or undivided mineral interest in the land including the proposed bottom hole location or has a right to drill this well at this location pursuant to a contract with an owner of such a mineral or working interest, or to a voluntary pooling agreement or a compulsory pooling order heretofore entered by the division.</p> <p>Signature: <i>Judy A. Barnett</i> Date: 11/13/12 Judy A. Barnett Regulatory Specialist Printed Name: _____ E-mail Address: _____</p>
<p>S89°54'24"E 2644.63 FT</p> <p>COMPUTED</p>		<p>¹⁸ SURVEYOR CERTIFICATION I hereby certify that the well location shown on this plat was plotted from field notes of actual surveys made by me or under my supervision, and that the same is true and correct to the best of my belief.</p> <p>SEPTEMBER 6, 2012 Date of Survey: _____ Signature: <i>James Jaramillo</i> Certificate Number: _____ JAMES JARAMILLO, PLS 12797 SURVEY NO 1266</p>		



SCALE 1" = 100'

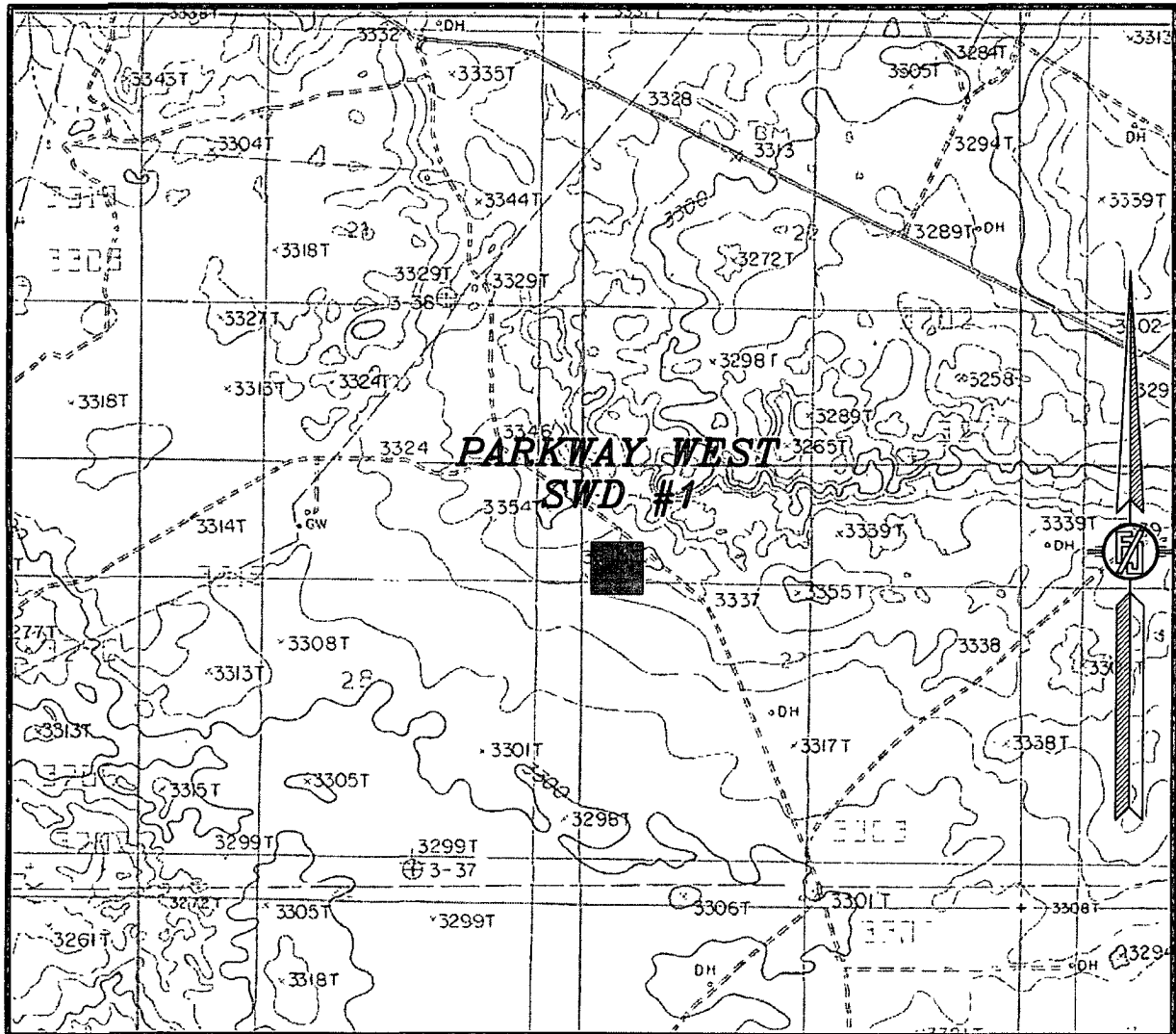
DIRECTIONS TO LOCATION

**DEVON ENERGY PRODUCTION COMPANY, L.P.
PARKWAY WEST SWD #1
LOCATED 1255 FT. FROM THE NORTH LINE
AND 430 FT. FROM THE WEST LINE OF
SECTION 27, TOWNSHIP 19 SOUTH,
RANGE 29 EAST, N.M.P.M.
EDDY COUNTY, STATE OF NEW MEXICO**

SURVEY NO. 1266

MADRON SURVEYING, INC. 301 SOUTH CANAL CARLSBAD, NEW MEXICO
(575) 234-3341

SECTION 27, TOWNSHIP 19 SOUTH, RANGE 29 EAST, N.M.P.M.
EDDY COUNTY, STATE OF NEW MEXICO
LOCATION VERIFICATION MAP



USGS QUAD MAP:
ILLINOIS CAMP NE

NOT TO SCALE

DEVON ENERGY PRODUCTION COMPANY, L.P.
PARKWAY WEST SWD #1

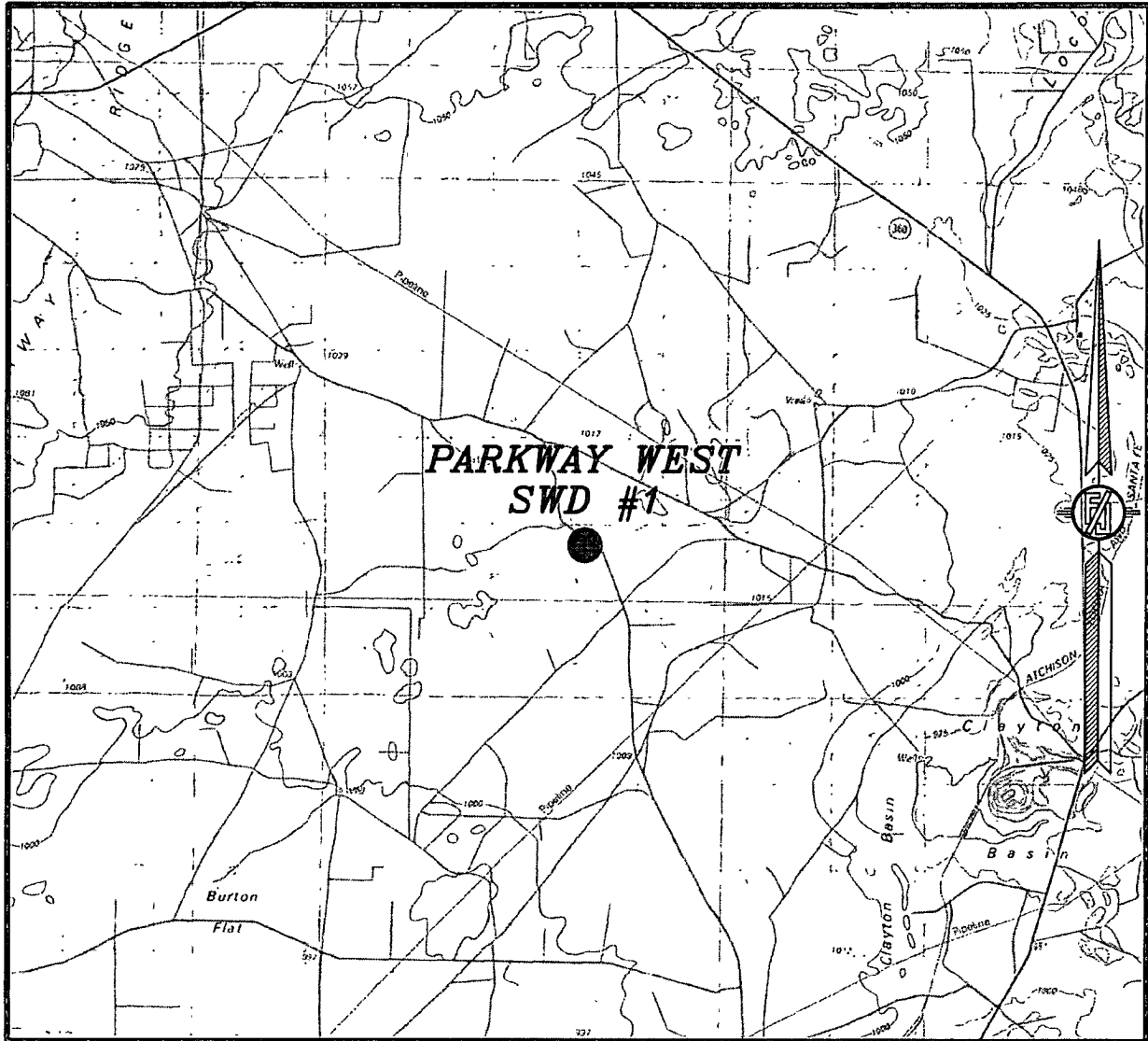
LOCATED 1255 FT. FROM THE NORTH LINE
AND 430 FT. FROM THE WEST LINE OF
SECTION 27, TOWNSHIP 19 SOUTH,
RANGE 29 EAST, N.M.P.M.
EDDY COUNTY, STATE OF NEW MEXICO

SEPTEMBER 6, 2012

SURVEY NO. 1266

MADRON SURVEYING, INC. 301 SOUTH CANAL (575) 234-3341 CARLSBAD, NEW MEXICO

SECTION 27, TOWNSHIP 19 SOUTH, RANGE 29 EAST, N.M.P.M.
EDDY COUNTY, STATE OF NEW MEXICO
VICINITY MAP



NOT TO SCALE

DEVON ENERGY PRODUCTION COMPANY, L.P.
PARKWAY WEST SWD #1

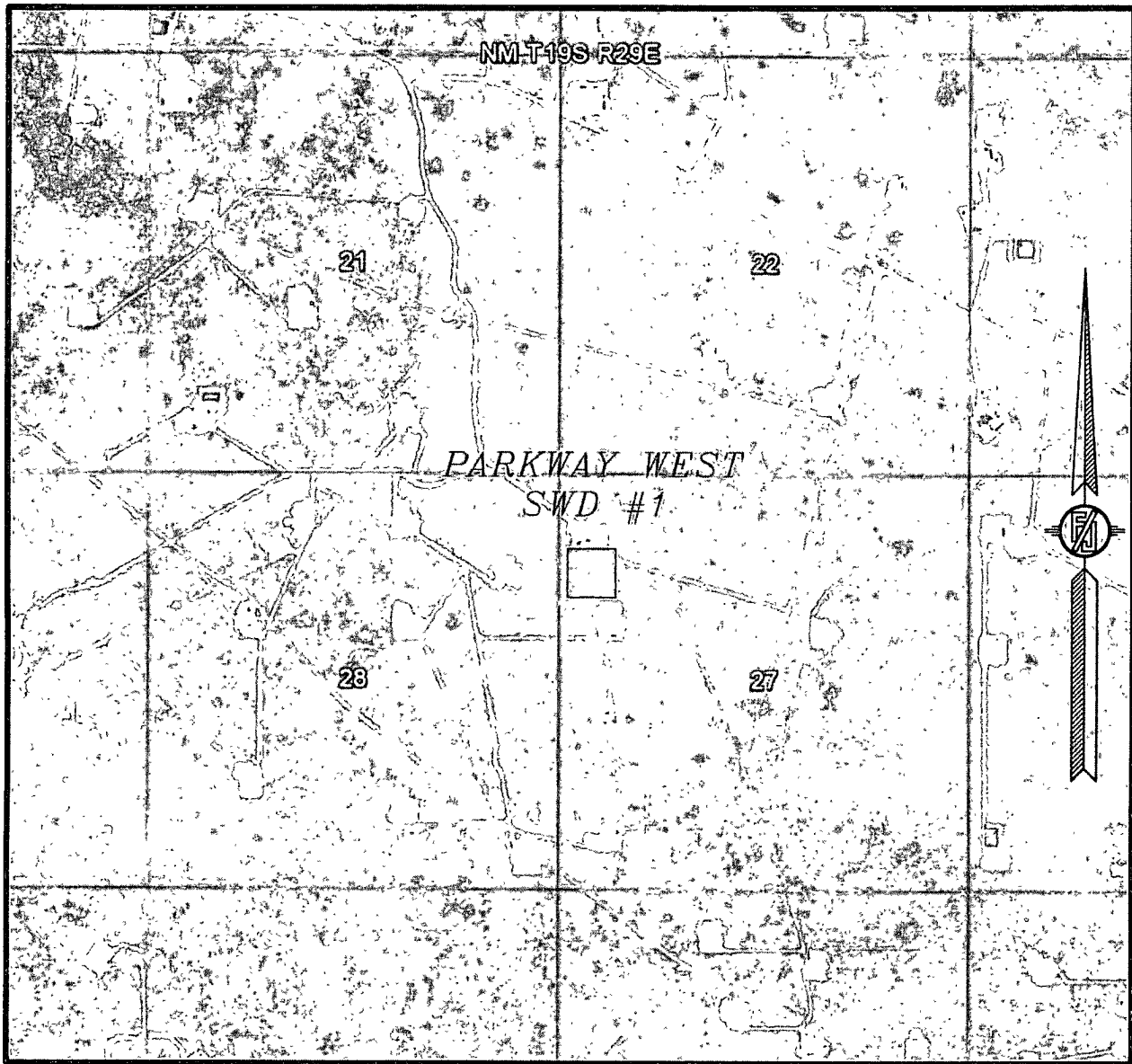
LOCATED 1255 FT. FROM THE NORTH LINE
AND 430 FT. FROM THE WEST LINE OF
SECTION 27, TOWNSHIP 19 SOUTH,
RANGE 29 EAST, N.M.P.M.
EDDY COUNTY, STATE OF NEW MEXICO

SEPTEMBER 6, 2012

SURVEY NO. 1266

MADRON SURVEYING, INC. 301 SOUTH CANAL (575) 234-3341 CARLSBAD, NEW MEXICO

SECTION 27, TOWNSHIP 19 SOUTH, RANGE 29 EAST, N.M.P.M.
EDDY COUNTY, STATE OF NEW MEXICO
AERIAL PHOTO



NOT TO SCALE
AERIAL PHOTO:
GOOGLE EARTH
JUNE 2011

DEVON ENERGY PRODUCTION COMPANY, L.P.
PARKWAY WEST SWD #1

LOCATED 1255 FT. FROM THE NORTH LINE
AND 430 FT. FROM THE WEST LINE OF
SECTION 27, TOWNSHIP 19 SOUTH,
RANGE 29 EAST, N.M.P.M.
EDDY COUNTY, STATE OF NEW MEXICO

SEPTEMBER 6, 2012

SURVEY NO. 1266

MADRON SURVEYING, INC. 301 SOUTH CANAL (575) 234-3341 CARLSBAD, NEW MEXICO

DEVON ENERGY PRODUCTION COMPANY LP

Well Name: Parkway SWD #1		Field: Parkway West	
Location: Sec 27 - 19S-29E ; 1255' FNL & 430' FWL		County: Eddy	State: NM
Elevation: 3341.4		Spud Date: N/A	Compl Date: N/A
API#: N/A	Prepared by: Kale Jackson	Date: 11/9/12	Rev:

12-1/4" hole
9-5/8", 40#, J55, LTC @ 450'

1,400' of 3.5 9.3# IPC L-80 Tubing w/
 Weatherford 7" Nickel Coated Arrow-
 set Packer

PROPOSED
 PERF
 INTERVAL
 1,450' - 2,650'
 "Artesia
 Group"
 (YSRQG)

8-3/4" hole
7", 26#, L80: 0' to 2,650'

PBTD: 2600
 TD: 2650