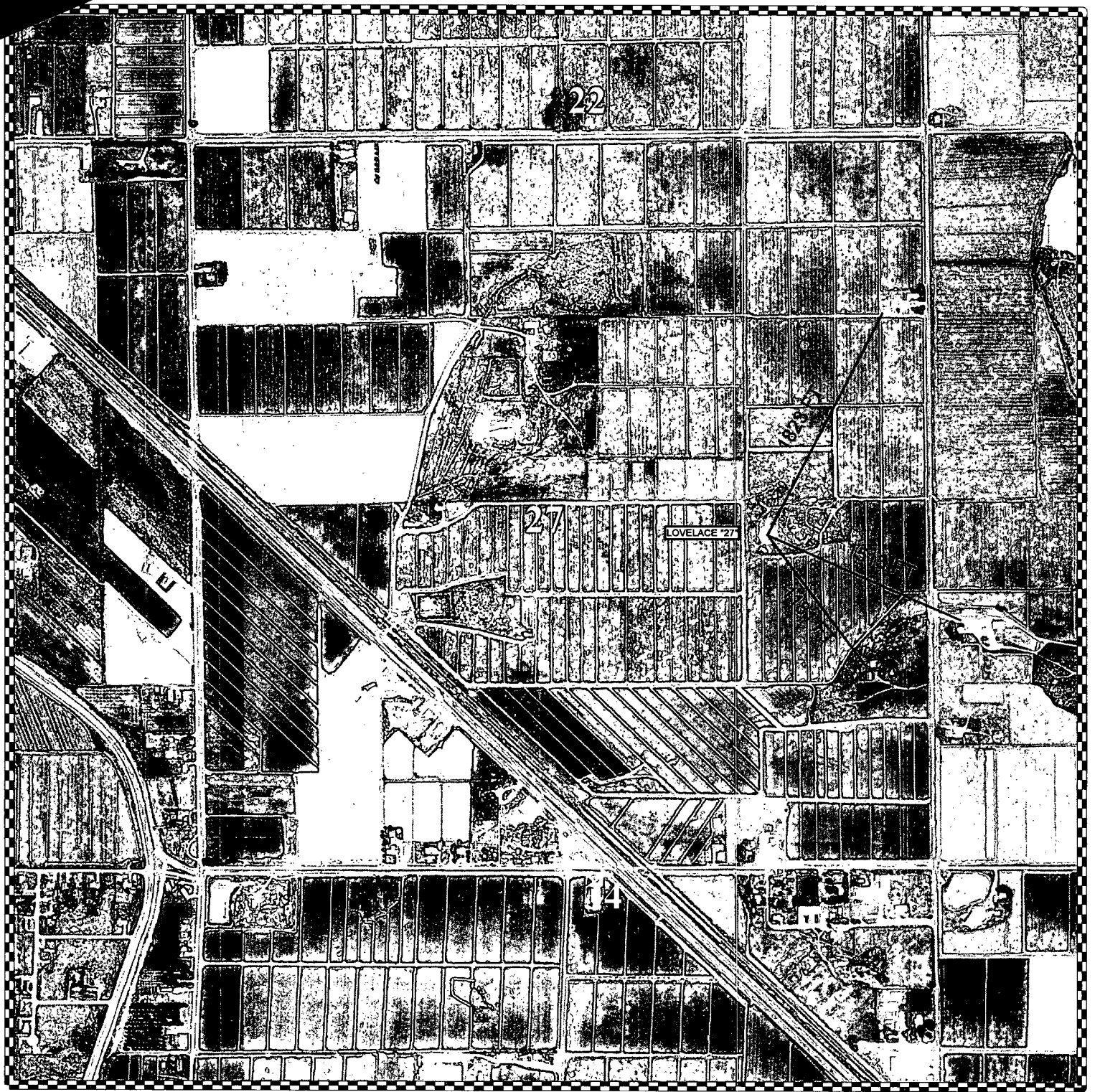


Permit Comments

Operator: DEVON ENERGY PRODUCTION COMPANY, LP , 6137

Well: LOVELACE 27 FEE #002

User Name	Comment	Comment Date
ADAMSN	Depth to ground water is less than 50 feet. Well is not in a wellhead protection area. 1000 feet or more to surface water. No H2S is expected to be encountered. A nearby gas analysis will be mailed.	3/10/2005
BARRANT	Will require distance to nearest occupied dwelling, including a h2s contingency well plan.	3/14/2005
BARRANT	Will require h2s contingency plan before spudding of well.	5/27/2005



LOVELACE "27"
22S-27E Sec 27
Eddy County, New Mexico

RECEIVED

MAY 19 2005

DOB-ANTEOIM

Salt / > 9.5



1:12,003

30 - 015 - 34135 NSL - 5206

Date: MAY 13 2005
Projection: State Plane New Mexico East
Datum: NAD 1927
Units: Feet